

CRIPPLE CREEK

via the
Historic Ute Indian Trail Route
▼▼M. T. Ry.▼▼



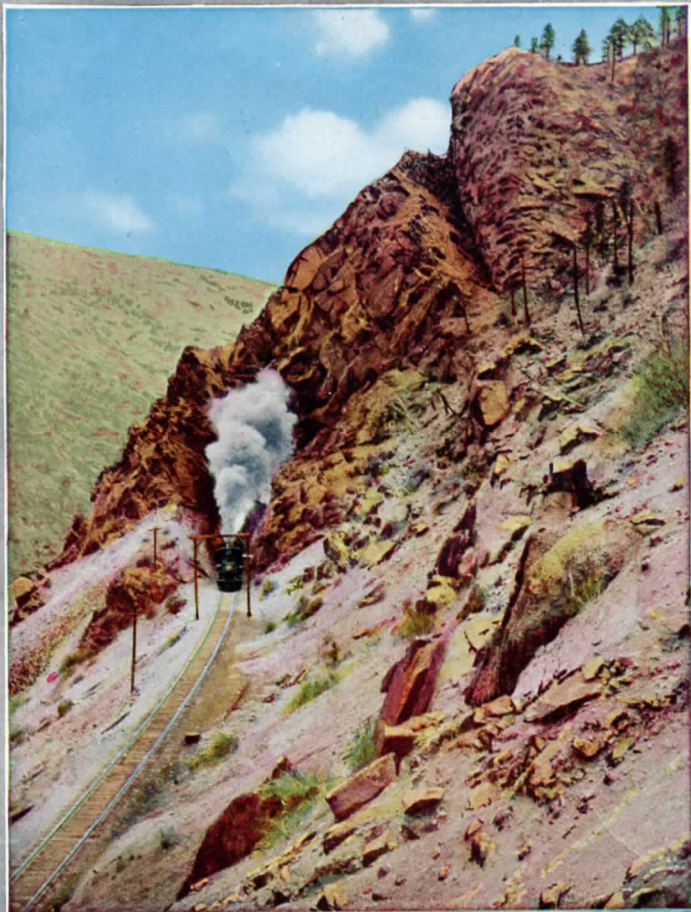
1922

CRIPPLE CREEK

via the
Historic Ute Indian Trail Route
▼▼M. T. Ry.▼▼

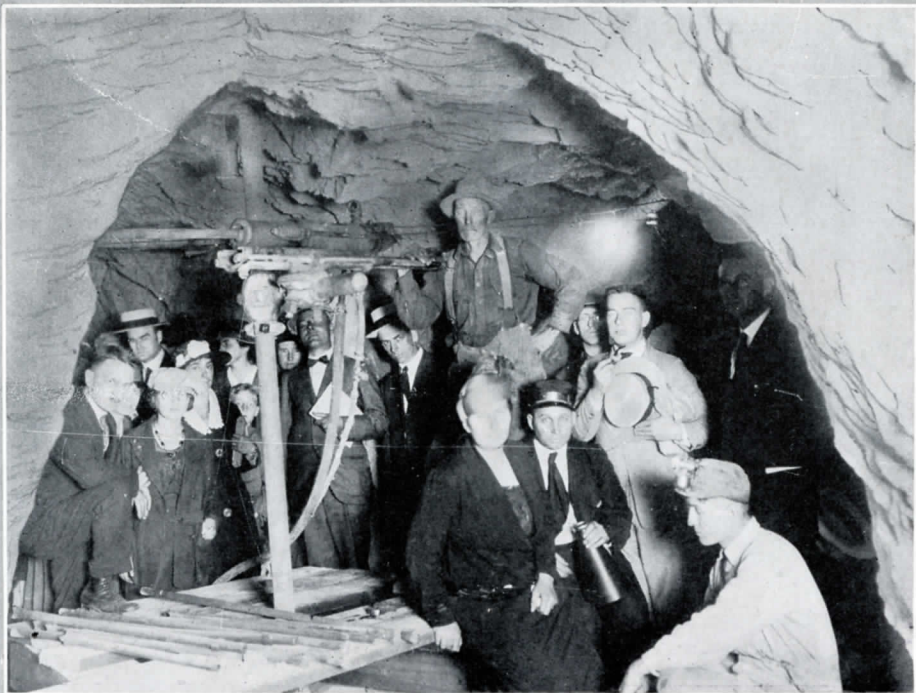


"HISTORIC UTE INDIAN TRAIL ROUTE"



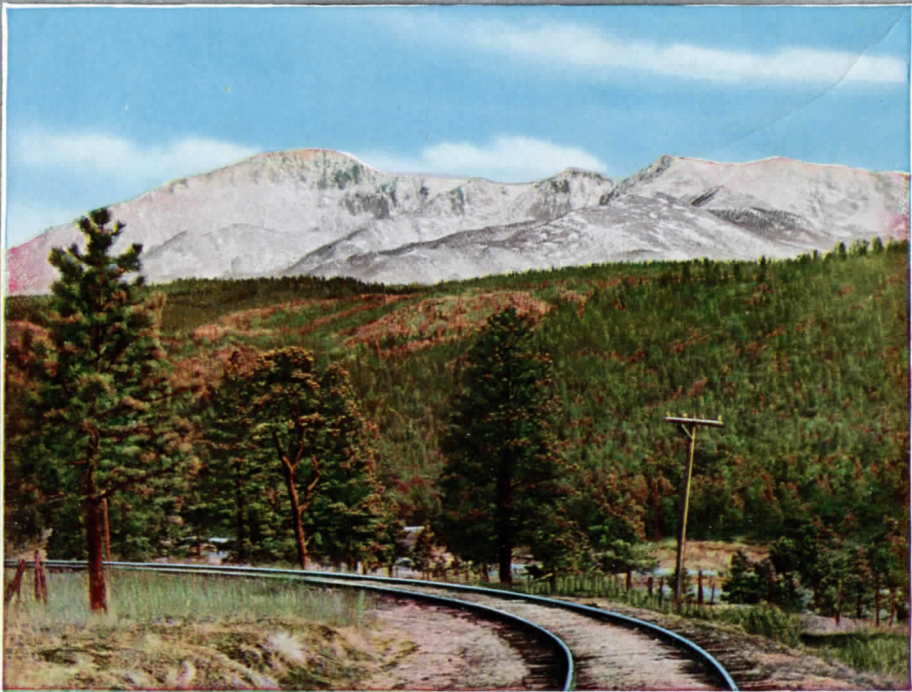
Black Crags on M. T. Ry. to Cripple Creek

"HISTORIC UTE INDIAN TRAIL ROUTE"



1,300 Feet Underground in Cripple Creek Gold Mine

"HISTORIC UTE INDIAN TRAIL ROUTE"



Pikes Peak, M. T. Ry. to Cripple Creek

"HISTORIC UTE INDIAN TRAIL ROUTE"



Mining Scene, Cripple Creek District

"HISTORIC UTE INDIAN TRAIL ROUTE"



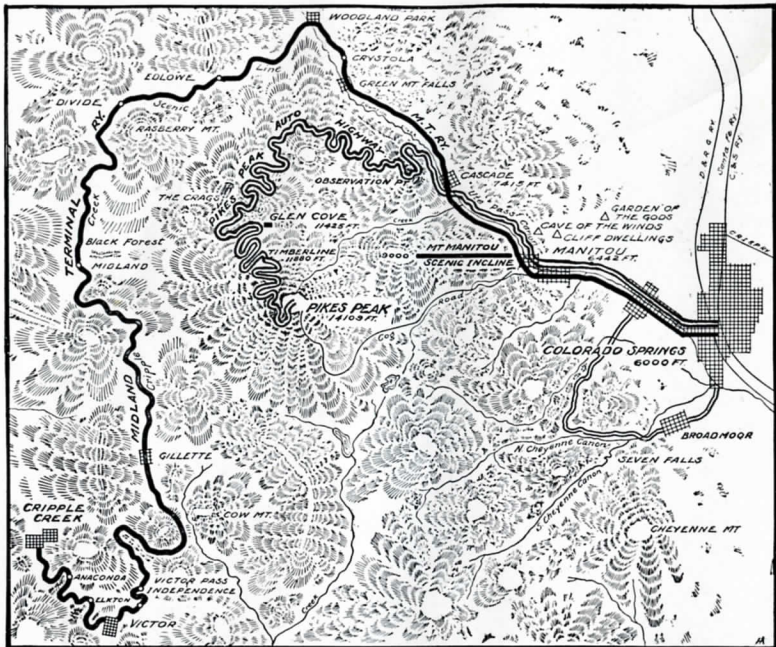
On M. T. Ry. to Cripple Creek

"HISTORIC UTE INDIAN TRAIL ROUTE"



Contour Map Cripple Creek District

"HISTORIC UTE INDIAN TRAIL ROUTE"



Map of Midland Terminal Railway

"HISTORIC UTE INDIAN TRAIL ROUTE"

Miles from Colo. Sp'gs.	Altitude	Points of Interest Enroute
	6000	Colorado Springs
6	6442	Manitou Ute Pass
12	7421	Cascade
15	7743	Green Mt. Falls
17	7950	Crystola
20	8494	Woodland Park
27	9198	Divide
41	10000	Gillette
47	10080	Cameron
48		Victor Pass
	10239	Vindicator
49		Independence Switchback
52	9775	Victor
53		Eclipse
54	9692	Elkton
55	9516	Anaconda
57	9522	Cripple Creek

No visitor to Colorado should miss this trip to Cripple Creek, the greatest gold mining district in the world. It combines a ride through some of Colorado's most rugged mountains with a visit to America's most famous gold mines.

Leaving Colorado Springs the train passes through Manitou and immediately begins its climb up the historic Ute Pass Canon, following the famous old Ute Indian Trail; here the train crawls slowly along ledges cut from sheer mountain precipices of solid granite at a cost of more than \$100,000 per mile; thence through the beautiful mountain summer resorts of Cascade and Green Mountain Falls, with their wonderful waterfalls and scenic attractions annually drawing thousands of tourists; Woodland Park in its gigantic natural amphitheater, is high above Colorado Springs, and affords unsurpassed view of mountain and plain. Your journey carries you around the north and then the west sides of old Pike's Peak, crossing Hayden's Divide, winding through a stretch of country unchanged by the hand of man, but always climbing to higher mountains with wonderful views of the main chain of the Rockies to the westward, glittering superbly with eternal ice and

snow. At Gillette (a deserted mining camp) an elevation of 10,000 feet is reached; at Victor Pass you are 10,239 feet above sea level, an elevation within a few feet as high as is attained by the roads crossing the Continental Divide. Just beyond Gillette the line enters the Cripple Creek mining district, and for the next ten miles you are passing over and among the world's treasure vaults, close to the shafts and tunnels of the great gold mines. The views along this last ten miles are a combination of scenic grandeur and gold mining unequalled anywhere.

The view of the main range of the Rocky Mountains from the train in the Cripple Creek District is undoubtedly the grandest and most extensive view in America.

SPENCER PENROSE
President

A. E. CARLTON
Chairman of Board

J. J. COGAN
General Manager

F. C. MATTHEWS
G. F. & P. A., M. T. Ry.
Colorado Springs, Colo.

For further information write to

ROUND TRIP, \$3.00

"HISTORIC UTE INDIAN TRAIL ROUTE"

This trip includes during July, August and September, a

FREE MINE TRIP

down the famous Mary McKinney mine at Anaconda, which is in itself worth the entire cost of the ticket.

In perfect safety you step into a modern mine elevator, fully equipped with safety devices, and descend 1,300 feet underground just as comfortably as you would in a business block elevator. You actually see the miners breaking the gold ores and all the workings of a big gold mine.

The Mary McKinney mine is one of the big mines of this famous district and has been selected by us for this trip because of its modern equipment as well as convenient location; it has fifteen miles of underground workings and has produced more than nine million dollars in gold.

Coming out of the mine the passengers make the remaining five-minute journey into Cripple Creek, where they have time for lunch and a look at the town before departure time on return trip. View of Mary McKinney mine on page to the right.

Round Trip COLORADO SPRINGS *or* MANITOU *to* CRIPPLE CREEK : : INCLUDING ABOVE MINE TRIP **\$3.00**

The combination of,—mountain scenery,—a ten mile ride thru the world's greatest gold mining camp,—and the trip 1,000 feet underground in a big gold mine,—make this undoubtedly one of the west's best trips.

P. S.—The Rail Trip to Cripple Creek is the ONLY trip that takes you close to the big mines of the district

"HISTORIC UTE INDIAN TRAIL ROUTE"



Anaconda and Mary McKinney Mine on M. T. Ry.