

“The Colorado Special”
 ONLY ONE NIGHT FROM
CHICAGO
 —TO—
DENVER

Equipped with Pullman Palace Sleeping Cars, Buffet Smoking and Library Cars, Free Reclining Chair Cars, Dining Cars, Etc.

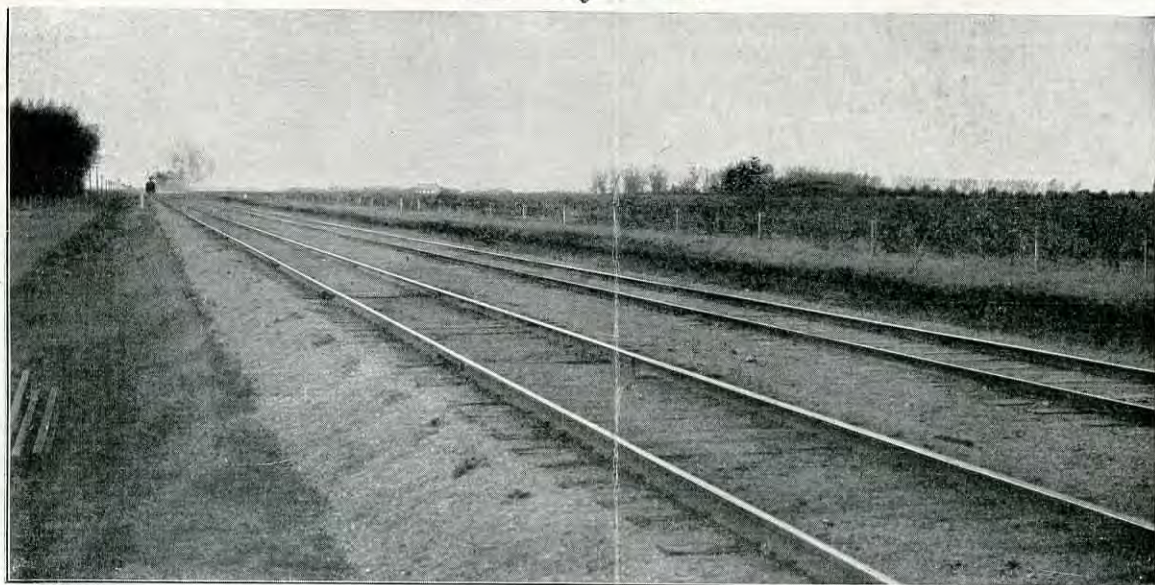
“The Colorado Express”
 —TO—
DENVER

And Many Other Western Points
Equipped with Pullman Palace Sleeping Cars, Pullman Tourist Sleeping Cars, Free Reclining Chair Cars, Dining Cars, Etc.

COLORADO AND ITS



ATTRACTIONS



On Union Pacific Main Line Through Nebraska to Denver.

THE POPULAR ROUTE TO COLORADO.

The Union Pacific has two main stems—one from Kansas City and Leavenworth, the other from Council Bluffs and Omaha.

From Council Bluffs and Omaha

Crossing the Missouri River from the Transfer Depot, Council Bluffs, over a magnificent steel bridge of eleven spans, seventy-five feet above the water, each span 250 feet long, resting upon immense stone piers, one reaches Omaha, and the trip to Colorado is commenced.

Leaving Omaha, the train climbs over 100 feet in the first four miles and we commence the journey from Missouri River to the "Rockies" over "The Great Plains," a wonderful geological formation, which to be appreciated must be seen. Those who whirl by on "The Overland Limited" and look upon "The Great Plains" as unworthy of attention, may well recall the words of that great scientist, Agassiz, who thus describes this wonderful region traversed by the Union Pacific Railroad: "That grandest of all glacial deposits, 'The Great Plains,' 500 miles wide and 1,000 miles long, stretching from river to mountain, * a magnificent earth ocean, rolling up in beautiful green billows, along the shores of the continental mountains that border it." Immense herds of buffalo, "the oldest inhabitant," formerly ranged at will over "The Great Plains."

From Kansas City or Leavenworth

Leaving Kansas City or Leavenworth via the Kansas main line, one passes through some of the finest farming land of the West and a succession of thriving cities and towns. First Lawrence, Topeka (the capital of the State), Junction City, and other thriving towns. From Ellsworth to the boundary line of the state one passes through what a very few years ago appeared on the school geographies as the

Great American Desert, considered a hopeless waste, forever devoted to jack rabbits, prairie dogs, and buffaloes; but as one rolls along at a speed of forty miles an hour in a Pullman car, he now sees a succession of prosperous communities, and fields of corn extending as far as the eye can reach. Just west of Ellis one of the finest grazing regions in the world is entered. The train speeds on, and Denver, the queen city of the mountains and capital of Colorado, the Centennial State, is soon reached.



Union Station, Denver.

COLORADO AND ITS ATTRACTIONS



Park Avenue, a Popular Driveway in Denver.

POINTS OF INTEREST EASILY REACHED FROM DENVER.

Colorado Springs, Colorado

Seventy-five miles south of Denver; altitude, 6,000 feet; estimated population, 32,000. Colorado Springs is essentially a home resort. There are more people who have summer homes here than in any of the other frequented places in Colorado. There are good hotels in abundance from \$1.50 to \$4.00 per day, and any number of attractive boarding houses. Such is the beauty and salubrity of the place that visitors who arrive here make up their minds to stay for the entire season, and, as a result, they gather about them the essentials of home life and home comfort. There are no factories of any sort in Colorado Springs—nothing to take away from its quiet secluded beauty. The streets are broader than is usual in most cities, and lined with shade trees. A few miles distant from Colorado Springs, and connected by two lines of railway and street cars, are world-famous Cheyenne Mountain, the Garden of the Gods, Pike's Peak, Manitou;—all easily accessible.

Manitou, Colorado

Five miles west of Colorado Springs and eighty miles west of Denver; altitude, 6,325 feet; population, 1,500. Everyone has heard of it, hundreds of thousands have been there, and thousands more each succeeding summer wend their way to this queen of mountain resorts, for Manitou possesses a charm which lingers, a magic spell which comes unbidden to haunt the traveler who has once rested under her witching glamour.

Manitou lies in a cup-like glen, surrounded by mountains, and has for an impressive background, high above the surrounding summits, the lonely majesty of Pike's Peak. The environment of Manitou is really remarkable for its extent and variety. There is a surfeit of walks, rides, and drives; the ascent to the summit of Pike's Peak, Glen Eyrie, Queen's Cañon, Devil's Punch Bowl, Cheyenne

Cañon, and Seven Falls; Petrified Trees, Mountain Park, with the Mammoth Anvil, Dutch Wedding, Vulcan Workshop, and Dunces' Parliament, Ruxton's Glen, Iron Spring, Ute Pass, and Garden of the Gods.

One of the greatest attractions to tourists in the State is the Pike's Peak Cog Railway, which has been in operation since the spring of 1891. The road ascends from Manitou to the summit of the peak, a distance of nine miles. This is probably the most remarkable mountain road in the world, the maximum grade being 25 per cent, or 1,380 feet to the mile.



Tent Life at the Y. M. C. A. Health Farm near Denver.



Among the Evergreens of Colorado Mountains.

POINTS OF INTEREST EASILY REACHED FROM DENVER.

Leadville, Colorado One hundred and fifty-one miles south-west of Denver; altitude, 10,200 feet; population, 15,000. The climate in the winter is much milder than that of the

Middle or Eastern States. Leadville has one of the largest mining camps in the world. It has two opera houses with 600 and 900 seats. A visit to Colorado without a sight of Leadville is incomplete, as there is much to inspect in the noted mines and smelters, aside from charming scenery.

Cripple Creek, Colorado One hundred and thirty-one miles south of Denver; population, 20,000. The greatest gold camp ever known.

It has produced since 1891 over \$43,000,000 in gold. Area of gold district is more than forty square miles. Prior to 1891 Cripple Creek was unknown, being merely a grazing vicinity. The Colorado Springs & Cripple Creek District Railway, familiarly known as the "Short Line," was constructed across the Front or Rampart Range just south of Pike's Peak in 1900, and is a most marvelous piece of railway engineering as well as a scenic wonder. The scenery is most magnificent; grand and impressive vistas of the distant plains on one hand, and towering mountains, rising into splintered pinnacles of beautiful red granite on the other, tend to belittle human efforts at mere description. A side trip over this line to the rich mining region of Cripple Creek is a pleasure not to be ignored.

Idaho Springs, Colorado Thirty-eight miles west of Denver; altitude, 7,500 feet; population, 4,500. A lovely village, nestling among the grandest mountains in the world.

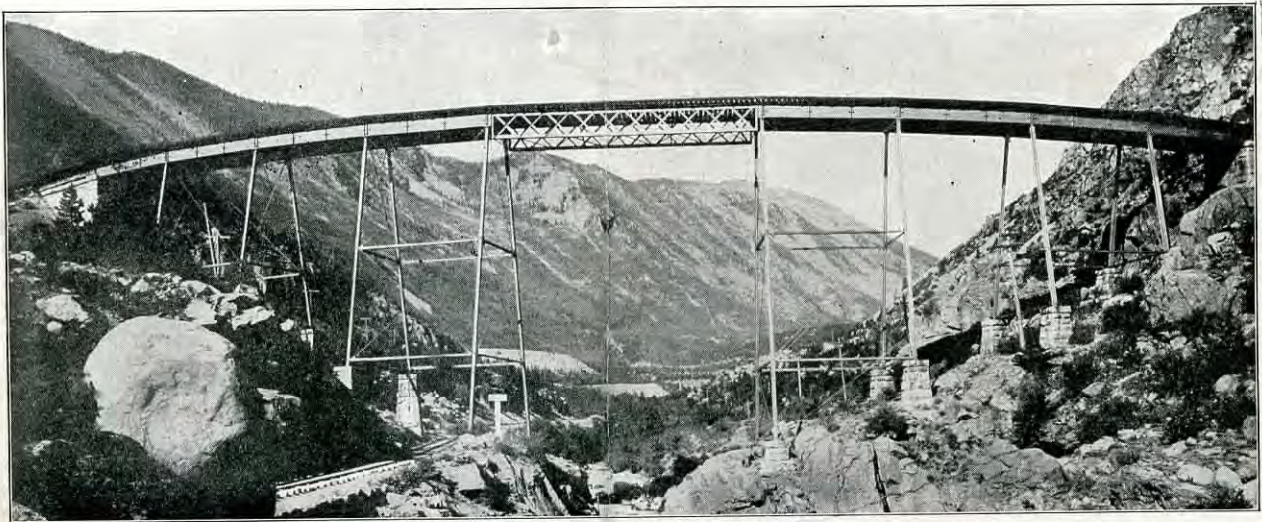
The place is easy of access, affording one of the most interesting trips in the State. It is situated at the head or western end of Clear Creek Cañon, in Clear Creek County, and is thirty-

seven miles from Denver. The ride occupies less than two hours, but there is no journey in the State occupying the same length of time that will furnish so many surprises of mountain grandeur and beauty. Good hotels; accommodations, \$1 to \$3 per day. Good camping grounds.

Georgetown, Colorado Fifty miles west of Denver; altitude, 8,475 feet; population 3,000. Georgetown is a handsome town in the very heart of the mountains. The bright sunshine, the pure atmosphere, the mountain breeze, the cool, dewless nights, render life in this portion of the Rockies a



Canon of the Grand River.



High Bridge on Georgetown Loop.

POINTS OF INTEREST EASILY REACHED FROM DENVER.

pleasurable existence. The famous Georgetown Loop (see illustration, pp. 11, 12) is one of the most wonderful examples of engineering skill in the world and the greatest one of its kind in North America, the road crossing and recrossing itself at different altitudes, in the shape of a lariat noose at play, as it climbs towards the clouds.

Central City, Colorado Forty miles west of Denver; altitude, 8,300. Central City, a town that looks as if the great towering mountain heights resented its being there, and brushed it off when it attempted to crawl half way up their rugged sides, has all the luxuries and conveniences of a large city, electric lights, good hotels at \$2.50 to \$3.00 per day, opera house, etc. The mines are all situated within a radius of a mile from Central City.

Boulder, Colorado Boulder, on the Union Pacific, twenty-nine miles from Denver; altitude, 5,350 feet; population, 6,000. Boulder is reached by two lines of railway, and is the terminus of the Boulder Valley branch of the Union Pacific. The Colorado & Northwestern Railroad runs from Boulder to the mining camps of the county. The mountain resorts near Boulder are of easy access by railroad or carriage, and in addition to well-equipped hotels there are beautiful lakes and crystal streams abounding in mountain trout. Stages run daily from Boulder to this point, where there are good hotels and excellent accommodations. Because of its natural healthfulness, its delightful climate, and its charming location, a large sanitarium has been established. The city and its beautiful environment of valley and hills have many superb attractions to the seeker after pleasure and health. It is noted for its delightfully shaded streets and its elegant homes. The business center is built in solid blocks, giving it the aspect of metropolitan importance.

The city is supplied with the purest water to be obtained in the State. It comes fresh from the melted snows in the mountains and is carried by means of large mains to a reservoir just behind the first range of hills, some 300 feet above the city, and from there is distributed through a network of iron pipes. The Colorado-Texas Chautauqua was permanently established at Boulder five years ago. The sessions are held in the months of July and August of each year, attracting thousands of people from all parts of the United States. Good hotel accommodations, \$2.00 and \$2.50 per day.



Tourists in the Rocky Mountains.

COLORADO AND ITS ATTRACTIONS



In Cathedral Park.

POINTS OF INTEREST EASILY REACHED FROM DENVER.

Greeley, Colorado Greeley on the Union Pacific Railroad, fifty-two miles north of Denver; altitude, 4,640 feet; population, 4,000. Situated in the midst of charming valleys is the queenly little city of Greeley. The spacious residence lots are luxuriant with gardens, trees, and flowers, and in the midst a delightful park is reserved for the recreation of the people. It was under the fostering care of the renowned Horace Greeley that the Greeley Colony in 1870 made a settlement here and laid out the townsite of Greeley. This was the identical spot which he held in his mind's eye when he wrote the familiar but famous admonition, "Go West, young man, and grow up with the country."

Cherokee Park That Cherokee Park is an ideal spot is attested by the thousands who visit this retreat each year. The altitude is seven thousand feet. This, together with the pure air, pure water, and absence of extremes in temperature, make a combination of good features that are invaluable to invalids and strong people as well. Magnificent scenery and picturesque spots abound on all sides within a short distance, easily accessible by ponies and carriage teams. Many noted places of interest are located within a short distance of Cherokee Park, some of which are: Eureka Peak, Woods Pyramid, Copper Mountain, Sheep Head Mountain, and Prairie Divide. Diamond Peak and Black Mountain are seven miles distant.

Glenwood Springs, Colorado Three hundred and sixty-seven miles west of Denver; altitude, 5,750 feet; population, 1,500. It is beautifully situated at the junction of the roaring Fork and the Grand River,

on the western slope of the Continental Divide. There are several hot springs, the chief being the great Yampah Hot Spring, which has the enormous flow of 2,000 gallons a minute. The waters and baths are especially efficacious in cases of rheumatism, gout, lead poisoning, and cutaneous affections. From Glenwood Springs a stage journey carries the sportsman into the great game region of the State, to Trappers' and Marvin's Lakes and the Bear River district.



Typical Rustic Resort in the Rocky Mountains, 28 Miles from Denver.



The City of Denver

THE CITY OF DENVER



In the fall of 1858 the single log cabin of a pioneer marked the beginning of Denver's history. When the Denver Pacific and the Kansas Pacific divisions of the Union Pacific Railway reached the city in the summer of 1870, it contained less than 5,000 inhabitants.

August 3, 1876, when by proclamation of President Grant, Colorado was formally admitted as a State of the Union, the population of Denver approximated 25,000. By the census of 1880 it was 35,629; in 1890 it was 106,713, and in 1900, by census returns, it was 133,859. To-day its estimated population is 175,000.

Its Geographical Center Of Denver it has been said that "It is the geographical, railroad, financial, commercial, and social center, not only of Colorado, but of the entire Rocky Mountain region." Colorado has an area of 104,500 square miles, and is divided into forty-two counties. Its average length, east and west, is 380 miles, and its breadth, north and south, 280 miles. It has been frequently stated by writers in their descriptive accounts of Colorado that it is larger than all the New England States combined, with the State of Ohio added; it is larger than the four Middle States, and larger than England, Scotland and Wales combined. As one writer says:

"The country tributary to Denver (and within which she has no possible rival for 600 miles in any direction) extends far beyond the State of Colorado, and practically embraces the whole territory west of the Missouri River, with an area considerably greater than the whole of the German Empire."

Its Structural Beauty

The characteristics that first impress the visitor are the structural beauty and the neatness and cleanliness of the city, the busy aspect of the streets, and the sprightly, enterprising spirit of the people. Its many solid blocks of imposing buildings are objects of admiring wonder, and the many miles of beautiful homes, shady avenues, and verdant lawns are a most charming and refreshing scene.

Its Parks and Amusements

For the recreation and pleasure of the people, Denver is provided with eleven parks, the City Park being the largest, containing 340 acres, provided with groves, lakes, flowers, statuary, museum, magnificent drives and all conveniences, free concerts daily in the summer season. There are four theaters, one costing \$1,250,000, and another \$520,000. In addition there are two large theaters, one at Elitch's Garden and the other at Manhattan Beach. It has seven theaters, three of which compare favorably with any in America. The tourist can spend a delightful week here in the "Queen City of the Plains." The Alpine view from Denver, of the great Rocky Mountain chain, extending north and south

COLORADO AND ITS



ATTRACTIONS



The City of Denver.

for 200 miles, with Long's Peak to the north, Pike's Peak to the south, and the dome of the continent, Gray's Peak in the center, is the acme of graceful grandeur.

Its Industries

As a manufacturing center the industries of Denver give employment to thousands of men. It would not be possible to name them all here, but they embrace manufacturing of bicycles, fire brick, stoves, car wheels, pottery, lead pipe, boots and shoes, crackers, overalls, paper, soap, pickles, brooms, wagons, carriages and street cars, onyx roofing, chemicals, fiber cotton mills, breweries, foundries, iron and machinery works, packing companies, tannery, three large smelters, etc.

Its Public Buildings

It has public buildings, cathedrals, churches, and schools unsurpassed in any Eastern city double its age. It has a free public library with over 100,000 volumes.

Within the city limits of Denver are seventy primary or graded schools, with an average daily attendance of about 32,000 pupils whose studies are supervised by 780 teachers. It has law schools and medical colleges.

As a social center, it is deservedly popular. The Denver Club cost \$250,000; the Denver Athletic Club, \$225,000. There is a University Club, a Women's Club (with a membership of 1,000), and other clubs galore.

Denver is a city of brick and stone almost exclusively. In many of the large business blocks iron is used. The buildings are costly.

Its Superb Climate

For advantages of climate Denver has no peer among the cities of the country as an agreeable place of residence, while statistics prove it to be the most healthful city in the United States. The mortality rate of three years may be taken as a fair example. In 1898 the death rate was 11.20 per 1,000 inhabitants; in 1899 it was 11.55 per 1,000; and in 1900 the rate was 13.00. Its death rate is among the lowest in the nation. During the past ten years there were in Denver on an average in each year 314 clear or partly clear days.

Whether seeking health or in pursuit of fortune, Denver is at all times and in all seasons a charming place for permanent abode. To the business man and the mechanic it is a place of great opportunity; for genius it is ever an inviting and fruitful field, and while one of the most beautiful, it is one of the most practical and progressive cities of the land.

Its Hotels

The hotels of Denver, palatial in appearance as well as spacious in dimensions, can accommodate thousands. Few western cities have such complete and ample hotels, boarding houses, and restaurants as Denver. There are forty hotels, besides rooming places and boarding houses without number, and it has been proved that 50,000 excursion visitors can be lodged in the city in a single night.

Visitors

are invited to call on J. C. Ferguson, General Agent, Union Pacific Railroad, 941 Seventeenth St., Denver. Questions cheerfully answered, and all information given.



Rounding Inspiration Point, Clear Creek Canon.

SOME OF THE ATTRACTIONS OF COLORADO.

Mountain Grandeur of Colorado

The natural attractions of Colorado are by no means confined to their mineral springs resorts. In whatever direction the traveler may choose by rail, if he go to the mountains, his journey is a succession of glorious scenery, varying in the characteristics of placid beauty, grotesque ruggedness, and awe-inspiring grandeur. The valleys are elevated from 2,700 to 7,000 feet above the sea. Some of the mountain peaks reach a height of from 12,000 to 13,500 feet. Many streams flow from the elevations and meander through the vales.

But there are many wonders of mountain peak and chasm along the several lines of railway throughout the mountain system of the State. Pike's Peak, the massive giant of the Rockies rears its snowy crest in the midst of a veritable wonderland. Here nature is seen in her grandest pose. Around about this mighty giant are grouped other stupendous peaks, lifting their summits through the clouds into the regions of perpetual snow. Thence open numerous abyssmal cañons, where the granite mountains have been cleft asunder and solid rock walls rise to perpendicular heights of a thousand feet or more.

Mountain Lakes of Colorado

In raising up the great mountains of Colorado, Nature provided with a lavish, artistic hand for the necessities and pleasures of man. In the midst of their most rugged configurations are to be found some of the most charming spots. Away up between the sunny peaks are many little fairy lakes whose crystal waters reflect the blue sky and the misty veil that hangs suspended from the summits above. While traveling in the mountains where these beautiful lakes abound, a recent European tourist was heard to exclaim: "I have seen nothing in the Alps nor the mountain regions of the old world to compare with it."

The Great Parks of Colorado

They contain fields and forests and great stretches of arid plains, where the herds of cattlemen have succeeded the herds of buffalo; they are watered by creeks and rivers, and contain villages and farm houses; they have springs and lakes, where hotels and other places of entertainment have been built for settlers, for tourists, hunters, campers, and others seeking remote places of resort in the heart of the Rocky Mountains. The prominent sections are the North Park, Middle Park, Estes Park, and South Park. All these have good hunting and fishing, and comfortable hotel accommodations.

Mineral Springs of Colorado

It is the testimony of the wisest doctors of medicine the world over that the mineral waters of all the countries which contain such ingredients as are found in the Rocky Mountain regions possess a remedy and often a cure for rheumatism, liver, kidney, and skin diseases, and are always beneficial to the consumptive. The mineral springs of Colorado have a wider range and are superior in curative properties to those of Switzerland, while many of them equal and others surpass the most famous waters found in Austria, Germany, and France.

Hunting and Fishing in Colorado

Rich as the Rocky Mountain region is in mineral and agricultural resources, in glorious scenery, and a marvelous climate, it also possesses some of the finest fishing and hunting grounds on earth, the dense forest being the natural covert for elk, deer, and other game, its myriads of streams teeming with mountain trout, its lakes, whilst also full of attractions for the angler, being the haunt for millions of geese, ducks, and other wild fowl.

The watercourses of Colorado have their sources cen-



Mount Audubon and the Snowy Range, Denver to Eldora and Ward.

SOME OF THE ATTRACTIONS OF COLORADO.

trally in the mountains, and flow in all directions, increasing in volumes from the countless number of lesser tributaries. In all of these waters, from the little brooks high up in the mountains to the broad rivers in the valley, abound the mountain trout in all his sportive gayety, beauty of form, and delicate toothsome-ness, the latter unexcelled by any species of the piscatorial tribe.

There are numberless little lakes in the Rocky Mountains varying in size from five square miles to the circumference of a mill pond, many without names because of the great number and their remoteness from towns and settlements. These, having their inlets and outlets by the mountain streams, are likewise swarming and teeming with fish, and are the resort of those who prefer the comforts of fishing from a boat to the more arduous sport of wading the streams.

Climate and Health

The testimony of scores, if not hundreds, of eminent physicians in America and Europe, concerning the beneficial effects of Colorado climate for consumption and sufferers from general pulmonary complaints, could be cited, and it is in larger part due to the advice of these physicians that the city of Denver and other favored points in the State, including many charming health and pleasure resorts, have many conspicuous features of the sanitarium, as in fact, they become by the very nature of things.

In Colorado all the conditions of health are met. There is a sufficient altitude to cause lung and chest development; there is the dry, exhilarating mountain air, with an almost absolute absence of malaria; there is the tonic effect of a bracing climate, without its rigors; an atmosphere filled with ozone; cool nights in summer, and a bright, sunny sky almost every day in the year.

The Continental Divide

The line of perpetual snow is what the new "Moffat Road," running from Denver to the crest of the Continental Divide west of that city, is called. It is possible to take the train in the morning, in the middle of summer, and by traveling three hours reach the banks of eternal snow which lie along the track 11,660 feet above the sea, all summer long. The scenery aside from the novelty and charm of the snow in the summer time, is exceedingly beautiful, and thousands who have taken this journey to the top of the great Continental Divide esteem it to be one of the greatest pleasures of their visit to Colorado.



Climbing Giant's Ladder on "The Switzerland Trail of America," Denver to Eldora and Ward.



Typical Rustic Resort in the Rocky Mountains near Denver, Col.

SOME COLORADO RESORTS

Artist's View.—11 miles from Morrison, one hotel; rates \$8.00 to \$10.00 per week.

Buffalo Park.—40 miles from Denver in Platte Cañon. Two hotels accommodating 80 guests; rates \$2.00 per day, \$9.00 to \$12.00 per week.

Cassells.—65 miles from Denver. Hotel accommodating 100 guests; rates \$12.00 to \$15.00 per week.

Chase, Sunnyside Inn.—64 miles from Denver. Hotel rates \$1.50 to \$2.00 per day, \$12.00 to \$14.00 per week.

Cherokee Park, St. Cloud, Laramie County, Col.—12 miles southwest of Hermosa, Wyo., on the Union Pacific Railroad; rates \$2.00 per day, \$9.00 per week.

Deansbury.—27 miles from Denver in Platte Cañon. Hotel rates \$2.00 per day, \$8.00 to \$10.00 per week.

Dillon.—119 miles from Denver. Hotel and cottage accommodations, \$8.00 to \$12.00 per week. Fishing and hunting in the State. From this point are reached by stage: Colorow, 35 miles; Motomma, 13 miles; Rathbone, 18 miles. Good hotels and cottages; rates \$8.00 to \$12.00 per week.

Evergreen.—11 miles from Morrison. Babcock Hotel, rates \$8.00 to \$10.00 per week. Hines Hotel, rates \$8.00. Artist's View Hotel, rates \$8.00 per week.

Kiowa and Shawnee Lodges.—55 and 60 miles, respectively, from Denver. Rates \$3.00 per day, \$12.00 up per week.

Middle Park.—Reached via Denver, North Western & Pacific Railway (Moffat Road). Stage leaves Granby daily to following resorts:

	Dis-	Fare one	Fare		Dis-	Fare one	Fare
	tance.	way.	round trip.		tance.	way.	round trip.
Spruce Lodge	2	\$.25	\$.50	4-4 Ranch	2	\$.25	\$.50
Idlewild	4	.50	1.00	Coulter	4	.50	1.00
Cousins	6	.75	1.50	Grand Lake	14	2.00	4.00
Gaskills	2	.25	.50				

At Grand Lake, three good hotels; rates \$2.00 per day, \$10.00 per week.

At Sulphur Springs, three hotels; rates \$2.00 per day, \$8.00 to \$12.00 per week.

Stage company allows stop-overs at any of above places, regardless of limit of tickets. Good accommodations can be had at reasonable rates at any of the points en route.

Mt. Princeton Hot Springs.—142 miles from Denver. Good hotel and cottages, rates \$10.00 per week.

Nederland.—Two miles from Rollinsville, on Denver, North Western & Pacific Railway (Moffat Road). Rates \$5.00 to \$10.00 per week.

Corona.—Elevation 11,660 feet. 60 miles from Denver, on the Denver, North Western & Pacific Railway (Moffat Road). Frost nightly throughout the summer. Hotel for hay fever patients. Rates \$2.00 per day, \$10.00 per week.

Tolland.—47 miles from Denver, on the Denver, North Western & Pacific Railway (Moffat Road). Situated in beautiful Boulder Park. Trout fishing, excellent camping grounds, hotels, and tents. Rates \$2.50 per day, \$15.00 per week.

Arrow.—Near crest of Continental Divide, on the Denver, North Western & Pacific Railway (Moffat Road). Above line of perpetual snow. Ideal camping spot for tubercular patients. Hotels and tents. Rates \$6.00 per week.

Sulphur Springs.—On "Moffat Road," 110 miles from Denver. Good Hotels, rates \$1.50 to \$3.00 per day.

Kremling.—On "Moffat Road," 126 miles from Denver, fare one way \$7.00, round trip \$11.20.

Parlins.—190 miles from Denver and 12 miles from Gunnison. Boarding house, rate \$1.00 per day.

Pine Grove.—42 miles from Denver in Platte Cañon. Hotel and cottages, rates \$2.00 per day, \$7.00 to \$10.00 per week. Near by is Willowmore Ranch (10 miles), rates \$6.00 to \$8.00 per week. Also Mrs. M. J. Jewell's place (8 miles), in Elk Creek Cañon, rates \$10.00 per week.

Springdale.—10 miles from Boulder. Selzor House, rates \$8.00 to \$14.00 per week.

Troutdale.—14 miles from Morrison. Good hotel, rates \$10.00 to \$12.00 per week.

Twin Lakes.—18 miles from Leadville. Hotel, rates \$2.00 per day, \$10.00 per week.

Mt. Pass Resort.—20 miles from Colorado Springs. Good Hotels, hunting, fishing, camping.

Waunita Hot Springs.—9 miles from Pitkin. Hotel, rate \$8.00 per week.

SOME OF THE PRINCIPAL HOTELS OF COLORADO

CITY OR TOWN	HOTELS	RATES	CITY OR TOWN	HOTELS	RATES	
Aspen	Hotel Jerome	\$3.00	Greeley	Union	\$2.00	
Alamosa	Lion	2.00	"	Brown	European	
"	Victoria	3.00	"	Commercial	1.50	
Antonito	Palace	2.00	"	Albion	European	
"	Germania	2.00	"	La Veta	3.00	
Black Hawk	Mountain House	2.00	Gunnison	Farmhouse—T. J. Noc Farm	4.00 to 5.00	
Breckenridge	Denver Hotel	3.00	Greenland	Hotel Colorado	2.50 to 3.50	
Boulder	Bowen Hotel	2.50 to 3.00	Glenwood Springs	Hotel Glenwood	Special—Eu.	
"	Colorado Sanitarium	2.50 up	"	Kendrick Cottages	Special	
"	St. Julian	2.00 to 3.00	"	Main's Cottages	European	
Buena Vista	Hot Springs	2.00	"	Grand	European	
"	Princeton	2.00	"	Denver	3.00	
"	Yale House	E. 1.50	Green Mt. Falls	Green Mountain House	10.00 to 12.00 per wk.	
Brighton	Hotel Brighton	1.50 to 2.00	Haisheve	Hot Springs Hotel	6.00	
Canon City	Hot Springs	2.00 up	Husted	Walker Ranch	2.50 to 3.00	
"	St. Cloud	2.00	Idaho Springs	Beebe	2.50 to 3.00	
"	Strathmore	3.00	"	The Club	2.50 to 3.00	
"	St. James	1.00 to 2.00	"	Hotel de Paris	2.50 to 3.00	
Cascade Cañon	McDonald	Rooms	Iola	Colorado Hotel	2.00	
"	New Midland	2.50 to 3.00	La Junta	A. T. & S. F.	3.00	
"	Hotel Ramona	3.00—Sp. by wk.	Lake City	Pueblo House	2.00	
Castle Rock	City	1.00	La Veta	La Veta	2.00	
Central City	Teller	1.50 to 2.00	Longmont	Imperial	2.00	
Colorado Springs	Alamo Hotel	2.50 to 4.00	"	Occidental	2.00	
"	Antlers	Eu. Rms. 1.50 up	"	Imperial	2.00	
"	Alta Vista	European	Loveland	Loveland House	2.00	
"	Broadmoor Casino	European	"	Bushnell	2.00	
"	New Elk	European	"	The European	2.00 to 2.50	
"	The Savoy	Eu. Rms. 1.50 up	Lea'sville	Cottingham	3.00 to 4.00	
"	Goughs' European Hotel	Am. and Eu.	"	Vendome	1.00 to 1.25	
"	Greer's Hotel	3.00	"	Fifth Avenue	2.00	
"	Park Hotel	1.25	"	Commercial	1.00	
"	Plaza Hotel	Am. and Eu.	Littleton	Daken Ranch	3.00 up	
"	Spaulding House	1.50 to 2.50	"	Cliff	3.00 up	
"	Boarding Houses	1.50 up, Sp. by wk.	"	Navajo	2.50 up	
Cripple Creek	Collins	European	"	Grand View	3.00 up	
"	National	European	"	Mansions	2.00 up	
"	La Kota	2.50	"	Ruxton	2.00 up	
Crested Butte	Palace	2.00	"	Sunnyside	2.00 up	
"	Elk Mountain	2.00	"	Iron Springs	2.00 up	
Creede	Zang's	2.00	"	Boarding Houses	1.00 up, Sp. by wk.	
Cuchara Junction	Cuchara Hotel	2.00	Mancos	Mancos House	2.00	
Chimarron	Black Cañon	2.00	Monte Vista	Simpson Hotel	2.00	
Denver	Albany	2.50 to 3.00	Montrose	Smith's Central	2.00	
"	Albany—European	1.50 to 2.00	"	Belvedere	2.50 to 3.00	
"	Abbott	1.00	Monument	Monument Hotel	2.00 Eu. Plan	
"	American	2.00	New Castle	Albany	3.00 to 4.00	
"	Albert	European	Ouray	Beaumont	1.00 Eu. Plan	
"	Brown Palace	3.00 to 5.00	"	Hotel Wilson	3.00 Am. Plan	
"	Brown—European	1.50 up	"	Western	1.25 to 1.50	
"	Broadway	1.50 up	Overton	Gunther Place	1.00	
"	Columbia	1.25 to 2.00	Pagosa Springs	Arlington Hotel	2.00	
"	Drexel	European	Poncha	Hot Springs	Rates on request	
"	The Elk Hotel	European	Pueblo	Clark's Magnetic Mineral Springs	2.00 up, Sp. by wk.	
"	Grand Central	.50 to 1.50	"	Southern	2.00 to 2.50	
"	Inside Inn	.50 to 2.50	"	Grand	3.00	
"	Lindell	European	"	Imperial	3.00 to 4.00	
"	Metropole	1.00 to 1.50	"	The Morgan	Eu. 50c up	
"	The Markham	European	"	Union Depot	3.00 to 4.00	
"	Oxford	75c p	"	The Maine	European	
"	St. James	m.—2.00 to 3.50	Palmer Lake	Rockland's Hotel	2.00	
"	Shirley	Eu.—1.00 to 2.00	"	Kinnikinnick Hotel	1.00	
"	St. Elmo	3.00 up	"	Y. W. C. A.	3.50 a week	
"	The Adams	1.25 to 2.00	"	Boarding Houses	1.00	
"	Union	Eu.—1.50 up	Parlin	Farmhouses	2.00	
"	Victoria	Am.—3.00 up	Platteville	Platteville House	2.00	
"	Warren	1.00 to 1.50	Red Cliffe	Quartzite	2.00	
"	Windsor	1.25 to 1.50	"	Eagle	2.00	
"	"The Savoy" European	European	"	Clark	2.00	
Delta	Delta House	2.00 to 3.00	"	Rifle Hotel	2.00	
Del Norte	Windsor	2.00	"	Rifle Falls	2.00	
Durango	Blaine's	1.50 to 2.00	"	(Reached from)	2.00	
"	Inter Ocean	1.50 to 2.00	"	"	Mountain Dell Home	2.00
"	Palace	3.00	"	"	Marvine Lodge	2.00
"	Strater	2.00	"	"	Pettier's Ranch	2.00
Doyle	Waunata Hot Springs	2.00	"	"	Steele's Ranch	2.00
Debeque	Glen Beulah Park	2.00	"	"	Meeker Hotel	2.00
"	Mesa Lodge	2.50	"	"	Miller House	2.00
Eaton	Commercial	2.00	"	"	Windemere Lodge	2.00
"	Palace	2.00	"	"	Wilbur's Ranch	2.00
Estes Park	Elk Horn Lodge	3.00	"	"	Tichenor's Cabins	2.00
"	Estes Park	3.00	"	"	El Captain	3.00
Fairplay	Bergh	2.00 to 2.50	Rocky Ford	St. James	European	
"	Fairplay	2.00 to 2.50	"	Alta Vista	European	
Florence	Fremont	2.50 to 3.00	"	Brown	1.50 up	
Fort Collins	Commercial	2.00	Ruedi	Smith's	1.50 up	
"	Linden	1.50 up	"	Monte Cristo	3.00	
"	Ludmon	2.00 to 3.00	Saldia	St. Clair	2.50 and 3.00	
"	Northern	3.00	"	Grand Hotel	3.00 up	
Georgetown	American	2.00	Silverton	Boarding House	Rates on request	
"	De Paris	European	South Fork	Sterling House	2.00	
Golden	Crawford	1.50 to 3.00	Sterling	Sterling House	2.00 to 3.00	
"	Western	2.00	"	Depot Hotel	2.00	
Grand Junction	St. Regis	2.50 to 3.00	Telluride	Central House	3.00	
"	The Western	European	"	New Sheridan	3.00	
"	Revere	1.50	"	Columbian	3.00	
"	Buena Vista	2.00	"	Coronado	3.00	
"	La Court	European	"	Cardenas	3.00	
Greeley	Oasis	2.50 to 3.00	Trimble Springs	Trimble Springs Hotel	2.00	
"	"	"	Walsenberg	Klein	3.25	
"	"	"	Hot Springs Hotel	Hot Springs Hotel	3.00	
"	"	"	Wagon Wheel Gap	Woodland Park	2.00 to 5.00	
"	"	"	Woodland Park	McCoy Hotel	2.00	
"	"	"	Wolcott	Yampa Hotel	2.00	
"	"	"	"	Sheridan Hotel	2.00	

COLORADO AND ITS ATTRACTIONS



SUMMER EXCURSIONS IN COLORADO.

On July 16, 23, 30, August 6, 13, 20, 27, September 3, 10, 17, 24, and October 1, 8, 15, excursion tickets will be on sale at Denver, Colorado Springs, and Pueblo, to all interior Colorado points at rate of one fare for the round trip, with final limit of thirty days from date of sale, except that: Between Denver, Colorado Springs, Manitou, Pueblo, and Trinidad, the limit will be 10 days, continuous passage in each direction. Tickets to Cripple Creek sold from Denver and Pueblo will be limited to 2 days from date of sale, and from Colorado Springs to date of sale. Tickets to all other points (except that tickets to A., T. & S. F. territory will be continuous passage in both directions) will be limited to continuous passage up to Florence, La Veta, Cascade, Platte Canyon, Golden Boulder, or Sugar City, with transit limit of 10 days in each direction. Stop-overs allowed beyond these points within transit limit. Final return limit 30 days from date of sale. All tickets will be good to start only on date of sale. Regular iron-clad signature form of ticket requiring execution at destination will be used. Special trains, wild-flower excursions, etc., will also be run at very low rates to the most interesting points in the State. Under this arrangement the round-trip rates to some of the more prominent points of interest in the State will be as follows:

	Denver	Col.Spgs.	Pueblo		Denver	Col.Spgs.	Pueblo
Arrow	\$ 5.00			Iliff	\$ 5.15		
Around the Circle	20.90	\$20.90	\$20.90	Ione	1.20		
Around the Circle via Grand Je.	25.90	25.90	25.90	Kersey	2.15		
Antonito	12.70	10.45	8.95	La Salle	1.85		
Atwood	4.40			La Veta	7.55	\$ 5.30	\$ 3.80
Ault	2.50			Longmont	1.50		
Alamosa	11.05	8.80	7.30	Loveland	2.20		
Aspen	12.00	12.00	12.00	Lucerne	2.25		
Baileys	2.90			Lupton	1.05		
Boulder	1.20			Lake City	12.65	12.65	12.65
Buffalo	1.95			Leadville	8.00	8.00	8.00
Buena Vista	6.00	6.00	6.00	Marshall Pass	7.55	7.55	6.05
Brighton	.75			Manitou	2.60	.10	1.60
Cañon City	5.75	3.50	2.00	Monte Vista	12.10	9.85	8.35
Cimarron (Black Cañon)	11.35	11.35	11.35	Montrose	12.70	12.70	12.70
Colorado Springs	2.50		1.50	Merino	4.15		
Canfield	1.00			Nantes	1.60		
Cascade Cañon	2.90	.65	2.00	Northrop	1.00		
Central City	1.80			Orchard	3.15		
Crook	5.80			Ouray	14.80	14.80	14.80
Como	4.55			Peckham	1.70		
Corona	4.15			Parkdale (Royal Gorge)	6.00	3.95	2.45
Cassells	3.50			Pueblo	3.75	1.50	
Creede	15.20	12.95	11.45	Pine Grove	2.15		
Cripple Creek		2.50		Poncha	6.30	6.30	4.80
Delta	14.00	14.00	14.00	Pikes Peak	7.60	5.10	6.60
Del Norte	12.95	10.70	9.20	Platteville	1.40		
Dome Rock	1.50			Pierce	2.65		
Dick	1.00			Palmer Lake	2.05	.85	2.60
Durango	20.90	20.45	18.95	Pagosa Springs	21.15	18.90	17.40
Espanola	16.90	14.65	13.15	Red Cliff	9.65	9.65	9.65
Eaton	2.35			Ruedi	9.85	9.85	9.85
Erie via Brighton	1.00			Sapinero	10.45	10.45	10.45
Evans	1.95			Sargents	8.55	8.55	7.05
Florence	5.35	3.10	1.60	Silver Plume	2.55		
Fort Morgan	3.15			Sterling	4.75		
Fort Collins	2.75			Snyder	3.50		
Glenwood Springs	12.00	12.00	12.00	Salida	6.00	6.00	4.50
Green Mountain Falls	3.15	.90	2.25	Silverton	20.90	20.90	20.90
Grand Junction	15.00	15.00	15.00	Thomasville	9.60	9.60	9.60
Georgetown	2.35			Tolland	2.75		
Glenisle	2.95			Trinidad	9.05	6.15	4.40
Golden	.60			Victor	5.25	2.50	4.25
Green Mountain Falls	3.40			Valmont	1.20		
Greeley	2.05			Watkins	.90		
Gunnison	8.95	8.95	8.95	Weldon	3.15		
Henderson	.55			White Rock	1.20		
Hazletine	.45			Ward	2.50		
Hardin	2.50			Wagon Wheel Gap	14.70	12.45	10.95
Hachsel	4.85	4.20	5.55	Woodland Park	3.25	1.30	2.35
Idaho Springs	1.70						

COLORADO AND ITS ATTRACTIONS



Manitou, from Cave of the Winds.



River Canon, Colorado.

INFORMATION

About the various points of interest on "The Overland Route" can be secured by addressing any of the following agencies of the Union Pacific Railroad Company:

Atlanta, Ga.	124 Peachtree St.	J. F. VAN RENNSSELAR	Gen. Agt.
Boston, Mass.	176 Washington St.	WILLARD MASSEY	N. E. F. & P. Agt.
Cheyenne, Wyo.	120 Jackson Boul.	W. G. NEIMYER	General Agent
Chicago, Ill.	53 E. Fourth St.	W. H. CONNOR	General Agent
Cincinnati, Ohio	522 Broadway	J. C. MITCHELL	City Ticket Agent
Council Bluffs, Ia.	Transfer Depot	J. W. MAYNARD	Ticket Agent
Denver, Colo.	941 Seventeenth St.	J. C. FERGUSON	General Agent
Des Moines, Ia.	318 West Fifth St.	J. W. TURFLE	Trav. Pass'r Agt.
Detroit, Mich.	11 Port St., West	F. B. CHOATE	General Agent
Kansas City, Mo.	301 Walnut St.	H. G. KAILL	Asst. G. F. & P. Agt.
Lincoln, Neb.	1200 O Street	E. B. SLOSSON	General Agent
London, Eng.	220 Cockspar St. S.W.	B. K. DENBIGH	Europ. Traf. Agt.
Los Angeles, Cal.	557 S. Spring St.	G. F. HERR	Dist. Pass'r Agt.
Minneapolis, Minn.	21 So. Third St.	H. F. CARTER	Dist. Pass'r Agt.
New York City	287 Broadway	R. TENBROECK	General East. Agt.
Oakland, Cal.	44 San Pablo Av.	H. V. BLANDELL	Ag't. Pass'r Dept.
Ogden, Utah	Union Depot	A. B. MOSELEY	T. P. A. O. S. L. R. R.
Omaha, Neb.	1324 Farnam St.	GEO. E. ABBOTT	City P. & T. Agt.
Philadelphia, Pa.	830 Chestnut St.	J. B. DEFRIEST	General Agent
Pittsburg, Pa.	708-709 Park Bldg.	G. G. HERRING	General Agent
Portland, Ore.	3d & Washington Sts.	C. W. STINGER	C. T. A. O. R. & N. Co.
St. Louis, Mo.	903 Olive St.	L. E. TOWNSLEY	General Agent
St. Joseph, Mo.	Board of Trade Bldg.	S. E. SPORR	G. F. & P. A. S. J. & G. I.
Sacramento, Cal.	1007 Second Street	JAMES WARRACK	Frt. & Pass'r Agt.
Salt Lake City, Ut.	21 Main Street	D. R. GRAY	Gen'l Agt. O. S. L. R. R.
San Fran., Cal.	42 Powell St.	S. F. BOOTH	Gen'l Agt. Pass'r Dept.
San Jose, Cal.	19 North First St.	R. S. RUBLE	Trav. Pass'r Agt.
Seattle, Wash.	608 First Avenue	E. E. ELLIS	Gen'l Agt. O. R. & N. Co.
Spokane, Wash.	430 Riverside Ave.	H. C. MUNSON	G. A. O. R. & N. Co.
Tacoma, Wash.	1108 Pacific Ave.	ROBERT LEE	Ag't. O. R. & N. Co.
Toronto, Can.	Room 14 James Bldg.	J. O. GOODSSELL	Trav. Pass'r Agent

E. L. LOMAX,
General Passenger Agent

WM. S. BASINGER,
Asst. Gen'l Pass'r Agt.

W. H. MURRAY,
Asst. Gen'l Pass'r Agt.

OMAHA, NEB.

TRAINS EQUIPPED WITH

- Pullman Palace Sleeping Cars
- Buffet Smoking Library Cars
- Dining Cars, meals a la Carte
- Pullman Tourist Sleeping Cars
- Free Reclining Chair Cars
- Accommodations for all classes of passengers

Pullman Palace and Tourist Sleeping Car Rates

EAST AND WEST BETWEEN	Each	Each
	Double Berth, Tourist	Double Berth, Palace
Chicago and Los Angeles or San Francisco or Los Angeles	\$7.00	\$14.00
St. Louis and Portland or San Francisco or Los Angeles	6.50	13.00
Omaha, Council Bluffs, or Kansas City and Los Angeles or San Francisco	5.75	11.50
Council Bluffs or Kansas City, Portland, and Omaha	5.75	11.50
Chicago and Denver	3.00	6.00
St. Louis and Denver	2.75	5.50
Omaha or Kansas City and Denver	1.75	3.50
Denver and Los Angeles or San Francisco	4.75	9.50
Denver and Portland	4.75	9.50

Two persons can arrange to occupy one berth and share the expense.

A section costs double the above amount.