

CLEVELAND, OHIO, SEPTEMBER 28, 1941

"WASHINGTONIAN" IS STILL NEWS

Cleveland-Washington Day Train Increases in Popularity as Defense Speeds Up

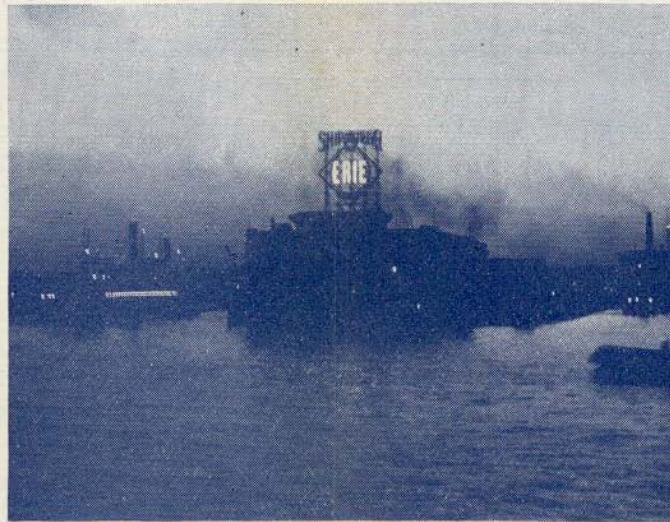
As we write this, the "Washingtonian" has been in operation for five months. It runs daily in both directions, in daylight, between Cleveland and Washington and Baltimore. The Capitol hums with national affairs. Cleveland and Baltimore hum with national defense. The "Washingtonian" hums between the three. Leave Cleveland 8:20 A. M., arrive Washington 7:10 P. M., Baltimore 8:17 P. M. Leave Baltimore 8:55 A. M., Washington 10:10 A. M., arrive Cleveland 9:15 P. M. See page 7 for all fares and page 17 for all schedules.

The equipment of these trains consists of De Luxe Coaches, Pullman, Parlor and Dining Cars of the finest type. The trip is one of great scenic beauty, interspersed with glimpses of industrial activity. You see the majestic Allegheny and Blue Ridge Mountains—the historic Cumberland Valley—the scenic beauties of Harper's Ferry. Inviting spectacles that make your ride a glorious sightseeing journey every mile of the way!

THIS FALL SEE AMERICA

  **\$90⁰⁰**
IN COACHES

BOTH coasts, National Parks, California, Colorado. Circle tour, home town to home town. Go one way, return another. Stop over anywhere. \$135 in Sleeping or Parlor Cars plus charge for space occupied.



Erie Terminal, Jersey City, at Dusk

TRAIN-TAXI PLAN ATTRACTS MANY

Erie passengers now have this service available in: CHICAGO, AKRON, CLEVELAND, YOUNGSTOWN, and BUFFALO.

In each of these cities, except Chicago, the taxicab company will furnish a cab and driver from 9:00 A.M. to 3:00 P.M. for \$5.00. In Chicago, any continuous four hours for \$5.00. Ask ticket agents.

THE ERIE TERMINAL IN MIDTOWN NEW YORK

The Erie Railroad offers direct motor coach service to and from a terminal in midtown Manhattan (in addition to existing ferry terminals), connecting with certain trains at Rutherford, N. J.

The new Erie terminal is in the Times Square Area at 260 West 42nd Street, between 7th and 8th Avenues.

The charge for the motor coach service is 50c each way for adults and 25c for children of half-fare age in addition to rail fare from or to New York or Rutherford.

Ordinary hand baggage is carried on motor coach with passenger and is transferred between motor coach and train free.

Consult time tables for schedules.

PIONEERS FOR 100 YEARS

In 1842 a shipment of milk from Orange County to New York was made on the Erie. This was the first milk ever shipped on any railroad. In 1843, four million quarts were shipped and the Erie was hailed as having revolutionized the milk business.

The first rails ever made in America were laid on the Erie (1847) between Otisville and Port Jervis. They were made by the Scranton Bros. at Slocum Hollow (now Scranton), Pa.

Welles & Co. began the express transportation business over the Erie (1849).

When the Erie was opened from the Hudson to Lake Erie no other railroad had succeeded in crossing the Appalachian range (1851). It was then the longest railroad in America.

TRAVEL ON THE INSTALLMENT PLAN

Thousands now use this way to go. Pay later. No money down. Repayment is in easy, monthly installments. Can be used on any trip or tour costing fifty dollars or more. Ask any ticket agent for full particulars.

DE LUXE COACHES ARE DELIGHTFUL

New High in Coach Comfort

Ever since railroad passenger coaches were first used the rail lines have striven to improve them. Gradually they have been developed from simple wooden seated vehicles to beautifully upholstered air-conditioned cars that reflect the individuality, as it were, of the road on which they ride.

The latest effort of the Erie in this connection has resulted in the De Luxe Coaches. These cars are, we believe, among the most comfortable of vehicles.

The seats of the main salon are of the individual reclining and rotating type. They swing in pairs to any desired direction and recline individually to the position most comfortable for the occupant. There is wide knee-room between the seats.

Separated from the main salon by a glass partition is the men's smoking room with spacious "bucket" type seats.

The women's room has a full length couch and individual, movable chairs.

The color scheme throughout the car is restful and in most excellent taste. The already spacious car has its roominess accentuated by long lines in the decorations. Walls, ceilings, upholstery and carpets blend and contrast gracefully.

Little travel niceties like dimmed lights at night, real individual drinking cups, plenty of clean towels, etc., make these cars really superb.

MEALS ON THE ERIE

We Believe You Will Like Them

One of the services that distinguish rail travel over all other forms of land or air transport is meals in a real restaurant, at a real table.

There is something about this interlude that carries out the air of unhuddled, unhurried graciousness for which train travel is famed.

On the Erie you can enjoy this pause amid most attractive surroundings at prices that should appeal to you.

People do talk about the meals they have on dining cars. We think you will find nice things to say about ours.

REFERENCE MARKS AND NOTES

IMPORTANT—When trains are indicated as stopping conditionally, Conductors should be notified of intention to leave train and Station Agent notified of intention to board train. Conditional stops are made only to receive or discharge revenue passengers.

- † Runs daily except Sunday. ♦ Stops to discharge passengers.
 § Runs daily except Sundays and Holidays. C Stops on Saturday only.
 ‡ Will not operate from these stations on Monday morning. † Stops on Holidays only.
 f Stops on signal to receive and discharge revenue passengers. *Runs Daily.
 k Runs Saturdays only. M. C. Motor Car Service. N. B. No Baggage carried.
- Note** ⊕—Times Square Motor Coach Terminal, 260 West 42nd St. between 7th and 8th Aves., New York City. Taxicab entrance on 41st St. Connection to and from Rutherford. Slight additional charge for Motor Coach service. Consult Ticket Agents.
- ab** Train 28 stops Otisville (4.43 P. M.) Sundays only.
ac Stops Dalton (5.37 A. M.) to discharge passengers from Hornell and east and on signal to receive passengers.
ad Via Buffalo & Erie Coach Corp. bus between Salamanca and Bradford.
af Train 7 stops Middletown (1.54 A. M.) Sunday and Monday mornings only to discharge passengers.
ag Stops Ridgewood (7.57 A. M.) Sundays and Holidays only.
ah Stops on signal Andover (9.51 A. M.); Belmont (10.16 A. M.) to discharge passengers from New York.
al Train 7 stops Ravenna (4.35 P. M.) Sundays only.
an Train 27 stops at Lordville (7.21 P. M.) to discharge passengers from New York.
as Train 701 will not operate west of Monroe on Holidays.
aw Trains 6 and 16 stop at Middletown (7.04 A. M.) and Goshen (7.15 A. M.) to discharge passengers from Hornell and west, and on Sundays only, to receive passengers for New York.
ax Stops Englewood Train 1 (7.50 A. M.); Train 15 (5.05 P. M.); Train 7 (12.44 A. M.) to discharge passengers from east of Hammond.
bb Stops at Paterson (3.44 P. M.) to receive passengers only.
bc Stops on signal Paterson (8.16 P. M.), Ridgewood (8.26 P. M.) to receive passengers.
bd Stops on signal Passaic (8.07 P. M.); Suffern (8.41 P. M.) to receive passengers for Hornell and west.
bf Stops Cuba (5.21 A. M.) to discharge passengers from Elmira and east and to receive for Jamestown and west.
bg Stops on signal, Friendship (10.30 A. M.); Cuba (10.44 A. M.) to discharge passengers from New York.
bh Stops Cuba (6.35 P. M.) to discharge passengers from Elmira and east and to receive for Jamestown and west.
bm Stops on signal Niles (10.36 A. M.) to discharge passengers from Pittsburgh and from Jamestown and east and to receive passengers for Cleveland.
bp Stops Niles (11.39 P. M.) to discharge passengers from Meadville and east and on signal to receive passengers for Akron and west.
bt No Agent on duty. No baggage handled on Trains 5 and 6 to or from Castle.
bu Train 6 stops at East 55th St. (5.07 P. M.) Sundays only to receive passengers for Youngstown.
bv Stops on Sundays only to discharge passengers.
bx Train 16 stops at Warren (6.18 P. M.) to discharge passengers from Akron and west.
cd For additional service between Cleveland and Youngstown see Table 5.
cg Stops on signal Ridgewood (11.13 P. M.) to discharge passengers from Binghamton and west.
cn Stops on signal Union City (9.07 P. M.); Cambridge Springs (9.26 P. M.) to discharge passengers from Jamestown and east and to receive for Youngstown and west.
cp Train 8 stops on signal (10.14 P. M.), Train 16 (9.50 A. M.) to receive passengers for east of Hammond.
cu Bus service provided between Cocheton and Lake Huntington.
cw Stops Endicott (1.37 A. M.) to discharge passengers from Port Jervis and east.
cx Stops to discharge passengers from New York.
cy Stops to discharge passengers from Cleveland and beyond.
db Train 8 stops at Ravenna (7.49 A. M.) to discharge passengers from Marion and west, and on signal to receive for Youngstown and east.
dc Stops Mantua (1.53 P. M.) to discharge passengers from Cleveland and on signal to receive passengers for Warren and east.
de Stops Barberton (5.19 P. M.) to discharge passengers from Youngstown and east and on signal to receive passengers for Mansfield and west.
df Stops on signal Mantua (9.29 A. M.) to receive passengers for Cleveland.
dg Stops at Ravenna (10.57 A. M.) to discharge passengers from Meadville and east, and on signal to receive passengers for Gallon and west.
dh Stops at (5.51 P. M.) to discharge passengers from Gallon and west, and on signal to receive passengers for Meadville and east.
dp Stops Niles (2.14 A. M.) to discharge passengers from east of Youngstown and signal to receive passengers for Cleveland.
dt No baggage carried on this train east of Hornell. Baggage will be handled on following train.
dv Stops on signal Union City (8.54 P. M.) to discharge passengers from Youngstown and west and to receive passengers for New York.
dw Stops Cuba (9.53 A. M.) to discharge passengers from Jamestown and west and to receive for Elmira and east.
dy Stops on signal Cambridge Springs (7.17 A. M.), Union City (7.34 A. M.) to discharge passengers from Chicago and to receive for Binghamton and east.
dz Stops Ridgewood (8.07 A. M.) to discharge passengers from Port Jervis and west. Has connection for Paterson, Passaic, etc., leaving Ridgewood at (8.14 A. M.) daily except Sundays and Holidays. Leave Ridgewood (8.40 A. M.) Sundays and Holidays only.
ec Bus service between New Castle and New Castle (Washington St.).
ed Bus service between Wampum and Ellwood City.
ef Stops only to receive motor coach passengers from New York.
eg Stops only to discharge motor coach passengers for New York.
eh Stops on signal Mantua (6.41 P. M.) to receive passengers for Pittsburgh.
ek Train 2 stops Suffern (6.30 P. M.), Passaic (6.59 P. M.) to discharge passengers from Binghamton and west.
en Stops on signal Paterson (9.34 A. M.), Ridgewood (9.43 A. M.) to receive passengers.
ep Train 1 stops on signal Passaic (9.27 A. M.), Suffern (9.58 A. M.) to receive passengers for Binghamton and west.
er Stops Niles (5.46 A. M.) to discharge passengers from Cleveland and west and on signal to receive for Pittsburgh.
es Stops on signal Niles (6.13 P. M.) to receive passengers for Jamestown and east, and to discharge passengers from Cleveland.
et Bus operates between Narrowsburg and Honesdale. In connection with which the Erie Railroad acts as agent only and is not responsible beyond its own line, except as such responsibility may be imposed by law with respect to baggage.
ex Stops Endicott (2.55 A. M.) to discharge passengers from Buffalo, Jamestown and west.
gt In connection with the bus service the Erie Railroad acts as agent only and is not responsible beyond its own line, except as such responsibility may be imposed by law with respect to baggage.
ha Stops at Narrowsburg (10.59 P. M.) to discharge passengers from Ridgewood and east.
hf Stops (11.14 P. M.) to discharge passengers from Pittsburgh.
ht Trains 5-557 and 560-6 carry through sleeping cars between Bradford and New York.
hu Stops to discharge passengers.
hv Stops on signal East 93rd Street (6.13 P. M.) to receive passengers.
hw Train 7 will stop at Saegertown (1.52 P. M.) to discharge passengers from Binghamton and east and to receive passengers for Marion and west.
hx Train 8 will stop at Saegertown (10.32 A. M.) to discharge passengers from Marion and west and to receive passengers for Binghamton and east.
na Train 6 stops on signal at East 93rd St. (5.12 P. M.) to receive passengers for Sharon and east.
ne Train 626 stops Saturdays only at Solon (1.39 P. M.) and Aurora (1.47 P. M.) to discharge passengers from Cleveland.
nf Stops on signal at Garrettsville-Hiram (2.47 P. M.) to receive passengers for Cleveland.
nh Stops on signal at Garrettsville-Hiram (11.04 A. M.) to discharge passengers from Hornell and east.

ERIE TICKET OFFICES AND PASSENGER STATIONS IN PRINCIPAL CITIES

- Akron, O.**—Union Station.
 (Telephone Jefferson 9141)
 B. L. BENDER, Ticket Agent.
- Binghamton, N. Y.**—Erie Station.
 (Telephone 4-3251)
 A. C. WAINSCOTT, Ticket Agent.
- Bradford, Pa.**—Erie Station.
 (Telephone 3413)
 A. J. SULLIVAN, Ticket Agent.
- Brooklyn, N. Y.**—City Ticket Office.
 155 Pierpoint St.
 (Telephone Triangle 5-7440)
 W. J. HAGENY, Ticket Agent.
- Buffalo, N. Y.**—City Ticket Office.
 6 North Division St.
 (Telephone Washington 4300)
 W. L. MCCREARY, Ticket Agent.
 Station Ticket Office
 (Lehigh Valley Terminal)
 Main and Scott Streets
 (Telephone Washington 4300)
 A. L. SETZ, Ticket Agent.
- Chicago, Ill.**—City Ticket Office. 163-165 West Jackson Blvd.
 (Telephone Harrison 4160)
 C. F. KUNGEL, Ticket Agent.
 Hotel Ticket Offices—
 CONGRESS, MORTISON, Sherman, Stevens,
 Palmer House, Merchandise Mart.
 (Telephone Harrison 2203)
 GEORGE M. NEWHART, Ticket Agent.
- Dearborn Station.**
 (Telephone Harrison 9830)
 W. E. MISCHNICK, Ticket Agent.
- 63rd St. Station**
 (Telephone Wentworth 3503)
 J. E. KING, Ticket Agent.
- Cleveland, O.**—City Ticket Office.
 913 Huron Road (Telephone Cherry 8400)
 CASPER J. MILLER, Ticket Agent.
 Erie Station. (Telephone Cherry 8400)
 J. W. STUART, Ticket Agent.
- Corning, N. Y.**—Erie Station.
 (Telephone 50)
 A. T. JOHNSON, Ticket Agent.
- Elmira, N. Y.**—Erie Station.
 (Telephone 2-0380)
 J. V. CLEARY, Ticket Agent.
- Hornell, N. Y.**—Erie Station.
 (Telephone 680)
 M. W. DELANY, Ticket Agent.
- Huntington, Ind.**—Erie Station.
 (Telephone 140)
 D. L. HERENDEN, Ticket Agent.
- Jamestown, N. Y.**—Erie Station.
 (Telephone 6076)
 FRANK PRIEST, Ticket Agent.
- Jersey City, N. J.**—Erie Station.
 (Telephone Journal Square 2-6400)
 G. B. IYING, Ticket Agent.
- Mansfield, O.**—Erie Station.
 (Telephone Canal 1423)
 J. W. GILKISON, Ticket Agent.
- Marion, O.**—Erie Station.
 (Telephone 2399)
 L. E. NEBERGALL, Ticket Agent.
- Meadville, Pa.**—Erie Station.
 (Telephone 1212)
 O. E. BLAIR, Ticket Agent.
- Middletown, N. Y.**—Erie Station.
 (Telephone 3303)
 C. R. DINEEN, Ticket Agent.
- Newark, N. J.**—Erie Station.
 (Telephone Humboldt 2-0600)
 G. J. MCMICHAEL, Ticket Agent.
- New York, N. Y.**—City Ticket Office.
 Information Bureau.
 Train Service and Fares.
 (Telephone Barclay 7-6500)
 City Ticket Office, 12 West 51st Street,
 Rockefeller Center.
 (Telephone Circle 5-7222)
 G. H. DOWN, Ticket Agent.
 West 23rd Street Station.
 (Telephone Chelsea 3-0780)
 Ticket Agent.
- Chambers Street Station.**
 (Telephone Cortlandt 7-9200)
 O. R. KRECH, Ticket Agent.
- City Ticket Office, 17 John Street.**
 (Telephone Cortlandt 7-6430 and
 7-6431)
 W. G. TEDFORD, Ticket Agent.
- Times Square Motor Coach Terminal,**
 260 West 42nd St.
 (Telephone Longacre 5-2440)
- Passaic, N. J.**—Erie Station.
 (Telephone 2-1613)
 M. J. LYNCH, Ticket Agent.
- Paterson, N. J.**—Erie Station.
 (Telephone Sherwood 2-3337)
 H. H. GRAY, Ticket Agent.
- Port Jervis, N. Y.**—Erie Station.
 (Telephone 300)
 R. FARRER, Ticket Agent.
- Sharon, Pa.**—Erie Station.
 (Telephone 6234)
 H. P. MORGAN, Ticket Agent.
- Warren, O.**—Erie Station.
 (Telephone 1000)
 G. W. KROM, Ticket Agent.
- Youngstown, O.**—Erie Station.
 (Telephone 4110)
 R. B. GETTIG, Ticket Agent.

RAILROAD AND PULLMAN FARES For Information Only. Subject to Change Without Notice

Table with columns for 'NEW YORK', 'BINGHAMTON', and 'BUFFALO'. Rows list destinations like Akron, Binghamton, Buffalo, Chicago, Cleveland, etc. Columns include 'RAILROAD TICKETS VALID IN' (Coach, Pullmans) and 'PULLMAN RATES' (Lower Berth, Upper Berth, Lower Seat Fare).

Table with columns for 'JAMESTOWN', 'CLEVELAND', and 'CHICAGO'. Rows list destinations like Akron, Baltimore, Binghamton, Buffalo, Chicago, Cleveland, etc. Columns include 'RAILROAD TICKETS VALID IN' (Coach, Pullmans) and 'PULLMAN RATES' (Lower Berth, Upper Berth, Lower Seat Fare).

RATES FOR UPPER BERTH, ROUND TRIP UPPER BERTH, SECTION, DRAWING ROOM, COMPARTMENT OR DOUBLE BEDROOM IN SLEEPING CARS

Table with columns for 'Where Lower Berth Rate Is', 'Upper Berth Rate Will Be', 'Round Trip Upper Berth Rate Will Be', 'Section Rate', 'Drawing Room Rate', 'Compartment Rate', 'Double Bed-room Rate'.

MINIMUM NUMBER OF RAILROAD TICKETS REQUIRED FOR EXCLUSIVE OCCUPANCY OF SPACE IN SLEEPING OR PARLOR CARS

Table with columns for 'Section', 'Double Bedroom', 'Compartment, Berth Service', 'Where Lower Berth Rate Is', 'Upper Berth Rate Will Be', 'Round Trip Upper Berth Rate Will Be', 'Section Rate', 'Drawing Room Rate', 'Compartment Rate', 'Double Bed-room Rate'.

Note: For section occupied by two passengers but with lower berth only prepared for night service. Applies from Cleveland to New York only; fare from New York to Cleveland round trip coach \$15.70, one way upper berth \$14.60. Railroad ticket valid for lower berth must be presented when occupying seat in parlor car or sleeping car.

TABLE 1 CONDENSED TABLE OF THROUGH TRAINS NEW YORK AND BUFFALO, CLEVELAND AND CHICAGO
(FOR LOCAL TRAINS AND INTERMEDIATE TIME OF THROUGH TRAINS SEE LOCAL TABLES)

Air-Conditioned Trains—Air-conditioned equipment has been assigned to regular sections of trains as shown herein. Every effort will be made to provide it as specified, but the right is reserved to employ non-air-conditioned cars as necessitated by volume of traffic or emergencies.

WEST BOUND		EAST BOUND	
THE ERIE LIMITED New York—Buffalo—Jamestown—Chicago Lv New York (Times Sq. Motor Coach Term.) (Note ⊕)... 8.45AM E.S.T. (W. 23rd St. Ferry does not operate on Sundays and Holidays.) Lv New York, West 23rd St.... 8.30 AM E.S.T. " " Chambers St.... 8.45 " "		THE ERIE LIMITED Chicago—Jamestown—Buffalo—New York Lv Chicago (Dearborn Sta.).... 6.00PM C.S.T. Ar Akron..... 3.37AM E.S.T. " Warren..... 4.38 " " " Youngstown..... 4.57 " " " Meadville..... 6.55 " " " Jamestown..... 8.31 " " " Buffalo (Lehigh Valley Term.) 10.55 " " " Bradford..... ad 1.00PM " " " Olean..... 9.39AM " " Lv Buffalo (Lehigh Valley Term.) 8.20 " "	
EQUIPMENT Air-Conditioned Sleeping Cars: New York to Chicago—12 Section, 2 Double Bedroom. Salamanca to Chicago—10 Section, 2 Compartment and Drawing Room. Air-Conditioned Diner-Lounge Car: New York to Chicago. Air-Conditioned De Luxe Coaches: New York to Chicago. (Spacious Ladies Lounge.) Air-Conditioned Coach—Diner: New York to Buffalo.		EQUIPMENT Air-Conditioned Sleeping Car: Chicago to New York—10 Section, 2 Compartment and Drawing Room. Air-Conditioned Diner-Lounge Car: Chicago to New York. Air-Conditioned De Luxe Coaches: Chicago to New York. (Spacious Ladies Lounge.) Air-Conditioned Coach—Diner: Buffalo to New York.	
THE LAKE CITIES New York—Buffalo—Cleveland Lv New York (Times Sq. Motor Coach Term.) (Note ⊕)... 7.25PM E.S.T. (W. 23rd St. Ferry does not operate on Sundays and Holidays.) Lv New York, West 23rd St.... 7.10 PM E.S.T. " " Chambers St.... 7.30 " "		THE LAKE CITIES Cleveland—Buffalo—New York Lv Cleveland..... 5.00PM E.S.T. " Warren..... 6.05 " " " Youngstown..... 6.42 " " " Meadville..... 8.17 " " " Jamestown..... 9.54 " " " Bradford..... 9.40 " " " Salamanca..... 10.41 " " " Olean..... 11.06 " " " Buffalo (Lehigh Valley Term.) 9.45 " " Ar Elmira..... 2.02AM " " " Ridgewood..... dz 8.07 " " " Jersey City..... 8.40 " " " New York, Chambers St.... 8.54 " " " " West 23rd St.... 9.10 " " (W. 23rd St. Ferry does not operate on Sundays and Holidays.) Ar New York, Times Sq. Motor Coach Term. (Note ⊕)... 7.35 PM E.S.T.	
EQUIPMENT Air-Conditioned Sleeping Cars: New York to Cleveland—10 Section, 1 Compartment and Drawing Room. New York to Bradford—10 Section, 2 Compartment and Drawing Room. (Sleeping Car may be occupied at Bradford until 8.00 A. M.) Air-Conditioned Diner-Lounge Car: New York to Youngstown. Air-Conditioned Coaches: New York to Cleveland. Coaches: Hornell to Buffalo.		EQUIPMENT Air-Conditioned Sleeping Cars: Cleveland to New York—10 Section, 1 Compartment and Drawing Room. Bradford to New York—10 Section, 2 Compartment and Drawing Room. Air-Conditioned Diner-Lounge Car: Youngstown to New York. Air-Conditioned Coaches: Cleveland to New York. Coaches: Buffalo to Hornell.	
THE MIDLANDER New York—Jamestown—Akron—Chicago Lv New York (Times Sq. Motor Coach Term.) (Note ⊕)... 7.25PM E.S.T. (W. 23rd St. Ferry does not operate on Sundays and Holidays.) Lv New York, West 23rd St.... 7.10 PM E.S.T. " " Chambers St.... 7.30 " "		THE MIDLANDER Chicago—Akron—Jamestown—New York Lv Chicago (Dearborn Sta.).... 9.35AM C.S.T. " Marion..... 3.26PM E.S.T. " Akron..... 5.24 " " " Youngstown..... 6.42 " " " Meadville..... 8.17 " " " Jamestown..... 9.54 " " " Ridgewood..... dz 8.07AM " " Ar Jersey City..... 8.40 " " " New York, Chambers St.... 8.54 " " " " West 23rd St.... 9.10 " " (W. 23rd St. Ferry does not operate on Sundays and Holidays.) Ar New York, Times Sq. Motor Coach Term. (Note ⊕)... 8.55 AM E.S.T.	
EQUIPMENT Air-Conditioned Sleeping Car: New York to Chicago—10 Section, 1 Compartment and Drawing Room. Air-Conditioned Diner-Lounge Car: New York to Chicago. (Spacious Ladies Lounge.) Air-Conditioned De Luxe Coach: New York to Chicago.		EQUIPMENT Air-Conditioned Sleeping Car: Chicago to New York—10 Section, 1 Compartment and Drawing Room. Air-Conditioned Diner-Lounge Car: Huntington to New York. Air-Conditioned De Luxe Coach: Chicago to New York. (Spacious Ladies Lounge.)	
PACIFIC EXPRESS New York—Buffalo—Jamestown—Chicago (W. 23rd St. Ferry does not operate on Sundays and Holidays.) Lv New York, W. 23rd St.... 11.55PM E.S.T. " " Chambers St.... 12.00Mid. " " " Jersey City..... 12.25AM " " " Elmira..... 7.40 " " Ar Buffalo (Lehigh Valley Term.) 12.10PM " " Lv Olean..... 11.10AM " " Ar Salamanca..... 11.34 " " Lv Jamestown..... 12.29PM " " " Meadville..... 2.05 " " " Youngstown..... 3.38 " " " Warren..... 4.07 " " " Akron..... 5.09 " " Ar Chicago (Dearborn Sta.).... 1.00AM C.S.T.		PACIFIC EXPRESS Chicago—Jamestown—New York Lv Chicago (Dearborn Sta.).... 10.00PM C.S.T. " Akron..... 7.19AM E.S.T. " Warren..... 8.19 " " " Youngstown..... 8.47 " " " Meadville..... 10.25 " " " Jamestown..... 12.14PM " " " Salamanca..... 1.18 " " " Olean..... 1.44 " " Ar Elmira..... 5.20 " " " Binghamton..... 6.27 " " " Jersey City..... 11.45 " " " New York, Chambers St.... 11.59 " " " " West 23rd St.... " " (W. 23rd St. Ferry does not operate on Sundays and Holidays.) Ar New York, Times Sq. Motor Coach Term. (Note ⊕)... 11.45 PM E.S.T.	
EQUIPMENT Air-Conditioned Sleeping Car: New York to Salamanca—10 Section, 2 Compartment and Drawing Room Car. (Sleeper open Jersey City at 9.30 P. M.) Air-Conditioned Diner-Lounge Car: Binghamton to Marion. Air-Conditioned Salon Coaches: New York to Chicago.		EQUIPMENT Air-Conditioned Sleeping Cars: Chicago to Hornell—(Daily) 12 Section, 2 Double Bedroom, Chicago to New York (Saturdays only) 12 Section, 2 Double Bedroom. (Sleeper open at Chicago at 9.15 P. M.) Air-Conditioned Diner-Lounge Cars: Chicago to Huntington. Marion to New York. Air-Conditioned Salon Coaches: Chicago to New York.	
THE MOUNTAIN EXPRESS New York—Binghamton—Elmira—Hornell Lv New York (Times Sq. Motor Coach Term.) (Note ⊕)... 2.55PM E.S.T. (W. 23rd St. Ferry does not operate on Sundays and Holidays.) Lv New York, West 23rd St.... 2.50 PM E.S.T. " " Chambers St.... 3.00 " "		ATLANTIC EXPRESS Chicago—Jamestown—New York Lv Buffalo (Dearborn Sta.).... 5.35PM E.S.T. " Hornell..... 8.35 " " " Corning..... 9.43 " " " Elmira..... 10.13 " " " Binghamton..... 11.50 " " Ar Jersey City..... 5.25AM " " " New York, Chambers St.... 5.54 " " " " W. 23rd St.... " " (W. 23rd St. Ferry does not operate on Sundays and Holidays.)	
EQUIPMENT Air-Conditioned Diner-Lounge Car: New York to Binghamton. Coaches: New York to Hornell.		SOUTHERN TIER EXPRESS Buffalo—Hornell—Elmira—Binghamton—New York Lv Buffalo..... 5.35PM E.S.T. " Hornell..... 8.35 " " " Corning..... 9.43 " " " Elmira..... 10.13 " " " Binghamton..... 11.50 " " Ar Jersey City..... 5.25AM " " " New York, Chambers St.... 5.54 " " " " W. 23rd St.... " " (W. 23rd St. Ferry does not operate on Sundays and Holidays.)	

TABLE 2 WESTBOUND

NEW YORK—ELMIRA

Hudson and Manhattan Tube Trains operate between New York and Erie Railroad Station in Jersey City.
 To Erie Station, Jersey City—From Downtown New York—Train marked "Hoboken"—Fare 8 cents.
 From Uptown New York—Train marked "Journal Square"—Fare 10 cents.
 (West 23rd Street Ferry does not operate Sundays and Holidays)

Miles from New York	Eastern Standard Time	55	59	1	701	9	703	251	255	61	27	63	65	67	259	69	71	5	15	705	7	51	
Note	NEW YORK Times Sq. Motor Coach Term. Lv West 23rd St. Lv	D'y	Sun. only	Daily	Sun. and Hol. only	Daily	Sun. only	Sat. only	Sun. only	Daily Ex. Sun.	Daily	Daily Ex. Sun. and Hol.	Daily Ex. Sat. and Hol.	Daily Ex. Sat. and Hol.	Sat. & Hol. only	Sat. & Hol. only	Daily Ex. Sat. Sun. & Hol.	Daily	D'y	Sun. only	Daily	Daily Ex. Sun.	
		AM	AM	AM	AM	AM	PM	PM	PM	PM	PM	PM	PM	PM	PM	PM	PM	PM	PM	PM	PM	PM	Night
	Chambers St. Lv	4 30	8 00	8 45	9 00	10 40	12 15	12 40	1 50	1 50	2 55	3 40	4 15	5 15	5 15	6 05	6 05	7 10	7 25	7 30	8 30	12 00	1 00
1.0	Jersey City, N. J. Rutherford, N. J. E. Rutherford	5 00	8 25	9 05	9 15	11 00	12 30	12 54	2 05	2 05	3 15	4 00	4 30	5 28	5 28	6 20	6 20	7 30	7 30	8 30	12 00	1 15	1 30
9.5	Passaic	5 23	8 49	9 37	9 45	11 29	12 45	1 27	2 27	2 28	3 30	4 14	4 45	5 42	5 42	6 35	6 35	7 45	7 45	8 45	12 25	1 15	1 30
12.5	Paterson	5 38	9 00	9 52	9 55	11 39	1 20	2 20	2 20	3 20	4 04	4 45	5 19	6 04	6 04	6 57	6 57	8 00	8 00	9 00	12 30	1 39	1 52
21.8	Ridgewood	5 49	9 12	10 00	10 03	11 47	1 31	2 31	2 31	3 31	4 14	4 45	5 19	6 04	6 04	6 57	6 57	8 00	8 00	9 00	12 30	1 39	1 52
23.2	Hobokus	5 52	9 16	10 00	10 03	11 47	1 31	2 31	2 31	3 31	4 14	4 45	5 19	6 04	6 04	6 57	6 57	8 00	8 00	9 00	12 30	1 39	1 52
24.3	Waldwick	5 55	9 19	10 00	10 03	11 47	1 31	2 31	2 31	3 31	4 14	4 45	5 19	6 04	6 04	6 57	6 57	8 00	8 00	9 00	12 30	1 39	1 52
25.7	Alendale	5 58	9 22	10 00	10 03	11 47	1 31	2 31	2 31	3 31	4 14	4 45	5 19	6 04	6 04	6 57	6 57	8 00	8 00	9 00	12 30	1 39	1 52
27.6	Ramsey	6 05	9 24	10 00	10 08	11 55	1 43	2 43	2 43	3 43	4 27	5 08	5 42	6 27	6 27	7 20	7 20	8 25	8 25	9 25	12 35	1 43	1 56
30.2	Mahwah	6 10	9 29	10 14	10 17	12 00	1 43	2 43	2 43	3 43	4 27	5 08	5 42	6 27	6 27	7 20	7 20	8 25	8 25	9 25	12 35	1 43	1 56
31.9	Suffern, N. Y.	6 14	9 33	10 14	10 17	12 00	1 43	2 43	2 43	3 43	4 27	5 08	5 42	6 27	6 27	7 20	7 20	8 25	8 25	9 25	12 35	1 43	1 56
32.6	Hillburn	6 17	9 36	10 14	10 17	12 00	1 43	2 43	2 43	3 43	4 27	5 08	5 42	6 27	6 27	7 20	7 20	8 25	8 25	9 25	12 35	1 43	1 56
33.7	Ramapo	6 20	9 39	10 14	10 17	12 00	1 43	2 43	2 43	3 43	4 27	5 08	5 42	6 27	6 27	7 20	7 20	8 25	8 25	9 25	12 35	1 43	1 56
35.6	Sloatsburg	6 26	9 40	10 20	10 23	12 00	1 46	2 46	2 46	3 46	4 30	5 11	5 45	6 30	6 30	7 23	7 23	8 28	8 28	9 28	12 40	1 46	1 59
38.2	Tuxedo	6 30	9 45	10 25	10 28	12 00	1 52	2 52	2 52	3 52	4 36	5 17	5 51	6 36	6 36	7 29	7 29	8 34	8 34	9 34	12 45	1 52	2 05
42.0	Southfields	6 33	9 48	10 28	10 31	12 00	1 58	2 58	2 58	3 58	4 42	5 23	5 57	6 42	6 42	7 35	7 35	8 40	8 40	9 40	12 50	1 58	2 11
44.4	Arden	6 39	9 54	10 34	10 37	12 00	2 00	3 00	3 00	4 00	4 44	5 25	6 00	6 44	6 44	7 37	7 37	8 42	8 42	9 42	12 55	2 00	2 13
47.0	Harriman	6 43	10 00	10 40	10 43	12 00	2 06	3 06	3 06	4 06	4 50	5 31	6 06	6 50	6 50	7 43	7 43	8 48	8 48	9 48	12 55	2 06	2 19
49.5	Monroe	6 58	10 00	10 45	10 48	12 18	2 10	3 10	3 10	4 10	4 54	5 35	6 10	6 54	6 54	7 47	7 47	8 52	8 52	9 52	12 55	2 10	2 23
52.3	Oxford			The Erie Limited																			
54.3	Greycourt			as																			
55.3	Chester			as																			
59.7	Goshen	7 10	10 34		12 32	2 19	2 25	3 25	3 25	4 05	4 44	5 25	6 07	6 07	7 00	7 00	8 05	8 05	9 05	10 05	10 10	11 05	12 00
63.7	New Hampton	7 19	10 34		12 32	2 19	2 33	3 33	3 33	4 14	4 44	5 25	6 07	6 07	7 00	7 00	8 05	8 05	9 05	10 05	10 10	11 05	12 00
67.1	Middletown, N. Y.	7 26	10 45		12 44	2 29	2 45	3 45	3 45	4 29	4 58	5 39	6 21	6 21	7 14	7 14	8 19	8 19	9 19	10 19	11 19	12 10	1 05
71.0	Howells	7 52								4 36	4 44	5 25	6 07	6 07	7 00	7 00	8 05	8 05	9 05	10 05	10 10	11 05	12 00
75.7	Otisville	8 12								4 44	4 44	5 25	6 07	6 07	7 00	7 00	8 05	8 05	9 05	10 05	10 10	11 05	12 00
80.7	Graham	8 19								4 44	4 44	5 25	6 07	6 07	7 00	7 00	8 05	8 05	9 05	10 05	10 10	11 05	12 00
88.2	Port Jervis, Ar	8 30			1 19			4 40	5 05	5 35	6 30	7 10	8 11	8 25	8 25	9 20	9 20	10 07	10 07	11 20	12 28		
88.2	Port Jervis, Lv		11 24							5 40													
90.8	Sparrowbush, N. Y.				1 29						5 40												
92.2	Mill Rift, Pa.				1 34																		
99.5	Pond Eddy				1 52																		
103.3	Parker's Glen				2 11						6 07												
107.1	Shohola				2 25						6 16												
111.1	Lackawaxen				2 25						6 16												
114.1	Westoolang Pk				2 25						6 16												
116.4	Mast Hope				2 25						6 16												
118.9	Tusten, N. Y.				2 25						6 16												
122.4	Narrowsburg				2 48						6 36												
	Honesdale et.				2 40						7 05												
128.2	Skinnars, N. Y. Lv				3 05						6 48												
131.0	Cochecton, N. Y. (Lake Hunt'g't'n)				3 05						6 48												
136.2	Calliooon, N. Y.		12 32		3 17						6 56												
143.0	Hankins				3 29						7 05												
147.3	Long Eddy				3 38						7 14												
153.6	Lordville				3 47						7 23												
164.0	Hancock		1 08		4 04						7 36												
172.1	Hale's Eddy				4 23						7 55												
177.1	Deposit		1 26		4 23						7 55												
184.2	Gulf Summit				4 49						8 21												
192.6	Susq'ha'na Pa. Ar		1 51		4 49						8 21												
200.8	Great Bend		1 53		4 51						8 23												
215.1	Binghamton, N. Y. Ar		2 25		5 12						8 23												
	Albany (D&H) Lv		7 05		5 30						4 15												
	Oneonta (D&H) Ar		7 55		5 30						4 15												
	Binghamton (D&H) Ar		11 50		5 30						4 15												
215.1	Binghamton, Lv		2 35		5 30						4 15												
223.7	Endicott		2 48		5 30						4 15												
237.1	Owego		3 05		5 30						4 15												
256.2	Waverly		3 28		5 30</																		

TABLE 3 EASTBOUND

ELMIRA—NEW YORK

Hudson and Manhattan Tube Trains operate between New York and Erie Railroad Station in Jersey City.
 From Erie Station, Jersey City—To Downtown New York—Train marked "Hudson Terminal"—Fare 8 cents.
 To Uptown New York—Train marked "33rd Street"—Fare 10 cents.
 (West 23rd Street Ferry does not operate on Sundays and Holidays.)

	50	52	204	6	16	56	58	58	30	140	62	206	70	28	2	208	208	64	dt8	68	10
Eastern Standard Time	Daily Ex. Sun. and Hol.	Daily Ex. Sat., Sun. and Hol.	Sat., Sun. and Hol. only	Daily	Daily	Daily Ex. Sun. and Hol.	Daily Ex. Sun.	Sun. only	Daily	Sun. only	Daily Ex. Sun. and Hol.	Sat. only	Sun. and Hol. only	Daily	Daily	Sun. only	Hol. only	Daily Ex. Sun. and Hol.	Daily	Daily	Daily Ex. Sun.
	AM	AM	AM	AM	AM	AM	AM	AM	AM	PM	PM	PM	PM	AM	PM	PM	PM	PM	PM	PM	PM
Elmira, N. Y. Lv.				2.02	2.02																10.13
Waverly " a																					10.36
Owego " a																					10.59
Endicott " a																					11.17
Binghamton Ar.				ex 3.07	ex 3.07																11.29
Binghamton (D.&H.) Lv.																					
Oneonta (D.&H.) Ar.																					
Albany (D.&H.) " a																					
Binghamton, N. Y. Lv.				3.20	3.20																11.50
Great Bend Pa.																					12.26
Susquehanna Ar.																					12.30
Gulf Summit N.Y. Lv.																					
Deposit " a																					
Hale's Eddy " a																					
Hancock " a																					
Lordville " a																					
Long Eddy " a																					
Hankins " a																					
Callicoon " a																					
Cochecton " a																					
(Lake Huntington)																					
Skinnerville N. Y.																					
Honesdale et " a																					
Narrowsburg N.Y. " a																					
Tusten " a																					
Mast Hope Pa.																					
Westcoaling Park " a																					
Laekawaxen " a																					
Shohola " a																					
Parker's Glen " a																					
Pond Eddy " a																					
Mill Rift " a																					
Sparrowbush N.Y. " a																					
Port Jervis Ar.				6.20	6.20																
Port Jervis Lv.	5.30	5.30	6.27	6.27	7.00	7.57	7.57	10.28			2.30			4.21	5.09	6.30	6.30	6.55	9.40		13.10
Graham " a																					
Otisville " a						7.20	8.16	10.48			2.51			ab		6.51	6.51	7.14			
Howells " a						7.26	8.22	11.02			3.10	3.57	4.25	4.56	5.42	7.09	7.09	7.30	10.15	10.45	13.47
Middletown " a		6.33	6.31	aw	aw	7.33	8.31	11.13			3.22	4.09	4.37	5.07	5.53	7.21	7.21	7.42	10.57		
New Hampton " a		6.38	6.36			7.38	8.36	11.20			3.30	4.17				7.29	7.29	7.50	11.04		
Goshen " a		6.45	6.43	aw	aw	7.44	8.42														
Chester " a		6.52	6.50			7.51	8.49														
Greycourt " a										1.54											
Oxford " a		6.56	6.55																		
Monroe " a	6.30	7.04	7.02			8.01	8.58	11.28	2.03	3.40	4.26	5.00	5.24			7.39	7.39	7.59			
Harriman " a	6.34	7.08	7.07			8.05	9.05	11.34	2.07	3.48	4.31	5.05	5.28			7.47	7.47	8.05			
Ardent " a	6.38		7.12			8.10										7.51	7.51				
Southfields " a	6.42	7.16	7.16			8.14										7.55	7.55				
Tuxedo " a	6.48	7.22	7.23			8.20	9.16	11.45			4.01	4.45				8.01	8.01	8.17			
Sloatsburg " a	6.53	7.27	7.28			8.25	9.21		2.22	4.06	4.50	5.28				8.06	8.06				
Ramapo " a																					
Hillburn " a	6.57	7.32	7.33																		
Suffern " a	7.00	7.36	7.38			8.31	9.27	11.53	2.28	4.13	5.00					8.13	8.13	8.27			
Mahwah N. J.	7.03	7.39	7.42			8.34					5.03					8.21	8.21				
Ramsey " a	7.10		7.49					12.00	2.35	4.20	5.08					8.28	8.34				
Allendale " a	7.13		7.52					12.03	2.38	4.25	5.11					8.32	8.37				
Waldwick " a	7.20						9.42	9.42	2.41	4.25	5.14					8.37	8.41				
Hohokus " a	7.23	7.52	7.55				9.44	9.44	2.44	4.28	5.17					8.41					
Ridgewood " a	7.26		ag	dz	dz	8.46	9.46	12.10	2.47	4.31	5.20										
Paterson " a							9.55	9.55	2.55	4.41	5.32										
Passaic Lv.						10.03	10.03	12.28	3.05	4.52	5.44										
Rutherford " a																					
E. Rutherford " a																					
Jersey City " a	7.58	8.22	8.28	8.40	8.40	9.14	10.25	10.35	12.50	3.27	5.15	6.10	6.30	6.40	7.20	9.12	9.25	9.25	11.45	12.42	5.25
NEW YORK																					
Chambers St. " a	8.11	8.34	8.40	8.54	8.54	9.27	10.39	10.54	1.04	3.39	5.33	6.24	6.42	6.54	7.34	9.24	9.39	9.39	11.59	12.54	5.39
West 23rd St. " a	8.35	8.50	8.50	9.10	9.10	9.53	10.50		1.20	3.54	5.45	6.36	6.54	7.05	7.50						
Times Sq. Motor Coach Term. Ar.				8.55	8.55																
Note ⊕																					
	AM	AM	AM	AM	AM	AM	AM	AM	PM	PM	PM	PM	PM	PM	PM	PM	PM	PM	PM	AM	AM

For Explanation of Reference Marks and Notes, See Pages 5 and 6.

For Equipment of Trains, See Pages 9, 10 and 28.

TABLE 4 WESTBOUND

ELMIRA—CHICAGO

EASTBOUND

Miles from New York	Eastern Standard Time					Miles from Chicago	Central Standard Time					
	7	1	27	5	15		2	dt 8	10	6	16	620
	Daily	Daily	Daily	Daily	Daily		Daily	Daily	Daily Ex. Sun.	Daily	Daily	Sun. only
	PM	AM	PM	PM	PM		PM	PM	PM	PM	AM	PM
0.0	Lv. NEW YORK Times Sq. Motor Coach Term. Lv.						Chicago (Dearborn Sta.) III. Lv.					
0.0	West 23rd Street Ferry does not operate on West 23rd St. Lv.						Englewood, 63d Street.					
0.0	Chambers St.						Hammond.					
1.0	Jersey City.						Crown Point.					
273.8	Elmira. N. Y.						Rochester.					
291.2	Corning.						Huntington. Lv.					
302.3	Addison.						Decatur.					
312.5	Cameron Mills.						Eastern Standard Time Ohio					
315.1	Cameron.						Lima.					
328.1	Canisteo.						Kenton.					
332.3	Hornell. Ar.						Marion. Ar.					
425.2	Buffalo (see Table 6). Lv.						Marion. Lv.					
332.3	Hornell. Ar.						Galion.					
341.5	Alfred.						Mansfield.					
349.9	Andover.						Ashland.					
358.5	Wellsville.						Rittman.					
366.9	Belmont.						Wadsworth.					
374.4	Friendship.						Barberton.					
383.3	Cuba.						Akron. Ar.					
395.7	Olean.						Kent. Lv.					
399.1	Allegany.						Ravenna.					
413.6	Salamanca. Ar.						Cleveland (See Table 5). Lv.					
430.2	Bradford (See Table 10). Ar.						Warren (cd).					
413.6	Salamanca. Lv.						Niles (cd).					
431.1	Randolph.						Girard (cd).					
447.3	Jamestown (Chautauqua Lake). Ar.						Youngstown (cd). Ar.					
	Buffalo (See Table 8). Lv.						Pittsburgh (See Table 5). Ar.					
447.3	Jamestown (Chautauqua Lake). Lv.						Youngstown. Lv.					
474.2	Corry. Pa.						Hubbard.					
485.6	Union City.						Sharon. Pa.					
501.2	Cambridge Springs.						Greenville.					
509.5	Saegertown.						Meadville. Ar.					
515.9	Meadville. Ar.						Meadville. Lv.					
515.9	Meadville. Lv.						Saegertown.					
542.1	Greenville.						Cambridge Springs.					
558.2	Sharon.						Union City.					
564.2	Hubbard. Ohio						Corry.					
571.8	Youngstown. Ar.						Jamestown (Chautauqua Lake). Ar.					
	Pittsburgh (See Table 5). Lv.						Buffalo (See Table 8). Ar.					
571.8	Youngstown (cd). Lv.						Jamestown (Chautauqua Lake). Lv.					
576.4	Girard (cd).						Salamanca. Ar.					
580.6	Niles (cd).						Bradford (See Table 10). Lv.					
585.7	Warren (cd).						Salamanca. Lv.					
638.3	Cleveland (See Table 5). Ar.						Allegany.					
609.6	Ravenna.						Olean.					
615.9	Kent. Ar.						Cuba.					
626.0	Akron. Ar.						Friendship.					
633.3	Barberton.						Belmont.					
639.9	Wadsworth.						Wellsville.					
644.3	Rittman.						Andover.					
676.5	Ashland.						Alfred.					
693.2	Mansfield.						Hornell. Ar.					
708.6	Galion.						Buffalo (See Table 6). Lv.					
729.6	Marion. Ar.						Hornell.					
729.6	Marion. Lv.						Canisteo.					
754.5	Kenton.						Cameron.					
781.5	Lima.						Cameron Mills.					
808.8	Ohio City.						Addison.					
	Central Standard Time						Corning.					
825.3	Decatur. Ind.						Elmira.					
856.1	Huntington. Ar.						Jersey City.					
856.1	Huntington. Lv.						NEW YORK					
897.8	Rochester.						Chambers St.					
962.4	Crown Point.						West 23rd Street.					
978.1	Hammond.						West 23rd Street Ferry does not operate on Times Sq. Motor Coach Term. Ar.					
992.4	Englewood, 63d St. III.						Note ⊕					
998.7	Chicago (Dearborn Sta.) Ar.											

Dining Car Service

Table D'Hote prices range as follows: Breakfast 50c to 75c, Luncheon 60c to \$1.00, Dinner 85c to \$1.10. A meal on our trains is always a pleasant interlude. Makes the journey seem shorter, too. The freshest food the

market affords, cooked by expert chefs and served in the comfort of spacious Diner-Lounge Cars. If you prefer a light snack without going to the Diner the waiter will bring sandwiches, fruit, coffee, etc., right to your seat.

TABLE 5 DETROIT—TOLEDO—CLEVELAND—YOUNGSTOWN—PITTSBURGH—WASHINGTON—BALTIMORE

Miles from Cleveland	Eastern Standard Time	688	624	626	6	628	686	620	Miles from Baltimore	Eastern Standard Time	629	619	5	685	623	679	687
		Daily	Daily	Daily	Daily	Ex Sun & Hol.	Daily	Sun. only			Ex Sun & Hol.	Sun. only	Daily	Daily	Daily	Daily	Daily
0.0	Detroit.....Lv.	12.30						1.15	0.0	Baltimore (Mt. Royal Sta.)Lv.							
0.0	Toledo.....Lv.	2.13	4.33	8.00				3.00	1.5	Baltimore (Camden Sta.).....			10.43		9.00	12.13	4.40
3.3	Cleveland.....Lv.	4.25	8.20	1.15	5.00	5.30	6.00	9.00	38.3	Washington, D. C.Ar.			11.30		9.40	1.00	5.25
5.6	E. 93d St., Cleveland.....Lv.	8.27	1.23	bu	na	5.37	6.08	9.08	38.3	Washington, D. C.Lv.			11.55		10.10	1.15	5.45
10.7	North Randall.....			ne		5.59	6.28	9.28	93.4	Solon.....			12.09		10.24	2.30	5.59
15.8	Solon.....			ne		6.05	6.34	9.33	111.7	Geauga Lake.....				1.38	11.19	3.04	
20.4	Geauga Lake.....								189.4	Cumberland.....			3.21		1.15	4.55	
23.6	Aurora.....			ne		6.10	6.39	9.38	226.6	Meyersdale.....			4.27		2.24	5.59	
30.0	Mantua.....			dc		6.18	6.47	9.45	226.2	Connellsville.....			5.59		4.05	7.30	
34.2	Jeddoe.....					6.24	6.53	9.52	281.0	McKeesport.....			6.56		5.03	8.28	
36.7	Garrettsville-Hiram.....		9.06	2.02		6.30	7.00	9.56	324.7	Bradock.....			7.05		5.12	8.36	
40.3	Mahoning.....					6.36	7.06		339.5	Pittsburgh.....Ar.			7.25		5.30	8.55	12.25
45.3	Phalanx.....					6.42	7.12		339.5	Pittsburgh.....Lv.			8.45	12.30	6.00	9.00	12.40
49.4	Leavittsburg.....					6.49	7.19	10.18	339.5	Coraopolis.....			8.59	12.45	6.14	9.14	
52.6	Warren.....	5.37	9.25	2.22	6.05	6.57	7.27	10.27	350.1	Aliquippa.....			9.09	12.56	6.23	9.23	
57.7	Niles.....		9.33	2.30	es	7.23	7.53	10.34	358.6	Beaver.....			9.17	1.04	7.31	9.31	
61.9	Girard.....					7.33	8.03	10.42	365.2	Beaver Falls.....							
66.5	Youngstown.....Ar.	6.00	9.45	2.45	6.26	7.45	8.15		368.7	New Brighton.....			9.22	1.09	6.36	9.36	
66.5	Youngstown.....Lv.	6.05	9.50	2.50					385.2	Ellwood City (ed).....			9.21	12.59	6.34	9.35	
84.2	New Castle.....Ar.	6.29	10.15	3.14					386.7	New Castle (Wash. St.)Lv.ec			9.32	1.21	6.46	9.46	
84.2	New Castle (Wash. St.)ecAr.	6.42	10.28	3.27					404.4	New Castle.....			9.45	1.33	6.59	9.59	
95.5	Ellwood City (ed).....	cy6.52	10.38	3.41					404.4	Youngstown.....Ar.			10.15	2.00	7.30	10.30	2.00
102.2	(Beaver Falls.....)	cy6.50	10.37	3.36					404.4	Youngstown.....Lv.	5.50	8.35	10.25	2.05	7.35	10.34	2.03
102.2	(New Brighton.....)								409.0	Girard.....	5.58						
105.6	Beaver.....	6.57	10.43	3.41					413.2	Niles.....	6.07	8.49	bm.	2.19	7.50	10.47	dp.
112.3	Aliquippa.....	7.06	10.52	3.50					418.3	Coraopolis.....	6.22	8.59	10.46	2.29	8.05	10.56	2.23
120.8	Coraopolis.....	7.16	11.03	4.00					421.5	Warren.....	6.28						
131.4	Pittsburgh.....Ar.	7.30	11.23	4.15					425.6	Leavittsburg.....	6.28						
131.4	Pittsburgh.....Lv.					10.40			430.6	Phalanx.....	6.36	9.08					
141.0	Bradock.....Ar.	9.21	12.02			10.55			434.2	Mahoning.....	6.52						
145.2	McKeesport.....Ar.	9.35	12.12			11.10			436.7	Garrettsville-Hiram.....	6.57	9.19	nh.	nf.	8.24	hf.	
189.3	Connellsville.....	10.35	1.12			12.08			440.9	Jeddoe.....	7.06						
244.3	Meyersdale.....	12.03	2.48			1.47			447.5	Mantua.....	7.06	df.					
281.5	Cumberland.....	1.05	3.49			2.51			450.5	Aurora.....	7.17	9.37					
359.2	Martinsburg.....	2.42	5.24			4.33			455.1	Geauga Lake.....	7.22						
372.5	Harper's Ferry.....	3.15	5.50			5.05			460.2	Solon.....	7.31						
425.7	Silver Spring.....	4.12	6.54			6.08			465.3	North Randall.....	7.39						
432.8	Washington, D. C.Ar.	4.30	7.10			6.25			467.6	E. 93d St., Cleveland.....	7.47	10.00	11.37	3.25	9.01	11.49	
432.8	Washington, D. C.Lv.	5.00	7.25			6.45			470.9	East 55th Street.....	7.53	10.06	11.50	3.31	9.07	12.03	3.28
469.4	Baltimore (Camden Sta.).....Ar.	5.42	8.10			7.26				Cleveland.....Ar.	8.03	10.15	11.50	3.40	9.15		
470.9	Baltimore (Mt. Royal Sta.).....Ar.	5.51	8.17			7.35				Toledo.....Ar.			2.42	6.15	1.00	2.55	5.32
										Detroit.....Ar.			4.25	7.50	5.10	7.35	

Cleveland-Pittsburgh Sleeping Car
 The Cleveland-Pittsburgh sleeping car operates to and from Union Terminal Cleveland via New York Central (via Ashtabula) to Youngstown, and P. & L. E. Railroad. See New York Central Time Table for schedule.

Tickets reading via Erie Railroad between Cleveland and Youngstown, and P. & L. E. Railroad between Youngstown and Pittsburgh, will be honored in this sleeping car.

THE WASHINGTONIAN
The only daylight train between Cleveland, Washington and Baltimore. De Luxe Coaches, Parlor Lounge Car and Dining Car. See Schedule on this page.

EQUIPMENT
 Detroit, Toledo, Cleveland, Youngstown, Pittsburgh, Washington, Baltimore Trains.
 ★Indicates Air-Conditioned Cars

EASTBOUND

No. 6—Daily. ★Sleeping Car (10 Section 1 Compartment and Drawing Room Car) Cleveland to New York. ★Coach, Cleveland to New York.

No. 624—The Washingtonian—Daily. ★Pullman Parlor-Diner-Lounge, Cleveland to Baltimore. ★De Luxe Coaches, Cleveland to Washington and Baltimore.

No. 626—Daily. ★Erie Parlor-Buffer Car, Cleveland to Pittsburgh. ★Coach, Cleveland to Pittsburgh.

No. 686—Daily. ★Sleeping Car for Parlor Car Service and ★Coaches, Detroit to Pittsburgh, via Cleveland. ★Diner-Lounge Car, Cleveland to Pittsburgh. ★Sleeping Car (8 Section-4 Double Bedroom), Pittsburgh to Washington. (Open 9.00 p. m., and may be occupied until 8.00 a. m.).

No. 688—Daily. ★Sleeping Car (12 Section and 2 Double Bedrooms), Chicago to Pittsburgh. ★Sleeping Car (8 Section-5 Double Bedrooms), Detroit to Pittsburgh. Through Coaches, ★Chicago and ★Detroit to Pittsburgh, via Cleveland. ★Parlor Car, ★Dining Car and ★Coaches, Pittsburgh to Washington and Baltimore.

WESTBOUND

No. 5—Daily. ★Sleeping Car (10 Section 1 Compartment and Drawing Room Car) New York to Cleveland. ★Erie Parlor-Buffer Car, Pittsburgh to Cleveland. ★Coach, Pittsburgh to Cleveland. ★Sleeping Cars (8 Section-4 Double Bedroom and ★Drawing Room), Washington to Pittsburgh. (Open 10.00 p. m., and may be occupied until 8.00 a. m.).

No. 623—The Washingtonian—Daily. ★Pullman Parlor-Diner-Lounge, Baltimore to Cleveland. ★De Luxe Coaches, Baltimore to Cleveland.

No. 679—Daily. ★Sleeping Car (12 Section and 2 Double Bedrooms), Pittsburgh to Chicago. ★Through Coaches, Pittsburgh to Chicago. ★Parlor Car, ★Dining Car and ★Coaches, Baltimore and Washington to Pittsburgh.

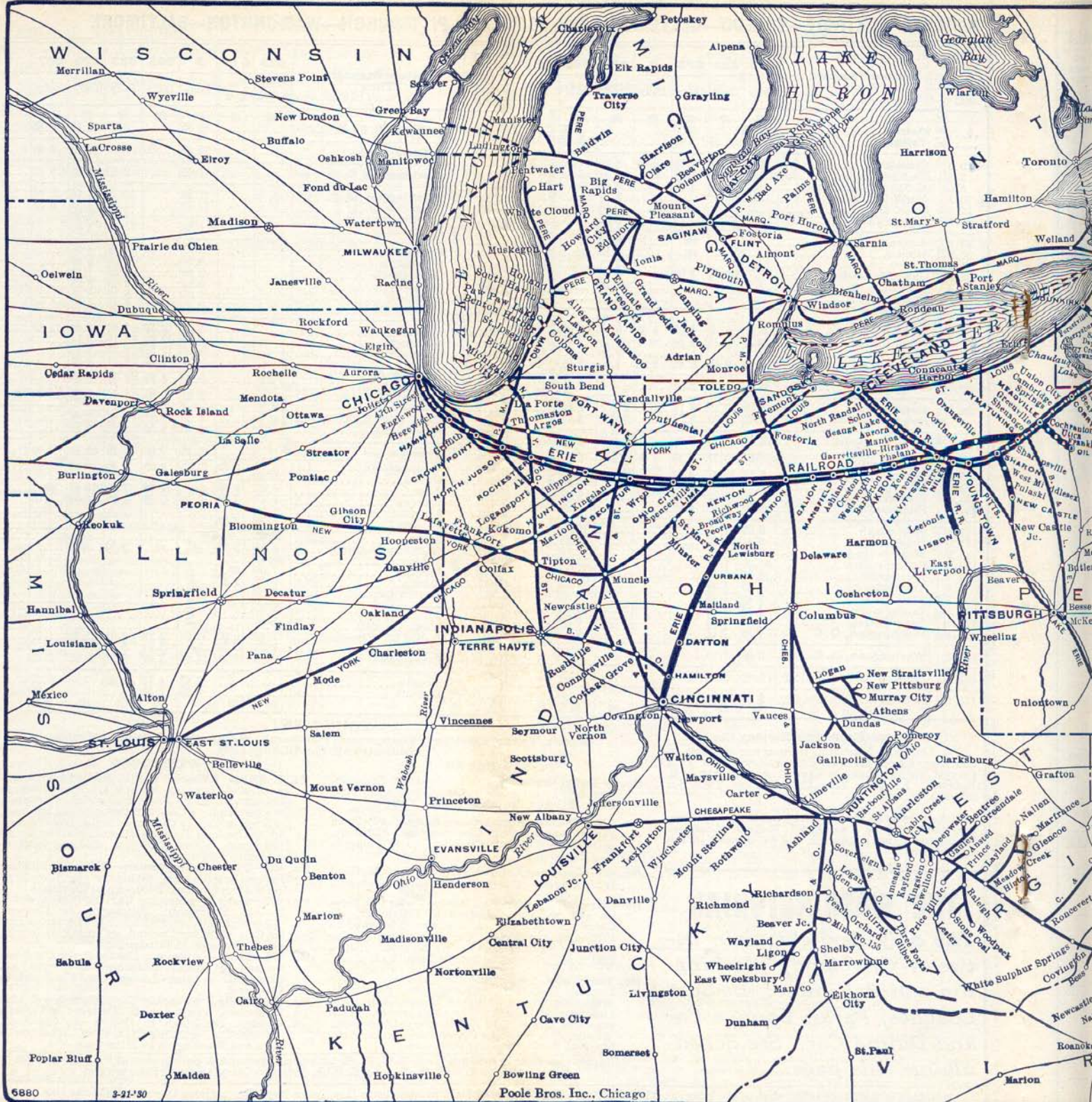
No. 685—Daily. ★Sleeping Car for Parlor Car Service and ★Coaches Pittsburgh to Detroit, via Cleveland. ★Diner-Lounge Car, Pittsburgh to Cleveland.

No. 687—Daily. ★Sleeping Car (8 Section-5 Double Bedrooms), Pittsburgh to Detroit. ★Through Coaches, Pittsburgh to Detroit via Cleveland. ★Parlor Car, ★Dining Car and ★Coaches, Baltimore and Washington to Pittsburgh.

Round-trip tickets reading via B. & O. R. R. between Cleveland & points east of Pittsburgh are honored via Erie R. R.-P. & L. E. R. R. between Cleveland and Pittsburgh.

Holidays in the above table refers to the observance of New Year's Day, Memorial Day, Independence Day, Labor Day, Thanksgiving Day and Christmas Day.

For Explanation of Reference Marks and Notes, see Pages 5 and 6.





**ERIE RAILROAD
AND CONNECTIONS**

Indicates Double Track

TABLE 6 NEW YORK AND BUFFALO

WESTBOUND Read Down				EASTBOUND Read Up		
1	7- 477	5	Miles from New York	EASTERN STANDARD TIME		
Daily	Daily Ex-Sun.	Daily		2	10	6
AM	PM	PM		PM	Ex-Sun. AM	AM
8.45	7.25	0.0	Lv. NEW YORK Ar.	7.35	8.55
				Times Square Motor Coach Term. (Note ⊕)		
8.30	11.55	7.10	0.0	Lv. West 23d St. Ar.	7.50	9.10
				et Ferry does not operate on Sundays and Holidays		
8.45	12.00	7.30	0.0	Lv. Chambers St. Ar.	7.34	8.54
				Lv. Jersey City Ar.	7.20	8.40
9.05	12.25	7.45	1.0	Binghamton	1.51	3.20
2.35	6.07	1.27	215.1	Endicott	1.30	11.17
2.48	6.21	1.27	223.7	Waverly	12.51	10.36
3.28	7.05	1.27	256.2	Elmira	12.30	10.13
3.54	7.40	2.38	273.8	Corning	12.06	9.43
4.19	8.13	3.07	291.2	Hornell	11.14	8.35
5.12	9.10	3.57	332.3	Ar. Hornell	11.00	8.25
5.27	9.25	5.00	332.3	Ar. Hornell	11.00	8.25
	9.34	5.09	338.0	Ar. Hornell	11.00	8.25
			340.7	Ar. Hornell	11.00	8.25
			344.9	Ar. Hornell	11.00	8.25
			347.2	Ar. Hornell	11.00	8.25
			349.2	Ar. Hornell	11.00	8.25
			356.3	Ar. Hornell	11.00	8.25
			358.5	Ar. Hornell	11.00	8.25
			362.5	Ar. Hornell	11.00	8.25
			366.4	Ar. Hornell	11.00	8.25
			369.1	Ar. Hornell	11.00	8.25
			372.2	Ar. Hornell	11.00	8.25
			376.4	Ar. Hornell	11.00	8.25
			382.2	Ar. Hornell	11.00	8.25
			386.5	Ar. Hornell	11.00	8.25
			393.6	Ar. Hornell	11.00	8.25
			397.5	Ar. Hornell	11.00	8.25
			399.7	Ar. Hornell	11.00	8.25
			405.3	Ar. Hornell	11.00	8.25
			408.2	Ar. Hornell	11.00	8.25
			409.5	Ar. Hornell	11.00	8.25
			414.2	Ar. Hornell	11.00	8.25
			415.5	Ar. Hornell	11.00	8.25
			422.1	Ar. Hornell	11.00	8.25
			425.2	Ar. Hornell	11.00	8.25
7.45	12.10	7.55	425.2	Ar. Buffalo	8.20	9.45
PM	PM	AM		(Lehigh Valley Terminal)	AM	PM

TABLE 7 NEW YORK—CHAUTAQUA—CHICAGO

WESTBOUND Read Down				EASTBOUND Read Up		
7-Bus	5-Bus	EASTERN STANDARD TIME		Bus-8	EASTERN STANDARD TIME	
Daily	Daily			Daily		
PM	PM			PM		
.....	7.10	Lv. NEW YORK Ar.	11.59
		Times Sq. Motor Coach Term. (Note ⊕)				
		Lv. West 23d St. Ar.	11.59			
		et Ferry does not operate on Sundays and Holidays				
		Lv. Chambers St. Ar.	11.59			
		Lv. Jersey City Ar.	11.45			
		Lv. Jamestown Lv.	12.14			
		Lv. Jamestown Ar.	11.00			
		Lv. Chautauqua Lv.	10.25			
		Ar. Chautauqua Ar.			
		Ar. Jamestown Lv.			
		Ar. Cleveland Lv.			
		Ar. Akron Lv.			
		Ar. Chicago Lv.			

Tickets sold and Baggage checked through to Chautauqua. Hand baggage checked without charge. Trunks checked at charge of 25c each.

BLACK WATER BATHS, ALDEN, N. Y.

An all year resort where sufferers from rheumatism and nervous ailments have found the Black Water Baths beneficial and curative. Alden is located 20 miles east of Buffalo on the Erie Railroad.

HOTELS AT ALDEN, N. Y.

Empire State Hotel Original Black Water Baths and Hotel Alden Inn

TABLE 8 BUFFALO—JAMESTOWN **TABLE 9 LACKAWAXEN—HONESDALE**

WESTBOUND Read Down			EASTERN STANDARD TIME			Eastbound Read Up	
519	Mile.	516	EASTERN STANDARD TIME			West- bound Read Down	East- bound Read Up
Daily		Daily				9-35	28-34
PM		AM				Daily	Daily
5.30	0.0	Lv. Buffalo (L.V. Term.) Ar.	10.55
5.48	7.4	Blasdel	10.37
6.00	13.3	Hamburg	10.27
hu	14.4	Water Valley
hu	16.8	Eden Valley
6.11	19.1	Eden Center	10.16
6.18	23.4	North Collins	10.08
6.24	27.3	Lawtons	10.01
6.30	30.4	Collins (St. Hosp.)	9.55
6.38	33.4	Gowanda	9.50
6.52	38.0	Dayton	9.38
.....	39.8	Markhams
7.02	43.3	South Dayton	9.29
7.10	48.3	Cherry Creek	9.21
7.17	52.6	Conewango	9.15
hu	60.0	Kennedy	9.04
7.35	66.4	Falconer	8.56
7.42	69.5	Ar. Jamestown	8.50

TABLE 10 NEW YORK—SALAMANCA—BRADFORD—CHICAGO

WESTBOUND Read Down			Via Salamanca and BUS of Buffalo and Erie Coach Corp. Motor Coach Co., Inc. (See Note "X" Below)		EASTBOUND Read Up		
ht	1-Bus	EASTERN STANDARD TIME			Bus-2	Bus-8	ht
5-7	Daily				Daily	Daily	560-6
PM	Daily				PM	PM	AM
7.25	Lv. NEW YORK Ar.	7.35	8.55
		Times Sq. Motor Coach Term. (Note ⊕)					
7.10	West	Lv. West 23d St. Ar.	7.50	9.10
7.30	West	Lv. Chambers St. Ar.	7.34	8.54
7.45	West	Lv. Jersey City Ar.	7.20	8.40
6.07	West	Ar. Salamanca Lv.	9.15	10.41
6.35	West	Lv. Salamanca Ar.	9.10	10.15
6.58	West	Lv. Limestone Ar.	8.45
7.10	West	Ar. Bradford Lv.	8.30	9.40
ad 4.30	West	Lv. Bradford Ar.	1.00	2.50
5.15	West	Ar. Salamanca Lv.	ad 12.15	ad 2.11
7.25	West	Lv. Salamanca Ar.	9.10	1.11
8.13	West	Ar. Jamestown Lv.	8.31	12.14
11.17	West	Ar. Youngstown Lv.	5.07	8.47
1.00	West	Ar. Cleveland Lv.
8.05	West	Ar. Akron Lv.	3.37	7.19

Trains 5-557 and 560-6 carry through sleeping car between Bradford and New York. Sleeper on train 557 will be parked at Bradford for occupancy until 8.00 A. M. Busses leave as follows: (running time approximately 45 minutes.) Lv. Salamanca for Bradford, 12.15 P.M., 2.11 P.M., 6.15 P.M., 10.22 P.M. Lv. Bradford for Salamanca, 8.00 A.M., 8.30 A.M., 4.30 P.M., 5.00 P.M. **BAGGAGE CHECKED TO BRADFORD**—Baggage will be handled only on Trains 557 and 560 between Salamanca, N. Y., and Bradford, Pa.

TABLE 11 NEW YORK—KENOZA LAKE—JEFFERSONVILLE

WESTBOUND Read Down			EASTBOUND Read Up		
1	EASTERN STANDARD TIME		2	EASTERN STANDARD TIME	
Daily			Daily		
AM			PM		
8.45	Lv. NEW YORK Ar.	7.35
	Times Sq. Motor Coach Term. (Note ⊕)				
8.30	Lv. West 23d St. Ar.	7.50
8.45	Lv. Chambers St. Ar.	7.34
9.05	Lv. Jersey City Ar.	7.20
12.32	Lv. Callicoon Ar.	3.55
	Via bus of Schultz Auto-Bus Line (See Note X below)				
12.20	Lv. Callicoon Ar.	3.30
12.50	Lv. Kenosha Lake Ar.	3.00
1.20	Ar. Jeffersonville Lv.	2.30

NOTE "X" in connection with the bus service the Erie Railroad acts as agent only and is not responsible beyond its own line, except as such responsibility may be imposed by law with respect to baggage.



Keep 'em Rolling to Keep 'em Flying

● Many months ago all 22,000 of us on the Erie tightened up our belts and declared all-out for national defense. We ordered thousands of new cars, stepped up the modernization program which had long been under way.

Today, we are moving huge quantities of parts, machinery, and supplies to "keep 'em flying" as the new army slogan says. We are ever at the service of the military, of the government—and you, too, whether you ship airplane parts, fountain pens, or peanuts. Erie delivers the goods.

You can help to keep 'em rolling for defense by giving advance notice of car requirements, by loading and unloading promptly, by loading to the load limit, and many other ways that may speed shipments.

Let's all keep 'em rolling to keep 'em flying.

Carl Howe, *Vice President*

ERIE RAILROAD • CLEVELAND, OHIO





Travel Now!

PAY LATER IN

EASY MONTHLY INSTALLMENTS

Ask Any Ticket Agent

Luxury between Trains...

...in CHICAGO



... your Parmelee transfer coupon, which is included as part of your through ticket, entitles you to transportation in smart limousine coaches from your incoming railway station to your outgoing station . . . or from your incoming station to any downtown hotel, club, theatre, store or office building. This service is also available, at a nominal charge, to passengers not holding a Parmelee transfer coupon.

Ask any Ticket Agent about

PARMELEE SERVICE

**TICKET YOUR CAR AND TRAVEL
IN COMFORT BY TRAIN**

Two first class passenger fares plus one ticket at a slightly higher fare transports two passengers and your car. Minimum charge \$54.00. Ask Erie Ticket or Freight Agents.

LOCAL PARLOR AND CLUB CAR EQUIPMENT

WESTBOUND

No. 9—Daily

Coaches.....New York to Binghamton

No. 27—Daily

Air-Conditioned Diner-Lounge Car.....New York to Binghamton
Coaches.....New York to Hornell

No. 67—Except Saturdays, Sundays and Holidays

Erie Parlor Car.....New York to Port Jervis
Coaches.....New York to Port Jervis

No. 251—Saturdays only

Erie Parlor Car.....New York to Middletown
Coaches.....New York to Middletown

EASTBOUND

No. 28—THE MOUNTAIN EXPRESS—Daily

Coaches.....Binghamton to New York

No. 56—THE TUXEDO—Except Sundays and Holidays

Erie Parlor Car.....Port Jervis to New York
Coaches.....Port Jervis to New York



USE RAILWAY EXPRESS

...FOR ANYTHING YOU HAVE TO SHIP!

A cake for a college boy, goods for retail counters, products for national defense, pets, gifts, packages—the transportation of anything—any shape, size or weight—are all RAILWAY EXPRESS specialties. They go at top-speed, and low, economical cost, with careful, intelligent handling. Pick-up and delivery at no extra charge within our regular vehicle limits in all cities and principal towns. For service, phone RAILWAY EXPRESS or Western Union.

RAILWAY EXPRESS
AGENCY INC.

NATION-WIDE SERVICE

TABLE 12 ELMIRA-ROCHESTER

Westbound Read Down		Miles	Eastern Standard Time		Eastbound Read Up	
7-467 Daily Ex. Sun. PM	468-8 Daily Ex. Sun. PM		Leave NEW YORK Times Sq. Mtr. Coach Term. (Note ⊕)	Arrive WEST 23d St. Chambers St. Jersey City	468-8 Daily Ex. Sun. PM	467-7 Daily Ex. Sun. PM
West 23rd St.	Ferry	0.0	does not operate on Sun. and Hol.	11.55	11.59	
11.55	0.0		West 23d St.	11.59		
12.00	0.0		Chambers St.	11.59		
12.25	1.0		Jersey City	11.45		
Ex. Sun. AM				Ex. Sun. PM		
7.40	0.0		Elmira	5.20		
8.13	17.4	Ar.	Corning Lv.	4.46		
8.22	17.4	Lv.	Corning Ar.	3.54		
8.29	19.3		Painted Post	3.44		
8.34	22.6		Cooper	3.36		
8.43	26.9		Campbell	3.10		
8.52	31.5		Savona	3.04		
9.04	37.7		Bath	2.54		
9.11	41.4		Kanona	2.38		
9.18	45.1		Avoca	2.26		
9.24	48.0		Wallace	2.16		
9.33	52.8		Cohocton	2.06		
9.41	57.2		Atlanta	1.52		
9.51	63.2		Wayland	1.42		
9.59	67.9		Springwater	1.32		
10.05	70.7		Websters	1.13		
10.12	74.5		Conesus	1.07		
10.18	78.3		So. Livonia	1.01		
10.25	81.9		Livonia	12.55		
10.30	84.5		South Lima	12.49		
10.35	86.2		Conesus Lake Jet.			
10.45	93.5	Ar.	Avon Lv.	12.31		

TABLE 13 SALAMANCA—DUNKIRK

Westbound Read Down		Miles	Eastern Standard Time		Eastbound Read Up	
5-527 Daily Ex. Sun. & Hol. PM	540 Daily Ex. Sun. & Hol. PM		Leave NEW YORK Times Sq. Mtr. Coach Term. (Note ⊕)	Arrive WEST 23d St. Chambers St. Jersey City Salamanca Lv.	540 Daily Ex. Sun. & Hol. PM	527-5 Daily Ex. Sun. & Hol. PM
West 23rd St.	Ferry	0.0	does not operate on Sun. and Hol.	7.25		
7.10	0.0		West 23d St.			
7.30	0.0		Chambers St.			
7.45	1.0		Jersey City			
6.07	413.6	Ar.	Salamanca Lv.			
AM				AM		
7.20	0.0	Lv.	Salamanca Ar.	5.00		
7.55	8.3		Little Valley	4.40		
8.50	15.7		Cattaraugus	4.05		
	21.9		Persia	3.35		
9.10	25.0	Ar.	Dayton Lv.	3.25		
10.55		Ar.	Buffalo Lv.	3.25		
9.40	25.0	Lv.	Dayton Ar.	3.25		
9.48	28.0		Perrysburg	3.15		
9.55	30.9		West Perrysburg	3.05		
10.05	34.9		Smith's Mills	2.55		
10.13	38.8		Forestville	2.45		
10.28	42.6		Sheridan	2.30		
10.40	46.9	Ar.	Dunkirk Lv.	2.15		

Note-HOLIDAYS in above tables refer to the observance of New Year's Day, Decoration Day, Independence Day, Labor Day, Thanksgiving Day and Christmas Day.

HUDSON AND MANHATTAN TUBE TRAINS
SCHEDULE OF RUNNING TIME
BETWEEN
ERIE R. R. JERSEY CITY TERMINAL
AND

Downtown New York—
Cortlandt St. (Hudson Terminal Bldg.)..... 6 Mins.

Uptown New York—
33rd Street and 6th Ave..... 14 "
23rd Street and 6th Ave..... 11 "
19th Street and 6th Ave..... 10 "
14th Street and 6th Ave..... 9 "
9th Street and 6th Ave..... 8 "
Christopher and Greenwich Streets..... 6 "

Allow 10 Minutes additional for connections.
Fares—Downtown 8 cents. Uptown 10 cents.

ERIE R. R. FERRY TIME TABLE
EASTERN STANDARD TIME
CHAMBERS STREET FERRY
Ferry Running Time, 9 Minutes
WEEK DAYS

Leave New York for Jersey City						Leave Jersey City for New York					
AM	AM	AM	PM	PM	PM	AM	AM	AM	PM	PM	PM
12.30	8.00	11.10	12.10	3.50	7.10	12.15	7.45	10.55	12.05	3.45	7.05
1.00	8.10	11.20	12.20	4.00	7.20	12.45	7.55	11.05	12.15	3.55	7.15
1.30	8.15	11.30	12.30	4.10	7.30	1.15	m8.02	11.15	12.25	4.05	7.25
2.00	8.20	11.40	12.40	4.20	7.40	1.45	m8.08	11.25	12.35	4.15	7.35
2.30	8.32	11.50	12.50	4.40	7.50	2.15	m8.17	11.35	12.45	4.25	7.45
3.00	8.40	12.00	1.00	4.30	8.00	2.45	m8.25	11.45	12.55	4.35	7.55
3.25	8.45		1.10	4.50	8.10	3.12	m8.31	11.55	1.05	4.45	8.05
3.50	8.50		1.20	5.00	8.20	3.35	m8.38		1.15	4.53	8.15
4.30	9.00		1.30	5.08	8.30	4.15	m8.45		1.25	5.00	8.25
5.00	9.10		1.40	m5.15	8.40	4.45	m8.54		1.35	5.05	8.35
5.30	m9.15		1.50	5.20	8.50	5.15	m9.02		1.45	5.13	8.45
5.45	9.20		2.00	5.28	9.00	5.30	m9.07		1.55	5.24	8.55
6.00	9.30		2.10	5.38	9.15	5.45	m9.18		2.05	5.35	9.05
6.15	9.40		2.20	5.48	9.30	6.00	m9.23		2.15	5.45	9.15
6.30	9.50		2.30	5.58	9.45	6.15	m9.35		2.25	5.55	9.30
6.45	10.00		2.40	6.10	10.00	6.30	m9.45		2.35	6.00	9.45
7.00	10.10		2.50	m6.15	10.15	6.45	m9.55		2.45	6.05	10.00
7.10	10.20		3.00	6.20	10.30	7.00	m10.05		2.55	6.10	10.15
7.20	10.30		3.10	6.30	11.00	7.07	m10.15		3.05	6.25	10.30
7.30	10.40		3.20	6.40	11.30	7.18	m10.30		3.15	6.35	10.45
7.38	10.50		3.30	6.50	12.00	7.25	m10.35		3.25	6.45	11.15
7.50	11.00		3.40	7.00		7.35	m10.45		3.35	6.55	11.50

a Will not run on Holidays. m Except Saturdays and Holidays.
e Holidays only.

SUNDAYS

AM	AM	PM	PM	Mid.	AM	AM	PM	PM	Mid.
12.30	8.30	12.10	4.30	8.45	12.15	8.30	12.00	4.15	8.30
1.00	8.45	12.30	4.45	9.00	12.45	8.45	12.15	4.30	8.45
1.30	9.00	12.40	5.00	9.15	1.15	9.00	12.30	4.45	9.00
2.00	9.15	1.00	5.15	9.30	1.45	9.15	12.45	5.03	9.15
2.30	9.30	1.15	5.30	9.45	2.15	10.00	1.00	5.15	9.30
3.00	9.45	1.30	5.45	10.00	2.45	10.15	1.15	5.30	9.45
4.00	10.00	1.45	6.00	10.15	3.15	10.30	1.30	5.45	10.00
4.30	10.15	2.00	6.15	10.30	4.18	10.45	1.45	6.00	10.15
5.15	10.30	2.10	6.30	11.00	5.00	11.00	2.00	6.18	10.45
5.45	10.40	2.30	6.45	11.30	5.30	11.15	2.15	6.33	11.15
6.45	11.00	2.45	7.00	12.00	6.30	11.30	2.30	6.45	11.50
7.00	11.30	3.00	7.15		7.00	11.45	2.45	7.00	
7.15	11.45	3.15	7.30		7.18		3.00	7.15	
7.30	12.00	3.30	7.45		7.30		3.15	7.25	
7.45		3.45	8.00		7.45		3.30	7.45	
8.00		4.00	8.15		8.00		3.50	8.00	
8.15		4.15	8.30		8.15		4.00	8.15	

TWENTY-THIRD STREET FERRY
Ferry Running Time, 20 Minutes
WEEK DAYS
23rd Street Ferry does not run on Sundays and Holidays

Leave New York for Jersey City						Leave Jersey City for New York					
AM	AM	PM	PM	PM	PM	AM	AM	PM	PM	PM	PM
7.40	10.00	12.30	3.10	6.05	10.45	7.18	9.33	12.30	3.15	6.45	11.35
8.00	10.30	12.55	3.40	7.10	11.55	7.45	10.00	1.00	3.35	7.30	
8.30	10.55	1.30	4.15	8.00		8.15	10.30	1.30	4.15	8.25	
8.48	11.30	2.10	4.40	8.45		8.32	11.00	2.00	4.45	9.05	
9.05	11.55	2.30	5.15	9.30		8.50	11.30	2.30	5.25	9.45	
9.40		2.50	5.45	10.05		9.10	12.00	2.45	5.40	10.25	

NO FERRY SERVICE ON SUNDAYS

FOR DEFENSE



BUY UNITED STATES SAVINGS BONDS AND STAMPS

LOCATE YOUR PLANT WHERE YOU CAN LOCATE MORE PROFITS

Ask us about industrial buildings and vacant land on Erie rails

GEO. F. WESTON

Industrial Commissioner
Erie Railroad, Midland Bldg., Cleveland, O.

WESTERN UNION

TELEGRAMS AND CABLEGRAMS accepted at all telegraph offices of this railroad.

DAY LETTERS—50 words for 1½ times the cost of a 10 word telegram.

NIGHT LETTERS—25 words for the former price of ten words. Maximum only 50 cents from coast to coast. Words over 25 charged for in groups of 5 at rates as low as a fifth of a cent per word. The longer the message, the lower the rate per word.

RESERVATION MESSAGES—Reserve travel tickets and accommodations and hotel rooms by telegraph—only 35 cents (for 15 words).

TOURATE MESSAGES—When you travel telegraph the folks at home or at the office the facts they want to know about progress of your trip—only 35 cents (for 15 words).

SUGGESTIONS

• **FREE BAGGAGE SERVICE.** Let us check your baggage to destination and relieve you of the trouble and inconvenience of carrying it to and from the train—150 pounds free on each adult ticket.

If you desire delivery to your residence or hotel at destination, ask the checking agent for information regarding delivery service and rates.

• **INTERCHANGEABLE SCRIP COUPON TICKETS** issued in \$15.00 and \$30.00 denominations are accepted on trains or at ticket offices in payment of rail passage as well as sleeping and parlor car accommodations, and also as payment for meals in restaurant cars.

• **PREPAID ORDERS.** For the convenience of patrons who do not wish to send money by mail, Erie Railroad ticket agents are prepared to sell prepaid ticket orders for the delivery of transportation, rail and Pullman, from practically all points in the United States, Canada and Mexico. These orders may also include the furnishing of cash.

In emergencies arrangements may be made for the delivery of transportation by telegraph or telephone without charge except when commercial wires are used.

• **BAGGAGE INSURANCE** by the St. Paul Fire & Marine Insurance Co. may be purchased at principal Erie ticket offices. It insures your baggage and personal effects for your entire trip anywhere in the world. Minimum premium twenty-five cents. The ticket agent can give you full particulars.

• **ERIE PLAYING CARDS** are on sale at our ticket offices, excepting in Ohio. Bridge sets one dollar, single decks fifty cents.

• **SPECIAL TOURS AND CONVENTIONS.** Our services are at the disposal of clubs, lodges and other organizations in arranging for trips to conventions and gatherings of all sorts. Concerning fares, train schedules and travel plans, consult or write to any Erie Ticket Agent, or any of the Passenger Department representatives listed on pages 37 & 38 of this folder.

STOP-OVER PRIVILEGES

Niagara Falls

Passengers holding tickets reading "via Erie Railroad" from or through Elmira to or through Youngstown or vice versa may exercise their privilege of going by way of Buffalo and stopping over for as long as ten days at Niagara Falls, but not beyond the final limit of their ticket. Upon request, the Erie Ticket Agent at Buffalo will issue without charge a round trip ticket between Buffalo and Niagara Falls. Frequent service via busses of International Ry. direct from Buffalo Terminal.

Other Points

On local one-way tickets sold at regular fares, local round-trip tickets sold at double the one-way fares, All-Year, Summer and Winter Tourist Tickets, stop-overs will be allowed on going and return trips within final limit of tickets at any Erie Railroad Station en route upon notice to conductor and without deposit of ticket.

GENERAL INFORMATION

STANDARD OF TIME—Erie Lines east of and including Ohio City, Ohio, are operated by Eastern Standard Time, Lines west of Ohio City, Ohio, by Central Standard Time. 12.01 Midnight to 12.00 Noon is indicated by light-faced type. 12.01 Noon to 12.00 Midnight is indicated by heavy-faced type.

TRAINS WILL NOT BE HELD for ferries from New York between hours of 5:00 P.M. and 6:30 P.M. Eastern Standard Time.

HOLIDAYS—The term "Holidays" (unless covered by special note under schedule) refers to the observance of New Year's Day, Lincoln's Birthday, Washington's Birthday, Memorial Day, Independence Day, Labor Day, Columbus Day, Armistice Day (Nov. 11), Election Day (November 4), Thanksgiving Day and Christmas Day.

THIS COMPANY IS NOT RESPONSIBLE FOR ERRORS in time tables, inconvenience or damage resulting from delayed trains or failure to make connections; schedules are subject to change without notice.

FARES PAID ON TRAINS—Conductors are required to charge ten (10) cents in excess of the one-way ticket fare for passengers traveling in coaches only in the territory east of Port Jervis, including side lines and branches. Buy tickets before boarding trains and avoid payment of this extra fare.

CHILDREN under five years of age are carried free when accompanied by parent or guardian; five years and under twelve, half fare, twelve years of age and over, full fare.

ADJUSTMENT OF FARES—Should any misunderstanding arise with conductors or agents, pay the fare required, take receipt and communicate with General Passenger Agent, Midland Bldg., Cleveland, Ohio.

SLEEPING AND PARLOR CAR RESERVATIONS—Space reserved by telegraph or telephone within city limit will be held until:

5:00 P.M. day prior to departure of trains leaving before noon next day.
10:00 A.M. day of departure for trains leaving between noon and 5:00 P.M.
2:00 P.M. day of departure for trains leaving after 5:00 P.M.

When application is by wire or letter from a point outside of city limit, space will be held until fifteen minutes of train time.

BAGGAGE TO BE CHECKED should be delivered at station reasonably in advance of train departure to insure its being placed aboard the train.

BAGGAGE DELIVERY IN NEW YORK CITY—All baggage checked to New York City will be sent to the West 23rd Street Station unless passenger specifies Chambers Street Station at time of checking. Account no Ferry service to West 23rd Street on Sundays or Holidays, baggage to arrive and wanted that day, should be checked to Jersey City or Chambers Street.

Baggage delivery service in New York will be performed by the Railway Express Agency.

HAND-BAGGAGE in Pullman Cars is restricted to what can be conveniently placed in the berth, seat or other accommodations purchased by the passenger.

CHICAGO PASSENGER AND BAGGAGE TRANSFER is performed by the Parmelee Company. A uniformed agent meets all incoming trains of the Erie Railroad on arrival at Dearborn Station.

ARTICLES LOST ON TRAINS or left in waiting rooms or stations, owners should apply to Lost and Found Bureau, (Baggage Room) Jersey City Depot, or address General Passenger Agent, Midland Bldg., Cleveland, Ohio, giving full description of the property, stating date of loss and number of train.

SAFETY FIRST HINTS—Carefulness on your part helps eliminate accidents. Don't get on or off a train in motion; wait for a full stop. Keep hand baggage out of car aisles; this will remove a cause of inconvenience, possibly of harm, to others. Walk carefully when entering or leaving train; high-heeled shoes are sometimes a cause of tripping or stumbling on car steps. Don't stand or walk close to the railroad track; look both ways before starting across. Courtesy toward your fellow travelers increases the pleasure of your journey.

POSTAGE STAMPS may be purchased from dining car attendants.

Daylight Saving Time will be observed in Chicago until October 26.

SEE AND KNOW AMERICA

Sight-Seeing

THE
GRAY LINE

Everywhere

MAKE YOUR RAILROAD TRIP COMPLETE... TAKE SIGHT-SEEING TOURS AT ALL IMPORTANT TOURIST POINTS



See Your Local Railroad Ticket Agent For All Information

ERIE TRAIN-CAB SERVICE

Takes you from Erie Terminal directly to your door in New York or Brooklyn



ONE Person **90c** TWO Persons **\$1.25** THREE or more **\$1.50**

Thousands have used and praised Erie Train-Cab Service.

Strangers arriving at Erie Terminal, Jersey City, are taken all the way to their destination in New York or Brooklyn. They never get "lost" and are never overcharged. Women accompanied by children appreciate this service. Even seasoned travelers enjoy the comfort of settling down in their own taxicab and forgetting about bags and car changes.

The fares shown above apply from our terminal to any place on Manhattan 110th Street and South, also to any point in the Brooklyn business district.

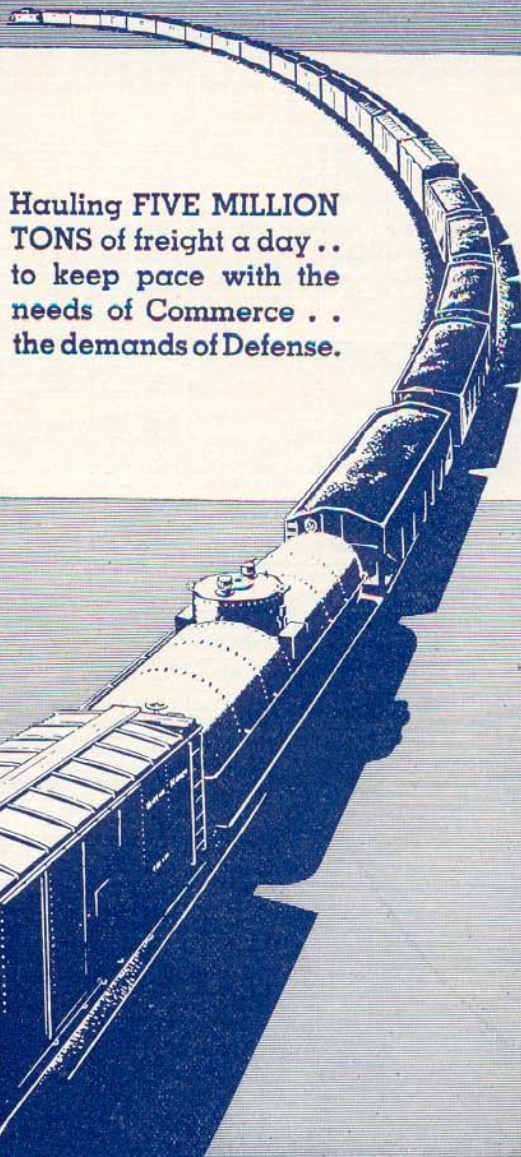
Service beyond the prescribed zones is metered from the zone limits and charged for at regular rates.

Train-Cab service is available to all who travel from stations west of Middletown, N. Y.

You can buy the Train-Cab coupon with your rail ticket at the ticket office or from the conductor on any through train and you will find your taxicab awaiting the arrival of your train at Jersey City.

Ask the conductor or ticket agent for details.

THE OLD RELIABLE



Hauling FIVE MILLION TONS of freight a day.. to keep pace with the needs of Commerce.. the demands of Defense.

ASSOCIATION OF AMERICAN RAILROADS

CONDENSED THROUGH FREIGHT SCHEDULES

FOR INFORMATION ONLY. For details, consult any freight traffic representative shown on opposite pages.

EASTBOUND — READ DOWN

WESTBOUND — READ UP

TRAIN 74 and Connections	Train NE 98 and Connections	TRAIN 98 and Connections	TRAIN 72 and Connections	TRAIN 78 and Connections	TRAIN 90 and Connections	TRAIN 86	Central Time	TRAIN 77 and Connections	TRAIN 81 and Connections	TRAIN 181 and Connections	TRAIN 91 and Connections	Train Adv 87 and Connections	TRAIN 87 and Connections
Example Day	Example Day	Example Day	Example Day	Example Day	Example Day	Example Day		Example Day	Example Day	Example Day	Example Day	Example Day	Example Day
8:00AM Mon. 9:30AM Mon. 1:10PM Mon. 4:15PM Mon. 5:50PM Mon.	5:30PM Mon. 7:00PM Mon. 1:40AM Tue. 3:30AM Tue.	5:30PM Mon. 7:00PM Mon. 1:40AM Tue. 3:30AM Tue. 6:30AM Tue.	9:45PM Mon. 11:15PM Mon. 5:00AM Tue. 8:30AM Tue.	12:15AM Mon. 6:00AM Mon. 9:00AM Mon. 11:00AM Mon.			Lv. Chicago... Ar. Lv. Hammond... Ar. Lv. Huntington... Ar. Lv. Lima... Ar. Ar. Marion... Lv.	12:01AM Thu. 10:45PM Wed. 3:15PM Wed. 11:30AM Wed.	2:00AM Thu. 12:15AM Thu. 8:00PM Wed. 5:30PM Wed.	4:00AM Thu. 2:30AM Thu. 10:00PM Wed. 6:30PM Wed.	5:00AM Thu.		
		6:50PM Mon. 1:30AM Tue. 2:30AM Tue. 3:15AM Tue.					Lv. Cincinnati... Ar. Lv. Dayton... Ar. Lv. Maitland (Spfld)... Ar. Lv. Urbana... Ar.		6:50AM Thu. 11:30PM Wed. 9:00PM Wed. 8:15PM Wed.	6:50AM Thu. 11:30PM Wed. 9:00PM Wed. 8:15PM Wed.			
8:45PM Mon. 12:01AM Tue. 12:50AM Tue.	9:00AM Tue.	9:30AM Tue. 11:50AM Tue. 2:00PM Tue.	12:15PM Tue. 3:45PM Tue. 5:00PM Tue.	2:00PM Mon. 6:55PM Mon.			Lv. Marion... Ar. Lv. Akron... Ar. Lv. Kent... Ar.	7:45AM Wed. 2:45AM Wed. 1:35AM Wed.	1:25PM Wed. 8:40AM Wed.	3:30PM Wed. 11:30AM Wed. 10:50AM Wed.	4:30PM Wed.		
2:30PM Tue. 7:00PM Mon.				2:30PM Tue.			Ar. Cleveland... Lv. Lv. Cleveland... Ar.		2:15AM Wed. 6:30AM Wed.	2:15AM Wed.			
7:30AM Tue. 11:00PM Mon. 5:00PM Mon.		7:30AM Tue.	10:00PM Tue.	7:00AM Tue.			Ar. Youngstown... Lv. Lv. Youngstown... Ar. Ar. New Castle... Lv. Lv. New Castle... Ar. Ar. Sharon... Lv. Lv. Sharon... Ar. Ar. Meadville... Lv. Lv. Meadville... Ar. Ar. Jamestown... Lv.	12:01AM Wed. 2:00AM Wed. 8:00AM Tue. 5:00PM Wed. 10:45PM Tue. 12:45AM Wed. 10:15PM Tue. 9:15PM Tue. 6:15PM Tue.		5:00AM Wed. 5:00PM Wed. 3:00PM Wed. 3:00PM Wed. 8:00AM Wed. 2:10AM Wed.			
8:30AM Tue. 12:25AM Tue. 8:25AM Tue. 3:55AM Tue.		8:00AM Tue. 10:30AM Tue. 5:10PM Tue.	12:25AM Wed. 8:00PM Tue. 9:00PM Tue. 11:45PM Tue.	8:30AM Tue. 11:30PM Mon.			Ar. Buffalo... Lv. Lv. Buffalo... Ar.			10:00PM Tue.		4:00AM Wed. 7:00AM Wed.	4:00PM Wed.
		12:45AM Wed. 7:30PM Tue.	12:01AM Wed.	8:00AM Tue. 3:00AM Tue.	9:00AM Tue.	6:15PM Tue.	Ar. Rochester... Lv. Lv. Rochester... Ar.		6:15AM Wed.		5:30PM Tue.	9:00AM Wed.	
10:30AM Tue. 12:01PM Tue.		12:15AM Wed. 2:15AM Wed.	4:30AM Wed. 6:30AM Wed.	8:00AM Tue. 12:01PM Tue.	1:00PM Tue. 3:00PM Tue.	8:50PM Tue.	Ar. Hornell... Lv. Lv. Hornell... Ar.	2:30PM Tue.	9:45PM Tue.	12:01AM Wed.	4:30AM Wed.	4:45AM Wed. 11:30AM Wed.	12:45PM Wed.
			2:15AM Thu.				Ar. Philadelphia (Rdg)... Lv.			11:30PM Mon.	11:30PM Mon.		
1:00AM Wed. 7:00PM Tue.	2:30AM Wed.	3:30AM Wed. 5:45AM Wed.	10:00AM Wed. 12:01PM Wed.	1:00AM Wed. 7:00PM Tue.	1:00AM Wed. 7:00PM Tue.	10:30PM Tue. 12:01AM Wed.	Ar. Elmira... Lv. Ar. Binghamton... Lv.	9:30AM Tue. 7:15AM Tue.	4:30PM Tue. 2:50PM Tue.	4:30PM Tue. 2:50PM Tue.		2:30AM Wed. 1:10AM Wed.	9:30AM Wed. 7:15AM Wed.
9:30AM Wed. 8:00PM Wed. 9:30PM Wed.	4:00PM Wed. 11:55PM Wed. 2:30AM Thu.	5:00PM Wed. 3:00AM Thu. 11:55AM Thu.	4:15AM Thu.	9:30AM Wed. 8:00PM Wed. 9:30PM Wed.	9:30AM Wed. 8:00PM Wed. 9:30PM Wed.		Ar. Albany (D&H)... Lv. Ar. Boston (B&M)... Lv. Ar. Portland (D&H-B&M)... Lv.	10:00AM Mon. 5:00AM Mon. 11:00PM Sun.	10:30PM Mon. 6:30PM Mon.	10:30PM Mon. 6:30PM Mon.			10:00AM Tue. 5:00AM Tue. 11:00PM Mon.
		11:00PM Tue.	8:00AM Thu.				Ar. Scranton... Lv. Lv. Scranton... Ar.		11:00PM Mon.	11:00PM Mon.			8:00AM Wed.
3:30AM Wed. 8:00PM Wed.	8:30AM Wed. 6:15PM Wed. 11:50PM Wed. 12:01PM Thu.	1:00PM Wed. 9:25PM Wed. 3:00AM Thu. 3:00PM Thu.		3:30AM Wed. 8:00PM Wed.	6:30AM Wed. 6:15PM Wed. 12:01PM Thu.		Ar. Maybrook... Lv. Ar. New Haven (NH)... Lv. Ar. Boston (NH)... Lv. Ar. Portland (NH-B&M)... Lv.		8:30AM Tue. 1:10AM Tue. 6:45PM Mon. 2:00AM Mon.	8:30AM Tue. 1:10AM Tue. 6:45PM Mon. 2:00AM Mon.			
4:30AM Wed. 6:30AM Wed. 1:30AM Wed.		12:30AM Thu. 6:30AM Thu. 4:15PM Wed.	12:30AM Thu. 6:30AM Thu. 1:00AM Thu.	4:30AM Wed. 6:30AM Wed. 1:30AM Wed.	6:00AM Wed. 8:00AM Wed. 5:00AM Wed.		Ar. Paterson... Lv. Ar. Newark... Lv. Ar. Croxton... Lv. Ar. Jersey City... Lv. NEW YORK (see Note)	5:30PM Mon. 9:00PM Mon. 1:15AM Tue.	5:30PM Mon. 9:00PM Mon. 3:30AM Tue.	5:30PM Mon. 9:00PM Mon. 3:30AM Tue.		5:30PM Tue. 9:00PM Tue. 6:45PM Tue.	5:30PM Tue. 9:00PM Tue. 10:30PM Tue.

NOTE—Freight to and from New York City and Brooklyn stations and piers is handled expeditiously on earfloats or lighters via Croxton or Jersey City. Prompt delivery or forwarding is assured.

"SHIP AND TRAVEL ERIE"

ERIE RAILROAD COMPANY

(ROBERT E. WOODRUFF AND JOHN A. HADDEN, TRUSTEES)
H. A. TAYLOR, COUNSEL FOR TRUSTEES

CHICAGO AND ERIE RAILROAD CO.

General Offices: **Midland Building, Cleveland.** Telephone, Cherry 8400.
Hudson Terminal, 50 Church Street, Corner Fulton, New York. Telephone, Cortlandt 7-9200.
Utilities Building, 327 South La Salle Street, Chicago. Telephone, Harrison 4160.

C. L. BRADLEY, Chairman of the Board,	Cleveland.	J. K. THOMPSON, Vice-President,	Cleveland.
R. E. WOODRUFF, Chief Executive Officer,	"	T. J. TOBIN, Comptroller,	"
H. D. BARBER, Vice-President,	"	G. A. W. ACHENBACH, Secretary,	"
CARL HOWE, Vice-President,	"	E. F. MORSENBROTH, Treasurer,	"
H. A. TAYLOR, Vice-President and General Counsel,	"	F. M. AMERICA, Special Representative,	"

TRAFFIC AND DEVELOPMENT

CARL HOWE, Vice-President, Cleveland.
New York. W. V. KENNEDY, Assistant Vice-President,
Chicago.
L. B. BURFORD, Assistant Vice-President, New York.
H. W. VON WILLER, Asst. to Vice-President, Cleveland.

PASSENGER—Sales and Service

R. B. ROGERS, General Passenger Agent,	Cleveland.	H. T. HARLOW, General Passenger Agent,	Chicago.
T. R. PATTON, Assistant General Passenger Agent,	Youngstown.	ALFRED FYNN, Assistant General Passenger Agent,	"
F. A. WALDRON, Assistant General Passenger Agent,	New York.	E. J. HAWERKOST, General Western Passenger Agent,	"
	C. L. CHAPMAN, General Baggage, Mail and Express Agent, New York.		

FREIGHT—Rates

L. B. BURFORD, Assistant Vice-President, New York.		F. G. LANTZ, Freight Traffic Manager, Chicago.	
O. M. MEYNE, Assistant Freight Traffic Manager,	New York.	A. BLAUDEL, Assistant Freight Traffic Manager,	Chicago.
E. N. HAMBLY, General Freight Agent,	"	E. C. HALLBERG, General Freight Agent,	"
F. M. KLITZ, Assistant General Freight Agent,	"	H. T. SWEENEY, Chief of Tariff Bureau,	"
C. E. COURTER, Assistant General Freight Agent,	"	E. A. JAEHNE, Chief of Divisions Bureau,	"
W. P. VAN DERSTINE, Chief of Tariff Bureau,	"		
J. H. SISCO, Chief of Divisions Bureau,	"		

FREIGHT—Sales and Service

G. C. MANNING, Assistant Vice-President,	New York.	W. V. KENNEDY, Assistant Vice-President,	Chicago.
E. J. DEAN, Freight Traffic Manager,	"	D. R. THOMPSON, Freight Traffic Manager,	"
G. R. WHEELER, General Freight Agent,	"	J. G. HILL, General Freight Agent,	"
J. T. MCENTEE, Assistant General Freight Agent,	Buffalo.	W. H. KOCH, Assistant General Freight Agent,	Detroit.
H. C. SCHMIDT, General Eastern Freight Agent,	New York.	R. L. MURPHY, Assistant General Freight Agent,	Cincinnati.
G. W. MADSEN, General New England Agent,	Boston.		
F. D. HARTNETT, Milk Freight Agent,	New York.	FOREIGN FREIGHT TRAFFIC	
H. B. ROGERS, General Live Stock Agent,	East Buffalo, N. Y.	W. C. OTTEN, Foreign Freight Traffic Manager,	New York.
G. A. LAMB, Freight Traffic Manager,	Cleveland.	T. W. KANE, Foreign Freight Agent,	New York.
C. E. KING, Assistant General Freight Agent,	Pittsburgh.	A. E. PETERSON, Foreign Freight Agent,	Chicago.
W. P. KROMPHARDT, Asst. General Freight Agent,	Youngstown.	W. S. PENCHARD, Export and Import Agent,	New York.

PERISHABLE AND DAIRY TRAFFIC

		J. A. RUSSELL, Manager,	Pier 20, N. R., New York.
		B. ANAPOL, Assistant Manager,	"
		H. W. BOUMANN, Western Dairy Agent,	Chicago.

COAL AND COKE

R. E. O'GRADY, Coal Traffic Manager,	Cleveland.	E. C. JULIUS, Coal Freight Agent,	Chicago.
J. A. FERGUSON, General Coal Freight Agent,	"	W. N. SPENFELT, Assistant Coal Freight Agent,	"
D. D. JAMIESON, Coal Freight Agent,	New York.	M. S. SWEENEY, Coal Freight Agent,	Pittsburgh.
A. E. BARKALOW, Assistant Coal Freight Agent,	"	H. O. DUNKLE, General Agent, Coal and Ore,	Cleveland.
J. A. MUCHA, Coal Freight Agent,	Buffalo.		

INDUSTRIAL DEVELOPMENT

GEO. F. WESTON, Industrial Commissioner, Cleveland.
H. J. HART, Industrial Agent, New York.

TRAFFIC DEPARTMENT REPRESENTATIVES

Akron, O. —80 East Exchange St. (Telephone Hemlock 8194-8195) J. P. CLARK, Division Passenger Agt. A. R. WALTON, General Agent.	Dallas, Tex. —2113 Tower Petroleum Bldg. 1905 Elm St. (Telephone 2-7352) L. J. MARION, General Agent.	Los Angeles, Cal. —510 West 6th Street. (Telephone Vandike 6323) D. C. KELSEY, General Agent.	Pittsburgh, Pa. —Gulf Building. (Telephone Grant 4831-2-3) C. E. KING, Asst. Genl. Frt. Agt.
Albany, N. Y. —Room 3, D. & H. Bldg. (Telephone 4-6051) H. G. COOKE, General Agent.	Dayton, O. —100-8 Miami Savinus Bldg. (Telephone Adams 5481) F. W. FISCHER, Div. Frt. Agt.	Marion, O. —Terminal Building (Telephone 2657) A. R. TENNIS, Division Freight Agent.	Portland, Ore. —Room 221 Pacific Bldg., 580 S. W. Yamhill St. (Telephone Beacon 3706) H. L. SKEEN, General Agent.
Atlanta, Ga. —1515-16 Hensley Bldg. (Telephone Walnut 2135) W. H. STADELMAN, General Agent.	Des Moines, Ia. —Hubbell Bldg., 904 Walnut Street, (Telephone 4-0018) H. A. BOCKMAN, General Agent.	Memphis, Tenn. —1628-9 Exchange Bldg., Madison & Second Sts. (Telephone 8-8781) R. L. MILLER, General Agent.	Rochester, N. Y. —Erie Station. (Telephone Main 2826) C. V. HARROW, Division Freight Agent.
Baltimore, Md. —1801-3 Munsey Bldg. (Telephone Plaza 8691) E. W. VAIL, General Agent.	Detroit, Mich. —Rooms 2-124 and 2-125 General Motors Bldg. (Telephone Madison 2360-2361) W. H. KOCH, Assistant General Frt. Agt.	Milwaukee, Wis. —815-9 Majestic Bldg., 231 West Wisconsin Ave. (Telephone Marquette 5555-5556) L. T. COULSTON, General Agent.	San Francisco, Cal. —681 Market St. (Telephone Sutter 3875) J. A. LLOYD, General Agent.
Birmingham, Ala. —1007 Watts Bldg. (Telephone 3-1327) WM. L. THORNTON, General Agent.	East Buffalo, N. Y. —Live Stock Exch. Bldg. (Telephone Washington 4300) H. B. ROGERS, General Live Stock Agt.	Minneapolis, Minn. —125 Third Street, So. (Telephone Main 3604) L. E. NEWMAN, General Agent.	St. Paul, Minn. —588 Robert St. (Telephone Cedar 5912) C. R. PETRY, General Agent.
Birmingham, England —13 Corporation St. MAURICE G. COOKE, General Agent.	Elmira, N. Y. —Erie Station. (Telephone 2-1621) J. W. O'HARA, Division Passenger Agt.	Newark, N. J. —1801-2 Military Park Bldg., 60 Park Place. (Telephone Market 2-0525-26-27) F. L. COLLINS, General Agent.	Seranton, Pa. —Mill & Smith Sts. (Dun- more, Pa.) (Telephone—Seranton 8191) G. W. SHUMAN, Division Freight Agent.
Boston, Mass. —160 Causeway St. (Telephone Capitol 2510-11-12) G. W. MADSEN, Gen. New Eng. Agt.	Glasgow, Scotland —82 Mitchell St. W. S. THOMPSON, General Agent.	New Haven, Conn. —401 Powell Bldg. (Telephone 7-7937) G. E. ROBB, General Agent.	Seattle, Wash. —1116-7 White Bldg., 1538 Fourth Ave. (Telephone Elgin 4834) R. J. DUNDON, General Agent.
Bradford, Pa. —Erie Station. (Telephone 3413) J. C. MOFFATT, General Agent.	Huntington, Ind. —Erie Station. (Telephone 743) F. C. MCCARTHY, Division Freight Agt.	New Orleans, La. —Room 117 Whitney Bldg. (Telephone Raymond 9786) E. W. BURNETT, General Agent.	Springfield, O. —616 First National Bank Building. (Telephone 2-6351) E. W. KELLY, General Agent.
Buffalo, N. Y. —6 North Division St. (Telephone Washington 4300) R. E. TOWNSEND, Division Passenger Agt.	Indianapolis, Ind. —145 No. Meridian St. (Telephone Lincoln 2088) T. J. WILLIAMSON, General Agent.	New York, N. Y. —630-6th Ave. Room 219, Rockefeller Center. (Telephone Circle 5-7222) F. J. WILD, Genl. Frt. Agt.	Toledo, O. —842 South Erie Street. (Telephone Main 3818) H. J. SPANGENBERG, General Agent.
Chicago, Ill. —327 South La Salle St. (Telephone Harrison 4160) B. Y. VAUGHN, Trav. Pass. Agent	Jersey City, N. J. —Erie Station (Telephone Journal Square 2-6400) P. F. ARROYO, Genl. Agt. Pass. Dept.	Omaha, Neb. —1519 Farnam St. (Telephone Jackson 4566) C. L. COX, General Agent.	Toronto, Ont. —69 Yonge Street. (Telephone Elgin 4077) E. P. MORRILL, Canadian Frt. Agt.
Cincinnati, O. —503 Gwynne Bldg. (Telephone Main 3420-3421) R. L. MURPHY, Asst. Genl. Frt. Agt.	London, E. C. 3, Eng. —38 Leadenhall St. PETER BUSWELL, General Agent.	Peoria, Ill. —980 Jefferson Building, Cor. South Jefferson & Fulton Streets. (Telephone 8007) E. T. OLANDER, General Agent	Tulsa, Okla. —Room 1511 Hunt Bldg. (Telephone 3-8513) H. F. STUDD, General Agent.
Cleveland, O. —Midland Bldg. (Telephone Cherry 8400) J. M. SKAEHLL, Division Freight Agt.	Liverpool, Eng. —10 Victoria St. A. G. TAYLOR, General Agent.	Philadelphia, Pa. —1009-10 Finance Bldg. (Telephone Rittenhouse 8075-8976) B. F. CONWAY, General Agent.	Washington, D. C. —903 Southern Bldg. (Telephone National 6075) W. J. MURRAY, General Agent.
Columbus, O. —Rooms 309-510 Atlas Bldg., 8 East Long Street. (Telephone Adams 7331) L. J. BURGOYT, General Agent.	London, E. C. 3, Eng. —38 Leadenhall St. PETER BUSWELL, General Agent.		Youngstown, O. —Terminal Building. (Telephone 41101) W. R. KROEBER, Asst. Genl. Frt. Agt.



**ERIE RAILROAD
TIME TABLES**

**ERIE RAILROAD
TIME TABLES**

The Scenic Route

BETWEEN

**NEW YORK • BUFFALO
CLEVELAND • CHICAGO**

The Scenic Route

BETWEEN

**NEW YORK • BUFFALO
CLEVELAND • CHICAGO**