

The Direct Route —

TO **Rochester** MINNESOTA

\$22⁴⁵

ROUND TRIP

Chicago to Rochester

Proportionately low first class fares from other points east and south. 6 months limit. Tickets on sale daily. See page 24.

\$18⁰⁰

ROUND TRIP

Between Chicago and St. Paul-Minneapolis

Comfortable, Roomy Coaches—Reclining Chair Cars. Tickets on sale daily. 15 day limit.

WITH its rails connecting Rochester with Chicago, Minneapolis, St. Paul, Omaha and Kansas City, the Chicago Great Western Railroad is the connecting link between this important city and the rest of the continent.

Fast Direct Service To and From Rochester

Fast, all-steel, splendidly appointed trains are operated via the Great Western every day between Rochester and Chicago, St. Paul-Minneapolis, St. Joseph and Kansas City. Direct connecting service from Omaha.

Most Convenient Stations

Direct connection with through trans-continental trains is made at Union Stations in Kansas City, Minneapolis, St. Paul and Omaha.

Grand Central Station in Chicago has fully equipped hospital room providing comforts and conveniences for those in need of them. Station is within five minutes by taxi from 12th St. or Dearborn Stations, five minutes walking distance from La Salle St. Station, no bridges to cross and five minutes by taxi from Union Station.

The Great Western Station in Rochester is most centrally located—only two blocks from the heart of the business section and conveniently near clinic buildings and hotels.

Reservations will receive prompt, careful attention

E. W. IRELAND, General Passenger Agent

122 South Michigan Avenue

Chicago





General Index to Folder

Announcements.....	Pages
Executive Officers of C. G. W.....	23
Explanation of Reference marks used in Train Schedules.....	27-28
Fares between principal points on C. G. W. and Local Stations.....	23
Fares to Rochester, Minn., from points in United States.....	26
Index to stations.....	24
Map of Chicago Great Western System.....	3-4
Parlor Car rates.....	5-6
Sleeping Car rates.....	25
Stopover Information.....	25
	29

Train schedules and equipment of through trains between:	Pages
Chicago, Des Moines, Kansas City.....	17-18
Chicago, Ft. Dodge, Omaha.....	19-20
Chicago, Rochester, St. Paul, Minneapolis.....	11 to 14
Iowa and Minnesota Branch Lines.....	21-22
Minneapolis, St. Paul, Kansas City.....	7 to 10
Minneapolis, St. Paul, Omaha.....	15-16
Minneapolis, St. Paul, Rochester.....	11-12
Traffic Representatives.....	27 to 30
Travelers' Information.....	29-30

Index to Stations

HOW TO FIND THE TRAIN SERVICE TO OR FROM ANY GIVEN POINT

First, locate the station in the index below; opposite the station are the numbers of the time tables in which the train service is shown (the numbers opposite the station in the time table refer to other tables in which train service to or from that station is shown).

Stations shown in black-faced type are terminal cities, junction or division points.

A	††Conception, Mo.....1, 5	††German Valley, Ill.....2	††Lombard, Ill.....2	P	††Swaledale, Iowa.....4
*Acme, Ia. (Lowther) 1, 2	*Conger, Iowa.....1	*Gilliat, Iowa.....4, 6	††Lorimer, Iowa.....1	*Palsville, Iowa.....4	††Sycamore, Ill.....2, 5, 6
††Afton Jct., Iowa.....1, 5	††Cornelia, Iowa.....4	††Gladbrook, Iowa.....1, 5	*Lowther, Iowa (Acme).....1	††Parnell, Mo.....1	T
††Aiken, Ill.....2	††Coulter, Iowa.....6	††Goodhue, Minn.....3	††Luray, Iowa.....1, 5	††Pearl City, Ill.....2	*Talmage, Iowa.....1
††Allison, Iowa.....6	††Council Bluffs, Iowa 4, 6	††Graf, Iowa.....2	††Lyle, Minn.....4	††Peru, Iowa.....1	††Taopi, Minn.....1, 2
*Almoral, Iowa.....1	*Cumming, Iowa.....1	††Greenland, Minn.....7	M	††Petersburg, Iowa.....2	††Tennant, Iowa.....4, 6
††Alta Vista, Iowa.....1, 2		††Green Mountain, Ia. 1, 5	††Madison Lake, Minn.....7	††Pine Island, Minn.....3	*Third St., St. Joseph, Mo.....1, 5
††Altura, Minn.....9	D	††Greta, Ill.....2	*Magill, Iowa.....4, 6	*Predmore, Minn.....9	††Thornton, Iowa.....4
*Arispe, Iowa.....1	*David, Iowa.....3	††Guilford, Mo.....1	††Maloy, Iowa.....1		*Thorpe, Iowa.....2
*Atheletan, Iowa.....1	††Dearborn, Mo.....1	††Gypsum, Iowa.....10	*Manchester, Iowa.....2	R	††Tripoli, Iowa.....8
(See Atheletan, Mo.)	De Kalb, Ill.....2		††Mankato, Minn.....7	Racine, Minn.....3	*Trout Brook, Minn.....3
††Atheletan, Mo.....1	††Dennison, Minn. 1, 2, 4	H	††Manly, Iowa.....4	††Randolph, Minn.....1, 2, 3, 4, 7	U
††Aurora, Iowa.....2	††Des Moines, Iowa.....1, 5	*Halbur, Iowa.....4, 6	††Manning, Iowa.....4, 6	††Ravenwood, Mo.....1	*Utica, Minn.....9
††Austin, Minn.....4	*Devon, Iowa.....1, 2	††Hampton, Iowa.....6	††Mantorville, Minn. 1, 4, 11	††Rea, Mo.....1	V
B	*Dewar, Iowa.....1, 5	1, 2, 3, 4, 7	††Marshalltown, Iowa.....1, 5	††Ready, Iowa.....6	*Valeria, Iowa.....1, 5
*Bailey, Iowa.....1, 2	††Diagonal, Iowa.....1, 5	*Hanley, Iowa.....1	*Martensdale.....1, 5	††Red Wing, Minn.....3	*Varco, Minn.....4
*Barney, Iowa.....1	††Dodge Center, Minn. 1, 2, 4	††Hanover, Ill.....2	††Mason City, Iowa.....4	††Reinbeck, Iowa.....1, 5	††Villa Park, Ill.....2
††Baxter, Iowa.....1, 5	Douglas, Minn.....3	††Hansell, Iowa.....6	††Mayville, Minn.....4	††Renova, Minn.....1, 2	††Vincent, Iowa.....4, 6
*Bear Creek, Minn.....9	*Dover, Minn.....9	††Harlan, Iowa.....4, 6	††Maywood, Ill.....2	*Rice, Ill.....2	††Virgil, Ill.....2
*Bee Creek, Mo.....1	††Dubuque, Iowa.....2, 5, 6	*Hay Creek, Minn.....3	††McClelland, Iowa.....4, 6	††Riceville, Iowa.....1, 2	*Viasey, Minn.....1, 2, 4
Bellewood, Ill.....2	††Dundas, Minn.....6	††Hayfield, Minn. 1, 2, 4	††McIntire, Iowa.....1, 2, 3	††Richardson, Ill.....2	
††Belmond, Iowa.....4	††Dundee, Iowa.....2	*Hicks, Iowa.....1, 5	††Meekins, Ill. (See German Valley)	*Rich Valley, Minn.....1, 2, 3, 4, 7	W
*Benning, Minn.....7	††Dunkerton, Iowa.....1, 5	††Holcomb, Ill.....2	††Melbourne, Iowa.....1, 5	††Rinard, Iowa.....4, 6	*Wallace, Minn.....7
††Bentley, Iowa.....4, 6	††Durango, Iowa.....2	*Horton, Minn.....9	††Melton, Iowa.....4	††Rochester, Minn.....1, 2, 3, 4, 9	††Waltham, Minn.....4
*Benton, Iowa.....1	††Dyersville, Iowa.....2	††Hudson, Iowa.....1, 5	††Meserve, Iowa.....4	Rodden, Ill.....1, 2, 3, 4, 9	*Warsaw, Minn.....7
††Berlin, Iowa (Lincoln) 1		I	††Millman, Iowa.....1	*Roelyn, Iowa.....4, 6	††Wasco, Ill.....2
*Berwick, Iowa.....1, 5	E	Industry, Iowa.....4, 6	††Minden, Iowa.....4, 6	*Rollingstone, Minn.....9	*Wasioja, Minn.....11
Bethany, Minn.....9	††Eagle Grove, Iowa.....4, 6	††Ingall, Ill.....2	††Mingo, Iowa.....1, 5	††Rowan, Iowa.....6	*Waterford, Minn.....7
*Beverly, Mo.....1	E. Des Moines, Iowa 1, 5	*Inver Grove, Minn.....1, 2, 3, 4, 7	††Minneapolis, Minn.....1, 2, 3, 4, 7	††St. Charles, Ill.....2, 5, 6	††Waterloo, Iowa (Union Station).....1, 5, 8
††Blockton, Iowa.....1	††Eden, Minn. 1, 2, 4, 11	*Ira, Iowa.....1, 5	*Minnesota City, Minn.....9	††St. Charles, Minn.....9	††Waterville, Minn.....7
*Bolton, Iowa.....4	††Egan, Ill.....2	††Irwin, Iowa.....4, 6	*Monette, Iowa.....1	††St. Joseph, Mo.....1, 5	*Watters, Minn.....7
*Bolckow (See Cawood)	††Elizabeth, Ill.....2		††Moorland, Iowa.....4, 6	††St. Paul, Minn. 1, 2, 3, 4, 7	††Waverly, Iowa.....6, 8
††Bolton, Ill.....2	††Elkton, Minn.....1, 2	J	††Morristown, Minn.....7	*Santiago, Iowa.....1, 5	Welch, Minn.....3
††Bondurant, Iowa.....1, 5	††Elmhurst, Ill.....2	*Judge, Minn.....3	††Myrtle, Ill.....2	Sargeant, Minn.....1, 2	††West Concord, Minn.....1, 2, 4
*Botna, Iowa.....4, 6	††Elma, Iowa.....1, 2	K	††Nerstrand, Minn. 1, 2, 4	††Savannah, Mo.....1, 5	††Westgate, Iowa.....1, 2
*Boyd, Iowa.....1, 2	††Elysian, Minn.....7	††Kansas City, Kan.....1, 5	††New Hampton, Iowa 1, 2	††Shannon City, Iowa.....1	*West Platte, Mo.....1
††Bremer, Iowa.....8	††Empire, Minn. 1, 2, 3, 4, 7	††Kansas City, Mo.....1, 5	*New Market, Mo.....1	††Shell Rock, Iowa.....6	*White Willow, Minn.....3
*Bridgewater, Minn.....7	††Esmond, Ill.....2	††Kent, Ill.....2	††Northfield, Minn.....7	*Shepard, Iowa.....1	Wightman, Iowa.....4, 6
††Bristow, Iowa.....6	Evanston, Iowa.....10	††Kenyon, Minn.....1, 2, 4	††North Glen Ellyn, Ill.....2	††Sheridan, Mo.....1	††Wilkinson, Ill.....2
*Bucknam's Crossing.....3	F	††Kidder, Iowa.....2	††North Hanover, Ill.....2	††Simpson, Minn.....3, 9	††Willow Brook, Mo.....1
*Budd, Iowa.....2	††Fairbank, Iowa.....1, 5	††Kirkman, Iowa.....4, 6	*Norwoodville, Iowa.....1, 5	††Skyburg, Minn.....1, 2, 4	Winona, Minn.....9
††Burchinal, Iowa.....4	††Fairbault, Minn.....7		*Nucl, Iowa.....4, 6	*Solberg, Iowa.....6	††Winston, Ill.....2
††Byron, Ill.....2, 5	*Farley, Iowa.....2	L	O	††Somers, Iowa.....4, 6	††Woodbine, Ill.....2
	*Fauett, Mo.....1	*Laird, Minn.....9	††Oelwein, Iowa.....1, 2, 5, 6	††South Freeport, Ill.....2	††Woodruff, Mo.....1
††Cannon Falls, Minn.....3	*Florence, Iowa.....4, 6	††Lamont, Iowa.....2	††Omaha, Neb.....4, 6	††South St. Paul, Minn.....1, 2, 3, 4, 7	*Wyeth, Mo.....1
††Carroll, Iowa.....4, 6	Forest Park, Ill.....2, 5, 6	††Leansboro, Iowa.....4, 6	††Oneida, Iowa.....2	††Spring Valley, Minn.....3	Z
*Cawood (Bolckow) Mo. 1	Fort Des Moines, Iowa (Reached by street car from Des Moines.)	††Leavenworth, Kan.....1, 5	††Oran, Iowa.....6	††Stanton, Minn.....1, 2, 4	††Zumbrota, Minn.....3
††Cedar Falls, Iowa.....1, 5	††Lehigh, Iowa.....10	††Lena, Minn.....3	*Orillia, Iowa.....1	††Stewartville, Minn.....3	
††Cedar Falls Jct.....1, 5	††Lida, Iowa.....1	††Le Roy, Minn.....3	*Oronoco, Minn.....3	††Stillman Valley, Ill.....2	† Coupon Ticket Office.
††Chicago, Ill.....2, 5, 6	††Lidderdale, Iowa.....4, 6	††Lilly Lake, Ill.....2	††Osage, Iowa.....1, 3	††Stockton, Ill.....2, 5	* Non-Agency Station.
*Churchville, Iowa.....1	††Lindenwood, Ill.....2	††Lincoln, Iowa.....1, 5	††Ostrander, Minn.....3	††Summer, Iowa.....1, 2, 8	† Telegraph Office.
††Clare, Ill.....2	††Little Cedar, Iowa.....3	††Lohrville, Iowa.....4, 6			
††Claron, Iowa.....4, 6					
††Clarksville, Iowa.....6					
Claybank, Minn.....3					
Clear Lake, Iowa.....4					
Clear Lake Jct., Iowa.....4					
††Coates, Minn. 1, 2, 3, 4, 7					

THE CHICAGO GREAT WESTERN RAILROAD IS THE DIRECT LINE TO ROCHESTER, MINNESOTA FROM THE EAST—WEST—NORTH—SOUTH

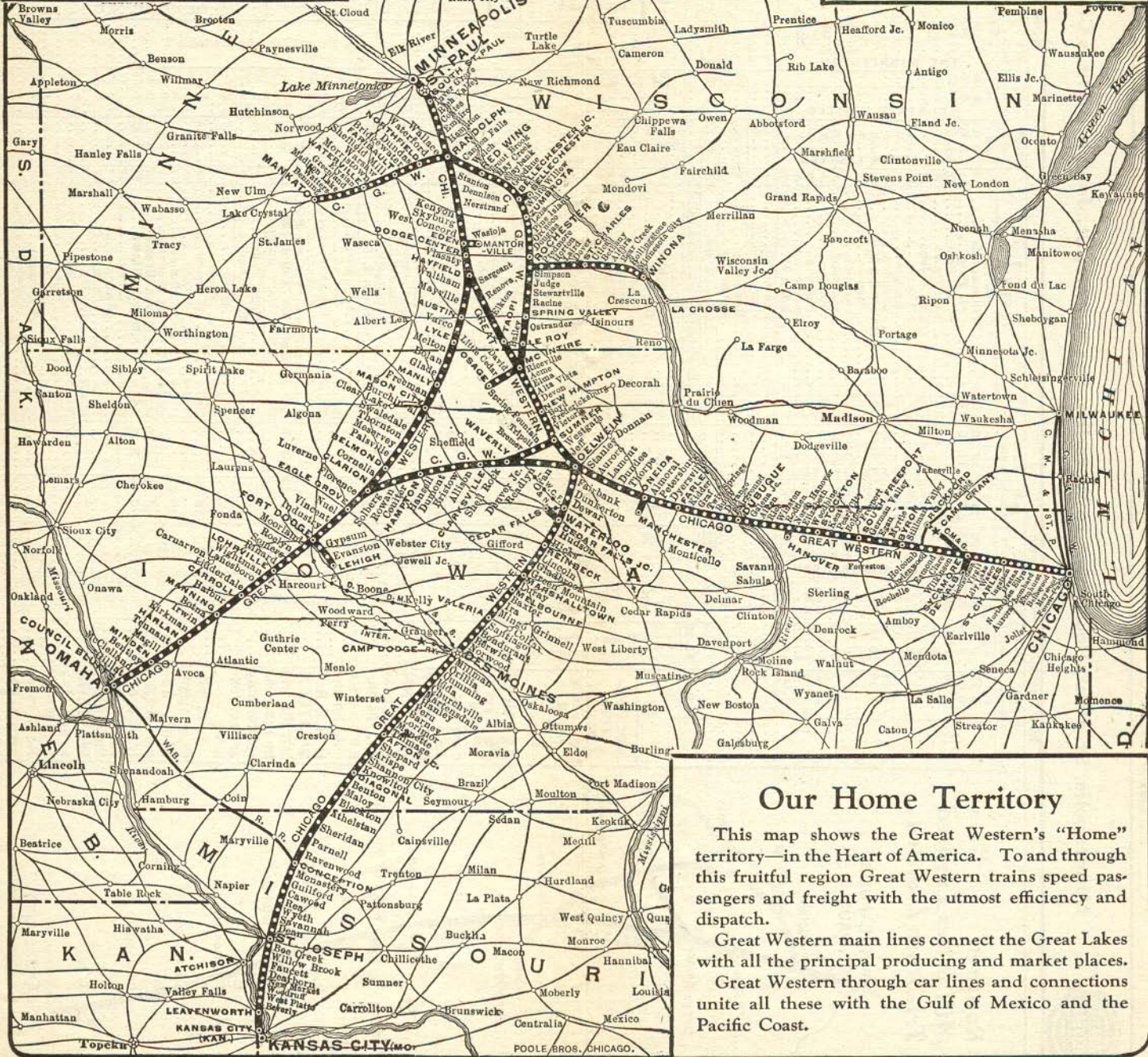
"IN THE
HEART



OF THE
NATION"

CHICAGO GREAT WESTERN RAILROAD PASSENGER STATIONS

- CHICAGO—Grand Central Station, Harrison and S. Wells Sts.
- KANSAS CITY—ST. PAUL—Union Station.
- MINNEAPOLIS—Union Station.
- DES MOINES—ST. JOSEPH—Union Station.
- OMAHA—Union Station.
- COUNCIL BLUFFS—Burlington Station.
- C. G. W. Station, Main St. and 9th Ave.



Our Home Territory

This map shows the Great Western's "Home" territory—in the Heart of America. To and through this fruitful region Great Western trains speed passengers and freight with the utmost efficiency and dispatch.

Great Western main lines connect the Great Lakes with all the principal producing and market places.

Great Western through car lines and connections unite all these with the Gulf of Mexico and the Pacific Coast.



Now—Observation Cars on the Mill Cities Limited

for Minneapolis
St. Paul
Des Moines
Kansas City

Observation Par-
lor Cars between
Minneapolis and
Kansas City, thru
all steel Pullmans,
Coaches. Dining
Service. Also thru
Pullman Kansas
City to Rochester.

The Finest Train
between
Missouri and
Minnesota

neapolis, St. Joseph and Kansas City. New type drawing-room compartment sleeping cars on night trains and parlor-observation lounge cars and dining service on day trains. Remember this, too: all tickets routed via the Chicago Rochester, MINN. and the WESTERN are good via Rochester, with stop-over within limit without extra charge.

The Great Western is the shortest way to Des Moines, the only through sleeping car line to the Chicago Rochester, Minn. and the WESTERN are good via Rochester, with stop-over within limit without extra charge.

25		8-3		52-1		Mts		TABLE 1 Continued		2-51		4-7		26	
Motor	DAILY	DAILY	DAILY	AM	PM	AM	PM	Central Time	Central Time	AM	PM	DAILY	DAILY	EX	SUN
+	7 45	12 45	7 30	322 Lv.	Ar	Des Moines (Un. Sta.)	Ar	Central Time	Central Time	6 40	11 25	6 40	9 00	PM	Motor
+	8 07			330 Lv.	Lv	Orillis	Lv	Des Moines (Un. Sta.)	Ar				7 34	PM	Motor
+	8 12			337 Lv.	Lv	Commaning	Lv	Orillis	Lv				7 29	PM	Motor
+	8 16			340 Lv.	Lv	Charrville	Lv	Commaning	Lv				7 20	PM	Motor
+	8 24			342 Lv.	Lv	Marionville	Lv	Charrville	Lv				7 15	PM	Motor
+	8 27			343 Lv.	Lv	Marionville	Lv	Charrville	Lv				7 11	PM	Motor
+	8 31			350 Lv.	Lv	Conger	Lv	Marionville	Lv				7 06	PM	Motor
+	8 41			356 Lv.	Lv	Hanley	Lv	Conger	Lv				6 56	PM	Motor
+	8 54			363 Lv.	Lv	Barney	Lv	Hanley	Lv				6 45	PM	Motor
+	9 04			368 Lv.	Lv	Monette	Lv	Barney	Lv				6 33	PM	Motor
+	9 15			372 Lv.	Lv	Monette	Lv	Monette	Lv				6 25	PM	Motor
+	9 22			376 Lv.	Lv	Tainage	Lv	Monette	Lv				6 16	PM	Motor
+	9 30			378 Lv.	Lv	Shepard	Lv	Tainage	Lv				6 06	PM	Motor
+	9 40			384 Lv.	Lv	Shannon City	Lv	Shepard	Lv				5 55	PM	Motor
+	9 58			396 Lv.	Lv	Benton	Lv	Shannon City	Lv				5 47	PM	Motor
+	10 00			404 Lv.	Lv	Maloy	Lv	Benton	Lv				5 36	PM	Motor
+	10 22			407 Lv.	Lv	Blockton	Lv	Maloy	Lv				5 22	PM	Motor
+	10 39			413 Lv.	Lv	Athelstan	Lv	Blockton	Lv				5 08	PM	Motor
+	10 48			418 Lv.	Lv	Sheridan	Lv	Athelstan	Lv				5 00	PM	Motor
+	10 58			423 Lv.	Lv	Farnell	Lv	Sheridan	Lv				4 41	PM	Motor
+	11 08			436 Lv.	Lv	Ravenwood	Lv	Farnell	Lv				4 31	PM	Motor
+	11 20			441 Lv.	Lv	Conception	Lv	Ravenwood	Lv				4 21	PM	Motor
+	11 38			449 Lv.	Lv	Gulford	Lv	Conception	Lv				4 09	PM	Motor
+	11 59			453 Lv.	Lv	Cawood	Lv	Gulford	Lv				3 53	PM	Motor
+	12 08			457 Lv.	Lv	Wyeat	Lv	Cawood	Lv				3 43	PM	Motor
+	12 28			460 Lv.	Lv	Savannah	Lv	Wyeat	Lv				3 36	PM	Motor
+	12 52			471 Lv.	Lv	Dean	Lv	Savannah	Lv				3 22	PM	Motor
+	1 00			479 Lv.	Lv	St. Joseph (3d St.)	Lv	Dean	Lv				3 12	PM	Motor
+	1 08			480 Lv.	Lv	St. Joseph (Un. Sta.)	Lv	St. Joseph (3d St.)	Lv				3 02	PM	Motor
+	1 20			488 Lv.	Lv	St. Joseph (Un. Sta.)	Lv	St. Joseph (Un. Sta.)	Lv				2 47	PM	Motor
+	1 28			490 Lv.	Lv	Willow Brook	Lv	St. Joseph (Un. Sta.)	Lv				2 40	PM	Motor
+	1 52			492 Lv.	Lv	Faucett	Lv	Willow Brook	Lv				2 25	PM	Motor
+	1 58			498 Lv.	Lv	Dearborn	Lv	Faucett	Lv				2 15	PM	Motor
+	2 08			500 Lv.	Lv	New Market	Lv	Dearborn	Lv				2 07	PM	Motor
+	2 18			504 Lv.	Lv	Woodruff	Lv	New Market	Lv				2 00	PM	Motor
+	2 28			508 Lv.	Lv	West Platte	Lv	Woodruff	Lv				1 50	PM	Motor
+	2 38			511 Lv.	Lv	Beverly	Lv	West Platte	Lv				1 45	PM	Motor
+	2 48			516 Lv.	Lv	Leavenworth (C. G. W. Sta.)	Lv	Beverly	Lv				1 38	PM	Motor
+	2 58			539 Ar.	Lv	Kansas City, Kans.	Lv	Leavenworth (C. G. W. Sta.)	Lv				1 30	PM	Motor
+	3 08			543 Ar.	Lv	Kansas City, Mo. (Un. Sta.)	Lv	Kansas City, Kans.	Lv				1 25	PM	Motor
+	3 55				PM								12 30	PM	Motor

Light face figures show time from 12.01 midnight to 12.00 noon. Dark face figures show time from 12.01 noon to 12.00 midnight. Figures opposite junction points refer to numbers of time tables showing diverging trains.

All trains except Nos. 1, 2, 3 and 4 on Iowa Division (Oelwein to Kansas City) will stop at any point to discharge passengers holding tickets routed through St. Paul, Minneapolis, Chicago, Kansas City or Omaha.

Equipment of Through Trains (Table 1)

(All trains not mentioned below carry coaches only, except that schedules and equipment of through trains operated between above points and points on other divisions will be found in tables applying between such points.)

(SOUTHBOUND)

No. 8-3—MILL CITIES LIMITED—DAILY
Sleeping Car (12-Sec. D.-R.) Minneapolis to Kansas City
Sleeping Car (16-Sec. Standard) (S) Des Moines to Kansas City
Cafe-Parlor-Observation Car. Minneapolis to Des Moines
Dining Service. Minneapolis to Oelwein
Coaches. Minneapolis to Kansas City

No. 52-1—TRI-STATE LIMITED—DAILY

Sleeping Car (12-Sec. D.-R.) (S) Rochester to Kansas City
Sleeping Car (12-Sec. D.-R.) (S) Minneapolis to Des Moines
Sleeping Car (16-Sec. Standard) (S) Minneapolis to Kansas City
Cafe-Parlor-Observation Car. Minneapolis to Kansas City
Dining Service. Des Moines to Kansas City
Coaches. Minneapolis to Kansas City

(NORTHBOUND)

No. 2-51—MILL CITIES LIMITED—DAILY
Sleeping Car (12-Sec. D.-R.) (S) Des Moines to Minneapolis
Sleeping Car (16-Sec. Standard) (S) San Antonio to Minneapolis via M.-K.-T. via Ft. Worth, Kansas City and C. G. W. (see page 23)
Sleeping Car (12-Sec. D.-R.) (S) Kansas City to Rochester
Sleeping Car (10-Sec. D.-R. Compl.) Los Angeles to Minneapolis, via A. T. & S. F. "Grand Canyon Limited" to Kansas City, thence C. G. W. (see page 23)

No. 4-7—TRI-STATE LIMITED—DAILY

Sleeping Car (S) (12 Sec. D.-R.) Kansas City to Minneapolis
Sleeping Car (16-Sec. Standard) (S) Kansas City to Des Moines
Cafe-Parlor Car, Dining Service. Des Moines to Minneapolis
Coaches. Kansas City to Minneapolis
Cafe-Parlor-Observation Car. Kansas City to Minneapolis
Dining Service, Coaches Kansas City to Minneapolis

FOR EXPLANATION OF REFERENCE MARKS, SEE PAGE 23



Chicago, Dubuque— Rochester, St. Paul, Minneapolis

Minneapolis, St. Paul—Rochester, Osage Chicago—Kansas City

Read Down (For complete local schedules Osage and St. Paul see Tables 1 and 3) Read Up

5 DAILY		1 DAILY		TABLE 2		2 DAILY		4 DAILY	
PM	AM	PM	AM	MILES	CENTRAL TIME	MILES	AM	PM	PM
11 30	8 00	8 00	8 55	0	Chicago, Ar	0	AM	7 30	
11 55	8 25	8 25	9 00	12	Forest Park, Lv	12	AM	7 04	
				13	Maywood, Lv	13	AM	7 00	
				17	Bellewood, Lv	17	AM	6 52	
				17	Elmhurst, Lv	17	AM		
				19	Villa Park, Lv	19	AM		
				21	Lombard, Lv	21	AM		
				23	North Glen Ellyn, Lv	23	AM		
				26	Gretna, Lv	26	AM		
				31	Ingalton, Lv	31	AM		
				36	St. Charles, Lv	36	AM	6 18	
				37	Fox River, Lv	37	AM		
				41	Wasco, Lv	41	AM	6 05	
				46	Lily Lake, Lv	46	AM	5 58	
				49	Virril, Lv	49	AM	5 52	
				51	Richardson, Lv	51	AM	5 47	
				57	Sycamore, Lv	57	AM	5 37	
				97	DeKalb, Lv	97	AM		
				107	Freepoint, Lv	107	AM		
				114	Bolton, Lv	114	AM		
				120	Peel City, Lv	120	AM	3 45	
				125	Kent, Lv	125	AM	3 36	
				131	Stockton, Lv	131	AM	3 28	
				139	Woodbine, Lv	139	AM	3 19	
				143	Elizabeth, Lv	143	AM	3 05	
				147	North Hanover, Lv	147	AM	2 45	
					Hanover, Lv		AM	2 35	
					Hanover, Lv		AM	2 30	
					Rodden, Lv		AM	2 37	
					Winston, Lv		AM		
					Rice, Lv		AM		
					Aiken, Lv		AM	2 25	
					Galena Junct., Lv		AM	2 21	
					Bubuque, Lv		AM	2 19	
					Durango, Lv		AM	1 59	
					Budd, Lv		AM	1 59	
					Graf, Lv		AM	1 35	
					Kidder, Lv		AM	1 29	
					Farley, Lv		AM	1 19	
					Dyersville, Lv		AM	1 07	
					Petersburg, Lv		AM	12 48	
					Almora, Lv		AM	12 38	
					Onelda, Lv		AM	12 32	
					Manchester, Lv		AM	12 25	
					Manchester, Lv		AM	12 00	
					Thorpe, Lv		AM	11 25	
					Dundee, Lv		AM	12 16	
					Lamont, Lv		AM	12 08	
					Aurora, Lv		AM	11 59	
					Stanley, Lv		AM	11 50	
					Oelwein 1, Lv		AM	11 41	
					Oelwein 6, Lv		AM	11 30	
					Westgate, Lv		AM	2 15	
					Summer 8, Lv		AM	2 10	
					Fredericksburg, Lv		AM	1 55	
					Boyd, Lv		AM	1 43	
					New Hampton, Lv		AM	1 26	
					Devon, Lv		AM	1 10	
					Alta Vista, Lv		AM	1 10	
					Elma, Lv		AM	12 52	
					Acme 1, Lv		AM	12 46	
					Riceville, Lv		AM	12 30	
					McIntire 1, 3, Lv		AM	12 20	
					Rochester 3, Lv		AM	10 10	

LOW FARES TO California OR THE SUNNY SOUTH

Ask Any Great Western Agent or Representative

At Your Service

You can depend upon the "Great Western" to meet your transportation needs, when you travel and when you ship. A dependable service that is building for shippers a wider market for their products, because it combines speed, safety and on-time performance with an intelligent understanding of individual requirements.

Travel and Ship via Great Western

408 Mixed EX SUN AM	12 30 PM
4 15 AM	
4 30 AM	
4 40 AM	
4 55 AM	
5 15 AM	
AM	

Read Up

14-44 DAILY		42 DAILY		TABLE 3		41 DAILY		43-17 DAILY	
AM	PM	AM	PM	MILES	CENTRAL TIME	MILES	AM	PM	PM
8 20	5 25	5 25	6 00	0	Minneapolis, Ar	0	PM	8 05	
8 55	6 00	6 00	6 15	11	St. Paul, Ar	11	PM	7 25	
9 10	6 10	6 10	6 15	15	So. St. Paul, Lv	15	PM	7 15	
9 17	6 10	6 10	6 15	16	Inver Grove, Lv	16	PM		
9 30	6 10	6 10	6 15	18	Rich Valley, Lv	18	PM		
9 34	6 10	6 10	6 15	20	Coates, Lv	20	PM		
9 41	6 10	6 10	6 15	29	Empire, Lv	29	PM		
9 50	6 10	6 10	6 15	33	Hampton, Lv	33	PM		
10 10	6 10	6 10	6 15	37	Hampton 1, Lv	37	PM		
				43	Hampton 1, Lv	43	PM	6 30	
				50	Cannon Falls, Lv	50	PM		
				53	Mineral Springs, Lv	53	PM		
				59	Wells, Lv	59	PM		
				71	West Red Wing, Lv	71	PM		
				71	Wells, Lv	71	PM		
				8 05	Red Wing, Lv	8 05	PM	5 30	
				8 26	Trout Brook, Lv	8 26	PM		
				8 47	Hay Creek, Lv	8 47	PM	5 30	
				8 47	Coates, Lv	8 47	PM		
				8 53	Goodhue, Lv	8 53	PM		
				9 06	White Willow, Lv	9 06	PM		
				9 14	Zumbrota, Lv	9 14	PM		
				9 24	Lena, Lv	9 24	PM		
				10 5	Pue Island, Lv	10 5	PM		
				9 38	Oronoco, Lv	9 38	PM		
				9 55	Douglas, Lv	9 55	PM		
				10 12	Rochester 9, Lv	10 12	PM	4 00	
				10 28	Rochester 9, Lv	10 28	PM		
				10 34	Stimpson 9, Lv	10 34	PM		
				10 45	Judge, Lv	10 45	PM		
				10 57	Stewartville, Lv	10 57	PM		
				11 17	Racine, Lv	11 17	PM		
				11 28	Spring Valley, Lv	11 28	PM		
				11 44	Osander, Lv	11 44	PM		
				12 01	Leroy, Minn, Lv	12 01	PM		
				12 01	McIntire, Ia, 2, Lv	12 01	PM		
				171	McIntire, Ia, Ar	171	PM	12 45	
				176	David, Lv	176	PM	10 55	
				179	Little Cedar, Lv	179	PM	10 35	
				183	Buckingham, Lv	183	PM	10 15	
				187	Osage, Lv	187	PM	10 00	
				12 20	McIntire, Ar	12 20	PM		
				4 20	Dubuque 2, Lv	4 20	PM		
				8 55	Chicago, Lv	8 55	PM	8 00	
				12 20	McIntire, Ar	12 20	PM		
				7 20	Des Moines 1, Lv	7 20	PM	5 05	
				11 40	St. Joseph 1, Lv	11 40	PM	11 35	
				1 40	Kansas City, Lv	1 40	PM	5 30	

Bargain Excursions to Many Places
Travel by train... it costs less... and it's much more comfortable. Zero days are June steam heat season. Great Western coach, parlor car or Pullman. Plenty of room to stroll about. Plenty of wraps and luggage and as you ride, you can dine sumptuously at very moderate cost. Trip in comfort with your nearest Great Western agent. The chances are even that he can save you money no matter where you want to go.

Equipment of Through Trains (Tables 2 and 3)

All trains not mentioned below carry coaches only, except that schedules and equipment of through trains operated between above points and points on other divisions will be found in tables applying between such points.

Nos. 41 and 42—THE BLUE BIRD—DAILY

Between McIntire and Minneapolis
Parlor Car..... between Rochester and Minneapolis
Coaches..... between McIntire and Minneapolis
Sleeping Car (12-Sec. D-R.)..... between Rochester and Chicago
Sleeping Car (12-Sec. D-R.)..... between Rochester and Kansas City

Nos. 43-17 and 14-44—THE RED BIRD—DAILY

Between Rochester and Minneapolis
Parlor-Observation Car..... between Rochester and Minneapolis
Cafe-Parlor Car..... between Randolph and Minneapolis
Coaches..... between Rochester and Minneapolis

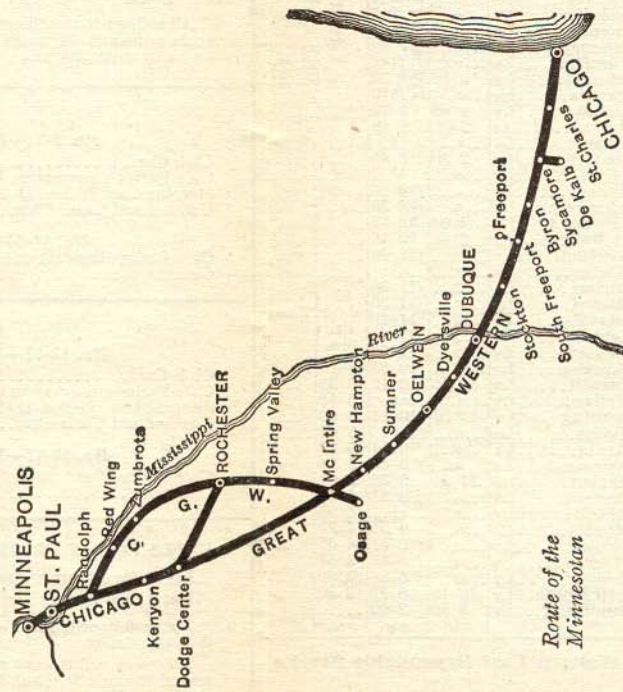
Runs to Des Moines and Clarion see tables 1, 5 and 6.

From Des Moines; see table 5.

TABLE 2 Continued		2	DAILY
CARIBBEAN CRUISES	Lv. McIntire 1, 3..	Ar	12 20
	Lv. Bailey	Lv	r.
	Lv. Thopl.	Lv	r.
	Lv. Elkton	Lv	r.
	Lv. Renova	Lv	r.
	Lv. Hayfield 1, 4..	Lv	11 20
	Lv. Hayfield 1, 4..	Lv	11 20
	Lv. Hayfield 1, 4..	Lv	11 20
	Lv. Hayfield 1, 4..	Lv	11 20
	Lv. Hayfield 1, 4..	Lv	11 20
All-expense cruises to Carib-bean ports every Wednesday and Saturday during February and March	Lv. Dodge Center	Lv	10 52
	Lv. West Concord	Lv	r.
	Lv. Skyburg	Lv	r.
	Lv. Kenyon	Lv	r.
	Lv. Nerstrand	Lv	r.
	Lv. Dennison	Lv	r.
	Lv. Stanton	Lv	r.
	Lv. Randolph 1, 3, 7	Lv	r.
	Lv. Hampton	Lv	r.
	Lv. Empire	Lv	r.
AM	Lv. Coates	Lv	r.
	Lv. Rich. Galle	Lv	r.
	Lv. Inver Grove	Lv	r.
	Lv. South St. Paul	Lv	9 05
	Lv. St. Paul	Lv	9 55
	Lv. Minneapolis	Lv	8 20
	Ar.	Lv	r.
	Ar.	Lv	r.
	Ar.	Lv	r.
	Ar.	Lv	r.

On Time Service

Great Western passenger trains arrived at destination on the dot 97 times in every hundred trips! A wonderful record in operating efficiency—and a sure sign of fast reliable motive power, good cars and a sound smooth track. To travel smoothly, swiftly and on time use the Great Western.



NORTHBOUND

No. 1—THE MINNESOTAN—DAILY

Club Car (Grill Service)..... Chicago to Minneapolis
 Sleeping Car (12-Sec. D.-R.)..... Chicago to Minneapolis
 Sleeping Car (12-Sec. D.-R.) (4)..... Chicago to Rochester
 Coaches and Chair Car..... Chicago to Minneapolis
 Coaches..... McIntire to Rochester

SOUTHBOUND

No. 2—THE MINNESOTAN—DAILY

Club Car (Grill Service)..... Minneapolis to Chicago
 Sleeping Car (12-Sec. D.-R.)..... Minneapolis to Chicago
 Sleeping Car (12-Sec. D.-R.) (4)..... Rochester to Chicago
 Coaches and Chair Car..... Minneapolis to Chicago
 Coaches..... Rochester to McIntire

EXPLANATION OF REFERENCE MARKS SHOWN ON PAGE 23

Light face figures show time from 12:01 midnight to 12:00 noon.
Dark face figures show time from 12:01 noon to 12:00 midnight.

Figures opposite junction points refer to numbers of time tables showing diverging trains. All trains except Nos. 1, 2, 3 and 4 on Iowa Division (stations between Oswein and Kansas City) will stop at any point to discharge passengers holding tickets routed through Chicago, St. Paul or Minneapolis.

TWIN TRAINS

Between the Twin Cities and Rochester

Southbound—Read Down		Schedules—Daily		Northbound—Read Up	
THE Red Bird	THE Blue Bird	THE Blue Bird	THE Red Bird	THE Blue Bird	THE Red Bird
8.20 a. m.	5.25 p. m.	Lv. Minneapolis	Ar	12.35 p. m.	8.05 p. m.
8.55 a. m.	6.00 p. m.	Lv. St. Paul	Ar	12.05 p. m.	7.25 p. m.
10.10 a. m.	7.10 p. m.	Lv. Randolph	Ar	11.08 a. m.	6.30 p. m.
	7.22 p. m.	Lv. Cannon Falls	Ar	10.57 a. m.	
10.57 a. m.		Lv. West Red Wing	Ar		5.30 p. m.
	8.05 p. m.	Lv. Red Wing	Ar	10.10 a. m.	
11.29 a. m.	8.47 p. m.	Lv. Goodhue	Ar	9.34 a. m.	5.02 p. m.
	9.06 p. m.	Lv. Zumbrota	Ar	9.16 a. m.	
	9.24 p. m.	Lv. Pine Island	Ar	9.00 a. m.	
12.30 p. m.	9.55 p. m.	Lv. Rochester	Lv	8.30 a. m.	4.00 p. m.

The Blue Bird

Parlor—Observation Car— Comfortable roomy Coaches.

The Red Bird

Observation lounge car—Dining Service—Comfortable Coaches.

Travel via Great Western

Twin trains daily—morning and afternoon—the smoothest, fastest and most comfortable transportation between Rochester and the Twin Cities—and every assurance of on time arrival

The Spirit of Great Western Service

The Spirit of Great Western Service recognizes no half-way performance. It strives for the utmost in service, efficiency and courtesy. It dominates Great Western employees, and creates in them a desire to please our patrons by serving them cheerfully in the way they wish to be served. Notice how this spirit is reflected in the way the Agent answers your questions—in the way the Conductor collects

your ticket—in the way the dining car attendant serves your meals—in the way the Pullman Porter anticipates your comforts—and in the careful way your Engineer starts and stops your train.

The Spirit of Great Western Service is a tangible part of the Chicago Great Western Railroad. It is dedicated to perfection in travel comfort for you.



Minneapolis, St. Paul—Fort Dodge, Omaha

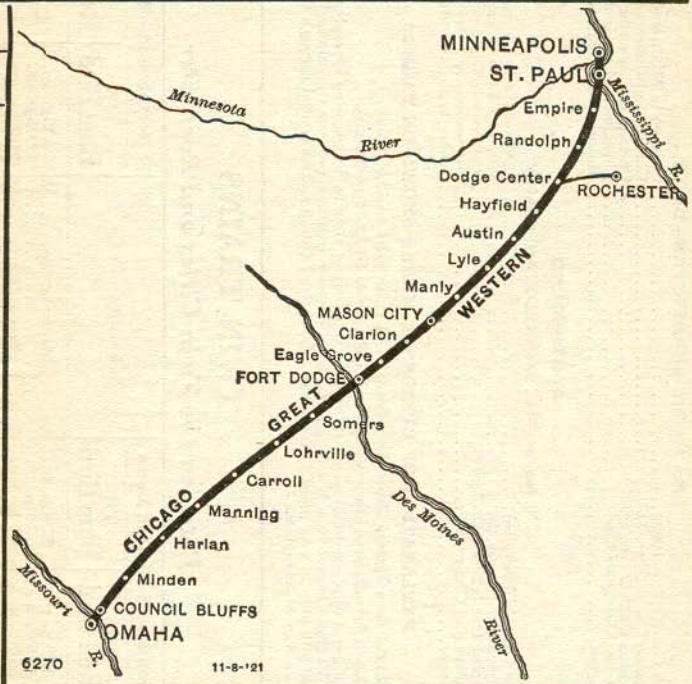
Read Down

Read Up

	14-15 DAILY		2-11 DAILY		Miles	TABLE 4		12-51 DAILY		16-17 DAILY	
	AM	PM	AM	PM		AM	PM	AM	PM	AM	PM
See Table 1 for Additional Trains between Minneapolis, St. Paul and Hayfield	8 20	8 20	0		Lv. Minneapolis	Ar	8 45	8 05			
	8 55	8 55	11		Lv. St. Paul	Ar	8 05	7 25			
	9 10	9 05	15		Lv. So. St. Paul	Ar	7 55	7 15			
	9 17	..	18		Lv. Inver Grove	Lv					
	9 30	..	26		Lv. Rich Valley	Lv					
	9 34	..	29		Lv. Coates	Lv					
	9 41	..	33		Lv. Empire	Lv					
	9 50	..	37		Lv. Hampton	Lv					
	10 00	..	43		Ar. Randolph 3, 7	Ar		6 30			
	10 00	..	43		Lv. Randolph	Ar		6 30			
	10 10	..	47		Lv. Stanton	Lv		6 10			
	10 20	..	52		Lv. Dennison	Lv		6 00			
	10 30	..	57		Lv. Nerstrand	Lv		5 50			
	10 40	..	63		Lv. Kenyon	Lv		5 40			
	10 49	..	68		Lv. Skyburg	Lv		5 27			
10 59	..	73		Lv. West Concord	Lv		5 15				
11 09	..	77		Lv. Eden 11	Lv		5 05				
11 145	..	84		Ar. Mantorville	Lv		14 20				
11 20	..	84		Lv. Mantorville	Ar		15 45				
9 45	8 55	..		Lv. Rochester	Ar		47 30				
11 20	10 52	82		Lv. Dodge Center	Lv	6 17	4 58				
11 30	..	86		Lv. Viasaty	Lv		4 50				
11 40	11 10	91		Ar. Hayfield 1	Lv	6 00	4 40				
11 45	11 25	91		Lv. Hayfield	Ar	5 50	4 40				
11 55	..	96		Lv. Waltham	Lv	..	4 27				
12 01	..	101		Lv. Mayville	Lv	..	4 18				
12 15	11 58	108		Lv. Austin	Lv	5 20	4 02				
12 22	..	112		Lv. Varco	Lv				
12 34	12 14	120		Lv. Lyle	Lv	5 01	3 40				
12 44	..	125		Lv. Meltonville	Lv	..	328				
12 55	..	132		Lv. Bolan	Lv	..	317				
1 07	12 44	140		Lv. Manly	Lv	4 30	3 05				
..	..	145		Lv. Freeman	Lv				
1 30	1 08	149		Lv. Mason City	Lv	4 10	2 45				
1 35	..	151		Lv. Clear Lake Junction	Lv	..	231				
11 45	10 35	..		Lv. Clear Lake	Lv	10 35	1 25				
1 46	..	156		Lv. Burchinal	Lv	..	222				
2 04	..	163		Lv. Swaledale	Lv	..	212				
2 16	..	167		Lv. Thornton	Lv	..	2 04				
2 22	..	173		Lv. Meservey	Lv	..	1 52				
2 22	..	177		Lv. Palsville	Lv	..	142				
2 25	2 02	182		Lv. Belmont	Lv	3 10	1 32				
2 25	2 28	187		Lv. Cornelia	Lv	..	120				
2 25	2 28	192		Ar. Clarion 6	Ar	2 50	1 10				
2 25	2 28	192		Lv. Clarion	Ar	2 50	1 10				
3 16	2 50	197		Lv. Florence	Lv				
..	..	202		Lv. Eagle Grove	Lv	2 30	12 49				
..	..	207		Lv. Nuel	Lv				
..	..	211		Lv. Vincent	Lv	..	12 36				
..	..	215		Lv. Industry	Lv	..	12 30				
3 58	3 33	221		Ar. Fort Dodge 10	Ar	2 00	12 16				
3 58	3 33	221		Lv. Fort Dodge	Ar	2 00	12 16				
4 18	..	228		Lv. Moorland	Lv	..	11 50				
..	..	232		Lv. Roelyn	Lv				
4 32	..	237		Lv. Somers	Lv	..	11 36				
4 39	..	241		Lv. Rinard	Lv	..	11 30				
4 49	4 18	247		Lv. Lohrville	Lv	..	11 20				
..	..	251		Lv. Wightman	Lv	..	11 14				
5 04	..	256		Lv. Lanesboro	Lv	..	11 05				
5 14	..	262		Lv. Lidderdale	Lv	..	10 55				
5 32	4 55	269		Lv. Carroll	Lv	12 35	10 42	16 35			
5 47	..	277		Lv. Halbur	Lv	6 18			
6 03	5 23	286		Lv. Manning	Lv	12 07	10 14	6 03			
6 12	..	291		Lv. Botna	Lv	5 42			
6 22	..	297		Lv. Irwin	Lv	..	9 54	5 29			
6 44	..	303		Lv. Kirkman	Lv	..	9 45	5 14			
6 59	6 44	309		Lv. Harlan	Lv	11 31	9 36	5 00			
9 21	6 59	..		Lv. Tennant	Lv	..	9 21	4 42			
9 32	..	324		Lv. Magill	Lv	4 30			
9 42	7 17	..		Lv. Minden	Lv	..	9 05	4 22			
9 57	7 31	..		Lv. Bentley	Lv	..	8 52	4 07			
10 07	7 39	..		Lv. McClelland	Lv	..	8 45	3 57			
10 17	7 48	..		Lv. Gilliat	Lv	..	8 36	3 46			
1035	8 04	7 08	353	Ar. Council Bluffs	Lv	10 15	8 23	13 30			
8 40	7 40	357		Ar. Omaha	Lv	9 50	8 00				

Read, dine or rest as you ride
Travel by Train
... rain or shine, water or summer, the most comfortable and dependable way to travel is by train.
For speed, comfort and punctuality travel by Great Western trains

Great Western trains now leave from Burlington Station, 10th and Mason Sts. in Omaha. Two fine trains daily over the shortest, smoothest way between Omaha, St. Paul and Minneapolis.



Equipment of Through Trains (Table 4)

All trains not mentioned below carry coaches only, except that schedules and equipment of through trains operated between above points and points on other divisions will be found in tables applying between such points.

SOUTHBOUND

No. 2-11—NEBRASKA LIMITED—DAILY

- Club Car..... Minneapolis to Hayfield
- Cafe-Parlor-Observation Car..... Ft. Dodge to Omaha
- Sleeping Car (12-Sec. D.-R.)..... Minneapolis to Omaha
- Coaches and Chair Cars..... Minneapolis to Omaha

No. 14-15—OMAHA EXPRESS—DAILY

- Cafe-Parlor-Observation Car..... Minneapolis to Omaha
- Coaches..... Minneapolis to Omaha

NORTHBOUND

No. 12-51—TWIN CITY LIMITED—DAILY

- Club Car..... Hayfield to Minneapolis
- Cafe-Parlor-Observation Car..... Omaha to Ft. Dodge
- Sleeping Car (12-Sec. D.-R.)..... Omaha to Minneapolis
- Coaches and Chair Cars..... Omaha to Minneapolis

No. 16-17—TWIN CITY EXPRESS—DAILY

- Cafe-Parlor-Observation Car..... Omaha to Minneapolis
- Coaches..... Omaha to Minneapolis

EXPLANATION OF REFERENCE MARKS SHOWN ON PAGE 23

Light face figures show time from 12.01 midnight to 12.00 noon.
Dark face figures show time from 12.01 noon to 12.00 midnight.

Figures opposite junction points refer to numbers of time tables showing diverging trains.

All trains will stop at any point to discharge passengers holding tickets routed through St. Paul, Minneapolis or Omaha.

Route Your Freight via Great Western Fast Dependable Service



Chicago, Dubuque—to Fort Dodge, Omaha

For complete local schedules Chicago to Oelwein, see Table 2.

Read Down				Read Up			
1	5-23	TABLE 6		24-2	4		
DAILY		MILES			DAILY		
8 00 PM	*11 30 PM	0	Lv. Chicago	Ar	* 8 55 PM	7 30 PM	
8 25	11 55	10	Lv. Forest Park	Ar	8 30	7 04	
9 03	12 40	36	Lv. St. Charles	Ar	m.,	6 18	
9 37	1 27	57	Lv. Sycamore	Ar	7 22	5 37	
12 26	5 08	172	Lv. Dubuque	Ar	4 20	1 59	
2 35	* 7 35	246	Ar. Oelwein 1, 2	Lv	* 2 15	11 30	
	† 7 50	246	Lv. Oelwein	Ar	† 7 30		
	8 11	255	Lv. Oran	Ar	† 7 06		
	8 29	262	Lv. Readlyn	Ar	6 50		
	9 00	275	Lv. Waverly 8	Ar	6 20		
	9 15	282	Lv. Shell Rock	Ar	5 55		
	9 32	288	Lv. Clarksville	Ar	5 37		
	9 49	295	Lv. Allison	Ar	5 22		
	10 00	301	Lv. Bristol	Ar	5 10		
	10 15	305	Lv. Dumont	Ar	5 00		
	10 30	312	Lv. Hansell	Ar	4 46		
	10 47	317	Lv. Hampton, Iowa	Ar	4 35		
	11 07	326	Lv. Coulter	Ar	4 09		
	11 28	335	Lv. Rowan	Ar	3 52		
	† 11 36	338	Lv. Solberg	Ar	3 42		
	† 11 50	345	Lv. Clarion 4	Lv	† 3 30		
		345	Lv. Clarion	Ar			
		350	Lv. Florence	Lv			
		354	Lv. Eagle Grove	Lv			
		359	Lv. Nuel	Lv			
		363	Lv. Vincent	Lv			
		367	Lv. Industry	Lv			
		373	Lv. Fort Dodge	Lv			
		380	Lv. Moorland	Lv			
		384	Lv. Roelyn	Lv			
		389	Lv. Somers	Lv			
		393	Lv. Rinard	Lv			
		399	Lv. Lohrville	Lv			
		403	Lv. Wightman	Lv			
		408	Lv. Lanesboro	Lv			
		414	Lv. Lidderdale	Lv			
		421	Lv. Carroll	Lv			
		429	Lv. Halbur	Lv			
		438	Lv. Manning	Lv			
		443	Lv. Botna	Lv			
		449	Lv. Irwin	Lv			
		455	Lv. Kirkman	Lv			
		461	Lv. Harlan	Lv			
		469	Lv. Tennant	Lv			
		476	Lv. Magill	Lv			
		480	Lv. Minden	Lv			
		487	Lv. Bentley	Lv			
		492	Lv. McClelland	Lv			
		497	Lv. Gilliat	Lv			
		505	Ar. Council Bluffs	Lv			
		509	Ar. Omaha	Lv			

Equipment of Through Trains

(Table 6)

All trains not mentioned below carry coaches only, except that schedules and equipment of through trains operated between above points and points on other divisions will be found in tables applying between such points.

WESTBOUND

No. 5-23—WESTERN EXPRESS

Sleeping Car (12-Sec. D.-R. Compt.) (s) *Chicago to Oelwein
Coaches..... *Chicago to Oelwein
Coaches..... †Oelwein to Clarion

EASTBOUND

No. 24-2—EASTERN EXPRESS

Coaches..... †Clarion to Oelwein
Sleeping Car (12-Sec. D.-R. Compt.) *Oelwein to Chicago
Club Car (Grill Service)..... *Oelwein to Chicago
Coaches..... *Oelwein to Chicago

EXPLANATION OF REFERENCE MARKS SHOWN ON PAGE 23

Light face figures show time from 12.01 midnight to 12.00 noon.

Dark face figures show time from 12.01 noon to 12.00 midnight.

Figures opposite junction points refer to numbers of time tables showing diverging trains.

All trains will stop at any point to discharge passengers holding tickets routed through Chicago and Omaha.

Low Round Trip Fares

In effect every day
via Chicago Great Western R. R. to
Excelsior Springs, Mo.

One of the world's most famous
Mineral Springs resorts

More than 200,000 people from all parts of the world come here each year in search of Rest, Recreation and Health.

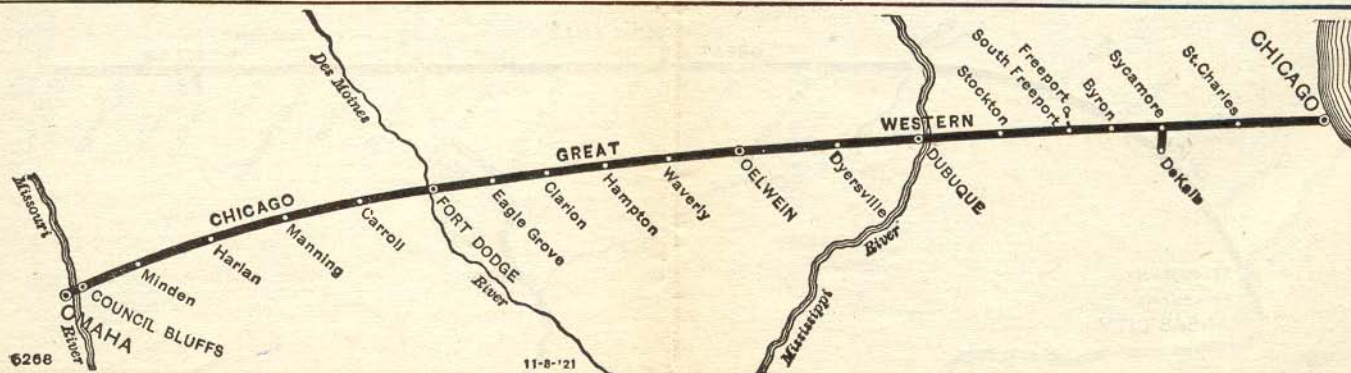
Twenty health-giving springs are now located within a radius of a half mile of the city. This large number of springs and the many varieties of waters which they include, make Excelsior Springs without question, the Health Center of the Middle West.

For Descriptive Literature and further information ask any Great Western Agent or Representative

PARMELEE COMPANY

Auto-Transfer at CHICAGO
From the GRAND CENTRAL STATION

Uniformed Parmelee transfer agents pass through the trains of the C. G. W. R. R. on approaching Chicago. They will arrange for transfer of passengers and baggage to principal hotels and other railroad stations, and for the delivery of baggage at hotels and residences in any part of the city.





Iowa and Minnesota Branch Lines



Minneapolis, St. Paul—Northfield, Faribault, Mankato

Read Down		401 MIXED EX. SUN.	Miles	TABLE 7	402-17 MIXED EX. SUN.	Read Up		
		AM		<i>Central Time</i>	PM			
CARIBBEAN CRUISES	0	Lv. Minneapolis	Ar	* 8 05	GREAT WESTERN PLAYING CARDS on sale at all stations 45c per deck on trains 50c per deck <i>Ask your nearest ticket agent or address E. W. IRELAND, General Passenger Agent C.G.W.R.R. 122 S. Michigan Blvd., Chicago, Ill.</i>			
	11	Lv. St. Paul	Ar	7 25				
	15	Lv. So. St. Paul	Ar	7 15				
	18	Lv. Inver Grove	Lv					
	26	Lv See Rich Valley	Lv					
	29	Lv also Coates	Lv					
	33	Lv Table Empire	Lv					
	37	Lv 1 Hampton	Lv					
	43	Ar Randolph 1, 3	Lv	* 6 30				
	0	Lv Randolph 1, 3	Ar	† 4 00				
	† 6 00	3	Lv Wallace	Lv				† 3 50
	† 6 10	7	Lv Waterford	Lv				† 3 40
	† 6 23	9	Ar Northfield	Lv				3 22
	7 00	9	Lv Northfield	Ar				3 22
	7 00	12	Lv Dundas	Lv				3 05
	7 25	16	Lv Bridgewater	Lv				† 2 40
	7 45	23	Lv Faribault	Lv				1 50
9 00	32	Lv Warsaw	Lv	† 12 20				
10 20	35	Lv Morristown	Lv	11 59				
10 50	41	Lv Waterville	Lv	11 40				
11 40	47	Lv Elysian	Lv	10 55				
12 10	50	Lv Greenland	Lv	† 10 42				
† 12 25	54	Lv Madison Lake	Lv	10 30				
12 40	61	Lv Waters	Lv	† 10 05				
† 1 10	66	Lv Benning	Lv	9 45				
1 45	70	Ar Mankato	Lv	† 9 30				
† 2 30				AM				

Fort Dodge—Lehigh

Read Down		98 MIXED EX. SUN.	Miles	TABLE 10	99 MIXED EX. SUN.	Read Up	
		AM		<i>Central Time</i>	PM		
	† 8 30	0	Lv Fort Dodge 4, 6	Ar	† 12 10		
			(Round House)				
	8 50	4	Lv Gypsum	Lv	11 50		
	9 10	8	Lv Evanston	Lv	11 30		
	† 9 40	15	Ar Lehigh	Lv	† 11 00		
					AM		

Mantorville and Eden

Mantorville Transportation Company

Read Down		Miles	TABLE 11	Read Up		
			<i>Central Time</i>	AM	PM	
	† 10 20	† 4 20	0 Lv Mantorville	Ar	† 11 45	† 5 45
	10 45	4 40	4 Lv Wasioja	Lv	11 25	5 30
	† 11 00	† 4 55	7 Ar Eden 1	Lv	† 11 10	† 5 10
				AM	PM	

EXPLANATION OF REFERENCE MARKS SHOWN ON PAGE 23

Light face figures show time from 12.01 midnight to 12.00 noon;
Dark face figures show time from 12.01 noon to 12.00 midnight.

Figures opposite junction points refer to numbers of time tables showing diverging trains.

Waverly—Sumner

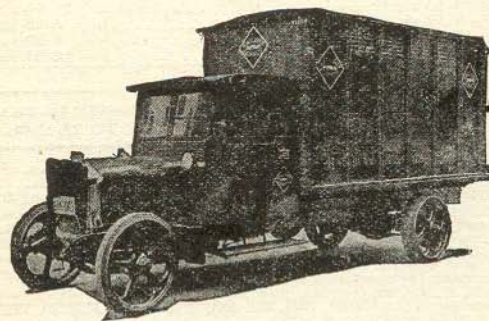
Read Down		87 MIXED EX. SUN.	Miles	TABLE 8	88 MIXED EX. SUN.	Read Up	
		AM		<i>Central Time</i>	PM		
	† 7 00		Lv Waterloo (W. C. F. & N.)	Ar	* 4 00		
	† 8 00		Ar Waverly (W. C. F. & N.)	Lv	* 3 00		
	† 12 01	0	Lv Waverly 6	Ar	† 10 50		
	12 30	6	Lv Bremer	Lv	10 30		
	1 00	13	Lv Tripoli	Lv	† 10 00		
	† 1 30	22	Ar Sumner 1	Lv	† 9 30		
					AM		

Winona—Rochester

Read Down		303 FRI. ONLY	409 MIXED EX. SUN.	Miles	TABLE 9	410 MIXED EX. SUN.	304 FRI. ONLY	Read Up	
		PM	AM		<i>Central Time</i>	AM	AM		
	4 30	† 9 00	0	Lv Winona	Ar	† 11 30	11 00		
	† 5 05		11	Lv Minnesota City	Lv	† 10 15			
	5 15	† 10 15	14	Lv Rollingstone	Lv	† 10 15	10 00		
			21	Lv Bear Creek	Lv				
	5 45	11 15	23	Lv Altura	Lv	9 30	9 05		
	6 00	† 11 45	27	Lv Bethany	Lv	† 9 00	8 48		
	6 13	† 12 15	32	Lv Utica	Lv	† 8 35	8 35		
	6 30	12 45	37	Lv St. Charles	Lv	8 00	8 20		
	6 42	† 1 15	41	Lv Dover	Lv	† 7 45	8 08		
	† 6 54		45	Lv Laird	Lv	† 7 55			
	† 7 02		49	Lv Horton	Lv	† 7 46			
	† 7 10	† 2 00	51	Lv Predmore	Lv	7 00	7 38		
	7 25	† 2 30	56	Lv Simpson 3	Lv	6 45	7 25		
	7 45	† 3 30	63	Ar Rochester 3	Lv	5 45	7 05		
						AM	AM		

PARMELEE COMPANY Auto-Transfer at CHICAGO from the GRAND CENTRAL STATION

Uniformed Parmelee transfer agents pass through the trains of the C. G. W. R. R. on approaching Chicago. They will arrange for transfer of passengers and baggage to principal hotels and other railroad stations, and for the delivery of baggage at hotels and residences in any part of the city.



Railway Express Agency Inc. Operates on the Chicago Great Western Railroad

From all stations along this railroad, shipments by express may be sent over the shortest and most direct routes to any of the 26,700 points in the United States, and Canada, served by the Railway Express Agency Inc.

The Railway Express Agency Inc. pick up and deliver shipments within its designated limits at no extra cost.

A duplicate system of receipts to the shipper and from the consignee insures safety.

Shipments are accepted either prepaid or with charges collect and C.O.D. Remittances promptly returned.

Free liability for full value up to \$50.00 for 100 lbs. or less—and at same ratio for heavier shipments.

Prompt notification if shipments cannot be delivered.

For details of rates, advice in regard as to packing and marking, or for vehicle call, telephone the Railway Express Agency Inc. Agent nearest you.

Through Pullman Service from and to Minneapolis—St. Paul—Des Moines—Los Angeles and Pacific Coast

Cars will operate every Tuesday during March, 1931, and Daily
April 1st to May 15th, 1931, inclusive

SANTA FE		No. 24		GRAND CANYON LIMITED						
Lv Los Angeles	12 30 PM	Mon.	Tue.	Wed.	Thur.	Fri.	Sat.	Sun.		
Lv Pasadena	1 00 PM									
Ar Grand Canyon	8 00 AM	Tue.	Wed.	Thur.	Fri.	Sat.	Sun.	Mon.		
Lv Grand Canyon	7 45 PM									
Ar Kansas City	5 15 PM	Thur.	Fri.	Sat.	Sun.	Mon.	Tue.	Wed.		

CHI. GT. WESTERN		No. 2-51		MILL CITIES LIMITED						
Lv Kansas City	5 30 PM	Thur.	Fri.	Sat.	Sun.	Mon.	Tue.	Wed.		
Ar St. Joseph	7 16 PM									
Ar Des Moines	11 25 PM									
Ar Marshalltown	1 12 AM	Fri.	Sat.	Sun.	Mon.	Tue.	Wed.	Thur.		
Ar Waterloo	2 35 AM									
Ar St. Paul	8 05 AM									
Ar Minneapolis	8 45 AM									

Daily Through Pullman Service from and to Minneapolis—St. Paul—Des Moines—San Antonio Texas, and Gulf Coast Points

Read Down		Chicago Great Western		Read Up	
	No. 52-1		No. 2-51		
	10 30 PM	Lv Minneapolis	Ar	8 45 AM	
	11 05 PM	Lv St. Paul	Ar	8 05 AM	
	10 10 PM	Lv Rochester	Ar	7 00 AM	
	4 17 AM	Lv Waterloo (Syc. St.)	Ar	2 40 AM	
	4 29 AM	Lv Waterloo ("U D")	Ar	2 35 AM	
	5 45 AM	Lv Marshalltown	Ar	1 12 AM	
	7 30 AM	Lv Des Moines	Ar	11 25 PM	
	11 45 PM	Lv St. Joseph	Ar	7 16 PM	
	1 40 PM	Ar Kansas City	Lv	5 30 PM	
	No. 3-23		No. 4-24		
	5 00 PM	Lv Kansas City	Ar	1 45 PM	
	7 55 AM	Ar Fort Worth	Lv	11 00 PM	
	8 10 AM	Ar Dallas	Lv	11 00 PM	
	3 10 PM	Ar Austin	Lv	4 05 PM	
	6 15 PM	Ar San Antonio	Lv	1 30 PM	
	7 30 PM	Ar Houston	Lv	12 01 PM	

EXPLANATION OF REFERENCE MARKS USED IN TRAIN SCHEDULES 1 TO 11, INCL., PAGES 7 TO 22, INCL.

Light face figures show time from 12.01 midnight to 12.00 noon.
Dark face figures show time from 12.01 noon to 12.00 midnight.

Figures opposite junction points refer to numbers of time tables showing diverging trains.

- * Daily. † Daily except Sunday. ‡ Stops only on signal.
- § Sleeping cars arriving Rochester may be occupied until 8.00 a. m. C. G. W. Station is only 2 blocks from heart of business section and conveniently near clinic buildings and hotels. Taxi service available, if desired, immediately on arrival of train.
- ¶ Via C. B. & Q. between St. Joseph and Kansas City.
- ⌘ Via Mantorville Transportation Co.
- ▲ Via C. & N. W. Ry. between Rochester and Dodge Center.
- ⬆ Every Tuesday during March, 1931, and daily April 1st to May 15, 1931, incl.
- ⊙ Sleeper ready for occupancy at 9.00 p. m.
- ⊙ Sleeper ready for occupancy at 10.00 p. m.
- ⊙ Sleeper ready for occupancy at 9.45 p. m.
- ⊙ Sleeper may be occupied until 8.00 a. m.
- ⊙ Sleeper ready for occupancy at 8.00 p. m.
- D. R. Drawing Room.
- Compt. Compartment.
- a Stops to receive passengers for St. Paul and Minneapolis.
- b Stops to discharge passengers from Omaha and Council Bluffs.
- c Stops to receive passengers for points south of Oelwein where train stops.
- d Stops to discharge pay passengers from Chicago and Forest Park.
- e Stops to discharge passengers from Dubuque and east thereof.
- f Stops to discharge passengers from Kansas City, St. Joseph or Des Moines.
- g Stops to receive passengers for Oelwein and beyond.
- h Stops to receive passengers for Chicago.
- i Stops to discharge passengers from St. Paul and Minneapolis.
- j Stops to discharge passengers from points on the Minnesota Division. (Oelwein West and North thereof.)
- k Auto bus for Freeport meets trains Nos. 2 and 4 regularly at South Freeport; meets Nos. 1 and 5 on advice from conductor.
- l Tickets will be sold to South Freeport only. Passengers will pay transfer charge to Bus Company.
- m Stops to discharge passengers from Iowa Division. (Oelwein and South thereof.)
- n Stops to discharge passengers.
- o Stops to receive passengers for Rochester, St. Paul or Minneapolis.
- p Stops to receive passengers for points east of Oelwein where train stops.
- q Stops to discharge pay passengers from Chicago and Forest Park.
- r Stops on signal to receive passengers for Council Bluffs and Omaha.
- s Stops on signal to receive passengers for Kansas City or beyond.
- t Stops to receive passengers for points south of Hayfield where train stops.
- u Stops to discharge passengers from points on Iowa Division. (Oelwein and South thereof.)
- v Stops to discharge passengers from Rochester, St. Paul or Minneapolis.
- w Stops to receive passengers for points south of Hayfield where train stops.

Railroad and Sleeping Car Fares to Rochester, Minn.

from the principal cities of the United States and Canada. Pullman rates include surcharge. Fares and rates quoted are for information only and are subject to tariff regulations.

Fast, all-steel splendidly appointed trains are operated via the GREAT WESTERN every day from and to these five great gateways—Chicago, St. Paul—Minneapolis, St. Joseph, Kansas City and Omaha. Direct connection with through transcontinental trains is made at Union Stations in Kansas City, St. Paul, Chicago and Omaha.

TO Rochester, Minn.	RAILROAD FARES		SLEEPING CAR RATES			
	One Way	Round Trip Six Month Limit	Standard Car			
			Lower	Upper	Drawing Room	Com- part- ment
FROM						
Atlanta	39.20	70.60	12.00	9.60	43.50	33.75
Austin	42.12	75.85	13.13	10.50	46.50	36.75
Birmingham	36.19	65.20	11.25	9.00	40.50	31.50
Boston (B. & A.)	49.20	90.01	12.75	10.20	45.00	36.00
Boston (B. & M.)	48.63	89.62	12.75	10.20	45.00	36.00
Buffalo (Standard)	31.28	56.31	9.38	7.50	34.50	26.25
Buffalo (Differential)	29.78	53.61	9.38	7.50	34.50	26.25
Chattanooga	34.27	61.75	10.13	8.10	36.00	28.50
Chicago	12.47	22.45	3.75	3.00	13.50	10.50
Cincinnati	22.73	40.92	7.50	6.00	27.00	21.00
Cleveland (Standard)	24.75	44.56	7.50	6.00	27.00	21.00
Cleveland (Differential)	23.75	42.76	7.50	6.00	27.00	21.00
Columbus	23.72	42.70	7.50	6.00	27.00	21.00
Council Bluffs	30.16	51.05	3.75	3.00	13.50	10.50
Dallas	34.95	62.95	11.25	9.00	40.50	31.50
Dayton	22.07	39.73	7.50	6.00	27.00	21.00
Denver	30.21	54.40	9.75	7.80	34.50	27.75
Des Moines	8.82	15.90	3.75	3.00	13.50	10.50
Detroit	22.28	40.11	7.50	6.00	27.00	21.00
Dodge Center	6.65	1.30				
Dubuque	6.74	12.15	3.00	2.40	10.50	9.00
Fort Dodge	5.77	10.40	3.00	2.40	10.50	9.00
Fort Wayne	17.80	32.05	6.75	5.40	24.00	19.50
Fort Worth	34.95	62.95	11.25	9.00	40.50	31.50
Houston	43.33	79.40	14.25	11.40	51.00	40.50
Indianapolis	19.09	34.37	7.50	6.00	27.00	21.00
Jacksonville	51.42	92.60	15.75	12.60	55.50	44.25
Kansas City	17.13	30.85	5.63	4.50	21.00	15.75
Leavenworth	16.14	29.10	5.63	4.50	21.00	15.75
Lima	19.95	35.92	6.75	5.40	24.00	19.50
Lincoln	12.84	23.15				
Los Angeles	74.16	135.62	23.63	18.90	84.00	64.00
Louisville	23.27	41.89	7.50	6.00	27.00	21.00
Marshalltown	6.74	12.15	3.00	2.40	10.50	9.00
Mason City	3.17		3.00	2.40	10.50	9.00
Memphis	29.54	53.35	9.38	7.50	34.50	26.25
Minneapolis	3.74	4.80				
Muskogee	26.24	47.25	8.25	6.60	30.00	23.25
Nashville	28.79	51.90	8.25	6.60	30.00	23.25
New Orleans	43.72	78.90	13.88	11.10	49.50	39.00
New York (Standard)	45.17	81.31	12.75	10.20	45.00	36.00
New York (Differential)	43.17	77.71	12.75	10.20	45.00	36.00
Oklahoma City	29.47	55.10	9.75	7.80	36.00	27.75
Omaha	10.86	19.55	3.75	3.00	13.50	10.50
Philadelphia	41.93	75.48	12.00	9.60	43.50	33.75
Pittsburgh	29.35	52.84	8.25	6.60	30.00	23.25
Portland	68.40	120.10	19.88	15.90	70.50	54.00
St. Joseph	14.56	26.25	4.50	3.60	16.50	12.75
St. Louis	18.44	33.20	7.50	6.00	27.00	21.00
St. Paul	3.36	4.40				
San Antonio	45.06	81.15	14.25	11.40	51.00	40.50
San Francisco	74.16	135.62	23.63	18.90	84.00	64.00
Seattle	63.30	120.10	19.88	15.90	70.50	54.00
South Bend	15.56	28.02				
Spokane	54.91	103.40	16.50	13.20	58.50	46.50
Springfield	18.26	32.90	7.50	6.00	27.00	21.00
Toledo	20.89	37.61	7.50	6.00	27.00	21.00
Toronto	30.53	54.86	9.38	7.50	34.50	26.25
Tulsa	26.03	47.45	9.38	7.50	34.50	26.25
Waco	38.16	68.75	12.00	9.60	42.00	33.75
Waterloo	5.03	10.00	3.00	2.40	10.50	9.00
Washington	40.25	72.46	12.00	9.60	43.50	33.75
Winnipeg	19.61		4.50	3.60	16.50	12.75
Youngstown	27.09	48.40	8.25	6.60	30.00	23.25

- ① Via Oelwein or via C. G. W., Dodge Center and Royal Rapid Transit Co. Motor Coach.
- ② Via C. G. W., Dodge Center and rail or Motor Coach.
- ③ Sleeping Car to Dodge Center; thence Royal Rapid Transit Co. Motor Coach.
- ④ Royal Rapid Transit Co. Motor Coach.
- ⑤ Sleeping car space available to St. Paul only. Passengers will use parlor car space beyond.
- ⑥ Final limit 30 days.

See page 29 for Rochester optional route and stopover privileges.

Cafe-Parlor and Sleeping Car Rates

(Including surcharge)

BETWEEN	†Cafe Parlor Car Seat	Lower Double Berth	Upper Double Berth	Section for One Passenger	Section for Two Passengers	Drawing Room	Compartment
CHICAGO AND							
St. Charles to Sycamore, Inc.	\$0.38						
Byron to South Freeport, Inc.	.53						
Dubuque	.75	\$3.00	\$2.40	\$4.20	\$5.40	\$10.50	\$9.00
Dyersville to McIntire, Inc.	1.13	3.00	2.40	4.20	5.40	10.50	9.00
Dodge Center to St. Paul-Minneapolis		3.75	3.00	5.25	6.75	13.50	10.50
Leroy		3.00	2.40	4.20	5.40	10.50	
Ostrander to Rochester, Inc.		3.75	3.00	5.25	6.75	13.50	10.50
*Douglas to Red Wing to Randolph Waterloo	1.13	3.00	2.40	4.20	5.40	10.50	
Marshalltown	1.13	3.75	3.00	5.25	6.75	13.50	
Des Moines	1.50	3.75	3.00	5.25	6.75	13.50	
OMAHA AND							
Carroll	.53						
Ft. Dodge to Waverly, Inc.	.75						
Belmond to Mason City, Inc.	.90	3.00	2.40	4.20	5.40	10.50	
Manly	1.13	3.00	2.40	4.20	5.40	10.50	
Lyle to St. Paul-Minneapolis, Inc.	1.13	3.75	3.00	5.25	6.75	13.50	
DUBUQUE AND							
Chicago	.75	3.00	2.40	4.20	5.40	10.50	9.00
Sycamore	.53						
New Hampton	.53						
Leroy to Rochester, Inc.	1.13	3.00	2.40	4.20	5.40	10.50	9.00
Dodge Center to St. Paul-Minneapolis		3.00	2.40	4.20	5.40	10.50	9.00
Waterloo	.38	3.00	2.40	4.20	5.40	10.50	
Gladbrook to Marshalltown, Inc.	.75	3.00	2.40	4.20	5.40	10.50	
Des Moines	.90	3.00	2.40	4.20	5.40	10.50	
St. Joseph to Kansas City, Inc.		3.75	3.00	5.25	6.75	13.50	
ST. PAUL OR MINNEAPOLIS AND							
Randolph to Kenyon and Red Wing Zumbrota	.38						
Pine Island to Rochester, Inc.	.75						
Dodge Center to Austin, Inc.	.53						
Lyle to Fort Dodge, Inc.	.75	3.00	2.40	4.20	5.40	10.50	
Lorville to Carroll, Inc.	.90	3.75	3.00	5.25	6.75	13.50	
Manning to Omaha, Inc.	1.13	3.75	3.00	5.25	6.75	13.50	
New Hampton to Oelwein, Inc.	.75	3.00	2.40	4.20	5.40	10.50	9.00
Dyersville to Dubuque, Inc.		3.00	2.40	4.20	5.40	10.50	9.00
Galena Junction to Chicago, Inc.	.75	3.75	3.00	5.25	6.75	13.50	10.50
Waterloo	.90	3.00	2.40	4.20	5.40	10.50	
Reinbeck to Gladbrook, Inc.	1.13	3.00	2.40	4.20	5.40	10.50	
Marshalltown	1.13	3.75	3.00	5.25	6.75	13.50	
Des Moines	1.13	3.75	3.00	5.25	6.75	13.50	
St. Joseph to Kansas City, Inc.		5.63	4.50	7.88	10.13	21.00	
KANSAS CITY AND							
Des Moines to Marshalltown, Inc.	1.13	3.75	3.00	5.25	6.75	13.50	
Gladbrook to Oelwein, Inc.	1.50	3.75	3.00	5.25	6.75	13.50	
Leroy		4.50	3.60	6.30	8.10	16.50	
Spring Valley		5.25	4.20	7.35	9.45	19.50	
Rochester		5.63	4.50	7.88	10.13	21.00	
*Douglas to Red Wing to Randolph Oelwein to Sumner, Inc.		5.63	4.50	7.88	10.13	21.00	
New Hampton to Dodge Center, Inc.		4.50	3.60	6.30	8.10	16.50	
Randolph to St. Paul-Minneapolis, Inc.		5.63	4.50	7.88	10.13	21.00	
ST. JOSEPH AND							
Des Moines	.90	3.00	2.40	4.20	5.40	10.50	
Marshalltown	.90	3.38	2.70	4.73	6.08	12.50	
Gladbrook to Oelwein, Inc.	1.13	3.75	3.00	5.25	6.75	13.50	
Leroy		4.13	3.00	5.78	7.43	15.00	
Spring Valley to Rochester		4.50	3.60	6.30	8.10	16.50	
Sumner to New Hampton, Inc.		3.75	3.00	5.25	6.75	13.50	
St. Paul and Minneapolis		5.63	4.50	7.88	10.13	21.00	
Dubuque		3.75	3.00	5.25	6.75	13.50	
DES MOINES AND							
Marshalltown	.38						
Waterloo	.53						
Oelwein	.75	3.00	2.40	4.20	5.40	10.50	
New Hampton	1.13	3.00	2.40	4.20	5.40	10.50	
Tapoi and Dodge Center	1.13	3.38	2.70	4.73	6.08	12.50	
Kenyon to St. Paul-Minneapolis	1.13	3.75	3.00	5.25	6.75	13.50	
Leroy		3.00	2.40	4.20	5.40	10.50	
Spring Valley to Rochester		3.75	3.00	5.25	6.75	13.50	
Dubuque	.90	3.00	2.40	4.20	5.40	10.50	
South Freeport to Chicago, Inc.	1.50	3.75	3.00	5.25	6.75	13.50	
St. Joseph	.90	3.00	2.40	4.20	5.40	10.50	
Kansas City	1.13	3.75	3.00	5.25	6.75	13.50	

†Also Buffet-Club Cars. Seat fares in Pullman Sleeping or Parlor Cars are, in some cases, slightly higher. * In Parlor Car beyond Rochester.

NOTE: The minimum charge for exclusive use of drawing-room will be two adult passage tickets; for compartment one and one-half adult passage tickets and for section one adult ticket.

One-Way Local Fares

(Fares quoted herein are for information only and are subject to tariff regulations)

BETWEEN AND	Chicago, Ill.	Des Moines, Ia.	Dubuque, Ia.	Kansas City, Mo.	Omaha, Neb.	Rochester, Minn.	St. Joseph, Mo.	St. Paul, Minn.	Minneapolis, Minn.
Afton Jct., Ia.	\$13.76	\$ 1.98	\$ 9.40	\$ 6.33	\$10.80	\$ 3.76	\$11.37	\$11.58	
Austin, Minn.	12.51	8.92	6.82	17.22	9.16	5.20	14.65	3.53	3.92
Belmond, Ia.	12.84		6.62		6.51	7.85		6.18	6.39
Benton, Ia.	14.77	2.99	10.41	5.32		11.81	2.75	12.38	12.59
Blockton, Ia.	15.11	3.33	10.74	4.98		12.15	2.42	12.71	12.93
Byron, Ill.	3.17	10.49	3.36	15.85	14.73	10.10	15.85	12.22	12.62
Cannon Falls, Minn.	13.68	9.62	8.16	17.91	11.74	2.63	15.35	1.42	1.79
Carroll, Ia.	14.42		9.03		3.33	10.43		9.36	9.36
Cedar Falls, Ia.	10.12	3.87	3.62	12.16		5.49	9.59	7.88	8.25
Clarion, Ia.	12.76		6.23		6.12	7.64		6.57	6.78
Clarksville, Ia.	10.73	6.30	4.20	14.60	8.15	5.61	12.03	8.00	8.37
Conception, Mo.	16.13	4.35	11.76	3.98		13.17	1.41	13.73	13.95
Council Bluffs, Ia.	17.63		11.87		3.0	10.56		12.39	12.39
Des Moines, Ia.	12.89		7.42	8.30		8.82	5.74	9.39	9.60
Diagonal, Ia.	14.49	2.72	10.13	5.60		11.54	3.03	12.10	12.32
Dodge Center, Minn.	12.85	8.63	6.54	16.94	10.11	3.33	14.37	2.60	2.97
Dubuque, Ia.	6.53	7.42		14.81	12.04	6.74	13.16	8.86	9.26
Dyersville, Ia.	7.59	6.32	1.06	14.62	10.99	5.63	12.05	8.02	8.39
Eagle Grove, Ia.	13.12		6.59		5.78	8.00		6.92	7.14
Elizabeth, Ill.	5.16	8.79	1.37	15.85	13.41	8.10	14.52	10.23	10.63
Elmhurst, Ill.	.62	12.80	5.92	17.34	17.30	12.47	17.03	14.27	14.66
Elma, Ia.	10.92	6.48	4.40	14.79	10.86	2.34	12.22	4.73	5.10
Faribault, Minn.	15.10	10.22	8.77	18.51	12.34	3.69	15.95	2.02	2.39
Farley, Ia.	7.36	6.56	.83	14.81	11.23	5.87	12.29	8.26	8.63
Ft. Dodge, Ia.	13.48		6.95		5.09	8.67		7.60	7.60
Fredericksburg, Ia.	10.10	5.66	3.57	13.96	10.59	3.17	11.39	5.56	5.94
Galena Jct., Ill.	5.68	8.27	8.66	15.67	12.90	7.59	14.01	9.72	10.12
Gladbrook, Ia.	10.68	2.70	4.73	11.00		6.14	8.43	8.37	8.37
Goodhue, Minn.	12.92	10.11	8.02	18.41	12.16	1.30	15.84	2.07	2.45
Hampton, Ia.	11.78		5.25		7.11	6.65		7.54	7.76
Harlan, Ia.	15.90		10.48		1.88	10.56		10.82	10.82
Hayfield, Minn.	12.51	8.30	6.21	16.60	9.77	2.99	14.03	2.92	3.30
Kansas City, Kan.	17.54	8.15	14.81	.16		16.97	2.43	17.54	17.75
Kansas City, Mo.	17.54	8.30	14.81			17.13	2.57	17.68	17.90
Kenyon, Minn.	13.52	9.30	7.22	17.61	10.78	3.58	15.04	1.91	2.30
Lamont, Ia.	8.64	5.31	2.12	13.61	10.24	4.62	11.04	7.01	7.38
Leavenworth, Kan.	17.54	7.32	14.74	1.00		16.14	1.59	16.71	16.92
Le Roy, Minn.	11.55	7.32	5.24	15.63	10.86	1.50	13.06	4.42	4.79
Lohrville, Ia.	14.27		8.25		4.12	9.65		8.57	8.57
Lorimer, Ia.	13.76	1.70	9.11	6.62		10.52	4.05	11.08	11.30
Lyle, Minn.	12.70	9.32	7.23	17.62	8.75	5.61	15.05	3.94	4.32
Mankato, Minn.	16.81	11.93	10.48	20.22	14.05	5.40	17.66	3.73	4.10
Manning, Ia.	15.04		9.65		2.72	10.56		9.98	9.98
Mantorville, Minn.	13.27	9.04	6.95	17.34	10.53	3.75	14.78	2.69	3.06
Marshalltown, Ia.	10.68	2.09	5.33	10.40		6.74	7.83	8.37	8.37
Mason City, Ia.	12.70		7.80		7.70	6.66		5.00	5.20
McIntire, Ia.	11.50	7.06	4.97	15.36	10.86	7.22	12.80	4.16	4.53
Melbourne, Ia.	11.32	1.62	5.81	9.92		7.22	7.35	8.85	8.85
Minden, Ia.	17.04		11.16		1.20	10.56		11.49	11.49
Minneapolis, Minn.	14.66	9.60	9.26	17.90	12.69	3.74	15.34	3.9	
New Hampton, Ia.	10.41	5.97	3.88	14.27	10.86	2.86	11.70	5.25	5.62
Northfield, Minn.	14.60	9.72	8.27	18.01	11.84	3.19	15.45	1.52	1.89
North Hanover, Ill.	5.30	8.67	1.25	15.85	13.29	7.98	14.40	10.11	10.51
Oelwein, Ia.	9.20	4.76	2.67	13.06	9.69	4.07	10.49	6.46	6.83
Omaha, Neb.	17.93		12.04			10.86		12.69	12.69
Onida, Ia.	8.09	5.86	1.56	14.16	10.79	5.18	11.60	7.56	7.94
Osage, Ia.	12.10	7.66	5.57	15.96	11.46	2.36	13.40	4.76	5.13
Pearl City, Ill.	4.32	9.63	2.21	15.85	14.25	8.94	15.36	11.07	11.47
Pine Island, Minn.	12.92	9.42	7.34	17.73	11.46	6.00	15.16	2.76	3.14
Randolph, Minn.	14.27	9.39	7.94	17.68	11.51	2.86	15.12	1.19	1.56
Red Wing, Minn.	12.92	10.38</							



CHICAGO GREAT WESTERN RAILROAD

TOTAL MILEAGE 1495.27 miles

General Offices, Peoples Gas Building, 122 South Michigan Blvd., Chicago, Ill. (except as otherwise noted).



EXECUTIVE

P. H. JOYCE, Chairman Executive Committee
V. V. BOATNER, President

W. G. LERCH..... Vice-President and Secretary
OSCAR TOWNSEND..... Vice-President in charge of Traffic
R. M. SHAW..... General Counsel

TRAFFIC

OSCAR TOWNSEND..... Vice-President

Passenger

E. W. IRELAND..... General Passenger Agent
S. M. LUNDBERG, 715 Walnut St., Kansas City, Mo., Asst. Gen'l Passenger Agent
R. A. BISHOP*..... Manager, Mail, Baggage and Express Traffic
W. E. MEYERS*..... Superintendent Dining Cars

J. M. BATHS, Chicago, Ill..... General Superintendent
C. G. DELO*..... Chief Engineer
W. C. HARVEY*..... Valuation Engineer
W. R. ROOF*..... Bridge Engineer
E. J. BRENNAN, Oelwein, Iowa..... Superintendent Motive Power
A. C. SIMMONS*..... Purchasing Agent
S. V. ROWLAND, Oelwein, Iowa..... Superintendent Illinois Division
C. J. KAVANAGH, St. Paul, Minn..... Superintendent Minnesota Division

W. H. SIEVERS*..... General Auditor
F. B. LONGFIELD*..... Auditor Freight Receipts

LEGAL

R. M. SHAW, 1400 First National Bank Bldg., Chicago..... General Counsel
W. H. JACOBS, 1400 First National Bank Bldg., Chicago..... General Solicitor

ACCOUNTING

Freight

B. F. PARSONS..... General Freight Agent
P. R. FLANAGAN..... General Freight Agent (Solicitation)
B. R. HARRIS..... Assistant General Freight Agent
T. L. RITCHEY, 604 Corby Bldg., St. Joseph, Mo. Assistant General Freight Agent
T. J. DEGROODT, St. Paul and Minneapolis, Minn. Assistant General Freight Agent
W. I. LAIRD, 503 Locust St., Des Moines, Iowa. Assistant General Freight Agent
D. W. QUICK, 1414 First Nat'l Bank Bldg., Omaha, Neb. Asst. Gen'l Frt. Agent

OPERATING

E. W. FOWLER, Des Moines, Iowa..... Superintendent Iowa Division
GELMER KUIPER..... General Claim Agent
R. B. CROLL*..... Superintendent of Transportation
G. O. PERKINS*..... Superintendent of Telegraph
T. W. FATHERSON, Oelwein, Iowa..... Engineer Maintenance of Way
J. E. RHODES, Oelwein, Iowa..... Supervisor of Stations
W. S. SHORT, Oelwein, Iowa..... Chief Special Agent

TREASURY

C. A. COOK*..... Treasurer
A. A. SREG*..... Assistant Treasurer and Paymaster

*Offices at 303 West Harrison Street, Chicago, Ill.

*Offices in Grand Central Station, Wells and Harrison Streets, Chicago, Ill.

◇Offices 1400 First National Bank Bldg., Chicago, Ill.

TRAFFIC DEPARTMENT REPRESENTATIVES

Requests for tickets, sleeping car space and detailed information about passenger and freight rates, routes and service, will receive prompt attention upon application to the nearest representative named below.

ATLANTA, GA.—918 Healy Bldg., 57 Forsyth St., Phone Walnut 7648
H. E. McELROY, General Agent..... J. H. WRIGHT, Traffic Agent
BOSTON, MASS.—530 Old South Bldg., 294 Washington St., Phone Liberty 1417
E. M. WOODWORTH, General Agent..... R. J. KELLY, Traffic Agent

CHICAGO, ILL.—122 South Michigan Blvd.
W. B. CARLILE..... General Development Officer
Room 803-807, 111 W. Jackson Blvd., Phone Wabash 2661
T. G. KEES..... General Agent Passenger Department

WM. BLOCKER..... City Passenger Agent
F. P. CRAWFORD..... Division Freight and Passenger Agent
N. R. MARKLE..... General Agent Freight Department
W. C. EBERT—H. F. BIALLAS..... Contracting Freight Agents
LAWRENCE B. ALFS—R. G. STEWART..... Traffic Agents
F. E. BAILER—L. J. WELLINGTON..... Contracting Freight Agents
J. M. SCHWARTZ—E. R. SCHULZ—V. T. LEWIS..... Contracting Freight Agents

Consolidated Ticket Office, 179 W. Jackson Boulevard, Phone Wabash 4600
H. M. THOMAS..... City Ticket Agent
Hotel Ticket Offices—Congress Hotel, Palmer House, Great Northern Hotel,
La Salle Hotel, Sherman Hotel and Stevens Hotel

CINCINNATI, OHIO—321 Dixie Terminal Bldg., Phone Main 3214
G. R. GREGG, General Agent..... E. C. BYWATER, Traffic Agent

CLEVELAND, OHIO—503 Term. Tower Bldg., 50 Public Square, Phone Main 5737
S. D. BEIR, General Agent..... R. V. STEFFEN—A. S. EATON, Traffic Agents

COUNCIL BLUFFS, IOWA—Chicago Great Western Station—Main Street and 9th Avenue, Phone 141
A. P. FORD..... Agent

DALLAS, TEXAS—1806 Santa Fe Bldg., 1114 Commerce St., Phone 2-4668
R. J. SEPTON..... General Agent
W. N. JONES, JR. (Pass'r)—C. M. COBB—R. M. HOUSTON—GEO. W. BOYLE
Traffic Agents

DENVER, COLO.—213 Denham Bldg., 18th & California Sts., Phone Tabor 5601
P. J. CLEARY, General Agent..... V. J. TANLUND, Traffic Agent

DES MOINES, IOWA—City Ticket Office—503 Locust St., Phone 4-2056
E. M. PECK..... General Agent Passenger Department
P. L. BOYCE, City Pass'r Agent..... L. S. HELLWITZ, City Ticket Agent
M. E. SCHNELL..... District Passenger Agent

Phone 4-4287
W. I. LAIRD..... Assistant General Freight Agent
LOYD JODON..... Division Freight and Passenger Agent
J. D. CUNNINGHAM, Commercial Agent..... J. I. SELL, Traffic Agent

DETROIT, MICH.—819 Transportation Bldg., 131 La Fayette Blvd.,
Phone Randolph 8347
J. J. HOWE..... General Agent
L. W. MATYIN—R. L. SCHLERETH..... Traffic Agents

DUBUQUE, IOWA—Foot of 8th Street, Phone 123 and 1131
W. L. SEELEY..... General Agent
W. G. CAMPBELL..... Contracting Freight Agent

FORT DODGE, IOWA—12th Street and Central Avenue, Phone Walnut 1220
C. F. KOERN..... Division Freight and Passenger Agent
L. V. GEER..... Traffic Agent

HOUSTON, TEX.—1104 Second Nat'l. Bank Bldg., Phone Capital 1729
J. H. CUMMINGS..... General Agent
R. E. CARTER..... Traffic Agent

KANSAS CITY, KAN.—909 North 6th Street, Phone Grand 1702
G. H. FOOTE..... Agent

KANSAS CITY, MO.—715 Walnut Street, Phone Main 7000
S. M. LUNDBERG..... Assistant General Passenger Agent
F. P. WAGNER..... City Passenger Agent
CONRAD MCGOOGAN..... District Passenger Agent
ROBERT OWENS..... Station Passenger Agent
A. W. NELSON..... General Agent
G. H. SHIELDS—C. G. STEWART—C. J. DAMERON..... Contracting Freight Agents

LOS ANGELES, CAL.—507 Central Bldg., 108 West Sixth St., Phone VAndike 8731
C. J. CHISAM, General Agent..... G. R. ALLEN, Traffic Agent

MARSHALLTOWN, IOWA—3d Avenue and Nevada Street, Phone 150
FRED MERTENS..... Agent

MASON CITY, IOWA—Chicago Great Western Depot, Phone 105
J. H. McWATERS, General Agent..... W. S. ELLIS, Agent

MILWAUKEE, WIS.—1217 Majestic Bldg., 231 W. Wisconsin Ave.,
Phone Marquette 2261
F. E. PETTIBONE..... General Agent
S. A. EDDY—R. J. WILLIAMS..... Traffic Agents



TRAFFIC DEPARTMENT REPRESENTATIVES—Continued.



MINNEAPOLIS, MINN.—City Ticket Office—636 Marquette Ave.,
Phone Main 3561
C. D. FISHER—General Agent Passenger Department
C. C. JOHNSON—G. W. KITZMILLER—City Passenger Agents
S. A. SWANSON—City Ticket Agent
C. J. BROOKS—District Passenger Agent
214 Metropolitan Life Building, 125 3rd St. South, Phone Main 3561
B. J. DEGROODT—Assistant General Freight Agent
W. E. SEMMER—General Agent Freight Department
M. D. HARRINGTON—J. E. CHRISTIE—Contracting Freight Agents
NEW ORLEANS, LA.—927 Hibernia Bank Bldg., 812 Gravier St., Phone Main 4215
R. C. JAMISON—General Agent
NEW YORK—1621-1622 Transportation Bldg., 225 Broadway,
Phone Barclay 8385 and 8386
A. V. VON ARX—General Eastern Freight Agent
ADAM TAIT—WALTER WEGER—J. W. BATES—Traffic Agents
OMAHA, NEB.—1414-1st Nat'l Bk. Bldg., 16th & Farnum Sts., Phone Jackson 0260
H. T. MINKLER—General Agent Passenger Department
H. D. PHILLIPS—District Passenger Agent
D. W. QUICK—Assistant General Freight Agent
D. NORTUP—Commercial Agent
EVERETT STOLL—Traffic Agent A. G. CHAPLIK, Contracting Freight Agent
Union Ticket Office—311 South 16th St., Phone Atlantic 9888
PHILADELPHIA, PA.—1109 Franklin Trust Building,
Phone Rittenhouse 4133
G. L. SPRINGER, General Agent. A. J. O'CONNOR, Traffic Agent
PITTSBURGH, PA.—302 Henry W. Oliver Building, 529 Smithfield St.,
Phone Atlantic 2334
H. T. ROBINSON—General Agent
C. A. HOWE—A. S. COLLINS—W. K. YOUNG—Traffic Agents
PORTLAND, ORE.—326 American Bank Building, 329 Morrison St.,
Phone Beacon 8798
J. H. LYMAN, Gen'l Agt.—C. A. FULLEN, Ass't Gen'l Agt.—W. W. JONES, Traffic Agt.
RED WING, MINN.—C. G. W. Depot, Main & Fulton Sts., Phone 780
A. F. HALL—Division Freight and Passenger Agent
FRED WIGHT—C. O. WATTERS—Traffic Agents
ROCHESTER, MINN.—Depot, 1st Ave., and 1st St., Phone 2056
C. C. CREW—City Passenger Agent
A. N. ANDERSON, Ass't. City Passenger Agt.—J. E. ORTMAN, Depot Ticket Agt.
City Ticket Office, Zumbro Hotel, Phone 3236—T. M. McDONNELL, City Tkt. Agt.
Freight Depot, 1st Ave. and 1st St., Phone 2150—G. A. SMALLEY—Agent

SAN FRANCISCO, CAL.—824-28 Monadnock Building, 681 Market St.,
Phone Garfield 2390
J. A. WALDEN—General Agent
ALLAN DONALDSON, W. M. ANDERSON, C. W. HOFMANN—Traffic Agents
SEATTLE, WASH.—1001 White-Henry-Stuart Bldg., 4th Ave. & Union St.,
Phone Elliott 2317
DAVID STOREY—General Agent
J. S. COWARD—W. M. WICKER—G. JANSON—Traffic Agents
SOUTH ST. PAUL, MINN.—Exchange Bldg.
G. E. BLAUL—General Live Stock Agent
SPOKANE, WASH.—1003 Old National Bank Bldg., Phone Main 3840
M. O. CULTON—General Agent
D. J. O'LEARY—H. J. LANNON—Traffic Agents
ST. JOSEPH, MO.
605 Corby Building, 5th & Felx Sts., Phone 6—1896
T. L. RITCHIEY—Assistant General Freight Agent
F. D. SHANKS—Commercial Agent
R. W. HAYES—Traffic Agent
F. H. BYERS—Traffic Agent
ST. LOUIS, MO.—1808 Railway Exch. Bldg., 611 Olive St., Phone Chestnut 6982
F. O. MOONEY—General Agent
W. C. LUNDBERG—T. J. MEENAN—Traffic Agents
ST. PAUL, MINN.—City Ticket Office—48 East Fourth St., Phone Riverview 4200
C. D. FISHER—General Agent Passenger Department
P. K. PULTE—J. M. GANLEY, City Passenger Agts. R. D. WADDELL, City Tkt. Agt.
712 Pioneer Building, 4th and Robert Sts., Phone Riverview 4200
B. J. DEGROODT—Assistant General Freight Agent
R. M. HATFIELD—General Agent Freight Department
M. E. JOHNSON—J. B. KENNIFF—Traffic Agents
JAY NORMAN—H. J. HALLBECK—Contracting Freight Agents
SYCAMORE, ILL.—C. G. W. Depot, Main and Maple Sts., Phone Sycamore 128
A. E. ADAMS—Live Stock Agent
TULSA, OKLA.—317 Kennedy Bldg., Fourth St. and Boston Ave., Phone 3-4432
J. B. HOVERSON, General Agent O. F. THOMPSON—H. H. CONVERSE, Traffic Agts.
WATERLOO, IOWA—Chicago Great Western Station, Phone No. 8
A. J. HOWARD—General Agent
WICHITA, KAN.—505 Wheeler-Kelly-Haggy Building, 120 S. Market St.,
Phone 3-3014
S. E. DILLON, General Agent. J. A. McROBERTS, J. M. STEFFENS, Traffic Agents
WINNIPEG, MAN.—301 McArthur Building, 211 Portage Ave., Phone 26171
T. C. THOMAS, General Agent A. C. COOK, Traffic Agent

TRAVELERS' INFORMATION

NOT RESPONSIBLE—The Chicago Great Western R. R. Co. is not responsible for errors in time tables, inconvenience or damage resulting from delayed trains or failure to make connections. Schedules herein are subject to change without notice.

CHILDREN under five years of age free, when accompanied by parent or guardian; five years of age and under twelve, one-half fare; twelve years of age or over, full fare.

STOP-OVERS—Stop-overs within limit will be allowed on all first class one-way or round-trip tickets at all intermediate points enroute upon application to Conductor.

OPTIONAL ROUTES—One-way tickets reading between St. Paul or Minneapolis, Minn., and Chicago, Ill., will be honored via main line direct or via Rochester.

One-way tickets issued at or destined to St. Paul or Minneapolis, reading via Chicago Great Western to or from Kansas City, may be exchanged for ticket via Chicago Great Western VIA ROCHESTER upon payment of \$1.00. Agents at Kansas City, Des Moines, McIntire and Delwin, Northbound, and at St. Paul, Minneapolis and Randolph, Southbound, are authorized to make this exchange. There is no charge for the Rochester route on Chicago Great Western Twin City-Kansas City coupons when ticket reads to or from points beyond St. Paul-Minneapolis.

Passengers holding round-trip tickets reading between St. Paul or Minneapolis and Dubuque, Iowa, and points east; Marshalltown, Iowa, and points south; or Fort Dodge, Iowa, and points west via Hayfield, can have their through tickets honored via Rochester without extra charge, or may have them honored northbound to Dodge Center, Minn., and from Rochester to St. Paul or Minneapolis, and southbound from St. Paul or Minneapolis to Rochester and from Dodge Center and Rochester.

Round-trip tickets to St. Paul or Minneapolis from or via Chicago, Dubuque and intermediate stations; Kansas City, Marshalltown and intermediate stations; or Omaha, Fort Dodge and intermediate stations will be honored for return direct from Rochester or Dodge Center if desired, and, if required, will be validated at those points.

ADJUSTMENT OF FARES—In cases of dispute with Conductors or Agents, pay the fare required, take receipt and communicate with General Passenger Agent, Chicago Great Western Railroad, Co., 122 South Michigan Avenue, Chicago, Ill.

REDEMPTION OF TICKETS—Tickets unused, or partly used, will be redeemed under tariff regulations at proper value.

BAGGAGE MAXIMUMS—No single piece of baggage exceeding 250 pounds in weight, or 72 inches in greatest dimension, or single shipment exceeding \$2,500 in value will be checked. Free allowances are subject to tariff stipulations as to contents, weight, value and size.

LIABILITY LIMITED—Excess value of baggage to be declared and paid for at time of checking.

BICYCLES (not motor cycles), **BABY CARRIAGES**, **DOGS AND GUNS** are transported in baggage cars subject to tariff regulations.

HAND BAGGAGE IN PULLMAN CARS is restricted to what can be conveniently placed in the berth, seat or other accommodations purchased by the passenger.

LOST ARTICLES to be inquired for of Manager, Mail, Baggage and Express traffic, Chicago Great Western Railroad Co., Grand Central Stations, Chicago, Ill. No responsibility is assumed for unchecked articles left in stations or cars.

CONDUCT OF EMPLOYEES—Passengers are requested to report to the General Passenger Agent at Chicago any instance of incivility or lack of attention on the part of employees of this Railroad.

FREIGHT TRAINS—This Railroad carries adult male passengers on a limited number of freight trains and is not a common carrier of passengers by such trains, and does not stop such trains at stations or station platforms, except when the freight business of the road requires it. Adult males, who desire to use freight trains for passage, should secure information from Agents as to whether they may be carried on trains which they desire to use, and if so, must purchase regular passage tickets. Only adult males will be carried. Baggage carried on freight trains cannot be checked, but must be delivered at station and be way-billed. Tickets will be sold only for freight trains which carry passengers and only to points where such freight trains are scheduled to stop; no stops will be made at any station for the special purpose of discharging or receiving passengers. Tickets will not be issued or sold beyond the first stopping point of passenger, nor in any case beyond the division terminal.

STOPPING TRAINS ON SIGNAL—Where trains are scheduled to stop only on signal, advance notice must be given, so that necessary arrangements may be made. Where trains are flagged only under certain specified conditions, as indicated by the various symbols shown in these tables, no refund will be made on unused portion of ticket if passenger elects to leave train at some station between initial station and the nearest point for which the train would have been flagged.

TELEGRAPH AND EXPRESS—The Postal Telegraph Cable Company and Railway Express Agency operate over the entire system of the Chicago Great Western Railroad Co.

TICKET OFFICES at stations are open thirty minutes before the departure of passenger trains, affording passengers ample time to procure tickets and have their baggage checked.



TIME TABLES



Minneapolis
St. Paul-Omaha
Des Moines
St. Joseph
Kansas City
and the
Southwest



**CHICAGO
GREAT WESTERN**



TIME TABLES



Chicago
Dubuque
Rochester
St. Paul
Minneapolis
and the
Northwest



**CHICAGO
GREAT WESTERN**