

The Mainstreeter

A second transcontinental train, *The Mainstreeter*, now operates between Chicago and the North Pacific coast via Helena, Mont. The equipment is conventional 6-section, 6-bedroom standard sleeping car, Pullman buffet-lounge, Tourist sleeping car, coaches and dining car. Connecting standard sleeper and coach operates between Portland and Spokane.

Condensed Schedule of The Mainstreeter

WESTBOUND - TRAIN 1 Read Down		EASTBOUND - TRAIN 2 Read Up	
Sun.	11:00 pm Lv. Chicago (CB&Q)	Ar.	8:00 am Wed.
Mon.	8:45 am Lv. St. Paul (NP)	Ar.	11:00 pm Tue.
"	9:20 am Lv. Minneapolis	Ar.	10:27 pm "
"	10:37 am Lv. St. Cloud	Ar.	9:07 pm "
"	11:10 am Lv. Little Falls	Ar.	8:32 pm "
Mon.	6:30 am Lv. Duluth	Ar.	12:35 am Wed.
"	6:45 am Lv. Superior	Ar.	12:19 am "
Mon.	11:56 am Lv. Staples	Ar.	7:45 pm Tue.
"	12:17 pm Lv. Wadena	Ar.	7:21 pm "
"	1:05 pm Lv. Detroit Lakes	Ar.	6:27 pm "
"	2:35 pm Lv. Fargo	Lv.	5:14 pm "
"	3:38 pm Lv. Valley City	Ar.	4:00 pm "
"	4:35 pm Lv. Jamestown	Ar.	3:05 pm "
"	6:35 pm Lv. Bismarck	Ar.	1:10 pm "
"	6:02 pm Lv. Mandan	Lv.	12:58 pm "
"	8:30 pm Lv. Dickinson	Lv.	9:10 am "
"	11:10 pm Lv. Glendive	Lv.	6:30 am "
Tue.	1:02 am Lv. Miles City	Lv.	4:25 am "
"	2:15 am Lv. Forsyth	Lv.	3:15 am "
"	4:55 am Lv. Billings	Lv.	12:55 am "
"	7:55 am Lv. Livingston	Lv.	10:15 pm Mon.
"	8:59 am Ar. Bozeman	Lv.	9:10 pm "
Tue.	12:15 pm Ar. Butte	Lv.	6:00 pm Mon.
Tue.	11:40 am Ar. Helena	Lv.	6:35 pm Mon.
"	3:20 pm Ar. Missoula	Lv.	3:00 pm "
"	8:15 pm Ar. Spokane	Lv.	8:10 am "
"	11:45 pm Ar. Pasco	Lv.	4:45 am "
Wed.	2:10 am Ar. Yakima	Lv.	2:30 am "
"	3:23 am Ar. Ellensburg	Lv.	1:20 am "
"	7:00 am Ar. Portland	Lv.	9:30 pm Sun.
"	7:20 am Ar. Tacoma	Lv.	9:10 pm "
"	7:20 am Ar. Seattle	Lv.	9:30 pm "

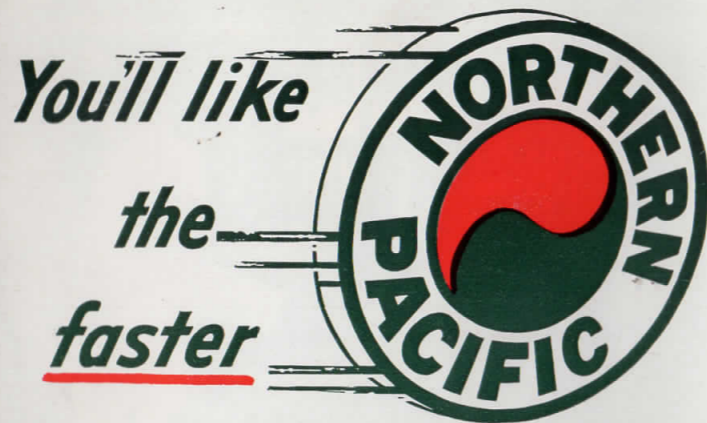
For travel information and reservations consult your favorite travel or ticket agent, your nearest Northern Pacific representative, or write

G. W. RODINE
Passenger Traffic Manager
Northern Pacific Railway
St. Paul 1, Minn.

Route of the *faster*
NORTH COAST LIMITED

and
The Mainstreeter

NORTHERN PACIFIC RAILWAY



NORTH COAST LIMITED



CHICAGO . . . TWIN CITIES
. . . NORTH PACIFIC COAST

You'll like the faster NORTH COAST LIMITED

THE NORTH COAST LIMITED's new fast schedule now makes travel between Chicago and the Pacific Northwest more convenient than ever.

You can speed along one of America's most scenic mountain routes in the streamlined comfort and luxury that has made this Northern Pacific train famous.

Adding to your enjoyment are the sparkling dining cars where you'll find the "famously good" food unsurpassed and the service tops.

If you're traveling by coach you'll enjoy the buffet lounge which provides club car accommodations with light snacks and beverages. Or, if you're a Pullman passenger you'll find the observation lounge an elegant and restful club on wheels.

As soon as they can be built, three beautiful new Vista-Dome cars will be added to each train. When these luxurious cars go into service, travelers will be able to enjoy even more fully the grandeur of Northern Pacific's scenic route.

WESTBOUND—Train 25

Lv. Chicago (CB&Q)	11:30 am	Sun.
Lv. St. Paul (NP)	6:30 pm	"
Lv. Minneapolis	7:00 pm	"
Lv. Duluth	5:05 pm	"
Lv. Superior	5:17 pm	"
Lv. Staples	9:21 pm	"
Lv. Fargo	11:25 pm	"
Lv. Jamestown	1:06 am	Mon.
Lv. Bismarck	2:49 am	"
Lv. Mandan (MST)	2:11 am	"
Lv. Dickinson	4:00 am	"
Ar. Glendive	5:57 am	"
Ar. Miles City	7:29 am	"
Ar. Forsyth	8:27 am	"
Ar. Billings	10:23 am	"
Ar. Livingston	12:30 pm	"
Ar. Bozeman	1:30 pm	"
Ar. Helena	4:05 pm	Mon.
Ar. Butte	3:58 pm	Mon.
Ar. Missoula	6:20 pm	"
Ar. Spokane (PST)	10:45 pm	"
Ar. Pasco	1:30 am	Tue.
Ar. Yakima	3:20 am	"
Ar. Ellensburg	4:26 am	"
Ar. Portland	7:30 am	"
Ar. Tacoma	8:00 am	"
Ar. Seattle	8:00 am	"

EASTBOUND—Train 26

Lv. Seattle	1:15 pm	Sun.
Lv. Tacoma	12:55 pm	"
Lv. Portland	3:00 pm	"
Lv. Ellensburg	4:44 pm	"
Lv. Yakima	5:50 pm	"
Lv. Pasco	7:45 pm	"
Lv. Spokane	10:30 pm	"
Lv. Missoula (MST)	5:00 am	Mon.
Lv. Helena	7:10 am	Mon.
Lv. Butte	7:17 am	Mon.
Lv. Bozeman	9:56 am	"
Lv. Livingston	10:51 am	"
Lv. Billings	12:58 pm	"
Lv. Forsyth	2:49 pm	"
Lv. Miles City	3:42 pm	"
Lv. Glendive	5:15 pm	"
Lv. Dickinson	7:15 pm	"
Lv. Mandan (CST)	10:07 pm	"
Lv. Bismarck	10:19 pm	"
Lv. Jamestown	12:07 am	Tue.
Lv. Fargo	1:47 am	"
Ar. Staples	3:44 am	"
Ar. Superior	7:39 am	Tue.
Ar. Duluth	7:55 am	"
Ar. Minneapolis	6:10 am	Tue.
Ar. St. Paul	6:40 am	"
Ar. Chicago (CB&Q)	1:45 pm	"

ACCOMMODATIONS—The faster **NORTH COAST LIMITED** equipment is made up of modern, light-weight, matched cars—all-room Pullmans with duplex roomettes, roomettes, bedrooms and compartments, luxurious Pullman-Observation car, "Day-Nite" and day coaches, coach-buffet-lounge car and dining car. All coach seats are reserved in advance at no extra charge.

Luxurious Accommodations in All-Room Pullmans and De Luxe Coaches

(See pictures on inside pages)

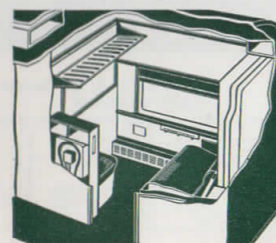
Two types of luxury coaches provide North Coast Limited travelers with real comfort at the lowest cost: The day coach for local travel, and the "Day-Nite" coach for longer trips. All coaches have the famous "Sleepy Hollow" contoured seats, adjustable to six positions. Day coach seats are equipped with comfortable footrests.

Leg and footrests and more room between seats permit reclining almost at full length in the "Day-Nite" coach. All coach seats are reserved.

For overnight travel, all-room Pullmans provide the most modern and comfortable accommodations available.

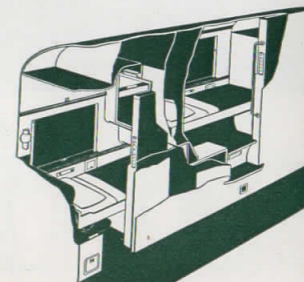
THE ROOMETTE

Gives complete privacy for the single occupant. Full length, premade beds pull out from the walls and are ready for rest, day or night. Ample luggage space and large mirrors add to traveling comfort.



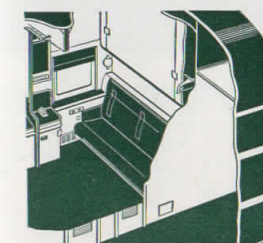
THE DUPLEX ROOMETTE

Slightly smaller than the roomette but retains most of the advantages. Both have air conditioning control, private toilet and lavatory facilities; sliding doors or zipper curtains as desired.



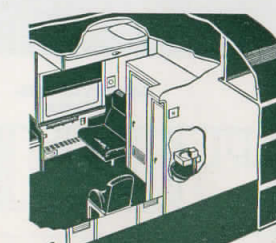
THE DOUBLE BEDROOM

Designed for two adults, this room has a comfortable, full length sofa which converts into a restful bed. An upper berth pulls down. Two double bedrooms may be reserved together by folding back partitions; Ideal for families or groups.



THE COMPARTMENT

Deluxe, roomy accommodation for two or three persons. Lavatory and toilet are enclosed in a separate room and an enclosed wardrobe is provided. The compartment also may be reserved en suite with a double bedroom.





▲ LUXURIOUS OBSERVATION-LOUNGE



▲ THE COMPARTMENT



▲ "FAMOUSLY GOOD" MEALS IN THE DINER



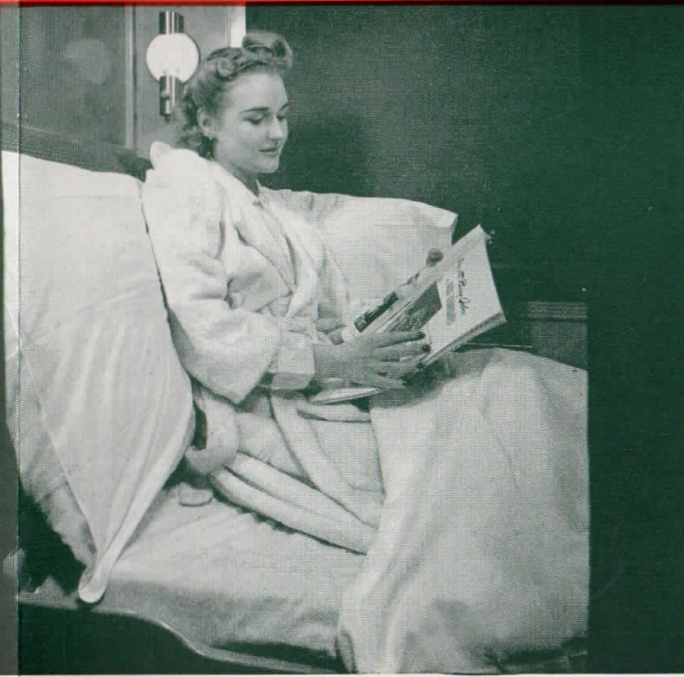
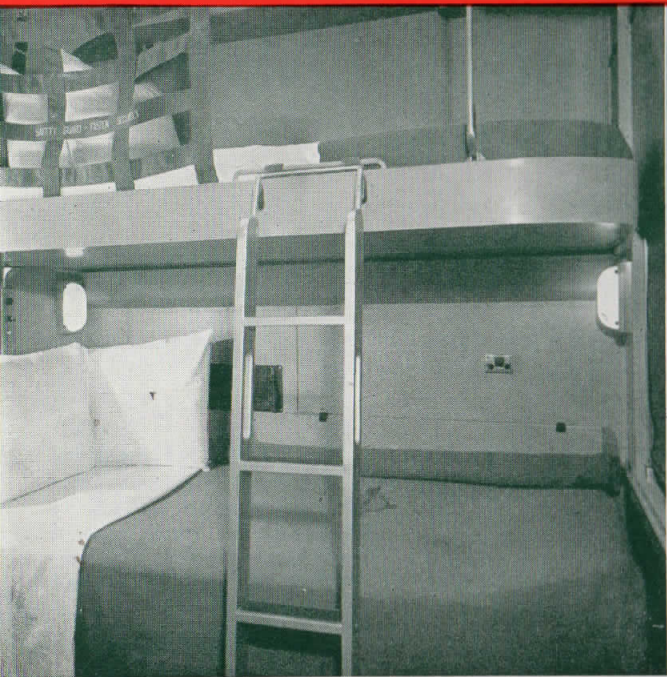
▲ DE LUXE COACH — ALL SEATS RESERVED

▼ THE DOUBLE BEDROOM

▼ THE ROOMETTE

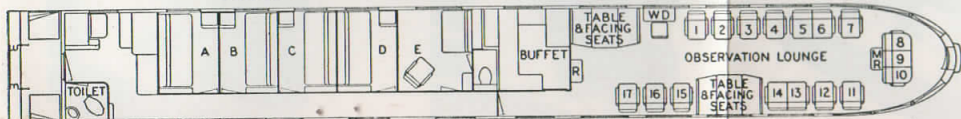
▼ THE DUPLEX ROOMETTE

▼ THE BUFFET-LOUNGE-COACH EXPRESSLY FOR COACH PASSENGERS



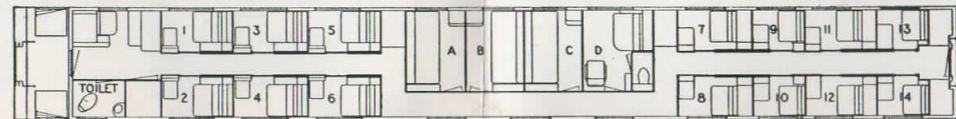
OBSERVATION-LOUNGE

A, B, C, D—Double Bedrooms
R—Radio WD—Writing Desk
E—Compartment
MR—Magazine Rack



PULLMAN

1, 2, 3, 4, 5, 6—Roomettes
7, 8, 11, 12—Upper Duplex Roomettes
9, 10, 13, 14—Lower Duplex Roomettes
A, B, C—Double Bedrooms
D—Compartment



BUFFET-LOUNGE COACH

WDR—Women's Dressing Room
MDR—Men's Dressing Room
CS—Conductor's Section
WD—Writing Desk
R—Radio
S—Settee
T—Table

