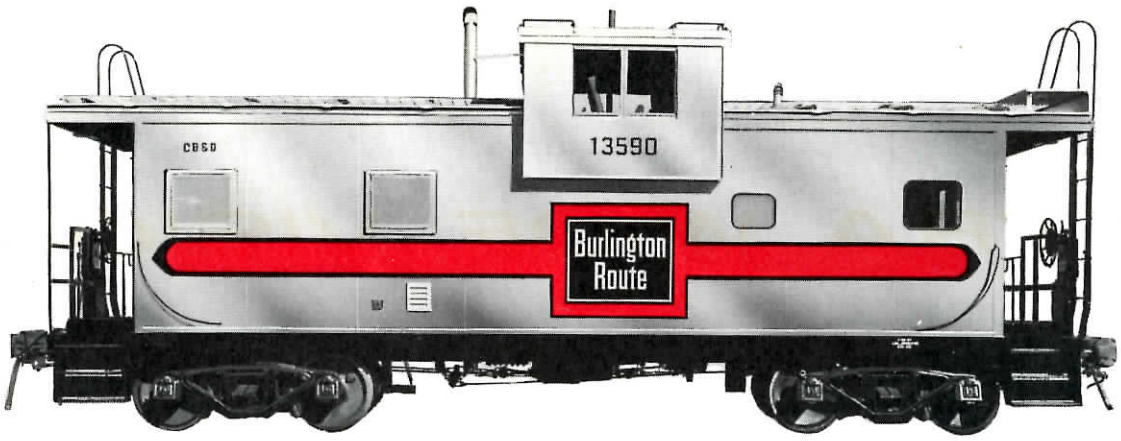


# INTERNATIONAL CABOOSE

*EXTRA WIDE VISION*





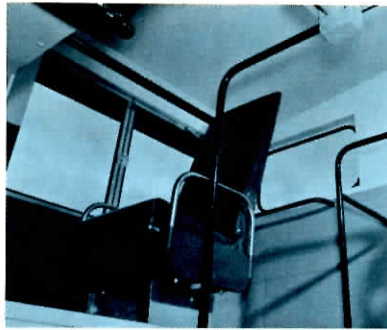
Today's trend toward higher, wider freight cars imposes severe restrictions on the visibility afforded trainmen riding in conventional cabooses.

In most instances they are forced to lean dangerously far out of the cupola windows.

International Extra Wide Vision Caboose Cars completely overcome this handicap, within AAR clearance limits.

Not only do trainmen ride in greater comfort . . . they face forward with no need to lean to the side or ever stick their heads out of the window.

They get a picture window view of the train ahead — a safety factor of immeasurable value to any railroad.



## **EXTRA WIDE VISION**

The popularity of the International Extra Wide Vision Caboose is evident by the number of roads that have purchased them. Their growing numbers include the following:

DULUTH, MISSABE AND IRON RANGE

ST. LOUIS AND SAN FRANCISCO

CHICAGO, ROCK ISLAND AND PACIFIC

ST. LOUIS SOUTHWESTERN

DELAWARE AND HUDSON

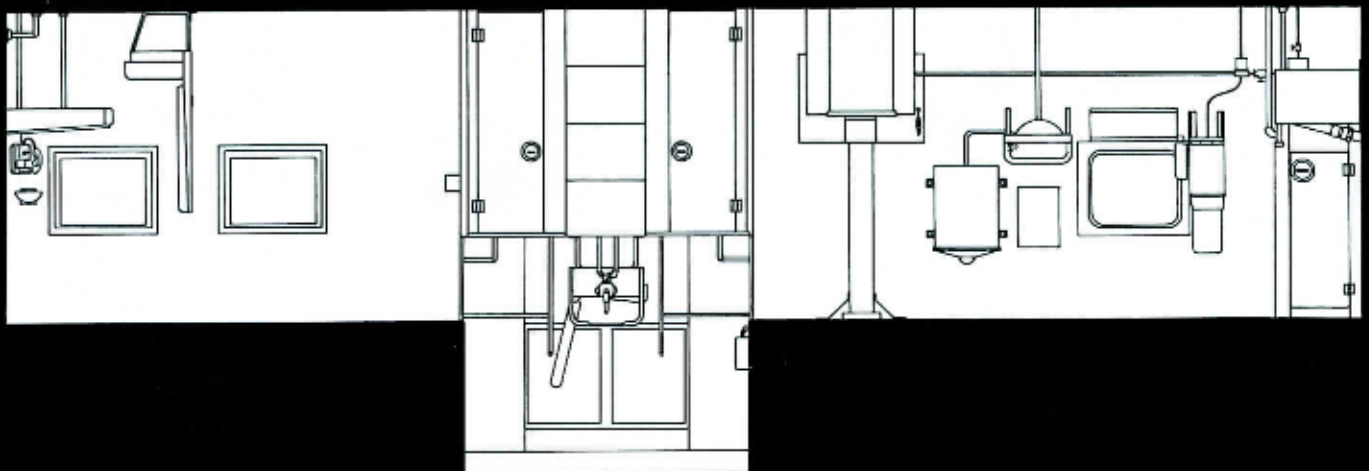
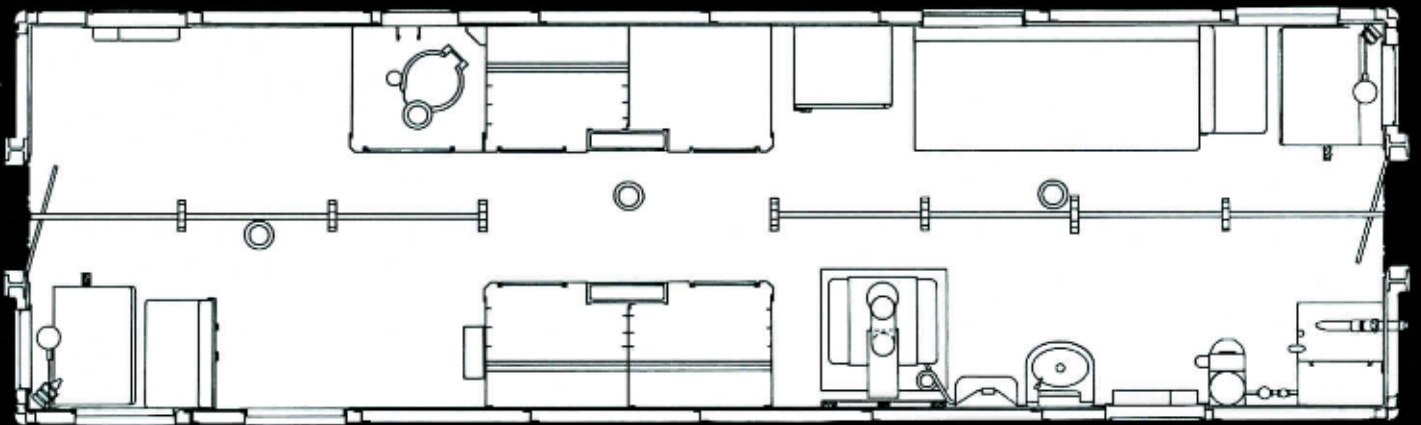
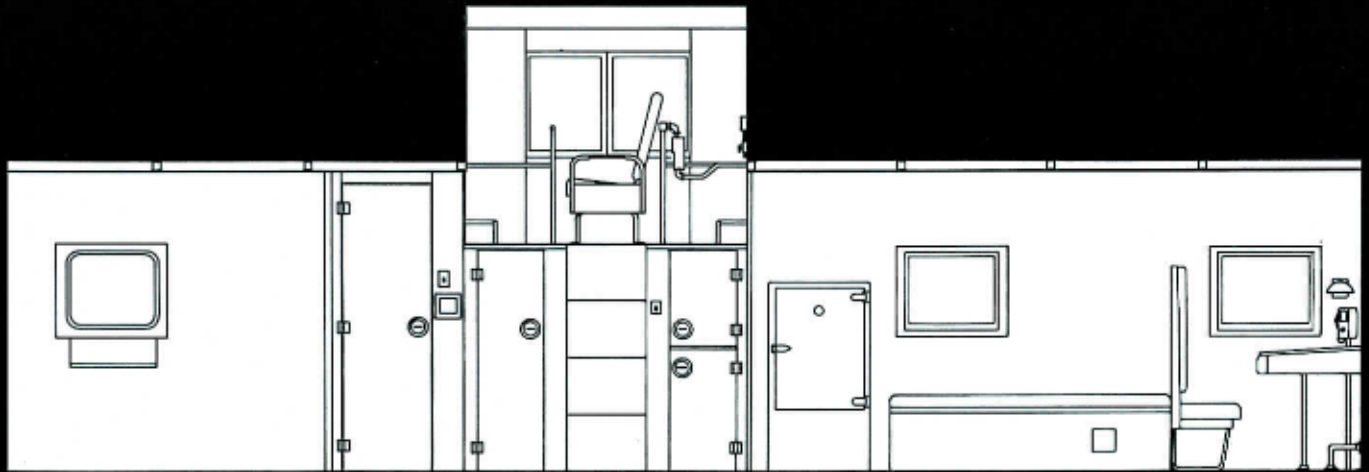
McCLOUD RIVER

SEABOARD AIRLINE

CHICAGO, BURLINGTON AND QUINCY

GULF, MOBILE AND OHIO

SANTA MARIA VALLEY



## **INTERIOR APPOINTMENTS**

(OPTIONAL)

**CONDUCTOR'S DESK:** Padded front with drawer or hinged top.

**CONDUCTOR'S CHAIR:** Stationary or revolving type . . . all fully adjustable. High back for comfort. Foot rest.

**CUPOLA SEATS:** High safety back with arm rests and seat belts. Equipment includes foot rests, hand holds and crossover bars.

**WATER SYSTEM:** For flushing hoppers, water coolers, sinks, lavatories and hot box water supply.

**HEATING SYSTEM:** Choice of oil, propane or coal heat affording ample comfort for crew. Fuel storage is sufficient to eliminate frequent servicing.

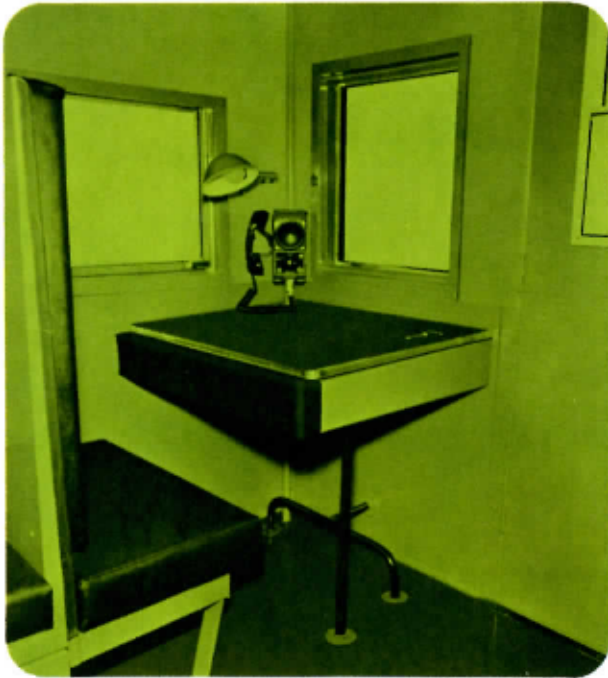
**LIVING FACILITIES:** Bunks with cushions, sink, stove, cabinets, refrigerator, water cooler and toilet.

**ELECTRICAL SYSTEM:** Self-contained with alternator, batteries, marker lights, track lights, radio, desk lights and ceiling lights.

**NOTE:** Interior arrangement and equipment available to suit transfer, switching, assigned or pool service.







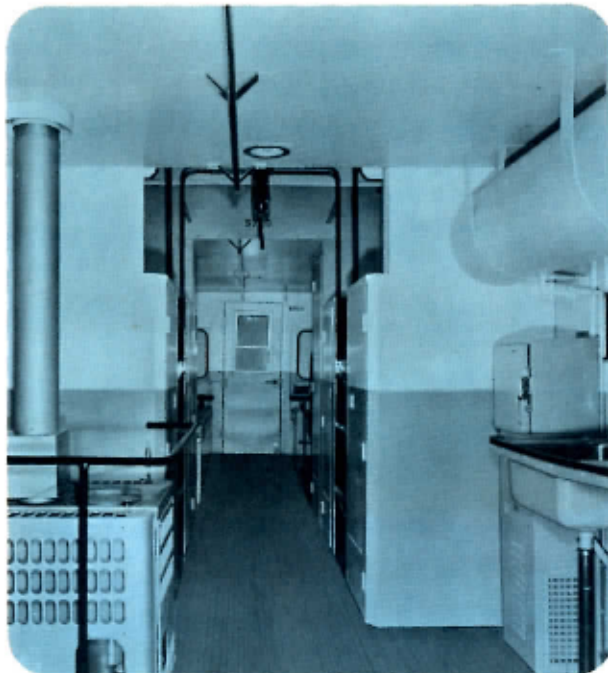
#### **Conductor's "Office"**

Hingetop desk has padded front, foot rest and rubber-filled seat cushion and high back for safety and comfort. Convenient radio and desk light. Side window may be raised at will.



#### **Typical Cupola Seating**

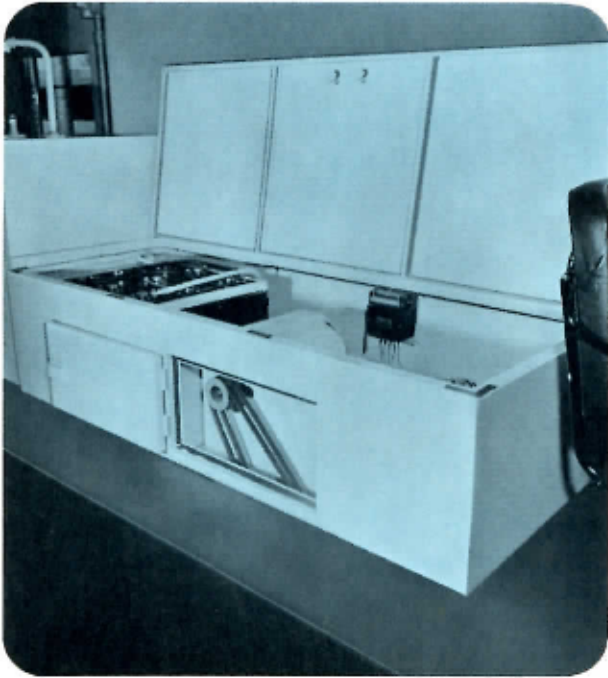
Note convenient arrangement of radio hand set, safety hand holds for cupola crossover, and horizontal sliding windows. Steps to cupola are recessed with safety grab in easy reach.



### **COMPLETE FACILITIES FOR EFFICIENT CREW WORK AND LIVING COMFORT**

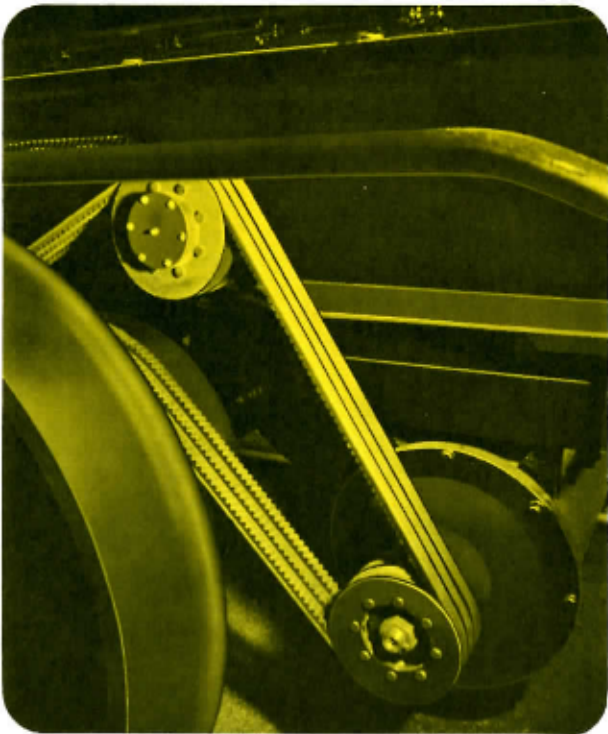
#### **Interior Arrangement**

Features include laminated edge grain flooring, oil burning stove for heating and cooking, compact refrigerator, stainless steel sink, overhead water supply with outside fill. Note safety railing around stove, overhead safety grab, cupola crossover grabs, beveled locker corners and recessed locks on locker doors.



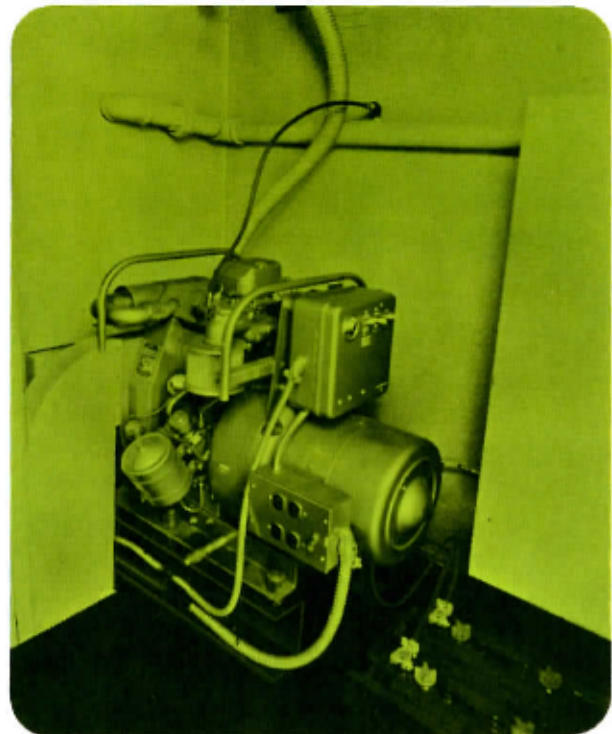
### **Generator Systems**

One of three optional generator systems. This one features controls and battery in seat box with separate belt compartment for eliminating snow in seat box. Axle drive mechanism with cog provides power.



### **Body Hung Generator**

Features axle drive using three cog belts and tension drive.



### **Propane Motor Generator Set**

Comes complete with battery.



***EXTRA WIDE VISION***

**INTERNATIONAL CAR CORP.** 

835 ENGLEWOOD AVENUE : BUFFALO, NEW YORK 14223 : Phone: 836-4414