

carload freight




WHERE YOU WANT IT

WHEN YOU WANT IT

WITH B&O's SENTINEL SERVICE



B&O

Sentinel
SERVICE

SIDING TO SIDING DEPENDABILITY

EX W	10-5 H 13-2
EW	9-5 H 13-10
IL	40-6
IW	9-2
IH	10-0
CU FT	3715

M55c

BLT-8-45

BALTIMORE & OHIO RAILROAD
TRUST SERIES N
BANK AND TRUST COMPANY
OWNER AND LESSOR

Sentinel
FAST FREIGHT SERVICE

BALTIMORE & OHIO

466060

CAP. 10000
LD. LIT. 32000
LT WT. 45200

Dependable freight schedules from siding to siding a proved and accomplished fact



On March 3, 1947, a system was introduced by the Baltimore & Ohio Railroad to bring a new standard of efficiency to the movement of carload freight. It was named Sentinel Service, and over the years has proved so successful that today its reputation for on-time performance is known to shippers from coast to coast.

HOW SENTINEL SERVICE OPERATES

Based on published cut-off and latest placement times, synchronized with road schedules, Sentinel Service has superseded mere schedules from city to city. It has provided, instead, dependability from siding or team track at origin to siding or team track at destination or interchange facilities.

When Sentinel Service is used, shippers and receivers know when cars will be available for unloading. Plans can be made with confidence, promotions accurately scheduled, production smoothly maintained. Sentinel cars are under watchful supervision from the time they are received by the B&O until the time the B&O delivers them.

A SPECIAL PROVISION FOR SCHEDULE INTERRUPTIONS

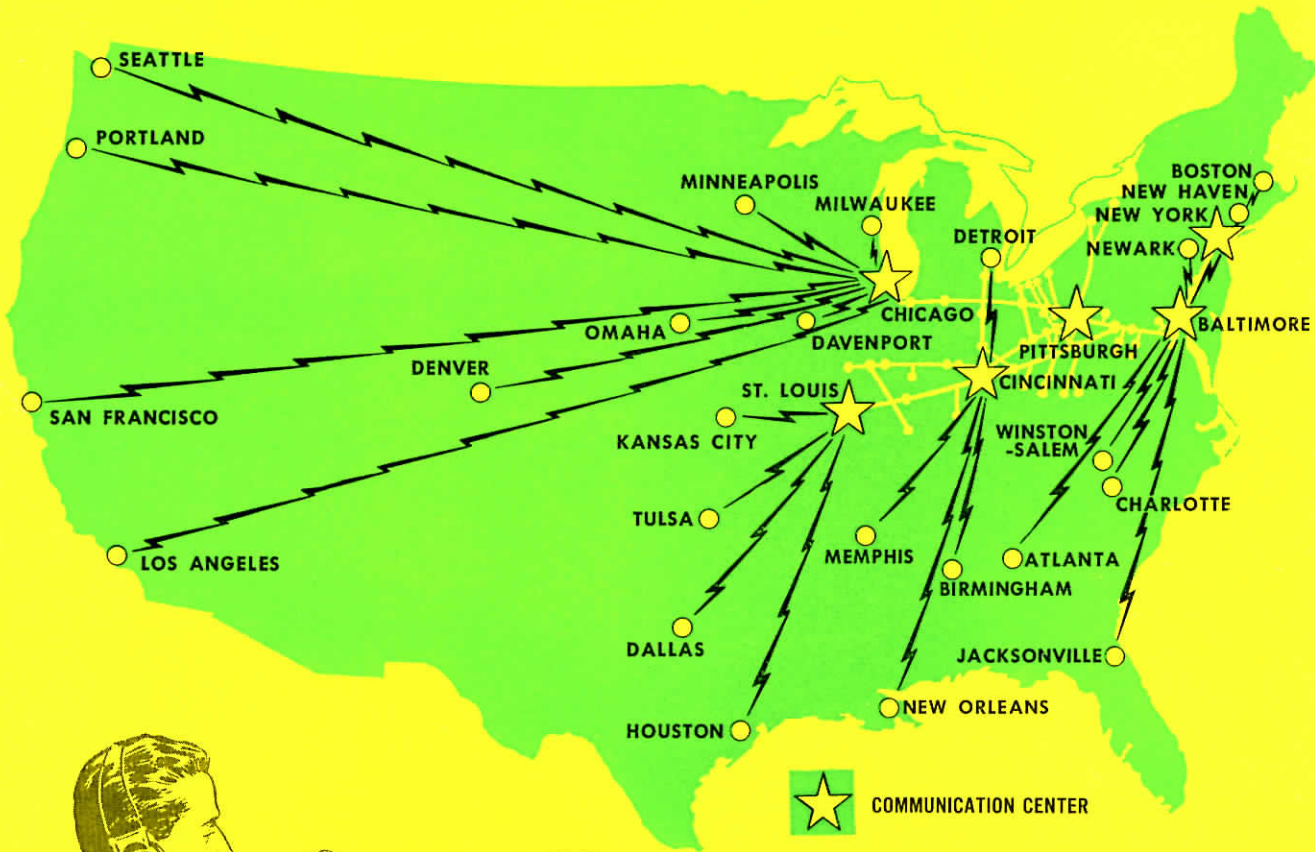
Another important feature of Sentinel Service is Automatic Records. Through it, both shipper and receiver are immediately notified if the schedule of a Sentinel car is interrupted for any reason. And they are again advised when the car is reforwarded. Automatic Records save you time and money when emergencies arise.

OFF-LINE COMPANIES BENEFIT, TOO!

Even if your business is not located on the B&O, you can secure the advantages of Sentinel Service. It is applied to your cars while they are actually on Baltimore & Ohio lines. *Ask our man!*

Communications SPANNING THE NATION

KEEP YOU ADVISED ON SENTINEL CARS



Modern communications on the B&O system are extended to its off-line agencies throughout the nation. The above map shows the connections of off-line agencies with communications centers on B&O lines. This network facilitates efficient service on all B&O freight; and because of it the "Automatic Records" feature of Sentinel Service is made possible.

Wherever you are on B&O lines—and even if you are a thousand miles or more away from a point of interchange, you need never lose contact with your Sentinel car while it is in B&O hands. Should the schedule of a Sentinel car be interrupted, both shipper and receiver are informed quickly—and again notified when the car is reforwarded.

Guesswork is thus eliminated, time and money frequently saved, and operations made generally smoother.

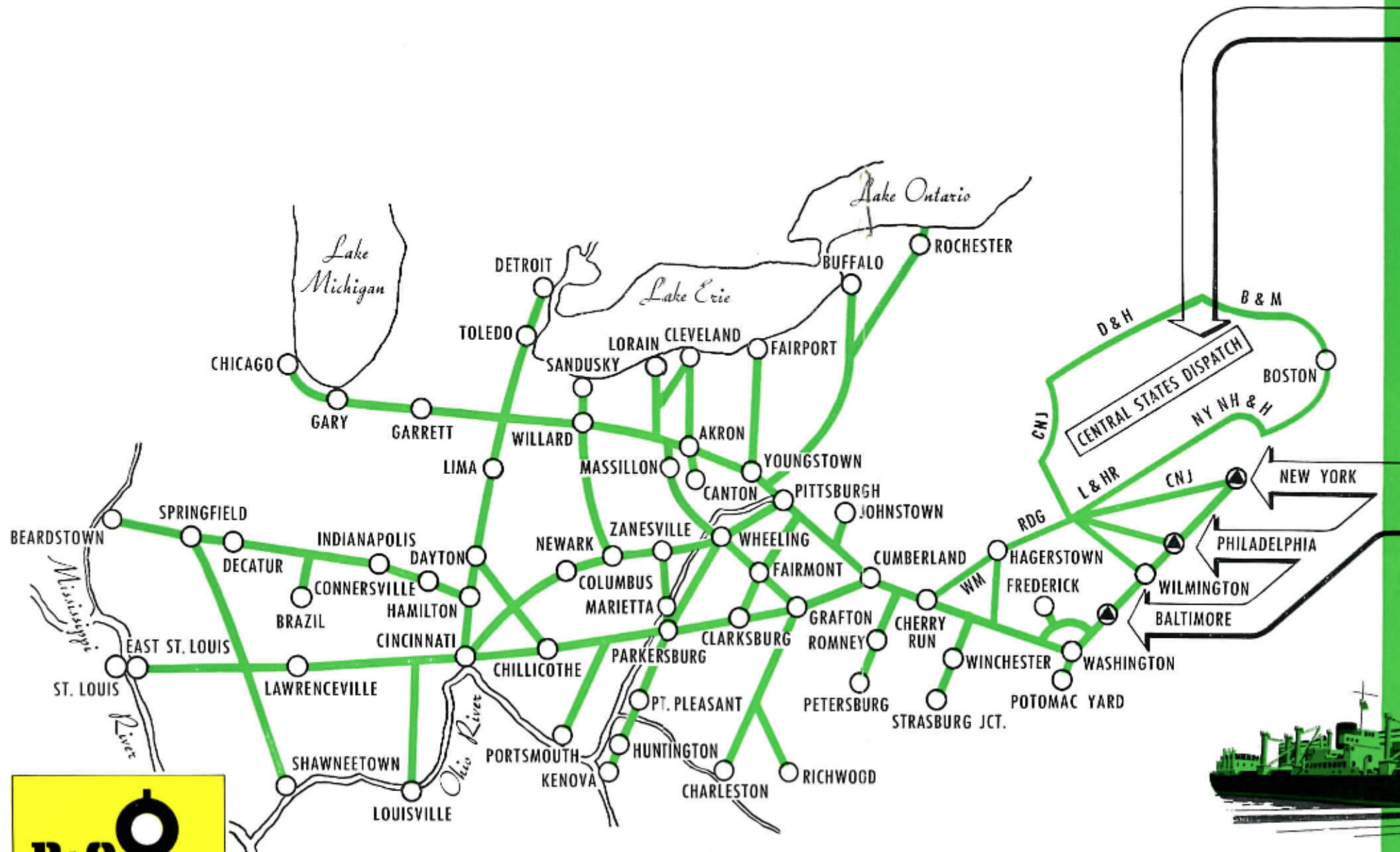
Sentinel Service origins and destinations with DAY-DELIVERY SCHEDULE

FROM	TO	Akron, O.	Baltimore, Md.	Buffalo, N. Y.	C-S-D* Cherry Run, W. Va.	Chicago, Ill.	Chillicothe, O.	Cincinnati, O.	Clarksburg, W. Va.	Cleveland, O.	Columbus, O.	Connersville, Ind.	Dayton, O.	Decatur, Ill.	East St. Louis, Ill.	Fairmont, W. Va.	Hamilton, O.	Huntington, W. Va.	Indianapolis, Ind.	Lima, O.	Louisville, Ky.	Newark, O.	New York, N. Y.	Parkersburg, W. Va.	Philadelphia, Pa.	Pittsburgh, Pa.	Potomac Yard, Va.	Rochester, N. Y.	Springfield, Ill.	St. Louis, Mo.	Toledo, O.	Washington, D. C.	Wheeling, W. Va.	Wilmington, Del.	Youngstown, O.	
Akron, O.			3	3	2	2																	3		3	2	3	3	3		2	3		3		
Baltimore, Md.		2		3		3	3	3	2	2	3		3	3	3	2	3	3	3	3	3	3	1	2	1	2	1	3	3	3	3	1	2	1	2	
Buffalo, N. Y.		2	3			3		3		2	3				4			3			3	3	3	3	2	3		4	4		3	2		2		
C-S-D* Cherry Run, W. Va.		1				2	2	2	1	1	2		2	2	2	1	2	2	2	2	2	2		1		1			2	2	2		2		1	
Chicago, Ill.		2	3	3	2			2	3	2			2				2	3	2	2	2	2	3	3	3	2	3	3		2	2	2	3	3	2	
Chillicothe, O.		3	2				2						2	3	2		2	2	2	2	2	2	3	3	3	3	3		2	2		3	3	3		
Cincinnati, O.		3	3	2	2	1		2		1	1	1	1	2		1	2	1	1	1	1	1	3	2	3	2	3	3	1	2	1	3	2	3		
Clarksburg, W. Va.		3	2	3			2							3							2	3	2	3	3	3	3		3	3	3	1				
Cleveland, O.		3	2	2													3					3	3	3	3	3	3	3		2	3	3	1	3		
Columbus, O.		3	2	2			2						2			3				2	3	3	3	1	3	2	2	2	2	3	1	3		3		
Connersville, Ind.		3	2			1										1						3	3	3	3					3	3		3			
Dayton, O.		3	2	2		1								3							2	3	3	3	3	3	3	1	3	1	3	3	3			
Decatur, Ill.		3	2		2	1						1					1	3	1			3	2	3	3					3	3		3			
East St. Louis, Ill.		3	3	2		2	1	3		2		2				2	3		2		2	3	2	3	2	3	3			3	3	3	3			
Fairmont, W. Va.		3	1																			3	3	3	3					3	3		3			
Hamilton, O.		3	2	3		1								3			3				2	3	3	3	3	3		1	3	2	3	3		3		
Huntington, W. Va.		3	3	3	2	3	2	2		2	3		2	2	3		2		2	2	2	3	3	2	3	3	3	2	3	3	3	3	2	3	3	
Indianapolis, Ind.		3	2			1						1	1			1	3					3	3	3	3	3	1			3	3		3			
Lima, O.		3	2	2		1								3							2	3	3	3	3	3	2	3	1	3	3		3			
Louisville, Ky.		3	3	2		1	3		2			2				2	3		2		2	3	2	3	2	3	3	2	2	2	3	3	3			
Newark, O.		3	3	2	2	1							2			3					2	3	3	3	3	3	2	2	2	3	3	1	3			
New York, N. Y.		2	†			3	3	3	2	2	3	3	3	3	3	2	3	3	3	3	3	3	2		2	1		3	3	3	1	2		2		
Parkersburg, W. Va.		2	3	1	3		2					2	2	2		2			2	2	2	2	2	2	2	2	2	2	2	3	2	2	3	2	1	2
Philadelphia, Pa.		2	1	3		3	3	3	2	2	3		3	3	3	2	3	3	3	3	3	3	2		2	1	3	3	3	3	1	2		2		
Pittsburgh, Pa.		1	2	2	1	2		2	2	1	2				3						2	2	2	2	2	2	2	2	2	3	3	2	2	1	2	
Potomac Yard, Va.		2	1	3		3	3	3	2	2	3		3	3	3	2	3	3	3	3	3	3	1	2	1	2		3	3	3	3		2	1	2	
Rochester, N. Y.		2	3			3		3		2	3				4						3	3	3	3	2	3		4	4		3	2		2		
Springfield, Ill.		3	3	4	2		2	1		3	2		1				1	3	1	2		2	3	2	3	3	3	4			2	3	2	3	3	
St. Louis, Mo.			3	3	2		2	1	3		2		2				2	3		2		2	3	2	3	2	3	3		3	3	3	3		3	
Toledo, O.		2	3		2			1		2			1	2		1	3		1	2	2	3	3	3	2	3		2	2		3	2	3	2		
Washington, D. C.		2	1	3		3	3	3	2	2	3		3	3	3	2	3	3	3	3	3	3	1	2	1	2		3	3	3	3		2	1	2	
Wheeling, W. Va.			3	2	1	2		2	1		1				3						2		2	1	3		3	1	2	2	2	3	2	3	3	
Wilmington, Del.		2	1			3	3	3	2	2	3			3	3	2					3	3	3	2		2	1		3	3	3	1	2		2	
Youngstown, O.		3	3	2	2												3						3	3	3	3	3	3		2	3		3		3	

*Central States Dispatch Route, serving Eastern Pennsylvania, Delaware, New Jersey, New York State and New England via Cherry Run, W. Va., Gateway.
†Camden District only—other districts one day longer.

Today, 32 cities (with more than 600 point of origin to destination services) are served directly by Sentinel Service. The chart shows the road

schedules between Sentinel cities. Cut-off and latest placement times are available from B&O representatives. *Ask our man!*



CENTRAL STATES DISPATCH ROUTE

This convenient route coordinates the services of several railroads into one great line, connecting with the Baltimore & Ohio system at Cherry Run, W. Va. It provides an efficient rail link for commerce between the industries and markets of the West and Southwest and those of the Northeast. Sentinel Service applies to shipments routed CSD while on B&O lines.

SENTINEL SERVICE AT THREE GREAT B&O PORTS

Routing merchandise via the Baltimore & Ohio gives importers and exporters extra benefits. Access



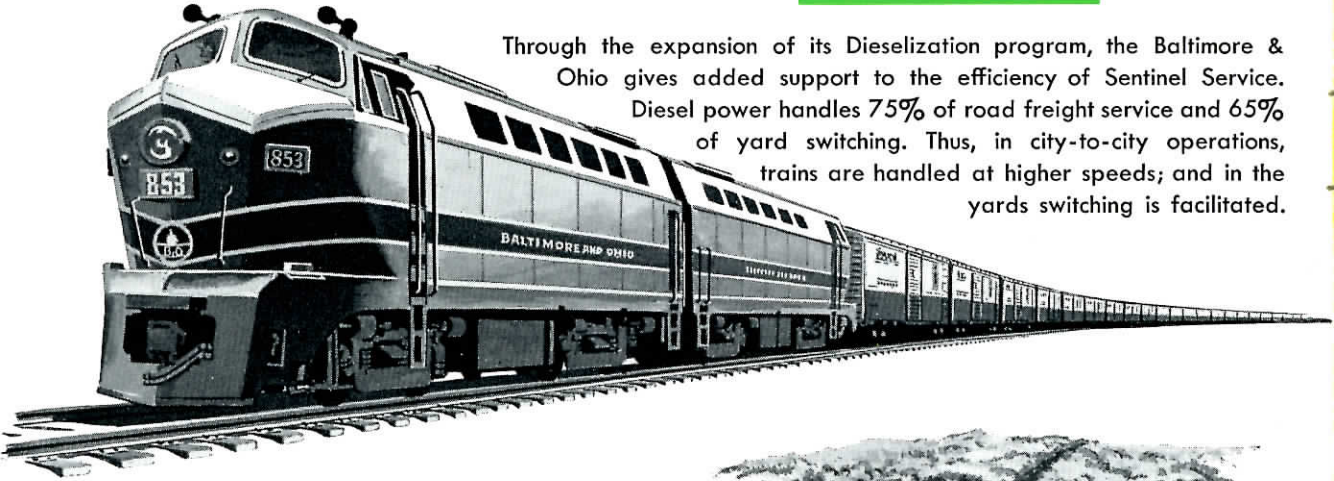
is gained to America's three greatest ports—New York, Philadelphia and Baltimore—with their specialized facilities; and the benefits of Sentinel Service are received. Shippers sending goods into and out of the country find Sentinel Service invaluable in maintaining a smooth flow of cargo.



Why **SENTINEL SERVICE**

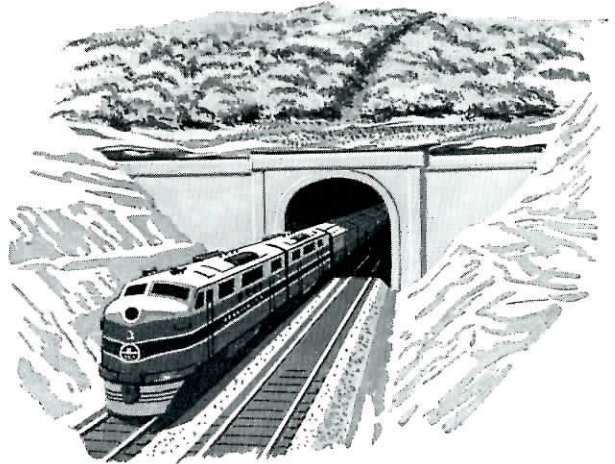
DIESELIZATION

Through the expansion of its Dieselization program, the Baltimore & Ohio gives added support to the efficiency of Sentinel Service. Diesel power handles 75% of road freight service and 65% of yard switching. Thus, in city-to-city operations, trains are handled at higher speeds; and in the yards switching is facilitated.



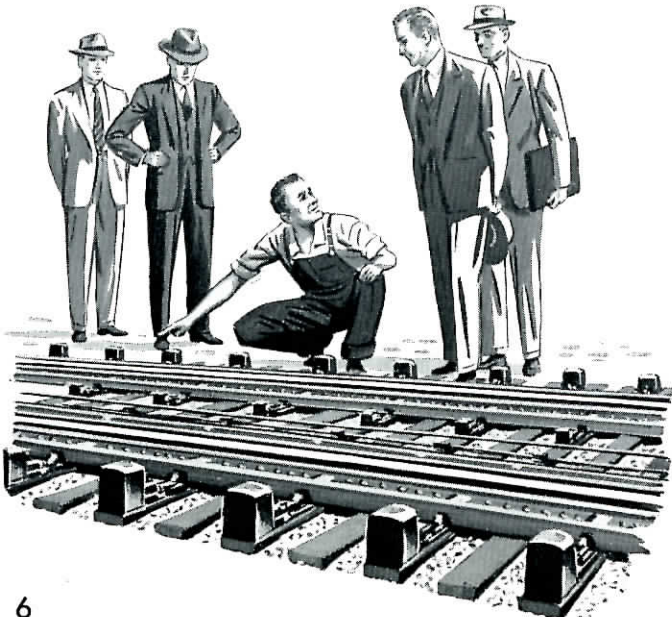
\$4 MILLION TUNNEL

Three miles east of Clarksburg, a new tunnel through the West Virginia mountains speeds traffic on B&O's main line between the Atlantic Seaboard and Cincinnati, St. Louis, Louisville and Indianapolis. 3300 feet long and accommodating double tracks, it plays an important part in assuring the dependability of Sentinel Service.



TRAINING TRIPS

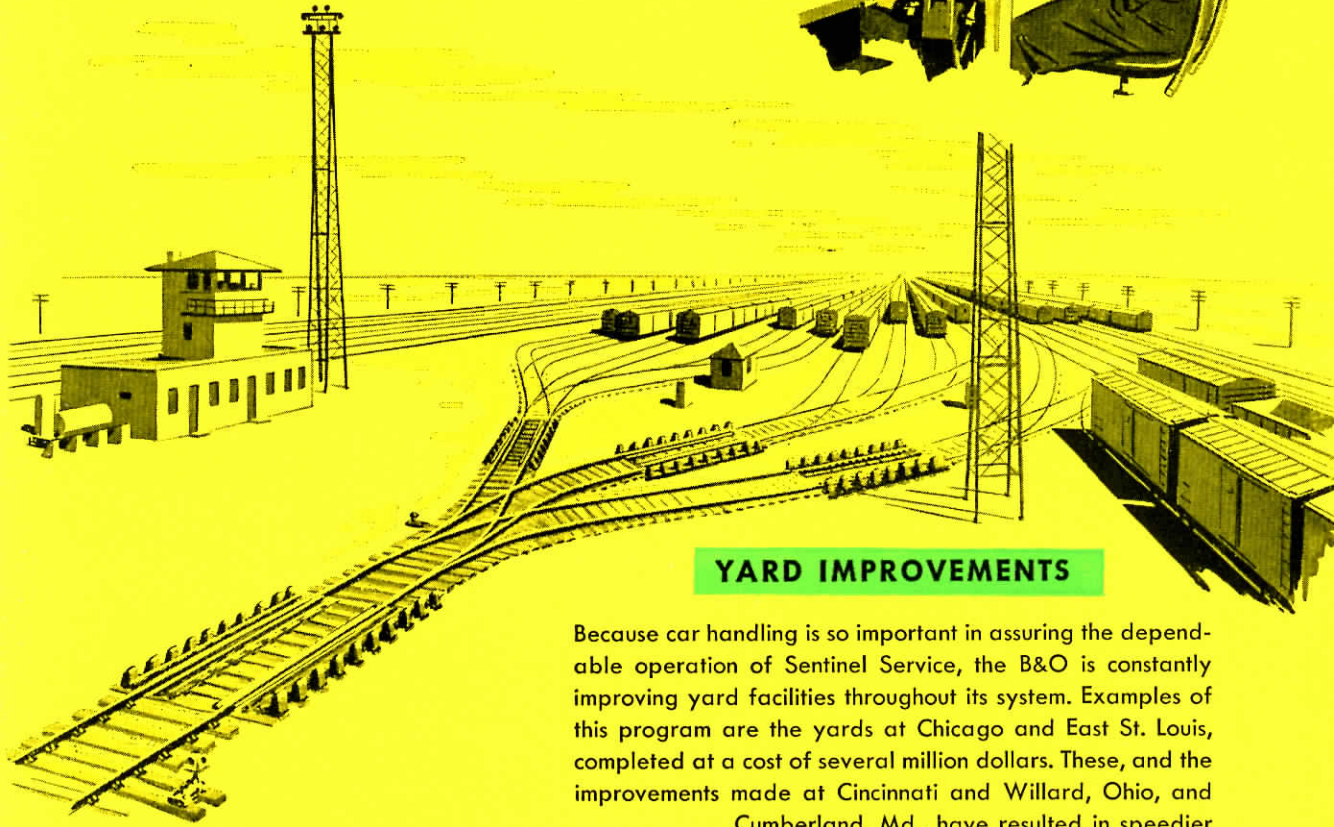
Shippers have learned the value of calling in B&O representatives, for these men are steeped in the know-how of efficient shipping. They've actually been over B&O lines, seen the operations in yards, terminals and offices. They have studied under departmental officers the many phases of shipping you will wish to know about. They're up to the minute on schedules and handling, and they are keeping current on transportation topics of importance. A Sentinel Service salesman knows his "merchandise"!



is better than ever!

STREAMLINED CONTROL TOWERS

in B&O's modern yards are equipped with Teletypes. Microphones connected with a public address system provide instant communication between yardmaster and crews.



YARD IMPROVEMENTS

Because car handling is so important in assuring the dependable operation of Sentinel Service, the B&O is constantly improving yard facilities throughout its system. Examples of this program are the yards at Chicago and East St. Louis, completed at a cost of several million dollars. These, and the improvements made at Cincinnati and Willard, Ohio, and Cumberland, Md., have resulted in speedier service to shippers and receivers. Installation of car retarders aids in the smooth movement of traffic through classification terminals.

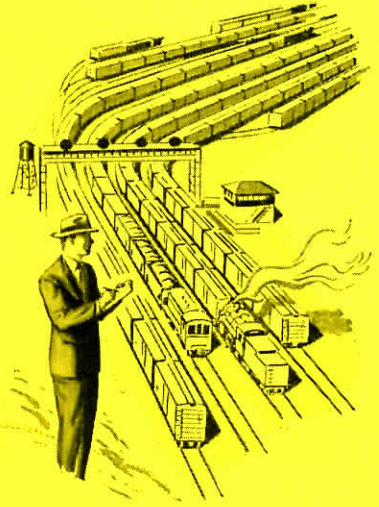
MODERN BRIDGES

on the B&O are typified by Point Pleasant Bridge handling traffic in the teeming Ohio River Valley.



CAREFUL FREIGHT HANDLING

is everyone's business on the B&O. A continuing B&O program stresses the safe, speedy and economical movement of freight.



BARR YARD, CHICAGO

CONE YARD, E. ST. LOUIS

These are examples of modern yards on B&O, which handle thousands of cars daily, utilizing every modern aid to efficient handling.



B&O TRAFFIC OFFICES

on and off-line, aided by modern communications, supply receivers with up-to-the-minute information on car movements. Inquiries on shipping problems are handled promptly and courteously.

Where you want it —

when you want it!



Sentinel Service
puts your carloads
on the spot
and keeps you off

Ask our man!

BALTIMORE & OHIO RAILROAD



Constantly *doing things*—better!