



Spokane, Portland & Seattle Railway with Spokane, Washington in the background.



OCTOBER 30, 1966
Subject to change without notice



The Northwest's Own Railway

THROUGH SERVICE

VIA

NORTH COAST
LIMITED



EMPIRE
BUILDER



TIME TABLES

Standard Time

TRAVEL THE
COLUMBIA RIVER
SCENIC ROUTE
THROUGH THE
CASCADE RANGE

OCTOBER 30, 1966
Subject to change without notice



The Northwest's Own Railway

THROUGH SERVICE

VIA

NORTH COAST
LIMITED



EMPIRE
BUILDER



TIME TABLES

Standard Time

TRAVEL THE
COLUMBIA RIVER
SCENIC ROUTE
THROUGH THE
CASCADE RANGE



SPOKANE, PORTLAND AND SEATTLE RAILWAY SYSTEM

S. P. & S. RY.—OREGON TRUNK RY.—OREGON ELECTRIC RY.—(Subsidiaries of Northern Pacific and Great Northern Railways)

TRANSCONTINENTAL TRAIN SERVICE—BETWEEN PORTLAND, PASCO AND EAST

SPOKANE, PORTLAND AND SEATTLE, NORTHERN PACIFIC AND CHICAGO, BURLINGTON AND QUINCY RAILWAYS

West Bound, Read Down			Eastbound, Read Up		
Daily The Main-street C.B. & Q. No. 47	Daily North Coast Ltd. No. 25	Chicago, Burlington and Quincy Railway (Central Time)	Mil. f'm P't	Daily North Coast Ltd. No. 26	Daily The Main-street C.B. & Q. No. 48
10.30	1.15	Lv Chicago (Union Station).....Ar	2327	2.00	7.40
11.09	a 1.52	Lv Aurora.....Ar	2289	a 1.15	6.40
1.12	3.26	Lv Savanna.....Ar	2182	11.39	4.35
4.24	5.36	" LaCrosse.....Ar	2030	9.21	1.52
7.15	8.00	Ar St. Paul (Union Station).....Lv	1900	7.15	11.20
N.P. 1					
N.P. 1			N.P. 2		
10.10	8.40	Lv St. Paul (Union Station).....Ar	1900	6.40	10.20
10.55	9.15	Lv Minneapolis (Hen. Av. Stn.)Ar	1890	6.10	9.47
Vista-Dome North Coast Limited					
7.25	7.25	Lv Duluth.....Ar	1881	6.57	6.57
7.38	7.38	" Superior.....Ar	1877	6.45	6.45
The Mainstreeter					
2.05	11.53	Lv Staples.....Ar	1733	3.42	6.56
5.06	2.35	" Fargo.....Ar	1622	1.35	4.15
7.36	4.32	" Jamestown.....Ar	1530	11.59	2.25
	6.20	" Bismarck.....Ar	1428	10.14	12.45
	6.07	" Mandan. (Mountain Time).....Ar	1423	8.58	11.16
	8.56	" Dickinson.....Ar	1322	7.11	8.41
	11.47	" Glendive.....Ar	1217	5.11	5.49
	1.27	" Miles City.....Ar	1138	3.45	4.16
	2.29	" Forsyth.....Ar	1093	2.54	3.11
	4.33	Lv Billings.....Ar	991	1.05	12.53
Vista-Dome North Coast Limited					
	1.42	Lv Livingston.....Ar	875	10.56	10.25
	8.47	" Boseman.....Ar	851	10.11	9.35
	11.30	" Butte.....Ar	756	7.40	6.20
	11.20	" Helena.....Ar	753	7.35	6.45
	1.22	" Garrison.....Ar	704	6.29	4.52
	3.14	" Missoula.....Ar	636	5.08	3.15
	4.04	" Paradise. (Pacific Time).....Ar	565	2.17	12.18
	6.21	" Sandpoint.....Ar	446		9.48
	7.53	" Athol.....Ar	418		7.12
	7.52	Ar Spokane (N.P. Station).....Lv	378	10.45	8.30
S.P.S. No. 3					
	8.21	Lv Spokane (N.P. Station).....Ar	378	10.30	8.01
	11.26	Ar Pasco.....Lv	231	7.50	5.00
S.P.S. No. 1					
	12.55	Lv Pasco.....Ar	231	7.05	2.00
	3.05	Ar Wishram.....Lv	106	5.00	11.53
	5.05	" Vancouver.....Ar	10	3.22	10.10
	5.45	Ar Portland. (Union Station).....Lv	0	3.00	9.45

3-21-43	29	C.B. & Q. Connections at Billings for Denver & Mo. River Points	30	42-20-12
8.45		Lv St. Louis. (Wab.).....Ar		9.45
5.00		Lv Kansas City. (CB & Q).....Ar		12.10
6.30		Lv St. Joseph.....Ar		10.30
10.45		Lv Omaha.....Ar		7.30
12.20		Lv Lincoln.....Ar		6.10
7.45		Ar Billings.....Lv		10.10
	8.30	Lv Denver.....Ar		7.35
	4.00	Ar Billings.....Lv		1.30

a—Passengers not carried locally between Aurora and Chicago.
 ① Arrive ② Leave daily except Sunday.
 ③ Leave St. Paul daily except Saturday.
 ④ Bus from Logan.
 ⑤ Bus from Garrison.

EQUIPMENT

VISTA-DOME NORTH COAST LIMITED BETWEEN CHICAGO AND PORTLAND All Lightweight Equipment

S. P. & S. 1-2, N. P. 25-26, C. B. & Q. 25-26

STANDARD SLEEPER-CLUB-LOUNGE CAR—With 6 roomettes, 3 double bedrooms. Between Pasco and Portland. (Car 10 westbound, Car 20 eastbound.)

OBSERVATION LOUNGE-SLEEPING CAR—Between Chicago and Pasco. Four double bedrooms, 1 compartment, spacious lounge, radio, library, writing desk. Buffet service. (259 westbound, 269 eastbound.)

STANDARD SLEEPING CAR—Between Chicago and Portland. Newest type all-room car. 4 double bedrooms, 6 roomettes, 8 duplex roomettes. (255 westbound, 265 eastbound.)

VISTA-DOME COACH—Between Chicago and Portland. Chaise lounge "sleepy hollow" seats with leg rests for reclining full length. (C253 westbound, C263 eastbound.) Seats reserved in advance. Seat charge.

DELUXE COACH—Between Spokane and Portland, 56 reclining seats. (Advanced reservations required.) 50¢ seat charge.

LEWIS & CLARK TRAVELLER'S REST BUFFET-LOUNGE CAR—Between Chicago and Pasco. Select and a la carte meals, snacks and beverages, magazines, lounge section.

DINING CAR SERVICE—Between Chicago and Portland. Club breakfasts, \$1.80 to \$2.35; Table d'hote dinner, \$3.35; Table d'hote luncheon, \$3.00. Special plate luncheons and dinners, \$2.60. Also a la carte service.

STEWARDESS NURSE SERVICE—A Stewardess, who is also a registered nurse, is a member of the train personnel between Chicago and Pasco.

TICKETS—All classes of regular and reduced rate rail tickets will be honored for passage on the North Coast Limited except during period June 1st through September 30th and December 1st through January 15th each year half rate tickets will not be honored.

THE MAINSTREETER

BETWEEN CHICAGO AND PORTLAND

S. P. & S. 3-4, N. P. 1-2, C. B. & Q. 47-48

SLUMBER COACH—Between Chicago and Pasco sleeping accommodations may be purchased with coach ticket. (SC11 westbound, SC22 eastbound.) Standard sleeping cars available on CBQ 47-48 between St. Paul and Chicago.

DINING CAR SERVICE—Between St. Paul and Spokane.

DELUXE RECLINING SEAT COACHES—Between Chicago and Pasco. Between Pasco and Portland. Between Spokane and Portland.

Light face figures denote A.M. time. Bold face figures denote P.M. time. Ar. Arrive Lv. Leave f/ Stop on Signal.



SPOKANE, PORTLAND AND SEATTLE RAILWAY SYSTEM

S. P. & S. RY.—OREGON TRUNK RY.—OREGON ELECTRIC RY.—(Subsidiaries of Northern Pacific and Great Northern Railways)

TRANSCONTINENTAL TRAIN SERVICE—BETWEEN PORTLAND, SPOKANE AND EAST

VIA CHICAGO, BURLINGTON & QUINCY AND GREAT NORTHERN SPOKANE, PORTLAND AND SEATTLE RAILWAYS

Westbound, Read Down		Eastbound, Read Up				
Daily Western Star No. 47	Daily Empire Builder No. 31	Chicago, Burlington and Quincy Railroad (Central Time)	Miles from Portland	Daily Empire Builder No. 32	Daily Western Star No. 24	Daily No. 48
10.30	1.15	Lv Chicago (Un. Stn.).....Ar	2260	2.00	11.20	7.40
11.09	① 1.52	" Aurora.....Ar	2222	① 1.15	10.25	6.40
1.12	3.26	" Savanna.....Ar	2115	11.39	8.50	4.35
4.24	5.36	" LaCrosse.....Ar	1963	9.21	6.26	1.52
7.15	8.00	Ar St. Paul (Un. Stn.).....Lv	1833	7.15	4.00	11.20
Great Northern Ry.						
No. 3	No. 27				No. 28	No. 4
7.30	9.00	Lv St. Paul (Un. Stn.).....Ar	1833	6.35	3.20	7.50
7.55	9.35	" Minneapolis (GN Stn.).....Ar	1822	6.00	2.40	7.20
	11.20	Lv Willmar.....Ar	1731	4.10		
	1.17	" Breckenridge.....Ar	1618	2.20		
9.08		" St. Cloud.....Ar			1.13	6.00
10.59		" Fergus Falls.....Ar			10.59	3.49
12.19	2.25	" Fargo.....Ar	1571	1.20	9.40	2.40
1.50	4.32	" Grand Forks.....Ar	1493			12.57
	6.00	" New Rockford.....Ar	1447		10.59	7.31
	8.59	Ar Minot.....Lv	1338	9.00	5.40	9.00
	8.10	Lv Williston (Central Time).....Lv	1218	6.25	3.10	
	11.30	Lv Williston (Mountain ")Ar	1218	5.15	2.00	
	3.05	" Glasgow.....Ar	1062	2.26	10.50	
	⑥ 6.10	" Havre.....Ar	909	11.40	8.15	
		Ar Great Falls.....Lv	903		④ 4.55	
		Lv Great Falls.....Ar	903			
	5.10	Lv Shelby.....Ar	804	9.45	6.06	
	5.45	" Cut Bank.....Ar	780	9.15	5.35	
	6.48	" Glacier Park.....Ar	733		4.49	
	8.25	" Belton.....Ar	676		2.15	
	8.52	" Columbia Falls.....Ar	661			
	⑧ 8.20	Lv Kalispell.....Ar	676	⑥ 6.45	② 3.30	
	9.10	Lv Whitefish.....Ar	653	6.00	1.45	
	11.40	" Libby.....Ar	537	3.37	11.12	
	12.01	Ar Troy (Mountain Time).....Lv	519	3.15	10.43	
	11.08	Lv Troy (Pacific Time).....Ar	519	2.15	9.37	
	11.56	Lv Bonner's Ferry.....Ar	488		8.47	
	12.34	Lv Sandpoint.....Ar	454		8.12	
	2.15	Ar Spokane (GN Stn.).....Lv	379	11.10	6.30	
Spokane, Portland and Seattle Railway						
No. 3	No. 1			No. 2	No. 4	
9.40	11.40	Lv Spokane. (GN Stn.).....Ar	379	10.00	5.40	
12.55	2.40	" Pasco.....Lv	231	7.20	2.30	
3.05	4.45	Ar Wishram.....Lv	106	5.00	11.53	
5.23	6.35	" Vancouver.....Ar	10	3.22	10.04	
5.45	7.00	Ar Portland (Un. Stn.).....Lv	0	3.00	9.45	

EQUIPMENT

THE STREAMLINED EMPIRE BUILDER (Lightweight Streamlined Equipment Only)

CHICAGO — PORTLAND CB&Q 31-32, GN 31-32, SP&S 1-2

Standard Sleeper-Club-Lounge car with 6 Roomettes, 3 Double Bedrooms, between Spokane and Portland. (Car 10 Westbound, Car 20 Eastbound.)

Great Dome Buffet-Lounge. Luxurious full length Dome Lounge with colorfully appointed Beverage Lounge in lower section between Chicago and Spokane.

Standard Sleepers offering latest types of Pullman accommodations. Two Compartments, 5 Double Bedrooms, 6 Roomettes. Between Chicago, Spokane and Portland (312 Westbound, 322 Eastbound.)

Great Dome Coach. Reclining seats with leg rests. Radio reception. Between Chicago and Portland one 46-seat coach (105 Westbound, 205 Eastbound.)

Advance coach seat reservations should be made so that definite coach seat assignment may be obtained before departure. All seats reserved in advance (including seat for children under 5 years of age) seat charge.

DeLuxe Coach between Spokane and Portland, 56 reclining seats. Advanced reservations required. 50¢ seat charge.

The Ranch-Lounge Car—Between St. Paul and Spokane. Radio reception. Coffee shop with counter and table service at economical meal prices. Club breakfasts: fruits and fruit juices, cereals, eggs, toast, rolls, doughnuts and beverages. Plate luncheons and dinners. Soups, sandwiches, salads, desserts and beverages available throughout the day.

Dining car with the most modern furnishings, decor and semi-private dining sections between Chicago and Portland. Radio reception. Traditional famous Great Northern meals. Club breakfasts, plate luncheons, table d'hote luncheons, plate dinners, table d'hote dinners. Also a la carte service for all meals.

To avoid standing in line for dinner, passengers have the choice of one hour dining periods beginning at 5 P.M. Dining car steward on the train arrange dinner reservations.

Tickets—Circus, Show, Banana Messenger, Drover's or Caretaker's tickets and Livestock Contracts will not be honored. Reduced rate tickets honored certain periods, consult agent.

Baggage. Limited amount of checked baggage will be handled.

THE WESTERN STAR (Lightweight Streamlined Equipment)

CHICAGO-PORTLAND NO EXTRA FARE CB&Q, 47-48, GN 27-28, SP&S 3-4 ALL CLASSES OF TICKETS HONORED

Standard Sleeping Cars offering modern Pullman accommodations between Chicago, St. Paul and Spokane, one car containing 16 Duplex Roomettes, and 4 Bedrooms. Double Bedrooms are connecting and may be sold en suite.

Streamlined Day-Nite Coaches between Chicago and Spokane. Deluxe coaches between Spokane and Portland.

Diner between St. Paul and Spokane.

① Passengers not carried locally between Aurora and Chicago. c—No. 31 stops at Glasgow to discharge revenue passengers from Minot and East and to receive revenue passengers for Spokane and West where No. 1 is scheduled to stop. d—No. 32 stops at Glasgow to discharge revenue passengers from Spokane and West and to receive revenue passengers for Minot and East where No. 2 is scheduled to stop. e—No. 31 stops at Cut Bank to discharge revenue passengers from Williston and East and to receive revenue passengers for scheduled stops Spokane and West. g—No. 32 stops at Cut Bank to discharge revenue passengers from Spokane and West and to receive revenue passengers for scheduled stops Williston and East. ④ Bus service, rail tickets honored. ⑥ Via train 3 from Havre. ⑦ Via train 4 to Havre.

STANDARD TIME

Light face figures denote A.M. time. Bold face figures denote P.M. time. Ar. Arrive Lv. Leave f/ Stop on Signal.



SPOKANE, PORTLAND AND SEATTLE RAILWAY SYSTEM

S. P. & S. RY. - OREGON TRUNK RY. - OREGON ELECTRIC RY. - (Subsidiaries of Northern Pacific and Great Northern Railways)

PORTLAND - WISHRAM - PASCO - SPOKANE TRAINS

Westbound Read Down					Eastbound, Read Up					
SPS No. 3 Daily	NP 1 SPS 3 Daily	SPS No. 1 Daily	SPS No. 2 Daily	Elev. va.	Spokane, Portland and Seattle Railway	Miles from Portland	SPS No. 2 Daily	NP No. 26 Daily	SPS 4 NP 2 Daily	SPS No. 4 Daily
9.40	8.21 N.P. Ry No. 1	11.30	11.40	1871 Lv.	Spokane ☆☆☆ (business capital of Great No. Station Inland Empire) Ar	379.5	10.00	10.30	8.01	5.40
	Spokane to Pasco Provisional Stops at Cheney Sprague Ritzville Lind Connell	Vista-Dome North Coast Limited Via N.P. Ry Spokane to Pasco	Streamlined Empire Builder	2292 Lv.	Nor. Pac. Station	377.5			NP Ry No. 2	
11.12				2215 Lv.	South Cheney } Vast plateaus of Amber } Eastern Wash.	360.7			Pasco to Spokane Provisional Stops at Cheney Sprague	
				2090 Lv.	Rodna	349.5				
				1947 Lv.	Lamont (West edge great Palouse Rockwell grain district)	343.3				
				1826 Lv.	Benge	334.7				
				1706 Lv.	Hooper	329.4				
				1468 Lv.	Washtucna	323.8				
				1246 Lv.	Sprague	311.1				
				1067 Lv.	Kahlotus } Spectacular Devil's Farrington } Snake River Canyon	299.5				
				888 Lv.	Snake River	285.3				
				719 Lv.	Redd } Snake River Canyon	277.8				
				496 Lv.	Levey } Ice Harbor Dam	268.6				
				466 Lv.	PASCO ☆☆☆	256.3				
				354 Lv.	PASCO ☆☆☆	250.5				
				354 Ar.	PASCO ☆☆☆	244.8	7.20	7.50	5.00	2.30
12.30	11.26	2.15	2.30	354 Ar.	PASCO ☆☆☆	231.3				
12.55	12.55	2.40	2.40	358 Lv.	PASCO	231.2	7.05	7.05	2.00	2.00
				352 Lv.	Kennewick (Columbia River Flaley Crossing)	228.5				
				352 Lv.	Yallopit (Named after Indian Chief. Burrian met by Lewis & Clark, 1805-6)	223.9				
				351 Lv.	No. McNary (McNary Dam)	215.8				
				349 Lv.	Plymouth (Opp. Old Oregon Trail)	209.3				
				325 Lv.	Whitcomb	195.2				
				266 Lv.	Alderdale	192.0				
				259 Lv.	McCredle	179.4				
				241 Lv.	Roosevelt	162.2				
				230 Lv.	Sundale	157.6				
				216 Lv.	Goodnoe	146.7				
				203 Lv.	Cliff's (Mt. Hood, 11,225 ft. visible)	140.8				
				175 Lv.	Maryhill	130.8				
				166 Lv.	WISHRAM (Mt. Hood visible)	119.7				
3.05	3.05	4.45	4.45	166 Lv.	WISHRAM	114.3	5.00	6.00	11.53	11.53
3.15	3.15	4.48	4.48	166 Lv.	WISHRAM	106.1	4.58	4.58	11.46	11.46
				161 Lv.	North LYLE (Mamaloosse Indian burying)	103.2				
				101 Lv.	Bingen-White Salmon (Mt. Hood)	93.3				
				101 Lv.	Underwood (Apple country)	85.3				
				101 Lv.	Hood (Mt. Hood, 11,225 ft. visible)	75.9	4.29	4.29	gm11.26	gm11.26
				99 Lv.	Cooks (Mitchell Point to south)	72.5				
				98 Lv.	Stevenson (Cascades of Columbia)	70.9				
				94 Lv.	North Bonneville (Bonneville Dam)	65.8				
				78 Lv.	Skamania (Beacon Rock, alt. 840 ft.)	54.3	4.08	4.08	g 10.56	g 10.56
				51 Lv.	Prindle (Columbia River)	42.1				
				49 Lv.	Mount Pleasant (Mt. Hood, 11,225 ft.)	37.8				
				48 Lv.	Washougal (Large woolen mills)	32.0				
				48 Lv.	Camas (Large paper and pulp mills)	28.0				
				48 Lv.	Fisher	23.8	3.38	3.38	m 10.26	m 10.26
4.40	4.40	6.17	6.17	48 Lv.	Fisher	19.8				
5.05	5.05	6.35	6.35	46 Ar.	VANCOUVER (founded 1825)	10.0	3.22	3.22	10.10	10.10
5.20	5.20	6.38	6.38	46 Lv.	VANCOUVER	10.0	3.19	3.19	10.04	10.04
5.45	5.45	7.00	7.00	46 Lv.	East St. Johns ... 5 snow mts.	7.0				
				46 Ar.	Union Station	0.0	3.00	3.00	9.45	9.45
				32 Ar.	PORTLAND (City of Roses) ☆☆☆ Lv	0.0				

☆☆ Rail-Auto available at this point

FOR THROUGH SERVICE AND CONSIST OF ALL TRAINS, SEE PRECEDING PAGES 2 and 3.

A TRANS-CONTINENTAL SYSTEM OF RAILWAYS THROUGH AMERICA'S WONDERLAND

Traversing the northern states between the Pacific Northwest and Chicago presents a veritable wonderland offering passengers a splendid variety of ever-changing scenery.

Over these lines, between Portland and Chicago, are operated four of America's famous trains, the Streamlined Empire Builder and the Streamlined Western Star,

via S.P.&S. Spokane, G.N. St. Paul, C.B.&Q. Chicago, and the Streamlined Vista Dome North Coast Limited and The Streamlined Mainstreeter via S.P.&S. Pasco, N.P. St. Paul and C.B.&Q. Chicago where connections are made to all points east and south.

These trains provide passengers with every feature of modern railway travel for their comfort, and pleasure.

† Telegraph stations.

STANDARD TIME

Light face figures denote A.M. time. Bold face figures denote P.M. time. Ar. Arrive Lv. Leave. / Stop on Signal.



SPOKANE, PORTLAND AND SEATTLE RAILWAY SYSTEM

S. P. & S. RY. - OREGON TRUNK RY. - OREGON ELECTRIC RY. - (Subsidiaries of Northern Pacific and Great Northern Railways)

PORTLAND - REDMOND - BEND TRAINS

Read Down			Read Up		
Elev.	No. 105 Sat. Only	No. 103 Daily Ex. Sat. & Sun.	Oregon Trunk Ry. Mixed Trains	Miles from P't'd	No. 102 Daily Ex. Sun.
3618	7.00	11.00	Lv Bend	257.6	7.00
3572	7.11	11.15	Deschutes	250.3	6.35
2983	7.30	11.40	Redmond	240.7	6.15
2918	7.35	11.46	Prineville Jet	238.4	5.50
2863	7.40	11.52	Terrebonne	235.6	5.45
2850	7.52	12.09	Opal City	227.7	5.31
2624	8.02	12.25	Culver	221.1	5.18
2517	8.12	12.35	Metolius	216.3	5.10
2458	8.25	12.55	Madras	211.1	5.00
2169	8.35	1.10	Paxton	205.9	4.39
1787	8.51	1.26	Gateway	200.1	4.23
1254	9.13	1.48	South Jet	191.9	4.01
1203	9.24	1.59	Kaakela	186.2	3.45
1074	9.43	2.18	Dixon	177.2	3.26
1012	9.50	2.25	Dant	173.6	3.19
960	9.57	2.32	Nena	169.9	3.11
852	10.20	3.01	Maupin	160.7	2.53
783	10.35	3.16	Sherar	153.4	2.39
606	10.51	3.32	Oakbrook	145.8	2.23
510	11.10	3.51	Sinamox	136.5	2.04
508	11.18	3.59	Dike	132.5	1.55
354	11.35	4.16	Lookit	124.4	1.38
286	12.01	4.41	Moody	112.0	1.13
166	12.15	5.00	Ar Wishram	106.1	1.00
	No. 3 Daily		Spokane, Portland & Seattle Railway		No. 4 Daily
166	3.15		Lv Wishram	106.1	11.46
32	5.45		Ar Portland	0.0	9.45

SPECIAL STOPS
No's 1 & 2 Stops only as shown

No. 3 At any station to discharge revenue passengers from east of Spokane.

At any station east of Pasco to receive revenue passengers for Vancouver and Portland.

At any station west of Pasco to discharge revenue passengers from Spokane.

No. 4. At any station to receive revenue passengers destined east of Spokane.

At any station west of Pasco to receive revenue passengers for Spokane.

At any station east of Pasco to discharge revenue passengers from Portland or Vancouver.

Stops to receive passengers made only upon advance arrangements through Agent. Stops to discharge passengers made upon application to conductor.

References:
b Will stop on signal to receive revenue passengers for Vancouver and Portland.
g Stops to discharge revenue passengers from Portland and Vancouver.

m Stops to receive or discharge revenue passengers to or from Pasco and East

• Stops to entrain revenue passengers to points East of Spokane provided advance arrangements are made through agent. Stops to detrain revenue passengers from points East of Spokane on application to conductor.

EQUIPMENT BETWEEN WISHRAM and BEND
No Leg Rest - Non Air Conditioned

RAIL TRAVEL CREDIT CARD PLAN
permits purchase of Rail and Pullman tickets from any S. P. & S. Ry. Co. agent on Credit by securing a Credit Card from the Rail Travel Credit Agency, Room 436 Union Station, Chicago, Ill.

FREE BAGGAGE CART SERVICE
is available at stations in the following cities: Spokane, Pasco, Wash.; Portland, Ore. Please use them to your convenience, leaving them at train side or at the street curb.

YOUR ROOM'S READY

...when you wire ahead!



Western Union Hotel Reservation Service is the fast, convenient, inexpensive way to make and confirm the accommodations you want...where you want them. **WESTERN UNION**

SAVE MONEY ON HALF-FARE FAMILY TRAVEL PLAN!

Take Advantage of Our Family Fares.

ONE-WAY TRAVEL—Head of family pays regular one-way fare, first class or coach, other parent and children, 12 through 21, each pay half fare. Children 5 through 11, pay one-quarter fare. Children under five are carried free.

ROUND-TRIP TRAVEL—Head of family pays regular round trip fare, first class or coach, other parent and children, 12 through 21, each pay one-way fare for the round trip. Children, 5 through 11, pay half of the one-way fare for round trip. Children under five are carried free.

For details consult any Spokane, Portland and Seattle Railway travel representative.

PACIFIC TRAILWAYS

PORTLAND - BEND

Bus	Bus	Bus	Bus
		PORTLAND Ore.	
		Madras Ore.	
		Redmond Ore.	
		BEND Ore.	

Rail tickets routed via OT - S. P. & S. Railways from or to Central Oregon points will be honored to or from Portland, Oregon by the Mt. Hood Stages (Pacific Trailways). Ask agent for details.

FREIGHT SERVICE

Route your freight shipments via the Spokane, Portland and Seattle Railway for fast and dependable service—between Portland, Astoria, Pasco, Spokane, Yakima, Walla Walla, Lewiston, Eugene, Bend and all points east and south.

Let Us Handle Your Transportation Problems

FREIGHT SERVICE ONLY
Portland - St. Helens - Astoria

0	Portland	71.2	Westport
7.3	Linnton	73.5	Wauna
19.9	Scappoose	76.8	Bradwood
27.6	St. Helens	86.5	Knappa
41.9	Prescott	99.7	Astoria
45.8	Bainier	105.6	Warrenton
58.0	Locoda	118.0	Seaside
62.2	Clatskanie		

HAMMOND BRANCH

Miles	STATIONS
0	Warrenton
1.8	Flavel
2.7	Hammond

FREIGHT SERVICE ONLY

is operated on the following Branches

S. P. & S. Railway

GOLDENDALE BR

Miles	STATIONS
0	Lyle
10.3	Pitt
13.4	Klickitat
16.9	Wahkiakus
30.2	Warwick
35.3	Centerville
41.6	Goldendale

VERNONIA BRANCH

Miles	STATIONS
0	Portland
7.3	Linnton
11.7	Burlington
17.1	Bowers Junction
21.9	North Plains
27.5	Banks
31.7	Manning
43.1	Braun
48.5	Vernonia

Oregon Electric Railway

PORTLAND-SALEM-ALBANY-EUGENE LINE

Miles	STATIONS
0	Portland
21.5	Forest Grove Jct
27.6	Beaverton
32.1	Tigard
36.1	Tualatin
39.0	Tonquin
43.0	Wilsonville
49.1	Donald
57.4	St. Louis
63.1	Hopmere
64.1	Quincy
71.2	Salem
79.9	Orville
96.5	Albany Yard
97.8	Albany
124.2	Harrisburg
128.7	Junction City
142.8	Eugene

FOREST GROVE BRANCH

Miles	STATIONS
0	Forest Grove Jct
0.8	Oreocoe
4.5	Hillsboro
7.9	Cornelius
10.6	Forest Grove

SANTIAM BRANCH

Miles	STATIONS
0	Albany Yard



SPOKANE, PORTLAND AND SEATTLE RAILWAY SYSTEM

CONNECTIONS AT PORTLAND

S. P. & S. RY. - OREGON TRUNK RY. - OREGON ELECTRIC RY. - (Subsidiaries of Northern Pacific and Great Northern Railways)

PORTLAND - PUGET SOUND - BRITISH COLUMBIA

Northern Pacific Ry. - Great Northern Ry. - Union Pacific R.R.

Northbound—Read Down			Southbound—Read Up			
G.N. 459 Daily	N.P. 407 Daily	U.P. 457 Daily	G.N. 460 Daily	N.P. 408 Daily	U.P. 458 Daily	
1.30	5.30	9.30	Lv Portland, Un. Sta. Ar	12.05	4.00	9.30
1.49	5.48	9.51	Lv Vancouver, Wn. Ar	11.43	3.38	9.08
			Ar Kalamazoo, Wn. Lv	11.11		
2.29	6.25	10.31	Ar Kelo-Longview, Wn. Lv	10.59	2.58	8.25
f 2.39			Ar Castle Rock, Wn. Lv	10.47		
3.11	7.09	11.13	Ar Chehalis, Wn. Lv	10.14	2.17	7.44
3.21	7.17	11.23	Ar Centralia, Wn. Lv	10.07	2.10	7.37
f 3.44	b 7.38	11.46	Ar East Olympia, Wn. Lv	b 9.43	b 1.47	v 7.14
4.25	8.19	12.27	Ar Tacoma, Wn. Lv	9.01	1.05	6.32
k 5.30	k 9.15	u 1.30	Ar Seattle, Wn. Lv	k 8.05	k 12.15	u 5.30
	358		360 GREAT NORTHERN RY.		357	359
8.00		4.30	Lv Seattle, Wn. Ar	11.50	4.35	
8.53		5.21	Lv Everett, Wn. Lv	10.55	3.38	
10.20		6.49	Lv Bellingham, Wn. Lv	9.26	2.11	
11.45		8.15	Ar Vancouver, B.C. Lv	8.00	12.40	

b—To and from Olympia by bus. k—King Street Station. u—Union Station. v—No connecting bus service between East Olympia and Olympia.

SOUTHERN PACIFIC COMPANY

Southbound—Read Down Northbound—Read Up

11		12
4.15	Lv Portland, Ar	8.50
5.25	Ar Salem, Wn. Lv	7.18
5.58	Ar Albany, Wn. Lv	6.48
6.53	Lv Eugene, Wn. Lv	6.05
11.21	Lv Klamath Falls, Wn. Lv	1.25
3.59	Ar Redding, Wn. Lv	8.35
7.35	Ar (a) Sacramento, Wn. Lv	6.10
8.07	Ar Martines, Wn. Lv	4.50
9.20	Ar Oakland, 16th St. Wn. Lv	3.50
9.55	Ar San Francisco, Wn. Lv	3.10
7.20	Ar Los Angeles, Wn. Lv	6.00

(a)—Via P.G. Lines Bus. From Davis

EQUIPMENT OF TRAINS

Train 11-12, Cascade—(Streamlined, Air Conditioned). Between Portland and San Francisco. Standard sleeping cars with bedrooms, roomettes, lounge and dining car. Non reserved seat chair car.

Great Northern Ry. Bend, Klamath Falls Bieber	SP&S 4		SP&S 2		Northern Pacific Walla Walla		SP&S 3		SP&S 1	
	9.45	3.00	7.05		Lv Portland, Ar	5.45	7.00	12.55	2.40	
(Freight Service Only)					Ar Pasco, Wn. Lv					
Miles	11.24	2.00	2.20	3.00	Lv Walla Walla, Wn. Ar	10.10	4.15	9.50	3.55	
0 Bend	12.25	3.00	3.00		Ar Walla Walla, Wn. Lv	8.15	3.15			
13 Lava										
32 La Pine										
52 Crescent		2-25 Dly	1 Dly		Northern Pacific West of Pasco	2 Dly	25-3 Dly			
68 Chemult										
115 Chiloquin		3.00			Lv Portland, Ar	5.45				
133 Algoma		7.05			Ar Pasco, Wn. Lv	12.55				
145 Klamath Falls		2.40	11.55		Lv Pasco, Wn. Ar	4.31	7.25			
162 Merrill		12.05			Ar Kennewick, Wn. Lv	4.16				
213 Scarface		12.52			Ar Prosser, Wn. Lv	3.23				
225 Lookout		1.26			Ar Toppenish, Wn. Lv	2.53				
236 Bieber		4.39	1.55		Ar Yakima, Wn. Lv	2.35	6.50			
		5.31	3.09		Ar Ellensburg, Wn. Lv	1.06	4.41			

MARK YOUR BAGGAGE

All baggage, whether checked or carried with you, should be plainly marked with your name and permanent address. This will insure prompt recovery should it become lost or go astray. Remove all obsolete labels and addresses.

JEWELRY, CURRENCY, VALUABLE PAPERS and LIQUIDS should not be placed in baggage intended for checking. The railway will not assume responsibility for loss of, or damage to such articles.

BUS	GREYHOUND LINES	BUS
Frequent Service	Spokane	Frequent Service
	Spangle	
	Rosalie	
	Oakesdale	
	Garfield	
	Palouse	
	Pullman	
	Moscow	
	Lewiston	

SAN FRANCISCO—LOS ANGELES—COAST LINE

	76	98	M	75	99
	9.00	8.25	0	8.30	7.00
	10.15	9.19	47	Ar San Francisco, Wn. Ar	7.13
	3.08	1.30	248	Ar San Luis Obispo, Wn. Lv	1.56
	5.36	3.46	357	Ar Santa Barbara, Wn. Lv	11.44
	8.30	6.15	470	Ar Los Angeles, Wn. Lv	9.00

SAN FRANCISCO—LOS ANGELES—VALLEY LINE

	62	M	61
	7.35	0	5.45
	8.05	4	5.15
	8.25		4.35
	12.08	205	Lv Fresno, Wn. Lv
	2.20	313	Lv Bakersfield, Wn. Lv
	7.20	482	Ar Los Angeles, Wn. Lv

Read Down UNION PACIFIC RAILROAD Read Up

18 Daily	106 Daily	12 Daily		17 Daily	105 Daily	11 Daily
10.00	12.30	7.10	Lv Portland, Ar	5.00	9.00	8.30
11.24	f 1.44	8.53	Lv Hood River, Wn. Lv	3.17	f 7.33	6.55
12.03	2.15	9.25	Lv The Dalles, Wn. Lv	2.40	7.05	6.20
3.20	4.31	12.25	Lv Pendleton, Wn. Lv	11.00	4.45	2.25
7.25	7.45	3.50	Lv Baker, Wn. Lv	6.57	1.30	10.00
10.43		7.13	Lv Payette, Wn. Lv	5.23		8.01
10.55		7.24	Lv Ontario, Wn. Lv	5.13		7.50
11.55	11.25	8.16	Lv Nampa, Wn. Lv	4.10	11.43	6.40
12.35	11.50	8.55	Lv Boise, Wn. Lv	3.35	11.20	5.55
5.35	3.40	2.20	Ar Pocatello, Wn. Lv	10.30	7.35	12.45
		5.35	Ar Ogden, Wn. Lv			8.55
		7.00	Ar Salt Lake, Wn. Lv			7.30
6.35			Ar Cheyenne, Wn. Lv	9.10		
9.30	3.30		Ar Denver, Wn. Lv	6.45	8.05	

STANDARD TIME Light face figures denote A.M. time. Bold face figures denote P.M. time. Ar.—Arrive. Lv.—Leave. f—Stop on Signal.

SPOKANE, PORTLAND AND SEATTLE RAILWAY SYSTEM

S. P. & S. RY. - OREGON TRUNK RY. - OREGON ELECTRIC RY. - (Subsidiaries of Northern Pacific and Great Northern Railways)



Sleeping, Parlor Car and Reserved Seat Fares

For information only. Subject to change without notice.

BETWEEN AND	PORTLAND		SPOKANE		BETWEEN AND	PORTLAND		SPOKANE	
	Parlor Car Seat	Lower Berth Standard	Lower Berth Standard			Parlor Car Seat	Lower Berth Standard	Lower Berth Standard	
Billings		\$12.25	\$7.90		Minneapolis	\$20.80	\$17.70		
Bingen-Wb. Salmon			5.80		Missoula	8.70	5.80		
Boseman		11.00	6.70		Oakland	11.00	14.05		
Butte			9.95	5.80	Omaha		20.80	17.70	
Camas				5.80	Pasco	2.35	5.80	5.80	
Chicago			24.20	20.80	Portland		5.80	5.80	
Denver			17.00	15.80	St. Paul		20.80	17.70	
Duluth			20.80	17.70	San Francisco		11.00	14.05	
Eugene		1.50	6.70	7.05	Seattle	① 1.60	5.80	5.80	
Fargo			18.85	14.70	Spokane	2.95	5.80		
Gardiner			11.75	7.55	Stevenson			5.80	
Glacier Park			9.50	5.80	Tacoma	① 1.20	5.80	5.80	
Great Falls			11.75	7.05	Vancouver			5.80	
Havre			11.75	7.55	Wahram	1.20		5.80	
Helena			9.95	5.80					
Kansas City			22.20	19.10					
(Via St. Paul, Minn.)									
Klamath Falls		3.40	6.70	9.50					
Livingston			11.45	7.05					
Los Angeles			15.80	18.10					
Los Angeles									
Lyle				5.80					

① Railroad Owned Cars.

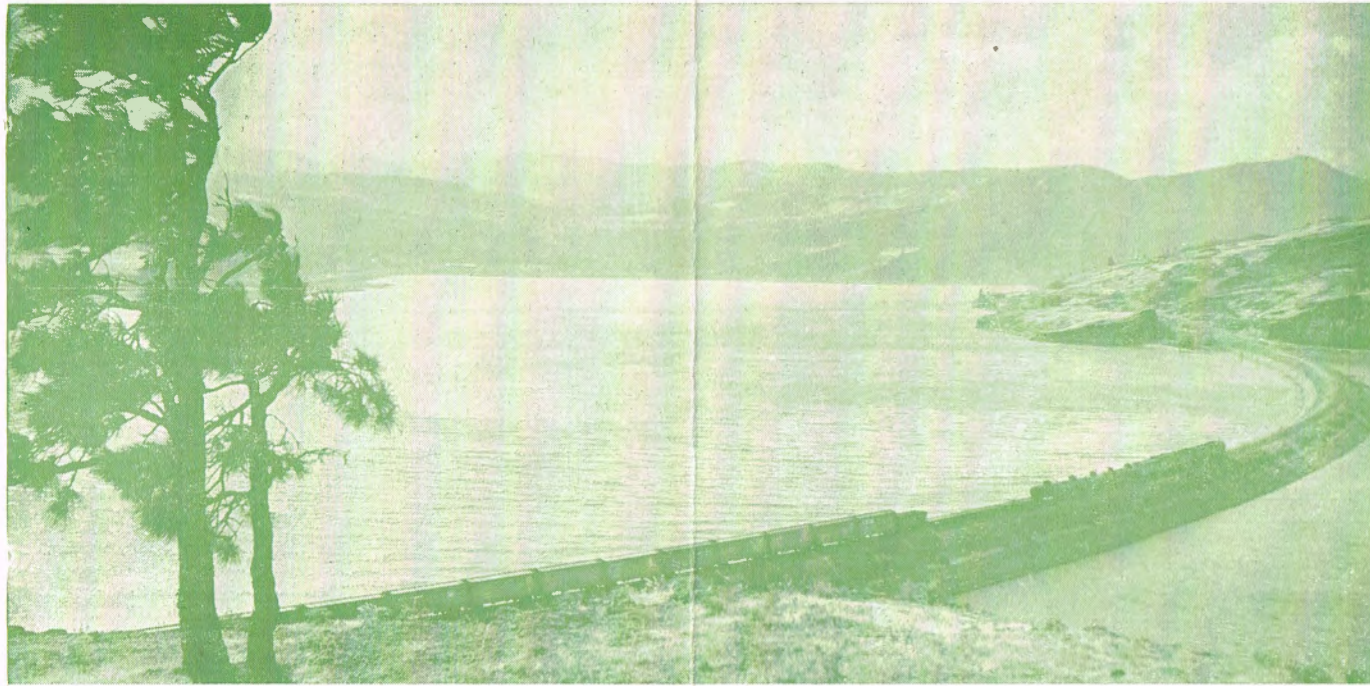
RATES FOR SLEEPING CAR ACCOMMODATIONS

Where Standard Lower Berth Is	Upper Berth Is	Duplex Roomette Is	ROOM-ETTE For One Person	Duplex Single Room For One Person	BED-ROOM For One Person	Bedroom Suite For Two or More Persons	Compartment For One or More Persons	Drawing Room For One or More Persons
\$ 5.80	\$ 4.40	\$ 6.35	\$ 8.10	\$10.20	\$14.75	\$26.65	\$15.85	\$21.35
6.10	4.60	6.65	8.50	10.65	15.40	27.85	16.55	22.30
6.70	5.15	7.40	9.40	11.65	16.65	30.40	18.05	24.40
7.05	5.40	7.85	9.95	12.20	17.50	31.80	18.95	25.65
7.55	5.65	8.30	10.55	13.05	18.65	34.05	20.10	27.25
				13.05				
7.90	6.10	8.75	11.05	13.75	19.50	35.60	21.00	28.55
8.70	6.65	9.65	12.20	14.90	21.20	38.15	22.90	31.20
9.50	7.15	10.55	13.25	16.25	22.95	42.10	24.85	33.90
9.95	7.55	10.95	13.80	16.90	23.90	43.80	25.85	35.35
10.00	7.50	11.10	13.90	17.00	24.00	44.05	26.00	35.50
11.00	8.40	12.25	15.50	18.65	26.30	48.25	28.45	38.90
11.45	8.65	12.70	16.00	19.25	27.20	49.90	29.50	40.35
11.75	9.00	13.05	16.60	19.95	27.95	51.30	30.25	41.45
12.25	9.25	13.55	17.10	20.45	28.90	53.15	31.45	43.05
14.05	10.70	15.45	19.70	23.45	33.00	60.80	35.75	49.15
14.45	11.05	16.00	20.15	24.10	33.85	62.25	36.65	50.35
14.70	11.35	16.25	20.70	24.70	34.45	63.65	37.30	51.25
15.90	12.10	17.55	22.20	26.40	36.95	68.05	40.15	55.25
17.00	12.90	18.85	23.75	28.10	39.40	72.65	42.80	59.00
17.70	13.55	19.45	24.75	29.25	41.05	75.70	44.50	61.35
18.10	13.70	19.95	25.25	29.85	41.75	77.10	45.40	62.55
18.45	14.00	20.30	25.85	30.45	42.60	78.70	46.30	63.85
18.85	14.30	20.70	26.25	30.95	43.35	80.10	47.20	65.10
19.10	14.55	21.05	26.80	31.60	44.05	81.30	47.85	66.00
20.15	15.35	22.20	28.20	33.20	46.40	85.75	50.40	69.55
20.80	15.90	22.95	29.15	34.45	47.85	88.50	51.95	71.70
22.20	16.85	24.40	31.00	36.40	50.90	94.10	55.30	76.35
23.15	17.65	25.50	32.45	38.10	52.95			

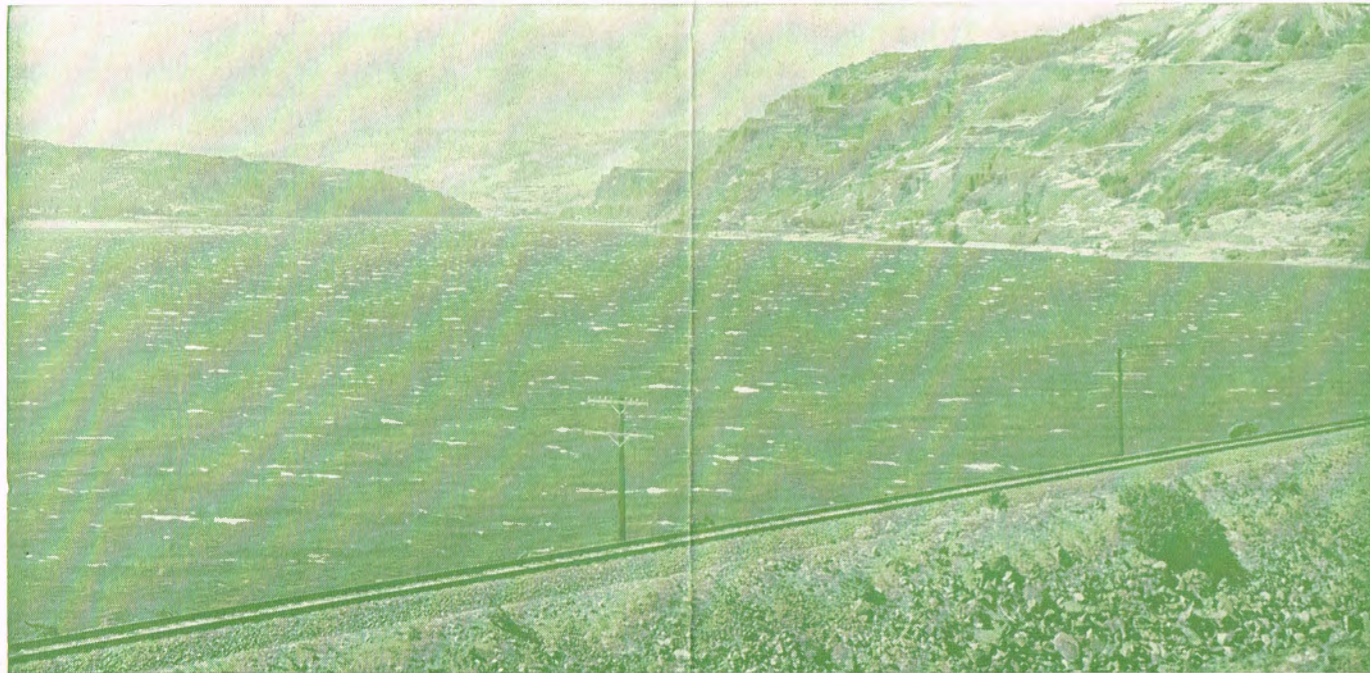


SPOKANE, PORTLAND AND SEATTLE RAILWAY SYSTEM

S. P. & S. RY. — OREGON TRUNK RY. — OREGON ELECTRIC RY. — (Subsidiaries of Northern Pacific and Great Northern Railways)



S. P. & S. Ry. Near Bingen-White Salmon, Washington

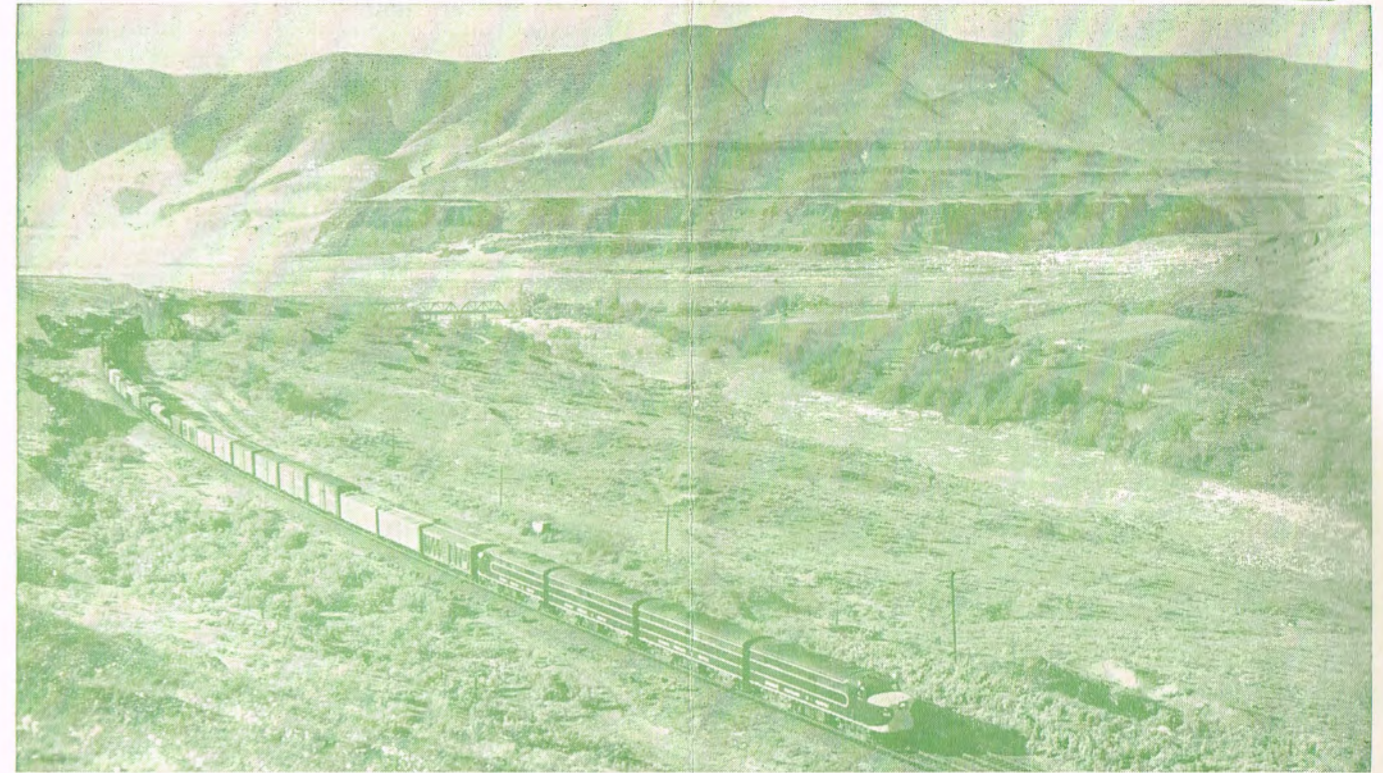


S. P. & S. Ry. Along The Columbia River Near Lyle, Washington

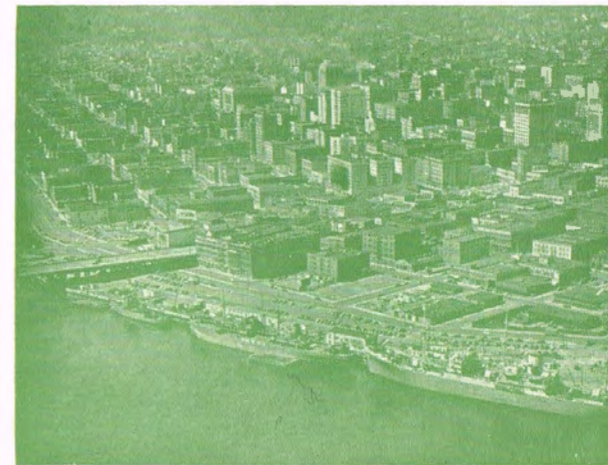


SPOKANE, PORTLAND AND SEATTLE RAILWAY SYSTEM

S. P. & S. RY. — OREGON TRUNK RY. — OREGON ELECTRIC RY. — (Subsidiaries of Northern Pacific and Great Northern Railways)



Oregon Trunk Ry. Near Moody, Oregon



Portland — the Rose City

Your Choice of ... Two Daily Trains
Between PORTLAND and SPOKANE

See Page 4 For Detailed Schedules

EASY way
to ship anything

Just phone Railway Express.
Prompt pick-up and fast
delivery within established
vehicle limits.



... safe, swift, sure



SPOKANE, PORTLAND AND SEATTLE RAILWAY SYSTEM

S. P. & S. RY. - OREGON TRUNK RY. - OREGON ELECTRIC RY. - (Subsidiaries of Northern Pacific and Great Northern Railways)

GENERAL INFORMATION

NOTE—This folder has been compiled with care, but may contain errors. Furthermore, it is sometimes necessary to change schedules without notice, trains shown are sometimes unavoidably delayed and connections missed. We hope none of our patrons will be inconvenienced by any of these causes, but the Railway Company will not be liable therefor.

ADJUSTMENT OF FARES. In cases of dispute with conductors or agents, passengers should pay fare required, take receipt and communicate with Auditor Revenue Accounts, S. P. & S. Ry., Box 571, Portland, Ore. 97207

REDEMPTION OF TICKETS. Wholly unused tickets will be redeemed by selling agent. Partly used tickets will be redeemed under tariff regulations on application to Auditor Revenue Accounts.

STOPOVERS will be allowed at all regular scheduled stops within limits, on application to Conductor.

CHILDREN'S FARES. Children under five years of age, when accompanied by parent or guardian, will be carried free of charge. Children five years of age and under twelve years of age will be charged one-half of the adult fares, if not mature enough to take care of themselves when traveling alone must not be ticketed unless accompanied by parent or guardian. Children twelve years of age and over will be charged the adult fare.

MARK YOUR BAGGAGE. All baggage should show name and permanent address of owner. Appropriate gummed labels may be secured from Ticket or Baggage Agent.

HAND BAGGAGE in Pullmans is restricted to what can be conveniently placed in berth or at seat occupied by passenger.

CHECKING CHARGE. 25c per suitcase, 50c per trunk or similar size carton.

CHECKED BAGGAGE. Baggage should be checked at least 30 minutes before departure of the train on which it is desired that it move. Every effort is made for prompt handling of baggage, but cannot guarantee forwarding on same train as passenger, nor can time of arrival be guaranteed.

BAGGAGE MAXIMUMS. Ordinarily 150 lbs. is free allowance for each adult ticket. No single piece of baggage exceeding 300 pounds in weight, or exceeding \$2500.00 in value will be checked. Free allowances are subject to tariff stipulation as to contents, weight, value and size.

BAGGAGE INSURANCE. A charge of only twenty-five cents is made for each hundred dollars value declared above \$100 for baggage checked for each adult passenger and above \$50 for each half-fare ticket. The maximum baggage valuation which may be insured on a single ticket is \$2500.

LIMITED LIABILITY. Excess value of baggage must be declared and paid for at time of checking.

BICYCLES (not motorcycles), baby carriages, dogs and guns are carried in baggage cars subject to tariff regulations.

LOST ARTICLES should be inquired for at the Baggage Office, Union Station, Portland, Oregon, or S. P. & S. Station, Spokane, Wash.

RESPONSIBILITY. No responsibility is assumed for unchecked articles left in stations or cars.

GENERAL OFFICES

Amer. Bank Bldg., 621 S.W. Morrison St., Box 571, Portland, Oregon 97207

J. M. BUDD.....President.....St. Paul, Minn. 55101
 R. S. MACFARLANE.....Vice-President.....St. Paul, Minn. 55101
 N. S. WESTERGARD.....Vice-President and General Manager.....Portland, Oregon

J. G. MELONAS.....Asst. to General Manager.....Portland, Oregon
 R. A. LAWRENCE.....Traffic Manager.....Portland, Oregon
 F. J. HARRIS.....Asst. Traffic Manager.....Portland, Oregon
 W. J. CROSBIE.....General Passenger Agent.....Portland, Oregon
 H. F. ERZ.....General Freight Agent.....Portland, Oregon
 H. W. MILLER.....Gen. Industrial Agent.....Portland, Oregon
 C. S. JOHNSON.....Asst. General Industrial Agent.....Portland, Oregon
 F. S. BARLOW.....Superintendent.....Portland, Oregon
 L. Z. DANIELS.....General Mechanical Supt.....Vancouver, Wash.
 J. H. MOY.....Secretary and Chief Engineer.....Portland, Oregon
 H. H. EARLENBAUGH.....Treasurer.....Portland, Oregon
 W. T. COWAN.....Purchasing Agent.....Portland, Oregon
 L. F. LAWSON.....Comptroller.....Portland, Oregon
 R. T. WAHLGREN.....Auditor Disbursements.....Portland, Oregon
 B. CALKINS.....Auditor Revenue Accounts.....Portland, Oregon
 S. W. GRAY.....Auditor Misl. Accounts.....Portland, Oregon
 T. A. BURKE.....Auditor Machine Section.....Portland, Oregon
 W. J. SHEEHAN.....Gen'l Claim Agent.....Portland, Oregon
 H. E. HUDSON.....Right of Way and Tax Agent.....Portland, Oregon
 H. WENTZIEN.....Superintendent Dining Cars.....Portland, Oregon

Representatives

ALBANY, ORE. D. A. DARGIS (Phone Wabash 6-1546 or 6-1547) ... Agt., O. E. Ry. Sta.
 ASTORIA, ORE. L. J. COWAN, 20th & Marine Drive (P. FAIRfax 5-6111) ... Agt.
 BEND, ORE. E. A. KOSKELA (Ev. 2-3911) ... Agt. Passenger Sta.
 EUGENE, ORE. G. E. SKINNER (Ev. 2-2901) ... General Agent
 C. L. JOHNSON (Ph. DI 5-8757) ... Agt., O.E.Ry.Sta.
 W. Z. MYERS (Ph. Diamond 5-8759) ... General Agt.
 G. W. WRIGHT ... Traveling Frt. & Pass. Agt.
 HILLSBORO, ORE. C. F. DUERR (Ph. Midway 8-4241) ...
 JUNCTION CITY, ORE. L. E. WELTON (Ph. Wyman 8-2121) ...
 LOS ANGELES, CALIF. 90014 ... Agt., O.E.Ry.Frt.Dep.
 Great Northern Railway Room 517 510 W. 6th St. Bldg., Ph. Madison 9-1473
 T. L. May ... Sales Manager
 Northern Pacific Railway 610 South Main St., Phone Madison 7-2321
 S. A. JEWELL ... General Agent

OAKLAND, CAL. 94612
 Great Northern Railway 811 Financial Center. Ph. 832-7672
 OWEN FREEMAN ... Sales Manager
 Northern Pacific Railway ... 811 Central Building
 Ph. Glencourt 1-8717

PORTLAND, ORE. J. V. KRISMAN ... General Agent
 A. T. MERCER ... GAPD (SP&S-NP. Rys.)
 439 S.W. 6th Ave., Telephone 227-0415
 K. C. CLAUSON ... GAPD (SP&S-GN. Rys.)
 607 S.W. Washington St., Telephone 223-7273
 F. M. SMITH, Ticket Agt., Union Station, Foot of N.W. 6th Ave., Telephone 227-3421
 J. H. TAYLOR ... General Agent, Freight Dept.
 T. J. MARTIN ... Trav. Frt. & Pass. Agent
 F. J. KIRCHHOFF ... Trav. Frt. & Pass. Agent
 R. G. WHITE ... City Freight Agent
 D. H. CARLSON ... City Freight Agent
 L. L. COX ... City Freight Agent
 J. D. SURLLES, Local Freight Agent, N. W. 11th and Hoyt, Phone 228-9111

1101 American Bank Building
 Phone 228-9111

REDMOND, ORE. MRS. L. J. MORTON (Ph. Lincoln 8-2217) ... Agt., Passenger Sta.

SACRAMENTO, CAL. R. L. LAMB, Sales Mgr., G. N. Ry., 223 Forum Bldg. 95814.
 ST. HELENS, ORE. J. L. MCGRAW (Phone 658) ... Agt., S.P.&S. Station
 SALEM, ORE. P. J. MARTELL (Ph. 3-3129) Agt., O.E.Ry. Fr. Dep.
 SAN FRANCISCO, CAL. 94105
 Northern Pacific Railway 681 Market St. Phone 781-1078
 DANIEL TINNEY ... General Agent
 Great Northern Railway 681 Market St. Phone Sutter 1-6051; 1-6052
 C. G. ALEXANDER ... Gen. Agent Passenger Dept.
 SEASIDE, ORE. R. E. Dunton (Ph. REDfield 8-5322) ... Agent, S.P.&S. Ry. Sta.

SPOKANE, WASH. 99204
 A. H. STUCKERT ... General Agent
 D. W. MORRISON, Traveling Frt. & Pass. Agt.
 410 Columbia Bldg., Ph. MADison 4-4238
 C. M. KOENIGS, General Agent, Passenger Dept., Davenport Hotel, Phone MA 4-5141
 W. J. RIDDELL ... General Agent,
 W. 221—First Avenue
 L. M. CARROLL ... Ticket Agent, Gt. Nor. Ry. Sta.
 VANCOUVER, WASH. K. M. ELLER, Agt. (Ph. 693-2561), SP&SR Sta.
 C. M. WAGNER (Phone 694-5151) ... Pass. Sta.

Agents of the Great Northern and Northern Pacific Rys. throughout the United States are the direct representatives of the Spokane, Portland and Seattle Railway Co., Oregon Trunk Railway and Oregon Electric Railway Co.

