

Spokane, Washington known as the Queen City of the Inland Empire is the Eastern Terminus of the S. P. & S. Railway. It is the second largest city in the State of Washington and is the center of a vast agricultural and industrial empire.



NOVEMBER 5, 1954
Subject to change without notice



The Northwest's Own Railway
THROUGH SERVICE
VIA

NORTH COAST
LIMITED

EMPIRE
BUILDER



TIME TABLES

Pacific Standard Time

TRAVEL THE
**COLUMBIA RIVER
SCENIC ROUTE
THROUGH THE
CASCADE RANGE**

NOVEMBER 5, 1954
Subject to change without notice



The Northwest's Own Railway
THROUGH SERVICE
VIA

NORTH COAST
LIMITED

EMPIRE
BUILDER



TIME TABLES

Pacific Standard Time

TRAVEL THE
**COLUMBIA RIVER
SCENIC ROUTE
THROUGH THE
CASCADE RANGE**



TRANSCONTINENTAL TRAIN SERVICE—BETWEEN PORTLAND, PASCO AND EAST

SPOKANE, PORTLAND AND SEATTLE, NORTHERN PACIFIC AND CHICAGO, BURLINGTON AND QUINCY RAILWAYS

West Bound, Read Down			Eastbound, Read Up			
Daily C. B. & Q. 49	Daily The Mainstreeter C. B. & Q. 47	Daily North Coast Ltd. No. 25	Chicago, Burlington and Quincy Railway (Central Time)	Daily North Coast Ltd. No. 26	Daily The Mainstreeter C. B. & Q. 48	Daily C. B. & Q. 22
1.00	11.00	11.30	Lv Chicago (Union Station).....Ar	2327	1.45	8.00
1.36	11.41	12.06	Lv Aurora.....Ar	2289	12.59	7.09
3.17	1.59	1.47	Lv Savanna.....Ar	2182	11.11	4.55
5.26	4.41	3.56	Ar LaCrosse.....Lv	2030	9.04	2.10
7.45	7.35	6.15	Ar St. Paul (Union Station).....Lv	1900	7.00	8.25
N.P. 3			Northern Pacific Railway			N.P. 2
9.30	8.40	6.30	Lv St. Paul (Union Station).....Ar	1900	6.40	7.25
10.15	9.15	7.00	Lv Minneapolis (Hen. Av. Stn.)Ar	1890	6.10	6.50
The Mainstreeter			Vista-Dome North Coast Limited			The Mainstreeter
5.05	7.00	5.05	Lv Duluth.....Ar	1881	7.55	12.35
5.17	7.14	5.17	Ar Superior.....Lv	1877	7.39	12.19
1.35	11.51	9.21	Lv Staples.....Ar	1733	3.44	7.45
5.50	2.30	11.25	Ar Fargo.....Lv	1622	1.42	5.12
8.55	4.27	1.06	Ar Jamestown.....Lv	1530	12.02	3.10
11.48	6.30	2.49	Ar Bismarck.....Lv	1428	10.19	1.70
11.30	5.57	2.11	Ar Mandan (Mountain Time).....Lv	1423	9.07	11.58
2.25	8.10	4.00	Ar Dickinson.....Lv	1322	7.12	9.53
5.05	10.43	6.02	Ar Glendive.....Lv	1217	5.10	7.23
12.35	7.27	7.27	Ar Miles City.....Lv	1138	3.44	5.27
1.48	8.27	8.27	Ar Forsyth.....Lv	1093	2.49	4.18
4.25	10.28	10.28	Lv Billings.....Ar	991	1.45	1.45
x11.30			Lv Gardiner (Yel. Nat'l Park).....Ar	929	x10.15	
BUS			Lv Livingston.....Ar	875	10.46	11.00
11.50	8.34	1.21	Ar Bozeman.....Lv	851	10.06	10.06
2.00	4.55	7.00	Ar Butte.....Lv	756	7.30	7.00
3.55	6.18	3.54	Ar Helena.....Lv	753	6.26	5.05
5.00	7.10	4.55	Ar Garrison.....Lv	704	5.08	3.15
8.20	7.18	6.18	Ar Missoula.....Lv	636	2.17	12.15
9.10	7.52	7.10	Ar Paradise (Pacific Time).....Lv	565	9.57	9.10
10.15	8.45	10.45	Ar Sandpoint.....Lv	446	9.20	8.10
			Ar Athol.....Lv	418	8.25	8.10
			Ar Spokane (N.P. Station).....Lv	378	10.45	8.10
N.P. 5			Lv Spokane (N.P. Station).....Ar	378	10.38	8.10
7.15	9.10	10.53	Ar Pasco.....Lv	231	7.50	4.45
10.30	12.15	1.33				
S.P.S. No. 5			Spokane, Portland and Seattle Railway			S.P.S. No. 6
10.40	1.05	3.10	Lv Pasco.....Ar	231	7.15	2.40
1.15	3.25	5.15	Ar Wishram.....Lv	106	5.10	12.30
3.55	5.30	7.05	Ar Vancouver.....Lv	10	3.23	9.55
4.25	*6.00	7.30	Ar Portland (Union Station).....Lv	0	3.00	10.00

a—Stops to let off or pick up revenue passengers from or to Missoula and east or Pasco and west where scheduled to stop.
 x Bus, Winter Season.
 * Passengers may remain in sleeping cars at Portland until 7:30 A.M.
 ① Arrive ② Leave Glendive daily except Sunday.
 ③ Leave St. Paul daily except Saturday.

Light face figures denote A.M. time. Bold face figures denote P.M. time. Ar. Arrive. Lv. Leave. /Stop on Signal.

EQUIPMENT

VISTA-DOME NORTH COAST LIMITED BETWEEN CHICAGO AND PORTLAND All Lightweight Equipment S. P. & S. 1-2, N. P. 25-26, C. B. & Q. 25-26

OBSERVATION LOUNGE-BUFFET CAR—Between Pasco and Portland. (Car 10 westbound, Car 20 eastbound.)
OBSERVATION LOUNGE-SLEEPING CAR—Between Chicago and Pasco. Four bedrooms, 1 compartment, spacious lounge, radio, library, writing desk. Buffet service. (259 westbound, 269 eastbound.)
VISTA-DOME SLEEPING CAR—Between Chicago and Portland. Newest type all-room car. 4 Roomette, 4 Single and 4 Double Bedrooms. (258 westbound, 268 eastbound.)
STANDARD SLEEPING CAR—Between Chicago and Portland. Newest type all-room car. 3 bedrooms, 1 compartment, 6 roomettes, 8 duplex roomettes. (257 westbound, 267 eastbound.)
VISTA-DOME COACH—Between Chicago and Portland. Chaise lounge "sleepy hollow" seats with leg rests for reclining full length. (C253 westbound, C263 eastbound). Seats reserved in advance. No extra charge.
COACH-BUFFET-LOUNGE—Between Chicago and Pasco. De Luxe accommodations expressly for coach passengers. Writing desk, radio, magazines. Sandwiches and beverages.
DINING CAR SERVICE—Between Chicago and Portland. Club breakfasts, \$1.25 to \$1.95; Table d'hote dinner, \$2.90; Table d'hote luncheon, \$2.10. Special plate luncheons and dinners, \$1.80. Also a la carte service.
TICKETS—All classes of regular and reduced rate rail tickets will be honored for passage on the North Coast Limited.

THE MAINSTREETER BETWEEN CHICAGO AND PORTLAND S. P. & S. 3-4, N. P. 1-2, C. B. & Q. 47-48

OBSERVATION LOUNGE-BUFFET CAR—Between Spokane and Portland. (Car 30 westbound, Car 40 eastbound.)
OBSERVATION LOUNGE-BUFFET CAR—Between St. Paul and Pasco. 8 Sections. (Car 106 westbound, car 206 eastbound.)
STANDARD SLEEPING CARS—Between Chicago and Pasco 8 Duplex Roomettes, 3 Double Bedrooms, 1 Compartment and 6 Roomettes. (105 westbound, 205 eastbound.)
 Passengers will make station taxicab transfer at Spokane at no additional cost to modern standard cars from and to Chicago.
DINING CAR SERVICE—Between St. Paul and Pasco.
RECLINING SEAT COACHES—Between Chicago and Pasco. Between Spokane and Portland.

S. P. & S. No. 5-6, (Diesel Power), N. P. No. 5-6 COLUMBIA RIVER EXPRESS BETWEEN SPOKANE, PASCO AND PORTLAND

Deluxe reclining chair car, Pasco-Portland. Reserved seat coach, Cafe car and deluxe coaches, Spokane and Pasco.



TRANSCONTINENTAL TRAIN SERVICE—BETWEEN PORTLAND, SPOKANE AND EAST

VIA CHICAGO, BURLINGTON & QUINCY AND GREAT NORTHERN, SPOKANE, PORTLAND AND SEATTLE RAILWAYS

Westbound, Read Down			Eastbound, Read Up		
Daily Western Star No. 47	Daily Empire Builder No. 49	Chicago, Burlington and Quincy Railroad (Central Time)	Miles from Portland	Daily Empire Builder No. 44	Daily Western Star No. 48
11.00	1.00	Lv Chicago (Un. Stn.).....Ar	2260	2.00	8.00
11.41	1.36	Ar Aurora.....Lv	2222	1.18	7.09
1.59	3.17	Ar Savanna.....Lv	2115	11.30	4.55
4.41	5.26	Ar LaCrosse.....Lv	1963	9.17	2.10
7.35	7.45	Ar St. Paul (Un. Stn.).....Lv	1833	7.15	11.45
C'ch's only No. 27			Great Northern Ry.		
9.30	8.30	8.15	Lv St. Paul (Un. Stn.).....Ar	1833	7.00
10.03	9.00	8.45	Lv Minneapolis (GN Stn.).....Ar	1822	6.25
11.45	10.18	10.18	Lv Willmar.....Ar	1731	4.40
1.55	12.05	12.05	Ar Breckenridge.....Lv	1618	2.30
3.00	12.33	12.33	Ar St. Cloud.....Lv	1493	1.15
5.18	1.55	1.15	Ar Fergus Falls.....Lv	1571	1.15
7.25	3.40	3.08	Ar Grand Forks.....Lv	1447	4.28
8.30	4.55	4.55	Ar New Rockford.....Lv	1338	11.19
10.03	10.56	7.15	Ar Williston (Central Time).....Lv	1218	7.10
9.25	10.10	6.20	Lv Williston (Mountain " ")Ar	1218	6.00
12.25	1.20	6.10	Ar Glasgow.....Ar	1062	3.20
3.40	4.40	12.10	Ar Havre.....Ar	909	12.22
7.45	7.45	3.30	Ar Great Falls.....Lv	903	9.35
8.00	8.00	8.00	Lv Great Falls.....Ar	903	9.20
6.35	11.00	2.10	Lv Shelby.....Ar	804	10.20
7.12	11.30	2.43	Ar Cut Bank.....Ar	780	9.50
8.25	12.30	2.43	Ar Glacier Park.....Ar	733	6.40
10.20	2.07	2.43	Ar Belton.....Ar	676	3.15
10.49	2.29	2.43	Ar Columbia Falls.....Ar	661	2.45
10.15	1.35	5.10	Lv Kalispell.....Ar	676	7.10
11.15	2.50	6.05	Lv Whitefish.....Ar	653	6.35
2.00	5.15	6.05	Ar Libby.....Ar	537	11.55
2.30	5.45	9.05	Ar Troy (Mountain Time).....Lv	519	3.40
1.40	4.50	8.05	Lv Troy (Pacific Time).....Ar	519	2.40
2.35	5.40	8.05	Ar Bonner's Ferry.....Ar	488	9.40
3.28	6.22	8.15	Lv Sandpoint.....Ar	454	9.05
5.50	8.15	11.30	Ar Spokane (GN Stn.).....Lv	379	11.15
No. 3			Spokane, Portland and Seattle Railway		
9.15	9.15	12.06	Lv Spokane (GN Stn.).....Ar	379	10.35
1.05	1.05	3.10	Ar Pasco.....Lv	231	7.30
3.25	3.25	5.15	Ar Wishram.....Lv	106	5.10
5.30	5.30	7.05	Ar Vancouver.....Lv	10	3.23
*6.00	*6.00	7.30	Ar Portland (Un. Stn.).....Lv	0	3.00

THE STREAMLINED WESTERN STAR (Lightweight Streamlined Equipment) CHICAGO-PORTLAND NO EXTRA FARE CB&Q 47-48, GN 3-4, SP&S 3-4 ALL CLASSES OF TICKETS HONORED

Observation-Lounge-Buffet Car between Spokane and Portland—contains 8 Sections (Car 30 Westbound, Car 40 Eastbound).
Observation-Lounge Car between Chicago and Spokane—Buffet service and radio reception. Also contains 1 Drawing Room and 2 Double Bedrooms (39 Westbound, 49 Eastbound).
Standard Sleeping Cars offering modern Pullman accommodations between Chicago and Portland, one car containing 4 Sections, 8 Duplex Roomettes and 4 Double Bedrooms. Double Bedrooms are connecting and may be sold ensuite at drawing room rate (32 Westbound, 42 Eastbound).
Streamliner Day-Nite Coaches between Chicago and Spokane. Reclining seats with leg rests forming a couch for sleeping. Wide windows and individual reading lights, modern lounge and dressing rooms. Radio reception. Deluxe coaches between Spokane and Portland. (Seats reserved June 14 to Sept. 9 only.)
Buffet Service between Spokane and Portland.
Coffee Shop Car between St. Paul and Spokane. Selling beer, liquor, fruit, candy bars and magazines throughout the day.
Dining Car Service between St. Paul and Spokane. Traditional famous Great Northern meals. Club breakfasts, plate luncheons, table d'hote luncheons, plate dinners, table d'hote dinners. Also a la carte service for all meals.

† Except Sunday. * Passengers may remain in sleeping cars at Portland until 7:30 A. M. c—No. 1 stops at Glasgow to discharge revenue passengers from Minot and East and to receive revenue passengers for Spokane and West where No. 1 is scheduled to stop. d—No. 2 stops at Glasgow to discharge revenue passengers from Spokane and West and to receive revenue passengers for Minot and East where No. 2 is scheduled to stop. e—No. 1 stops at Cut Bank to discharge revenue passengers from Williston and east and to receive revenue passengers for scheduled stops Spokane and West. g—No. 2 stops at Cut Bank to discharge revenue passengers from Spokane and West and to receive revenue passengers for scheduled stops Williston and East. k—No. 3 stops at Glacier Park and Belton to receive revenue passengers for Spokane and West where No. 3 is scheduled to stop and to discharge revenue passengers from Great Falls and East. l—No. 4 stops at Belton and Glacier Park to discharge revenue passengers from Spokane and West and to receive revenue passengers for Great Falls and East where No. 4 is scheduled to stop. ② Bus service, rail tickets honored.

Light face figures denote A.M. time. Bold face figures denote P.M. time. Ar. Arrive. Lv. Leave. /Stop on Signal.

EQUIPMENT

THE STREAMLINED EMPIRE BUILDER (Lightweight Streamlined Equipment Only) CHICAGO-PORTLAND NO EXTRA FARE CB&Q 49-44, GN 1-2, SP&S 1-2

Standard Sleeper-Club-Lounge car with 6 Roomettes, 3 Double Bedrooms, 25 lounge seats between Spokane and Portland. (Car 10 Westbound, Car 20 Eastbound.)
Observation-Lounge car between Chicago and Spokane. Buffet service and radio reception.
Standard Sleepers offering seven latest types of Pullman accommodations. Drawing Rooms, Compartments, Double Bedrooms, Roomettes, Duplex-Roomettes, Lower and Upper Berths. Between Chicago and Portland, two sleepers (11-12 Westbound, 21-22 Eastbound). Advance reservations of Pullman accommodations may be made at any time prior to scheduled departure except as follows: Pullman space on the "Empire Builder" for intermediate travel between any two stations west of Havre or between any two stations east of Havre may not be reserved until 24 hours prior to train departure time eastbound from Portland or westbound from Chicago.
Streamlined Day-Nite Coaches. Reclining seats with leg rests forming a couch for sleeping. Individual reading lights. Commodious lounge and dressing rooms—two lounges for women with curtain dressing alcoves. Radio reception. Between Chicago and Portland one 48-seat coach (103 Westbound, 203 Eastbound). Advance coach seat reservations should be made so that definite coach seat assignment may be obtained before departure. All seats reserved in advance (including seats for children under 5 years of age) at no extra charge.
Deluxe Coach between Spokane and Portland, 60 reclining seats. (Seats not reserved.)
Buffet service between Spokane and Portland.
The Ranch Coffee Shop-Lounge Car—Between Chicago and Spokane. Lounge facilities for all passengers including coach passengers. Radio reception. Coffee shop with counter and table service at economical meal prices. Club breakfasts: fruits and fruit juices, cereals, eggs, toast, rolls, doughnuts and beverages. Plate luncheons and dinners. Soups, sandwiches, salads, desserts and beverages available throughout the day.
Dining car with the most modern furnishings, decor and semi-private dining sections between Chicago and Portland. Radio reception. Traditional famous Great Northern meals. Club breakfasts, plate luncheons, table d'hote luncheons, plate dinners, table d'hote dinners. Also a la carte service for all meals.
 To avoid standing in line for dinner, passengers have the choice of one hour dining periods beginning at 5 P.M. Passenger Representatives on the train arrange dinner reservations.
Tickets. Tickets endorsed Clergy, Charity, Employee, D.V.S., V.A.H., Blind and Attendant, Blind and Guide Dog, Circus, Show, Banana Messenger, Drover's or Caretaker's tickets and Livestock Contracts will not be honored.
Baggage. Limited amount of checked baggage will be handled.

Light face figures denote A.M. time. Bold face figures denote P.M. time. Ar. Arrive. Lv. Leave. /Stop on Signal.



SPOKANE, PORTLAND AND SEATTLE RAILWAY SYSTEM

S. P. & S. RY.—OREGON TRUNK RY.—OREGON ELECTRIC RY.—(Subsidiaries of Northern Pacific and Great Northern Railways)

PORTLAND — WISHRAM — PASCO — SPOKANE TRAINS

Westbound, Read Down

Eastbound, Read Up

SPS No. 3 Daily	NP 1 SPS 3 Daily	NP 5 SPS 5 Daily	NP No. 25 SPS No. 1 Daily	SPS No. 1 Daily	Ele-va.	Spokane, Portland and Seattle Railway	Miles from Portland	SPS 6 Daily	SPS No. 2 Daily	NP No. 26 Daily	SPS 4 NP 2 Daily	SPS No. 4 Daily	SPECIAL STOPS No. 1 & 2 Stops only as shown
9.15	9.10	7.15	10.53	*12.06	1871 Lv.	Spokane (business capital of Great No. Station Inland Empire) Ar	379.5	10.35	10.38	8.10	6.35		No. 3. At any station to discharge revenue passengers from east of Spokane. At any station east of Pasco to receive revenue passengers for Vancouver and Portland. At any station west of Pasco to discharge revenue passengers from Spokane. No. 4. At any station to receive revenue passengers destined east of Spokane. At any station west of Pasco to receive revenue passengers from Portland or Vancouver. Stops to receive passengers made only upon advance arrangements through Agent. Stops to discharge passengers made upon application to conductor.
10.07	N.P. Ry. No. 1	N.P. Ry. No. 5	Vista-Dome Limited	Stream-lined Empire Builder	1920 Lv.	South Cheney (Vast plateau of Amber Eastern Wash.) Ar	377.5	8.10	8.10	5.49	5.30		
10.24	Spokane to Pasco Provisional Stops at Cheney Sprague Ritzville Lind Connell	Spokane to Pasco Stopping at Cheney Sprague Ritzville Lind Connell	Spokane to Pasco Stopping at Cheney Sprague Ritzville Lind Connell	Spokane to Pasco Stopping at Cheney Sprague Ritzville Lind Connell	2090 Ar	Rodna	343.3	N.P. Ry. No. 6	NP Ry. No. 2	5.49	5.30		
10.51	11.04	11.15	11.31	12.03	12.45	12.45	12.45	12.45	12.45	12.45	12.45	12.45	
1.05	1.12	1.40	3.10	3.10	358 Lv.	PASCO	231.3	7.15	7.15	2.40	2.40		
1.12	1.12	1.40	3.10	3.10	352 Ar	Kennewick (Columbia River Crossing)	228.5	3.21	3.21	2.40	2.40		
1.53	1.53	1.53	1.53	1.53	352 Ar	Finley	223.9	3.14	3.14	2.40	2.40		
1.53	1.53	1.53	1.53	1.53	352 Ar	Yellepit (Named after Indian Chief)	215.8	3.03	3.03	2.40	2.40		
1.53	1.53	1.53	1.53	1.53	351 Ar	Berrian met by Lewis & Clark, 1805-6)	203.3	2.47	2.47	2.40	2.40		
1.53	1.53	1.53	1.53	1.53	349 Ar	No. McNary (McNary Dam)	195.2	2.38	2.38	2.40	2.40		
1.53	1.53	1.53	1.53	1.53	323 Ar	Plymouth (Opp. Old Oregon Trail)	192.0	2.33	2.33	2.40	2.40		
1.53	1.53	1.53	1.53	1.53	266 Ar	Paterson	179.8	2.17	2.17	2.40	2.40		
1.53	1.53	1.53	1.53	1.53	259 Ar	Whitcomb	170.4	2.05	2.05	2.40	2.40		
1.53	1.53	1.53	1.53	1.53	241 Ar	Alderdale	162.2	1.54	1.54	2.40	2.40		
1.53	1.53	1.53	1.53	1.53	242 Ar	McCredie	157.6	1.48	1.48	2.40	2.40		
1.53	1.53	1.53	1.53	1.53	230 Ar	Roosevelt	146.7	1.34	1.34	2.40	2.40		
1.53	1.53	1.53	1.53	1.53	216 Ar	Sundale	140.8	1.24	1.24	2.40	2.40		
1.53	1.53	1.53	1.53	1.53	203 Ar	Goodnoe	130.8	1.12	1.12	2.40	2.40		
1.53	1.53	1.53	1.53	1.53	179 Ar	Cliffs (Mt. Hood, 11,225 ft. visible)	119.7	1.05	1.05	2.40	2.40		
1.53	1.53	1.53	1.53	1.53	175 Ar	Maryhill	114.0	1.00	1.00	2.40	2.40		
1.53	1.53	1.53	1.53	1.53	166 Ar	WISHRAM (Mt. Hood visible) Ar	106.1	12.35	6.10	6.10	12.30	12.30	
1.53	1.53	1.53	1.53	1.53	166 Ar	WISHRAM (Celilo Falls) Ar	106.1	12.25	5.08	5.08	12.20	12.20	
1.53	1.53	1.53	1.53	1.53	161 Ar	Avery	103.3	12.20	5.08	5.08	12.20	12.20	
1.53	1.53	1.53	1.53	1.53	123 Ar	Northdallas (Mt. Hood visible)	93.5	12.08	5.08	5.08	12.00	12.00	
1.53	1.53	1.53	1.53	1.53	101 Ar	LYLE (Memaloose Indian burying)	85.3	11.57	4.35	4.35	11.44	11.44	
1.53	1.53	1.53	1.53	1.53	101 Ar	Bingen-White Salmon (Mt. Hood)	75.9	11.42	4.35	4.35	11.44	11.44	
1.53	1.53	1.53	1.53	1.53	101 Ar	Underwood (Apple country)	72.5	11.33	4.35	4.35	11.44	11.44	
1.53	1.53	1.53	1.53	1.53	101 Ar	Hood (Mt. Hood, 11,225 ft. visible)	70.9	11.29	4.35	4.35	11.44	11.44	
1.53	1.53	1.53	1.53	1.53	99 Ar	Cooks (Mitchell Point to south)	65.8	11.22	4.35	4.35	11.44	11.44	
1.53	1.53	1.53	1.53	1.53	98 Ar	Carson	57.7	11.11	4.35	4.35	11.44	11.44	
1.53	1.53	1.53	1.53	1.53	98 Ar	Stevenson (Cascades of Columbia)	54.3	11.05	4.13	4.13	11.19	11.19	
1.53	1.53	1.53	1.53	1.53	74 Ar	North Bonneville (Bonneville Dam)	49.3	10.55	4.13	4.13	11.19	11.19	
1.53	1.53	1.53	1.53	1.53	51 Ar	Skamania (Beacon Rock, alt. 840 ft.)	42.1	10.45	4.13	4.13	11.19	11.19	
1.53	1.53	1.53	1.53	1.53	48 Ar	Prindle (Columbia River)	37.8	10.39	4.13	4.13	11.19	11.19	
1.53	1.53	1.53	1.53	1.53	48 Ar	Mount Pleasant (Mt. Hood, 11,225 ft.)	32.0	10.31	4.13	4.13	11.19	11.19	
1.53	1.53	1.53	1.53	1.53	48 Ar	Trail Washougal (Large woolen mills)	28.0	10.26	4.13	4.13	11.19	11.19	
1.53	1.53	1.53	1.53	1.53	48 Ar	Camas (Large paper and pulp mills)	23.8	10.19	4.13	4.13	11.19	11.19	
1.53	1.53	1.53	1.53	1.53	48 Ar	Fisher	19.8	10.09	4.13	4.13	11.19	11.19	
1.53	1.53	1.53	1.53	1.53	46 Ar	VANCOUVER (founded 1825) Ar	10.0	9.55	3.23	3.23	10.25	10.25	
1.53	1.53	1.53	1.53	1.53	46 Ar	VANCOUVER	10.0	9.51	3.20	3.20	10.20	10.20	
1.53	1.53	1.53	1.53	1.53	46 Ar	North Portland (Pac. Int. Lvst. Exp.)	8.6	9.47	3.20	3.20	10.20	10.20	
1.53	1.53	1.53	1.53	1.53	46 Ar	East St. Johns (5 snow mts.)	7.0	9.44	3.20	3.20	10.20	10.20	
1.53	1.53	1.53	1.53	1.53	32 Ar	Union Station	0.0	9.30	3.00	3.00	10.00	10.00	
1.53	1.53	1.53	1.53	1.53	32 Ar	PORTLAND (City of Roses) Ar	0.0	9.30	3.00	3.00	10.00	10.00	

FOR THROUGH SERVICE AND CONSIST OF ALL TRAINS, SEE PRECEDING PAGES 2 and 3.

A TRANS-CONTINENTAL SYSTEM OF RAILWAYS THROUGH AMERICA'S WONDERLAND

Traversing the northern states between the Pacific Northwest and Chicago presents a veritable wonderland offering passengers a splendid variety of ever-changing scenery.

Over these lines, between Portland and Chicago, are operated four of America's famous trains, the Streamlined

Empire Builder and the Streamlined Western Star, via S.P.&S. Spokane, G.N. St. Paul, C.B. & Q. Chicago, and the Streamlined North Coast Limited and The Mainstreeter via S. P. & S. Pasco, N. P. St. Paul and C. B. & Q. Chicago where connections are made to all points east and south.

These trains provide passengers with every feature of modern railway travel for their comfort, and pleasure.

Light face figures denote A.M. time. Bold face figures denote P.M. time. Ar. Arrive. Lv. Leave. / Stop on Signal.

SPOKANE, PORTLAND AND SEATTLE RAILWAY SYSTEM

S. P. & S. RY.—OREGON TRUNK RY.—OREGON ELECTRIC RY.—(Subsidiaries of Northern Pacific and Great Northern Railways)

PORTLAND - REDMOND - BEND TRAINS

Read Down		Read Up	
Ele-va.	No. 103 Daily Ex. Sun.	Miles from P't'd	No. 102 Daily Ex. Sun.
3618	7.00	Lv Bend	7.00
3572	7.11	Deschutes	7.35
2983	7.30	Redmond	6.15
2918	7.35	Prineville Jct.	5.40
2863	7.40	Tarabonne	5.45
2850	7.52	Opal City	5.31
2624	8.02	Culver	5.18
2517	8.12	Metolius	5.10
2458	8.25	Madras	5.00
2169	8.35	Paxton	4.34
1787	8.51	Gateway	4.18
1254	9.13	South Jet	3.56
	9.18	Axford	3.49
1203	9.24	Kaskela	3.45
1074	9.40	Hardy	3.31
1012	9.50	Dant	3.19
960	9.57	Nant	3.11
852	10.20	Maupin	2.53
788	10.28	Tuskan	2.45
783	10.35	Sherar	2.45
606	10.51	Oakbrook	2.23
510	11.10	Sinamox	2.04
508	11.18	Dike	1.55
354	11.35	Lockit	1.38
286	12.01	Moody	1.13
166	12.15	Ar Wishram	1.00

EQUIPMENT BETWEEN PORTLAND AND BEND

Trains Nos. 4-102 and 103-3. Coaches daily between Portland and Wishram and Daily except Sunday between Wishram and Bend. Observation Lounge Buffet cars daily between Portland and Wishram. See pages 2, 3 and 4.

RAIL TRAVEL CREDIT CARD PLAN

permits purchase of Rail and Pullman tickets from any S. P. & S. Ry. Co. agent on Credit by securing a Credit Card from the Rail Travel Credit Agency, Room 436 Union Station, Chicago, Ill.

"DRIVURSELF" RAIL-AUTO SERVICE

provides a new automobile at your destination or stop over point. Ask the agent for further details on any of the above plans.



ALL-YEAR SEASHORE RESORT

Surrounded by evergreen forests and a background of mountains, Clatsop Beach has every facility for visitors—golf courses, fishing, amusement places, sea foods, pure water, good hotels, restaurants, cottages, and camps. Along the expanding Columbia River, from Portland to Astoria.

Light face figures denote A.M. time. Bold face figures denote P.M. time. Ar. Arrive. Lv. Leave. / Stop on Signal. t Telegraph Office.

PORTLAND — ST. HELENS

RAINIER—ASTORIA—CLATSOP BEACH PASSENGER SERVICE

handled by the

PACIFIC GREYHOUND LINES

Westbound—Read Down

Eastbound—Read Up

Dly.	Dly.	Dly.	Dly.	Mis.	Dly.	Dly.	Dly.	Dly.
6.00	5.45	9.30	8.00	0	Lv PORTLAND (Cent. Bus Depot) Ar	12.02	10.50	9.15
6.18			8.18	9	Lv Linnton	11.44		8.57
6.42			8.42	21	Lv Scappoose	11.20		8.33
6.55			8.55	29	Lv Houlton	11.07		8.20
7.00			9.00	30	Ar ST. HELENS	11.02		8.15
7.33			9.44	49	Lv Rainier	10.29		7.42
8.21			10.21	67	Lv Clatskanie	9.43		6.56
9.11			11.11	96	Lv Svenson	8.50		6.05

S. P. & S. Ry. Local tickets will not be issued or honored on Pacific Greyhound Lines between above stations.

Interline tickets routed S. P. & S. Ry. between above stations and stations east of Portland on or via S. P. & S. Ry. will be honored on Pacific Greyhound Lines.

PACIFIC TRAILWAYS

Read Down PORTLAND - BEND Read Up

Run *6	Run 14	Run 2	Run 1	Run *3	Run 5
5.45	3.00	7.30	Lv PORTLAND	8.45	12.45
9.05	6.25	10.52	Ar Madras	5.00	9.15
9.17			Ar Metolius		9.03
9.24			Ar Culver		8.55
9.48	7.08	11.38	Ar Redmond	4.20	8.30
10.15	7.40	12.10	Ar BEND	4.00	8.00

Rail tickets routed via OT -- S. P. & S. Railways from or to Central Oregon points will be honored to or from Portland, Oregon by the Mt. Hood Stages (Pacific Trailways). Ask agent for details. * Except Sundays and holidays.

FREIGHT SERVICE

Route your freight shipments via the Spokane, Portland and Seattle Railway for fast and dependable service—between Portland, Astoria, Pasco, Spokane, Yakima, Walla Walla, Pendleton, Lewiston, Bend and all points east and south.

Let Us Handle Your Transportation Problems

FREIGHT SERVICE ONLY

Portland — St. Helens — Astoria Line

Miles	STATIONS	Miles	STATIONS
0	Portland	71.2	Westport
4.5	Froman	73.5	Wauna
6.7	Fry	76.8	Bradwood
8.4	Goltra	86.5	Knappa
10.3	Tallman	99.7	Astoria
14.8	Lebanon	105.6	Warrenton
15.9	Weldwood	108.3	Camp Clatsop
20.2	Waterloo	118.0	Seaside
22.1	Nye		
28.8	Sweet Home		
31.9	Foster		

Operated by PACIFIC GREYHOUND LINES SEE SCHEDULES ABOVE



FREIGHT SERVICE ONLY

is operated on the following Branches

S. P. & S. Railway



SPOKANE, PORTLAND AND SEATTLE RAILWAY SYSTEM

CONNECTIONS AT PORTLAND
S. P. & S. RY. - OREGON TRUNK RY. - OREGON ELECTRIC RY. - (Subsidiaries of Northern Pacific and Great Northern Railways)

PORTLAND - PUGET SOUND - BRITISH COLUMBIA

Northern Pacific Ry. - Great Northern Ry. - Union Pacific R. R.

Northbound—Read Down				Southbound—Read Up			
N.P.	G.N.	N.P.	U.P.	N.P.	G.N.	N.P.	U.P.
401	459	407	457	402	460	408	458
Daily	Daily	Daily	Daily	Daily	Daily	Daily	Daily
11.45	5.00	9.40	8.00	6.45	12.20	4.30	9.15
12.11	5.25	9.59	8.21	6.20	11.59	4.09	8.51
1.05				5.18	11.25		
1.35	6.05	10.38	9.01	5.00	11.14	3.24	8.02
1.55				4.20	11.02		
3.00	6.47	11.22	9.43	3.25	10.29	2.39	7.14
3.25	6.57	11.33	9.53	3.00	10.22	2.32	7.05
	7.20	11.56		2.08	9.58	2.08	6.37
5.00	8.05	12.41	11.01	1.15	9.16	1.26	5.52
k 6.45	k 9.15	k 1.40	u11.59	k 11.45	k 8.20	k 12.30	u 4.45
8.10	8.15	2.00	6.00	8.15	10.10	12.15	4.25
9.01	9.25	2.50	6.55	8.30	9.16	11.25	3.30
10.19	11.32	4.10	8.30	7.45	7.40	10.02	1.57
11.55	2.00	5.40	9.55	4.10	6.15	8.25	12.30

† Daily except Sunday b To and from Olympia by bus k King Street Station
p Stops from Portland and beyond u Union Station

CONNECTIONS AT SPOKANE AND PASCO

Bus Ex. Sun.	Bus Dly	Great Northern Ry.	Bus Dly	Bus Dly
2.15	8.30	Lv. Spokane Ar	1.20	7.30
2.50	9.02	Ar. Deer Park	12.45	6.50
3.50	9.55	Chewelah	11.50	5.55
4.40	10.50	Colville	11.15	5.25
4.55	11.02	Kettle Falls	10.40	4.50
5.40	11.53	Northport	9.50	4.05
6.30	12.50	Ar. Trail, B.C. Lv	9.00	3.15
	4.20	Ar. Nelson		11.40

SOUTHERN PACIFIC COMPANY

Southbound—Read Down Northbound—Read Up

329	19	11	9	12	20	10	330	
7.30	10.05	4.45	7.45	Lv. Portland Ar	9.20	7.55	11.30	7.25
9.20	11.56	5.55	8.55	Ar. Salem Lv	8.02	6.55	10.15	5.37
10.32	12.45	6.27	9.24	Ar. Albany Lv	7.32	6.15	9.44	4.42
2.42	2.42	8.18	9.55	Ar. (a) Corvallis (a) Lv	6.20	4.30	7.32	11.25
11.42	1.40	7.09	10.05	Ar. Eugene Lv	6.52	4.07	9.00	3.12
	7.40	11.30	2.19	Ar. Klamath Falls Lv	2.30	9.55	4.46	
12.50				Ar. Cottage Grove Lv				2.13
3.10				Ar. Roseburg Lv				12.16
7.12				Ar. Grants Pass Lv				8.13
8.30				Ar. Medford Lv				7.08
9.05				Ar. Ashland Lv				6.30
	1.45	4.07	6.36	Ar. Redding Lv	10.06	3.15	12.30	
	7.25	7.25	9.45	Ar. (a) Sacramento (a) Lv	6.20	8.25	9.15	
	6.58	7.33	9.57	Ar. Martinez Lv	6.35	9.05	9.07	
	8.00	8.25	10.45	Ar. Oakland, 16th St. Lv	5.45	8.09	8.23	
	8.10	8.35	10.55	Ar. Oakland Pier Lv	5.35	8.00	8.15	
	8.50	9.15	11.30	Ar. San Francisco Lv	5.00	7.30	7.45	
	10.30	7.25	10.30	Ar. Los Angeles Lv	7.20	7.20	5.50	

a—via P G Lines Bus from and to Albany.

EQUIPMENT OF TRAINS

Trains 9-10, Shasta Daylight—Streamlined Air Conditioned Train-Radio Parlor Obs. Reclining Chair Cars, Diner, Coffee Shop and Tavern Car. Reserved seat Chair Car. Train 58 will take transfers from No. 9 at Martinez. Train 57 will make transfer to No. 10 at Oakland, 16th Street. Train 11-12, Cascade—(Streamlined, Air Conditioned). Between Portland and San Francisco. Standard sleeping cars with drawing rooms, compartments, bedrooms, roomettes, lounge and dining car. Reserved seat chair car. (Telephone service on Trains 11-12.) Train 19-20, Klamath—(Air Conditioned). Between Portland and San Francisco. Standard sleeping cars, diner, coaches and reclining chair cars. Train 329-330, Rogue River—Between Portland and Ashland. Standard Air Conditioned sleeping car, sections, compartments and drawing room and chair car.

SPOKANE, PORTLAND AND SEATTLE RAILWAY SYSTEM

S. P. & S. RY. - OREGON TRUNK RY. - OREGON ELECTRIC RY. - (Subsidiaries of Northern Pacific and Great Northern Railways)



Sleeping, Parlor Car and Reserved Seat Fares

Federal Tax Extra

For information only. Subject to change without notice.

BETWEEN AND	PORTLAND		SPOKANE		BETWEEN AND	PORTLAND		SPOKANE	
	Parlor Car Seat	Lower Berth Standard	Lower Berth Standard	Parlor Car Seat		Lower Berth Standard	Lower Berth Standard		
Billings Mont.		\$10.65	\$6.30		Medford Ore.	\$5.00	\$8.30		
Bingen-Wa. Salmon Wn.			5.00		Minneapolis Minn.	18.10	15.40		
Boston Mass.		28.90	25.65		Missoula Mont.	7.60	5.00		
Bozeman Mont.		9.60	5.80		New Orleans La.	25.25	23.30		
Buffalo N. Y.		25.65	22.60		New York N. Y.	28.90	25.65		
Butte Mont.		8.65	5.00		Oakland Calif.	8.30	12.25		
Camas Wn.			5.00		Omaha Neb.	18.10	15.40		
Chicago Ill.		21.00	18.10		Pasco Wn.	2.00	5.00		
Cincinnati Ohio		23.30	20.15		Philadelphia Pa.	27.95	24.95		
Cleveland Ohio		23.30	21.00		Pittsburgh Pa.	24.95	21.70		
Denver Colo.		14.80	13.80		Portland Ore.		5.00		
Detroit Mich.		23.30	20.15		Roseburg Ore.	5.00	6.90		
Duluth Minn.		18.10	15.40		St. Louis Mo.	20.15	17.55		
Eugene Ore.	1.15	5.00	6.15		St. Paul Minn.	18.10	15.40		
Fargo N. D.		16.35	12.80		Sacramento Calif.	8.00	11.95		
Gardiner Mont.		10.25	6.55		San Francisco Calif.	8.30	12.25		
Glacier Park Mont.		8.30	5.00		Seattle Wn.	1.45	5.00		
Grants Pass Ore.		5.00	8.00		Spokane Wn.	2.55	5.00		
Great Falls Mont.		10.25	6.15		Stevenson Wn.		5.00		
Havre Mont.		10.25	6.55		Tacoma Wn.	1.10	5.00		
Helena Mont.		8.65	5.00		Vancouver Wn.		5.00		
Kansas City Mo.		18.10	16.05		Washington D.C.	27.95	24.95		
Klamath Falls Ore.	2.65	5.00	8.30		Wishram Wn.	1.00	5.00		
Livingston Mont.		9.95	6.15						
Los Angeles Calif.		11.95	15.70						
Louisville Ky.		23.30	20.15						
Lyle Wn.			5.00						

© Railroad Owned Cars.

INDUSTRIAL LOCATIONS

National concerns continue to come to the Pacific Northwest and are choosing the Portland area as a location for their distribution warehouses. This is not only because of the tremendous growth in population but because of the strategic location for distribution throughout the Pacific Northwest, Alaska, the Hawaiian Islands, and the Orient. In addition, industries requiring lower power costs, better labor, or climatic working conditions, continue to locate throughout the area.

The SP&S RAILWAY SYSTEM owns and serves a great many industrial locations along the Columbia and Willamette Rivers as well as in the cities of both Oregon and Washington. Contact the Industrial Department for information.

R. W. WEST
General Industrial Agent
American Bank Building
P. O. Box 571
Portland 7, Oregon

Through sleeping cars not operated in all trains; fare applies for continuous trip via direct connections. A duplex roomette is a single private room with wash basin and toilet; a bedroom contains lower and upper berth, wardrobe and complete toilet facilities; a compartment is a private room with lower and upper berths, wash basin and toilet; a drawing room has a divan berth in addition.

Exclusive occupancy of a drawing room requires 1 1/2 adult rail tickets, or their equivalent; for 2 bedrooms en suite 2 adult tickets; for compartment, duplex-roomette, single or double bedroom, one adult ticket between S. P. & S. N. P. - G. N. and connections; 1-1/10 tickets between certain other lines; for section, one adult ticket for each berth.

RATES FOR SLEEPING CAR ACCOMMODATIONS

Where Standard Lower Berth Is	Upper Berth Is	Duplex-Roomette Is	ROOMETTE		BEDROOM		Bedroom Suite		Compartment		Drawing Room	
			For One Person	For Two Persons	For One Person	For Two or More Persons	For Two or More Persons	For One Person	For Two or More Persons	For One Person	For Two or More Persons	
\$ 5.00	\$ 3.80	\$ 5.55	\$ 7.00	\$ 8.00	\$ 9.50	\$11.05	\$19.00	\$11.30	\$14.45	\$15.05	\$19.00	
5.80	4.45	6.40	8.20	9.25	11.05	12.75	22.10	13.05	16.25	17.40	22.10	
6.15	4.70	6.85	8.65	9.90	11.65	13.50	23.30	13.85	17.70	18.45	23.30	
6.55	4.95	7.20	9.15	10.45	12.50	14.45	25.00	14.80	18.40	19.65	25.00	
6.90	5.30	7.65	9.65	11.05	13.10	15.20	26.20	15.55	19.85	20.70	26.20	
7.60	5.75	8.35	10.60	12.10	14.45	16.70	28.90	17.10	21.15	22.75	28.90	
8.00	6.05	8.85	11.10	12.65	15.20	17.60	30.40	18.00	22.55	24.00	30.40	
8.30	6.25	9.15	11.55	13.25	15.75	18.25	31.50	18.65	23.25	24.85	31.50	
8.65	6.55	9.55	12.00	13.80	16.40	19.00	32.80	19.45	24.60	25.90	32.80	
9.60	7.30	10.65	13.50	15.35	18.25	21.10	36.50	21.60	27.25	28.80	36.50	
9.95	7.55	11.00	13.90	15.85	18.90	21.90	37.80	22.35	27.85	29.85	37.80	
10.25	7.80	11.35	14.40	16.45	19.45	22.55	38.90	23.05	29.20	30.70	38.90	
10.65	8.05	11.75	14.90	16.95	20.25	23.40	40.50	23.90	29.95	31.90	40.50	
11.95	9.10	13.25	16.70	19.10	22.70	26.35	45.40	26.90	33.85	35.90	45.40	
12.25	9.30	13.45	17.10	19.55	23.30	26.95	46.60	27.55	34.45	36.75	46.60	
12.80	9.85	14.15	18.00	20.60	24.40	28.25	48.80	28.85	36.40	38.45	48.80	
13.80	10.50	15.25	19.30	22.10	26.20	30.35	52.40	31.05	38.85	41.40	52.40	
14.80	11.20	16.35	20.65	23.60	28.05	32.50	56.10	33.25	41.40	44.35	56.10	
15.40	11.75	16.95	21.55	24.55	29.25	33.95	58.50	34.65	43.30	46.25	58.50	
15.70	11.90	17.35	21.95	25.05	29.85	34.55	59.70	35.30	43.95	47.10	59.70	
16.05	12.20	17.65	22.45	25.60	30.50	35.30	61.00	36.10	45.20	48.15	61.00	
16.35	12.40	18.00	22.85	26.05	31.05	35.95	62.10	36.75	45.70	49.00	62.10	
17.55	13.35	19.30	24.50	28.00	33.35	38.60	66.70	39.45	49.40	52.60	66.70	
18.10	13.80	19.95	25.35	29.05	34.45	39.85	68.90	40.75	51.25	54.35	68.90	
20.15	15.35	22.20	28.25	32.25	38.25	44.30	76.50	45.30	56.40	60.40	76.50	
21.00	16.00	23.10	29.40	33.50	39.90	46.15	79.80	47.20	59.15	62.95	79.80	
21.70	16.15	23.85	30.25	34.55	41.15	47.65	82.30	48.75	60.50	65.05	82.30	
22.60	17.25	24.90	31.65	36.25	42.95	49.75	85.90	50.85	63.75	67.80	85.90	
23.30	17.70	25.65	32.60	37.20	44.30	51.25	88.60	52.40	65.10	69.85	88.60	
23.90	18.25	26.35	33.50	38.30	45.45	52.60	90.90	53.80	67.15	71.75	90.90	
24.95	19.00	27.50	34.95	39.85	47.45	54.90	94.90	56.20	69.80	74.85	94.90	
25.25	19.25	27.75	35.35	40.40	47.95	55.55	95.90	56.80	71.15	75.75	95.90	
25.65	19.50	28.25	35.80	40.95	48.70	56.40	97.40	57.75	71.75	76.95	97.40	
27.95	21.30	30.75	39.10	44.70	53.05	61.45	106.10	62.90	78.35	83.85	106.10	
28.90	22.00	31.85	40.50	46.30	54.95	63.65	109.90	65.10	81.10	86.75	109.90	

SAN FRANCISCO - LOS ANGELES - COAST LINE

72	76	94	98	M	95	76	71	99	
12.20	9.00	7.45	8.15	0	Lv. San Francisco Ar	6.45	9.00	5.30	6.00
1.45	10.03	8.49	9.08	47	Ar. San Jose Lv	5.40	7.40	4.20	5.08
9.00	3.12	1.27	1.24	248	Ar. San Luis Obispo Lv	12.45	2.35	9.35	12.53
12.40	5.58	4.00	3.41	367	Ar. Santa Barbara Lv	10.15	11.34	5.50	10.35
4.30	9.00	6.45	6.00	470	Ar. Los Angeles Lv	7.45	9.00	1.00	8.15

SAN FRANCISCO - LOS ANGELES - VALLEY LINE

60	58	56	52	M	57	55	51	59
	8.00	9.30	7.20					



SPOKANE, PORTLAND AND SEATTLE RAILWAY SYSTEM

S. P. & S. RY.—OREGON TRUNK RY.—OREGON ELECTRIC RY.—(Subsidiaries of Northern Pacific and Great Northern Railways)



Mt. Hood (11,245 ft.) and Timberline Lodge at the 6000 foot level. Reached by short motor trip or by sight seeing buses from Portland, Oregon. Ski-lift showing above center of lodge extends one mile to 7000 foot level.



Amber Lake—thirty miles west of Spokane on S.P. & S.Ry. main line.



Columbia River—near Wishram, Wash. on S.P. & S.Ry. main line.

Your Choice of... Three Daily Trains
Between PORTLAND and SPOKANE

See Page 4 For Detailed Schedules

FAST DELIVERY



For prompt pickup and fast delivery (within established vehicle limits everywhere) specify Railway Express

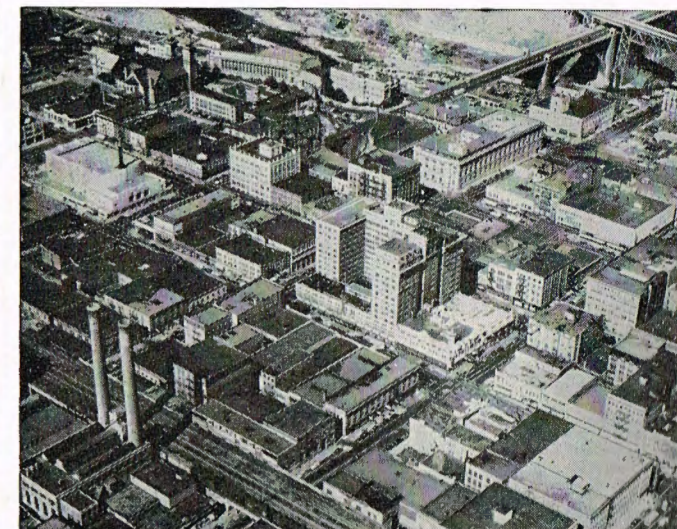


SPOKANE, PORTLAND AND SEATTLE RAILWAY SYSTEM

S. P. & S. RY.—OREGON TRUNK RY.—OREGON ELECTRIC RY.—(Subsidiaries of Northern Pacific and Great Northern Railways)



Airplane view of Vancouver, Washington and S.P. & S. bridge across Columbia River



Spokane—Queen City of the Inland Empire



Vital Link Between
SPOKANE, PORTLAND & CALIFORNIA
Portland, Pasco, Spokane and East

NEED A HOTEL RESERVATION?

Use
WESTERN UNION HOTEL ROOM FINDER SERVICE

To make and confirm reservations for the type of accommodations you want at any distant city.

CONVENIENT! FAST! INEXPENSIVE!



Telegram tolls and small service cost may be charged to your Western Union charge account or credit card—or billed direct to you at home or office.



NBC Network

Monday Nights

8 to 8:30 P.M.
Eastern Standard Time

7 to 7:30 P.M.
Central Standard Time

9:30 to 10 P.M.
Mountain Standard Time

8:30 to 9 P.M.
Pacific Standard Time



Portland—the Rose City



SPOKANE, PORTLAND AND SEATTLE RAILWAY SYSTEM

S. P. & S. RY.—OREGON TRUNK RY.—OREGON ELECTRIC RY.—(Subsidiaries of Northern Pacific and Great Northern Railways)

GENERAL INFORMATION

NOTE—This folder has been compiled with care, but may contain errors. Furthermore, it is sometimes necessary to change schedules without notice, trains shown are sometimes unavoidably delayed and connections missed. We hope none of our patrons will be inconvenienced by any of these causes, but the Railway Company will not be liable therefor.

ADJUSTMENT OF FARES. In cases of dispute with conductors or agents, passengers should pay fare required, take receipt and communicate with Auditor Revenue Accounts, S. P. & S. Ry., Box 571, Portland 7, Ore.

REDEMPTION OF TICKETS. Wholly unused tickets will be redeemed by selling agent. Partly used tickets will be redeemed under tariff regulations on application to Auditor Revenue Accounts.

TICKET LIMITS. Tickets will be honored for continuous passage to destination when presented not later than 4:00 a.m. standard time of the day following date of expiration as punched or otherwise shown on ticket. One-way tickets will be honored for passage within 30 days, round-trip tickets 6 months, in addition to date of sale.

FEDERAL TAX. Fares quoted in this folder do not include 10% Federal tax.

STOPOVERS will be allowed at all regular scheduled stops within limits, on application to Conductor.

CHILDREN'S FARES. Children under five years of age, when accompanied by parent or guardian, will be carried free of charge. Children five years of age and under twelve years of age will be charged one-half of the adult fares. Children of five and under twelve years of age who are not mature enough to take care of themselves when traveling alone must not be ticketed unless accompanied by parent or guardian. Children twelve years of age and over will be charged the adult fare.

MARK YOUR BAGGAGE. All baggage should show name and permanent address of owner. Appropriate gummied labels may be secured from Ticket or Baggage Agent.

HAND BAGGAGE in Pullmans is restricted to what can be conveniently placed in berth or at seat occupied by passenger.

BAGGAGE MAXIMUMS. Ordinarily 150 lbs. is free allowance for each adult ticket. No single piece of baggage exceeding 300 pounds in weight, or 72 inches in greatest dimension, or exceeding \$2500.00 in value will be checked. Free allowances are subject to tariff stipulation as to contents, weight, value and size.

BAGGAGE INSURANCE. A charge of only twenty cents is made for each hundred dollars value declared above \$100 for baggage checked for each adult passenger and above \$50 for each half-fare ticket. The maximum baggage valuation which may be insured on a single ticket is \$2500.

LIMITED LIABILITY. Excess value of baggage must be declared and paid for at time of checking.

BICYCLES (not motorcycles), baby carriages, dogs and guns are carried in baggage cars subject to tariff regulations.

LOST ARTICLES should be inquired for at the Baggage Office, Union Station, Portland, Oregon, or S. P. & S. Station, Spokane, Wash.

RESPONSIBILITY. No responsibility is assumed for unchecked articles left in stations or cars.

GENERAL OFFICES

Amer. Bank Bldg., 621 S.W. Morrison St., Box 571, Portland 7, Oregon

JOHN M. BUDD..... President St. Paul 1, Minn.
ROBT. S. MACFARLANE Vice-President St. Paul 1, Minn.
J. C. MOORE..... Vice-President Portland, Oregon
A. J. HUNT..... Asst. to Vice-Pres. & Gen. Mgr. Portland, Oregon
GEO. F. EHLEN..... Traffic Manager Portland, Oregon
H. W. SHIELDS..... Asst. Traffic Manager Portland, Oregon
W. J. CROSBIE..... General Passenger Agent Portland, Oregon
E. H. BLOCK..... General Freight Agent Portland, Oregon
R. W. WEST..... Gen. Industrial Agent Portland, Oregon
F. J. HARRIS..... Asst. General Industrial Agent Portland, Oregon
E. H. SHOWALTER..... General Manager Portland, Oregon
N. S. WESTERGARD..... Asst. to Gen. Mgr. Portland, Oregon
J. L. MONAHAN..... Superintendent Portland, Oregon
C. E. BARNES..... Gen'l Supt. Motive Power Vancouver, Wash.
C. F. THOMAS..... Secretary and Chief Engineer Portland, Oregon
T. R. PADDEN..... Treasurer Portland, Oregon
G. L. WILLIAMS..... Purchasing Agent Portland, Oregon
L. W. ALBERTSON..... Comptroller Portland, Oregon
H. L. KENDALL..... Auditor Disbursements Portland, Oregon
E. C. MICHELSEN..... Auditor Revenue Accounts Portland, Oregon
C. E. BROEDER..... Auditor Misc'l. Accounts Portland, Oregon
G. C. GRAHAM..... Auditor Machine Section Portland, Oregon
W. J. SHEEHAN..... Gen'l Claim Agent Portland, Oregon
W. P. GARRETT..... Right of Way and Tax Agent Portland, Oregon
W. T. COWAN..... Superintendent Dining Cars Portland, Oregon

Representatives

ALBANY, ORE...... WM. BODNO (Phone M. 291)..... Agt., O. E. Ry. Sta.
ASTORIA, ORE...... R. C. BAKER, 20th & Commercial (Phone 113) Agt.
BEND, ORE...... E. A. KOSKELA (Phone 1360) Agt. Passenger Sta.
 G. A. SILKWORTH (Phone 438)..... General Agent
EUGENE, ORE...... S. A. SEXSMITH (Ph. 5-8757, 5-8758) Agt. O.E.Ry. Sta.
 W. Z. MYERS (Phone 5-8759)..... General Agt.
 J. H. TAYLOR..... Traveling Frt. & Pass. Agent
HILLSBORO, ORE...... H. SWENSON (Ph. 1944)..... Agt., O.E.Ry. Frt. Depot
JUNCTION CITY, ORE...... L. W. MALLORY (Ph. M. 382) Agt., O.E.Ry. Frt. Depot
LOS ANGELES 14, CALIF.
 Great Northern Railway 510 West Sixth St., Phone Vandike 1201
 S. L. WILLIAMS..... District Passenger Agent
 Northern Pacific Railway 510 West Sixth St., Phone Trinity 2321
 D. F. WALKER..... General Agent
OAKLAND 12, CAL.
 Great Northern Railway 611-612 Cen. Bk. Bl., Ph. Templebar 2-7672; 2-7673
 A. F. NIKOLAI..... General Agent
 Northern Pacific Railway 815 Central Bank Bldg., Ph. Glencourt 1-8717
 SPENCER A. JEWELL..... General Agent
PORTLAND 7, ORE...... A. C. STICKLEY..... GAPD (SP&S-NP. Rys.)
 439 S.W. 6th Ave., Telephone Capitol 1311
 A. W. GUSEY..... GAPD (SP&S-GN. Rys.)
 607 S.W. Washington St., Telephone BE. 7273
 J. L. MILLER, Ticket Agt., Union Station, Foot of N.W. 6th Ave., Telephone Broadway 3421
1101 American Bank Building Phone ATwater 9111
 H. K. HALLGREN..... District Passenger Agent
 R. A. LAWRENCE..... General Agent, Freight Dept.
 CLARENCE JOHNSON... Trav. Frt. & Pass. Agent
 ALEX H. STUCKERT..... City Freight Agent
 J. W. JONES..... City Freight Agent
 G. E. SKINNER..... City Freight Agent
 P. H. BRINGMANN, Local Freight Agent, N. W. 11th and Hoyt, Phone ATwater 9111
REDMOND, ORE...... A. F. SHUGERT (Phone 13)..... Agt., Passenger Sta.
SACRAMENTO 14, CAL...... T. L. MAY, Gen. Agt., G. N. Ry., 223 Forum Bldg.
ST. HELENS, ORE...... J. L. MCGRAW (Phone 658)..... Agt., S.P.&S. Station
SALEM, ORE...... J. D. SURLLES (Ph. 3-3129) Agt., O.E.Ry. Frt. Depot
SAN FRANCISCO 5, CAL.
 Northern Pacific Railway 681 Market St. Phone Sutter 1-1078
 DANIEL TINNEY..... General Agent
 Great Northern Railway 679 Market St. Phone Sutter 1-6051; 1-6052
 A. L. SCOTT..... General Agent, Passenger Dept.
SEASIDE, ORE...... P. J. MARTELL (Ph. 45)..... Agent, S.P.&S. Ry. Sta.
SPOKANE 8, WASH...... R. E. HENDERSHOTT..... General Agent
 D. W. MORRISON, Traveling Frt. & Pass. Agt.
 925 Old National Bank Building, Ph. Main 4238
 RAY L. DUBOIS, General Agent, Passenger Dept., Davenport Hotel, Phone Main 5141
 C. G. SHEFFIELD, City Passenger & Ticket Agt., Sprague Ave. & Wall St. Phone Main 5321
 B. B. McCANNON, Ticket Agent, Gt. Nor. Ry. Sta.
VANCOUVER, WASH...... J. CONDRA Agt. (Ph. Oxford 3-1491), S.P.&S.R. Sta.
 C. M. WAGNER (Phone Oxford 5-2941)..... Pass. Sta.

Agents of the Great Northern and Northern Pacific Rys. throughout the United States are the direct representatives of the Spokane, Portland and Seattle Railway Co., Oregon Trunk Railway and Oregon Electric Railway Co.

