



S. P. & S. Railway Company Streamliner and freight train
near Avery, Washington



FEBRUARY 26, 1952
Subject to change without notice



The Northwest's Own Railway

THROUGH SERVICE

VIA

NORTH COAST
LIMITED

EMPIRE
BUILDER



TIME TABLES

Pacific Standard Time

TRAVEL THE
COLUMBIA RIVER
SCENIC ROUTE
THROUGH THE
CASCADE RANGE

FEBRUARY 26, 1952
Subject to change without notice



The Northwest's Own Railway

THROUGH SERVICE

VIA

NORTH COAST
LIMITED

EMPIRE
BUILDER



TIME TABLES

Pacific Standard Time

TRAVEL THE
COLUMBIA RIVER
SCENIC ROUTE
THROUGH THE
CASCADE RANGE



SPOKANE, PORTLAND AND SEATTLE RAILWAY SYSTEM

S. P. & S. RY.—OREGON TRUNK RY.—OREGON ELECTRIC RY.—(Subsidiaries of Northern Pacific and Great Northern Railways)

TRANSCONTINENTAL TRAIN SERVICE—BETWEEN PORTLAND, PASCO AND EAST

SPOKANE, PORTLAND AND SEATTLE, NORTHERN PACIFIC AND CHICAGO, BURLINGTON AND QUINCY RAILWAYS

West Bound, Read Down Eastbound, Read Up

Daily North Coast Ltd. No. 51	Daily Alask'n No. 49	Chicago, Burlington and Quincy Railway (Central Time)	Mil. f'm P't	Daily Alask'n Zephyr No. 22	Daily North Coast Ltd. No. 50
11.00	1.00	Lv Chicago (Union Station).....Ar	2327	2.40	7.45
11.48	1.36	Lv Aurora.....Ar	2289	2.02	6.50
2.04	3.17	Lv Savanna.....Ar	2182	12.28	4.23
2.25	3.40	Lv Dubuque.....Ar	2145	12.05	4.00
4.51	5.21	Lv LaCrosse.....Ar	2030	10.20	1.21
5.25	5.38	Lv Winona.....Ar	2006	10.00	12.45
8.00	7.45	Ar St. Paul (Union Station).....Lv	1900	8.25	10.45
Streamlined North Coast Limited					
No. 1	No. 3	Northern Pacific Railway	No. 4	No. 2	No. 2
9.00	9.30	Lv St. Paul (Union Station).....Ar	1900	7.30	10.00
9.35	10.15	Lv Minneapolis (Hen. Av. Stn.)Ar	1890	6.55	9.27
7.35	7.40	Lv Duluth.....Ar	1881	8.10	10.50
7.50	7.52	Lv Superior.....Ar	1877	7.54	10.34
12.11	1.35	Lv Staples.....Ar	1733	3.20	6.40
2.55	5.50	Lv Fargo.....Ar	1622	11.15	4.00
5.04	9.05	Lv Jamestown.....Ar	1530	7.45	2.00
6.40	11.58	Lv Bismarck.....Ar	1428	4.45	12.10
9.02	2.44	Lv Mandan (Mountain Time).....Ar	1423	2.55	10.40
11.40	5.43	Lv Dickinson.....Ar	1322	12.07	8.30
1.27	7.33	Lv Glendive.....Ar	1217	1.05	6.00
2.40	8.53	Lv Miles City.....Ar	1138	10.57	4.18
5.10	11.40	Lv Forsyth.....Ar	1093	9.35	3.10
		Lv Billings.....Ar	991	6.35	12.50
A 7.30	A 7.30	Lv Gardiner (Yel. Nat'l Park).....Ar	929	A 10.15	A 10.15
8.00	3.00	Lv Livingston.....Ar	875	3.30	10.25
8.58	4.02	Lv Bozeman.....Ar	851	2.30	9.30
12.25	7.45	Lv Butte.....Ar	756	11.00	6.20
x 11.15	7.30	Lv Helena.....Ar	753	11.15	x 6.25
1.40	9.30	Lv Garrison.....Ar	704	9.05	5.00
3.15	11.35	Lv Missoula.....Ar	636	7.00	3.35
4.15	1.20	Lv Paradise (Pacific Time).....Ar	565	3.35	12.30
6.39	4.13	Lv Sandpoint.....Ar	446	11.53	10.12
7.16	4.53	Lv Athol.....Ar	418	10.59	a 9.35
8.10	6.00	Ar Spokane (N.P. Station).....Lv	378	9.45	8.50

No. 5	No. 1	No. 1	No. 4	No. 2		
7.15	8.40	8.40	Lv Spokane (N.P. Station).....Ar	378	7.30	8.25
10.30	11.40	11.40	Ar Pasco.....Lv	231	4.05	5.25
Spokane, Portland and Seattle Railway						
No. 5	No. 3	No. 3	No. 6	No. 4		
10.40	1.35	1.35	Lv Pasco.....Ar	231	3.45	2.30
1.30	4.05	4.05	Ar Wishram.....Lv	106	12.17	12.05
4.05	6.25	6.25	Lv Vancouver.....Ar	10	9.26	9.45
4.35	*7.00	*7.00	Ar Portland (Union Station).....Lv	0	9.00	9.15

Connecting Lines

.....	6.30	Lv Kansas City (C.B. & Q. RR.)Ar	2042	1.20
.....	8.17	Lv St. Joseph.....Ar	1978	11.45
.....	10.20	Lv Omaha.....Ar	1887	12.15
.....	12.05	Lv Lincoln.....Ar	1832	7.30
.....	8.45	Lv Denver.....Ar	1832	6.30
.....	8.00	Ar Billings.....(N.P. Ry).....Lv	991	9.00

a—Stops to let off or pick up revenue passengers from or to Missoula and east or Pasco and west where scheduled to stop.

x Bus. A During park season via Bus.

* Passengers may remain in sleeping cars at Portland until 7:30 A.M.

EQUIPMENT

STREAMLINED NORTH COAST LIMITED BETWEEN CHICAGO AND PORTLAND

Diesel Powered

S. P. & S. 3-4, N. P. 1-2, C. B. & Q. 51-50

OBSERVATION LOUNGE-BUFFET CAR — Between Pasco and Portland. (Car 30 westbound, Car 40 eastbound)

OBSERVATION LOUNGE-SLEEPING CAR — Between Chicago and Pasco.

Four bedrooms, 1 compartment, spacious lounge, radio, library, writing desk. Buffet service.

STANDARD SLEEPING CAR — Between Chicago and Portland. Newest type all-room car. 3 bedrooms, 1 compartment, 6 roomettes, 8 duplex roomettes. (251 westbound, 261 eastbound.)

TOURIST SLEEPING CAR — Between Spokane and Portland. 14 section (BR Westbound, PN Eastbound). Direct car-to-car transfer to modern tourist car from and to Chicago.

LUXURY "DAY-NITE" COACH — Between Chicago and Portland. Chaise lounge "sleepy hollow" seats with leg rests for reclining full length.

COACH-BUFFET-LOUNGE — Between St. Paul and Pasco. De Luxe accommodations expressly for coach and tourist car passengers. Seats for 19, tables, writing desk, radio, magazines. Sandwiches and beverages.

DINING CAR SERVICE — Between Chicago and Pasco. New diner-lunch car, with dining section and lunch counter. In dining section: club breakfasts, \$1.15 to \$1.75; Table d'hote dinner, \$2.50; Table d'hote luncheon, \$1.90. Special plate luncheons and dinners, \$1.50. Also a la carte service. At Lunch Counter: Tasty hot plates, 75c to 1.05. Soups, sandwiches, salads, desserts, beverages.

Breakfast — Fruits and juices, cereals, eggs, toast, rolls, doughnuts, beverages. Combination breakfasts, 75c to 1.00.

N. P. 3-4—ALASKAN (Diesel Power)

STANDARD SLEEPING CAR:

Billings-Spokane: 10 section, 1 compartment, 1 drawing room (Car No. 37 Westbound, No. 47 Eastbound).

St. Paul-Mandan: 10 Section, 1 compartment, 1 drawing room (Car 35 Westbound, 45 Eastbound).

CAFE CAR—Spokane-Pasco:

Meal service in station restaurants between St. Paul and Spokane.

RECLINING SEAT COACH:

St. Paul-Pasco.

S. P. & S. No. 5 - 6, (Diesel Power), N. P. No. 5 - 4 COLUMBIA RIVER EXPRESS—ALASKAN BETWEEN SPOKANE, PASCO AND PORTLAND

Deluxe reclining chair car, Pasco-Portland.

Reserved seat coach, Cafe car and deluxe coaches, Spokane and Pasco.

Seats in reserved seat coach, Spokane-Pasco, must be reserved in advance.

SPOKANE, PORTLAND AND SEATTLE RAILWAY SYSTEM

S. P. & S. RY.—OREGON TRUNK RY.—OREGON ELECTRIC RY.—(Subsidiaries of Northern Pacific and Great Northern Railways)



TRANSCONTINENTAL TRAIN SERVICE—BETWEEN PORTLAND, SPOKANE AND EAST

VIA CHICAGO, BURLINGTON & QUINCY AND GREAT NORTHERN, SPOKANE, PORTLAND AND SEATTLE RAILWAYS

Westbound, Read Down				Eastbound, Read Up			
Daily	Daily Western Star	Daily Empire Builder	Chicago, Burlington and Quincy Railroad (Central Time)	Miles from Portland	Daily Western Star	Daily Empire Builder	Daily
No. 53	No. 53	No. 49			No. 54	No. 44	No. 54
11.15	11.15	1.00	Lv Chicago (Un. Stn.).....Ar	2260	8.00	2.00	8.00
12.03	12.03	1.36	Lv Aurora.....Ar	2222	7.10	1.18	7.10
2.31	2.31	3.17	Lv Savanna.....Ar	2115	4.35	11.30	4.35
3.15	3.15	3.55	Lv East Dubuque.....Ar	2076	3.40	10.50	3.40
5.20	5.20	5.21	Lv LaCrosse.....Ar	1963	1.39	9.17	1.39
5.55	5.55	5.38	Lv Winona.....Ar	1933	1.01	8.55	1.01
8.15	8.15	7.45	Ar St. Paul (Un. Stn.).....Lv	1833	11.00	7.15	11.00
C'h's only No. 27							
9.30	8.45	8.15	Lv St. Paul (Un. Stn.).....Ar	1833	10.30	7.00	9.55
10.03	9.15	8.45	Lv Minneapolis (GN Stn.).....Ar	1822	9.55	6.30	9.20
11.45	11.00	10.16	Lv Willmar.....Ar	1731	7.48	4.57	7.23
1.52	1.15	12.05	Lv Breckenridge.....Ar	1618	5.40	2.25	5.20
3.00	2.25	1.15	Lv Fargo.....Ar	1571	4.30	1.15	4.05
.....	4.10	Lv Grand Forks.....Ar	1493	2.35
.....	3.08	Lv New Rockford.....Ar	1447	11.19	1.37
7.18	8.55	4.55	Lv Minot.....Ar	1338	10.20	9.35	11.35
7.35	11.25	7.20	Ar Williston (Central Time) Lv	1218	7.45	7.10	9.05
10.10	10.35	6.20	Lv Williston (Mountain ") Ar	1218	6.40	6.10	7.55
9.25	10.35	9.10	Lv Glasgow.....Ar	1062	3.40	3.20	4.05
12.25	1.40	12.10	Lv Havre.....Ar	909	12.30	12.30	12.25
3.40	4.55	Ar Great Falls.....Lv	903	9.35
.....	7.50	Lv Great Falls.....Ar	903	9.20
Streamlined Western Star							
6.35	11.05	2.10	Lv Shelby.....Ar	804	6.40	10.30	9.30
7.12	11.45	e 2.45	Lv Cut Bank.....Ar	780	6.01	g 9.56	8.56
f 8.25	k 12.56	Streamlined	Lv Glacier Park.....Ar	733	4.58	Streamlined	f 7.37
f 10.27	k 2.38	Empire Builder	Lv Belton.....Ar	676	3.16	Streamlined	f 5.40
10.59	3.01	Empire Builder	Lv Columbia Falls.....Ar	661	2.54	Streamlined	f 5.10
Streamlined Western Star							
10.30	1.50	6.15	Lv Kalispell.....Ar	676	3.55	Empire Builder	5.25
11.30	3.25	6.15	Lv Whitefish.....Ar	653	2.30	6.40	4.45
2.30	6.10	Lv Libby.....Ar	537	12.07	1.50
3.00	6.40	9.15	Lv Troy (Mountain Time) Lv	519	11.40	3.40	1.25
2.05	5.45	8.15	Lv Troy (Pacific Time).....Ar	519	10.35	2.40	12.24
3.05	f 6.45	Lv Bonner's Ferry.....Ar	488	f 9.49	11.30
4.00	f 7.30	Lv Sandpoint.....Ar	454	f 9.08	10.40
6.20	9.30	11.30	Ar Spokane (GN Stn.).....Lv	379	7.20	11.15	8.30
Spokane, Portland and Seattle Railway							
No. 3	No. 3	No. 1			No. 4	No. 2	No. 4
9.45	9.45	12.06	Lv Spokane, GN Stn.....Ar	379	6.35	10.35	6.35
1.35	1.35	3.05	Lv Pasco.....Lv	231	3.00	7.35	3.00
4.05	4.05	5.15	Ar Wishram.....Lv	106	12.05	5.15	12.05
6.25	6.25	7.05	Lv Vancouver.....Ar	10	9.45	3.23	9.45
*7.00	*7.00	7.30	Ar Portland, Un. Stn.....Lv	0	9.15	3.00	9.15

THE STREAMLINED WESTERN STAR (Lightweight Streamlined Equipment)

CHICAGO-PORTLAND NO EXTRA FARE

CB&Q 53-54, GN 3-4, SP&S 3-4

ALL CLASSES OF TICKETS HONORED

Observation-Lounge-Buffet Car between Spokane and Portland—contains 8 Sections (Car 30 Westbound, Car 40 Eastbound).
Observation-Lounge Car between Chicago and Spokane—Buffet service and radio reception. Also contains 1 Drawing Room and 2 Double Bedrooms (39 Westbound, 49 Eastbound).
Standard Sleeping Cars offering modern Pullman accommodations between Chicago and Portland, one car containing 4 Sections, 8 Duplex Roomettes and 4 Double Bedrooms. Double Bedrooms are connecting and may be sold ensuite at drawing room rate (32 Westbound, 42 Eastbound).
Streamliner Day-Nite Coaches between Chicago and Spokane. Reclining seats with leg rests forming a couch for sleeping. Wide windows and individual reclining lights, modern lounge and dressing rooms. Radio reception—Seats not reserved. Deluxe coaches between Spokane and Portland.
Buffet Service between Spokane and Portland.
Coffee Shop Car between Chicago and Spokane. Counter and table service at economical meal prices. Club breakfasts 60c, 85c and \$1.10, fruit and fruit juices, cereals, eggs, toast, rolls, doughnuts and beverages. Plate luncheons and dinners \$1.10. Soups, sandwiches, salads, desserts and beverages available throughout the day.
Dining Car Service between Chicago and Spokane. Traditional famous Great Northern meals. Club breakfasts \$1.00, \$1.15 and \$1.35. Plate luncheons \$1.35, table d'hote luncheons \$1.65. Plate dinners \$1.35, table d'hote dinners \$2.25. Also a la carte service for all meals.

† Except Sunday. * Passengers may remain in sleeping cars at Portland until 7:30 A.M. c—No. 1 stops at Glasgow to discharge revenue passengers from Minot and East and to receive revenue passengers for Spokane and West where No. 1 is scheduled to stop. d—No. 2 stops at Glasgow to discharge revenue passengers from Spokane and West and to receive revenue passengers for Minot and East where No. 2 is scheduled to stop. e—No. 1 stops at Cut Bank to discharge revenue passengers from Williston and east and to receive revenue passengers for scheduled stops Spokane and West. g—No. 2 stops at Cut Bank to discharge revenue passengers from Spokane and West and to receive revenue passengers for scheduled stops Williston and East. k—No. 3 stops at Glacier Park and Belton to receive revenue passengers for Spokane and West where No. 3 is scheduled to stop and to discharge revenue passengers from Great Falls and East. l—No. 4 stops at Belton and Glacier Park to discharge revenue passengers from Spokane and West and to receive revenue passengers for Great Falls and East where No. 4 is scheduled to stop.



SPOKANE, PORTLAND AND SEATTLE RAILWAY SYSTEM

S. P. & S. RY.—OREGON TRUNK RY.—OREGON ELECTRIC RY.—(Subsidiaries of Northern Pacific and Great Northern Railways)

PORTLAND - WISHRAM - PASCO - SPOKANE TRAINS

Table with 12 columns for train numbers and times, and 2 rows for Westbound (Read Down) and Eastbound (Read Up) services. Includes special stops and a 'SPECIAL STOPS' section.

FOR THROUGH SERVICE AND CONSIST OF ALL TRAINS. SEE PRECEDING PAGES 2 and 3.

A TRANS-CONTINENTAL SYSTEM OF RAILWAYS THROUGH AMERICA'S WONDERLAND

Traversing the northern states between the Pacific Northwest and Chicago presents a veritable wonderland offering passengers a splendid variety of ever-changing scenery.

These trains provide passengers with every feature of modern railway travel for their comfort, and pleasure.

Light face figures denote A. M. time. Bold face figures denote P. M. time. Ar. Arrive. Lv. Leave. / Stop on signal.

SPOKANE, PORTLAND AND SEATTLE RAILWAY SYSTEM

S. P. & S. RY.—OREGON TRUNK RY.—OREGON ELECTRIC RY.—(Subsidiaries of Northern Pacific and Great Northern Railways)

PORTLAND - REDMOND - BEND TRAINS

Table with 3 columns for Read Down, Oregon Trunk Ry., and Read Up. Lists stations like Bend, Deschutes, Redmond, Prineville, etc.

PORTLAND - ST. HELENS RAINIER - ASTORIA - CLATSOP BEACH SERVICE

Table with 3 columns for Westbound-Read Down, Columbia River Route, and Eastbound-Read Up. Lists stations like Astoria, Clatskanie, Rainier, etc.

S. P. & S. Ry. Local tickets will not be issued or honored on Oregon Motor Stages between these stations.

Interline tickets routed S. P. & S. Ry. between these stations and stations east of Portland on or via S. P. & S. will be honored on Oregon Motor Stages.

PACIFIC TRAILWAYS

Table with 3 columns for Read Down, PORTLAND - BEND, and Read Up. Lists stations like Astoria, Clatskanie, Rainier, etc.

FREIGHT SERVICE

Route your freight shipments via the Spokane, Portland and Seattle Railway for fast and dependable service—between Portland, Astoria, Pasco, Spokane, Yakima, Walla Walla, Pendleton, Lewiston, Bend and all points east and south.

FREIGHT SERVICE ONLY

is operated on the following Branches S. P. & S. Railway

GOLDENDALE BR.

Table with 2 columns: Miles and STATIONS. Lists stations like Pitt, Klickitat, Wahiakus, etc.

KEASEY BRANCH

Table with 2 columns: Miles and STATIONS. Lists stations like Portland, Linnton, Burlington, etc.

HAMMOND BRANCH

Table with 2 columns: Miles and STATIONS. Lists stations like Warrenton, Flavel, Hammond, etc.

Oregon Electric Railway

PORTLAND-SALEM-ALBANY-EUGENE LINE

Table with 2 columns: Miles and STATIONS. Lists stations like Forest Grove, Beaverton, Tigard, etc.

FOREST GROVE BRANCH

Table with 2 columns: Miles and STATIONS. Lists stations like Forest Grove, Orano, Hillsboro, etc.

SANTIAM BRANCH

Table with 2 columns: Miles and STATIONS. Lists stations like Albany Yard, Froman, Fry, etc.

EQUIPMENT BETWEEN PORTLAND and BEND

Trains Nos. 4-102 and 103-3 (N.A.C.). Coaches daily between Portland and Wishram and Bend, A.C. observation cars daily between Portland and Wishram, See pages 2, 3 and 4.

References:

- b Will stop on signal to receive revenue passengers for Bingen-White Salmon, Vancouver and Portland.
c Will stop on signal to receive revenue passengers for Vancouver and Portland.
g Will stop on signal to discharge revenue passengers from Portland and Vancouver.
h Will stop to discharge revenue passengers from Portland, Vancouver and Bingen-White Salmon.
m Stops to receive or discharge revenue passengers for or from Pasco and East.

NOW MORE CONVENIENT THAN EVER



WHILE TRAVELING

SIMPLY HAND YOUR MESSAGE TO PORTER, TRAINMAN OR CAR ATTENDANT



Your telegrams may be sent "collect"—charged to your Western Union charge account or Credit Card—or billed direct to you at home or office.

TELEGRAPH YOUR ARRIVAL AND DEPARTURE... TO MAKE RESERVATIONS... GET AND SEND MONEY



ALL-YEAR SEASHORE RESORT

Surrounded by evergreen forests and a background of mountains, Clatsop Beach has every facility for visitors—golf courses, fishing, amusement places, sea foods, pure water, good hotels, restaurants, cottages, and camps.

Tune In The "RAILROAD HOUR" Every Monday Night NBC Network

SHIP BY RAIL

RESPONSIBILITY

Not Responsible—The Spokane, Portland and Seattle Railway Company is not responsible for errors in time tables, inconvenience or damage resulting from delayed trains or failure to make connections; schedules herein are subject to change without notice.

Light face figures denotes A.M. time. Bold face figures denotes P.M. time. Ar. Arrive. Lv. Leave. / Stop on Signal. t Telegraph office.



SPOKANE, PORTLAND AND SEATTLE RAILWAY SYSTEM

CONNECTIONS AT PORTLAND
S. P. & S. RY. - OREGON TRUNK RY. - OREGON ELECTRIC RY. - (Subsidiaries of Northern Pacific and Great Northern Railways)

PORTLAND - PUGET SOUND - BRITISH COLUMBIA

NORTHERN PAC. RY. - GREAT NORTHERN RY. - UNION PAC. R. R.

Table with columns for Northbound-Read Down and Southbound-Read Up, listing train numbers, times, and routes between Portland, Vancouver, and Seattle.

SOUTHERN PACIFIC COMPANY

Southbound-Read Down Northbound-Read Up

Table with columns for Southbound-Read Down and Northbound-Read Up, listing train numbers, times, and routes between Portland, Eugene, and Los Angeles.

a-via P G Lines Bus

EQUIPMENT OF TRAINS

Trains 9-10 Shasta Daylight - Streamlined Air Conditioned Train-Radio Parlor Obs. Reclining Chair Cars, Diner, Coffee Shop and Tavern Car. Reserved seat Chair Car. Train 58 will take transfers from No. 9 at Martinez. Train 57 will make transfer to No. 10 at Oakland, 16th Street. Train 11-12 Cascade - (Streamlined, Air Conditioned), Between Portland and San Francisco. Standard sleeping cars with drawing rooms, compartments, bedrooms, roomettes, lounge and dining car. Reserved seat chair car. Train 19-20 Klamath - (Air Conditioned). Between Portland and San Francisco. Standard sleeping cars, diner, coaches and reclining chair cars. Train 329-330 Rogue River - Between Portland and Ashland. Standard Air Conditioned sleeping car, sections, compartments and drawing room and chair car. Between Eugene and Coos Bay, coach.

CONNECTIONS AT SPOKANE AND PASCO

Table with columns for Bus Dly, Great Northern Ry., and Spokane Int'l-CAN. PACIFIC, listing bus and train schedules and fares.

Table for Great Northern Ry. Bend, Klamath Falls, Bieber, listing bus and train schedules and fares.

Table for Northern Pacific, listing bus and train schedules and fares between various stations.

MARK YOUR BAGGAGE

All baggage, whether checked or carried with you, should be plainly marked with your name and permanent address. This will insure prompt recovery should it become lost or go astray. Remove all obsolete labels and addresses. JEWELRY, CURRENCY, VALUABLE PAPERS and LIQUIDS should not be placed in baggage intended for checking. The railway will not assume responsibility for loss of, or damage to such articles.

Table for SAN FRANCISCO-LOS ANGELES-COAST LINE, listing train numbers, times, and routes.

Table for SAN FRANCISCO-LOS ANGELES-VALLEY LINE, listing train numbers, times, and routes.

Table for UNION PACIFIC RAILROAD, listing train numbers, times, and routes between various stations.

SPOKANE, PORTLAND AND SEATTLE RAILWAY SYSTEM

S. P. & S. RY. - OREGON TRUNK RY. - OREGON ELECTRIC RY. - (Subsidiaries of Northern Pacific and Great Northern Railways)



Sleeping, Parlor Car and Reserved Seat Fares

Federal Tax Extra

For information only. Subject to change without notice.

Table with columns for BETWEEN AND, PORTLAND, SPOKANE, and BETWEEN AND, listing fares for various routes and services.

RATES FOR SLEEPING CAR ACCOMODATIONS

Table with columns for Where Standard Lower Berth Is, Upper Berth Is, Duplex-Roomette Is, ROOMETTE, BEDROOM, Bedroom Suite, Compartment, Drawing Room, and TOURIST CAR, listing rates for various accommodations.

INDUSTRIAL LOCATIONS

National concerns continue to come to the Pacific Northwest and are choosing the Portland area as a location for their distribution warehouses. This is not only because of the tremendous growth in population but because of the strategic location for distribution throughout the Pacific Northwest, Alaska, the Hawaiian Islands, and the Orient. In addition, industries requiring lower power costs, better labor, or climatic working conditions, continue to locate throughout the area.

The SP&S RAILWAY SYSTEM owns and serves a great many industrial locations along the Columbia and Willamette Rivers as well as in the cities of both Oregon and Washington. Contact the Industrial Department for information.

KENNETH C. MILLER
General Industrial and Agricultural Agent
American Bank Building
P. O. Box 571
Portland 7, Oregon

Through sleeping cars not operated in all trains; fare applies for continuous trip via direct connections. A duplex roomette is a single private room with wash basin and toilet; a bedroom contains lower and upper berth, wardrobe and complete toilet facilities; a compartment is a private room with lower and upper berths, wash basin and toilet; a drawing room has a divan berth in addition.

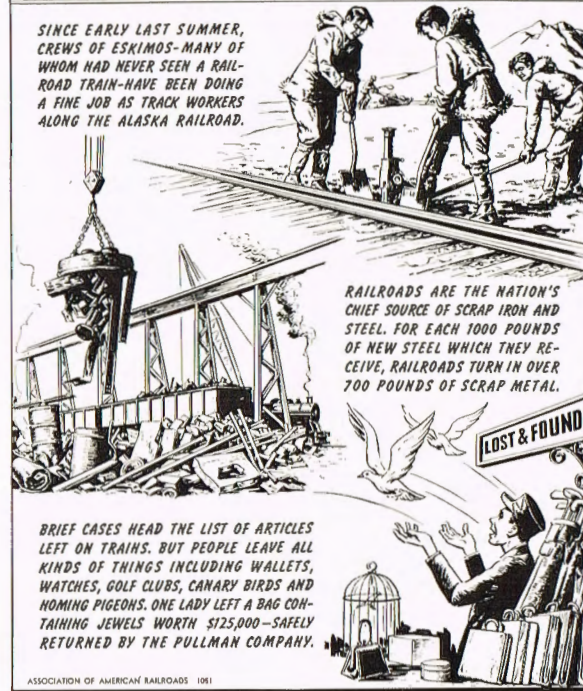
Exclusive occupancy of a drawing room requires 1 1/2 adult rail tickets, or their equivalent; for 2 bedrooms en suite 2 such tickets; for compartment, duplex-roomette, single or double bedroom, one such ticket between S. P. & S.-N. P.-G. N. and connections; 1-1/10 tickets between certain other lines; for section, one such ticket for each berth.



Columbia River East of Stevenson, Washington
S. P. & S. Railway

Rail oddities

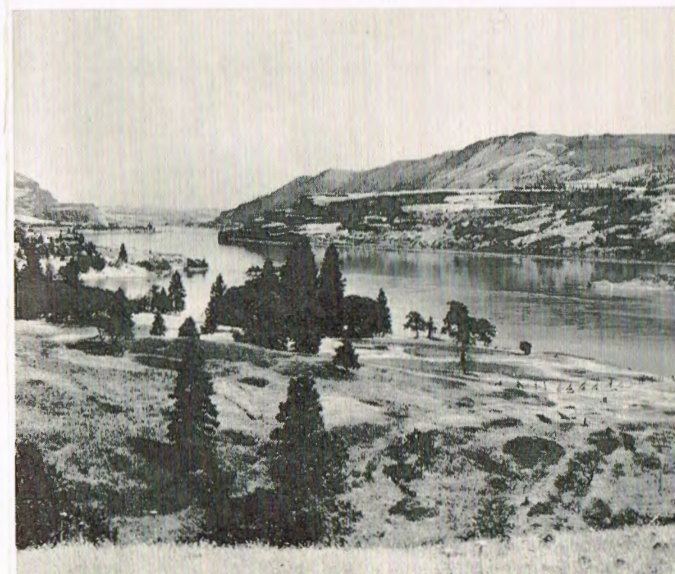
SINCE EARLY LAST SUMMER, CREWS OF ESKIMOS—MANY OF WHOM HAD NEVER SEEN A RAILROAD TRAIN—HAVE BEEN DOING A FINE JOB AS TRACK WORKERS ALONG THE ALASKA RAILROAD.



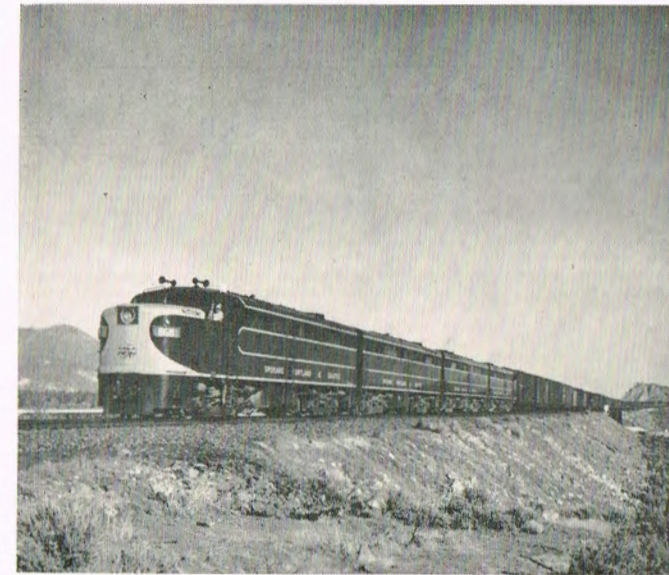
RAILROADS ARE THE NATION'S CHIEF SOURCE OF SCRAP IRON AND STEEL. FOR EACH 1000 POUNDS OF NEW STEEL WHICH THEY RECEIVE, RAILROADS TURN IN OVER 700 POUNDS OF SCRAP METAL.

BRIEF CASES HEAD THE LIST OF ARTICLES LEFT ON TRAINS. BUT PEOPLE LEAVE ALL KINDS OF THINGS INCLUDING WALLETTS, WATCHES, GOLF CLUBS, CANARY BIRDS AND HOMING PIGEONS. ONE LADY LEFT A BAG CONTAINING JEWELS WORTH \$125,000—SAFELY RETURNED BY THE PULLMAN COMPANY.

ASSOCIATION OF AMERICAN RAILROADS 1961



Columbia River scene west of Lyle, Washington on S. P. & S. Railway.



Diesel powered 109 car freight train north bound crossing Crooked River bridge between Terrebonne and Opal City, Oregon on Oregon Trunk Ry.



Mt. Adams and Trout Lake near Bingen-White Salmon, Washington
S. P. & S. Railway

RAIL TRAVEL CREDIT CARD PLAN

permits purchase of Rail and Pullman tickets from any S. P. & S. Ry. Co. agent on Credit by securing a Credit Card from the Rail Travel Credit Agency, Room 436 Union Station, Chicago, Ill.

RAIL-TRAVEL-LOAN-SERVICE

for individual trips may be arranged on application to ticket agent and proper approval of credit.

"DRIVURSELF" RAIL-AUTO SERVICE

provides a new automobile at your destination or stop over point. Ask the agent for further details on any of the above plans.



NBC Network

Monday Nights

8 to 8:30 P.M.
Eastern Standard Time

7 to 7:30 P.M.
Central Standard Time

9:30 to 10 P.M.
Mountain Standard Time

8:30 to 9 P.M.
Pacific Standard Time



S. P. & S. Railway Train No. 6 passing Weather Bureau Rock one and one half miles east of Stevenson, Washington
S. P. & S. Railway

SHIP and TRAVEL by TRAIN



Your Choice of
Three Daily Trains

Between

PORTLAND and SPOKANE

SEE PAGE 4
FOR DETAILED SCHEDULES



SPOKANE, PORTLAND AND SEATTLE RAILWAY SYSTEM

S. F. & S. RY. - OREGON TRUNK RY. - OREGON ELECTRIC RY. - (Subsidiaries of Northern Pacific and Great Northern Railways)

GENERAL INFORMATION

NOTE—This folder has been compiled with care, but may contain errors. Furthermore, it is sometimes necessary to change schedules without notice, trains shown are sometimes unavoidably delayed and connections missed. We hope none of our patrons will be inconvenienced by any of these causes, but the Railway Company will not be liable therefor.

ADJUSTMENT OF FARES. In cases of dispute with conductors or agents, passengers should pay fare required, take receipt and communicate with Auditor Revenue Accounts, S. P. & S. Ry., Box 571, Portland 7, Ore.

REDEMPTION OF TICKETS. Wholly unused tickets will be redeemed by selling agent. Unused or partly used tickets will be redeemed under tariff regulations on application to Auditor Revenue Accounts.

USE TICKETS WITHIN LIMIT. Passengers must reach destination not later than midnight of date punched in margin of tickets, or otherwise indicated. One-way tickets will be honored for passage within 30 days, round-trip tickets 6 months, in addition to date of sale.

FEDERAL TAX. Fares quoted in this folder do not include 15% Federal tax.

STOPOVERS will be allowed at all stations within limit, on application to Conductor.

CHILDREN'S FARES. Children under five years of age, when accompanied by parent or guardian, will be carried free of charge. Children five years of age and under twelve years of age will be charged one-half of the adult fares. Children of five and under twelve years of age who are not mature enough to take care of themselves when traveling alone must not be ticketed unless accompanied by parent or guardian. Children twelve years of age and over will be charged the adult fare.

MARK YOUR BAGGAGE. All baggage should show name and permanent address of owner. Appropriate gummed labels may be secured from Ticket or Baggage Agent.

HAND BAGGAGE in Pullmans is restricted to what can be conveniently placed in berth or at seat occupied by passenger.

BAGGAGE MAXIMUMS. Ordinarily 150 lbs. is free allowance for each adult ticket. No single piece of baggage exceeding 300 pounds in weight, or 72 inches in greatest dimension, or exceeding \$2500.00 in value will be checked. Free allowances are subject to tariff stipulation as to contents, weight, value and size.

BAGGAGE INSURANCE. A charge of only fifteen cents is made for each hundred dollars value declared above \$100 for baggage checked for each adult passenger and above \$50 for each half-fare ticket. The maximum baggage valuation which may be insured on a single ticket is \$2500.

LIMITED LIABILITY. Excess value of baggage must be declared and paid for at time of checking.

BICYCLES (not motorcycles), baby carriages, dogs and guns are carried in baggage cars subject to tariff regulations.

LOST ARTICLES should be inquired for at the Baggage Office, Union Station, Portland, Oregon, or S. P. & S. Station, Spokane, Wash.

RESPONSIBILITY. No responsibility is assumed for unchecked articles left in stations or cars.

GENERAL OFFICES

EXECUTIVE, TRAFFIC AND PURCHASING DEPARTMENTS
Amer. Bank Bldg., 621 S. W. Morrison St., Portland, Oregon
ACCOUNTING AND OPERATING DEPARTMENTS
N. W. 11th Ave. and N. W. Hoyt St., Portland, Oregon

JOHN M. BUDD President.....	St. Paul 1, Minn.
ROBT. S. MACFARLANE Vice-President.....	St. Paul 1, Minn.
E. B. STANTON Vice-President and General Manager.....	Portland 7, Oregon
A. J. HUNT Asst. to Vice-Pres. and Gen. Mgr.....	Portland 7, Oregon
N. S. WESTERGARD Asst. to Gen. Mgr.....	Portland 7, Oregon
J. C. MOORE Traffic Manager.....	Portland 7, Oregon
H. W. SHIELDS General Passenger Agent.....	Portland 7, Oregon
GEO. F. EHLEN Asst. Freight Traffic Manager.....	Portland 7, Oregon
E. H. BLOCH Asst. Gen. Frt. Agent.....	Portland 7, Oregon
KENNETH C. MILLER Gen. Industrial and Agricultural Agt.....	Portland 7, Oregon
R. A. LAWRENCE Asst. General Industrial Agent.....	Portland 7, Oregon
E. H. SHOWALTER Superintendent.....	Vancouver, Wash.
J. A. CANNON Gen'l Supt. Motive Power.....	Portland 7, Oregon
C. F. THOMAS Secretary and Chief Engineer.....	Portland 7, Oregon
T. L. PADDEN Treasurer.....	Portland 7, Oregon
G. R. WILLIAMS Purchasing Agent.....	Portland 7, Oregon
L. W. ALBERTSON Comptroller.....	Portland 7, Oregon
H. L. KENDALL Auditor Disbursements.....	Portland 7, Oregon
E. C. MICHELSEN Auditor Revenue Accounts.....	Portland 7, Oregon
C. E. BROEDER Auditor Miscel. Accounts.....	Portland 7, Oregon
W. J. SHEEHAN Gen'l. Claim Agent.....	Portland 7, Oregon
W. P. GARRETT Right of Way and Tax Agent.....	Portland 7, Oregon
W. T. COWAN Superintendent Dining Cars.....	Portland 7, Oregon

Representatives

ALBANY, ORE.	WM. BODNO (Phone M. 291) Agt., O. E. Ry. Sta.
ASTORIA, ORE.	R. C. BAKER 20th and Commercial (Phone 113) Agt.
BEND, ORE.	ALBERT ALLEN (Phone 1360) Agt. Passenger Sta.
	G. A. SILK WORTH (Phone 438) Trav. Frt. & Pass. Agt.
	S. A. SEXSMITH (Ph. 5-8757, 5-8758) Agt., O. E. Ry. Sta.
EUGENE, ORE.	W. Z. MYERS (Phone 5-8750, 5-8759) General Agent
	J. H. TAYLOR..... Traveling Frt. & Pass. Agent
HILLSBORO, ORE.	H. SWENSON (Ph. 1944) Agt., O. E. Ry. Frt. Depot
JUNCTION CITY, ORE.	L. W. MALLORY (Ph. M. 382) Agt., O. E. Ry. Frt. Depot
LOS ANGELES 14, CALIF.	Great Northern Railway
	510 West Sixth St., Phone Vandike 1201
	S. L. WILLIAMS..... District Passenger Agent
	E. M. BRADY..... Trav. Pass. Agent
Northern Pacific Railway,	510 West Sixth St., Phone Trinity 2321
	J. F. WALKER..... General Agent
	J. E. BEATTY..... District Pass. Agent
OAKLAND 12, CAL.	A. F. NIKOLAI..... Gen. Agt., Gt. Nor. Ry.
	C. G. ALEXANDER..... Dist. Pass. Agt.
	611-612 Central Bk. Bldg., Ph. Templebar 2-7672; 2-7673
	J. C. SPRACKLIN, Gen. Agt., Nor. Pac. Ry., 815 Central Bank Building, Phone Glencourt 1-8717.
PORTLAND 7, ORE.	W. H. DYER..... City Pass. Agent
	A. C. STICKLEY..... GAPD (SP&S - NP. Rys.)
	439 S.W. 8th Avenue, Telephone Capital 1311
	A. W. GUSEY..... GAPD (SP&S - GN. Rys.)
	607 S.W. Washington Street Telephone BE. 7273
	J. L. MILLER, Ticket Agent, Union Station, Foot of N. W. 6th Avenue, Telephone Broadway 3421.
	C. J. LIVINGSTON..... District Passenger Agent
	H. K. HALGREN..... Traffic Representative
	R. W. WEST..... General Agent, Freight Dept.
	T. J. MARTIN..... Trav. Freight and Pass. Agent
	HAROLD F. ERZ..... City Freight Agent
	ALEX H. STUCKERT..... City Freight Agent
	CLARENCE S. JOHNSON..... City Freight Agent
	P. H. BRINGMANN, Local Freight Agent, N. W. 11th and Hoyt, Phone ATwater 9111
REDMOND, ORE.	A. F. SHUGERT (Phone 13) Agt., Passenger Station
SACRAMENTO 14, CAL.	T. L. MAY, Gen. Agt., Gt. Nor. Ry., 223 Forum Bldg.
ST. HELENS, ORE.	J. L. MCGRAW (Phone 658) Agt., S.P.&S. Station
SALEM, ORE.	J. D. SURLES (Phone 4763) Agt., O.E. Ry. Frt. Depot
SAN FRANCISCO 5, CAL.	Northern Pacific Railway, 681 Market St. Phone Sutter 1-1078.
	DANIEL TINNEY..... General Agent
	R. L. PREFONTAINE..... City Ticket Agt.
	679 Market Street, Phone Sutter 1-6051; 1-6052.
	A. L. SCOTT..... General Agent, Passenger Dept.
	D. B. SCHULTZ..... City Passenger Agent
SEASIDE, ORE.	P. J. MARTELL (Phone 45) Agt., S.P. & S. Ry. Sta.
SPOKANE 8, WASH.	R. E. HENDERSHOTT..... General Agent
	D. W. MORRISON, City Frt. and Pass. Agt.
	925 Old National Bank Building, Phone Main 4238.
	R. C. MURPHY, General Agent, Passenger Dept.
	Davenport Hotel, Phone Main 5141.
	E. F. BAIRD, City Passenger and Ticket Agt., Sprague Ave. and Wall St. Phone Main 5321.
	F. D. GROSS..... Ticket Agent, Gt. Nor. Ry. Sta.
VANCOUVER, WASH.	J. CONDRA..... Agt (Phone 3-1491), S.P.&S. Ry. Sta.
	R. I. THOMPSON (Phone 5-2941)..... Passenger Station

Agents of the Great Northern and Northern Pacific Railways throughout the United States are the direct representatives of the Spokane, Portland and Seattle Railway Company, Oregon Trunk Railway and Oregon Electric Railway Company.

