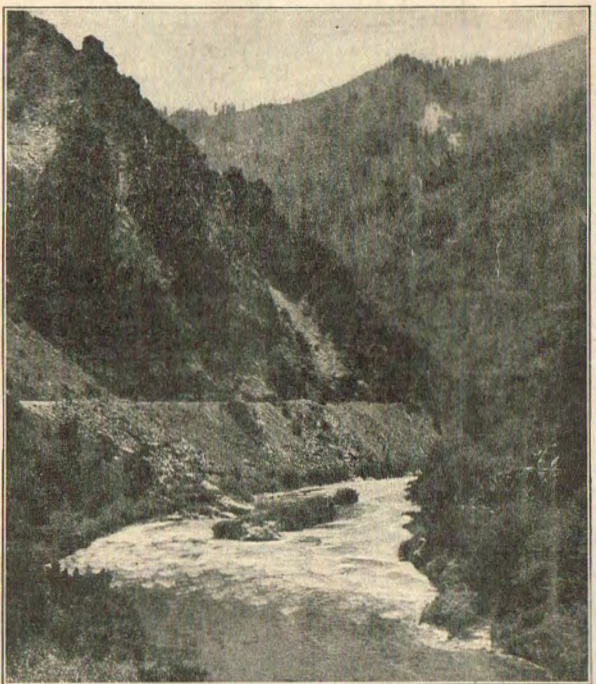


WESTERN PACIFIC DENVER AND RIO GRANDE WESTERN

WESTERN PACIFIC DENVER AND RIO GRANDE WESTERN



FEATHER RIVER CANYON, CALIFORNIA



ROYAL GORGE, COLORADO

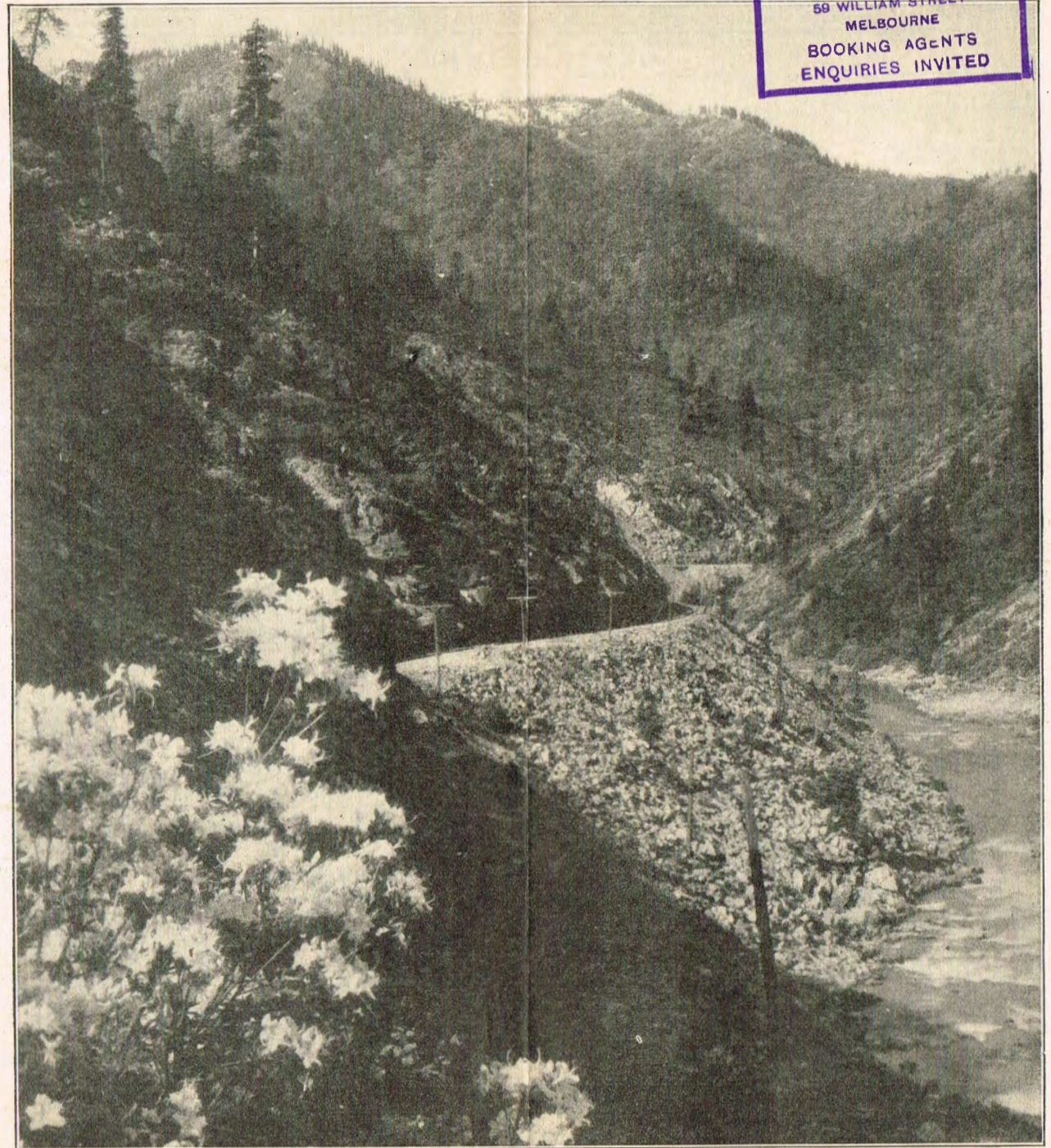
"The Scenic Line of the World"

THE FEATHER RIVER ROUTE

"The Scenic Line of the World"

THE GREAT SALT LAKE ROUTE

UNION STEAM SHIP COY.
59 WILLIAM STREET
MELBOURNE
BOOKING AGENTS
ENQUIRIES INVITED



FEATHER RIVER CANYON, CALIFORNIA
Over 100 Miles of Scenery Just Like This
Western Pacific Railroad - Feather River Route

DENVER & RIO GRANDE WESTERN - WESTERN PACIFIC

GENERAL INDEX

CALIFORNIA CONNECTIONS— California Transportation Company..... 43-44 Central California Traction Company..... 43-44 Indian Valley Railroad..... 25 Quincy Railroad..... 25 Sacramento Northern Railroad..... 43, 44 San Francisco-Sacramento Railroad..... 43, 44 Santa Fe (Coast Lines)..... 45, 46 Southern Pacific (Coast, San Joaquin and Shasta Routes)..... 45, 46 Tidewater Southern Railway..... 43, 44	PAGE	Rock Island Lines..... 37 San Luis Central Railroad..... 25 San Luis Southern Railroad..... 25 Santa Fe..... 38 Utah Railway..... 24 Union Pacific..... 30	PAGE	EASTERN CONNECTIONS..... PAGE GENERAL INFORMATION..... 61, 52 MAP—Denver & Rio Grande Western—Western Pacific..... 27-30 PULLMAN SLEEPING CAR FARES..... 33 REPRESENTATIVES—Denver & Rio Grande Western— Western Pacific..... 53, 54 SLEEPING CAR SERVICE..... 5, 6 SLEEPING CAR SERVICE—Condensed Schedules of Daily California Car Lines..... 7, 8 STAGE LINES..... 47-50 STEAMSHIP CONNECTIONS..... 41
COLORADO CONNECTIONS— Burlington Route..... 36 Colorado & Southern and Fort Worth & Denver City Railways..... 38 Colorado & Wyoming Railway..... 25 Midland Terminal Railway..... 24 Missouri Pacific Railroad..... 35	PAGE	NEVADA CONNECTIONS— Eureka Nevada Railway..... 25 Nevada Northern Railway..... 25 Tonopah & Goldfield Railroad..... 38		
UTAH CONNECTIONS— Deep Creek Railroad..... 25 Los Angeles & Salt Lake Railroad..... 26 Oregon Short Line, and O. W. R. & N..... 31 Southern Pacific..... 32, 38	PAGE	NEW MEXICO CONNECTIONS— New Mexico Central Railroad..... 24		

INDEX TO STATIONS—Denver & Rio Grande Western Railroad

ACEQUIA, Colo. 1 Alamosa, Colo. 6, 14, 15 Allison, Colo. 14 Almont, Colo. 10 Altus, Utah. 20 American Fork, Utah. 1 Animas Cañon, Colo. 14 Antonito, Colo. 14, 16 Aspen, Colo. 17 Augusta, Colo. 8 Aurora, Utah. 26 Austin, Colo. 13 Avon, Colo. 1 Aztec, N. M. 18 Baldwin, Colo. 10 Barclay, Utah. 20 Barnes, Colo. 8 Barranca, N. M. 16 Belden, Colo. 1 Bingham, Utah. 21 Blanca, Colo. 14 Bondad, Colo. 18 Brown's Cañon, Colo. 18 Buckman, N. M. 16 Buena Vista, Colo. 1 Burnham, Colo. 1, 3 Buttes, Colo. 1 Cañon City, Colo. 1 Cañon of the Colorado River, Colo. 1 Carbon Junction, Colo. 18 Carbondale, Colo. 1, 7 Carlisle, Utah. 22 Carthage, Utah. 22 Castilla, Utah. 1 Castle Gate, Utah. 1 Castle Rock, Colo. 1 Cebolla, Colo. 9 Cedar Cliffs, Utah. 27 Cedar Hill, N. M. 18 Cedarwood, Colo. 8 Chama, N. M. 14 Charleston, Utah. 1 Chester, Utah. 27 Chicosa Junction, Colo. 8	CIMARRON, Colo. 9 Clisco, Utah. 14 Clear Creek, Utah. 24 Clifton, Colo. 1 Colorado City, Colo. 1 Colorado Spgs., Colo. 1, 24 Colton, Utah. 1, 24 Concrete, Colo. 1 Cottonwood, Colo. 1 Creede, Colo. 1 Crested Butte, Colo. 15 Crestone, Colo. 10 Cuchara Jct., Colo. 8, 14 Cumbres, Colo. 14 Dale, Utah. 20 Dalton, Utah. 21 DeBeque, Colo. 1 Del Norte, Colo. 15 Delta, Colo. 9, 13 Denver, Colo. 1, 2, 3 Divide, Utah. 1, 2 Dolores, Colo. 19 Doyle, Colo. 9 Dulce, N. M. 14 Durango, Colo. 14, 18, 19	FOUNTAIN GREEN, Utah. 27 Fruita, Colo. 27 Gale, Colo. 1 Gann, Colo. 1 Genoa, Utah. 1 Gibson, Colo. 1 Gilluly, Utah. 6 Glenwood Spgs., Colo. 1 Gorogza, Utah. 1, 2, 7 Grand Junction, Colo. 1, 2, 9 Grand Valley, Colo. 1 Granite, Colo. 20 Greenland, Colo. 1 Green River, Utah. 1 Gunnison, Colo. 1 Gunnison, Utah. 9, 10 Gypsum, Colo. 26 Gypsum, Utah. 27	LAZY, Colo. 1 La Madera, N. M. 16 La Jara, Colo. 1 Lake City, Colo. 11 Lakota, Utah. 1 Larkspur, Colo. 1 Lasarc, Colo. 8 La Veta, Colo. 14 Layton, Utah. 1 Lead Mine, Utah. 13 Leadville, Colo. 1, 2 Le Grand, Utah. 20 Lehi, Utah. 1 Leland, Utah. 23 Littleton, Colo. 1, 3 Loma, Colo. 1 Louviers, Colo. 1 Lumberton, N. M. 14 Mack, Colo. 1 Madera, Colo. 11 Malta, Colo. 1 Mammoth, Utah. 23 Mammoth Jct., Utah. 23 Mancos, Colo. 19 Manitou, Colo. 1 Eden, Utah. 26, 27 Marnel, Utah. 8 Marshall Pass, Colo. 9 Marysville, Utah. 26 Mears Junction, Colo. 9 Mesa, Utah. 1, 21 Mill Fork, Utah. 18 Mineral Hot Spgs., Colo. 8 Minnequa, Colo. 8 Minturn, Colo. 1 Moffat, Colo. 6 Monarch, Colo. 19 Monero, N. M. 5 Monte Vista, Colo. 14 Montrose, Colo. 9, 12 Monument, Colo. 1 Morrill, Utah. 27 Mosca, Colo. 6	MOUNDS, Utah. 1 Mt. Pecosant, Utah. 25 Murray, Utah. 1 Nash, Utah. 1 Nathrop, Colo. 1 Nephi, Utah. 1 Nephi Junction, Utah. 27 New Castle, Colo. 1 Newark, Utah. 1 North Salt Lake, Utah. 1 Nunn's, Utah. 22 Ogden, Utah. 1, 2 Ohio City, Colo. 10 Olathe, Colo. 1 Olivers, Utah. 1 Olmstead, Utah. 22 Ophir, Colo. 19 Oster, Colo. 14 Otoway, N. M. 16 Ouray, Colo. 16 Overland Park Jct. 3 Oxford, Colo. 14, 17	RED CHIFF, Colo. 1 Richfield, Utah. 26 Ridge, Colo. 19 Ridgway, Colo. 12, 19 Rifle, Colo. 1 Rio Grande, N. M. 16 Riverside, Colo. 1 Riverton, Utah. 1 Rockwood, Colo. 14 Romeo, Colo. 1 Roper, Utah. 1, 20 Rouse Jct., Colo. 8 Royal Gorge, Colo. 1 Roy, Utah. 1 Sample, Colo. 1 San Hedeonso, N. M. 16 Santa Fe, N. M. 16 Santaquin, Utah. 23 Sapinero, Colo. 8, 11 Sargent, Colo. 9 Saw Pit, Colo. 19 Seane, Utah. 1 Seefeld, Utah. 24 Sedalia, Colo. 1 Servilleta, N. M. 16 Shoshone, Colo. 1 Silver, Utah. 26 Silt, Colo. 23 Silver City, Utah. 23 Silverton, Colo. 1 Smoot, Utah. 22 Soldier Summit, Utah. 1 Somerset, Colo. 13 Porter, Colo. 19 Portland, Colo. 1 Posta, Colo. 15 Spanish Fork, Utah. 23 Spring City, Utah. 26 Springville, Utah. 1, 23 Sterling, Utah. 26 Woodside, Utah. 1	STRUBY, Colo. 1 Sublette, N. M. 1 Sugar House, Utah. 20 Sunnyside, Utah. 25 Swallows, Colo. 1 Taos Jct., N. M. 16 Telluride, Colo. 19 Tennessee Pass, Colo. 1 Texas Creek, Colo. 14 Thistle, Utah. 1, 26 Thompson, Utah. 1 Toltee Gorge, Colo. 18 Tres Piedras, N. M. 16 Trinidad, Colo. 8 Trout Lake, Colo. 19 Una, Colo. 1 Utah Ry. Jct., Utah. 1 Upper Falls, Utah. 22 Utaline, Colo. 1 Vaca, Utah. 26 Valle, Colo. 19 Vance Junction, Colo. 19 Villa Grove, Colo. 8 Vivian Park, Utah. 22 Wagon Wheel Gap, Colo. 15 Walsburg, Utah. 22 Walla, Colo. 14 Walsenburg, Colo. 8, 14 Wellington, Utah. 1 Westwater, Utah. 1 Westcliffe, Colo. 4 Westwood, Utah. 1 Widefield, Colo. 1 Wigwam, Colo. 1 Wildwood, Utah. 22 Wilson, Colo. 19 Wolcott, Colo. 1 Wohurst, Colo. 1 Woods Cross, Utah. 1 Woodside, Utah. 1
--	--	---	--	---	---	--

INDEX TO STATIONS—Western Pacific Railroad Also Sacramento Northern, Tidewater Southern, Indian Valley and Deep Creek R. R.

ALLISON, Cal. Page 43 Altamont, Cal. 2 Anderson, Nev. 2 Antelope, Nev. 2 Arboga, Cal. 2 Arnolfo, Cal. Page 44 Aurora, Cal. Page 44 Barro Utah. Page 43-44 Beckwith, Cal. 2 Belden, Cal. 2 Beowawe, Nev. 2 Berry Creek, Cal. 2 Berryessa, Cal. Page 25 Bidwell, Cal. 2 Blairdsen, Cal. 2 Blinzig, Cal. 2 Bliss, Nev. 2 Bloomer, Cal. 2 Boaz, Nev. 2 Bronte, Nev. 2 Brooke, Cal. Page 43 Burnmaster, Utah. 2 Cabeña, Cal. 2 Calpine, Cal. 2 Caplino Jet., Cal. 2 Camp Rodgers, Cal. 2 Carbóna, Cal. 2 Carlin, Nev. 2 Chico, Cal. Page 43-44	CHILCOOT, Cal. 2 Clio, Cal. 2 Clive, Utah. 2 Cluro, Nev. 2 Colusa, Cal. Page 43-44 Colusa Jct., Cal. 2 Conasta, Cal. Page 43-44 Copperfield, Cal. 2 Cousman, Cal. 2 Craig, Cal. 2 Crescent Mills, Cal. 2 Cromberg, Cal. 2 Decoto, Cal. 2 Death, Nev. 2 Delle, Utah. 2 Del Paso, Cal. 2 Dunphy, Cal. 2 Doyle, Cal. 1, 2 Durham, Nev. 2 East Ely, Nev. Page 43-44 East Gilday, Cal. 2 East Nicolaus, Cal. Page 43-44 East San Jose, Cal. Page 43-44 Elburz, Nev. 2 Elko, Nev. 2	ELLERBECK, Utah. 2 Ellison, Nev. 2 Elmhurst Station, 2 Elverta, Cal. 2 Ely, Nev. Page 43 Engels, Cal. Page 25 Escalon, Cal. Page 44 Eureka, Nev. Page 25 Fairfield, Cal. Page 44 Feather River Inn Station, Cal. 2 Flanigan, Nev. 2 Franklin, Cal. 2 Fruitvale Station, Oakland, Cal. 2 Garfield, Utah. 2 Utah Monster, Utah. Page 25 Gerlach, Nev. 2 Glennvale, Cal. 2 Globe, Cal. Page 43 Gold Hill, Utah. Page 25 Golconda, Nev. 2 Gray's Flat, Cal. 2 Hackstaff, Cal. 2 Hagginwood, Cal. Page 43 Halleck, Nev. 2 Hawley, Cal. 2	HAYWARD, Cal. 2 Howells, Cal. 2 Hunter, Nev. 2 Indian Falls, Cal. Page 25 Intake, Cal. 2 Irrington, Cal. 2 Jasper, Nev. 2 Jeffery Shops, Cal. 2 Jungo, Nev. 2 Kampos, Nev. 2 Keddie, Cal. 2 Kerlinger, Cal. 2 Kingdon, Cal. 2 Knolls, Utah. 2 Krum, Nev. 2 Lago, Utah. 2 Las Plumas, Cal. 2 Lathrop, Cal. 2 Livermore, Cal. 2 Live Oak, Cal. Page 43-44 Low, Utah. 2 Loyalton, Cal. 2 Lyoth, Cal. 2 Marysville, Cal. 1, 2 Mayaro, Cal. 2 McGill, Nev. Page 25 McHenry, Cal. Page 44	MERIDIAN, Cal. Page 43-44 Midway, Cal. 2 Milpitas, Cal. 2 Modesto, Cal. Page 44 Nilegarden, Cal. 2 Niles, Cal. 2 North Sacramento, Cal. Page 43 Oakland, Cal. 1, 2 Omira, Cal. 2 Orville, Cal. 1, 2 Palermo, Cal. 2 Paisdale, Nev. 2 Panthor, Nev. 2 Pardo, Nev. 2 Parkton, Cal. 2 Pavine, Cal. 2 Pilot, Nev. 2 Pleasant Grove, Cal. 2 Plumas, Cal. 2 Poc, Cal. 2 Portola, Cal. 1 Proctor, Nev. 1 Pronto, Nev. 2 Pulga, Cal. 2 Quincy, Cal. Page 25 Quincy Jct., Cal. 2	RANGE, Cal. Page 43 Red House, Nev. 2 Red Rock, Cal. 2 Rennox, Nev. 2 Reno, Nev. 2 Reno Jet., Cal. 2 Reynard, Nev. 2 Rich, Cal. 2 Rio Linda, Cal. Page 43 Robla, Cal. Page 43 Rock Creek, Cal. 2 Ronda, Nev. 2 Sacramento, Cal. 1, 2 Salduro, Utah. 2 Salt Lake City, Utah. 2 San Jose, Cal. Page 44 Sand Pass, Nev. 2 San Francisco, Cal. 1, 2 San Jose Station, San Leandro Station, Oakland, Cal. 2 Scotts, Cal. 2 Sexton, Cal. Page 44 Shafter, Nev. 2 Silver Zone, Nev. 2 Simms, Cal. Page 44 Sloat, Cal. 2 Spring Garden, Cal. 2 Starks, Cal. Page 25 Starr, Nev. 2 Stockton, Cal. 1, 2 Yuba City, Cal. Page 43-44	SUISUN, Cal. Page 44 Sulphur, Nev. 2 Summer Home, Cal. 2 Sunol, Cal. Page 44 Sutter, Cal. Page 43-44 Tambo, Cal. 2 Thermaito, Cal. Page 44 Thornton, Cal. 2 Timple, Utah. 2 Tobar, Nev. 2 Tobin, Cal. 2 Trego, Nev. 2 Tres Vias, Cal. Page 43-44 Turner, Cal. Page 44 Twain, Cal. 2 Vacaville, Cal. Page 44 Yacoma, Nev. 2 Veramont, Cal. Page 25 Virgilia, Cal. 2 Warm Springs, Cal. 2 Wells, Nev. 2 Wendover, Utah. 2 Western Pacific Mole, Cal. 2 Winnemucca, Nev. 1, 2 Woodland, Cal. Page 43-44 Yuba City, Cal. Page 43-44
--	--	---	--	---	---	---

DENVER & RIO GRANDE WESTERN - WESTERN PACIFIC

THROUGH PULLMAN SLEEPING CAR SERVICE

WESTWARD	EASTWARD
DENVER & RIO GRANDE WESTERN—WESTERN PACIFIC TRAIN No. 1. SCENIC LIMITED	WESTERN PACIFIC—DENVER & RIO GRANDE WESTERN TRAIN No. 2. SCENIC LIMITED
STANDARD OBSERVATION SLEEPER (daily) Denver to Ogden, via Denver & Rio Grande Western, and Salt Lake City to San Francisco via Western Pacific.	STANDARD OBSERVATION SLEEPER (daily) San Francisco to Salt Lake City via Western Pacific, and Ogden to Denver via Denver & Rio Grande Western.
STANDARD DRAWING-ROOM COMPARTMENT SLEEPER (daily) Denver to Salt Lake City.	STANDARD DRAWING-ROOM COMPARTMENT SLEEPER (daily) Salt Lake City to Denver.
STANDARD DRAWING-ROOM COMPARTMENT SLEEPER (daily) Chicago to San Francisco, via C. B. & Q. No. 3, Denver & Rio Grande Western, Salt Lake City and Western Pacific No. 1.	STANDARD DRAWING-ROOM COMPARTMENT SLEEPER (daily) San Francisco to Chicago, via Western Pacific No. 2, Salt Lake City, Denver & Rio Grande Western, Denver, C. B. & Q. No. 2.
STANDARD DRAWING-ROOM SLEEPER (daily) St. Louis to San Francisco, via Missouri Pacific No. 11, Pueblo, Denver & Rio Grande Western, Salt Lake City, and Western Pacific No. 1.	STANDARD DRAWING-ROOM SLEEPER (daily) San Francisco to St. Louis, via Western Pacific No. 2, Salt Lake City, Denver & Rio Grande Western, Pueblo, Missouri Pacific No. 12.
DINING CAR (service a la carte) Denver to Salt Lake City, and Salt Lake City to San Francisco.	DINING CAR (service a la carte) San Francisco to Salt Lake City, and Salt Lake City to Denver.
COACHES Denver to Ogden, via Denver & Rio Grande Western and Salt Lake City to San Francisco via Western Pacific.	COACHES San Francisco to Salt Lake City via Western Pacific No. 2 and Ogden to Denver via Denver & Rio Grande Western.
DENVER & RIO GRANDE WESTERN—WESTERN PACIFIC TRAIN No. 3.	WESTERN PACIFIC—DENVER & RIO GRANDE WESTERN TRAIN No. 4.
STANDARD DRAWING-ROOM SLEEPER (daily) Denver to San Francisco, via Denver & Rio Grande Western, Salt Lake City and Western Pacific No. 3.	STANDARD DRAWING-ROOM SLEEPER (daily) San Francisco to Denver, via Western Pacific No. 4, Salt Lake City, Denver & Rio Grande Western.
STANDARD DRAWING-ROOM SLEEPER (daily) Denver to San Francisco, via Denver & Rio Grande Western, Ogden and Southern Pacific No. 19.	STANDARD DRAWING-ROOM SLEEPER (daily) San Francisco to Denver, via Southern Pacific No. 10, Ogden, Denver & Rio Grande Western.
TOURIST SLEEPER (daily) Salt Lake City to San Francisco, via Western Pacific No. 3.	TOURIST SLEEPER (daily) San Francisco to Salt Lake City, via Western Pacific No. 4.
DINING CAR (service a la carte) Denver to Salt Lake City, and Salt Lake City to San Francisco.	DINING CAR (service a la carte) San Francisco to Salt Lake City and Salt Lake City to Denver.
COACHES Denver to Ogden, via Denver & Rio Grande Western, and Salt Lake City to San Francisco via Western Pacific.	COACHES San Francisco to Salt Lake City, via Western Pacific and Ogden to Denver, via Denver & Rio Grande Western.
DENVER & RIO GRANDE WESTERN TRAIN No. 9.	DENVER & RIO GRANDE WESTERN TRAIN Nos. 316-116-16.
STANDARD OBSERVATION SLEEPER (daily) Denver to St. Louis, via Denver & Rio Grande Western, Pueblo and Missouri Pacific No. 12.	STANDARD DRAWING-ROOM SLEEPER (daily) Grand Junction to Denver, via Leadville.
COACHES Denver to Pueblo.	STANDARD 16-SECTION SLEEPER (daily) Salida to Denver.
	STANDARD 16-SECTION SLEEPER (daily) Alamosa to Denver.
	STANDARD 16-SECTION SLEEPER (daily) Alamosa to Pueblo.
	PARLOR CAR from Montrose to Salida, via Marshall Pass.
	PARLOR CAR from Durango to Alamosa.
	COACHES Grand Junction to Salida, via Marshall Pass, and Grand Junction to Denver via Leadville.
	COACHES from Farmington, Silverton, Durango, Santa Fe, Creede and Alamosa to Denver.
	STANDARD 16-SECTION SLEEPER (daily) Denver to Salida.
	STANDARD 16-SECTION SLEEPER (daily) Denver to Alamosa.
	STANDARD 16-SECTION SLEEPER (daily) Pueblo to Alamosa.
	PARLOR CAR Salida to Montrose, via Marshall Pass.
	PARLOR CAR Alamosa to Durango.
	DENVER & RIO GRANDE WESTERN TRAIN No. 10.
	STANDARD OBSERVATION SLEEPER (daily) St. Louis to Denver, via Missouri Pacific No. 11, Pueblo and Denver & Rio Grande Western.
	COACHES Denver to Denver.
	COACHES Denver to Grand Junction via Leadville, and from Salida to Grand Junction, via Marshall Pass.
	COACHES Denver to Alamosa, Creede, Durango, Silverton, Farmington and Santa Fe.

All Pullman Standard and Tourist Sleepers are electrically lighted.

DENVER & RIO GRANDE WESTERN - WESTERN PACIFIC

CONDENSED SCHEDULES OF THROUGH DAILY CALIFORNIA CAR LINES (COMPLETE CONDENSED SCHEDULES ON PAGES 35 TO 40, INCLUSIVE)

WESTBOUND GREAT SALT LAKE ROUTE

"SCENIC LIMITED" STANDARD SLEEPER
Chicago, Burlington & Quincy Train No. 3
Denver & Rio Grande Western—Western Pacific Train No. 1

CHICAGO TO SAN FRANCISCO

Lv Chicago	C. B. & Q.	11:00 pm	Sun	Mon	Tue	Wed	Thu	Fri	Sat	Sun
Lv Omaha	C. B. & Q.	4:25 pm	Tue	Wed	Thu	Fri	Sat	Sun	Mon	Tue
Lv Denver	C. B. & Q.	7:30 am	Tue	Wed	Thu	Fri	Sat	Sun	Mon	Tue
Lv Denver	D. & R. G. W.	8:15 am	Tue	Wed	Thu	Fri	Sat	Sun	Mon	Tue
Lv Colorado Springs	D. & R. G. W.	11:00 am	Tue	Wed	Thu	Fri	Sat	Sun	Mon	Tue
Lv Pueblo	D. & R. G. W.	12:30 pm	Tue	Wed	Thu	Fri	Sat	Sun	Mon	Tue
Ar ROYAL GORGE	D. & R. G. W.	2:09 pm	Tue	Wed	Thu	Fri	Sat	Sun	Mon	Tue
Ar Grand Junction	D. & R. G. W.	1:50 pm	Wed	Thu	Fri	Sat	Sun	Mon	Tue	Wed
Ar Salt Lake City	D. & R. G. W.	12:45 pm	Wed	Thu	Fri	Sat	Sun	Mon	Tue	Wed
Lv Salt Lake City	W. P.	11:23 pm	Wed	Thu	Fri	Sat	Sun	Mon	Tue	Wed
Ar Portola	W. P.	6:05 am	Thu	Fri	Sat	Sun	Mon	Tue	Wed	Thu
FEATHER RIVER CANYON	W. P.	10:35 am	Thu	Fri	Sat	Sun	Mon	Tue	Wed	Thu
Ar Oroville	W. P.	11:27 am	Thu	Fri	Sat	Sun	Mon	Tue	Wed	Thu
Ar Marysville	W. P.	12:35 pm	Thu	Fri	Sat	Sun	Mon	Tue	Wed	Thu
Ar Sacramento	W. P.	2:10 pm	Thu	Fri	Sat	Sun	Mon	Tue	Wed	Thu
Ar Stockton	W. P.	5:05 pm	Thu	Fri	Sat	Sun	Mon	Tue	Wed	Thu
Ar Oakland	W. P.	5:05 pm	Thu	Fri	Sat	Sun	Mon	Tue	Wed	Thu
Ar San Francisco	W. P.	5:45 pm	Thu	Fri	Sat	Sun	Mon	Tue	Wed	Thu

"SCENIC LIMITED" STANDARD SLEEPER
Missouri Pacific Train No. 11
Denver & Rio Grande Western—Western Pacific Train No. 1

ST. LOUIS TO SAN FRANCISCO

Lv St. Louis	M. P.	9:00 am	Sun	Mon	Tue	Wed	Thu	Fri	Sat	Sun
Lv Kansas City	M. P.	5:55 pm	Mon	Tue	Wed	Thu	Fri	Sat	Sun	Mon
Lv Pueblo	M. P.	11:25 am	Mon	Tue	Wed	Thu	Fri	Sat	Sun	Mon
Lv Pueblo	D. & R. G. W.	12:30 pm	Mon	Tue	Wed	Thu	Fri	Sat	Sun	Mon
Ar ROYAL GORGE	D. & R. G. W.	2:09 pm	Mon	Tue	Wed	Thu	Fri	Sat	Sun	Mon
Ar Grand Junction	D. & R. G. W.	1:50 pm	Mon	Tue	Wed	Thu	Fri	Sat	Sun	Mon
Ar Salt Lake City	D. & R. G. W.	12:45 pm	Mon	Tue	Wed	Thu	Fri	Sat	Sun	Mon
Lv Salt Lake City	W. P.	11:23 pm	Mon	Tue	Wed	Thu	Fri	Sat	Sun	Mon
Ar Portola	W. P.	6:05 am	Tue	Wed	Thu	Fri	Sat	Sun	Mon	Tue
FEATHER RIVER CANYON	W. P.	10:35 am	Tue	Wed	Thu	Fri	Sat	Sun	Mon	Tue
Ar Oroville	W. P.	11:27 am	Tue	Wed	Thu	Fri	Sat	Sun	Mon	Tue
Ar Marysville	W. P.	12:35 pm	Tue	Wed	Thu	Fri	Sat	Sun	Mon	Tue
Ar Sacramento	W. P.	2:10 pm	Tue	Wed	Thu	Fri	Sat	Sun	Mon	Tue
Ar Stockton	W. P.	5:05 pm	Tue	Wed	Thu	Fri	Sat	Sun	Mon	Tue
Ar Oakland	W. P.	5:05 pm	Tue	Wed	Thu	Fri	Sat	Sun	Mon	Tue
Ar San Francisco	W. P.	5:45 pm	Tue	Wed	Thu	Fri	Sat	Sun	Mon	Tue

Denver & Rio Grande Western—
Western Pacific Train No. 3

DENVER TO SAN FRANCISCO

Lv Denver	D. & R. G. W.	4:00 pm	Sun	Mon	Tue	Wed	Thu	Fri	Sat	Sun
Lv Colorado Springs	D. & R. G. W.	6:50 pm	Sun	Mon	Tue	Wed	Thu	Fri	Sat	Sun
Lv Pueblo	D. & R. G. W.	8:25 pm	Sun	Mon	Tue	Wed	Thu	Fri	Sat	Sun
Ar Glenwood Springs	D. & R. G. W.	6:50 am	Mon	Tue	Wed	Thu	Fri	Sat	Sun	Mon
Ar Grand Junction	D. & R. G. W.	10:00 am	Mon	Tue	Wed	Thu	Fri	Sat	Sun	Mon
Ar Salt Lake City	D. & R. G. W.	9:40 am	Mon	Tue	Wed	Thu	Fri	Sat	Sun	Mon
Lv Salt Lake City	W. P.	9:30 am	Mon	Tue	Wed	Thu	Fri	Sat	Sun	Mon
Ar Portola	W. P.	5:55 pm	Tue	Wed	Thu	Fri	Sat	Sun	Mon	Tue
Ar Oroville	W. P.	11:45 am	Wed	Thu	Fri	Sat	Sun	Mon	Tue	Wed
Ar Marysville	W. P.	12:45 am	Wed	Thu	Fri	Sat	Sun	Mon	Tue	Wed
Ar Sacramento	W. P.	2:45 am	Wed	Thu	Fri	Sat	Sun	Mon	Tue	Wed
Ar Stockton	W. P.	3:50 am	Wed	Thu	Fri	Sat	Sun	Mon	Tue	Wed
Ar Oakland	W. P.	7:00 am	Wed	Thu	Fri	Sat	Sun	Mon	Tue	Wed
Ar San Francisco	W. P.	7:45 am	Wed	Thu	Fri	Sat	Sun	Mon	Tue	Wed

Denver & Rio Grande Western Train No. 3
Southern Pacific Train No. 19

DENVER TO SAN FRANCISCO

Lv Denver	D. & R. G. W.	4:00 pm	Sun	Mon	Tue	Wed	Thu	Fri	Sat	Sun
Lv Colorado Springs	D. & R. G. W.	6:50 pm	Sun	Mon	Tue	Wed	Thu	Fri	Sat	Sun
Lv Pueblo	D. & R. G. W.	8:25 pm	Sun	Mon	Tue	Wed	Thu	Fri	Sat	Sun
Ar Glenwood Springs	D. & R. G. W.	6:50 am	Mon	Tue	Wed	Thu	Fri	Sat	Sun	Mon
Ar Grand Junction	D. & R. G. W.	10:00 am	Mon	Tue	Wed	Thu	Fri	Sat	Sun	Mon
Ar Salt Lake City	D. & R. G. W.	9:40 am	Mon	Tue	Wed	Thu	Fri	Sat	Sun	Mon
Ar Ogden	D. & R. G. W.	11:05 am	Mon	Tue	Wed	Thu	Fri	Sat	Sun	Mon
Lv Ogden	S. P.	6:00 am	Tue	Wed	Thu	Fri	Sat	Sun	Mon	Tue
Ar Hazen	S. P.	8:08 am	Tue	Wed	Thu	Fri	Sat	Sun	Mon	Tue
Ar Reno	S. P.	9:45 am	Tue	Wed	Thu	Fri	Sat	Sun	Mon	Tue
Ar Truckee	S. P.	11:15 pm	Tue	Wed	Thu	Fri	Sat	Sun	Mon	Tue
Ar Sacramento	S. P.	4:50 am	Wed	Thu	Fri	Sat	Sun	Mon	Tue	Wed
Ar Oakland	S. P.	7:51 am	Wed	Thu	Fri	Sat	Sun	Mon	Tue	Wed
Ar San Francisco	S. P.	8:30 am	Wed	Thu	Fri	Sat	Sun	Mon	Tue	Wed

†Pacific Time on Western Pacific west of Salt Lake City; Mountain Time on Denver & Rio Grande Western.
*Pacific Time on Southern Pacific west of Ogden.

EASTBOUND FEATHER RIVER CANYON ROUTE

"SCENIC LIMITED" STANDARD SLEEPER
Western Pacific—Denver & Rio Grande Western Train No. 2
Chicago, Burlington & Quincy Train No. 2

SAN FRANCISCO TO CHICAGO

Lv San Francisco	W. P.	9:20 am	Sun	Mon	Tue	Wed	Thu	Fri	Sat	Sun
Lv Oakland	W. P.	10:00 am	Sun	Mon	Tue	Wed	Thu	Fri	Sat	Sun
Lv Stockton	W. P.	12:35 pm	Sun	Mon	Tue	Wed	Thu	Fri	Sat	Sun
Lv Sacramento	W. P.	2:00 pm	Sun	Mon	Tue	Wed	Thu	Fri	Sat	Sun
Lv Marysville	W. P.	3:10 pm	Sun	Mon	Tue	Wed	Thu	Fri	Sat	Sun
Lv Oroville	W. P.	4:05 pm	Sun	Mon	Tue	Wed	Thu	Fri	Sat	Sun
FEATHER RIVER CANYON	W. P.	9:20 am	Sun	Mon	Tue	Wed	Thu	Fri	Sat	Sun
Ar Salt Lake City	W. P.	13:30 pm	Mon	Tue	Wed	Thu	Fri	Sat	Sun	Mon
Lv Salt Lake City	D. & R. G. W.	4:45 pm	Mon	Tue	Wed	Thu	Fri	Sat	Sun	Mon
Lv Grand Junction	D. & R. G. W.	3:20 am	Tue	Wed	Thu	Fri	Sat	Sun	Mon	Tue
Lv Glenwood Springs	D. & R. G. W.	6:22 am	Tue	Wed	Thu	Fri	Sat	Sun	Mon	Tue
CANYON OF THE COLORADO	D. & R. G. W.	10:00 am	Tue	Wed	Thu	Fri	Sat	Sun	Mon	Tue
EAGLE RIVER CANYON	D. & R. G. W.	2:38 pm	Tue	Wed	Thu	Fri	Sat	Sun	Mon	Tue
Lv ROYAL GORGE	D. & R. G. W.	4:20 pm	Tue	Wed	Thu	Fri	Sat	Sun	Mon	Tue
Ar Pueblo	D. & R. G. W.	5:55 pm	Tue	Wed	Thu	Fri	Sat	Sun	Mon	Tue
Ar Colorado Springs	D. & R. G. W.	8:30 pm	Tue	Wed	Thu	Fri	Sat	Sun	Mon	Tue
Ar Denver	D. & R. G. W.	9:45 pm	Tue	Wed	Thu	Fri	Sat	Sun	Mon	Tue
Lv Denver	C. B. & Q.	3:30 pm	Wed	Thu	Fri	Sat	Sun	Mon	Tue	Wed
Ar Omaha	C. B. & Q.	7:00 am	Thu	Fri	Sat	Sun	Mon	Tue	Wed	Thu
Ar Chicago	C. B. & Q.	7:00 am	Thu	Fri	Sat	Sun	Mon	Tue	Wed	Thu

"SCENIC LIMITED" STANDARD SLEEPER
Western Pacific—Denver & Rio Grande Western Train No. 2
Missouri Pacific Train No. 12

SAN FRANCISCO TO ST. LOUIS

Lv San Francisco	W. P.	9:20 am	Sun	Mon	Tue	Wed	Thu	Fri	Sat	Sun
Lv Oakland	W. P.	10:00 am	Sun	Mon	Tue	Wed	Thu	Fri	Sat	Sun
Lv Stockton	W. P.	12:35 pm	Sun	Mon	Tue	Wed	Thu	Fri	Sat	Sun
Lv Sacramento	W. P.	2:00 pm	Sun	Mon	Tue	Wed	Thu	Fri	Sat	Sun
Lv Marysville	W. P.	3:10 pm	Sun	Mon	Tue	Wed	Thu	Fri	Sat	Sun
Lv Oroville	W. P.	4:05 pm	Sun	Mon	Tue	Wed	Thu	Fri	Sat	Sun
FEATHER RIVER CANYON	W. P.	9:20 am	Sun	Mon	Tue	Wed	Thu	Fri	Sat	Sun
Ar Salt Lake City	W. P.	13:30 pm	Mon	Tue	Wed	Thu	Fri	Sat	Sun	Mon
Lv Salt Lake City	D. & R. G. W.	4:45 pm	Mon	Tue	Wed	Thu	Fri	Sat	Sun	Mon
Lv Grand Junction	D. & R. G. W.	3:20 am	Tue	Wed	Thu	Fri	Sat	Sun	Mon	Tue
Lv Glenwood Springs	D. & R. G. W.	6:22 am	Tue	Wed	Thu	Fri	Sat	Sun	Mon	Tue
CANYON OF THE COLORADO	D. & R. G. W.	10:00 am	Tue	Wed	Thu	Fri	Sat	Sun	Mon	Tue
EAGLE RIVER CANYON	D. & R. G. W.	2:38 pm	Tue	Wed	Thu	Fri	Sat	Sun	Mon	Tue
Lv ROYAL GORGE	D. & R. G. W.	4:20 pm	Tue	Wed	Thu	Fri	Sat	Sun	Mon	Tue
Ar Pueblo	D. & R. G. W.	5:50 pm	Tue	Wed	Thu	Fri	Sat	Sun	Mon	Tue
Lv Pueblo	M. P.	11:45 am	Wed	Thu	Fri	Sat	Sun	Mon	Tue	Wed
Ar Kansas City	M. P.	8:30 pm	Wed	Thu	Fri	Sat	Sun	Mon	Tue	Wed
Ar St. Louis	M. P.	8:30 pm	Wed	Thu	Fri	Sat	Sun	Mon	Tue	Wed

Western Pacific—
Denver & Rio Grande Western Train No. 4

SAN FRANCISCO TO DENVER

Lv San Francisco	W. P.	7:20 pm	Sun	Mon	Tue	Wed	Thu	Fri	Sat	Sun
Lv Oakland	W. P.	8:10 pm	Sun	Mon	Tue	Wed	Thu	Fri	Sat	Sun
Lv Stockton	W. P.	11:00 pm	Sun	Mon	Tue	Wed	Thu	Fri	Sat	Sun
Lv Sacramento	W. P.	12:50 pm	Mon	Tue	Wed	Thu	Fri	Sat	Sun	Mon
Lv Marysville	W. P.	2:15 am	Mon	Tue	Wed	Thu	Fri	Sat	Sun	Mon
Lv Oroville	W. P.	3:15 am	Mon	Tue	Wed	Thu	Fri	Sat	Sun	Mon
FEATHER RIVER CANYON	W. P.	9:30 am	Mon	Tue	Wed	Thu	Fri	Sat	Sun	Mon
Ar Salt Lake City	W. P.	16:15 am	Tue	Wed	Thu	Fri	Sat	Sun	Mon	Tue
Lv Salt Lake City	D. & R. G. W.	8:10 am	Tue	Wed	Thu	Fri	Sat	Sun	Mon	Tue
Lv Grand Junction	D. & R. G. W.	7:25 am	Tue	Wed	Thu	Fri	Sat	Sun	Mon	Tue
Lv Glenwood Springs	D. & R. G. W.	10:20 am	Tue	Wed	Thu	Fri	Sat	Sun	Mon	Tue
Lv ROYAL GORGE	D. & R. G. W.	6:54 am	Wed	Thu	Fri	Sat	Sun	Mon	Tue	Wed
Ar Pueblo	D. & R. G. W.	8:35 am	Wed	Thu	Fri	Sat	Sun	Mon	Tue	Wed
Ar Colorado Springs	D. & R. G. W.	10:10 am	Wed	Thu	Fri	Sat	Sun	Mon	Tue	Wed
Ar Denver	D. & R. G. W.	12:45 pm	Wed	Thu	Fri	Sat	Sun	Mon	Tue	Wed

Southern Pacific Train No. 10
Denver & Rio Grande Western Train No. 4

SAN FRANCISCO TO DENVER

Lv San Francisco	S. P.	9:00 pm	Sun	Mon	Tue	Wed	Thu	Fri	Sat	Sun
Lv Oakland	S. P.	9:52 pm	Sun	Mon	Tue	Wed	Thu	Fri	Sat	Sun
Lv Sacramento	S. P.	1:15 am	Mon	Tue	Wed	Thu	Fri	Sat	Sun	Mon
Lv Truckee	S. P.	8:30 am	Mon	Tue	Wed	Thu	Fri	Sat	Sun	Mon
Lv Reno	S. P.	10:25 am	Mon	Tue	Wed	Thu	Fri	Sat	Sun	Mon
Lv Hazen	S. P.	12:25 pm	Mon	Tue	Wed	Thu	Fri	Sat	Sun	Mon
Ar Ogden	S. P.	4:15 am	Tue	Wed	Thu	Fri	Sat	Sun	Mon	Tue
Lv Ogden	D. & R. G. W.	6:45 am	Tue	Wed	Thu	Fri	Sat	Sun	Mon	Tue
Lv Salt Lake City	D. & R. G. W.	8:10 am	Tue	Wed	Thu	Fri	Sat	Sun	Mon	Tue
Lv Grand Junction	D. & R. G. W.	7:25 am	Tue	Wed	Thu	Fri	Sat	Sun	Mon	Tue
Lv Glenwood Springs	D. & R. G. W.	10:20 am	Tue	Wed	Thu	Fri	Sat	Sun	Mon	Tue
Lv ROYAL GORGE	D. & R. G. W.	6:54 am	Wed	Thu	Fri	Sat	Sun	Mon	Tue	Wed
Ar Pueblo	D. & R. G. W.	8:35 am	Wed	Thu</						

WESTERN PACIFIC

SCHEDULE OF TRAINS

Denver, Colorado Springs, Pueblo, Grand Junction, Salt Lake City, Ogden, Wells, Elko, Winnemucca, Doyle, Portola, Oroville, Marysville, Sacramento, Stockton, Oakland and San Francisco

WESTBOUND

Miles	(Pacific Time on Western Pacific Mountain Time on Denver & Rio Grande Western)	Elevation	1 Seaside Limited	3 Pacific Express	Miles	(Pacific Time on Western Pacific Mountain Time on Denver & Rio Grande Western)	2 Seaside Limited	4 Pacific Express
0.0	Denver & Rio Grande Western (Union Ferry Station)	5280	* 8.15 am	* 4.00 pm	0.0	Lv SAN FRANCISCO (Union Ferry Station)	* 9.20 am	* 7.20 pm
74.9	Lv DENVER (M.T.)	5758	11.00 am	6.50 pm	3.5	Lv Western Pacific Mole	9.50 am	7.55 pm
119.4	Lv COLORADO SPRINGS	5989	12.30 pm	8.25 pm	6.6	Lv OAKLAND, U.S.M.	10.00 am	8.10 pm
215.1	Lv PUEBLO	7050	4.30 pm	12.25 am	9.7	Lv OAKLAND (Fruitvale Sta.)	x	x
275.8	Lv Leadville	10200	6.30 pm	3.40 pm	13.4	Lv SAN LEANDRO	x	x
300.6	Lv GLENWOOD SPRINGS	5758	10.47 pm	6.50 am	20.4	Lv HAYWARD	x	x
449.2	Lv Grand Junction	4859	2.00 am	3.15 pm	26.6	Lv Decoto	x	x
743.1	Ar SALT LAKE CITY	4224	12.45 pm	3.40 pm	29.7	Lv NILES	x	x
0.0	Lv OGDEN	4233	6.45 am	4.25 pm	36.0	Lv Sunol	x	x
36.9	Ar SALT LAKE CITY	4224	7.55 am	4.25 pm	41.5	Lv Pleasanton	x	x
Western Pacific R.R.								
0.0	(Mountain Time) Lv SALT LAKE CITY	4224	* 1.30 pm	* 10.30 pm	41.5	Lv Livermore	x	x
0.0	(Pacific Time) Lv SALT LAKE CITY	4224	12.30 pm	9.30 pm	41.5	Lv Altamont	x	x
14.4	Lv Garfield	4203	x	10.05 pm	41.5	Lv Midway	x	x
30.8	Lv Lago	4218	1.35 pm	10.50 pm	41.5	Lv Carbona	x	x
30.5	Lv Elmerbeck	4220	x	10.58 pm	41.5	Lv Lyoth	x	x
41.8	Lv Temple	4219	x	11.13 pm	41.5	Lv Niles	x	x
49.1	Lv Delle	4269	x	11.30 pm	41.5	Lv Lathrop	x	x
61.3	Lv Low	4232	x	11.58 pm	41.5	Lv Stockton, U.S.M.	x	x
82.0	Lv Knolls	4230	x	12.20 am	41.5	Lv Kingdon	x	x
92.3	Lv Sardo	4220	x	12.35 am	41.5	Lv Brack	x	x
112.3	Lv Lathrop	4218	x	1.25 am	41.5	Lv Glanville	x	x
121.2	Lv Wendover	4237	x	1.50 am	41.5	Lv Franklin	x	x
133.9	Lv Pilot	5123	x	2.27 am	41.5	Lv Jeffery Shops	x	x
144.2	Lv Proctor	5385	x	2.38 am	41.5	Lv Sacramento, U.S.M.	x	x
155.4	Lv Silver Lake	5819	x	3.01 am	41.5	Lv Del Paso	x	x
174.5	Lv Shafter	5583	x	3.20 am	41.5	Lv Counsman	x	x
189.0	Lv Tobar	5786	x	3.44 am	41.5	Lv Arborga	x	x
203.9	Lv Wells	5902	x	4.08 am	41.5	Lv Marysville	x	x
218.9	Lv Starr	5974	x	4.33 am	41.5	Lv Craig	x	x
239.4	Lv Elburz	5335	x	4.45 am	41.5	Lv Oroville, U.S.M.	x	x
254.4	Lv Pardo	5119	x	5.15 am	41.5	Lv Bidwell	x	x
262.1	Lv Elko	5059	x	5.35 am	41.5	Lv Bloomer	x	x
270.9	Lv Hunter	5009	x	6.00 am	41.5	Lv Las Plumas	x	x
283.1	Lv Palisade	4891	x	6.45 am	41.5	Lv Blinzig	x	x
300.4	Lv Cluro	4764	x	7.32 am	41.5	Lv Poa	x	x
308.3	Lv Beowawe	4696	x	8.02 am	41.5	Lv Mayaro	x	x
317.5	Lv Dumphy	4628	x	8.17 am	41.5	Lv Cresta	x	x
326.7	Lv Kampos	4562	x	8.35 am	41.5	Lv Rock Creek	x	x
337.0	Lv Rennox	4509	x	8.53 am	41.5	Lv Tobin	x	x
352.3	Lv Ellison	4433	x	9.15 am	41.5	Lv Camp Rodgers	x	x
365.6	Lv Red House	4387	x	9.35 am	41.5	Lv Belden	x	x
379.1	Lv Golconda	4344	x	9.58 am	41.5	Lv Howells	x	x
387.0	Lv Bliss	4329	x	10.40 am	41.5	Lv Rich	x	x
395.2	Lv Winnemucca	4299	x	11.10 am	41.5	Lv Virginia	x	x
401.9	Lv Krum	4299	x	11.50 am	41.5	Lv Gray's Flat	x	x
413.0	Lv Pronto	4238	x	12.10 am	41.5	Lv Trawn	x	x
439.7	Lv Antelope	4165	x	1.10 pm	41.5	Lv Paxton	x	x
452.9	Lv Sulphur	4077	x	1.20 pm	41.5	Lv Keddie	x	x
462.5	Lv Renda	4044	x	1.35 pm	41.5	Lv Spring Junction	x	x
476.0	Lv Trego	3912	x	1.42 pm	41.5	Lv Sloat	x	x
			x	1.15 pm	41.5	Lv Feather River Inn	x	x
			x	1.15 pm	41.5	Lv Biarseden	x	x

SIGHTSEEING SALT LAKE CITY
Zion, the city of Saints, capital of Utah, founded in 1847 by the Mormon prophet, Joseph Smith, is the largest city from Illinois. It is a center of business enterprise, natural beauty and historic interest. It is notably well laid out, with wide, straight streets, shaded by poplars, catalpas and other deciduous trees. The city is a beautiful city what is usually first is inspected by the visitor is Temple Square, containing the chief Mormon buildings—the Temple, Tabernacle and Assembly Hall. The Lion Houses, formerly the headquarters of Brigham Young, and the new Administration Building, of the State Capitol Building, built of Utah granite and marble at the cost of the United States Government, are also of interest. State Street, overlooking the city, and contains a museum of natural resources that is well worth visiting. Fort Douglas, U.S. Military Post, is located on the bench of the mountain overlooking the city and can be reached by auto or electric car. The forty-five minute interval between the arrival of the morning and evening trains is a good time to spend in Salt Lake City and enjoy the view of the principal places of interest in Salt Lake City and enjoy the view of the Salt Lake Valley.



HELP PREVENT FOREST FIRES
Do not throw lighted cigars or cigarettes out of **CAR WINDOWS**

EASTBOUND

Miles	(Pacific Time on Western Pacific Mountain Time on Denver & Rio Grande Western)	Elevation	1 Seaside Limited	3 Pacific Express	Miles	(Pacific Time on Western Pacific Mountain Time on Denver & Rio Grande Western)	2 Seaside Limited	4 Pacific Express
0.0	Denver & Rio Grande Western (Union Ferry Station)	5280	* 8.15 am	* 4.00 pm	0.0	Lv SAN FRANCISCO (Union Ferry Station)	* 9.20 am	* 7.20 pm
74.9	Lv DENVER (M.T.)	5758	11.00 am	6.50 pm	3.5	Lv Western Pacific Mole	9.50 am	7.55 pm
119.4	Lv COLORADO SPRINGS	5989	12.30 pm	8.25 pm	6.6	Lv OAKLAND, U.S.M.	10.00 am	8.10 pm
215.1	Lv PUEBLO	7050	4.30 pm	12.25 am	9.7	Lv OAKLAND (Fruitvale Sta.)	x	x
275.8	Lv Leadville	10200	6.30 pm	3.40 pm	13.4	Lv SAN LEANDRO	x	x
300.6	Lv GLENWOOD SPRINGS	5758	10.47 pm	6.50 am	20.4	Lv HAYWARD	x	x
449.2	Lv Grand Junction	4859	2.00 am	3.15 pm	26.6	Lv Decoto	x	x
743.1	Ar SALT LAKE CITY	4224	12.45 pm	3.40 pm	29.7	Lv NILES	x	x
0.0	Lv OGDEN	4233	6.45 am	4.25 pm	36.0	Lv Sunol	x	x
36.9	Ar SALT LAKE CITY	4224	7.55 am	4.25 pm	41.5	Lv Pleasanton	x	x
Western Pacific R.R.								
0.0	(Mountain Time) Lv SALT LAKE CITY	4224	* 1.30 pm	* 10.30 pm	41.5	Lv Livermore	x	x
0.0	(Pacific Time) Lv SALT LAKE CITY	4224	12.30 pm	9.30 pm	41.5	Lv Altamont	x	x
14.4	Lv Garfield	4203	x	10.05 pm	41.5	Lv Midway	x	x
30.8	Lv Lago	4218	1.35 pm	10.50 pm	41.5	Lv Carbona	x	x
30.5	Lv Elmerbeck	4220	x	10.58 pm	41.5	Lv Lyoth	x	x
41.8	Lv Temple	4219	x	11.13 pm	41.5	Lv Niles	x	x
49.1	Lv Delle	4269	x	11.30 pm	41.5	Lv Lathrop	x	x
61.3	Lv Low	4232	x	11.58 pm	41.5	Lv Stockton, U.S.M.	x	x
82.0	Lv Knolls	4230	x	12.20 am	41.5	Lv Kingdon	x	x
92.3	Lv Sardo	4220	x	12.35 am	41.5	Lv Brack	x	x
112.3	Lv Lathrop	4218	x	1.25 am	41.5	Lv Glanville	x	x
121.2	Lv Wendover	4237	x	1.50 am	41.5	Lv Franklin	x	x
133.9	Lv Pilot	5123	x	2.27 am	41.5	Lv Jeffery Shops	x	x
144.2	Lv Proctor	5385	x	2.38 am	41.5	Lv Sacramento, U.S.M.	x	x
155.4	Lv Silver Lake	5819	x	3.01 am	41.5	Lv Del Paso	x	x
174.5	Lv Shafter	5583	x	3.20 am	41.5	Lv Counsman	x	x
189.0	Lv Tobar	5786	x	3.44 am	41.5	Lv Arborga	x	x
203.9	Lv Wells	5902	x	4.08 am	41.5	Lv Marysville	x	x
218.9	Lv Starr	5974	x	4.33 am	41.5	Lv Craig	x	x
239.4	Lv Elburz	5335	x	4.45 am	41.5	Lv Oroville, U.S.M.	x	x
254.4	Lv Pardo	5119	x	5.15 am	41.5	Lv Bidwell	x	x
262.1	Lv Elko	5059	x	5.35 am	41.5	Lv Bloomer	x	x
270.9	Lv Hunter	5009	x	6.00 am	41.5	Lv Las Plumas	x	x
283.1	Lv Palisade	4891	x	6.45 am	41.5	Lv Blinzig	x	x
300.4	Lv Cluro	4764	x	7.32 am	41.5	Lv Poa	x	x
308.3	Lv Beowawe	4696	x	8.02 am	41.5	Lv Mayaro	x	x
317.5	Lv Dumphy	4628	x	8.17 am	41.5	Lv Cresta	x	x
326.7	Lv Kampos	4562	x	8.35 am	41.5	Lv Rock Creek	x	x
337.0	Lv Rennox	4509	x	8.53 am	41.5	Lv Tobin	x	x
352.3	Lv Ellison	4433	x	9.15 am	41.5	Lv Camp Rodgers	x	x
365.6	Lv Red House	4387	x	9.35 am	41.5	Lv Belden	x	x
379.1	Lv Golconda	4344	x	9.58 am	41.5	Lv Howells	x	x
387.0	Lv Bliss	4329	x	10.40 am	41.5	Lv Rich	x	x
395.2	Lv Winnemucca	4299	x	11.10 am	41.5	Lv Virginia	x	x
401.9	Lv Krum	4299	x	11.50 am	41.5	Lv Gray's Flat	x	x
413.0	Lv Pronto	4238	x	12.10 am	41.5	Lv Trawn	x	x
439.7	Lv Antelope	4165	x	1.10 pm	41.5	Lv Paxton	x	x
452.9	Lv Sulphur	4077	x	1.20 pm	41.5	Lv Keddie	x	x
462.5	Lv Renda	4044	x	1.35 pm	41.5	Lv Spring Junction	x	x
476.0	Lv Trego	3912	x	1.42 pm	41.5	Lv Sloat	x	x
			x	1.15 pm	41.5	Lv Feather River Inn	x	x
			x	1.15 pm	41.5	Lv Biarseden	x	x

SIGHTSEEING SALT LAKE CITY
Zion, the city of Saints, capital of Utah, founded in 1847 by the Mormon prophet, Joseph Smith, is the largest city from Illinois. It is a center of business enterprise, natural beauty and historic interest. It is notably well laid out, with wide, straight streets, shaded by poplars, catalpas and other deciduous trees. The city is a beautiful city what is usually first is inspected by the visitor is Temple Square, containing the chief Mormon buildings—the Temple, Tabernacle and Assembly Hall. The Lion Houses, formerly the headquarters of Brigham Young, and the new Administration Building, of the State Capitol Building, built of Utah granite and marble at the cost of the United States Government, are also of interest. State Street, overlooking the city, and contains a museum of natural resources that is well worth visiting. Fort Douglas, U.S. Military Post, is located on the bench of the mountain overlooking the city and can be reached by auto or electric car. The forty-five minute interval between the arrival of the morning and evening trains is a good time to spend in Salt Lake City and enjoy the view of the principal places of interest in Salt Lake City and enjoy the view of the Salt Lake Valley.



HELP PREVENT FOREST FIRES
Do not throw lighted cigars or cigarettes out of **CAR WINDOWS**

Miles	(Pacific Time on Western Pacific Mountain Time on Denver & Rio Grande Western)	Elevation	1 Seaside Limited	3 Pacific Express	Miles	(Pacific Time on Western Pacific Mountain Time on Denver & Rio Grande Western)	2 Seaside Limited	4 Pacific Express
489.2	Lv Gerlach	3951	2.45 am	1.50 pm	313.6	Lv Chio	2	8.55 am
503.5	Lv Reno	3854	x	2.35 pm	321.4	Lv Portola, U.S.M.	2	9.30 am
511.3	Lv Byron	3891	x	2.55 pm	326.0	Lv Calpine Jct.	2	9.52 am
543.6	Lv Sand Pass	4188	x	3.31 pm	339.6	Lv Chilcoot	2	10.16 am
519.9	Lv Flanagan	3995	x	3.41 pm	341.7	Lv Reno Junction	2	10.32 am
556.0	Ar Hackstaff	4118	x	3.51 pm	346.0	Lv Scotts	2	10.40 am
594.6	Lv Doyle	4266	x	4.09 pm	352.1	Lv Red Rock	2	10.53 am
569.3	Lv Omira	4351	x	4.21 pm	355.5	Lv Constantia	2	11.09 am
572.0	Lv Red Rock	4452	x	4.28 pm	358.2	Lv Omira	2	11.17 am
581.5	Lv Reno Junction	4574	x	4.35 pm	362.9	Ar Doyle	2	11.32 am
585.8	Lv Reno Junction	4574	x	4.48 pm	371.6	Lv Hackstaff	2	11.42 am
587.9	Lv Chilcoot	4814	x	5.08 pm	383.9	Lv Flanagan	2	11.52 am
599.4	Lv Hawley	4965	x	5.40 pm	393.6	Lv Sand Pass	2	12.04 am
601.0	Lv Calpine Jct.	4874	x	6.05 pm	416.4	Lv Reynard	2	12.12 am
613.9	Lv Portola, U.S.M.	4832	6.15 am	6.05 pm	424.0	Lv Bronte	2	12.18 am
617.2	Lv Biarseden	4581	6.38 am	6.25 pm	438.3	Ar Gerlach	2	12.50 am
619.5	Lv Feather River Inn	4411	6.38 am	6.36 pm	451.5			

DENVER & RIO GRANDE WESTERN - WESTERN PACIFIC

COLORADO AND NEW MEXICO LINES

DENVER, LITTLETON AND FT. LOGAN

READ DOWN				READ UP			
Miles	STATIONS	Eleva- tion		Miles	STATIONS	Eleva- tion	
37	PM DENVER	5280	7.40	31	AM DENVER	5280	7.40
35	PM Burnham	5241	7.45	31	AM Burnham	5241	7.45
33	PM Overland Pk. Jct.	5276	7.50	31	AM Overland Pk. Jct.	5276	7.50
31	PM PETERSBURG	5322	7.55	31	AM PETERSBURG	5322	7.55
	6.29	4.12	12.33		6.58	10.0	12.33
	6.15	4.30	12.12		7.10	10.3	12.12

See Table No. 1 for additional Denver-Littleton service.

DENVER, COLORADO SPRINGS, PUEBLO AND WESTCLIFFE

READ DOWN				READ UP			
Miles	STATIONS	Eleva- tion		Miles	STATIONS	Eleva- tion	
1-49	PM DENVER	5280	8.15	50-2	AM DENVER	5280	8.30
	PM COLORADO SPRINGS	5989	11.00		AM COLORADO SPRINGS	5989	11.00
	PM PUEBLO	4668	12.30		AM PUEBLO	4668	12.30
	PM TEXAS CREEK	6210	2.59		AM TEXAS CREEK	6210	2.59
	3.25	184.1	11.4		3.30	184.1	11.4
	4.30	209.4	11.7		4.35	209.4	11.7
	5.25	209.4	11.7		5.30	209.4	11.7

MONARCH BRANCH

READ DOWN				READ UP			
Miles	STATIONS	Eleva- tion		Miles	STATIONS	Eleva- tion	
215.1	PM SALIDA	7050	2.15		AM SALIDA	7050	2.15
236.4	PM MONARCH	10028	2.36		AM MONARCH	10028	2.36

DENVER, COLORADO SPRINGS, PUEBLO, SALIDA AND ALAMOSA

READ DOWN				READ UP			
Miles	STATIONS	Eleva- tion		Miles	STATIONS	Eleva- tion	
15-317	PM DENVER	5280	7.00	318-2	AM DENVER	5280	8.30
	PM COLORADO SPRINGS	5989	9.45		AM COLORADO SPRINGS	5989	9.45
	PM PUEBLO	4668	11.50		AM PUEBLO	4668	11.50
	PM SALIDA	7050	3.55		AM SALIDA	7050	3.55
	11.50	119.4	11.4		11.50	119.4	11.4
	11.55	119.4	11.4		11.55	119.4	11.4
	12.55	215.1	11.7		12.05	215.1	11.7
	2.38	245.3	11.7		10.25	245.3	11.7
	2.53	250.8	11.7		10.09	250.8	11.7
	3.23	262.7	11.7		9.40	262.7	11.7
	262.7	Ar. MOFFAT	Ar. 7579				
	273.7	Ar. Crestone	Ar. 7881				
	3.52	274.3	11.7		9.02	274.3	11.7
	4.07	280.3	11.7		8.44	280.3	11.7
	4.22	286.8	11.7		8.26	286.8	11.7
	5.00	300.4	11.7		7.50	300.4	11.7

DENVER, COLORADO SPRINGS, PUEBLO AND ASPEN

READ DOWN				READ UP			
Miles	STATIONS	Eleva- tion		Miles	STATIONS	Eleva- tion	
3-229	PM DENVER	5280	4.00	230-16	AM DENVER	5280	7.30
	PM COLORADO SPRINGS	5989	6.50		AM COLORADO SPRINGS	5989	6.50
	PM PUEBLO	4668	8.25		AM PUEBLO	4668	8.25
	PM GLENWOOD SPRINGS	5758	6.50		AM GLENWOOD SPRINGS	5758	6.50
	7.30	360.1	11.7		3.30	360.1	11.7
	8.50	378.0	11.7		2.30	378.0	11.7
	9.30	382.0	11.7		1.32	382.0	11.7
	11.25	402.8	11.7		12.15	402.8	11.7

DENVER, COLORADO SPRINGS, PUEBLO, WALSENBURG AND TRINIDAD

READ DOWN				READ UP			
Miles	STATIONS	Eleva- tion		Miles	STATIONS	Eleva- tion	
15-115	PM DENVER	5280	7.00	110-10	AM DENVER	5280	7.30
1-109	PM Pueblo	4668	12.15	116-16	AM Pueblo	4668	12.15
	PM PUEBLO	4668	12.15		AM PUEBLO	4668	12.15
	11.55	119.4	11.4		11.50	119.4	11.4
	11.51	119.4	11.4		11.51	119.4	11.4
	12.52	121.4	11.4		12.52	121.4	11.4
	11.12	134.0	11.4		11.12	134.0	11.4
	1.12	142.7	11.4		1.12	142.7	11.4
	1.30	142.7	11.4		1.30	142.7	11.4
	1.50	142.7	11.4		1.50	142.7	11.4
	1.54	142.7	11.4		1.54	142.7	11.4
	2.27	158.7	11.4		2.27	158.7	11.4
	2.42	175.2	11.4		2.42	175.2	11.4
	2.47	175.2	11.4		2.47	175.2	11.4
	3.28	177.6	11.4		3.28	177.6	11.4
	3.53	188.8	11.4		3.53	188.8	11.4
	4.05	194.5	11.4		4.05	194.5	11.4
	4.13	198.1	11.4		4.13	198.1	11.4
	4.30	206.0	11.4		4.30	206.0	11.4
	4.40	210.3	11.4		4.40	210.3	11.4

* Daily. † Daily except Sunday. ‡ Stops on flag. § Runs via Walsenburg Junction.

DENVER, COLORADO SPRINGS, PUEBLO AND GRAND JUNCTION
VIA MARSHALL PASS

READ DOWN				READ UP			
Miles	STATIONS	Eleva- tion		Miles	STATIONS	Eleva- tion	
15-315	PM DENVER	5280	7.00	316-16	AM DENVER	5280	7.30
	PM COLORADO SPRINGS	5989	9.45		AM COLORADO SPRINGS	5989	9.45
	PM PUEBLO	4668	11.50		AM PUEBLO	4668	11.50
	1.00	151.9	11.4		1.50	151.9	11.4
	1.30	160.0	11.4		1.30	160.0	11.4
	1.64	164.8	11.4		1.64	164.8	11.4
	2.15	215.1	11.4		2.15	215.1	11.4
	6.00	215.1	11.4		6.00	215.1	11.4
	6.41	226.0	11.4		6.41	226.0	11.4
	8.10	240.7	11.4		8.10	240.7	11.4
	9.15	257.2	11.4		9.15	257.2	11.4
	9.44	269.5	11.4		9.44	269.5	11.4
	10.04	276.8	11.4		10.04	276.8	11.4
	10.35	288.6	11.4		10.35	288.6	11.4
	10.40	288.6	11.4		10.40	288.6	11.4
	11.02	299.2	11.4		11.02	299.2	11.4
	11.22	307.1	11.4		11.22	307.1	11.4
	11.45	314.0	11.4		11.45	314.0	11.4
	12.30	329.0	11.4		12.30	329.0	11.4
	2.25	351.5	11.4		2.25	351.5	11.4
	2.40	351.5	11.4		2.40	351.5	11.4
	3.05	362.2	11.4		3.05	362.2	11.4
	3.35	372.8	11.4		3.35	372.8	11.4
	5.15	411.8	11.4		5.15	411.8	11.4
	6.00	424.2	11.4		6.00	424.2	11.4

DENVER, COLORADO SPRINGS, PUEBLO, CRESTED BUTTE, PITKIN AND BALDWIN

READ DOWN				READ UP			
Miles	STATIONS	Eleva- tion		Miles	STATIONS	Eleva- tion	
15-315	PM DENVER	5280	7.00	316-16	AM DENVER	5280	7.30
	PM COLORADO SPRINGS	5989	9.45		AM COLORADO SPRINGS	5989	9.45
	PM PUEBLO	4668	11.50		AM PUEBLO	4668	11.50
	10.04	276.8	11.4		10.04	276.8	11.4
	10.35	288.6	11.4		10.35	288.6	11.4
	10.45	288.6	11.4		10.45	288.6	11.4
	11.20	299.4	11.4		11.20	299.4	11.4
	11.50	304.7	11.4		11.50	304.7	11.4
	12.55	316.3	11.4		12.55	316.3	11.4
	8.55	388.6	11.4		8.55	388.6	11.4
	10.00	376.8	11.4		10.00	376.8	11.4
	11.40	385.9	11.4		11.40	385.9	11.4
	11.40	291.9	11.4		11.40	291.9	11.4
	7.15	288.6	11.4		7.15	288.6	11.4
	9.05	305.8	11.4		9.05	305.8	11.4

DENVER, COLORADO SPRINGS, PUEBLO AND LAKE CITY

READ DOWN				READ UP			
Miles	STATIONS	Eleva- tion		Miles	STATIONS	Eleva- tion	
15-315	PM DENVER	5280	7.00	352	AM DENVER	5280	7.30
347	PM COLORADO SPRINGS	5989	9.45	352	AM COLORADO SPRINGS	5989	9.45
Mixed	PM PUEBLO	4668	11.50	Mixed	AM PUEBLO	4668	11.50
	10.04	276.8	11.4		10.04	276.8	11.4
	10.35	288.6	11.4		10.35	288.6	11.4
	10.45	288.6	11.4		10.45	288.6	11.4
	11.20	299.4	11.4		11.20	299.4	11.4
	11.50	304.7	11.4		11.50	304.7	11.4
	12.55	316.3	11.4		12.55	316.3	11.4
	8.55	388.6	11.4		8.55	388.6	11.4
	10.00	376.8	11.4		10.00	376.8	11.4
	11.40	385.9	11.4		11.40	385.9	11.4
	11.40	291.9	11.4		11.40	291.9	11.4
	7.15	288.6	11.4		7.15	288.6	11.4
	9.05	305.8	11.4		9.05	305.8	11.4

DENVER, COLORADO SPRINGS, PUEBLO, RIDGWAY AND OURAY

READ DOWN				READ UP			
Miles	STATIONS	Eleva- tion		Miles	STATIONS	Eleva- tion	
15-315	PM DENVER	5280	7.00	320-16	AM DENVER	5280	7.30
319	PM COLORADO SPRINGS	5989	9.45	320-16	AM COLORADO SPRINGS	5989	9.45
	PM PUEBLO	4668	11.50		AM PUEBLO	4668	11.50
	11.50	119.4	11.4		11.50	119.4	11.4
	11.50	119.4	11.4		11.50	119.4	11.4
	12.55	215.1	11.4		12.55	215.1	11.4
	2.50	351.5	11.4		2.50	351.5	11.4
	4.15	377.1	11.4		4.15	377.1	11.4
	5.10	387.4	11.4		5.10	387.4	11.4

DENVER, COLORADO SPRINGS, PUEBLO AND SOMERSET

READ DOWN				READ UP			
Miles	STATIONS	Eleva- tion		Miles	STATIONS	Eleva- tion	
15-315	PM DENVER	5280	7.00	321-16	AM DENVER	5280	7.30
322	PM COLORADO SPRINGS	5989	9.45	321-16	AM COLORADO SPRINGS		

DENVER & RIO GRANDE WESTERN - WESTERN PACIFIC

UTAH LINES

PARK CITY BRANCH

READ DOWN		Table No. 20 STATIONS		READ UP	
Miles	102	Elevation	101	Miles	
8.20 am	0.0	Lv. SALT LAKE CITY	Ar 4224	3.40 pm	
8.28 am	0.6	Lv. Roper	Ar 4360	3.26 pm	
8.40 am	5.4	Lv. Sugar House	Ar 4370	3.17 pm	
8.55 am	10.2	Lv. Le Grand	Ar 4980	3.01 pm	
9.04 am	13.1	Lv. Dale	Ar 5350	2.51 pm	
9.25 am	17.3	Lv. Barvay	Ar 6290	2.35 pm	
9.45 am	21.4	Lv. Altus	Ar 6900	2.17 pm	
9.58 am	26.1	Lv. Gogorza	Ar 6328	2.00 pm	
11.06 am	28.6	Lv. Kimballs	Ar 6393	1.51 pm	
11.11 am	30.9	Lv. Snyderville	Ar 6550	1.43 pm	
10.25 am	34.9	Ar. PARK CITY	Lv 6970	1.30 pm	

BINGHAM BRANCH

READ DOWN		Table No. 21 STATIONS		READ UP	
Miles		Elevation		Miles	
0.0	Lv. SALT LAKE CITY	Ar 4224			
10.6	Lv. MIDVALE	Ar 4365			
10.6	Lv. DALTON	Ar 5118			
22.0	Lv. Lead Mine	Ar 5418			
24.6	Ar. BINGHAM	Lv 5882			

PROVO CANON BRANCH

READ DOWN		Table No. 22 STATIONS		READ UP	
Miles	410-308	Elevation	307-409	Miles	
3.45 pm	0.0	Lv. SALT LAKE CITY	Ar 4224	11.40 am	
4.37 pm	29.3	Lv. Lehi	Ar 4550	10.44 am	
4.43 pm	31.5	Lv. American Fork	Ar 4563	10.37 am	
5.15 pm	44.1	Lv. PROVO	Ar 4512	10.00 am	
5.00 pm	44.1	Lv. PROVO	Ar 4512	9.00 am	
6.05 pm	45.2	Lv. Smoot	Ar 4560	8.43 am	
6.23 pm	49.9	Lv. Caryhurst	Ar 4798	8.26 am	
6.27 pm	50.8	Lv. Olmstead	Ar 4831	8.22 am	
6.46 pm	53.4	Lv. Nunn's	Ar 5001	8.06 am	
6.54 pm	54.7	Lv. Upper Falls	Ar 5177	7.66 am	
7.02 pm	55.9	Lv. Vivian Park	Ar 5193	7.40 am	
7.07 pm	57.1	Lv. Wildwood	Ar 5215	7.35 am	
7.32 pm	62.3	Lv. Wallburg	Ar 5300	7.24 am	
7.53 pm	65.3	Lv. Charleston	Ar 5431	7.12 am	
8.15 pm	69.8	Ar. HEBER	Lv 5559	7.00 am	

TINTIC BRANCH

READ DOWN		Table No. 23 STATIONS		READ UP	
Miles	410	Elevation	400	Miles	
3.45 pm	0.0	Lv. SALT LAKE CITY	Ar 4224	11.40 am	
5.15 pm	44.1	Lv. Provo	Ar 4555	10.00 am	
5.35 pm	49.4	Lv. Springville	Ar 4555	9.30 am	
5.46 pm	53.2	Lv. Spanish Fork	Ar 4558	9.20 am	
5.51 pm	55.5	Lv. Leland	Ar 4560	9.12 am	
6.03 pm	60.2	Lv. Payson	Ar 4610	9.02 am	
6.14 pm	64.7	Lv. Santaquin	Ar 4761	8.51 am	
6.30 pm	71.5	Lv. Coshon	Ar 4530	8.34 am	
6.33 pm	74.6	Lv. Elberta	Ar 4657	8.27 am	
7.40 pm	87.5	Lv. Knightville	Ar 5067	7.45 am	
7.53 pm	89.1	Lv. Eureka	Ar 5452	7.42 am	
8.05 pm	91.4	Ar. MAMMOTH JCT.	Lv 6185		
8.20 pm	92.2	Lv. MAMMOTH	Ar 6340	7.25 am	
8.30 pm	91.4	Ar. MAMMOTH JCT.	Lv 6185		
8.20 pm	93.1	Ar. SILVER CITY	Lv 6112	7.15 am	

PLEASANT VALLEY BRANCH

READ DOWN		Table No. 24 STATIONS		READ UP	
Miles	4-652 Mixed	Elevation	651-1 Mixed	Miles	
8.10 am	0.0	Lv. SALT LAKE CITY	Ar 4224	12.45 pm	
9.27 am	44.1	Lv. Provo	Ar 4512	11.30 am	
10.18 am	65.5	Lv. Thistle	Ar 5033	10.50 am	
12.14 pm	102.0	Lv. Colton	Ar 7171	9.03 am	
1.10 pm	117.3	Lv. Scofield	Ar 7171	8.25 am	
2.20 pm	117.3	Lv. Scofield	Ar 7075	7.15 am	
3.00 pm	123.1	Ar. CLEAR CREEK	Lv 8230	6.20 am	

SUNNYSIDE BRANCH

READ DOWN		Table No. 25 STATIONS		READ UP	
Miles	138 Mixed	Elevation	139 Mixed	Miles	
2.45 pm	0.0	Lv. HELPER	Ar 7440	12.30 pm	
5.01 pm	17.0	Lv. MOUNDS	Ar 5442	10.25 pm	
5.10 pm	0.0	Lv. MOUNDS	Ar 5442	10.15 am	
7.00 pm	17.0	Ar. SUNNYSIDE	Lv 6716	8.15 am	

UTAH LINES

MARYSVALE BRANCH

READ DOWN		Table No. 26 STATIONS		READ UP	
Miles	512	Elevation	511	Miles	
8.30 am	0.0	Lv. SALT LAKE CITY	Ar 4224	4.59 pm	
8.50 am	10.6	Lv. MIDVALE	Ar 4365	4.36 pm	
9.20 am	28.2	Lv. Lehi	Ar 4550	4.04 pm	
9.26 am	31.5	Lv. American Fork	Ar 4563	3.58 pm	
9.55 am	44.1	Lv. Provo	Ar 4512	3.34 pm	
10.10 am	49.4	Lv. Springville	Ar 4555	3.20 pm	
10.45 am	65.5	Ar. THISTLE	Lv 5033	2.50 pm	
10.50 am	65.5	Lv. THISTLE	Ar 5033	2.45 pm	
12.13 pm	97.5	Lv. Fairview	Ar 6033	1.22 pm	
12.30 pm	102.1	Lv. Mount Pleasant	Ar 5857	1.02 pm	
12.45 pm	109.5	Lv. Spring City	Ar 5696	12.45 pm	
1.15 pm	118.9	Lv. Ephraim	Ar 5543	12.20 pm	
1.35 pm	126.3	Ar. MANTI	Lv 5530	12.01 pm	
2.08 pm	131.8	Lv. Sterling	Ar 5414	11.23 am	
2.27 pm	138.4	Lv. Gunnison	Ar 5215	11.05 am	
3.03 pm	151.9	Lv. Salina	Ar 5160	10.30 am	
3.14 pm	157.1	Lv. Aurora	Ar 5190	10.16 am	
3.26 pm	161.7	Lv. Sigurd	Ar 5270	10.05 am	
3.43 pm	169.3	Lv. Richard	Ar 5305	9.45 am	
4.07 pm	177.2	Lv. Elsinore	Ar 5335	9.26 am	
4.20 pm	182.0	Lv. Joseph	Ar 5435	9.15 am	
4.27 pm	185.0	Lv. Vaca	Ar 5518	9.08 am	
4.35 pm	189.0	Lv. Sevier	Ar 5542	9.05 am	
5.10 pm	197.7	Ar. MARYSVALE	Lv 5589	8.30 am	

SAN PETE VALLEY BRANCH

READ DOWN		Table No. 27 STATIONS		READ UP	
Miles	515 Mixed	Elevation	516 Mixed	Miles	
8.00 am	0.0	Lv. MANTI	Ar 5530	3.00 pm	
8.30 am	10.0	Lv. Ephraim	Ar 5492	2.35 pm	
9.03 am	18.0	Lv. Chester	Ar 5460	1.50 pm	
9.20 am	21.4	Lv. Moroni	Ar 5495	1.38 pm	
9.39 am	25.3	Lv. Freedom	Ar 5713	1.20 pm	
9.45 am	27.0	Lv. Cedar Cliff	Ar 5810	1.15 pm	
9.58 am	30.3	Lv. Fountain Green	Ar 6000	1.10 pm	
10.19 am	34.6	Lv. Divide	Ar 6276	11.45 am	
11.03 am	38.8	Lv. Nebo Junction	Ar 5758	11.20 am	
11.04 am	42.8	Lv. Gypsum	Ar 5257	11.52 am	
10.55 am	44.8	Ar. NEPHI	Lv 5006	11.45 am	

COLORADO, UTAH AND NEW MEXICO CONNECTIONS

DENVER, COLORADO SPRINGS, PUEBLO AND THE UTAH RESERVATION VIA MACK AND THE UTAH RAILWAY

READ DOWN		STATIONS		READ UP	
Miles	1-1	Elevation	2-4	Miles	
8.15 am	0	Lv. DENVER	Ar 12.45 pm		
11.00 am	75	Lv. Colorado Springs	Ar 10.10 am		
12.30 pm	119	Lv. Pueblo	Ar 8.35 am		
1.23 pm	469	Ar. MACK	Lv 6.24 am		
8.15 am	469	Lv. MACK	Ar 4.50 pm		
9.05 am	489	Lv. Carbonera	Ar 3.20 pm		
9.40 am	497	Lv. Atcheco	Ar 2.45 pm		
10.35 am	503	Lv. Baxter Pass	Ar 1.77 pm		
11.55 am	523	Lv. Dragon Junction	Ar 1.17 pm		
12.30 pm	532	Lv. WATSON	Ar 12.40 pm		

DENVER, COLORADO SPRINGS, PUEBLO AND TORRANCE, N. M. VIA SANTA FE AND NEW MEXICO CENTRAL RAILROAD

READ DOWN		STATIONS		READ UP	
Miles	72 15-2	Elevation	1-16 71	Miles	
7.00 pm	0	Lv. DENVER	Ar 7.30 am		
11.45 pm	75	Lv. COLORADO SPRINGS	Ar 4.45 am		
1.45 pm	119	Lv. PUEBLO	Ar 2.35 am		
3.35 pm	405	Ar. SANTA FE	Lv 11.05 am		
9.35 am	405	Lv. SANTA FE	Ar 11.05 am		
10.45 am	427	Lv. Kennedy	Ar 12.20 pm	2.25 pm	
11.05 am	433	Lv. Clark	Ar 12.01 pm	2.00 pm	
12.10 pm	448	Lv. Stanley	Ar 11.25 am	1.10 pm	
1.15 pm	449	Lv. Moriarty	Ar 10.50 am	12.10 pm	
1.40 pm	468	Lv. McIntosh	Ar 10.25 am	11.35 am	
2.00 pm	473	Lv. Estancia	Ar 10.05 am	11.10 am	
2.40 pm	486	Lv. Willard	Ar 9.25 am	9.45 am	
3.10 pm	496	Lv. TORRANCE	Ar 7.45 am	8.00 am	
5.10 pm	521				

MIDLAND TERMINAL RAILWAY

READ DOWN		STATIONS		READ UP	
Miles	1	Elevation	2	Miles	
11.30 am	0	Lv. COLORADO SPRINGS	Ar 6.15 pm		
11.40 am	3.0	Lv. Colorado City	Ar 6.00 pm		
12.12 pm	11.5	Lv. Natron	Ar 5.52 pm		
2.15 pm	51.6	Lv. Cascade	Ar 3.45 pm		
2.30 pm	56.9	Ar. CRIPPLE CREEK	Lv 3.30 pm		

* Daily. † Daily except Sunday. ‡ Meal stations. § Monday, Wednesday and Friday. ¶ Tuesday, Thursday and Saturday.

DENVER & RIO GRANDE WESTERN - WESTERN PACIFIC

COLORADO CONNECTIONS

READ DOWN		COLORADO & WYOMING RAILWAY		READ UP	
Miles	1	Elevation	2	Miles	
8.30 am	0	Lv. TRINIDAD	Ar 4.30 pm		
8.49 am	6	Lv. Longdale	Ar 4.05 pm		
9.10 am	14	Lv. Segundo	Ar 3.46 pm		
9.22 am	18	Lv. Primero	Ar 3.30 pm		
9.25 am	18	Lv. Primero	Ar 2.17 pm		
10.40 am	31	Ar. TERCIO	Lv 1.00 pm		

READ DOWN		SAN LUIS SOUTHERN RAILWAY		READ UP	
Miles	1 Mixed	Elevation	2 Mixed	Miles	
8.30 am	0	Lv. BLANCA	Ar 5.15 pm		
8.55 am	8	Lv. Ojito	Ar 4.50 pm		
9.35 am	16	Lv. SAN ACACIO	Ar 4.25 pm		
10.10 am	24	Lv. MESITA	Ar 3.50 pm		
10.35 am	31	Ar. JAROSO	Lv 3.15 pm		

READ DOWN		SAN LUIS CENTRAL RAILWAY		READ UP	
Miles	2 Mixed	Elevation	1 Mixed	Miles	
9.15 am	0	Lv. MONTE VISTA	Ar 4.50 pm		
9.20 am	0	Lv. Sugar Junction	Ar 4.40 pm		
9.25 am	0	Lv. Sugar Factory	Ar 4.35 pm		
9.48 am	0	Lv. North Farm	Ar 4.25 pm		
10.00 am	11	Lv. Dunlap	Ar 4.10 pm		
10.15 am	15	Lv. Ansel	Ar 4.00 pm		
		Lv. CENTER	Ar 3.50 pm		

WESTERN PACIFIC CONNECTIONS

READ DOWN		INDIAN VALLEY RAILROAD		READ UP	
Miles	2	Elevation	1	Miles	
8.00 am	0	Lv. PAXTON	Ar 5.35 pm		
8.25 am	4	Lv. Indian Falls	Ar 5.02 pm		
9.00 am	8	Lv. Crescent Mills	Ar 4.40 pm		
9.20 am	12	Lv. Veramont	Ar		

MAP OF THE DENVER & RIO GRANDE WESTERN RAILROAD WESTERN PACIFIC RAILROAD AND CONNECTIONS

— SINGLE TRACK — DOUBLE TRACK



DENVER & RIO GRANDE WESTERN - WESTERN PACIFIC

CONDENSED THROUGH SCHEDULE
 BY WAY OF
DENVER & RIO GRANDE WESTERN R. R., OREGON SHORT LINE and OREGON-WASHINGTON R. R. & NAVIGATION CO.
 BETWEEN
Denver, Colorado Springs and Pueblo
 AND
Butte, Helena, Spokane, Portland, Seattle, Tacoma and the Northwest

WESTBOUND			ALL TRAINS DAILY			EASTBOUND		
READ DOWN			STATIONS			READ UP		
3-31 Butte Express	3-33-23 Portland Express	1-29-17 Butte Express	Miles	Elevation	24-32-26-34-4 Portland Lake Express	26-34-4 Portland Lake Express	3-19 Salt Lake Express	1-1 Salt Lake Limited
4:00 pm	6:00 pm	8:15 am	0	5280	8:30 pm	12:45 pm	4:00 pm	8:15 am
6:00 pm	8:00 pm	10:14 am	52	7237	6:55 pm	11:10 am	6:00 pm	10:14 am
8:25 pm	10:25 pm	12:30 pm	119	4668	4:20 pm	8:35 am	8:25 pm	11:00 am
9:30 pm	11:30 pm	1:37 pm	152	5199	3:12 pm	7:25 am	9:30 pm	12:30 pm
9:55 pm	11:55 pm	1:58 pm	160	5344	2:55 pm	7:10 am	9:55 pm	1:37 pm
12:25 am	12:25 am	4:30 pm	215	7050	12:45 pm	5:00 am	12:25 am	2:30 pm
c 1:20 am	c 1:20 am	5:27 pm	240	7968	11:58 am	4:04 am	c 1:20 am	3:12 pm
3:02 am	3:02 am	6:20 pm	276	10200	11:25 am	3:30 am	3:02 am	5:27 pm
3:42 am	3:42 am	7:25 pm	281	10240	10:30 am	2:30 am	3:42 am	6:20 pm
4:20 am	4:20 am	8:04 pm	294	8608	9:50 am	1:50 am	4:20 am	7:25 pm
6:50 am	6:50 am	10:47 pm	300	8758	9:25 am	1:20 pm	6:50 am	8:04 pm
7:17 am	7:17 am	11:43 pm	373	5562	8:50 am	12:50 pm	7:17 am	9:25 pm
7:48 am	7:48 am	12:43 pm	386	5310	8:23 am	12:14 pm	7:48 am	10:47 pm
8:23 am	8:23 am	1:43 pm	404	5104	7:48 am	11:43 pm	8:23 am	12:43 pm
9:23 am	9:23 am	2:43 pm	437	4739	6:50 am	10:47 pm	9:23 am	1:43 pm
10:00 am	10:00 am	3:43 pm	450	4583	6:17 am	9:50 pm	10:00 am	11:43 pm
10:15 am	10:15 am	4:43 pm	450	4583	5:46 am	9:19 pm	10:15 am	10:47 pm
10:33 am	10:33 am	5:43 pm	461	4510	5:10 am	8:48 pm	10:33 am	9:50 pm
10:51 am	10:51 am	6:43 pm	469	4540	4:35 am	8:24 pm	10:51 am	9:25 pm
12:53 pm	12:53 pm	7:43 pm	528	5100	4:00 am	7:49 pm	12:53 pm	8:50 pm
1:40 pm	1:40 pm	8:43 pm	555	4080	3:25 pm	6:24 pm	1:40 pm	8:23 am
4:05 pm	4:05 pm	9:38 pm	619	5546	2:55 pm	5:55 pm	4:05 pm	7:49 pm
4:30 pm	4:30 pm	10:38 pm	627	6349	2:25 pm	5:25 pm	4:30 pm	7:25 pm
4:50 pm	4:50 pm	11:38 pm	630	6120	1:50 pm	5:00 pm	4:50 pm	7:00 pm
5:35 pm	5:35 pm	12:38 pm	645	7170	1:25 pm	4:35 pm	5:35 pm	6:48 pm
5:55 pm	5:55 pm	1:38 pm	652	7440	11:50 am	4:05 pm	5:55 pm	6:24 pm
7:30 pm	7:30 pm	2:38 pm	681	5033	11:15 am	3:30 pm	7:30 pm	5:55 pm
8:15 pm	8:15 pm	3:38 pm	696	4555	10:40 am	3:00 pm	8:15 pm	5:30 pm
9:40 pm	9:40 pm	4:38 pm	701	4517	10:05 am	2:25 pm	9:40 pm	5:05 pm
9:55 pm	9:55 pm	5:38 pm	745	4224	9:40 am	1:50 pm	9:55 pm	4:45 pm
11:05 pm	11:05 pm	6:38 pm	745	4224	9:15 am	1:25 pm	11:05 pm	4:20 pm
11:50 pm	11:50 pm	7:38 pm	745	4224	8:40 am	1:00 pm	11:50 pm	4:00 pm
1:15 am	1:15 am	8:38 pm	782	4293	8:05 am	12:25 pm	1:15 am	3:45 pm
2:55 am	2:55 am	9:38 pm	831	4445	7:30 am	11:50 pm	2:55 am	3:20 pm
5:05 am	5:05 am	10:38 pm	893	4739	6:55 am	11:20 pm	5:05 am	3:00 pm
6:45 am	6:45 am	11:38 pm	941	4461	6:20 am	10:50 pm	6:45 am	2:45 pm
7:10 am	7:10 am	12:38 pm	918	4461	5:45 am	10:25 pm	7:10 am	2:25 pm
9:00 am	9:00 am	1:38 pm	966	4099	5:10 am	9:50 pm	9:00 am	2:00 pm
4:25 pm	4:25 pm	2:38 pm	1173	6665	4:35 am	9:00 pm	4:25 pm	1:45 pm
4:50 pm	4:50 pm	3:38 pm	1172	5334	4:10 am	8:25 pm	4:50 pm	1:25 pm
5:30 am	5:30 am	4:38 pm	1179	5576	3:35 am	7:50 pm	5:30 am	1:05 pm
8:34 am	8:34 am	5:38 pm	1251	1155	3:10 am	7:25 pm	8:34 am	12:45 pm
11:40 am	11:40 am	8:38 pm	1023	3968	2:45 am	6:50 pm	11:40 am	12:20 pm
1:05 pm	1:05 pm	9:38 pm	1105	3142	2:20 am	6:25 pm	1:05 pm	12:00 pm
2:10 pm	2:10 pm	10:38 pm	1160	2482	1:55 am	6:00 pm	2:10 pm	11:35 pm
1:37 pm	1:37 pm	11:38 pm	1179	530	1:30 am	5:30 pm	1:37 pm	11:15 pm
2:31 pm	2:31 pm	12:38 pm	1169	2367	12:55 am	5:05 pm	2:31 pm	10:50 pm
2:40 pm	2:40 pm	1:38 pm	1202	2153	12:30 am	4:35 pm	2:40 pm	10:25 pm
3:02 pm	3:02 pm	2:38 pm	1204	2147	12:05 am	4:10 pm	3:02 pm	10:00 pm
3:45 pm	3:45 pm	3:38 pm	1219	2114	11:40 am	3:45 pm	3:45 pm	9:40 pm
4:50 pm	4:50 pm	4:38 pm	1242	2108	11:15 am	3:20 pm	4:50 pm	9:15 pm
2:55 pm	2:55 pm	5:38 pm	1242	2108	10:50 am	3:00 pm	2:55 pm	8:50 pm
4:50 pm	4:50 pm	6:38 pm	1290	3436	10:25 am	2:30 pm	4:50 pm	8:25 pm
6:55 pm	6:55 pm	7:38 pm	1341	2786	10:00 am	2:05 pm	6:55 pm	8:00 pm
10:05 pm	10:05 pm	8:38 pm	1416	1070	9:35 am	1:40 pm	10:05 pm	7:45 pm
7:15 am	7:15 am	9:38 pm	1461	907	9:10 am	1:15 pm	7:15 am	7:25 pm
7:30 am	7:30 am	10:38 pm	1676	1865	8:45 am	12:50 pm	7:30 am	7:00 am
7:30 pm	7:30 pm	11:38 pm	1676	1865	8:20 am	12:25 pm	7:30 pm	6:45 pm
9:10 pm	9:10 pm	12:38 pm	2015	47	8:00 am	12:00 pm	9:10 pm	6:20 pm
7:20 am	7:20 am	1:38 pm	1676	1865	7:45 am	11:35 pm	7:20 am	6:00 pm
9:15 pm	9:15 pm	2:38 pm	2076	24	7:20 am	11:10 pm	9:15 pm	5:45 pm
9:15 pm	9:15 pm	3:38 pm	2072	47	7:00 am	10:45 pm	9:15 pm	5:20 pm
4:10 am	4:10 am	4:38 pm	1556	106	6:45 am	10:20 pm	4:10 am	5:05 pm
7:15 am	7:15 am	5:38 pm	1640	29	6:20 am	9:55 pm	7:15 am	4:50 pm
4:00 pm	4:00 pm	6:38 pm	1640	29	6:00 am	9:30 pm	4:00 pm	4:35 pm
9:15 pm	9:15 pm	7:38 pm	1780	26	5:45 am	9:05 pm	9:15 pm	4:20 pm
10:40 pm	10:40 pm	8:38 pm	1819	10	5:20 am	8:40 pm	10:40 pm	4:05 pm
10:00 am	10:00 am	9:38 pm	1640	26	5:05 am	8:15 pm	10:00 am	3:50 pm
3:10 pm	3:10 pm	10:38 pm	1783	26	4:50 am	7:50 pm	3:10 pm	3:35 pm
4:40 pm	4:40 pm	11:38 pm	1825	10	4:35 am	7:25 pm	4:40 pm	3:20 pm
8:05 am	8:05 am	12:38 pm	1640	29	4:20 am	7:00 pm	8:05 am	3:05 pm
1:20 pm	1:20 pm	1:38 pm	1753	26	4:05 am	6:45 pm	1:20 pm	2:50 pm
2:45 pm	2:45 pm	2:38 pm	1825	10	3:50 am	6:20 pm	2:45 pm	2:35 pm

f Stops on signal. † Stub train from Malta. c Stops on flag to receive passengers for points west of Grand Junction. s Stops on flag to let off passengers holding tickets with destinations as above and received from connections at Provo, Salt Lake City and Ogden. t Stops on flag to let off passengers from points west of Grand Junction.

CONDENSED THROUGH SCHEDULE
 BY WAY OF
DENVER & RIO GRANDE WESTERN R. R. and SOUTHERN PACIFIC CO.
 BETWEEN
Denver, Colorado Springs and Pueblo
 AND
Sacramento, Oakland and San Francisco

WESTBOUND			ALL TRAINS DAILY			EASTBOUND		
READ DOWN			STATIONS			READ UP		
3-19 Salt Lake Express	1-1 Salt Lake Limited	Miles	Elevation	2-2 Scenic Limited	10-4 Denver and Eastern Express	3-19 Salt Lake Express	1-1 Salt Lake Limited	Miles
4:00 pm	8:15 am	0	5280	8:30 pm	12:45 pm	4:00 pm	8:15 am	0
6:00 pm	10:14 am	52	7237	6:55 pm	11:10 am	6:00 pm	10:14 am	52
6:50 pm	11:00 am	75	4668	5:55 pm	10:10 am	6:50 pm	11:00 am	75
8:25 pm	12:30 pm	119	5199	4:20 pm	8:35 am	8:25 pm	12:30 pm	119
9:30 pm	1:37 pm	152	5344	3:12 pm	7:25 am	9:30 pm	1:37 pm	152
9:55 pm	1:58 pm	160	5344	2:55 pm	7:10 am	9:55 pm	1:58 pm	160
12:25 am	4:30 pm	215	7050	12:45 pm	5:00 am	12:25 am	4:30 pm	215
c 1:20 am	5:27 pm	240	7968	11:58 am	4:04 am	c 1:20 am	5:27 pm	240
3:02 am	6:20 pm	276	10200	11:25 am	3:30 am	3:02 am	6:20 pm	276
3:42 am	7:25 pm	281	10240	10:30 am	2:30 am	3:42 am	7:25 pm	281
4:20 am	8:04 pm	294	8608	9:50 am	1:50 am	4:20 am	8:04 pm	294
6:50 am	10:47 pm	300	8758	9:25 am	1:20 pm	6:50 am	10:47 pm	300
7:17 am	11:43 pm	373	5562	8:50 am	12:50 pm	7:17 am	11:43 pm	373
7:48 am	12:43 pm	386	5310	8:23 am	12:14 pm	7:48 am	12:43 pm	386
8:23 am	1:43 pm	404	5104	7:48 am	11:43 pm	8:23 am	1:43 pm	404
9:23 am	2:43 pm	437	4739	6:50 am	10:47 pm	9:23 am	2:43 pm	437
10:00 am	3:43 pm	450	4583	6:17 am	9:50 pm	10:00 am	3:43 pm	450
10:15 am	4:43 pm	450	4583	5:46 am	9:19 pm	10:15 am	4:43 pm	450
10:33 am	5:43 pm	461	4510	5:10 am	8:48 pm	10:33 am	5:43 pm	461
10:51 am	6:43 pm	469	4540	4:35 am	8:24 pm	10:51 am	6:43 pm	469
12:53 pm	7:43 pm	528	5100	4:00 am	7:49 pm	12:53 pm	7:43 pm	528
1:40 pm	8:43 pm	555	4080	3:25 pm	6:24 pm	1:40 pm	8:43 pm	555
4:05 pm	9:38 pm	619	5546	2:55 pm	5:55 pm	4:05 pm	9:38 pm	619
4:30 pm	10:38 pm	627	6349	2:25 pm	5:25 pm	4:30 pm	10:38 pm	627
4:50 pm	11:38 pm	630	6120	1:50 pm	5:00 pm	4:50 pm	11:38 pm	630
5:35 pm	12:38 pm	645	7170	1:25 pm	4:35 pm	5:35 pm	12:38 pm	645
5:55 pm	1:38 pm	652	7440	11:50 am	4:05 pm	5:55 pm	1:38 pm	652
7:30 pm	2:38 pm	681	5033	11:15 am	3:30 pm	7:30 pm	2:38 pm	681
8:15 pm	3:38 pm	696	4555	10:40 am	3:00 pm	8:15 pm	3:38 pm	696
9:40 pm	4:38 pm	701	4517	10:05 am	2:25 pm	9:40 pm	4:38 pm	701
9:55 pm	5:38 pm	745	4224	9:40 am	1:50 pm	9:55 pm	5:38 pm	745
11:05 pm	6:38 pm	745	4224	9:15 am	1:25 pm	11:05 pm	6:38 pm	745
11:50 pm	7:38 pm	782	4293	8:40 am	1:00 pm	11:50 pm	7:38 pm	782
1:15 am	8:38 pm	831	4445	8:05 am	12:25 pm	1:15 am	8:38 pm	831
2:55 am	9:38 pm	893	4739	7:30 am	11:50 pm	2:55 am	9:38 pm	893
5:05 am	10:38 pm	941	4461	6:55 am	11:20 pm	5:05 am	10:38 pm	941
6:45 am	11:38 pm	941	4461	6:20 am	10:50 pm	6:45 am	11:38 pm	941
7:10 am	12:38 pm	918	446					

DENVER & RIO GRANDE WESTERN - WESTERN PACIFIC

CONDENSED SCHEDULE BY WAY OF UNION PACIFIC—NORTH WESTERN LINE BETWEEN DENVER, OMAHA and Chicago

16-22	12	STATIONS	19-13	3-15
*11:30 pm	*3:30 pm	Ar DENVER	*3:00 pm	*7:30 am
5:20 am	9:30 am	Ar Julesburg	8:35 am	2:10 am
12:45 pm	3:30 pm	Ar Grand Island	4:05 am	8:40 pm
5:15 pm	6:50 pm	Ar OMAHA	12:25 am	4:25 pm
6:25 pm	7:42 am	Ar Council Bluffs	11:37 pm	2:56 pm
7:25 am	8:55 pm	Ar CHICAGO	10:30 am	12:15 am

CONDENSED SCHEDULE BY WAY OF UNION PACIFIC—CHICAGO, MILWAUKEE & ST. PAUL RY. BETWEEN DENVER, OMAHA and Chicago

16-8	12-4	STATIONS	19-15	3-15
*11:30 pm	*3:30 pm	Ar DENVER	*3:00 pm	*7:30 am
5:20 am	9:30 am	Ar Julesburg	8:35 am	2:10 am
12:45 pm	3:30 pm	Ar Grand Island	4:05 am	8:40 pm
5:15 pm	6:50 pm	Ar OMAHA	12:25 am	4:25 pm
6:05 pm	7:40 am	Ar CHICAGO	10:30 am	12:15 am

CONDENSED SCHEDULE BY WAY OF SANTA FE LINES BETWEEN DENVER, COLORADO SPRINGS, PUEBLO, KANSAS CITY and Chicago

13-2	6	23-10	12-22	STATIONS	5	1-24	9-64	11
*9:45 pm	*7:40 pm	*3:00 pm	*8:45 am	Ar DENVER	*10:00 am	*12:10 pm	*9:15 pm	*5:30 pm
12:35 am	10:15 pm	6:00 pm	11:30 am	Ar COLORADO SPRINGS	7:00 am	9:25 am	6:20 pm	2:50 pm
2:15 am	11:40 pm	7:40 pm	1:10 pm	Ar PUEBLO	8:20 am	7:40 am	4:40 pm	1:10 pm
6:50 pm	4:50 pm	2:55 pm	5:45 am	Ar Topeka	11:10 am	1:30 pm	12:10 am	
	5:43 pm	3:48 pm	6:32 am	Ar Lawrence	10:23 am	12:15 pm	11:24 am	
8:55 pm	6:50 pm	5:00 pm	7:45 am	Ar KANSAS CITY	9:10 am	11:10 am	10:20 pm	8:45 pm
9:30 am	8:50 am	7:25 am	9:20 am	Ar CHICAGO	6:00 pm	10:30 pm	10:25 am	

CONDENSED SCHEDULE BY WAY OF UNION PACIFIC RAILROAD BETWEEN DENVER and Kansas City

104	102	STATIONS	103	119
*9:00 pm	*12:50 pm	Ar DENVER	*7:15 am	*12:50 pm
11:05 am	3:05 am	Ar Sallina	5:05 pm	12:05 am
2:42 pm	7:16 am	Ar Topeka	12:40 pm	8:10 pm
3:26 pm	8:03 am	Ar Lawrence	11:52 am	7:20 pm
4:40 pm	9:15 am	Ar KANSAS CITY	10:40 am	6:15 pm

CONDENSED SCHEDULE BY WAY OF WABASH RAILWAY BETWEEN KANSAS CITY, OMAHA, ST. LOUIS and Chicago, Detroit, Buffalo

18-8	4	12-10	2-12	STATIONS	1-11-5	3-13	9	17
*10:50 pm	*1:00 pm	*10:00 am	*7:30 am	Ar KANSAS CITY	*7:30 am	*5:30 pm	*9:30 pm	
2:56 am	5:20 pm	1:40 pm	4:43 pm	Ar Moberly	3:10 am	1:43 pm	6:02 pm	
7:00 am	10:50 pm	6:02 pm	10:30 pm	Ar ST. LOUIS	10:30 pm	9:03 am	2:02 pm	
*11:52 pm	*8:15 am	*6:30 pm	*9:21 am	Ar ST. LOUIS	*10:25 pm	*7:15 am	*1:30 pm	
2:50 am	11:15 am	9:21 am	7:35 pm	Ar Decatur	7:35 pm	3:55 am	9:50 am	
1:45 pm	11:00 pm	7:15 am	Ar DETROIT	7:45 am	6:00 pm	10:30 pm		
2:05 am		5:10 pm	Ar BUFFALO	12:50 am	7:45 am			
*11:52 pm	*12:20 pm	*9:30 pm	*6:14 pm	Ar ST. LOUIS	*7:03 am		*7:41 am	
2:50 am	3:15 pm	1:05 am	Ar Decatur	2:45 pm	3:05 am		4:30 am	
7:50 am	7:59 pm	6:50 am	Ar CHICAGO	10:05 am	9:30 pm		11:45 pm	
*7:15 am	*5:55 pm	*5:55 pm	*8:25 am	Ar OMAHA	*8:25 am	*11:48 am		
6:20 pm	3:20 pm	Ar Moberly	11:25 pm	1:23 pm				
10:50 pm	7:55 am	Ar ST. LOUIS	7:00 pm	9:03 am				

CONDENSED SCHEDULE BY WAY OF CHICAGO & ALTON RAILROAD BETWEEN KANSAS CITY, ST. LOUIS and Chicago

8-26	6	4	22-10-2	STATIONS	3-9-21	1-11-15	5	7
*11:55 pm			*12:15 pm	Ar KANSAS CITY	*5:28 pm	*7:55 am		
7:55 am			4:56 pm	Ar Mexico	12:35 pm			
			8:25 pm	Ar ST. LOUIS	9:03 am	11:55 pm		
			*5:55 pm	Ar KANSAS CITY	*7:45 am	*9:15 pm		
			7:25 am	Ar Joliet	2:09 am			
*11:59 pm	*9:00 pm	*8:45 am	*12:15 pm	Ar ST. LOUIS	*8:00 pm	*6:00 pm	*7:01 am	*7:43 am
12:15 am	11:25 am	11:25 am	2:50 pm	Ar Springfield	4:50 pm	3:05 pm	3:20 am	
7:45 am	7:00 am	4:30 pm	7:50 pm	Ar CHICAGO	12:15 pm	10:15 am	9:00 pm	11:59 pm

CONDENSED SCHEDULE BY WAY OF CHICAGO & EASTERN ILLINOIS RAILROAD BETWEEN ST. LOUIS and Chicago

24	26	22	STATIONS	21	25	23
*11:57 pm	*9:35 pm	*8:55 am	Ar ST. LOUIS	*5:40 pm	*6:57 am	*7:25 am
12:15 am	1:25 am	12:45 pm	Ar Villa Grove	1:45 pm	2:18 am	
7:40 am	6:55 am	4:35 pm	Ar CHICAGO	10:00 am	8:55 pm	11:55 pm

CONDENSED SCHEDULE BY WAY OF MISSOURI PACIFIC RAILROAD BETWEEN OMAHA and St. Louis

106-16	108-14	104-14	STATIONS	13-103	13-107	15-105
*11:30 pm	*1:55 pm	*7:50 am	Ar OMAHA	*4:07 pm	*8:20 pm	*7:15 am
7:05 am	8:10 pm	3:30 pm	Ar KANSAS CITY	8:30 am	1:55 pm	11:20 pm
6:20 pm	6:55 am	6:55 am	Ar ST. LOUIS	10:10 pm	10:10 pm	2:02 pm

CONDENSED SCHEDULE BY WAY OF BURLINGTON ROUTE BETWEEN OMAHA and St. Louis

22	26	20-16	22-14	STATIONS	21-23	17-21	17-27	25
*10:00 am	*4:30 pm	*9:05 am	*11:10 pm	Ar OMAHA	*6:45 am	*6:05 pm	*11:50 am	
6:10 pm	7:55 am	7:19 am	6:50 pm	Ar ST. LOUIS	9:03 am	9:01 pm	9:01 pm	*8:05 am

CONDENSED SCHEDULE BY WAY OF ILLINOIS CENTRAL RAILROAD BETWEEN ST. LOUIS, OMAHA and Chicago

20-16	18-12	STATIONS	11-19	17	5
*9:00 am	*11:30 pm	Ar ST. LOUIS	*5:43 pm	*7:23 am	*12:40 pm
11:45 am	1:40 pm	Ar Springfield	3:00 pm	8:35 am	
4:45 pm	7:25 am	Ar CHICAGO	10:00 am	11:30 pm	1:00 am
*7:15 am	*5:26 pm	Ar OMAHA	*8:35 am		
4:45 pm	3:18 am	Ar Dubuque	10:55 pm		
9:55 pm	8:30 am	Ar CHICAGO	6:00 pm		

CONDENSED SCHEDULE BY WAY OF CHICAGO, MILWAUKEE & ST. PAUL RAILWAY BETWEEN KANSAS CITY and Chicago

26	8	STATIONS	25	3
*6:00 pm	*8:15 am	Ar KANSAS CITY	*8:30 am	*7:05 pm
12:15 am	4:00 pm	Ar Ottumwa	1:50 pm	11:01 am
3:20 am	8:05 pm	Ar Davenport	11:15 pm	6:50 am
3:39 am		Ar Rock Island	10:50 pm	
8:30 am		Ar CHICAGO	6:00 pm	

CONDENSED SCHEDULE BY WAY OF CHICAGO GREAT WESTERN RAILROAD BETWEEN KANSAS CITY, OMAHA and Chicago, St. Paul, Minneapolis

54	4-7	2-1	STATIONS	8-3	2-1	5
*12:05 pm	*11:30 pm	*2:40 pm	Ar KANSAS CITY	*7:55 am	*1:30 pm	
5:18 pm	5:05 pm	5:05 pm	Ar St. Joseph	5:18 am	11:05 am	*4:35 pm
	7:00 am	9:40 pm	Ar DES MOINES	11:50 pm	6:15 am	11:00 am
	4:40 pm	7:30 am	Ar ST. PAUL	3:00 pm	8:10 pm	
	5:15 pm	8:10 am	Ar MINNEAPOLIS	2:30 pm	7:40 pm	
7:50 am	8:05 pm	8:50 am	Ar CHICAGO	8:00 am	6:30 pm	10:45 pm
12-1	6	16-17	Ar OMAHA	*7:45 am	*3:58 pm	*9:10 pm
*8:00 pm	*3:25 pm	*7:35 pm	Ar ST. PAUL	7:25 pm		8:35 am
7:30 am	8:10 pm	8:10 pm	Ar MINNEAPOLIS	6:50 pm		8:00 am
8:10 am			Ar CHICAGO			10:45 pm

CONDENSED SCHEDULE BY WAY OF ROCK ISLAND LINES BETWEEN KANSAS CITY, ST. PAUL and Minneapolis

70-71	58-59	STATIONS	56-57	68-69
*3:00 pm	*11:30 pm	Ar KANSAS CITY	*7:35 am	*3:25 pm
10:01 pm	7:00 am	Ar Des Moines	12:05 am	8:15 am
7:05 am	3:30 pm	Ar ST. PAUL	3:55 pm	11:00 pm
8:05 am	4:20 pm	Ar MINNEAPOLIS	3:15 pm	10:20 pm

CONDENSED SCHEDULE BY WAY OF MISSOURI PACIFIC R. R.—NORTH WESTERN LINE BETWEEN KANSAS CITY, OMAHA, ST. PAUL and Minneapolis

107	103	105	STATIONS	106	104	108
*1:55 pm	*8:30 am	*11:20 pm	Ar KANSAS CITY	*7:05 am	*3:30 pm	*8:10 pm
8:20 pm	4:07 pm	7:15 am	Ar OMAHA	11:30 pm	7:50 am	1:55 pm
9:05 pm	7:45 pm	8:00 pm	Ar OMAHA	10:45 am	7:15 am	12:35 pm
12:25 pm	10:40 pm	11:15 am	Ar Sioux City	7:25 pm	4:15 am	8:50 am
9:15 am	7:30 am	8:40 pm	Ar ST. PAUL	10:10 am	6:55 pm	10:30 pm
10:00 am	8:15 am	9:25 pm	Ar MINNEAPOLIS	9:25 am	6:15 pm	9:40 pm

CONDENSED SCHEDULE BY WAY OF FRISCO LINES BETWEEN KANSAS CITY, Memphis and Birmingham

103	105	101	STATIONS	104	106	102
*11:40 pm	*6:00 pm	*8:20 pm	Ar KANSAS CITY	*7:15 am	*9:30 am	*5:10 pm
3:05 am	8:15 pm	11:50 am	Ar Fort Scott	3:40 am	6:50 am	1:40 pm
7:00 am	11:43 pm	4:30 pm	Ar Springfield	11:05 pm	4:00 am	8:55 am
7:10 pm	7:45 am	8:55 am	Ar Memphis	9:15 am	7:50 pm	6:05 pm
5:35 am	3:30 pm		Ar BIRMINGHAM	11:15 pm	12:30 pm	

DENVER & RIO GRANDE WESTERN - WESTERN PACIFIC

STEAMSHIP CONNECTIONS

LOS ANGELES STEAMSHIP CO.

Fast and Palatial Steamships "Yale" and "Harvard" Between LOS ANGELES, SAN FRANCISCO and SAN DIEGO
 Four Sailings Weekly each way between Los Angeles and San Francisco
 Two Sailings Weekly to and from San Diego
 HONOLULU—DIRECT FROM LOS ANGELES via the Great Circle Route of Sunshine
 S. S. Calawaii sails February 16, March 8 and 29, April 19 and May 10.

For reservations or information, ask any Rio Grande or Western Pacific agent, or R. F. Cullen, G. P. A. R. V. Crowder, P. T. M. 517 S. Spring St., Los Angeles, Cal. 685 Market St., San Francisco, Cal.

MATSON NAVIGATION COMPANY

Sailings every Wednesday noon from SAN FRANCISCO to HAWAIIAN PORTS
 "MAUI" "MATSONIA" "WILHELMINA" "MANOA"
 General Offices, 215 Market Street, San Francisco, Calif.

OCEANIC STEAMSHIP COMPANY

SYDNEY SHORT LINE
 Monthly Sailings
 19 days San Francisco to Australia; quickest and most attractive route between San Francisco, Hawaii, Samoa and Australia
 L. F. COCKROFT, G. P. A. - 2 Pine St., San Francisco, Cal.

PACIFIC MAIL STEAMSHIP COMPANY

75 Years of Successful Service
 San Francisco to the Orient
 The Pioneer Trans-Pacific Line "The Sunshine Belt"

Fastest Ships Between San Francisco and Yokohama, Kobe, Shanghai, Hongkong and Manila
 VIA HONOLULU

Early Sailings from San Francisco
 S. S. President Wilson sails February 21 S. S. President Lincoln sails March 6
 S. S. President Cleveland sails April 3 S. S. President Pierce sails April 17
 And every 14 days thereafter
 Also sailings to other points, such as to the PANAMA CANAL, vessels stopping at Mexico, Central America en route.
 Sailings Every Two Weeks

For complete information apply to
 PACIFIC MAIL STEAMSHIP COMPANY
 W. A. YOUNG, JR., General Passenger Agent
 508 California St., San Francisco, Cal.

503 South Spring Street Los Angeles, Cal. 10 Hanover Square New York
 Or any Ticket Agent of the Rio Grande or Western Pacific

TOYO-KISEN-KAISHA

(ORIENTAL STEAMSHIP CO.)
 Fast and Frequent Sailings—Largest and Finest Steamers
 SAN FRANCISCO—JAPAN—HONGKONG VIA HONOLULU
 Tenyo Maru sails February 15 Shinyo Maru sails March 13
 Korea Maru sails February 26 Siberia Maru sails March 27
 Taiyo Maru sails April 10

For information regarding rates of passage or freight, address
 165 Broadway, 551 Market St., 375 Pacific Electric Bldg.,
 New York City, N. Y. San Francisco, Cal. Los Angeles, Cal.

UNION STEAMSHIP CO. OF NEW ZEALAND, LTD.

To Sydney, Aust., via Tahiti (Papeete), Rarotonga, Cook Islands, and Wellington, N. Z.
 Connections to the Islands of the Pacific, Tonga, Samoa, Fiji, Java, Manila, China and Japan, and Honolulu
 Sailings from San Francisco every 28 days

HIND, ROLPH & CO., Inc., Gen. Agts., 230 California St., San Francisco, Cal.

WHAT IS THE VALUE OF THE RAILROADS?

400,000* Miles of Track at only \$25,000 a Mile = \$10,000,000,000

The Department of Agriculture estimates that the average cost of a mile of improved highway today—which has no rails, ties, tunnels, trestles, and relatively infrequent bridges—is about \$36,000.

69,000* Locomotives at only \$20,000 Each = 1,380,000,000

The 6,000 or more locomotives bought in the last two years have cost an average of about \$60,000 each, and some have cost as much as \$75,000 or \$100,000.

2,400,000* Freight Cars at only \$1,000 Each = 2,400,000,000

The average cost of a freight car today is about \$2,500. Many recently put in service cost \$3,000 and refrigerator cars \$3,500 each.

57,000* Passenger-Train Cars at only \$10,000 Each = 570,000,000

All steel passenger-train cars now cost from \$30,000 to \$35,000 each.

Materials and Supplies = 500,000,000

Railroads have to keep on hand millions of tons of coal, rails, ties, spikes, and all other material required in maintenance and operation.

DENVER & RIO GRANDE WESTERN - WESTERN PACIFIC

STAGE LINE FARES AND ARRANGEMENTS.

Subject to Change Without Notice.

CALIFORNIA			FARES			Free Baggage Allowance		
TO	FROM	TIME	Miles	One Way	Round Trip	One Way	Round Trip	Allowance
Bangor	Marysville	Daily 5.30 am	20	\$2.00	\$4.00	60	60	pounds
Brady	Marysville	Daily ex. Sun. 5.30 am	11	1.50	3.00	60	60	pounds
Crickson	Minden, Nev. (4)	Daily 11.45 am	31	9.00	18.00	60	60	pounds
Brownville	Marysville	Daily 5.30 am	36	3.00	6.00	60	60	pounds
Browns Valley	Marysville	Daily ex. Sun. 5.30 am	12	1.00	2.00	60	60	pounds
Bullard's Bar	Marysville	Daily 5.30 am	41	4.00	8.00	60	60	pounds
Butte Valley	Crescent Mills (6)	Special 9.30 am	31	5.00	10.00	50	50	pounds
Byron	Stockton	Daily 11.15 am	25	1.00	2.00	60	60	pounds
Campionville	Marysville	Daily ex. Sun. 5.30 am	44	4.00	8.00	60	60	pounds
Challenge	Marysville	Daily ex. Sun. 5.30 am	35	3.50	7.00	60	60	pounds
Chester	Crescent Mills (6)	Special arrangements	31	3.50	7.00	60	60	pounds
Clarksburg	Sacramento	Daily ex. Sun. frequent	14	.54	1.08	Hand baggage		
Clements	Stockton	Daily 1.30 pm	22	.85	None	50	50	pounds
Clippers Mills	Marysville	Daily 5.30 am	45	4.50	9.00	60	60	pounds
Coteville	Minden, Nev. (4)	Daily 5.30 am	38	5.50	11.00	25	25	pounds
Concow	Oroville	Daily 5.30 am	25	3.00	6.00	75	75	pounds
Courtland	Franklin	Daily every hour, 9.00 am to 6.00 pm	8	.50	1.00	50	50	pounds
Courtland	Sacramento	Daily, frequent	22	.81	1.62	Hand baggage		
Dupertino	San Jose	Daily, frequent	11	.25	.50	Hand baggage		
Dobbin	Marysville	Daily ex. Sun. 5.30 am	35	3.00	6.00	60	60	pounds
Downieville	Marysville	Daily ex. Sun. 5.30 am	65	7.50	14.00	60	60	pounds
Downieville	Blairsden	Daily (Summer) 8.30 am	33	5.50	10.00	Hand baggage		
Downieville	Chico	Daily ex. Sun. 11.00 am	64	8.00	16.00	100	100	pounds
Downieville	Loyalton	Daily ex. Sun. 2.30 pm	49	6.50	13.00	50	50	pounds
Eagleview	Gerlach	Tues., Fri. (Summer) 7.00 am	71	4.50	9.00	Hand baggage		
Empire Ranch	Marysville	Daily ex. Sun. 5.30 am	19	1.50	3.00	40	40	pounds
Enterprise	Oroville	Mon., Wed., Fri. 6.00 am	16	1.50	3.00	60	60	pounds
Feeney	Marysville	Daily ex. Sun. 5.30 am	52	6.25	12.50	60	60	pounds
Folsom	Sacramento	Daily, frequent	22	.81	1.62	50	50	pounds
Forbestown	Oroville	Daily ex. Sun. 5.00 am	22	2.50	4.00	75	75	pounds
Fort Bidwell	Gerlach	Tue., Fri. 7.00 am	71	7.00	14.00	Hand baggage		
Genesee	Yreka	Daily 9.45 am	9	1.25	2.50	Hand baggage		
Gold Lake	Blairsden	Daily ex. Sun. (Sum.) 8.45 am	9	1.75	3.00	50	50	pounds
Grass Valley	Marysville	Daily 8.00 am	36	3.00	6.00	60	60	pounds
Gt. W. Power								
Co. Dam	Crescent Mills (6)	Daily 9.00 am	22	2.00	4.00	50	50	pounds
Greenview	Crescent Mills (6)	Daily 9.00 am	6	.60	1.00	50	50	pounds
Hannerton	Marysville	Daily ex. Sun. 5.30 am	12	1.00	2.00	60	60	pounds
Hickersons	Marysville	Daily ex. Sun. 5.30 am	10	1.00	2.00	60	60	pounds
Hood	Franklin	Daily every hour, 9.00 am to 6.00 pm	4	.25	.50	50	50	pounds
Howland Flat	Marysville	Daily ex. Sun. (Sum.) 5.30 am	77	8.50	17.00	60	60	pounds
Ileton	Sacramento	Daily ex. Sun. frequent	43	1.62	3.24	Hand baggage		
Johnstonville	Blairsden	Daily (Summer) 8.40 am	40	3.00	6.00	50	50	pounds
Johnsonville	Blairsden	Daily (Summer) 8.40 am	40	3.00	6.00	50	50	pounds
La Grange	Modesto (6)	Daily ex. Sun. 9.30 am	32	1.89	3.78	50	50	pounds
Lake Center	Blairsden	Daily ex. Sun. 8.45 am	9	1.50	3.00	50	50	pounds
Lake City	Gerlach	Tue., Fri. 7.00 am	2	.75	1.50	Hand baggage		
Lanckers	Marysville	Daily ex. Sun. 5.30 am	2	2.50	5.00	60	60	pounds
Lanes Ranch	Marysville	Daily ex. Sun. 5.30 am	10	1.00	2.00	60	60	pounds
La Porte	Oroville	Daily ex. Sun. 5.00 am	56	5.00	10.00	75	75	pounds
La Porte	Marysville	Daily ex. Sun. 5.30 am	65	7.00	13.00	60	60	pounds
La Porte	Quincy (7)	Tues., Thur., Sat. (Sum.) 6 am	35	4.00	8.00	50	50	pounds
Lassen	Yreka	Daily 11.00 am	30	3.00	6.00	50	50	pounds
Lockett	Stockton	Daily ex. Sun. 1.00 am	14	1.50	3.00	60	60	pounds
Loyalton	Chico	Daily ex. Sun. 1.00 am	14	1.50	3.00	60	60	pounds
Lumpkin	Oroville	Mon., Wed., Fri. 6.00 am	32	3.00	6.00	75	75	pounds
Manteca	Stockton	Daily hourly, 7 am to 6 pm	13	.45	.75	60	60	pounds
Masonie	Minden, Nev. (4)	Tues., Thurs. 11.45 am	68	8.50	17.00	25	25	pounds
Mather Field	Sacramento	Daily, frequent	14	.54	1.08	Hand baggage		
Mc Cormick								
Camp	Blairsden	Daily ex. Sun. 8.45 am	10	1.75	3.50	50	50	pounds
McGee's Camp	Blairsden	Daily ex. Sun. 8.45 am	11	2.00	4.00	50	50	pounds
Meadow Valley	Quincy (7)	Daily ex. Sun. 9.00 am	8	1.00	2.00	50	50	pounds
Merrimac	Oroville	Mon., Wed., Fri. 6.00 am	34	3.50	7.00	40	40	pounds
Michigan Bar	Sacramento	Daily 8 am, 2 pm, 3 pm	25	1.50	3.00	Hand baggage		
Milford	Blairsden	Daily ex. Sun. 8.40 am	20	2.00	4.00	50	50	pounds
Mohawk	Blairsden	Daily (Summer) 8.40 am	14	1.50	3.00	50	50	pounds
Mono Lake	Minden, Nev. (4)	Daily ex. Sun. 11.45 am	107	15.00	30.00	25	25	pounds
Mooretown	Oroville	Mon., Wed., Fri. 6.00 am	22	2.50	5.00	40	40	pounds
Mt. Hamilton	San Jose	Daily ex. Sun. 9.00 am	28	2.00	4.00	Suitcase		
Mt. Hamilton	San Jose	Sat. only 4.30 pm	28	2.50	5.00	Suitcase		
Nevada City	Marysville	Daily ex. Sun. 5.30 am	40	3.00	6.00	60	60	pounds
New Almaden	San Jose	Daily ex. Sun. 8.00 am	10	.75	1.50	Hand baggage		
North Star	Marysville	Daily 5.30 am	54	6.00	12.00	60	60	pounds
Old Mohawk	Blairsden	Daily (Summer) 8.45 am	18	.25	.50	50	50	pounds
Orangevale	Sacramento	Daily 8 am, 11.30 am, 3.30 pm	18	2.50	5.00	60	60	pounds
Oregon House	Oroville	Daily 5.30 am	27	2.50	5.00	60	60	pounds
Pontz	Oroville	Daily 5.30 am	15	1.50	3.00	25	25	pounds
Plymouth	Sacramento	Daily, frequent	42	2.00	4.00	50	50	pounds
Prattville	Crescent Mills (6)	Daily (Summer) 9.00 am	21	2.50	5.00	50	50	pounds
Placerville	Sacramento	Daily 8 am, 10.45 am, 3 pm	50	2.16	4.32	60	60	pounds
Rackeby	Marysville	Daily 5.30 am	25	2.50	5.00	60	60	pounds
Richardson								
Springs	Chico	Daily 2.15 pm	1.50	3.00	Hand baggage			
Rio Vista	Sacramento	Daily ex. Sun. frequent	50	2.16	4.32	Hand baggage		
Ripon	Stockton	Daily hourly, 7 am to 6 pm	21	.60	1.00	60	60	pounds
Rough & Ready	Marysville	Daily ex. Sun. 8.00 am	30	2.50	5.00	60	60	pounds
Rumsey	Woodland	Daily 11.15 am, 3.15 pm	36	1.85	3.70	Hand baggage		
Ryde	Sacramento	Daily ex. Sun. frequent	38	1.55	2.70	Hand baggage		
Salmon Lake								
(McGee's Camp)	Blairsden	Daily 8.40 am	12	2.00	4.00	50	50	pounds
Sardine	Blairsden	Daily (Summer) 8.45 am	12	3.00	6.00	50	50	pounds
Sattley	Chico	Daily ex. Sun. 11.00 am	32	3.50	7.00	100	100	pounds
Sattley	Loyalton	Daily 1.00 pm	18	2.00	4.00	50	50	pounds
Sierra City	Blairsden	Daily on arrival W. P. No. 2	40	4.00	7.50	50	50	pounds
Sierra City	Chico	Daily 1.00 pm	36	6.00	12.00	50	50	pounds
Sierra City	Chico	Daily ex. Sun. 11.00 am	40	6.00	12.00	50	50	pounds
Sierraville	Chico	Daily ex. Sun. 11.00 am	28	3.00	6.00	100	100	pounds
Sierraville	Loyalton	Daily 2.30 pm	14	1.50	3.00	50	50	pounds

STAGE LINE FARES AND ARRANGEMENTS.

Subject to Change Without Notice.

CALIFORNIA—Continued			FARES			Free Baggage Allowance			
TO	FROM	TIME	Miles	One Way	Round Trip	One Way	Round Trip	Allowance	
Slough House	Sacramento	Daily 8 am, 2 pm, 3 pm	20	\$1.00	\$2.00	Hand baggage			
Smartsville	Marysville	Daily 8.00 am	20	1.50	3.00	60	60	pounds	
Sonora	Stockton	Daily 7.30 am, 10.00 am, 1.15 pm, 4.00 pm	62	3.00	5.50	60	60	pounds	
St. Louis	Marysville	Daily ex. Sun. (Sum.) 5.30 am	75	3.50	7.00	60	60	pounds	
Stanwood	Oroville	Mon., Wed., Fri. 6.00 am	35	3.00	6.00	60	60	pounds	
State Line	Gerlach	Tue., Fri. 7.00 am	41	4.00	8.00	Hand baggage			
Strawberry	Valley	Marysville	Daily ex. Sun. 5.30 am	50	5.00	10.00	60	60	pounds
Susunville	Doyle	Daily 11.30 am	45	4.00	7.00	50	50	pounds	
Susanville	Present Mills (6)	Daily (Summer) 9.00 am	112	3.75	7.50	50	50	pounds	
Tallac	Sacramento	Daily 10.45 am	11	8.64	16.20	Hand baggage			
Ten Mile House	Marysville	Daily ex. Sun. 5.30 am	10	1.00	2.00	60	60	pounds	
Timbutco	Marysville	Daily ex. Sun. 8.00 am	24	1.75	3.50	60	60	pounds	
Tolands	Marysville	Daily ex. Sun. 5.30 am	14	1.50	3.00	60	60	pounds	
Topaz	Minden, Nev. (4)	Daily ex. Sun. 11.45 am	33	5.50	11.00	25	25	pounds	
Valley Springs	Stockton	Daily 1.15 pm	32	1.50	3.00	50	50	pounds	
Vinton	Chico	Daily ex. Sun. 11.00 am	32	1.50	3.00	50	50	pounds	
Vorden	Sacramento	Daily ex. Sun. frequent	29	1.08	2.16	Hand baggage			
Walker Mine	Fortola	Daily ex. Sun. 9.00 am	25	3.25	6.50	50	50	pounds	
Walnut Grove	Franklin	Daily every hour, 9.00 am to 6.00 pm	12	.35	None	50	50	pounds	
Waterloo	Stockton	Daily 1.30 pm	7	.35	None	50	50	pounds	
Westwood	Doyle	Daily (Summer) 11.00 am	7	5.00	10.00	50	50	pounds	
Westwood	Crescent Mills (6)	Daily (Summer) 9.00 am	31	2.00	4.00	50	50	pounds	
Winters	Sacramento	Daily 9 am, 1.30 pm, 4.30 pm	27	1.08	2.16	60	60	pounds	
Woodleaf	Marysville	Daily 5.30 am	42	4.00	8.00	60	60	pounds	
Woodleaf	Oroville	Daily ex. Sun. 11.45 am	32	3.00	6.00	40	40	pounds	
Woodville	Marysville	Daily ex. Sun. 5.30 am	44	4.00	8.00	60	60	pounds	
Yankee Hill	Oroville	Daily 5.30 am	18	2.50	5.00	75	75	pounds	

COLORADO

Abbey	Pueblo	Daily ex. Sun. 1.30 pm	20	1.25	2.50	50	50	pounds
Axial	Meeker	Daily ex. Sun. 7.00 am	20	3.00	6.00	Hand baggage		
Badito	Walsenburg	Daily ex. Sun. 8.00 am	23	1.50	3.00	Hand baggage		
Bayfield	Ignacio	Daily 10.30 am, 4.00 pm	10	1.50	3.00	Hand baggage		
Beulah	Pueblo	Daily 8.00 am	28	1.50	3.00	50	50	pounds
Big Four	Walsenburg	Daily ex. Sun. 8.00 am	15	1.00	2.00	Hand baggage		
Boia Grove	Walsenburg	Daily ex. Sun. 1.00 pm	16	1.75	3.50	5		

DENVER & RIO GRANDE WESTERN - WESTERN PACIFIC

GENERAL INFORMATION

SPECIAL NOTICE. The time shown in this folder is subject to change without notice; is that at which trains may be expected to arrive at and depart from the several stations, but their arrival or departure at the time stated is not guaranteed, nor do these Companies hold themselves responsible for any delay or any consequences arising therefrom.

ADJUSTMENT OF FARES. Should any difference arise between yourself and the conductor, or train auditor, pay the fare requested, take receipt for the amount, and refer the matter to the General Passenger Office for adjustment.

PASSENGERS ARE NOT ALLOWED to stand in vestibules or on platforms of cars. It is safer to remain seated while the train is in motion.

STOP-OVERS ON RAILROAD TICKETS. Stop-overs not exceeding ten (10) days can be secured at Denver, Colorado Springs and Pueblo, Colorado, on tickets sold at points in North Dakota, South Dakota, Wyoming, Nebraska, Kansas, New Mexico, Oklahoma, Texas or points east thereof to destinations in British Columbia, California, Idaho, Montana, Nevada, Oregon, Utah and Washington, or the reverse, by depositing ticket with Depot Ticket Agent at stop-over point immediately upon arrival.

Stop-over not exceeding ten (10) days will also be allowed at Denver, Colorado, on tickets sold from and to territory other than that mentioned above provided passenger, when ready to resume journey, holds evidence that he has made side trip to Rocky Mountain National Park. Tickets to be deposited with Depot Ticket Agent at Denver, EXCEPT when passengers enter Park via Denver and leave via a different gateway, in which case passengers must present tickets to Depot Ticket Agent at Denver, who will endorse thereon date stop-over commences, and when passengers complete trip through Park, Agent at gateway from which they resume journey will attach stop-over pasteur extending limit if passengers hold evidence they have made trip through the Park, provided ticket is presented for extension within ten days from initial stop-over date endorsed on ticket by Agent at Denver.

Stop-overs not exceeding ten (10) days (effective March 15th) can be secured at Salida, Glenwood Springs and Grand Junction, Colo., and Thistle and Provo, Utah, on one-way tickets reading from or through Pueblo to destinations in California, Oregon, Washington or British Columbia, or vice-versa, by application to conductor and deposit of ticket with depot ticket agent at stop-over point.

Stop-overs not exceeding ten (10) days can be secured at Salt Lake City and Ogden, Utah, on tickets reading through those points, by depositing ticket with Depot Ticket Agent immediately upon arrival at stop-over point.

During the Mesa Verde National Park season, the Denver & Rio Grande Western will permit stop-overs not to exceed ten (10) days on tickets at Montrose and Grand Junction, Colorado, provided passenger, when ready to resume journey, holds evidence that he has made side trip to Mesa Verde National Park.

The Western Pacific will permit stop-overs of not to exceed ten (10) days on tickets at Blairdsen, California, except that stop-overs will be permitted on tickets issued at points in the State of California, reading to or from Reno, Nev., or Doyle, Calif., or points west thereof or vice-versa.

The Western Pacific will permit stop-overs of not to exceed ten (10) days at Sacramento, Oakland and San Francisco, Calif., on tickets reading through those points on application to conductor and deposit of ticket with Ticket Agent, except stop-overs will not be allowed on tickets issued at points in California destined to points in California.

In addition to the above, the Western Pacific will permit stop-overs not exceeding ten (10) days on tickets at Paxton, Calif., provided passenger when ready to resume journey presents evidence of having made side trip to Lassen Volcanic National Park. This stop-over only in effect from June 15 to September 10.

FREE SIDE-TRIP PUEBLO TO COLORADO SPRINGS OR DENVER AND RETURN. Available to holders of round-trip tickets reading via the Missouri Pacific Railroad to Pueblo, Colo., thence Denver & Rio Grande Western Railroad to Salt Lake City, Utah, or beyond, or the reverse, originating at Salina, Kansas, or points east thereof, destined to Salt Lake City, Utah, or beyond, or the reverse. Side-trip tickets may be secured upon application and presentation of original tickets to Depot Ticket Agent at Pueblo, Colo., or to D. & R. G. W. conductors running into Pueblo.

FREE SIDE-TRIP SALT LAKE CITY TO OGDEN AND RETURN. Available to holders of all classes of round-trip tickets, except homeseeker and return, or to points in Denver, Colorado Springs, Pueblo or Trinidad, Colo., reading via D. & R. G. W. and Salt Lake City, Utah, or points on or via the Western Pacific R. R. and the L. A. & S. L. R. R., or the reverse. Also available to holders of one-way tickets, permitting stop-over at side-trip point, sold from or through Denver, Colorado Springs, Pueblo or Trinidad, Colo., reading via D. & R. G. W. R. R. and Salt Lake City, Utah, to Shafter, Nev., on Western Pacific R. R., Milford, Utah, on L. A. & S. L. R. R. and beyond, or the reverse.

FREE SIDE-TRIP RENO JUNCTION, CAL., OR PORTOLA, CAL., TO RENO, NEVADA AND RETURN. Available to holders of all classes of round-trip tickets, i.e., Summer Tourist, All-Year Tourist or Special Occasion, reading via Western Pacific, sold at Winnemucca, Nevada, or any point east thereof to Marysville, Cal., and any point west thereof, or the reverse, provided such tickets permit of stopovers.

CHOICE OF ROUTES. Tickets reading via the D. & R. G. W. R. R., sold at Salida, Colo., or points east or south thereof, and destined to Grand Junction, Colo., or points west thereof, or the reverse, will be honored either via the main line through Leadville, Canon of the Colorado River and Glenwood Springs, or via the Marshall Pass and through the Black Canon of the Gunnison, except that tickets endorsed "via Gunnison" will be honored only via route specified.

Tickets reading from Salt Lake City, Utah, or points east thereof, via Western Pacific R. R. to San Francisco, Calif., thence via Southern Pacific Co. to points south of Lathrop or Tracy, Calif., or the reverse, will be honored via San Francisco or Stockton, thence Southern Pacific.

All classes of tickets, both one-way and round-trip, from points east and including Sacramento, Cal., reading via Western Pacific to San Francisco, thence Southern Pacific to San Jose, Cal., and points south thereof, will, at option of passenger, be honored via Western Pacific from Niles, Cal., to San Jose, Cal., without additional charge. This arrangement will also apply in the opposite direction. Passengers must make their own arrangements for their transfer at San Jose; also their baggage when not checked through via San Francisco.

All one-way and round-trip tickets reading via Western Pacific Railroad to Reno, Nevada, sold in any state east of, but not including Colorado, Wyoming, Montana and New Mexico, will be honored via Portola, Cal., without additional charge, on application to conductor. This arrangement will also apply on tickets in the reverse direction sold at Reno, Nevada.

All one-way and round-trip tickets reading via Western Pacific Railroad to Reno, Nevada, sold at Winnemucca, Nevada, and points east thereof (except as shown in above paragraph) will be honored in the direction they read via Portola, Cal., on payment of an additional charge of \$1.05 for each adult ticket and 55 cents for each half fare ticket. This arrangement will also apply on tickets in the reverse direction sold at Reno, Nevada.

INTERCHANGEABLE SCRIP BOOKS, bearing limit of one year from date of sale, are on sale at all of the principal ticket offices of the Denver & Rio Grande Western R. R., Rio Grande Southern R. R. and Western Pacific R. R. at fares of \$15.00, \$30.00 and \$90.00. Coupons contained in these scrip books will be honored at face value by all the larger railroads, for any number of persons, in payment of passage on trains in coaches, parlor or sleeping cars; in payment for tickets at tariff fares; also in payment for baggage charges, etc.

CHILDREN. Children under five years old are carried free when accompanied by parents or guardian; those who have reached or passed their fifth birthday and are under twelve years of age require a half ticket; those who have reached or passed their twelfth birthday require an adult ticket.

EXCESS TRAIN FARES. Passengers without tickets boarding trains of the Denver & Rio Grande Western Railroad or the Southern R. R. at stations furnishing proper facilities for the purchase thereof, will be required to pay the following amounts, in addition to the regular published tariff fares: Where the fare is 50 cents, or less, an excess of 10 cents; more than 50 cents, and not more than \$1.00, an excess of 15 cents; more than \$1.00, and not more than \$1.50, an excess of 20 cents; more than \$1.50, an excess of 25 cents.

Passengers boarding trains of the Western Pacific R. R. without tickets, at stations furnishing proper facilities for the purchase thereof, will be required to pay the following amounts, in addition to the regular published tariff fare: Where the fare is from 12 cents to \$1.49, an excess of 10 cents; from \$1.50 to \$1.99, an excess of 15 cents; from \$2.00 to \$2.49, an excess of 20 cents; from \$2.50 to \$2.99, an excess of 25 cents; from \$3.00 to \$3.49, an excess of 30 cents; from \$3.50 to \$3.99, an excess of 35 cents; from \$4.00 to \$4.49, an excess of 40 cents; from \$4.50 to \$4.99, an excess of 45 cents; from \$5.00, and over, an excess of 50 cents.

PULLMAN RESERVATIONS. Pullman reservations to points on these lines, or beyond, can be made by addressing any Agent or Passenger Representative of the Denver & Rio Grande Western or Western Pacific.

NUMBER OF RAIL TICKETS REQUIRED FOR OCCUPANCY OF DRAWING ROOM OR COMPARTMENT. Two first-class adult rail tickets or equivalent thereto will be required from individual passengers occupying drawing rooms or compartments in standard sleeping cars, either locally or in through cars via these lines.

BEFORE BOARDING TRAINS ask the ticket agent, brakeman or conductor whether the train stops at the station to which you may be ticketed. There are stations at which some trains do not stop.

STOPPING TRAINS ON SIGNAL. Where trains are scheduled to stop only on signal, passengers on trains must give advance notice to conductor, and persons intending to board trains must advise agent to that effect, in order that necessary arrangement may be perfected.

BAGGAGE REGULATIONS. One hundred and fifty pounds of baggage, consisting of personal wearing apparel, not exceeding one hundred dollars (\$100.00) in value, will be checked free on each adult's ticket, and seventy-five pounds not exceeding fifty dollars (\$50.00) in value, will be checked free on each child's ticket. Clergy-fare tickets presented in connection with Clergy Permits will be treated as full tickets.

Baggage will not be checked beyond Atlantic or Pacific Coast terminals. Baggage checked to a station having no agent must be called for at the baggage car by owner upon reaching such station and duplicate checks surrendered to train baggage man; otherwise baggage will be carried to first station beyond where there is an agent.

For any piece of baggage, any dimension of which exceeds forty-five (45) inches, there will be a charge for each inch in excess of forty-five (45) inches for each such dimension equal to the charge for five (5) pounds of excess weight, measurements to include gable or dome-shaped ends, or similar protrusions, except that no piece of baggage any dimension of which exceeds seventy-two (72) inches will be transported in regular baggage service.

Unless a greater sum is declared by the passenger and charges paid for increased valuation at time of delivery to carrier, the value of baggage belonging to or checked for an adult passenger shall be deemed and agreed to be not in excess of \$100.00, and the value of the baggage belonging to or checked for a child traveling on a half-ticket shall be deemed and agreed to be not in excess of \$50.00.

STORAGE. Storage will be charged on each piece of baggage either in or outboard, checked or not checked, remaining at a station over twenty-four hours; except that baggage received any hour Sunday will be held until same hour Monday. Baggage received any hour Sunday will be held until midnight Monday without charge, but if baggage is not claimed within such periods, then Sunday shall be included in computing the charge. This exception also applies to legal holidays.

DOGS. Dogs are not allowed in coaches. When accompanied by passenger presenting valid transportation, dogs not exceeding twenty-five dollars (\$25.00) in value and not intended for other persons nor for sale, exhibition, bench shows or field trials, if properly muzzled and provided with strong, securely fitting collar or harness, on chain or other strong leash, or in substantial crates with strong handles will be transported in baggage service under a revenue check and charge made at excess baggage rates for gross weight. The minimum charge for each dog on leash will be the same as for one hundred (100) pounds of excess weight baggage and the minimum charge for one or more dogs in each crate will be the same as for fifty (50) pounds of excess weight baggage. Dogs not in crates will not be checked beyond junction points where wagon or ferry transfer is required. Dogs exceeding \$25.00 in value, or intended for exhibition, bench shows, or field trials, will not be transported in regular baggage service.

GUNS AND CLUB PARAPHERNALIA. Guns (unloaded) in wooden, leather or other substantial rigid cases only, club paraphernalia, such as baseball, cricket, football, golf, lodge, polo, lacrosse, soccer, in closed receptacles only, will be checked as excess baggage and charged for at excess baggage rates for gross weight; minimum charge same as for fifty (50) pounds excess weight baggage.

FOR CORPSE transported in baggage car a full first-class limited ticket at regular first-class limited rate, with minimum of \$1.20 will be required (regardless of age) in addition to the proper transportation for the escort, who must accompany the corpse on the same train (with transit permit issued by proper authority). A corpse thus ticketed and presented for shipment will be forwarded under baggage check, but will not be checked beyond a junction point where wagon transfer is required between depots and escort must make his own arrangements for the transfer and for checking of corpse beyond, except that via Chicago, Ill., or Salt Lake City, Utah, corpse may be checked through.

HAND BAGGAGE. As a matter of precaution, it is suggested that all hand baggage should show the name and permanent address of owner so that it can be returned promptly in case of error.

Hand baggage is not permitted in the aisles of coaches, chair cars or sleepers and must be restricted in size so that it will go under the seats or in berths.

LOST ARTICLES. Agents will do all in their power to assist in the recovery of lost articles. Passengers should not only give full description of the property, but should state date of loss, number of train and whether left in coach or Pullman car. All lost articles found on Denver & Rio Grande Western are forwarded to the General Baggage Agent, Union Depot, Denver, and all lost articles found on Western Pacific are forwarded to Station Master, Western Pacific Mole, Oakland, Calif. No responsibility is assumed for unchecked articles left in stations or cars.

REPRESENTATIVES OF NATIONAL TRAVELERS AID SOCIETY are at many of the larger stations for purposes of relief of distress and assistance of unprotected.

DENVER & RIO GRANDE WESTERN - WESTERN PACIFIC



DENVER & RIO GRANDE WESTERN RAILROAD WESTERN PACIFIC RAILROAD



PASSENGER AND FREIGHT REPRESENTATIVES

Who will be pleased to quote you fares, make sleeping car reservations, furnish descriptive literature and impart information regarding train service, connections, etc. A line to any one of them will bring forth a prompt reply.

- Boston, 9, Mass.—**
450 Old South Building, 294 Washington Street—
E. C. PATE, General Agent.
E. B. SMITH, Trav. Freight and Passenger Agent.
- Chicago, Ill.—**Room 700, 110 South Dearborn Street—
J. W. HOHL, General Agent.
G. W. WAHLBERG, City Passenger Agent.
RALPH J. VAN DYKE, Traveling Passenger Agent.
G. C. CLEGG, Traveling Passenger Agent.
C. DOMBROW, City Ticket Agent.
H. J. RIGGERT, City Freight Agent.
P. G. VAN SLYCK—City Freight Agent.
T. H. THOMPSON—Traveling Freight Agent.
B. F. GALLAGHER, Traveling Freight Agent.
- Cleveland, Ohio—**
503 Bangor Building, 942 Prospect Avenue—
J. H. HARPER, General Agent.
W. T. WAKFIELD, Trav. Freight and Pass'r Agent.
L. F. HARRIS, Trav. Freight and Passenger Agent.
- Colorado Springs, Colo.—**
1480 First National Bank Building,
Pikes Peak Avenue and Tejon Street—
D. G. PATTERSON, City Passenger Agent.
E. D. MORRISON, General Agent Freight Dept.
Consolidated Ticket Offices, 125 East Pikes Peak Ave.—
R. S. TORRINGTON, Agent.
- Denver, Colo.—**
229 Equitable Building, 17th and Stout Streets—
E. B. SANFORD, Passenger Agent.
T. B. EASLEY, Traveling Passenger Agent.
Patterson Building, 547 Seventeenth Street—
C. E. SPECHT, City Ticket Agent.
A. W. PARROTT, City Passenger Agent.
- Detroit, Mich.—**
1216 Dime Savings Bank Bldg., Fort and Griswold Sts.
H. T. SCOPFIELD, General Agent.
J. G. O'CONNELL, Trav. Freight and Pass'r Agent.
HOMER W. CUMMINGS, Trav. Freight and Pass'r Agt.
- Durango, Colo.—**D. & R. G. W. Depot—
P. B. MCATEE, Asst. Gen'l Freight and Pass'r Agt.
- Fort Worth, Texas—**
311 W. T. Waggoner Building, 8th and Houston Sts.—
L. J. ANDERSON, General Agent.
F. E. NEMEC, Traveling Passenger Agent.
- Fresno, Cal.—**501 Mason Building, 1044 Jay Street—
C. E. FLEMING, General Agent.
R. G. RANDOLPH, Trav. Freight and Passenger Agent.
- Grand Junction, Colo.—**
2b Canon Block, 4th and Main Streets—
F. C. HOGUE, General Agent.
- Honolulu, T. H.—**
(Western Pacific)
FRED L. WALDRON, Ltd., Agents.
- Kansas City, Mo.—**
336 Railway Exchange Building, 700 Walnut Street—
E. C. ROXBURY, General Agent.
H. F. KLERNE, Trav. Freight and Passenger Agent.
WM. D. FERNALD, Trav. Freight and Passenger Agent.
- Los Angeles, Cal.—**507 South Spring Street—
(Denver & Rio Grande Western)
E. S. BLAIR, General Agent.
T. S. BROWN, City Passenger Agent.
A. R. ANDERSON, Traveling Passenger Agent.
H. O. ANDERSON, City Freight Agent.
W. S. MENEFEE, City Freight Agent.
A. W. WOODINGTON, City Freight Agent.
(Western Pacific)
F. R. KANE, District Passenger Agent
- Manti, Utah—**
J. H. HORNUNG, General Agent.
- New York City—**1715 Barclay Bldg., 289 Broadway—
J. E. COURNEY, General Agent.
H. T. SAFFORD, Traveling Passenger Agent.
ARTHUR J. COX, City Passenger Agent.
J. A. MACMULLEN, Trav. Freight Agent.
D. F. GALLAGHER, Trav. Freight Agent.
W. H. WILKIN, City Freight Agent.
- Oakland, Cal.—**
436 Thirteenth Street—
A. H. MOFFITT, District Passenger Agent.
E. M. HANSEN, City Ticket Agent.
601 Easton Building, 428 Twelfth Street—
W. H. DAVENPORT, General Agent Freight Dept.
- Ogden, Utah—**
318 Eccles Building, 24th and Washington Avenue—
C. F. MOULTON, General Agent.
- Omaha, Neb.—**
806 Woodmen of the World Bldg., 14th and Farnam Sts.—
H. G. BOCK, General Agent.
L. O. MCMEKIN, Traveling Passenger Agent.
M. E. SIMMONS, Trav. Freight and Passenger Agent.
P. J. MURPHY, Trav. Freight and Passenger Agent.
- Pittsburgh, Pa.—**311 Park Bldg., 353-359 Fifth Ave.—
J. T. NEISON, General Agent.
J. W. O'BRIEN, Traveling Passenger Agent.
D. M. REYNOLDS, Traveling Freight Agent.
- Pocatello, Idaho—**
(Western Pacific)
V. H. CARSON, Trav. Freight and Passenger Agent.
- Portland, Ore.—**
415 Falling Building, 3d and Washington Streets—
W. C. MCBRIDE, General Agent.
E. B. DUFFY, Trav. Freight and Passenger Agent.
- Pueblo, Colo.—**
139 Central Block, 2d and Main Streets—
W. M. KIRKPATRICK, City Passenger Agent.
O. O. STANCHFIELD, General Agent Freight Dept.
Consolidated Ticket Offices 109 West Fourth Street—
S. C. BAKER, Agent.
- Reno, Nev.—**
325 East 4th Street—
G. L. MARTIN, General Agent.
J. P. FARLEY, Trav. Freight and Passenger Agent.
- Sacramento, Cal.—**1023 Eighth Street.
A. C. POTTER, General Agent.
W. D. MORRIS, City Passenger Agent.
W. R. GRAY, City Ticket Agent.
- St. Louis, Mo.—**
726 Pierce Building, 112 North Fourth Street—
L. D. GRUBER, General Agent.
W. A. PYLLE, Trav. Freight and Passenger Agent.
J. L. COOK, Trav. Freight and Passenger Agent.
H. I. EDDY, City Freight Agent.
- Salt Lake City, Utah—**
(Denver & Rio Grande Western)
201 Judge Building, Main and Third South Streets—
B. W. ROBBINS, Asst. Gen'l Freight and Pass'r Agent.
H. M. CUSHING, District Passenger Agent.
R. W. FLANDRO, Commercial Freight Agent.
V. A. TOMPKINS, Traveling Freight Agent.
340 South Main Street, (Next to Post Office)—
W. M. HUNNINGBERG, City Ticket Agent.
W. P. HARRINGTON, City Passenger Agent.
(Western Pacific)
Tribune Building, 147 South Main Street—
E. R. JENNINGS, General Agent Pass'r Dept.
G. A. MIX, City Passenger Agent.
A. J. GRAUVOGLT, Trav. Freight and Pass'r Agent.
IRA S. PEARCE, Trav. Freight and Passenger Agent.
- San Francisco, Cal.—**
Ferry Building—
J. L. SCOTT, General Agent Passenger Department.
G. W. CROSSEN, City Passenger Agent.
50 Post Street—
E. R. SCHAEFER, City Ticket Agent.
961 Mills Building, Bush and Montgomery Streets—
F. L. WAGNER, Traveling Passenger Agent.
202 Robert Dollar Building, 311 California Street—
W. J. SHOTWELL, Asst. General Freight Agent.
- San Jose, Cal.—**207 South First Street—
W. G. CURTIS, General Agent.
P. R. TOBIN, Trav. Freight and Passenger Agent.
- Santa Fe, N. M.—**
W. M. SCOTT, General Agent.
- Stockton, Cal.—**
211 Farmers and Merchants Building,
Main and San Joaquin Streets—
J. H. METTLER, General Agent.
T. J. PAXTON, Trav. Freight and Passenger Agent.
W. G. FINNEY, Trav. Freight and Passenger Agent.
- Trinidad, Colo.—**
D. & R. G. W. Freight Station,
Chestnut and Cedar Streets—
R. L. BROWN, General Agent.

THE WESTERN PACIFIC RAILROAD COMPANY

C. M. LEVEY, President, San Francisco, Cal.

- FRANK W. HODGES, Ass't General Passenger Agent, San Francisco, Cal.
- BODE K. SMITH, General Passenger Agent, San Francisco, Cal.
- H. K. FAYE, Traffic Manager, San Francisco, Cal.

THE DENVER & RIO GRANDE WESTERN RAILROAD SYSTEM

T. H. BEACOM, Receiver, Denver, Colo.

- FRED WILD, Chief Traffic Officer, Denver, Colo.
- GEORGE WILLIAMS, Gen'l Frt. Agt., Denver, Colo.
- B. W. ROBBINS, Ass't Gen'l Frt. and Pass'r Agt., Salt Lake City, Utah
- P. B. MCATEE, Ass't Gen'l Frt. and Pass'r Agt., Durango, Colo.
- W. H. CANDEY, General Passenger Agent, Denver, Colo.
- FRANK A. WADLEIGH, Passenger Traffic Manager, Denver, Colo.