

KEEP THE SAFETY HABIT

NUMBER ONE



**CAR
LOCATION
INVENTORY
CONTROL**

INSTRUCTIONS — MAPS
INDUSTRIAL ZONE, TRACK
SPOT NUMBERS

BELEN

NEW MEXICO DIVISION

ISSUED

MARCH 1, 1974

Instructions set forth below govern the operation of Car Location Inventory Control (CLIC) throughout the terminal of Belen. The terminal is divided into four zones with each zone having designated tracks and/or industries within its boundaries. Tracks are assigned specific numbers within the zones and spots on the tracks are given individual numbers. By using zone, track and spot numbers, we are able to print switch lists which will reflect the location to which a car should be spotted.

A CLIC Spot Number will consist of six digits - the first two digits designate the zone to which the car is destined; the second two digits indicate the track number within the zone; the last two digits represent the actual spot along the track.

EXAMPLE OF CLIC SPOT NUMBER

017101	<u>SEC</u>
	Spot Number
	Track Number
	Zone Number

All industries will be referred to by CLIC Spot Number rather than by name.

Switches have been painted with zone and track number shown on either target or stand. Spot numbers have been painted on doors, docks, buildings, gates, etc., where possible; otherwise, the proper spot can be determined by noting spot descriptions that are found just opposite zone maps on the following pages in this book.

These maps are not drawn to scale but merely serve as a guide in locating proper tracks or spots.

Instructions below specifically pertain to the physical switching, spotting and pulling of cars and are called particularly to the attention of all yardmen for their compliance:

THE YARDMASTER WILL HAVE COMPLETE CONTROL AND KNOWLEDGE OF ALL SWITCHING OF CARS.

SWITCHING IN TRAIN YARD

- (1) All switching in train yard will be performed by use of switch list unless otherwise instructed by Yardmaster
- (2) Disposition of car will be shown on list by Yardmaster just opposite car initial. This disposition will be indicated by means of track and/or spot number.
- (3) Yardmaster will indicate on switch list at which end of yards switching is to be performed.
- (4) Yardmaster will indicate on switch list where cuts, if any, are to be made, as follows:

1st Cut _____
2nd Cut _____
Etc.
- (5) Engine Foreman will switch cars according to list marked by Yardmaster. Should Engine Foreman switch or place car to some location other than that marked on list, or makes a cut different than marked by Yardmaster, he must so indicate on switch list and advise Yardmaster of this promptly.
- (6) Engine Foreman will advise Yardmaster of any car not shown on list and any disposition made of it.
- (7) Engine Foreman must notify Yardmaster of any exceptions taken to list, such as no car, car not on list or car out of line.
- (8) Yardmaster should be aware of all switching moves made in the yard and Engine Foreman must advise Yardmaster of any extra moves.

(B)

SWITCHING AT INDUSTRIES

- (1) All switching at industries will be performed by use of switch list unless otherwise instructed by Yardmaster.
- (2) Disposition to be made of car will be shown on list by Yardmaster just opposite car initial. This disposition will be indicated by track and/or spot number.
- (3) Engine Foreman will switch cars according to list marked by Yardmaster. Should Engine Foreman switch or place car to some location other than that marked on list, he must so indicate on list and advise Yardmaster of change.
- (4) If car is not actually spotted but left on that industry's track, Foreman will indicate "On Track Not Placed" in the following manner - O T N P. If car is placed on some other track, Foreman will indicate on list "Not Placed Left On (Track Number)" in the following manner - N P (Track Number)

(Example: ATSF 620510 N P 0450)
- (5) Engine Foreman will advise Yardmaster of disposition made of car or cars not shown on list.
- (6) Engine Foreman must notify Yardmaster of any exceptions taken to list, such as no car, car not on list, etc.
- (7) If an industry requests service not shown on Foreman's list, Engine Foreman should obtain such request in writing and deliver to Yardmaster after switching completed. If unable to obtain written request from industry, Foreman should record name of person requesting service on switch list showing service requested and performed.
- (8) If a car other than one ordered into industry by the Yardmaster is spotted, Engine Foreman must indicate on switch list car number spotted and notify Yardmaster of substitution.

(C)

(9) Engine Foreman will show on switch list time switching is completed at each industry.

(10) Yardmaster should be aware of all switching moves made at industries and Engine Foreman must advise Yardmaster of any extra moves.

(11) After switching is completed, Engine Foreman will indicate on switch list any work not completed, show time all switching on that list is completed, sign his name and return switch list to Yardmaster.

For observation and guidance, the following codes may be shown on switch list preceding car initial:

- Bl - Bad Order
- Cl - Condemned Car
- CU - Car completely unloads
- DN - Dangerous
- EP - Empty to be placed, or placed for loading
- EX - Explosive
- HB - Hold for billing
- HC - Hold for charges or permit
- HD - Hold for disposition
- HE - Head end movement only
- PU - Car partially unloads
- RE - Rear end movement only
- TU - Turn car and respot
- WH - Weigh heavy
- WL - Weigh light
- XX - Do not move this car

GOOD COMMUNICATION IS ESSENTIAL FOR

A SUCCESSFUL CLIC OPERATION. THE

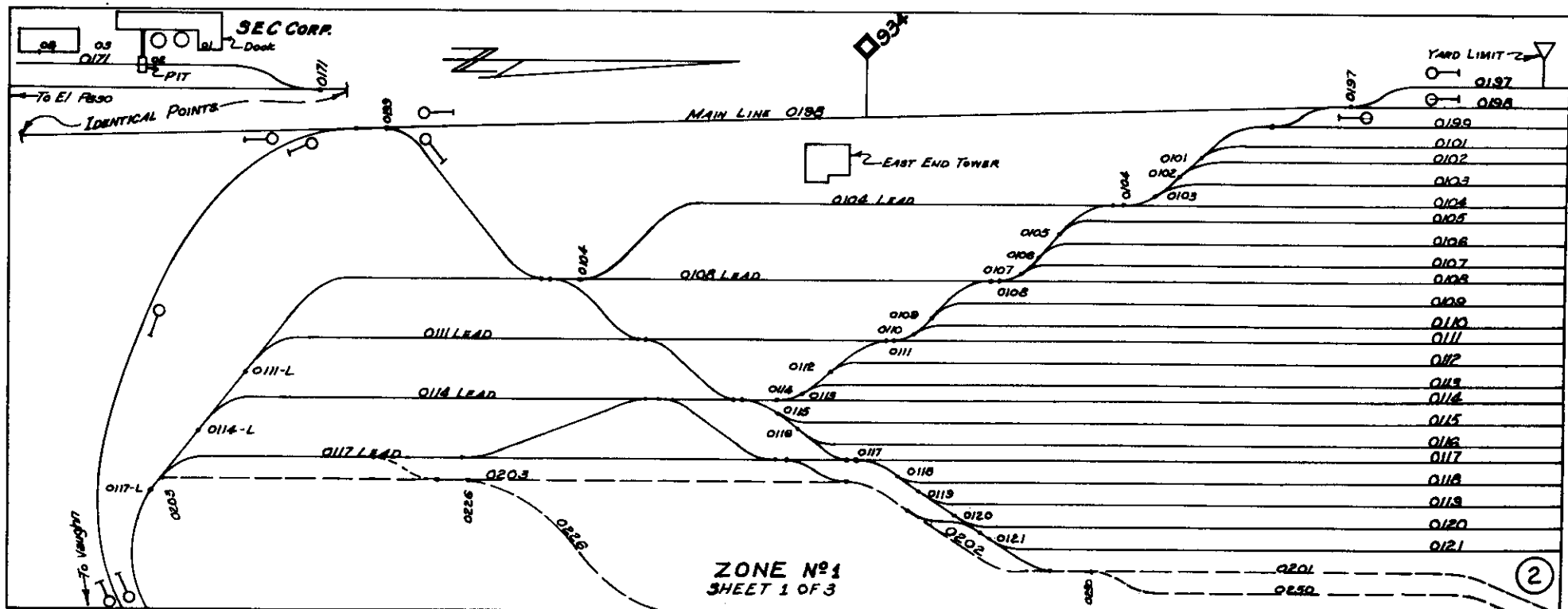
COMPLETE COOPERATION IS SOLICITED

OF EVERY EMPLOYEE.

ZONE ONE	YARD AREA
0101	Yard Track No. 1
0102	Yard Track No. 2
0103	Yard Track No. 3
0104-L	East End Lead Track
0104	Yard Track No. 4
0105	Yard Track No. 5
0106	Yard Track No. 6
0107	Yard Track No. 7
0108-L	East End Lead Track
0108	Yard Track No. 8
0109	Yard Track No. 9
0110	Yard Track No. 10
0111-L	East End Lead Track
0111	Yard Track No. 11
0112	Yard Track No. 12
0113	Yard Track No. 13
0114-L	East End Lead Track
0114	Yard Track No. 14
0115	Yard Track No. 15
0116	Yard Track No. 16

0117-L	East End Lead Track	
0117	Yard Track No. 17	
0118	Yard Track No. 18	
0119	Yard Track No. 19	
0120	Yard Track No. 20	
0121	Yard Track No. 21	
017101	SEC Corporation	Dock
017102	SEC Corporation	Pit
017103	SEC Corporation	Open Area
017104	SEC Corporation	Door
0197	Main Line No. 2	
0198	Main Line No. 3	
0199	Pass Track	

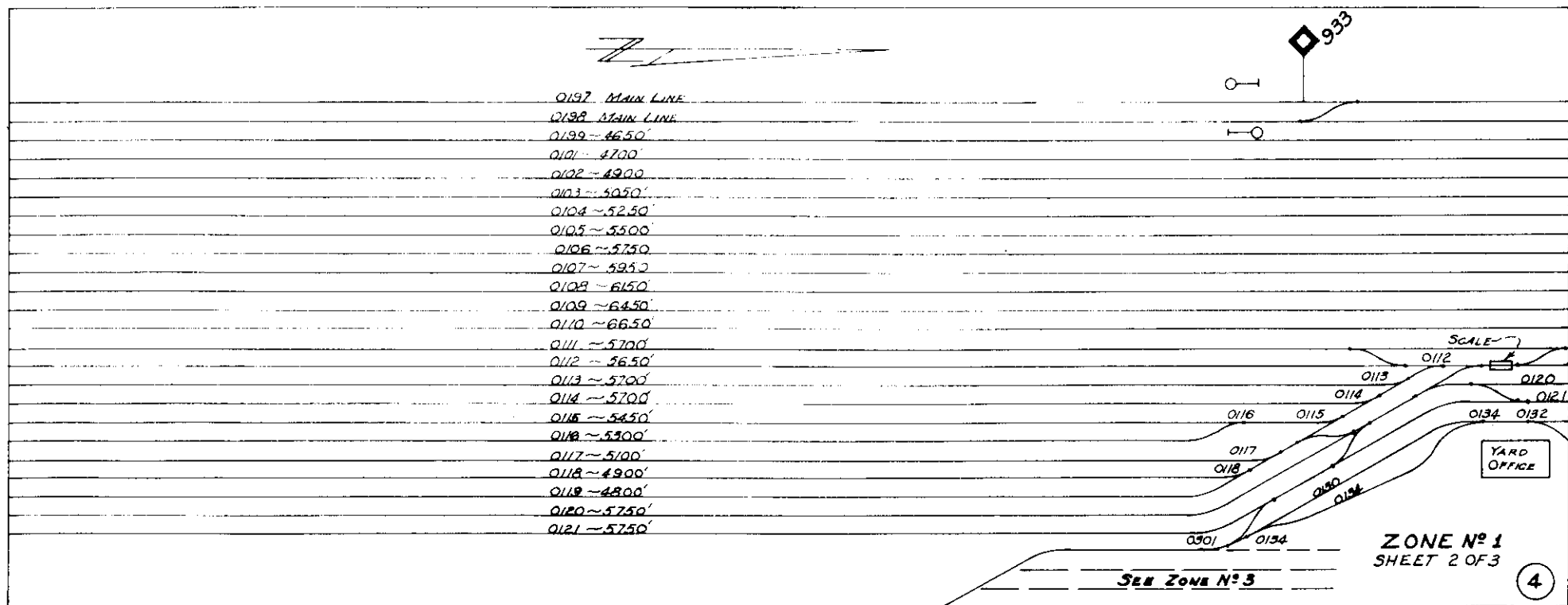
(1)



ZONE ONE (cont'd)	YARD AREA
0101	Yard Track No. 1
0102	Yard Track No. 2
0103	Yard Track No. 3
0104	Yard Track No. 4
0105	Yard Track No. 5
0106	Yard Track No. 6
0107	Yard Track No. 7
0108	Yard Track No. 8
0109	Yard Track No. 9
0110	Yard Track No. 10
0111	Yard Track No. 11
0112	Yard Track No. 12
0113	Yard Track No. 13
0114	Yard Track No. 14
0115	Yard Track No. 15
0116	Yard Track No. 16
0117	Yard Track No. 17
0118	Yard Track No. 18
0119	Yard Track No. 19
0120	Yard Track No. 20

0121	Yard Track No. 21
0130	Roundhouse Lead
0132	Derrick Track
0134	Cab Track
0197	Main Line No. 2
0198	Main Line No. 3
0199	Pass Track

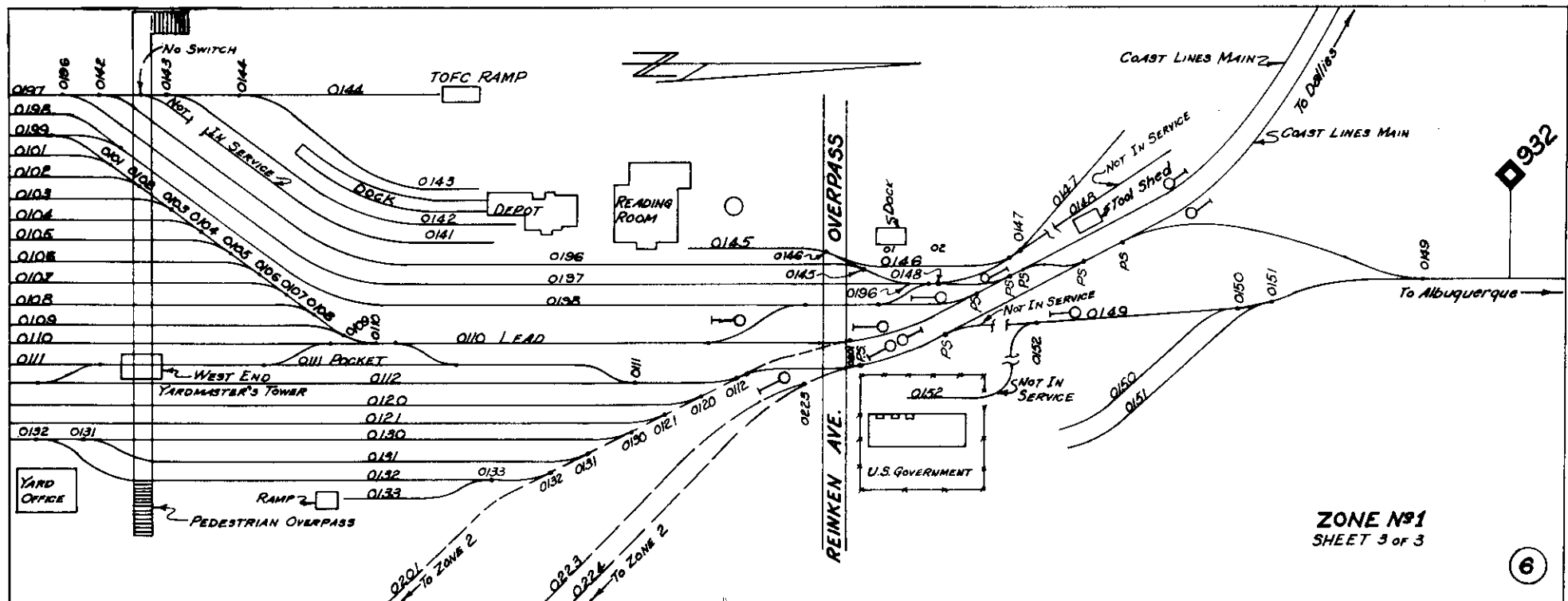
(3)



ZONE ONE (cont'd)	YARD AREA
0101	Yard Track No. 1
0102	Yard Track No. 2
0103	Yard Track No. 3
0104	Yard Track No. 4
0105	Yard Track No. 5
0106	Yard Track No. 6
0107	Yard Track No. 7
0108	Yard Track No. 8
0109	Yard Track No. 9
0110-L	West End Lead Track
0110	Yard Track No. 10
0111	Yard Track No. 11
0111-P	Pocket West End
0112	Yard Track No. 12
0120	Yard Track No. 20
0121	Yard Track No. 21
0130	Roundhouse Lead
0131	Cab Track Old
0132	Derrick Track
0133	Bow Ramp

0141	House Trk No. 1 (Not in Service)	
0142	House Trk No. 2	
0143	House Trk No. 3	
0144	TOFC Ramp - Mail Ramp	
0145	Business Car Spur	
0146	Team Track	
014601	Ranchero Bldrs	Dock Ramp
014602	Team Track	Open Area
0147	Conoco Spur	
0148	Psgr Swtg Longtail (Not in Service)	
0149	Longtail	
0150	Bunk Car Spur West	
0151	Bunk Car Spur East	
0152	Conservancy Spur (Not in Service)	
0196	Main Line No. 1	
0197	Main Line No. 2	
0198	Main Line No. 3	
0199	Pass Track	

(5)

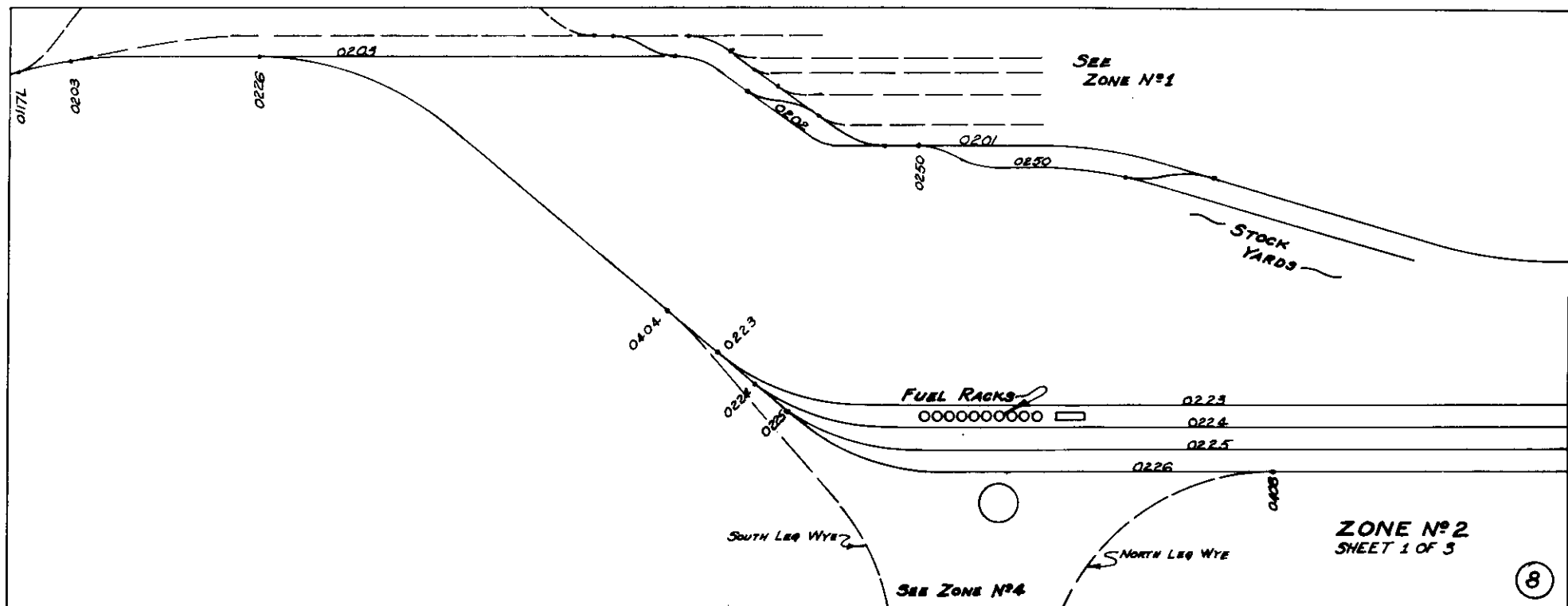


ZONE No. 1
SHEET 3 of 3

6

ZONE TWO	YARD AREA
0201	Roundhouse Lead Old
0202	Engine Lead Pocket
0203	Engine Lead at East End
0223	Yard Track No. 23
0224	Yard Track No. 24
0225	Yard Track No. 25
0226	Yard Track No. 26
0250	Stock Track

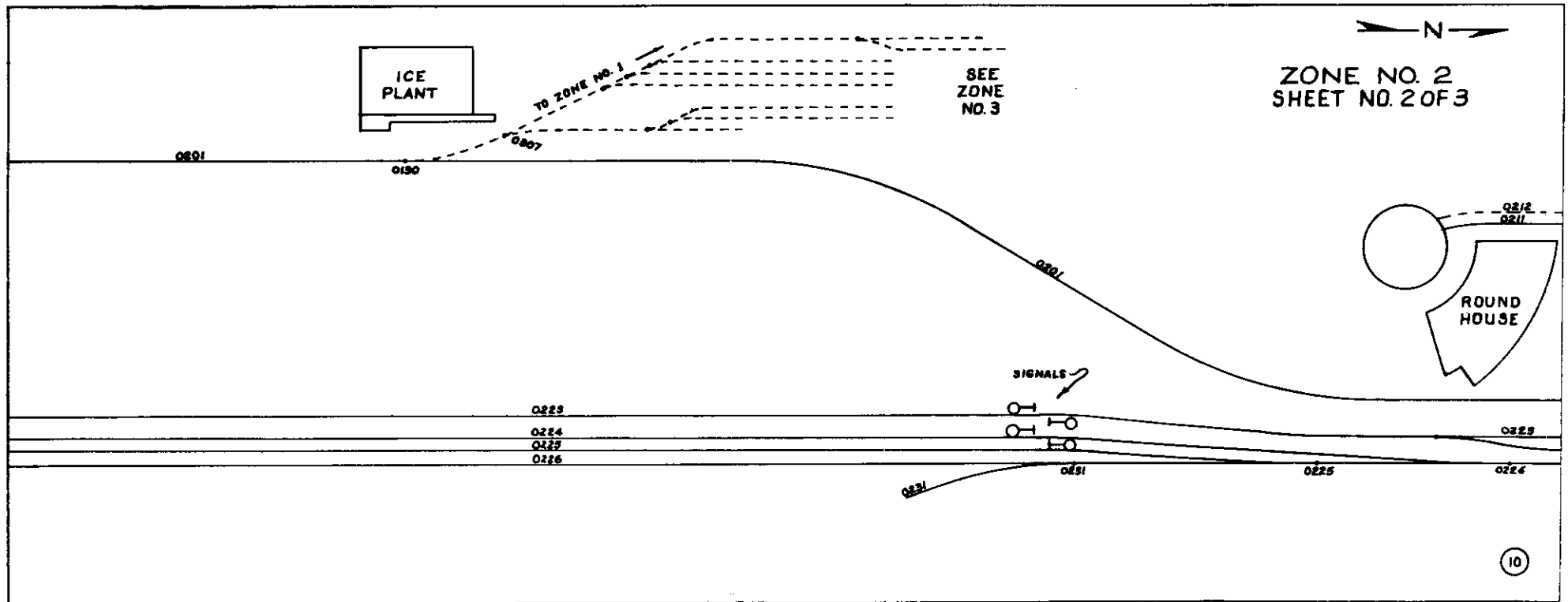
(7)



ZONE TWO (cont'd) YARD AREA

- 0201 Roundhouse Lead Old
- 0211 Roundhouse West Service Track
- 0212 Storehouse Track (Not in Service)
- 0223 Yard Track No. 23
- 0224 Yard Track No. 24
- 0225 Yard Track No. 25
- 0226 Yard Track No. 26
- 0231 Reclaimed Oil Spur

(9)

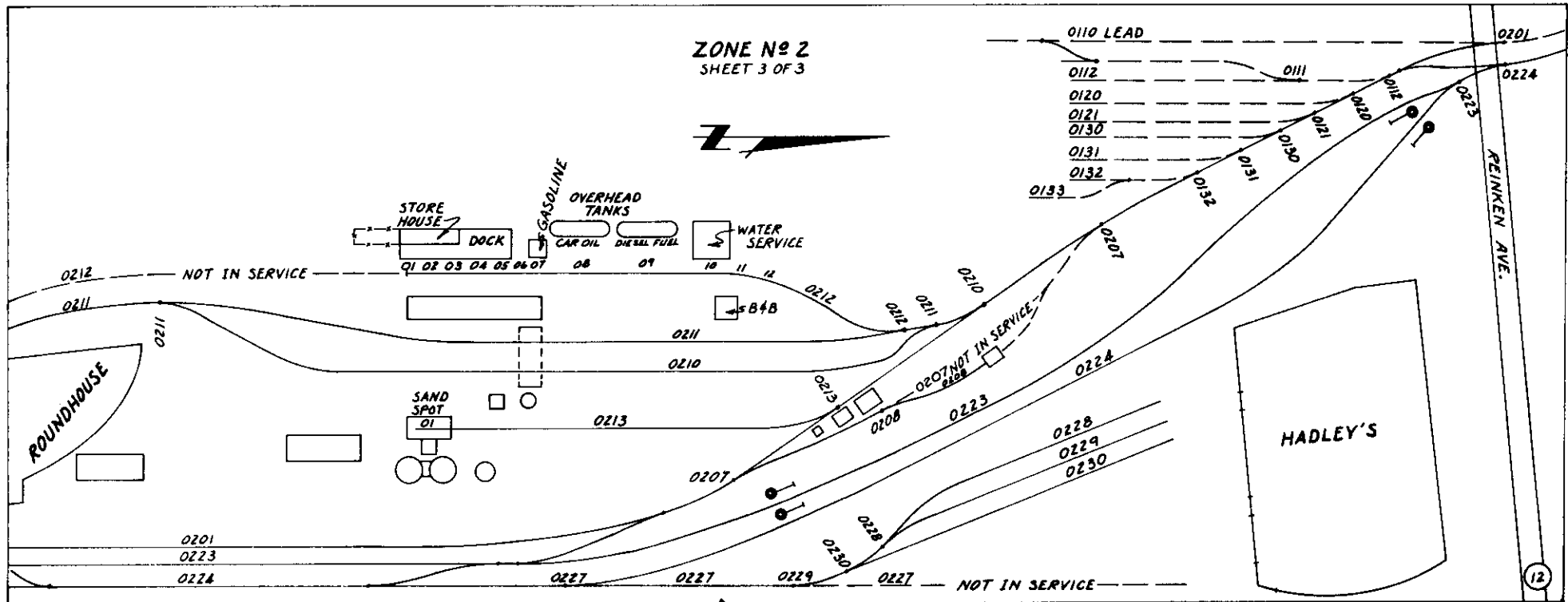


ZONE TWO (cont'd) YARD AREA

0201	Roundhouse Lead Old	
0207	East Cab Track Old	
0208	Holloman Spur	
0210	Roundhouse East Service Track	
0211	Roundhouse West Service Track	
0212	Storehouse Track	
021201	Storehouse Track	Open Dock
021202	Storehouse Track	Open Dock
021203	Storehouse Track	Open Dock
021204	Storehouse Track	Open Dock
021205	Storehouse Track	Open Dock
021206	Storehouse Track	Open Area
021207	Storehouse Track	Gasoline
021208	Storehouse Track	Car Oil
021209	Storehouse Track	Diesel Fuel
021210	Storehouse Track	Open Area

021211	Storehouse Track	Open Area
021212	Storehouse Track	Open Area
0213	Sand Spur	
021301	Sand Spur	Sand Spout
0223	Yard Track No. 23	
0224	Yard Track No. 24	
0227	Hadley Longtail (Not in Service)	
0228	Hadley No. 1	
0229	Hadley No. 2	
0230	Hadley No. 3	

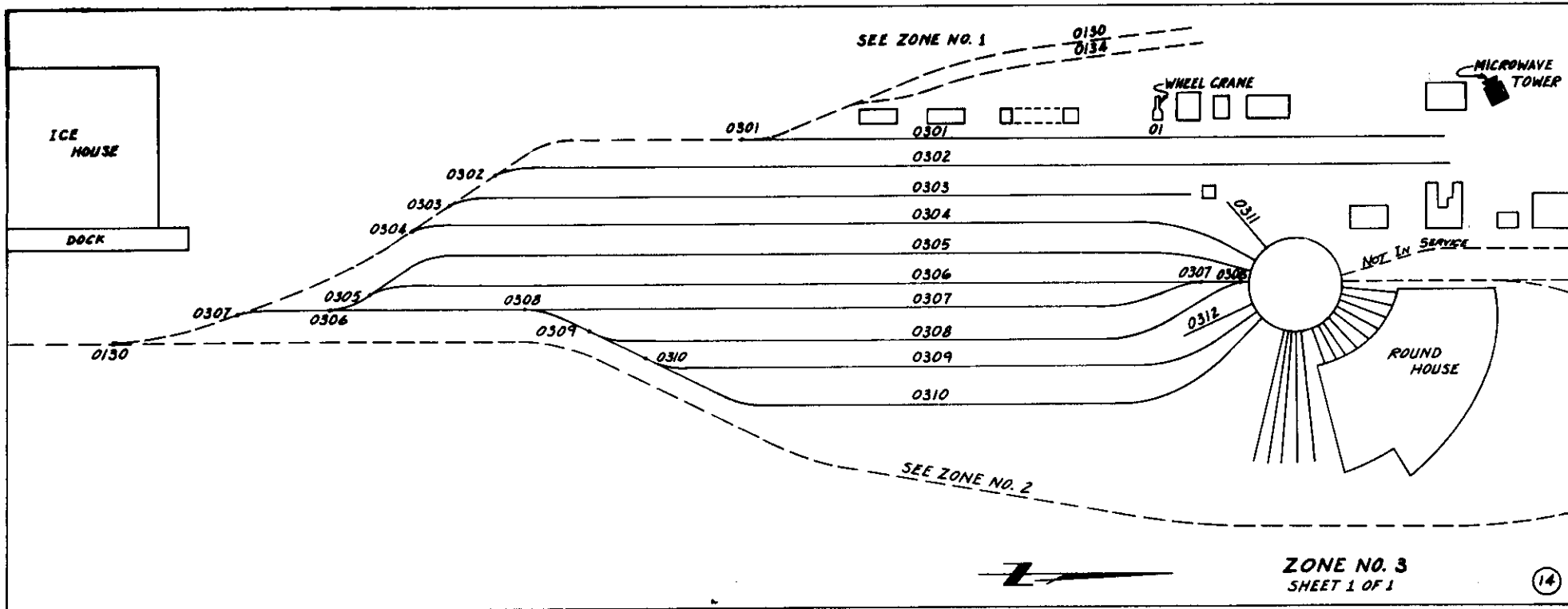
(11)



ZONE THREE YARD AREA

- 0301 Rip Track No. 1
- 030101 Rip Track No. 1 Wheel Crane
- 0302 Rip Track No. 2
- 0303 Rip Track No. 3
- 0304 Rip Track No. 4
- 0305 Rip Track No. 5
- 0306 Roundhouse Inbound Track
- 0307 Roundhouse Outbound Track
- 0308 Roundhouse Track
- 0309 Roundhouse Track
- 0310 Roundhouse Track
- 0311 Roundhouse Track
- 0312 Roundhouse Track

(13)



<u>ZONE FOUR</u>	<u>YARD AREA</u>	
0401	Conditioning Track	
040101	Conditioning Track	Lumber Shed
040102	Conditioning Track	Door
040103	Conditioning Track	Ramp
0402	Conditioning Track	
040299	Sky View Cooling	Open
0403	Conditioning Track	
0404	Conditioning Track	and South Leg Wye
0405	Conditioning Track	(Not in Service)
0406	Conditioning Track	
0407	Conditioning Track	
0408	North Leg Wye	
0450	Industry Lead	
045101	Cannon Craft	Dock
045102	Cannon Craft	Dock
045103	Cannon Craft	Spout
045104	Cannon Craft	Door
045105	Cannon Craft	Door
045106	Cannon Craft	Door
045107	Cannon Craft	Door

(15)

