



THE BANK OF CALIFORNIA NATIONAL ASSOCIATION

Total Resources over \$133,000,000

PORTLAND—S. W. Sixth Ave. at Stark St.
San Francisco — Tacoma — Seattle

Commercial, Foreign, Savings, Trust and
Safe Deposit Departments

Member, Federal Deposit Insurance Corp.

RAILWAY EMPLOYEES TIME AND SENIORITY BOOK 1938

J. H. DOBBINS — PUBLISHERS — O. R. EAGAN

Brandt & Zimmer

Expert Watchmakers,
Jewelers and Violin Makers

Authorized Watch Inspectors for the
Southern Pacific and Northern Pacific
Terminal R. R. Companies

Complete line of Diamonds, Watches, Clocks,
Jewelry, Violins, Strings and Supplies
Fine Repairing in all above lines

270 S. W. ALDER ST.
PORTLAND, OREGON

PHONE ATWATER 3932
CENTRALLY LOCATED

Shop at Sears

And Save Money!

These Famous Trade Names Assure You
Of The Finest Materials and Workmanship
AT SEARS UNUSUALLY LOW PRICES

SILVERTONE RADIOS
PROSPERITY RANGES
ALL STATE TIRES
HERCULES OIL BURNERS
COLDSPOT REFRIGERATOR
ELGIN BICYCLES
CRAFTSMAN TOOLS
CROSS COUNTRY OIL
FASHION TAILORED SUITS
BILTWELL SHOES
SEROCO PAINTS

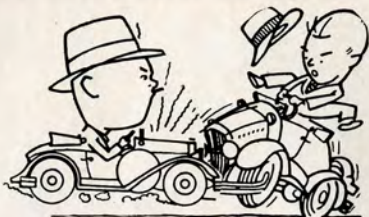
SEARS ROEBUCK & CO.

GRAND AVENUE
At Lloyd Blvd.

OPEN SAT. EVE
Until 9

Index to Advertisers

	Page
Acme Window Shade Co.	96
Adcox, L. L. Trade School	2
Aladdin Cleaners & Dyers	81
Allyn's Dyeing & Cleaning Establishment	68
Al's Union Service	87
Army & Navy Retail Store	85
Bagdad Service Station	64
Baron's Shoe Store	87
Bank of California, N. A.	Front Cover
Belland Parking Lots	90
Billings Body Works	86
Bowen's Service Station	91
Bowman, Dan, Inc.	51
Boyd Tea Co.	24
Bradford's, Mike, Service Station	93
Bradley's Pies, Inc.	38
Brandt & Zimmer	Front Cover
Broiler, The	43
Brooks Service Station	91
Burgard, John H. & Co.	88
Carruthers Stores, Inc.	70
Chapman Bros. Service Station	94
Chappell J., Service Station	91
Chauncey, J. R.	89
City Dairy	88
Cohen-Anderson Motor Co., Inc.	79
Cohn Bros., Home Furnishers	92
Conger Lantern Co.	92
Copeland, Harry, Tailor & Clothing Store	33
D'Arcy's Castle Florists	63
Daves Stadium Service	96
Dependable Auto Service	86
DeYoung & Vermeal	90
Dorsey Motor & Brake Co.	95
Du Bois Motor Co.	4
Duke's Modern Pit	61
Eastern Outfitting Co.	Inside Back Cover
Evergreen Finance Company	58
Fahey Brockman Clothes Shop	81
Fick Cigar Co., Inc.	3
Fields Motor Car Co.	2
First National Bank, The	40
Ford, C. J., Auto Service	73
Frank Chevrolet Co.	93
Gill, J. K. Co., The	90
Good At Auto Service	71
Goodrich Silvertown Stores	84
Griffins Cafeteria	88
Griffith Rubber Mills	93
Halpin, J. S., Clothier	86
Hamilton Mortuary	78
Hawkinson Tire Tread Service	64
Hawthorne Service Garage	95
Hercules Powder Co.	89
Hill's Groceries	73
Hirsch-Weis Mfg. Co.	89
Honeyman Hardware Co.	Outside Back Cover
Hoyt Cafe	89
Interstate Garage, Inc.	93
Jack & Van, Inc.	88
Jack's Super Service Station	70
Jenning's Furniture Co.	6
Jolly Joan	27
Kadderly Co., J. J., Hardware	86
Kelly's Olympian Co.	79
Lineham Motor Co.	61
Lipman, Wolfe & Co.	24
Logan Oldsmobile Co.	82
Lowey & Co., Furnishings	63
Lubliner's, Inc., Florist	92
Meier & Frank Co.	25
Mike's Service Station	93
Miller's Associated Station	87
Montag Stove & Furnace Works	45
Moore's Dress Shop	87
Moreland Funeral Home	Outside Back Cover
Moreland Shade & Venetian Blind Shop	96
Nash, A. Co., Tailors	86
Nau, Frank, Pharmacy	76
Noce, John, Tailor	95
Nudelman Bros., Uniforms	48
Olds, Wortman & King	8



CRASH! BUMP! DENT! SCRATCH!

You pay only low clinical charge

BODY AND FENDER REPAIR DEPARTMENT

Repairs **GUARANTEED** Satisfactory

Union Ave. at Wasco Call TRinity 4774

L. L. ADCOX TRADE SCHOOL

MENTION THIS BOOK

Fields Motor Car Co.

Chevrolet Dealers Since 1916



SALES and SERVICE

W. Side Salesroom

Pacific Building
6th & Yamhill

BRoadway 2536

Grand Ave. at E. Ankeny

EAsT 0181

Index to Advertisers

	Page
Oregon Textile Mills.....	77
Oregon Woolen Store.....	65
Parking Lots, Belland.....	90
Pendleton Woolen Mills.....	27
Figgly Wiggly Co.....	75
Portland Ice & Cold Storage Co.....	90
Portland Outdoor Store.....	5
Portland Seed & Pet Store.....	58
Portland Woolen Mills.....	85
Powers Furniture Co.....	28
Pownall, H. C., Insurance Agency.....	48
Proctor's.....	7
Reed, A., Dr., Cushion Shoe Store.....	85
Reliable Shoe Store.....	37
Richardson, J. B., Optometrist.....	77
Roberts Bros.....	75
Rogers Dillen, Jeweler.....	85
Rosenblatt, Sam'l Co., Clothing.....	70
Rotoway Service Station.....	94
Rulo Service Co.....	94
Rushlight, A. G. & Co.....	51
Sears, Roebuck & Co.....	Inside Front Cover
Sheldon's Service Station.....	89
Shipley, W. W. Co., Autos.....	84
Signal Service Stations.....	91
Silshy Finance Co., Inc.....	63
Snyder, Earl T., Optometrist.....	71
Speedway Lubricators & Auto Greasers.....	79
Stanley's Radio & Electric Shop.....	61
Sunnyside Fuel Co.....	64
S. & J. Meat Co.....	64
Tracey, Tom, Cigars.....	88
Troy Laundry Co.....	68
Tucker Coffee Co.....	79
Union Station Garage.....	23
United States National Bank.....	25
Vana, Jos., Quality Auto Painting Co.....	94
Viaene, C. J., Service Station.....	91
Vines, H. H., Jeweler.....	42
Wahl Plumbing & Heating.....	61
Walker & Roach, Roofing.....	82
Wally's Lunch.....	92
Weiner, Joe, Clothing.....	65
Wells, Harvey & Co., Insurance.....	95
West Hills Memorial Park.....	56
Woolley & Mohland Auto Service.....	94

FICK CIGAR CO., Inc.

Distributors for

JUAN De FUCA, WEBSTER and

CARABANA CIGARS

and

Olympia Beer

414 N. W. 6th Ave.

BR. 6511

We ship all New Pontiacs
by Rail

OUR HIGH GRADE USED CARS
ASSURE SATISFACTION

**DU BOIS
MOTOR CO.**

West 14th at Burnside BEacon 6321

SWITCHMEN—Engine Foreman's Overtime Computed After 8 Hours, 8—7.58

M'n.	0	5	10	15	20	25	30	35	40	45	50	55
Hrs.												
8...	7.58	7.69	7.80	7.91	8.02	8.13	8.24	8.36	8.47	8.58	8.69	8.80
9...	8.91	9.03	9.14	9.25	9.36	9.47	9.58	9.70	9.81	9.92	10.03	10.14
10...	10.25	10.36	10.48	10.59	10.70	10.81	10.92	11.03	11.15	11.26	11.37	11.48
11...	11.59	11.70	11.82	11.93	12.04	12.15	12.26	12.37	12.48	12.60	12.71	12.82
12...	12.93	13.04	13.15	13.27	13.38	13.49	13.60	13.71	13.82	13.94	14.05	14.16
13...	14.27	14.38	14.49	14.60	14.72	14.83	14.94	15.05	15.16	15.27	15.39	15.50
14...	15.61	15.72	15.83	15.94	16.06	16.17	16.28	16.39	16.50	16.61	16.72	16.84
15...	16.95	17.06	17.17	17.28	17.39	17.51	17.62	17.73	17.84	17.95	18.06	18.17
16...	18.29											

SWITCHMEN—Helpers' Overtime Computed After 8 Hours—8—7.06

M'n.	0	5	10	15	20	25	30	35	40	45	50	55
Hrs.												
8...	7.06	7.16	7.26	7.37	7.47	7.57	7.69	7.78	7.88	7.99	8.09	8.19
9...	8.30	8.40	8.50	8.61	8.71	8.81	8.92	9.02	9.12	9.23	9.33	9.43
10...	9.54	9.64	9.74	9.85	9.95	10.05	10.16	10.26	10.36	10.47	10.57	10.67
11...	10.78	10.88	10.98	11.09	11.19	11.29	11.40	11.50	11.60	11.71	11.81	11.91
12...	12.03	12.13	12.23	12.34	12.44	12.54	12.65	12.75	12.85	12.96	13.06	13.16
13...	13.27	13.37	13.47	13.58	13.68	13.78	13.89	13.99	14.09	14.20	14.30	14.40
14...	14.51	14.61	14.71	14.82	14.92	15.02	15.13	15.23	15.33	15.44	15.54	15.64
15...	15.75	15.85	15.95	16.06	16.16	16.26	16.37	16.47	16.57	16.68	16.78	16.88
16...	16.99											

Portland OUTDOOR STORE

304 S. W. 3rd Ave. Corner of Oak
ATwater 1753



ATTENTION! Railroaders!

WE SELL THE BEST IN
WORK & RAIN CLOTHES
Complete Stocks:—

- Filson's Canvas Rain and Work Clothes.
- Filson's Wool Stag Shirts and Cruisers.
- Titex Rain Suits.
- Typhoon Rain Suits.
- Hirsch - Weis Wool Stag Shirts, Cruisers and Rain Clothes.
- Alligator and Rubber Rain Clothes.
- Pendleton Fine Wool Shirts.

BOOTS & SHOES

BEST IN QUALITY
LOWEST PRICES

America's finest footwear, made to give long service. All types of Boots and Shoes including Safety.

Shoes for Railroad Men.

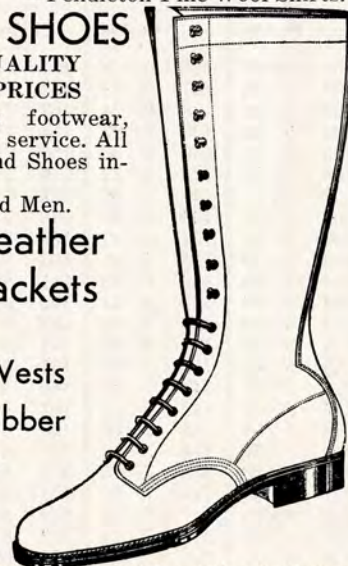
Full Line Leather
Coats & Jackets

Sheep Lined
Coats and Vests

Ball Brand Rubber
Boots & Shoes

Work Pants
Breeches, etc.

We Appreciate the Patronage of all Railroad Men & Workers



Jennings's

DEPENDABLE SINCE '77

Furniture and Home Furnishings

10th and Washington Streets, Portland, Oregon

Over 60 years of Good Furniture

Large Selection of Good Furniture
and Rugs for Every Use

Exclusive Distributors of the
famous Monarch Ranges
Railroad Employees are Invited
to use Our Credit Facilities

CALCULATING TABLE—MILEAGE BASIS

Showing Road Overtime on Mileage Basis 101 to 200 Miles in length
on Speed Basis of 20 Miles per Hour

Miles	20 Miles Per Hr.		Miles	20 Miles Per Hr.		Miles	20 Miles Per Hr.		Miles	20 Miles Per Hr.	
	Hr. Min.			Hr. Min.			Hr. Min.			Hr. Min.	
101	5	03	126	6	18	151	7	33	176	8	48
102	5	06	127	6	21	152	7	36	177	8	51
103	5	09	128	6	24	153	7	39	178	8	54
104	5	12	129	6	27	154	7	42	179	8	57
105	5	15	130	6	30	155	7	45	180	9	00
106	5	18	131	6	33	156	7	48	181	9	03
107	5	21	132	6	36	157	7	51	182	9	06
108	5	24	133	6	39	158	7	54	183	9	09
109	5	27	134	6	42	159	7	57	184	9	12
110	5	30	135	6	45	160	8	00	185	9	15
111	5	33	136	6	48	161	8	03	186	9	18
112	5	36	137	6	51	162	8	06	187	9	21
113	5	39	138	6	54	163	8	09	188	9	24
114	5	42	139	6	57	164	8	12	189	9	27
115	5	45	140	7	00	165	8	15	190	9	30
116	5	48	141	7	03	166	8	18	191	9	33
117	5	51	142	7	06	167	8	21	192	9	36
118	5	54	143	7	09	168	8	24	193	9	39
119	5	57	144	7	12	169	8	27	194	9	42
120	6	00	145	7	15	170	8	30	195	9	45
121	6	03	146	7	18	171	8	33	196	9	48
122	6	06	147	7	21	172	8	36	197	9	51
123	6	09	148	7	24	173	8	39	198	9	54
124	6	12	149	7	27	174	8	42	199	9	57
125	6	15	150	7	30	175	8	45	200	10	00

Portland's Leading Women's Apparel Store

Always the Newest

In Style

DRESSES
COATS
SUITS
UNDERWEAR
BAGS

MILLINERY
SHOES
HOSIERY
SPORTS WEAR
BLOUSES

AT POPULAR PRICES

OPEN A CHARGE ACCOUNT

AS LITTLE AS \$1.00 DOWN OPENS AN ACCOUNT



CALCULATING TABLE—HOURLY BASIS

Showing Time after which overtime accrues on runs of 100 to 199 Miles
in Length on Speed Basis of 12½ Miles per Hour.

Miles	Hours	Miles	Hours	Miles	Hours	Miles	Hours
100	8.00	125	10.00	150	12.00	175	14.00
101	8.05	126	10.05	151	12.05	176	14.05
102	8.10	127	10.10	152	12.10	177	14.10
103	8.14	128	10.14	153	12.14	178	14.14
104	8.19	129	10.19	154	12.19	179	14.19
105	8.24	130	10.24	155	12.24	180	14.24
106	8.29	131	10.29	156	12.29	181	14.29
107	8.34	132	10.34	157	12.34	182	14.34
108	8.38	133	10.38	158	12.38	183	14.38
109	8.43	134	10.43	159	12.43	184	14.43
110	8.48	135	10.48	160	12.43	185	14.48
111	8.53	136	10.53	161	12.53	186	14.53
112	8.58	137	10.58	162	12.58	187	14.58
113	9.02	138	11.02	163	13.02	188	15.02
114	9.07	139	11.07	164	13.07	189	15.07
115	9.12	140	11.12	165	13.12	190	15.12
116	9.17	141	11.17	166	13.17	191	15.17
117	9.22	142	11.22	167	13.22	192	15.22
118	9.26	143	11.26	168	13.26	193	15.26
119	9.31	144	11.31	169	13.31	194	15.31
120	9.36	145	11.36	170	13.36	195	15.36
121	9.41	146	11.41	171	13.41	196	15.41
122	9.46	147	11.46	172	13.46	197	15.46
123	9.50	148	11.50	173	13.50	198	15.50
124	9.55	149	11.55	174	13.55	199	15.55

OLDS WORTMAN & KING

BRoadway 7711

*When furnishing or
remodeling your
home...investigate*

Our Personalized Credit

A plan that enables you to make weekly or monthly payments to suit your individual need. Ask for full details at our Credit Office

Olds & King's Credit Office—Fourth Floor

SWITCHMEN—Engine Foreman's Overtime Computed After 8 Hours, 8—7.58

M'n.	0	5	10	15	20	25	30	35	40	45	50	55
Hrs.												
8...	7.58	7.69	7.80	7.91	8.02	8.13	8.24	8.36	8.47	8.58	8.69	8.80
9...	8.91	9.03	9.14	9.25	9.36	9.47	9.58	9.70	9.81	9.92	10.03	10.14
10...	10.25	10.36	10.48	10.59	10.70	10.81	10.92	11.03	11.15	11.26	11.37	11.48
11...	11.59	11.70	11.82	11.93	12.04	12.15	12.26	12.37	12.48	12.60	12.71	12.82
12...	12.93	13.04	13.15	13.27	13.38	13.49	13.60	13.71	13.82	13.94	14.05	14.16
13...	14.27	14.38	14.49	14.60	14.72	14.83	14.94	15.05	15.16	15.27	15.39	15.50
14...	15.61	15.72	15.83	15.94	16.06	16.17	16.28	16.39	16.50	16.61	16.72	16.84
15...	16.95	17.06	17.17	17.28	17.39	17.51	17.62	17.73	17.84	17.95	18.06	18.17
16...	18.29											

SWITCHMEN—Helpers' Overtime Computed After 8 Hours—8—7.06

M'n.	0	5	10	15	20	25	30	35	40	45	50	55
Hrs.												
8...	7.06	7.16	7.26	7.37	7.47	7.57	7.69	7.78	7.88	7.99	8.09	8.19
9...	8.30	8.40	8.50	8.61	8.71	8.81	8.92	9.02	9.12	9.23	9.33	9.43
10...	9.54	9.64	9.74	9.85	9.95	10.05	10.16	10.26	10.36	10.47	10.57	10.67
11...	10.78	10.88	10.98	11.09	11.19	11.29	11.40	11.50	11.60	11.71	11.81	11.91
12...	12.03	12.13	12.23	12.34	12.44	12.54	12.65	12.75	12.85	12.96	13.06	13.16
13...	13.27	13.37	13.47	13.58	13.68	13.78	13.89	13.99	14.09	14.20	14.30	14.40
14...	14.51	14.61	14.71	14.82	14.92	15.02	15.13	15.23	15.33	15.44	15.54	15.64
15...	15.75	15.85	15.95	16.06	16.16	16.26	16.37	16.47	16.57	16.68	16.78	16.88
16...	16.99											

Passenger Conductors, Southern Pacific Co.

JULY 1, 1937

PORTLAND DIVISION

No.	Name	First Date of Service	Promoted to Conductor
1.	Hamblin, A. G.	8-17-94	4-28-98
2.	Billing, E. H.	9-14-95	10- 6-98
3.	Tynan, Jas. W.	11-14-95	9-18-98
4.	Merian, E. T.	12-27-97	11-19-00
5.	Crandall, M. H.	5-19-98	9-26-01
6.	Riley, T. E.	3- 2-00	7- -02
7.	Sellers, J. W.	10-11-99	8-14-04
8.	Patrick, J. B.	3- 2-00	8-28-04
9.	Fronk, E. A.	4-20-00	5- 7-05
10.	Trapp, C.	7- 9-03	6- -05
11.	Downs, A. L.	5-27-01	9-23-05
12.	Carman, A. J.	8- 2-00	4-28-06
13.	Scruggs, W. L.	4-16-02	5-26-06
14.	Clark, D. G.	5-18-02	5-26-06
15.	Johnson, L. C.	7- 3-04	9-20-06
16.	Scruggs, E. R.	12-26-03	6-18-07
17.	McConnell, S.	5-21-04	6-18-07
18.	Johnson, O. C.	8-19-04	6-18-07
19.	Jackson, C. C.	9-15-05	9-15-07
20.	Banks, W. H.	8- 8-05	6- 6-09
21.	Allison, H. E.	8-31-05	6- 7-09
22.	Graham, C. M.	1-25-06	6- 9-09
23.	Underhill, M. D.	3-21-06	6-11-09
24.	Lane, R. W.	4-18-03	7-15-09
25.	Van Leuven, M. C.	4-27-06	7-17-09
26.	Lally, J. S.	5- 3-06	7-18-09
27.	Carter, A. L.	5- 6-06	7-18-09
28.	Larwood, J. E.	5-20-06	7-21-09
29.	Baker, R. M.	4-27-02	3-28-10
30.	Adams, E. C.	6-27-06	5- 8-10
31.	Wood, E. T.	2- 1-08	8- 9-10
32.	Balle, H.	9- 3-06	11- 3-10
33.	Fisher, L. V.	10-21-06	11- 5-10
34.	Bryan, D. J.	12-31-06	11- 7-10
35.	Newton, G. D.	2-12-07	11- 8-10
36.	Gardennire, F. J.	2-14-07	11- 9-10
37.	Worthington, G. C.	9-18-10	5- 1-11
38.	Bentley, E. E.	7- 8-11	9- 1-11
39.	Renfro, C. C.	9- 1-11	9-11-11
40.	Trimble, Geo.	1-12-12	2-18-12
41.	McCarter, J. E.	3-27-11	5-20-12
42.	Hendryx, C. E.	6- 9-06	6-16-12
43.	Hughes, W.	9-22-06	6-22-12
44.	Gilvin, R. W.	6-25-10	6-25-12
45.	McAllister, O. D.	5-19-07	6-27-12
46.	Rankin, J. H.	5-19-07	6-28-12
47.	Monroe, F. S.	6-21-07	6-29-12
48.	McGonnell, C. L.	10- 8-07	12- 5-12
49.	Coffin, A.	10-30-07	12-16-12
50.	Hamilton, M. C.	5-28-09	12-19-12
51.	Beckley, A. H.	7- 3-09	12-21-12
52.	McDonald, W. W.	7-21-09	12-22-12
53.	Williams, E. W.	1- 4-10	5-23-13
54.	Yokum, G. N.	9-14-05	6-20-13
55.	Osborn, L. L.	7-28-09	6-21-13
56.	Swain, N. J.	7-30-09	6-22-13
57.	Curtis, W.	9-22-09	6-25-13
58.	Hood, W. I.	10-21-09	6-26-13
59.	Collins, R. L.	3- 9-10	6-29-13
60.	Hendryx, W. J.	4-13-10	7- 1-13
61.	Shaw, D. C.	5- 5-10	7- 4-13
62.	Lange, G. W.	5-27-10	7- 5-13
63.	Northcutt, W. W.	6-20-10	7- 6-13
64.	Godney, R. E.	10-25-10	7-26-13
65.	Sellers, R.	5-26-03	8- 1-14
66.	Kneidler, A.	8- 5-06	8- 3-14
67.	Jost, W. S.	6-22-10	8- 6-14
70.	Weichlein, H. A.	3- 1-11	8-19-14
71.	Brown, H. R.	5-28-11	8-22-14
72.	Winkler, W. R.	4-25-11	7- 2-16

No.	Name	First Date of Service	Promoted to Conductor
73.	Duncan, V. R.	5-21-11	7- 2-16
74.	Bates, Ira	6-10-11	7- 3-16
75.	Snyder, E.	6-29-11	7- 3-16
76.	Dunlap, F. R.	7- 5-11	7- 5-16
77.	Emerson, H.	1-12-12	7- 5-16
78.	Berchold, C. L.	3-10-12	7- 7-16
79.	Wadsworth, L. E.	4- 5-12	7- 7-16
80.	Wilson, C. C.	4- 9-12	7- 7-16
81.	Metzler, W. L.	4-13-12	7- 8-16
82.	Cook, H. C.	4-22-12	7- 8-16
83.	Zimrick, J. A.	5-23-12	7-10-16
84.	Cordon, W. O.	12-28-06	7-10-16
85.	Cobb, G. W.	6-19-12	7-10-16
86.	Cobb, J. B.	8- 2-12	1-27-17
87.	Ruff, M.	8- 8-12	1-28-17
88.	Coffman, B. H.	8-17-12	1-29-17
89.	Briggs, E. E.	9- 4-12	1-29-17
90.	Hunsaker, O. O.	11-17-12	6-18-17
91.	Bond, L. C.	12-10-12	6-19-17
92.	Huber, S. W.	12-12-12	6-20-17
93.	Park, J. S.	12-14-12	6-25-17
94.	Brown, Z. C.	12-25-12	6-21-18
95.	Bowman, W. R.	1-20-13	6-24-18
96.	Curry, C. R.	2-17-13	6-25-18
97.	Gentry, R.	2-19-13	6-26-18
98.	Cordon, W. H.	2-23-13	6-28-18
99.	Renfro, G. T.	3- 5-13	6-29-18
100.	Huggerth, A. J.	3- 7-13	10-21-18
101.	Burton, W. E.	3-16-13	10-22-18
102.	Burnett, G. F.	3-23-13	10-23-18
103.	Bowman, J. W.	3-24-13	10-24-18
104.	Howe, W. J.	3-26-13	10-24-18
105.	Gray, Chas.	4-29-13	10-26-18
106.	Donaldson, M.	5- 1-13	10-27-18
107.	McDermott, C. K.	6- 8-13	10-20-18
108.	Hatch, E. G.	6-12-13	8-30-18
109.	Spencer, S. E.	8-27-13	8-24-19
110.	Thompson, M. F.	9- 3-13	10-24-19
111.	Taylor, J. O.	9- 5-13	1-23-20
112.	Earls, C. E.	9-29-13	1-24-20
113.	West, H. A.	10-17-13	1-25-20
114.	Talbott, C. K.	11- 1-13	1-28-20
115.	Hicks, W. J.	11- 5-13	1-30-20
116.	Coleman, J. W.	11-22-13	1-31-20
117.	Ross, H. M.	11-23-13	2- 1-20
118.	Brown, L. H.	12-26-13	2- 3-20
119.	Wilson, A. B.	3-20-14	2- 5-20
120.	Linn, J. N.	4- 7-14	2- 5-20
121.	Barber, S. M.	4-29-14	2- 8-20
122.	Roberts, E. J.	4-29-14	2- 9-20
123.	Hunsaker, R.	7-13-14	2-12-20
124.	Atterbury, M.	4-22-06	2-12-20
125.	Culp, E. A.	12-18-12	2-14-20
126.	Miller, C. G.	8-20-14	2-14-20
127.	Phillips, I. D.	2-10-15	2-15-20
128.	Kimmell, W. A.	12-12-12	2-15-20
129.	Head, O.	6-11-15	2-17-20
130.	Montgomery, F. C.	8-20-15	2-17-20
131.	Yokum, J. D.	6- 5-12	2-22-20
132.	Morian, W. A.	10-23-15	2-23-20
133.	Allison, R. R.	11-20-15	2-24-20
134.	Burnett, E.	5- 1-16	2-26-20
135.	Cavender, C.	5- 4-16	2-26-20
136.	Vanderhoff, A.	5- 8-16	2-27-20
137.	Nye, A. J.	5-23-16	2-28-20
138.	Curry, W. R.	6- 8-16	2-29-20
139.	Boydston, F. L.	6-21-16	7-21-23
140.	McNary, F. M.	7- 8-16	7-21-23
141.	Humphrey, G. L.	7-16-16	7-21-23
142.	McMahan, L. L.	8-18-16	8- 2-23
143.	McCracken, A. C.	9- 2-16	8-13-23
144.	Sandefer, C. E.	9- 2-16	8-14-23
145.	Cole, A. W.	9- 7-16	10-11-23
146.	Sanders, O. R.	9-21-16	10-12-23
147.	Phillips, A. A.	9-21-16	10-12-23
148.	Allen, R. E.	10-16-16	10-23-23
149.	Dickson, L. M.	10-24-16	10-23-23
150.	Rankin, R. A.	11- 5-16	10-31-23
151.	Koontz, S.	12- 5-16	10-31-23
152.	Ross, C. J.	12-28-16	4-11-24
153.	Meikle, J. F.	12-28-16	4-13-24

No.	Name	First Date of Service	Promoted to Conductor
154.	Bryan, D. L.	1-10-17	5-12-24
155.	Loshor, C. R.	8-22-13	5-16-24
156.	Johnson, D. W.	2-11-17	5-17-24
157.	Parker, E. M.	2-13-17	6- 6-24
158.	May, J. F.	4- 4-14	6-14-24
159.	Van Doozer, F. L.	8-21-13	4-18-36
160.	Bolter, R. J.	2-27-17	4-18-36
161.	Cornett, H. A.	3- 3-15	4-18-36
162.	Laughlin, P. E.	3- 3-17	4-18-36
163.	Michel, O. F.	3-12-17	4-21-36
164.	Grousbeck, P. C.	4- 2-17	4-21-36
165.	Skelly, C.	4-20-17	4-21-36
166.	Neighbors, H. H.	4-21-17	10-15-36
167.	Hanna, A. J.	9- 2-14	10-15-36
168.	Ward, T. Z.	5-12-17	10-15-36
169.	Busey, R. D.	5-18-17	10-15-36
170.	Joy, J. R.	6- 9-17	10-15-36
171.	Stahlman, D. C.	6-15-17	10-15-36
172.	Davey, C. E.	7-11-17	7- 6-37
173.	Burgoyne, M. A.	7-15-17	7- 6-37
174.	Ratcliff, J. A.	7-21-17	7-15-37
175.	Williams, T. S.	8-14-17	7-15-37
176.	Knox, W. J.	8-25-17	7-19-37
177.	Fox, C. L.	8-30-17	7-19-37
178.	Gilmore, C. A.	9-26-17	7-19-37
179.	Schulz, O. W.	10- 6-17	8-16-37
180.	Brand, F. F.	11- 5-13	8-16-37
181.	Hamilton, H. G.	11- 1-17	8-16-37
182.	Williams, L. A.	11- 3-17	8-16-37
183.	Stichler, S. M.	11-17-17	8-26-37
184.	Walker, C. E.	12- 4-17	8-26-37
185.	Meissner, R. W.	12- 4-17	9- 1-37
186.	Chase, H. C.	12-11-17	9- 1-37
187.	Phelps, C. H.	12-13-17	9- 1-37
188.	Hatfield, H. F.	12-22-17	9- 9-37
189.	Odell, E. N.	1-29-18	9-24-37
190.	Hess, G. H.	1-30-18	9-24-37
191.	Spray, C. L.	3-17-18	9-30-37
192.	Quenin, H. G.	4- 3-18	9-30-37
193.	Thompson, J. A.	2-17-14	10-15-37
194.	Hobbs, J. R.	5-25-18	10-21-37
195.	Wood, E. A.	5-30-18	10-21-37

Brakeman—Southern Pacific Co.

JULY 1, 1937

PORTLAND DIVISION

No.	Name	Passenger Date	Freight Date
1.	Snodgrass, R.	6-11-26	10-10-06
2.	Scruggs, H. E.	6- 1-26	1-25-13
3.	Nicholson, T. T.	6- 1-26	9-10-15
4.	Brown, C. C.	6- 1-26	12-21-16
5.	Snoddy, C. P.	6- 1-26	3- 8-17
6.	McMahan, Geo.	6- 1-26	3-31-17
7.	Wood, T. E.	6- 1-26	4-21-17
8.	Smith, H. L.	6- 1-26	6- 8-17
9.	Bishop, I. D.	6- 1-26	11- 5-17
10.	Mead, H. L.	6- 1-26	12- 5-17
11.	Cowles, F. L.	6- 1-26	5-21-18
12.	Maguire, W. N.	6- 1-26	5-24-18
13.	Calloway, B.	6- 1-26	6- 9-18
14.	Miller, O. J.	6- 1-26	7- 1-18
15.	O'Connell, J. D.	6- 1-26	7-22-18
16.	Parrish, B. A.	6- 1-26	9-17-18
17.	Richards, R. G.	6- 1-26	9-20-18
18.	McCarty, L. L.	6- 1-26	10-28-18
19.	Morton, J. R.	6- 1-26	10-29-18
20.	Nelson, A. W.	6- 1-26	11- 1-18
21.	Proll, J. H.	6- 1-26	11-19-18
22.	Ball, R. H.	6- 1-26	12-10-18
23.	Bacon, C. A.	6- 1-26	5-17-19
24.	Mathews, C. E.	6- 1-26	8- 8-19
25.	Reif, R. R.	6- 1-26	8-21-19
26.	Alf, A. A.	6- 1-26	8-26-19

No.	Name	Passenger Date	Freight Date	No.	Name	Seniority Date
27.	Royse, I. C.	6-1-26	8-27-19	107.	Inman, H. L.	June 12, 1926
28.	Nicholson, J. L.	6-1-26	12-23-19	108.	Koenig, J. F.	April 15, 1936
29.	Smith, W. B.	6-1-26	12-30-19	109.	Templeton, H. H.	April 15, 1936
30.	Dickey, A. L.	6-1-26	1-3-20	110.	Garrison, L. W.	April 17, 1936
31.	Hannappel, W.	6-1-26	1-6-20	111.	Healey, D. T.	April 22, 1936
32.	Carter, J. R.	6-1-26	1-9-20	112.	Main, J. W.	April 22, 1936
33.	Wright, B. M.	6-1-26	1-24-20	113.	McClure, B. H.	April 23, 1936
34.	Smail, L. J.	6-1-26	1-31-20	114.	Kendall, L. J.	April 29, 1936
35.	Miller, E. E.	6-1-26	2-5-20	115.	Rausch, R. F.	April 29, 1936
36.	Moench, W. H.	6-1-26	2-10-20	116.	Smith, G. E.	May 2, 1936
37.	Davis, E. W.	6-1-26	3-6-20	117.	Sedgwick, J. T.	May 2, 1936
38.	Burgoyne, L. F.	6-1-26	3-20-20	118.	Byrd, C. C.	May 2, 1936
39.	Bates, L. E.	6-1-26	4-19-20	119.	Richardson, G. J.	May 2, 1936
40.	Mathews, A. E.	6-1-26	4-21-20	120.	Faubion, S. S.	May 5, 1936
41.	Brown, B. A.	6-1-26	6-2-20	121.	Strickland, T. L.	May 7, 1936
42.	Jones, M. E.	6-1-26	6-15-20	122.	Johnson, J. A.	May 10, 1936
43.	Bolter, E. G.	6-1-26	6-20-20	123.	Milan, A. A.	May 12, 1936
44.	Berry, W. S.	6-1-26	7-6-20	124.	Johnson, G. L.	May 14, 1936
45.	Weiss, Wm.	6-1-26	7-22-20	125.	Montgomery, J. A.	Map 16, 1936
46.	Murdock, J. E.	6-1-26	7-30-20	126.	Balle, A. J.	June 15, 1936
47.	Laughlin, W. A.	6-1-26	7-31-20	127.	Conley, T. W.	June 16, 1936
48.	Cook, F. S.	6-1-26	8-1-20	128.	Whisman, W. T.	June 18, 1936
49.	Clow, A. R.	6-1-26	8-13-20	129.	Newton, C. M.	June 30, 1936
50.	Boone, D. B.	6-1-26	8-14-20	130.	Woolley, F. C.	July 1, 1936
51.	Paulson, W. H.	6-1-26	8-16-20	131.	Hamblin, E. V.	July 1, 1936
52.	Demmer, H. J.	6-1-26	8-28-20	132.	Parks, H. W.	July 1, 1936
53.	Lockhart, G.	6-1-26	9-3-20	133.	Horne, H. L.	July 4, 1936
54.	Urhin, C. T.	6-1-26	9-7-20	134.	Wimer, J. W.	Aug. 1, 1936
55.	Elbon, L.	6-1-26	9-15-20	135.	McAdams, H. L.	Aug. 13, 1936
56.	Douglas, S. S.	6-1-26	9-21-20	136.	Wood, C. J.	Aug. 14, 1936
57.	Strong, A. H.	6-1-26	9-24-20	137.	Bolin, G. D.	Aug. 25, 1936
58.	Robberding, W.	6-1-26	9-28-20	138.	Wynne, R.	Sept. 1, 1936
59.	Campbell, P. E.	6-1-26	10-6-20	139.	Lee, R. C.	Sept. 1, 1936
60.	Lehrbass, H. H.	6-1-26	10-7-20	140.	Metz, J. C.	Sept. 1, 1936
61.	Lewman, Z. J.	6-1-26	10-21-20	141.	Kabler, G. O.	Sept. 1, 1936
62.	Powers, M. D.	6-1-26	7-15-22	142.	Thomson, L. N.	Sept. 10, 1936
63.	Kriever, A. E.	6-1-26	8-3-22	143.	Woods, L. A.	Sept. 11, 1936
64.	Ranford, E. L.	6-1-26	8-24-22	144.	Moore, C. R.	Sept. 26, 1936
65.	Davis, M. G.	6-1-26	9-1-22	145.	Schwartz, R.	Oct. 2, 1936
66.	Allison, O. D.	6-1-26	9-4-22	146.	Brown, H. F.	Oct. 3, 1936
67.	Walker, C.	6-1-26	9-4-22	147.	Hearing, E. R.	Oct. 10, 1936
68.	Blenis, G. M.	6-1-26	9-9-22	148.	Gassman, W. L.	Nov. 3, 1936
69.	Chase, R. R.	6-1-26	9-14-22	149.	Joyce, G. M.	Nov. 3, 1936
70.	Yoakum, J. F.	6-1-26	9-22-22	150.	Seydell, L. H.	Nov. 8, 1936
71.	Carter, A. G.	6-1-26	9-23-22	151.	Clark, M. L.	Nov. 20, 1936
72.	Hinsdale, H. H.	6-1-26	9-26-22	152.	Rouf, J. H.	Dec. 31, 1936
73.	Daugherty, E. E.	6-1-26	9-27-22	153.	Hatch, R. E.	Feb. 5, 1937
74.	Fredrickson, H. F.	6-1-26	9-27-22	154.	Sears, R. J.	March 4, 1937
75.	Warner, C. D.	6-1-26	9-28-22	155.	Livengood, T. K.	March 13, 1937
76.	Stough, R. J.	6-1-26	10-9-22	156.	Voeller, L. A.	March 14, 1937
77.	Kalhar, R. D.	6-1-26	10-20-22	157.	McCormick, J. T.	March 17, 1937
78.	Bryan, L. D.	6-1-26	10-23-22	158.	Saby, O. B.	April 2, 1937
79.	Criteser, F. J.	6-1-26	10-25-22	159.	Murphy, C. H.	April 3, 1937
80.	Anderson, A. C.	6-1-26	1-24-23	160.	Syron, A. H.	April 7, 1937
81.	McDonough, A. D.	6-1-26	1-24-23	161.	Gray, E. C.	April 10, 1937
82.	Tate, W. B.	6-1-26	3-13-23	162.	Biddle, R. E.	April 14, 1937
83.	Tibbetts, K. N.	6-1-26	3-16-23	163.	Barnes, J. R.	April 14, 1937
84.	Scott, G. J.	6-1-26	4-4-23	164.	Welch, H.	April 15, 1937
85.	Smith, G. P.	6-1-26	4-10-23	165.	Hillman, M. S.	April 21, 1937
86.	Gregg, F. L.	6-1-26	4-16-23	166.	Middleton, J. W.	April 22, 1937
87.	Cheever, G. S.	6-1-26	4-20-23	167.	Olson, L. E.	April 28, 1937
88.	Davis, E. D.	6-1-26	4-25-23	168.	Jordon, M. J.	April 28, 1937
89.	Fullerton, R. M.	6-1-26	5-9-23	169.	Herndon, R. W.	April 30, 1937
90.	Hebard, S. L.	6-1-26	5-18-23	170.	Lytte, J. E.	May 3, 1937
91.	Zimmerman, L. C.	6-1-26	5-24-23	171.	Boyd, D. D.	May 4, 1937
92.	Emigh, W. E.	6-1-26	5-26-23	172.	Ward, D. A.	May 5, 1937
93.	Klum, L. R.	6-1-26	6-20-23	173.	Jeffreys, M. E.	May 24, 1937
94.	Moench, A. N.	6-1-26	6-25-23	174.	Saxton, C. K.	May 27, 1937
95.	Reynolds, C. D.	6-1-26	7-1-23	175.	English, W. J.	May 27, 1937
96.	Miller, F.	6-1-26	7-27-23	176.	Egberg, F. A.	June 2, 1937
97.	Mustoe, O. L.	6-1-26	8-11-23	177.	Denny, R. T.	June 3, 1937
98.	Pappel, W. F.	6-1-26	8-15-23	178.	McCowan, J.	June 5, 1937
99.	Joyce, G. E.	6-1-26	9-15-23	179.	Gage, W. L.	June 7, 1937
100.	Mend, G. C.	6-1-26	9-17-23	180.	Thorson, D. O.	June 8, 1937
101.	Horning, A. E.	6-1-26	10-20-23	181.	Dennis, E. B.	June 8, 1937
102.	Austin, B. M.	6-1-26	11-5-23	182.	Hanlon, F. T.	June 15, 1937
103.	Blair, V. C.	6-1-26	11-11-23	183.	Shipley, F. A.	June 23, 1937
104.	Lane, E. C.	6-1-26	5-20-24	184.	Sires, G. L.	June 28, 1937
105.	Bloom, H. L.	6-1-26	5-20-24	185.	Hardy, J. F.	June 30, 1937
106.	Parsons, J. H.	6-1-26	5-20-24	186.	Smith, T. J.	June 30, 1937
				187.	Anderson, G. B.	July 7, 1937
				188.	Knight, W. B.	July 9, 1937

No.	Name	Seniority	Date
189.	Tichenor, B. E.	July 12,	1937
190.	Barker, H. C.	July 13,	1937
191.	Nelson, P. K.	July 21,	1937
192.	Beal, R. G.	July 22,	1937
193.	Kemp, C. M.	July 22,	1937
194.	Stewart, T. O.	July 22,	1937
195.	Grimes, C. V.	July 23,	1937
196.	Hemphill, L. E.	July 30,	1937
197.	Scroggin, H. R.	July 31,	1937
198.	Wilson, P. C.	July 31,	1937
199.	Dixon, L. P.	Aug. 17,	1937
200.	Joseph, R. L.	Aug. 27,	1937
201.	Davis, H. J.	Sept. 10,	1937
202.	Smith, J. E.	Sept. 10,	1937
203.	Dawson, J. A.	Sept. 11,	1937
204.	Nylander, L. A.	Sept. 15,	1937
205.	Lehmann, E. W.	Sept. 21,	1937
206.	Pape, H. W.	Sept. 25,	1937
207.	DePaepae, A.	Oct. 1,	1937
208.	Sokolosky, H. A.	Oct. 5,	1937
209.	Packard, H. E.	Nov. 4,	1937

Engineers' Seniority Roster Southern Pacific Co.

January 1, 1937

PORTLAND DIVISION—

No.	Name	Seniority	Date
1.	GEP Paulson, J.	Nov. 16,	1891
2.	P Payton, E. J.	April 28,	1898
3.	P Dumphy, J. H.	Sept. 20,	1900
4.	P Laing, E.	Oct. 9,	1900
5.	P Edlund, G.	Jan. 18,	1901
6.	P Patrick, C. B.	April 3,	1901
7.	P Luster, T. E.	March 12,	1902
8.	P Reibel, O. F.	July 7,	1902
9.	P Woodson, J. L.	July 20,	1902
10.	P Driskill, R. T.	Feb. 1,	1904
11.	P Carpenter, H.	Aug. 1,	1904
12.	P Wright, R. D.	Oct. 1,	1904
13.	GEP Webber, C. O.	Nov. 17,	1905
14.	P Rohse, B. A.	Dec. 1,	1905
15.	GEP Stafford, J. L.	Dec. 1,	1905
16.	P Hume, J. C.	Dec. 1,	1905
17.	P McCarthy, A.	Dec. 1,	1905
18.	P Russell, B. F.	May 1,	1906
19.	P Zimmerman, J. A.	May 1,	1906
20.	P Waddell, H. C.	Aug. 3,	1906
21.	XP Faulkner, G. H.	Sept. 1,	1906
22.	GEP Schellenberg, W. F.	Sept. 1,	1906
23.	GEP Ryan, H. D.	Sept. 1,	1906
24.	GEP Strader, A.	Sept. 1,	1906
25.	P Bolter, G. T.	Sept. 1,	1906
26.	P Burt, W. G.	Oct. 1,	1906
27.	GEP Stoltz, J. D.	11- 3-00	
28.	P Scott, R. M.	1- 4-07	
29.	GEP Kirby, J. J.	3-10-01	
30.	P Morgan, B. F.	8-22-01	
31.	P Spallinger, A.	12-31-01	
32.	P Willis, S. R.	8-17-07	
33.	GEP Dininny, H. C.	1-30-02	
34.	P Kirk, J.	2- 3-02	
35.	P Bodley, H. S.	6- 1-00	
36.	GP McLaughlan, H. A.	11- 7-07	
37.	P Brown, J. H.	5-11-08	
38.	GP McCamish, H. B.	4-15-08	
39.	P McClung, C. H.	4-16-02	
40.	P Goettsche, A. C.	5-16-02	
41.	* Crouch, L. J.	11- 7-09	
42.	GP Ryan, B. F.	7- 6-09	
43.	P Schmidt, R.	8- 5-02	
44.	P Casey, T. J.	6-22-10	
45.	GP Wagner, A. D.	7-10-10	
46.	P Sharp, E. W.	8-11-02	
47.	* Lightfoot, W.	7-21-10	

No.	Name	Seniority	As Engineer
48.	GP Clow, F. M.		8- 8-10
49.	* Bailey, J. E.		9-13-10
50.	P Robertson, R. L.		10-17-10
51.	GEP Frost, G. P.		5- 8-11
52.	GEP Gonier, F. J.		2- 4-12
53.	P Simpson, H. L.	11- 6-02	5-18-12
54.	P DeWitt, W. S.	11-14-02	5-23-12
55.	P Wall, S. E.	5-10-04	7- 7-12
56.	GEP Johnson, F. L.	5-17-04	7- 8-12
57.	GEP Corbett, J. H.		8-13-12
58.	* Bolton, A. F.		12-21-12
59.	GEP Towers, C. L.		2-21-13
60.	P Truitt, G. I.	5-21-04	5-26-13
61.	P Weatherford, J. M.	5-23-04	6-16-13
62.	P McLane, O. E.	5-24-04	6-17-13
63.	GEP Thomas, W. L.		6-21-13
64.	P Mecum, L. J.	5-30-04	7- 5-13
65.	GEP McFadgen, J. W.		7-10-13
66.	P Blackmun, F.	6- 8-04	7-12-13
67.	* Rose, J. M.		7-12-13
68.	P Lovett, W. F.		7-15-13
69.	P Jacobson, G. C.		7-17-13
70.	P Trainer, J. F.	6-30-04	8- 7-13
71.	GP Richardson, M. A.	6-30-04	8- 7-13
72.	P Robertson, J. W.	7-21-04	8- 7-13
73.	* Cochran, E. C.	11- 4-04	8- 7-13
74.	GP Mercier, H. W.	6- 5-05	8- 7-13
75.	P Chambers, H. C.		8-23-13
76.	BEP Ward, J. B.		12-24-13
77.	P Moser, R. V.	6- 3-04	2-28-14
78.	P McGrew, F. L.	7-22-05	6-21-14
79.	P Willis, S. D.		7- 4-14
80.	GP Thomas, H. H.	8-18-05	8- 5-14
81.	GEP Frederikson, F.		5-26-16
82.	P Burgoyne, O.	8-21-05	6- 4-16
83.	GEP McCormack, A. W.	8-23-05	6- 7-16
84.	P Wimer, E.	9- 6-05	6-28-16
85.	P Lohr, B. F.	9-23-05	7-23-16
86.	GP Nelson, H.	12-22-05	9- 1-16
87.	P Trefren, J. M.	12-23-05	11- 9-16
88.	GEP Hosmer, C. O.	3-10-06	11-12-16
89.	* Staten, H. G.		1- 7-17
90.	P Hoffman, H. E.	5-14-06	1-15-17
91.	GEP Lempke, W. F.	5-15-06	2- 9-17
92.	GEP Howell, J. S.		2- 9-17
93.	GEP Robertson, R. C.	5-18-06	2-10-17
94.	GEP Boroughs, L.	5-31-06	2-12-17
95.	GEP Chamberlin, A. M.	5-31-16	2-13-17
96.	GEP Helbock, L. G.	10-23-05	6- 7-06
97.	* Clark, O. L.		4-15-17
98.	* Randall, H. L.		5-11-17
99.	GEP Mooney, H. N.	12-24-05	5-16-17
100.	P Rix, H. R.	6- 8-06	5-20-17
101.	GP McMillan, J. A.	7- 9-06	5-23-17
102.	GP Willis, E. E.	7- 9-06	5-24-17
103.	GEP Bridges, B. B.	4-20-06	6-15-17
104.	* Smith, O. J.		6-23-17
105.	* Payne, R. K.		7- 5-17
106.	P Thompson, S. F.	6-30-06	7- 6-17
107.	GP Kiesel, L. A.	10- 4-06	7-11-17
108.	GEP Cavey, G. E.	6-23-09	7-11-17
109.	GEP Denison, A. H.		7-25-09
110.	EP Wescott, F. E.		7- 5-06
111.	GP Lemmons, J.		7-31-09
112.	* Morgan, F. R.		7-22-17
113.	GP Wescott, J. H.		7-31-09
114.	GEP Burgess, D. E.	8- 1-09	11-16-17
115.	GEP Jost, F. J.		9-10-09
116.	GP Cundiff, J. F.	8- 3-09	11-18-17
117.	GEP Couch, H. V.		9-23-09
118.	GP Brandt, F. E.	8- 3-09	11-24-17
119.	GP Senders, E.	8-18-09	11-29-17
120.	* Walp, D. C.		3- 16-18
121.	* DeLong, E. C.		5- 8-18
122.	* Wood, C. W.		5-22-18
123.	GP Eifert, J. O.	8-19-09	6-27-18
124.	GP Eddings, G. W.	8-23-09	7-12-18
125.	GP Kanney, W. J.	9-23-09	1-18-10
126.	GEP Baltimore, F. P.		7-13-18
127.	GEP Adams, O. D.		3- 1-10
			7-24-18

No.	Name	Seniority Date		
		Switch Fireman	Road Fireman	Enginem
128.	GP Alexander, A. T.	10-7-09	4-27-10	8-7-18
129.	GP Schaffer, F.	10-18-09	5-13-10	8-7-18
130.	GEP Hensley, J. M.		8-8-18	8-8-18
131.	GP Kirk, W. C.	12-30-09	5-21-10	8-13-18
132.	P Towne, F. H.		5-27-10	8-18-18
133.	GP Ruitter, G. W.		6-1-10	8-18-18
134.	P Reddick, C. W.		6-16-10	8-25-18
135.	P Kenyon, R. A.	5-20-10	7-19-10	8-26-18
136.	† Baltimore, L. L.	5-20-10	7-24-10	8-26-18
137.	P Taylor, R. A.		7-24-10	10-10-18
138.	GP Read, D. L.	5-23-10	7-27-10	10-11-18
139.	GP Hauge, H. C.	10-26-09	5-18-10	7-12-19
140.	GP Crosley, P. R.	5-29-10	7-16-10	9-14-19
141.	GP Schlitz, J. J.	7-8-10	7-6-11	9-17-19
142.	GP Theobald, P. M.	7-19-10	7-7-11	9-17-19
143.	P Sickafosse, A. D.	7-26-10	7-20-11	9-22-19
144.	GP PaPlmer, F. B.	8-31-10	4-11-12	10-7-19
145.	GP Allen, M. S.	7-31-11	4-11-12	10-7-19
146.	GP Sorenson, A.		5-1-12	11-11-19
147.	GP Openshaw, H.	8-8-11	6-8-12	11-13-19
148.	P Shaddock, G. A.	5-16-12	6-8-12	11-14-19
149.	GEP McCalley, R. A.		6-25-12	11-14-19
150.	GP Gordon, R. M.	4-24-12	7-8-12	11-15-19
151.	GP Sayre, A. M.		11-26-19	11-26-19
152.	† Sawallia, B. B.		7-15-12	2-15-20
153.	P Spencer, A. C.	5-20-12	7-29-12	2-16-20
154.	GP Wilde, H. F.	6-8-12	9-7-12	2-22-20
155.	GP McCormack, N. E.		3-10-20	3-10-20
156.	GP Oakes, C. R.		9-5-11	3-10-20
157.	GP Hagelin, F.	7-26-12	10-10-12	3-20-20
158.	GP Vaughn, T. J.	8-1-12	11-8-12	3-21-20
159.	GP Timbers, B. F.	8-8-12	12-20-12	3-21-20
160.	GP Miller, H.	9-3-12	12-20-12	3-22-20
161.	GP Peterson, W.	9-4-12	12-22-12	3-29-20
162.	GP Campbell, B. W.	9-24-12	1-2-13	4-9-20
163.	GP Irwin, W. E.		2-19-13	4-10-20
164.	P Daugherty, S. J.	10-17-12	5-16-13	7-27-20
165.	GP Vanderwall, R.	12-17-12	6-16-13	7-27-20
166.	GP Long, G. E.	12-21-12	6-18-13	7-28-20
167.	P Hall, R. S.	4-5-13	6-23-13	8-10-20
168.	P Covert, L. L.	4-5-13	6-26-13	8-11-20
169.	GP Kraft, E. J.	4-7-13	6-30-15	8-11-20
170.	P Scanlon, F. K.	4-28-13	7-29-13	8-11-20
171.	GP Crockard, A. S.		7-10-13	8-11-20
172.	GP Hassman, G. A.		7-19-13	8-12-20
173.	P Ballard, R. R.	6-13-12	7-20-13	8-13-20
174.	P Look, A. A.	6-21-13	10-29-13	8-17-20
175.	P Johnson, H. P.	6-26-13	11-25-13	10-12-20
176.	P Lepschat, A. W.	7-2-13	1-17-15	10-15-20
177.	P Hays, C. L.	7-17-13	1-22-15	10-15-20
178.	P Wolck, F.		5-2-15	10-15-20
179.	P Walsh, J. E.	8-9-13	7-7-16	10-15-20
180.	P Chandler, H. A.	8-9-15	8-8-16	10-17-20
181.	P Stoddard, G. A.	9-1-15	8-27-16	10-28-20
182.	P Sawyer, R. H.	6-8-16	8-30-16	10-29-20
183.	P Tupper, W. L.	6-9-16	8-2-16	10-20-20
184.	P Wilson, R. H.		10-1-16	11-1-20
185.	GP Smith, E. D.	8-23-16	10-6-16	11-2-20
186.	P Miller, W. W.	6-24-16	10-6-16	11-3-20
187.	P Clancy, A. B.	7-3-16	10-14-16	11-3-20
188.	P Bridenstine, C. A.		6-20-13	5-28-21
189.	P Gonier, W. J.	3-6-13	6-21-13	5-28-21
190.	P Miller, H. R.	5-9-13	8-7-18	6-20-22
191.	P Sahli, R.	6-18-13	8-21-13	4-1-23
192.	Downing, D. L.	6-28-13	12-1-14	4-3-23
193.	Darrah, H. H.	8-26-16	10-25-16	5-20-23
194.	Young, J. H.	7-30-16	1-20-17	6-1-23
195.	Machen, C. A.	10-14-16	2-13-17	6-8-23
196.	Stahl, J.	10-23-16	2-16-17	6-24-23
197.	Sweeney, J. R.	1-20-17	2-26-17	7-1-23
198.	Troxel, O. F.	2-6-17	3-27-17	7-1-23
199.	Waldorf, F. A.	2-24-17	5-24-17	7-1-23
200.	Wescott, M. S.	3-2-17	5-26-17	7-12-23
201.	Hefner, W. C.	3-10-17	5-29-17	7-12-23
202.	DeWaal, C.	4-5-17	5-29-17	7-13-23
203.	Dunn, M. G.	5-6-17	6-1-17	7-13-23
204.	Wheeler, H. M.	5-29-17	7-6-17	9-2-23
205.	Weichlein, F. L.	10-6-16	2-9-17	12-7-23
206.	Johnson, E.	5-14-17	6-9-17	5-30-24
207.	Chambers, O. W.	5-20-17	6-10-17	7-19-24

No.	Name	Seniority Date		
		Switch Fireman	Road Fireman	Enginem
208.	Holmes, J.		6-13-17	7-19-24
209.	Lowrey, R. N.	5-24-17	6-16-17	7-21-24
210.	Wells, H. E.	5-27-17	6-16-17	7-10-24
211.	Butler, C. N.	5-20-17	7-10-17	8-27-36
212.	Collum, E. E.	5-30-17	7-11-17	8-29-36
213.	Spitulski, Z.	5-30-17	7-13-17	9-8-36
214.	Riedel, G. F.	6-15-17	7-17-17	9-8-36
215.	Mickel, C. E.	6-18-17	8-9-17	9-8-36
216.	Cereghino, W.	6-21-17	8-10-17	9-26-36
217.	Sanford, L. E.	7-5-17	9-15-17	9-27-36
218.	Ruitter, W. L.	7-5-17	9-15-17	9-28-36
219.	Riedel, C. J.		9-27-17	10-3-36
220.	Bigger, C. E.		9-28-17	10-3-36

NOTE: Symbol "G" designates qualified for Gas Motor Car Service.
 "P" " " " qualified for Passenger Service.
 "K" " " restricted to Branch Line Service.
 "GEP" " " qualified for Gas Elec. Motor Car Service.
 "†" " " restricted to Yd. Ser. after Oct. 1, 1918.

Road Fireman Seniority Roster Southern Pacific Co.

January 1, 1937

PORTLAND DIVISION

No.	Name	Seniority Date
1.	HP Nutting, F. L.	Sept. 29, 1917
2.	HP Robbins, H. H.	Oct. 22, 1917
3.	HP Parker, V. A.	Oct. 23, 1917
4.	HP Farwell, C. C.	Oct. 28, 1917
5.	HP Galvin, J. P.	Nov. 4, 1917
6.	HP Cole, W. L.	Nov. 5, 1917
7.	HP Moore, A. R.	Nov. 9, 1917
8.	HP Perry, V.	Nov. 9, 1917
9.	HP Sachtler, R. M.	Nov. 16, 1917
10.	HP Gale, L. A.	Nov. 19, 1917
11.	HP Gilmore, G. A.	Dec. 13, 1917
12.	HP McGregor, W. H.	Dec. 17, 1917
13.	HP Blevins, A.	Dec. 18, 1917
14.	HP Lloyd, J. M.	Dec. 22, 1917
15.	HP Griffith, G.	Jan. 2, 1918
16.	HP McGehey, A. W.	Jan. 3, 1918
17.	HP Hufner, W. B.	Feb. 25, 1918
18.	HP Smith, C. E.	March 1, 1918
19.	HP Griffith, J. H.	March 18, 1918
20.	HP Evans, M.	April 25, 1918
21.	HP McCarl, B. A.	April 30, 1918
22.	HP Baldwin, H. E.	May 2, 1918
23.	HP Hancock, H. B.	June 5, 1918
24.	HP Handley, A.	June 7, 1918
25.	HP McPherson, E. C.	June 8, 1918
26.	HP Meyer, C. A.	June 19, 1918
27.	HP Rice, C. S.	June 27, 1918
28.	HP Brower, H. R.	June 28, 1918
29.	HP Morse, H. A.	July 1, 1918
30.	HP Eddings, F. L.	July 2, 1918
31.	HP Hall, W. F.	July 10, 1918
32.	HP Donaldson, W. A.	Aug. 1, 1918
33.	HP Hensley, J. M.	Aug. 8, 1918
34.	HP Copeland, O. A.	Aug. 9, 1918
35.	HP Kroll, H. M.	Aug. 10, 1918
36.	HP Wells, R. D.	Aug. 14, 1918
37.	HP Hyde, W. E.	Aug. 19, 1918
38.	HP Wood, R. R.	Aug. 27, 1918
39.	HP Smith, G. D.	Aug. 28, 1918
40.	HP Spitulski, S.	Aug. 30, 1918
41.	HP King, F. K.	Sept. 14, 1918
42.	HP Fredericks, J. L.	Sept. 21, 1918
43.	HP Blanchard, A. W.	Sept. 24, 1918
44.	HP Muldoon, M. T.	Sept. 25, 1918
45.	HP Giebisch, A. E.	Sept. 28, 1918
46.	HP Miller, H. F.	Oct. 2, 1918

No.	Name	Seniority Date
47.	HP James, D. W.	Oct. 10, 1918
48.	P Welch, G. R.	Oct. 22, 1918
49.	HP Aplanaip, J.	Oct. 22, 1918
50.	HP Vallier, C. T.	Oct. 29, 1918
51.	HP Lindgren, D. C.	Nov. 9, 1918
52.	HP Wangeman, L. F.	Nov. 10, 1918
53.	HP Knuss, A. R.	Dec. 1, 1918
54.	HP McLaughlin, O. K.	Dec. 1, 1918
55.	HP Mills, J. K.	Dec. 1, 1918
56.	HP Metzen, J.	Dec. 1, 1918
57.	HP Stein, L. A.	Dec. 1, 1918
58.	HP Strickland, W. A.	Dec. 1, 1918
59.	HP Van Riper, F. H.	Dec. 1, 1918
60.	HP Morgan, W. J.	Dec. 1, 1918
61.	HP Sinnar, L.	Dec. 1, 1918
62.	HP Adams, C. L.	Dec. 1, 1918
63.	HP Rundel, H. D.	Dec. 1, 1918
64.	HP Rainwater, A. L.	Dec. 1, 1918
65.	HP Bruckman, W. C.	Dec. 1, 1918
66.	HP Britt, H. S.	Dec. 1, 1918
67.	HP Basford, G. C.	Dec. 1, 1918
68.	HP Bentley, J. E.	Dec. 1, 1918
69.	HP Crowder, R. C.	Dec. 1, 1918
70.	HP Rauch, R.	Dec. 1, 1918
71.	H Vincent, E. P.	Dec. 1, 1918
72.	HP Hammer, M. E.	Dec. 1, 1918
73.	HP Galvin, M. P.	Dec. 1, 1918
74.	HP Barger, L. R.	Dec. 1, 1918
75.	HP Stephens, A.	March 23, 1919
76.	HP Burke, J. A.	March 23, 1919
77.	HP May, E. D.	July 23, 1919
78.	HP Earl, W. E.	July 27, 1919
79.	HP McQuaid, J. D.	Aug. 4, 1919
80.	HP Fredeen, G. W.	Aug. 12, 1919
81.	HP Lutz, C. F.	Aug. 12, 1919
82.	HP Kral, R. E.	Aug. 14, 1919
83.	HP Bewley, F. A.	Aug. 20, 1919
84.	HP Flannery, L. F.	Aug. 23, 1919
85.	HP Churchill, F. A.	Aug. 23, 1919
86.	HP Boyes, C. L.	Aug. 26, 1919
87.	HP Hughes, B.	Aug. 26, 1919
88.	HP Dahlgren, C. G.	Aug. 26, 1919
89.	HP Helbig, V. V.	Sept. 14, 1919
90.	HP Cook, P. M.	Nov. 15, 1919
91.	HP Sayre, A. M.	Nov. 26, 1919
92.	HP McIvers, W. E.	Jan. 10, 1920
93.	HP Schmaling, F. R.	Jan. 13, 1920
94.	HP Blevins, E. C.	Jan. 21, 1920
95.	HP Laurens, J. I.	Jan. 24, 1920
96.	HP Thomas, W. D.	Jan. 24, 1920
97.	HP Protheroe, V. D.	Jan. 28, 1920
98.	HP Kendall, J. H.	Jan. 29, 1920
99.	HP McMullen, S. A.	Jan. 29, 1920
100.	HP Hand, E. E.	Feb. 6, 1920
101.	HP Hefin, I. E.	Feb. 7, 1920
102.	HP House, J. W.	Feb. 10, 1920
103.	HP Vaughn, C. A.	Feb. 20, 1920
104.	HP Bell, A. E.	Feb. 24, 1920
105.	HP Kelly, H. G.	Feb. 27, 1920
106.	HP Barrow, F. B.	March 1, 1920
107.	HP Miller, N. W.	March 3, 1920
108.	HP Pippy, H. D.	March 4, 1920
109.	HP McCormack, N. E.	March 10, 1920
110.	HP Tretheway, J. A.	March 13, 1920
111.	HP Crawford, N. T.	March 13, 1920
112.	HP Morgan, D.	March 20, 1920
113.	HP Frve, J. E.	March 24, 1920
114.	HP Gildow, O. O.	March 25, 1920
115.	HP Walters, G. H.	March 27, 1920
116.	HP Ruth, L. W.	April 3, 1920
117.	HP Cruson, C. L.	April 4, 1920
118.	HP McCarty, L. S.	April 13, 1920
119.	HP Williams, Roy.	April 22, 1920
120.	HP Crosby, C.	May 5, 1920
121.	HP Thayer, V.	June 8, 1920
122.	HP Fox, H. R.	July 7, 1920
123.	HP Smith, M. E.	July 10, 1920
124.	HP Barker, W. L.	July 10, 1920
125.	HP McBride, G. W.	July 10, 1920
126.	HP McIntyre, H.	July 16, 1920
127.	HP Lind, C. A.	July 16, 1920

No.	Name	Seniority Date
128.	HP Hamel, J. D.	July 17, 1920
129.	HP Dussenberre, C. S.	July 23, 1920
130.	HP Tracey, R. E.	July 29, 1920
131.	HP Tipton, G. M.	Aug. 23, 1920
132.	HP Losee, A. D.	Sept. 2, 1920
133.	HP Main, L. J.	Sept. 3, 1920
134.	HP Forbes, A. D.	Sept. 4, 1920
135.	HP Prell, R. A.	Sept. 12, 1920
136.	HP Blevins, F. R.	Sept. 21, 1920
137.	HP Henry, P. W.	Sept. 23, 1920
138.	HP Erickson, C. J.	Sept. 25, 1920
139.	HP Peterson, I. S.	Sept. 30, 1920
140.	HP Parmele, W. R.	Sept. 30, 1920
141.	HP Andrus, O. T.	Oct. 2, 1920
142.	HP Sahli, J. E.	Sept. 4, 1922
143.	HP Barnard, R.	Sept. 6, 1922
144.	HP Utterback, H. P.	Sept. 11, 1922
145.	HP Westby, H. S.	Sept. 12, 1922
146.	HP Layton, O.	Sept. 28, 1922
147.	HP Kenyon, B. R.	Oct. 1, 1922
148.	HP Allen, W. P.	Oct. 3, 1922
149.	HP Dornhecker, G. C.	Nov. 7, 1922
150.	HP Fretwell, S. A.	Nov. 7, 1922
151.	HP Best, L. M.	April 8, 1923
152.	HP Sullivan, J.	April 11, 1923
153.	HP High, C.	April 11, 1923
154.	HP Astell, G.	April 15, 1923
155.	HP Ingram, J. C.	May 19, 1923
156.	HP Rutledge, K. E.	May 24, 1923
157.	HP Gotcher, G.	May 24, 1923
158.	HP Grant, T. A.	May 28, 1923
159.	HP Hess, P.	June 22, 1923
160.	HP Hausken, R. E.	June 22, 1923
161.	HP Kline, E. M.	June 24, 1923
162.	HP Plymale, F. G.	June 4, 1923
163.	HP Demaris, J. E.	July 9, 1923
164.	HP Shellito, W. F.	July 9, 1923
165.	HP Smith, E.	July 20, 1923
166.	HP Lemoine, O. A.	Sept. 7, 1923
167.	HP Carter, R. G.	Sept. 8, 1923
168.	HP Dorr, L. L.	Sept. 12, 1923
169.	HP Barnett, E. D.	Sept. 13, 1923
170.	HP Wilson, C. W.	March 7, 1924
171.	HP McQueen, A. M.	March 10, 1924
172.	HP Frost, E.	April 2, 1924
173.	HP Booth, G. W.	April 23, 1924
174.	HP Thomas, R.	Aug. 11, 1936
175.	HP Starr, V. I.	Aug. 12, 1936
176.	HP Robbins, C. C.	Aug. 12, 1936
177.	HP Elkins, C. R.	Aug. 12, 1936
178.	HP Bland, J. V.	Aug. 13, 1936
179.	HP Hatfield, L. H.	Aug. 15, 1936
180.	HP Bryant, M.	Aug. 25, 1936
181.	HP Patterson, F. W.	Aug. 25, 1936
182.	HP Cox, W. O.	Aug. 27, 1936
183.	HP Lomax, R. G.	Aug. 29, 1936
184.	HP Mertz, J. W.	Sept. 21, 1936
185.	HP Winter, H. A.	Sept. 25, 1936
186.	HP Kilborn, A. W.	Sept. 28, 1936
187.	HP Lopuson, A.	Oct. 1, 1936
188.	HP Sommerholder, P. R.	Oct. 1, 1936
189.	HP Kendall, K. A.	Oct. 1, 1936
190.	HP Hughes, H. H.	Oct. 1, 1936
191.	HP Kirk, R. E.	Oct. 2, 1936
192.	HP Kelso, T. M.	Oct. 2, 1936
193.	HP Reilly, J. A.	Oct. 3, 1936
194.	HP Walcher, N. C.	Oct. 3, 1936
195.	HP Whitsett, R. H.	Oct. 10, 1936
196.	HP McGehee, G. E.	Oct. 13, 1936
197.	HP Tucker, J. T.	Oct. 18, 1936
198.	HP Tasnady, M.	Oct. 25, 1936
199.	HP Jennings, C. C.	Oct. 30, 1936
200.	HP Chase, D.	Nov. 17, 1936
201.	HP Lambert, D. F.	Nov. 19, 1936
202.	HP Rauw, R. R.	Nov. 28, 1936
203.	HP McCracken, C. H.	Dec. 10, 1936

NOTE: Symbol "H" Designates qualified M L & Inside Steam Hostler.

"P" Designates qualified Passenger Service.

Hostler's Seniority Roster Southern Pacific Co.

January 1, 1937

PORTLAND DIVISION

No.	Name	Seniority Date
1.	Laurens, W. C.	Nov. 3, 1903
2.	Farrell, Steve	Sept. 3, 1910
3.	Dornhecker, F. N.	Oct. 7, 1912
4.	Thompson, G. E.	Oct. 15, 1913
5.	Everton, J. W.	Feb. 19, 1916
6.	Moell, H. F.	May 5, 1916
7.	Teffts, F. B.	June 24, 1916
8.	Montgomery, W. F.	Jan. 9, 1917
9.	Norton, F. R.	March 5, 1917
10.	Nielsen, A. C.	Aug. 12, 1917
11.	Blaylock, R. A.	Aug. 30, 1917
12.	Van Nurden, W.	Aug. 31, 1917
13.	Vallier, A. A.	Oct. 4, 1917
14.	Stanton, C. G.	Jan. 7, 1918
15.	Faubion, H. R.	June 17, 1918

Hostler Helper's Seniority Roster Southern Pacific Co.

January 1, 1937

PORTLAND DIVISION

No.	Name	Seniority Date
1.	Gray, G. O.	Sept. 25, 1911
2.	Uttinger, O. E.	Oct. 1, 1917
3.	McFarlane, W. A.	Dec. 5, 1918
4.	Elliott, J. M.	Sept. 26, 1919
5.	Williams, D.	March 1, 1920
6.	Emmons, M. K.	May 6, 1920
7.	Dailey, F. F.	Dec. 24, 1920
8.	Willis, C. H.	Aug. 9, 1922
9.	Mansur, J. B.	Sept. 15, 1922
10.	Darnell, T. C.	July 15, 1923
11.	McKenzie, B.	Nov. 1, 1923
12.	Hannaford, G. E.	March 13, 1924

Consolidated Seniority Roster Of Yardmen Southern Pacific Co.

PORTLAND DIVISION—

No.	Name	Seniority Date
1.	Christiansen, W. E.	April 29, 1901
2.	Koenig, J. G.	Nov. 1, 1906
3.	Jackson, R. W.	July 15, 1908
4.	Harris, H. D.	Sept. 16, 1909
5.	Williams, R. D.	June 27, 1910
6.	Browning, E. O.	Dec. 10, 1910
7.	Palmer, W. E.	Aug. 1, 1911
8.	Moore, J. H.	Aug. 5, 1912
9.	Fitzsimmons, R. W.	Sept. 3, 1912
10.	Voegtlin, J.	Oct. 10, 1914
11.	Hurst, L. A.	April 20, 1916
12.	Brotherton, B. L.	July 17, 1916
13.	Evans, W. W.	May 16, 1917
14.	Wickman, F. E.	June 27, 1917

No.	Name	Seniority Date
15.	Wilson, A. S.	June 14, 1918
16.	Ryan, E. W.	Jan. 23, 1918
17.	Haley, E. C.	May 27, 1918
18.	Love, W. S.	June 2, 1919
19.	Messman, G.	July 1, 1919
20.	Brown, F. L.	Jan. 4, 1920
21.	Berkey, S. A.	Feb. 2, 1920
22.	Van Hovenberg, J. D.	April 1, 1920
23.	Little, P. K.	April 4, 1920
24.	Koontz, A. J.	April 12, 1920
25.	Wheeler, C. J.	April 12, 1920
26.	Hall, O. E.	April 12, 1920
27.	Williams, H. T.	April 12, 1920
28.	Smith, D. T.	April 13, 1920
29.	Locke, D.	April 19, 1920
30.	Wride, C.	April 19, 1920
31.	Michael, R. A.	April 19, 1920
32.	Hastay, W. H.	April 19, 1920
33.	Hickethier, Wm.	April 21, 1920
34.	Behringer, H. H.	April 25, 1920
35.	Doughty, S. E.	April 27, 1920
36.	Thurber, A. E.	April 28, 1920
37.	Copeland, J. A.	April 28, 1920
38.	Dowart, W. B.	April 29, 1920
39.	Rawn, E. M.	May 3, 1920
40.	Harrington, A. L.	May 6, 1920
41.	Nielsen, M. C.	May 7, 1920
42.	King, H. M.	May 12, 1920
43.	Oderick, T. V.	June 4, 1920
44.	Mann, C. T.	June 5, 1920
45.	Pape, H.	June 27, 1920
46.	McCutcheon, M. M.	July 16, 1920
47.	Logan, F. A.	July 20, 1920
48.	Fitzgerald, C. M.	July 28, 1920
49.	Mason, A. H.	Aug. 4, 1920
50.	Snitil, R. J.	Sept. 3, 1920
51.	Tuttle, B. H.	Sept. 21, 1920
52.	Ware, R. E.	Nov. 13, 1920
53.	Leete, G. J.	May 21, 1921
54.	Cotter, G. E.	April 8, 1922
55.	Tuttre, E. S.	July 30, 1922
56.	McKown, J. B.	Sept. 21, 1922
57.	Blew, H. Y.	March 10, 1923
58.	Polock, W. H.	March 15, 1923
59.	Sweeney, R. L.	April 1, 1923
60.	Howe, G.	April 15, 1923
61.	McLaughlin, L. V.	May 21, 1923
62.	Smelser, W.	June 2, 1923
63.	O'Northam, A. J.	June 2, 1923
64.	Deputy, W. A.	June 8, 1923
65.	Murphy, E. J.	June 23, 1923
66.	Free, E. J.	July 3, 1923
67.	Meyers, W. P.	Aug. 23, 1923
68.	Fleming, H. R.	Aug. 29, 1923
69.	Montgomery, B. G.	Oct. 18, 1923
70.	Porter, F. J.	Oct. 24, 1923
71.	Burdick, L. A.	Nov. 22, 1923
72.	Robb, E.	Nov. 26, 1923
73.	Plunkett, T. F.	Jan. 7, 1924
74.	Gallagher, F. A.	Jan. 15, 1924
75.	McWorter, W. B.	March 18, 1924
76.	Herring, O. F.	March 24, 1924
77.	Munholland, A. E.	April 10, 1924
78.	Boykin, H. G.	Sept. 15, 1924
79.	Nagle, H. J.	Oct. 29, 1924
80.	Brown, J. M.	April 29, 1925
81.	Pettingrew, J. E.	July 28, 1925
82.	Riggs, J. D.	July 28, 1925
83.	Lynds, I. E.	Jan. 28, 1925
84.	Morrison, W. L.	April 11, 1925
85.	McRea, J. A.	April 25, 1925
86.	Thomason, N. L.	May 8, 1925
87.	Wolfrom, H. L.	May 21, 1925
88.	Oglvie, R. E.	July 13, 1925
89.	Lovett, D. W.	Oct. 29, 1925
90.	Betty, W. H.	Nov. 30, 1925
91.	Williamson, F. R.	Dec. 5, 1925
92.	Chapman, J. R.	Jan. 10, 1926
93.	Hosford, G. F.	Jan. 17, 1926
94.	Quinn, C. D.	Jan. 30, 1926
95.	McRae, D.	Jan. 30, 1926
96.	Thomas, F. A.	April 10, 1926
97.	Mizera, C.	April 11, 1926

No.	Name	Seniority Date
98.	Leach, J. E.	April 15, 1926
99.	Estes, B. S.	April 27, 1926
100.	Shipman, J. T.	May 6, 1926
101.	Inglis, F. E.	May 8, 1926
102.	Casey, R. G.	May 20, 1926
103.	Gill, C. K.	May 25, 1926
104.	Renfro, J. H.	June 2, 1926
105.	Trosper, M. R.	June 13, 1926
106.	Boykin, D. P.	June 30, 1926
107.	Winchell, H. C.	July 10, 1926
108.	Dalton, C. L.	Sept. 1, 1926
109.	Radabaugh, G. P.	Oct. 1, 1926
110.	Boyle, H. C.	Oct. 9, 1926
111.	McNeil, C. L.	Oct. 23, 1926
112.	Hasse, E. H.	Oct. 28, 1926
113.	Perrin, K.	Feb. 8, 1927
114.	Frakes, F. E.	April 6, 1927
115.	Schlenker, J. J.	April 13, 1927
116.	Ketchum, F. H.	Oct. 1, 1927
117.	Ostrander, V. L.	Sept. 22, 1927
118.	DeWaide, G.	Jan. 14, 1929
119.	Heitkemper, G. S.	Jan. 29, 1929
120.	Ervikson, N. C.	March 20, 1929
121.	O'Connor, W. J.	April 9, 1929
122.	Robinette, H. D.	April 23, 1929
123.	Caldwell, O. W.	May 1, 1929
124.	Mosman, M. F.	May 17, 1929
125.	Cline, C.	May 21, 1929
126.	Weldy, L. A.	May 25, 1929
127.	Walker, A. J.	June 11, 1929
128.	Hagemeister, H. F.	July 19, 1929
129.	Raynolds, A.	Aug. 23, 1929
130.	Pitts, J. R.	Aug. 24, 1929
131.	Leslie, J. H.	Sept. 16, 1929
132.	Lehman, E. A.	Nov. 20, 1935
133.	Rhodes, L. H.	Jan. 16, 1936
134.	Weaver, L. W.	March 10, 1936
135.	McDowell, E. M.	March 23, 1936
136.	*Tuttle, R. L.	April 15, 1936
137.	*Hastrich, J. H.	April 15, 1936
138.	*Wheeler, C. G.	April 22, 1936
139.	*Humble, J. E.	April 22, 1936
140.	*Covalt, F. W.	April 22, 1936
141.	*Tarilton, A. F.	April 23, 1936
142.	*Enfield, G. W.	April 29, 1936
143.	*Humphreys, R. W.	May 1, 1936
144.	*Tarilton, W. E.	May 1, 1936
145.	*Dawe, R. F.	May 4, 1936
146.	*Haworth, H. G.	May 4, 1936
147.	*Doving, L. R.	May 13, 1936
148.	*Hall, E. L.	May 30, 1936
149.	*Hanna, A. J.	June 6, 1936
150.	*Minnich, C. T.	June 6, 1936
151.	*Cavender, N. C.	June 6, 1936
152.	*Moore, R. E.	June 11, 1936
153.	Gentry, P. L.	June 18, 1936
154.	Thorson, T. O.	June 26, 1936
155.	O'Brien, R. T.	July 2, 1936
156.	Porter, F. O.	July 2, 1936
157.	Low, H. B.	July 2, 1936
158.	Lichenwalter, E. R.	July 11, 1936
159.	Worden, G. B.	July 27, 1936
160.	Allen, T.	Aug. 1, 1936
161.	Peterson, D. A.	Aug. 12, 1936
162.	Cairns, W. F.	Aug. 14, 1936
163.	Levins, J. O.	Aug. 17, 1936
164.	Mobley, W. E.	Aug. 19, 1936
165.	Eastman, C. E.	Aug. 28, 1936
166.	Abel, R. E.	Sept. 2, 1936
167.	Snyder, C.	Sept. 3, 1936
168.	Armes, C. R.	Sept. 3, 1936
169.	McCluskey, T. W.	Sept. 23, 1936
170.	Oakes, F. S.	Sept. 26, 1936
171.	Gentykow, R. S.	Sept. 28, 1936
172.	Ryan, L. C.	Oct. 24, 1936
173.	Pallardy, A. R.	Oct. 27, 1936
174.	O'Rien, H. A.	Oct. 28, 1936
175.	Chase, J. E.	Oct. 29, 1936
176.	Quesenberry, J. N.	Nov. 2, 1936
177.	Shipman, R. D.	Nov. 6, 1936
178.	Abendroth, T. W.	Nov. 10, 1936
179.	Converse, L. S.	Nov. 14, 1936
180.	McMillan, C. D.	Nov. 20, 1936

No.	Name	Seniority Date
181.	Mills, F. L.	Nov. 24, 1936
182.	Dawe, H. V.	Dec. 14, 1936
183.	Smith, B. F.	Jan. 23, 1937
184.	Kropp, M. J.	Jan. 23, 1937
185.	Woolery, C. V.	March 3, 1937
186.	Renfro, R. S.	Jan. 5, 1937
187.	Woldt, B. C.	Jan. 22, 1937
188.	Corcoran, D. R.	Jan. 25, 1937
189.	Vaughn, E. G.	Jan. 27, 1937
190.	Hoban, T.	Jan. 30, 1937
191.	Thomas, K. W.	Jan. 31, 1937
192.	Custer, G. O.	April 8, 1937
193.	Horack, H. A.	April 10, 1937
194.	Fariola, A.	April 10, 1937
195.	Christie, W. D.	April 10, 1937
196.	Strong, E. E.	April 16, 1937
197.	Kane, J. C.	April 23, 1937
198.	Griffin, C. R.	April 27, 1937
199.	Trapp, E. B.	April 30, 1937
200.	Taylor, R. A.	May 10, 1937
201.	Koenig, C. W.	May 12, 1937
202.	Hayes, J. F.	May 12, 1937
203.	Rothschild, L. M.	May 15, 1937
204.	Little, R. K.	May 27, 1937
205.	Faust, W. B.	June 3, 1937
206.	Wirth, L. L.	June 8, 1937
207.	Harrington, L. R.	June 9, 1937
208.	Mikkelson, C. C.	June 9, 1937
209.	Drury, F. L.	July 3, 1937
210.	Hawkes, L. J.	July 3, 1937
211.	Frowhart, W. C.	July 3, 1937
212.	Hayes, H. C.	July 15, 1937
213.	Jensen, C.	July 19, 1937
214.	Swanson, D. N.	July 19, 1937
215.	Matthieson, H. J.	July 29, 1937
216.	Taylor, T. R.	July 21, 1937
217.	Hodda, W. A.	July 22, 1937
218.	Watson, R. W.	July 23, 1937
219.	Zancolli, A. A.	July 31, 1937
220.	McLaggan, E. R.	Aug. 2, 1937
221.	Shields, J. W.	Aug. 7, 1937
222.	Kuschke, A. F.	Aug. 11, 1937
223.	Bagasson, A. C.	Aug. 11, 1937
224.	Allen, L. E.	Aug. 12, 1937
225.	Gibson, H. L.	Aug. 17, 1937
226.	Dinehart, R. E.	Aug. 22, 1937
227.	Pick, L. F.	Aug. 27, 1937
228.	Robinson, K. W.	Sept. 3, 1937
229.	Berg, R. V.	Sept. 16, 1937
230.	Burgett, C. L.	Oct. 1, 1937
231.	Richardson, F. A.	Oct. 10, 1937
232.	Tribe, W. H.	Oct. 22, 1937

*Newly employed yardmen qualified from students.

UNION STATION GARAGE

ONE BLOCK FROM UNION STATION

**GREASING, STORAGE,
GENERAL REPAIRS**

WILL W. HOOD, PROP.

625 N. W. HOYT ST., BROADWAY TO SIXTH

PHONE BROADWAY 4192

A New Store For MEN

For the convenience of the man in a hurry (and who isn't?) we present a new store for men complete in one section of our store. The very finest selection of clothing and furnishings (as usual) are now available in easily accessible and attractive surroundings.

FURNISHINGS — First Floor
CLOTHING — Second Floor
SPORTING GOODS—Mezz

Lipman Wolfe's

Boyd's Coffee

Uniformly Good

Ask for it at your Favorite Restaurant

Importers and Roasters
of Fine Coffees



1336 S. W. 2nd Ave. B Roadway 5679
Portland, Oregon

remember!

Whether items are Advertised or not

FOR **Quality
Assortments
Value
Service**

*It pays to buy at
Portland's Own Store*

Meier & Frank Co.

FIFTH, SIXTH, MORRISON AND ALDER
PORTLAND'S OWN STORE

A STRONG BANK

125 Millions
in Resources



4 BRANCHES IN PORTLAND
S. E. GRAND AVE. AT ALDER PHILADELPHIA AVE. & JERSEY
UNION AVE. AT KILLINGSWORTH MILWAUKIE AVE. & POWELL
18 OTHER OREGON BRANCHES

ALBANY	LA GRANDE	PENDLETON
ASTORIA	MCMINNVILLE	REDMOND
EUGENE	MEDFORD	ROSEBURG
GRANTS PASS	MT. ANGEL	SALEM
JUNCTION CITY	ONTARIO	ST. HELENS
KLAMATH FALLS	OREGON CITY	THE DALLES

You can Bank at the Main Bank or any
of our Branches by MAIL

The
United States National Bank
Broadway and Sixth, at Stark, Portland.

Member Federal Deposit Insurance Corporation

... If it's for your home

SHOP POWERS FIRST

FOR FURNITURE —

IT PAYS!

For more than 72 years .
The Furniture BUY WORD
in Oregon has been "If it's
for your home . . . SHOP
POWERS FIRST . . . IT PAYS!

The Powers Furniture Com-
pany was established in 1866.
Today this firm is the oldest
exclusive, specializing furni-
ture store in Oregon. An or-
ganization that specializes in
furnishing and servicing home
. . . nothing else . . . surely
the best place to buy things
for your home. Be smart, be
thrifty . . . Buy Your Furniture
From a Furniture Store . . . but
SHOP POWERS FIRST . . .
IT PAYS!



The Store That Saves
You Money

POWERS FURNITURE CO.

MAIN STORE
Third & Yamhill

BRANCH
39th & Sandy

OREGON DIVISION—2ND DISTRICT
PORTLAND TO UMATILLA, ORE. AND BRANCHES
SENIORITY LIST—CONDUCTORS
Revised as of July 1, 1937

No.	Name	Conductor	Brakeman	Yard Helper
1.	Freeman, W. M.	1- 6-05		
2.	Boyd, T. M.	7-22-05		
3.	Dalrymple, A. E.	9- 2-05		
4.	Fisk, C. A.	1- 6-06		
5.	Alexander, C. J.	9-10-07		
6.	Dalrymple, W. A.	9-12-07		
7.	Gilbertson, C. A.	9- 1-09	10-31-06	
8.	Potter, M. E.	9-14-09	4-20-07	
9.	Bender, E.	7-10-10	9- 9-07	
10.	Hamlin, J. L.	8-10-10	10-24-07	
11.	Holzappel, H.	6-17-12	12-22-06	
12.	Coventon, J. A.	6-30-12	7-12-11	
13.	Waters, W. B.	10-15-12	9-23-07	
14.	Orr, W. E.	5- 6-13	10- 2-07	
15.	Searls, W. B.	6-14-13	10- 8-10	
16.	Clark, T. C.	10- 1-13	11- 4-09	
17.	Schumacher, M.	12-18-13	11-10-09	
18.	Boyle, L. C.	7- 8-15	4-11-10	
19.	McGowan, O. C.	7-13-15	6-28-10	
20.	Toomey, D. E.	8-29-15	8-23-10	
21.	Whitwood, S. B.	3-15-16	11- 7-10	
22.	Chisam, R. C.	3-21-16	12- 4-15	
23.	McCarthy, W. C.	6-19-16	4-20-12	3- 1-23
24.	Livingston, R. R.	7-12-16	3-25-16	3- 1-23
25.	Beardsley, J.	12-20-16	3- 3-09	3- 1-23
26.	Manning, B. J.	5-16-17	9- 3-15	3- 1-23
27.	Bartmess, J. W.	5-17-17	5-28-12	3- 1-23
28.	Mosier, E. E.	5-18-17	7-24-12	3- 1-23
29.	Young, H. A.	6-10-19	2-20-13	3- 1-23
30.	Cadwell, W.	6-12-19	2-20-13	3- 1-23
31.	Williams, W. P.	1-29-20	3-31-13	3- 1-23
32.	Nelson, A. W.	2- 1-20	4- 4-13	3- 1-23
33.	Mickelson, P.	2-16-20	9-19-18	3- 1-23
34.	Waldon, J.	2-17-20	4-21-13	3- 1-23
35.	Taylor, A. C.	2-19-20	5-21-13	3- 1-23
36.	Dann, J. H.	2-19-20	9-30-18	3- 1-23
37.	Young, G. C.	4- 4-20	6- 1-13	3- 1-23
38.	Mosier, E. D.	9-17-21	6- 2-13	3- 1-23
39.	Clements, J. C.	9-17-21	8- 5-20	3- 1-23
40.	Bollons, A. J.	9-17-21	6-30-13	3- 1-23
41.	Bloomer, J. F.	9-26-22	5-24-15	3- 1-23
42.	York, R. A.	9-26-22	9-15-21	3- 1-23
43.	Jackson, A. L.	10-11-22	6- 2-15	3- 1-23
44.	Stingle, E. V.	10-12-22	6-27-15	3- 1-23
45.	Stevens, H. E.	10-17-22	7- 8-15	3- 1-23
46.	Broderson, C. R.	7-21-28	9- 8-12	3- 1-23
47.	Kenny, T. V.	7-21-28	5-29-15	3- 1-23
48.	Kelley, J. A.	8- 7-28	10- 7-15	3- 1-23
49.	Davis, H. R.	2- 5-29	9-30-15	3- 1-23
50.	Hobbs, F. D.	9-13-35	9-19-12	3- 1-23
51.	Clulow, J. B.	10- 2-35	2-14-16	3- 1-23
52.	Piercey, E. D.	10- 3-35	4-27-16	3- 1-23
53.	Carson, T. J.	2-28-36	5- 9-16	3- 1-23
54.	Pothour, G.	2-29-36	6-19-16	3- 1-23
55.	Curl, H. J.	3- 3-36	4-19-17	3- 1-23
56.	Willis, E. A.	3- 4-36	4-20-17	3- 1-23
57.	Taylor, J. A.	3- 5-36	4-24-17	3- 1-23
58.	O'Leary, P. J.	3- 6-36	5- 3-17	3- 1-23
59.	Sacher, R.	3- 9-36	5-28-17	3- 1-23
60.	Williams, J. P.	3-10-36	6- 5-17	3- 1-23
61.	Farr, E. F.	3-11-36	6- 8-17	3- 1-23
62.	Harris, J. W.	3-12-36	6-27-17	3- 1-23
63.	Hall, H. H.	3-18-36	11-21-17	3- 1-23
64.	Beardsley, C. H.	6- 6-37	5-12-18	3- 1-23
65.	Swanser, B. A.	6-20-37	5-17-18	3- 1-23
66.	DeVaney, E. G.	6-20-37	6-19-18	3- 1-23
67.	Spivey, W. F.	7-18-37	7-27-18	3- 1-23
68.	Robinson, C. R.	7-18-37	10-30-18	3- 1-23
69.	Hendricks, H.	8-21-37	7-20-18	3- 1-23
70.	St. Marie, E. A.	8-21-37	8- 8-19	3- 1-23
71.	Bartlett, C. R.	8-22-37	8-15-19	3- 1-23
72.	Bender, W. E.	8-22-37	8-25-19	3- 1-23
73.	Roberts, F. G.	9- 6-37	1-21-20	3- 1-23
74.	Leppert, R. H.	9- 6-37	1-27-20	3- 1-23

UNION PACIFIC RAILROAD COMPANY
OREGON DIVISION—1ST DISTRICT
PORTLAND TO SEATTLE & BRANCHES
SENIORITY LIST—BRAKEMEN

Revised to July 1, 1937

No.	Name	Freight		Yard Helper
		Brakeman	Passenger Brakeman	
1.	Bradley, J. A.	3-15-10		3- 1-23
2.	Trevelchen, W.	10-23-12		3- 1-23
3.	Dickeiser, J.	5-22-13		3- 1-23
4.	Hall, C. A.	6- 2-16		3- 1-23
5.	Estes, M. H.	6- 2-18		3- 1-23
6.	Smart, W. A.	8-11-18		3- 1-23
7.	Penney, R. B.	9-18-18		3- 1-23
8.	Jett, C. D.	11- 1-18		3- 1-23
9.	Ross, S. O.	11-17-19		3- 1-23
10.	Young, G. Claude	5-28-20		3- 1-23
11.	Leithe, P. A.	6- 1-20	4-22-13	3- 1-23
12.	White, R. B.	6- 1-20	7-18-16	3- 1-23
13.	Chittester, A. R.	8-17-20		3- 1-23
14.	Michael, E. E.	1-13-23		3- 1-23
15.	Fynes, M. J.	4-16-23		4-16-23
16.	Meligan, E. E.	6-11-23		6-11-23
17.	Cooper, W.	11-16-23		11- 6-23
18.	Deeks, K. C.	2-18-26		2-18-26
19.	Naismith, W. A.	7-28-26		7-28-26
20.	Mears, H.	7-31-26		7-31-26
21.	Lacey, E. E.	8- 3-26		8- 3-26
22.	Elmquist, H. E.	8-16-26		8-16-26
23.	Shirer, F. A.	8-19-26		8-19-26
24.	Brown, K. E.	9- 1-26		9- 1-26
25.	Greene, R. C.	9-16-26		9-16-26
26.	Watson, E. H.	3- 4-27		3- 4-27
27.	Vincent, B. A.	5-11-28		5-11-28
28.	Reese, H. J.	5-21-28		5-21-28
29.	Phillips, D.	5-22-28		5-22-28
30.	O'Hearn, W. E.	8- 7-28		8- 7-28
31.	Marsh, F. W.	8-10-28		8-10-28
32.	Rawson, E. A.	8-13-28		8-13-28
33.	Weatherall, H. O.	8-22-28		8-22-28
34.	Whitney, S. W.	8- 1-29		8- 1-29
35.	Stanley, W.	8-10-29		8-10-29
36.	Persall, E. L.	8-20-29		8-20-29
37.	DeWitt, H.	10-22-29		10-22-29
38.	Wilson, L. R.	11- 5-29		11- 5-29
39.	Chasteen, J. M.	11-12-29		11-12-29
40.	Albright, L. E.	2-17-36		2-17-36
41.	Edwards, A. D.	4- 1-36		
42.	Spurgeon, L. D.	7-25-36		
43.	Read, E. H.	7-25-36		
44.	Pleasant, G. D.	8- 3-36		
45.	Dalrymple, S. A.	8- 3-36		
46.	Penney, C. B.	8- 3-36		
47.	McInnis, J. P.	8-27 36		
48.	Burnett, F.	9-25-36		
49.	Hatton, C. P.	9-30-36		
50.	Harper, R. E.	9-30-36		
51.	Boyce, J. W.	10-17-36		
52.	Barkman, W. E.	2- 8-37		
53.	McNulty, W. A.	2- 9-37		
54.	Neat, R. L.	2- 9-37		
55.	Naismith, W. J. A.	4- 6-37		
56.	Gutschow, W. L.	4- 8-37		
57.	Mann, W. S.	4-10-37		
58.	Crites, R. D.	4-11-37		

UNION PACIFIC RAILROAD COMPANY
OREGON DIVISION—2ND DISTRICT
PORTLAND TO UMATILLA AND BRANCHES
SENIORITY LIST—BRAKEMEN

Revised as of July 1, 1937

No.	Name	Freight		Yard Helper
		Brakeman	Passenger Brakeman	
1.	Bread, R. V.	7-22-10		3- 1-23
2.	Wilkinson, A.	1-21-16		3- 1-23
3.	Gillilan, C. L.	6-18-16		3- 1-23
4.	George, J. H.	8-20-16		3- 1-23
5.	Hoover, E.	12-19-17		3- 1-23
6.	Biggs, W. E.	12-20-17		3- 1-23
7.	Philpot, L. A.	4-22-18		3- 1-23

8.	Ebi, O. C.	5-13-18		3- 1-23
9.	Lewis, E. R.	5-14-18		3- 1-23
10.	Hendricks, H.	7-20-18		3- 1-23
11.	Spivey, W. F.	7-27-18		3- 1-23
12.	Johnson, T. E.	8-30-18		3- 1-23
13.	Thompson, W. P.	9-10-18		3- 1-23
14.	Dunn, W. P.	10-28-18		3- 1-23
15.	Dunn, H. H.	10-29-18		3- 1-23
16.	Robinson, C. R.	10-30-18		3- 1-23
17.	Ste. Marie, E. A.	8- 8-19		3- 1-23
18.	Bartlett, C. R.	8-15-19		3- 1-23
19.	Bender, W. E.	8-25-19		3- 1-23
20.	Roberts, F. G.	1-21-20		3- 1-23
21.	Holzapfel, W.	1-21-20		3- 1-23
22.	Leppert, R. H.	1-27-20		3- 1-23
23.	Glover, G. E.	3-27-20		3- 1-23
24.	Gillilan, J. D.	6- 1-20	1-26-07	3- 1-23
25.	Stull, W. E.	6- 1-20	7- 1-07	3- 1-23
26.	Kreamer, E. W.	6- 1-20	2-17-08	3- 1-23
27.	Matthews, F. E.	6- 1-20	8-23-09	3- 1-23
28.	Siddons, A. E.	6- 1-20	9-12-09	3- 1-23
29.	Gault, W. H.	6- 1-20	4- 8-10	3- 1-23
30.	Hailey, J. B.	6- 1-20	6- 1-10	3- 1-23
31.	Walsh, E. T.	6- 1-20	3-20-13	3- 1-23
32.	Perry, J. O.	6- 1-20	9-22-13	3- 1-23
33.	Burnside, G.	6- 1-20	6-17-15	3- 1-23
34.	Tobin, P. G.	6- 1-20	11-17-17	3- 1-23
35.	Reeves, R.	6- 1-20	4-10-18	3- 1-23
36.	Adamson, R.	6- 1-20	5-15-20	3- 1-23
37.	Peters, O.	6-14-20		3- 1-23
38.	Lund, A. W.	7-10-20		3- 1-23
39.	Lewis, R. R.	8-16-20		3- 1-23
40.	Klock, H. E.	8-20-20		3- 1-23
41.	Swartz, J. O.	8-16-21		3- 1-23
42.	Lee, C. A.	8-22-21		3- 1-23
43.	Capps, D. B.	9-15-21		3- 1-23
44.	Zehner, A. C.	10- 4-21		3- 1-23
45.	Magorian, W. F.	12- 6-21		3- 1-23
46.	McPherson, W. A.	12- 9-21		3- 1-23
47.	Banta, R. L.	12-13-21		3- 1-23
48.	Dunn, H. L.	1-10-22		3- 1-23
49.	Harris, T. W.	6-14-22		3- 1-23
50.	Moon, J. R.	8- 2-22		3- 1-23
51.	Beveridge, D.	5-25-23		
52.	Martin, F. T.	6-25-23		
53.	Thomas, R. W.	8- 7-23		
54.	Harper, M.	8-14-23		
55.	Smith, K. E.	9- 1-23		
56.	Duvall, J. W.	9-12-23		
57.	Kelley, E. B.	10-16-23		
58.	Clendenning, W. H.	10-29-23		
59.	Fagan, D.	8-18-24		
60.	Thatcher, A. M.	8-18-24		
61.	Kunsmann, W. J.	8-18-24		
62.	Avery, H.	10-14-24		
63.	Culp, C. C.	9- 2-25		
64.	Fowler, S. A.	9- 8-25		
65.	Newton, M. V.	9- 7-26		
66.	Sayre, L. T.	10-14-26		
67.	Grimes, J. H.	10-15-26		
68.	Rickard, R. L.	11- 4-26		
69.	Thompson, T. G.	8- 4-27		
70.	Bratton, J. T.	8- 9-27		
71.	McMullen, D.	8-20-27		
72.	McGraw, V. L.	9- 6-27		
73.	Downs, E. E.	7-26-28		
74.	Cowherd, W. W.	9-26-28		
75.	Brown, M.	6- 1-29		
76.	Jones, H. A.	7- 5-29		
77.	Bies, D. L.	7- 8-29		
78.	Geiger, A. W.	7- 9-29		
79.	Williams, C. E.	7-12-29		
80.	Holmes, H. C.	7-27-36		
81.	Kensington, W. E.	7-27-36		
82.	Repp, J.	7-29-36		
83.	McCambridge, O. W.	7-29-36		
84.	Klink, T. O.	7-29-36		
85.	St. Thomas, W. A.	8- 3-36		
86.	McInnes, J. P.	8- 3-36		
87.	Fraser, H. E.	8- 3-36		
88.	Raycraft, J. E.	8-24-36		
89.	Holzapfel, R. G.	8-24-36		
90.	McLaughlin, C. L.	8-24-36		
91.	Stewart, L. N.	8-25-36		

92.	Dunlap, G. L.	9- 1-36
93.	Peterson, W. J.	9- 1-36
94.	Lacey, E. E., Jr.	9- 3-36
95.	Holycross, S. L.	9- 3-36
96.	Sweeney, R. J.	9- 3-36
97.	Gutschow, it. J.	9- 3-36
98.	Goodnight, H. W.	9-11-36
99.	Paist, G. E.	9-21-36
100.	Pattee, F. M.	9-21-36
101.	Cross, J. F.	9-26-36
102.	Fairless, C. R.	10- 1-36
103.	Sweeney, G. E.	10-12-36
104.	Upton, G. M.	10-12-36
105.	Klock, R. B.	10-12-36
106.	Healy, J. M.	10-12-36
107.	Ford, R. E.	10-12-36
108.	Seely, C.	10-12-36
109.	Gustafson, R. W.	10-12-36
110.	Walsh, P. W.	1-22-37
111.	Roberts, L. H.	1-28-37
112.	Woodard, C. J.	1-28-37
113.	Jenkins, M. G.	1-28-37
114.	Hayes, J. F.	2- 5-37
115.	Schultz, G. D.	2- 8-37
116.	Callahan, C. E.	2- 8-37
117.	Capps, W. H.	2- 8-37
118.	Deardorff, L. H.	8- 8-37
119.	Ebelmesser, R. L.	2- 8-37
120.	Mix, H. E.	2-13-37
121.	Allen, S. S.	2-13-37
122.	Chapman, J. F.	3-10-37
123.	Applegate, L. C.	3-10-37
124.	Jones, D. F.	8-10-37
125.	Crites, R. D.	6- 3-37
126.	Turner, D. G.	10- 3-37

UNION PACIFIC RAILROAD COMPANY
OREGON DIVISION—1ST DISTRICT
PORTLAND TO SEATTLE AND BRANCHES
SENIORITY LIST—ENGINEERS

Revised as of July 1, 1937

No.	Name	Promoted	Employed	Fireman
1.	Davis, F. M.		10-30-08	
2.	Brookes, E. P.		1- 1-10	Re-employed
3.	Pugh, M. P.		1- 1-10	
4.	Doran, W. T.		1-22-10	
5.	Batey, C. H.		1-24-10	
6.	McLean, R. A.		3-23-10	
7.	Fry, R. L.	4- 8-10		1- 1-10
8.	Chesbro, C. E.		5- 7-10	
9.	Shinn, C. E.	6- 7-17		1- 1-10
10.	Sweem, C.	6- 8-17		4-18-10
11.	Nelson, A. R.	7- 9-17		4-22-10
12.	Drake, W. A.	10-16-17		5- 2-10
13.	Thompson, S. S.	9- 6-18		6- 1-10
14.	Hewitt, T. W.	10- 7-18		6- 9-10
15.	Blanchard, C. G.	10- 7-18		6-16-10
16.	Ames, F. R.	10- 7-18		8-19-10
17.	Phillips, E. L.	11-12-18		8-28-10
18.	Corle, P.	1- 7-19		9- 1-10
19.	Neggerson, E.	9-17-20		10- 7-10
20.	Gilliam, E.	12-23-20		11-19-10
21.	Jones, F. H.	12-23-20		12- 1-10
22.	Wood, E.	12-24-20		6- 1-11
23.	Hendrix, C. J.	6-10-29		6- 7-11
24.	Doran, R. D.	6-10-29		4-15-13

UNION PACIFIC RAILROAD COMPANY
OREGON DIVISION—2ND DISTRICT
PORTLAND TO UMATILLA AND BRANCHES
SENIORITY LIST—ENGINEERS

Revised as of July 1, 1937

No.	Name	Promoted	Employed	Fireman
1.	Wilkes, M. P.	9-13-99		8- 4-94
2.	Fenton, I. J.	10-14-04		10- 5-99
3.	Farley, E. P.	9- 7-05		9-10-00
4.	Smith, J. N.	9-20-05		10-22-00
5.	Shearer, H. T.	4-15-06		6- -01
6.	Bibelhausen, W.	5- 5-07		5-17-02
7.	Morgan, L.	10-27-07		8-23-03

8.	Sutton, J. W.		9-23-04	
9.	Denny, H. V.	11- 2-09		9-29-05
10.	Keane, J.	2-20-10		8- 2-05
11.	Launtz, H. F.		6- 6-10	
12.	Illingworth, P. L.	6-24-10		10-18-04
13.	Carter, E. H.	8-15-10		7-23-06
14.	Scott, E. F.	11-22-12		5-23-07
15.	Adams, E. B.	2-19-16		9-16-07
16.	Hager, C. F.	3-22-16		11- 4-08
17.	Poole, L. M.	4-11-16		2- 2-09
18.	Egan, C. W.		9-15-16	
19.	Garretson, L. F.	5- 5-17		4-24-09
20.	Murphy, M. J.	5-10-17		5-31-09
21.	Hopper, F. J.	5-28-17		7-31-09
22.	Brumbach, V. E.	6-10-17		8- 9-09
23.	Sheffer, O. W.	6-29-17		9-16-09
24.	DeHaven, L. J.	7- 1-17		9-18-09
25.	Templeton, J. E.	7-26-19		9-18-09
26.	Hinkle, O. F.	10-15-19		10- 6-09
27.	Niva, A.	10-28-19		10-23-09
28.	Siegenthaler, F. W.	12-21-19		10-30-09
29.	Homelson, P. J.	12-25-19		11- 7-09
30.	Hayden, J. C.	12-29-19		4- 4-10
31.	Cunningham, A.	1-25-20		6-20-10
32.	Statzer, A. C.	2- 1-20		9- 5-10
33.	Reed, R. J.	2- 1-20		12-27-10
34.	Griffin, E. W.	2- 9-20		4-26-11
35.	Smith, W. F.	2- 9-20		4-29-11
36.	Freund, J. F.	2-11-20		8- 9-11
37.	Benn, I. L.	2-14-20		9-25-12
38.	Williams, W. H.	2-19-20		11-23-12
39.	Reiman, E. D.	2-19-20		7-20-13
40.	Blythe, G. T.	2-19-20		8- 9-13
41.	Boyd, E. W.	2-20-20		10- 4-13
42.	Kasaberger, J. J.	11-24-20		9-22-10
43.	Goins, E.	12-23-21		1-15-16
44.	Morast, F. M.	12-24-21		1-17-16
45.	Rorick, J. T.	12-25-21		1-18-16
46.	Crow, J. O.	8-26-22		2- 9-16
47.	Feldman, W. C.	8-26-22		2-13-16
48.	Rumgay, T. L.	9-13-23		9-10-16
49.	Eaton, F. E.	9-13-23		10-30-16
50.	Williams, E. E.	1-17-25		10- 3-16



Harry Copeland

Clothing for
The Well Dressed Man

\$15 NICELY TAILORED
ALL SIZES
AND MODELS

\$20

ALL WOOL
LATEST STYLES **\$25**
AND FABRICS

A Perfect Fit or Your
Money Back

Copeland's

515 S. W. 4th Ave.
Opposite Circle Theatre

UNION PACIFIC RAILROAD COMPANY
OREGON DIVISION—2ND DISTRICT
PORTLAND TO UMATILLA AND BRANCHES

SENIORITY LIST—FIREMEN

Revised as of July 1, 1937

No.	Name	Promoted	Employed	Fireman
1.	Pazina, J.		5-31-17	Re-employed
2.	Brinkman, P. D.	6- 2-17		
3.	Raymond, E. E.		6- 3-17	
4.	Bronson, E. D.		6-10-17	
5.	Dellis, G. J.	6-23-17		
6.	Shaw, S. T.	7-28-17		
7.	Hulse, B. T.		9-18-17	Re-employed
8.	Penman, P. E.	10- 2-17		
9.	Price, L. R.		10-19-17	
10.	May, E. C.		12-10-17	
11.	Woodruff, H. W.	12-24-17		
12.	Wright, C. G.	4-30-18		
13.	Muck, J. E.		8- 5-18	
14.	Burnett, W. E.	11- 1-18		
15.	Norton, W. L.	11-27-18		
16.	Burrell, W. E.	1-13-19		
17.	Martin, B. M.	9-27-19		
18.	Curran, F. B.	10- 1-19		
19.	Slocum, L. J.	10-30-19		
20.	Stitt, C.	10-31-19		
21.	Caldwell, E. C.		11- 3-19	
22.	Forney, O. M.		12-21-19	
23.	Smith, E. E.		1-26-20	
24.	Harvey, R. W.	1-29-20		
25.	Peterson, J. E.		8-17-20	
26.	Smithe, P. L.		8-25-20	
27.	Ford, R. J.		8- 9-21	
28.	Key, C.		8- 9-21	
29.	Gale, W.		8-29-21	
30.	Tracey, L. S.		8-29-21	
31.	Douthit, J. N.		9- 3-21	
32.	Schwerdfager, W. L.		9-16-21	
33.	Caldwell, M. P.		9-21-21	
34.	Bailey, H. L.		11- 7-21	
35.	Edwards, W.		11-22-21	
36.	Norwood, O. M.		12- 1-21	
37.	Conlon, E. J.		12- 2-21	
38.	Lindstrom, H.		12-22-21	
39.	Jones, K. E.		6-18-22	
40.	Hibbs, I. L.		8-26-22	
41.	Nelson, W. L.		9- 3-22	Re-employed
42.	Luce, T. L.		9- 1-23	
43.	Decious, B.		9- 1-23	
44.	Welter, P. J.		10-13-23	
45.	Woods, W. P.		10-22-23	
46.	Rutledge, J. C.		9-13-25	
47.	Kelso, T. M.		9- 4-26	Re-employed
48.	Martin, L. L.		9- 5-26	Re-employed
49.	Whiting, C. A.		8- 8-27	
50.	Wheeler, A. L.		8-19-27	
51.	Nave, J. D.		8-24-27	
52.	Shellitto, W. F.		9-22-28	
53.	Cross, J. F.		10-20-28	
54.	Osborne, D. B.		1- 6-37	
55.	Wales, J.		2- 4-37	
56.	Smith, H. G.		2- 5-37	
57.	Hirte, R. L.		2- 5-37	
58.	Dalrymple, J. D.		2- 6-37	
59.	George, L.		2- 6-37	
60.	Swallia, J. H.		2-17-37	
61.	Bryant, F. M.		2-21-37	
62.	Mix, H. W.		2-27-37	
63.	McWhortle, C. W.		3- 1-37	
64.	Smith, E. E.		3- 1-37	
65.	Vogel, A.		3- 3-37	
66.	Ringo, W. N.		3- 3-37	
67.	Rook, A.		3-18-37	
68.	Hale, R.		3-25-37	

UNION PACIFIC RAILROAD COMPANY
OREGON DIVISION—2ND DISTRICT
ALBINA—THE DALLES—UMATILLA
SENIORITY LIST—SWITCH ENGINEERS

Revised as of July 1, 1937

No.	Name	Promoted	Employed	Fireman
1.	Veatch, C. E.	3-15-02		9-26-99
2.	Twigger, E. B.	10- 1-02		6-14-00
3.	Davis, E. S.	9-19-05		12-23-00
4.	Crooks, J. S.	6-22-06		3- 6-06
5.	McCormack, F.	9-17-09		
7.	Moomaw, J. W.	9- 5-10		
6.	Gates, L. V.		12-30-09	
8.	Finn, J. W.		11-15-10	Re-employed
9.	Davis, C. C.		8-13-12	Re-employed
10.	McNurien, F. C.	8-17-13		5- 5-15
11.	Willison, J. E.	9-28-13		7- 1-10
12.	O'Connell, J. M.	4-26-16		7-14-09
13.	Carr, F.	6-15-16		10- 2-12
14.	Harvey, L. J.	11-15-16		10-19-12
15.	Chandler, F. K.		5- 3-17	
16.	Gessler, J. R.	6-25-17		
17.	Connell, J. W.		6-28-17	
18.	Klinker, A. R.		10-10-17	
19.	Minnick, H. R.	12-19-17		8-11-13
20.	Walsh, D. M.	4-19-18		
21.	Jackson, D. W.		4-22-18	
22.	Park, G. C.		7-28-18	7-28-18
23.	Anderson, M. A.	8- 9-18		11-14-14
24.	Stump, A. J.		8-21-18	8-21-18
25.	Butler, T. J.	11-10-18		12-19-15
26.	Rainey, A. E.	8-17-19		2- 9-16
27.	Wilson, C. L.	10-25-19		3-20-16
28.	Sturman, H. A.	12- 2-19		3-30-16
29.	Tuttle, W. M.	12- 2-19		4-23-16
30.	Mallon, J.	2-15-20		9-16-16
31.	Nugent, W. R.		3-17-20	
32.	Wedekind, W. F.	9-29-20		8-24-16
33.	Smith, C. T.	9-27-21		5- 6-17
34.	Allen, J. A.	9-30-21		6-16-17
35.	Wood, W. A.	10- 3-23		8-25-17
36.	Davis, S. W.	10-13-23		10-12-17
37.	Parrett, G. H.	10-13-23		12- 4-17
38.	Crosthwaite, C. W.	10-14-23		12-15-17
39.	Mode, H. S.	10-14-23		1- 3-18
40.	Stephens, J. A.	9- 4-27		4-12-18
41.	Caldwell, W. W.	9- 4-27		6- 6-18
42.	Read, M.	9- 4-27		6-20-18
43.	Edie, V. G.	9- 1-29		8-11-19
44.	Bushenville, M. J.	9- 1-29		8-15-19
45.	Blakeley, G.	9- 1-29		8-16-19
46.	Smith, L. J.	9- 1-29		8-22-19

UNION PACIFIC RAILROAD COMPANY
OREGON DIVISION—2ND DISTRICT
ALBINA—THE DALLES—UMATILLA
SENIORITY LIST—SWITCH FIREMEN

Revised as of July 1, 1937

No.	Name	Promoted	Employed
1.	Berry, J. E.	8-24-19	
2.	Billings, D. L.	11-16-19	
3.	King, R. T.	2- 3-20	
4.	Conover, G. S.		2- 8-20
5.	Richerds, C. E.	4- 6-20	
6.	Becker, F. H.	7- 6-20	
7.	Sauer, F. A.	7-31-20	
8.	Hamilton, F. A.	8- 6-20	
9.	Amato, J. P.	8-16-20	
10.	Hagenbucher, C.	8-18-20	
11.	Lindsay, J. J.	8-25-20	
12.	Harris, S. P.	9-30-20	

UNION PACIFIC RAILROAD COMPANY
OREGON DIVISION—2ND DISTRICT
ALBINA—THE DALLES—UMATILLA
SENIORITY LIST—SWITCH FIREMEN

Revised as of July 1, 1937

No.	Name	Promoted	Employed	Fireman
1.	Berry, J. E.	8-24-19		
2.	Billings, D. L.	11-16-19		
3.	King, R. T.	2- 3-20		
4.	Conover, G. S.		2- 8-20	
5.	Richerds, C. E.	4- 6-20		
6.	Becker, F. H.	7- 6-20		
7.	Sauer, F. A.	7-31-20		
8.	Hamilton, F. A.	8- 6-20		
9.	Amato, J. P.	8-16-20		
10.	Hagenbucher, C.	8-18-20		
11.	Lindsay, J. J.	8-25-20		
12.	Harris, S. P.	9-30-20		
13.	Kenny, W. L.	9-21-22		
14.	Cutshall, C.	10- 6-22		
15.	Childers, A.		8-22-23	
16.	Clairnorne, J. R.		9-27-23	
17.	McCoy, G. N.		10-19-23	
18.	Rilea, C. R.		10-17-24	
19.	Brown, H. N.		10-19-24	
20.	Fidler, T. W.	8-31-26		
21.	Brown, L. R.		9-22-26	
22.	VanValin, E.		8-16-27	
23.	Smith, I. L.		8-19-27	
24.	McAllister, J. F.	9- 2-27		
25.	Drummond, C. W.	9-16-27		
26.	Laub, T. F.	8- 9-29		
27.	Raycraft, J. E.	8- 9-29		
28.	Brower, L. T.	8-12-29		
29.	Ranes, T. E.	8-13-29		
30.	Brannock, C. E.	8-13-29		
31.	Hohensee, W. H.	8-20-29		
32.	Neylon, W. J.	8-23-29		
33.	Devaney, W. F.	8-29-29		
34.	Kurtz, G. W.	8-29-29		

UNION PACIFIC RAILROAD COMPANY
OREGON DIVISION—2ND DISTRICT
ALBINA—THE DALLES—UMATILLA
SENIORITY LIST—SWITCH ENGINEERS

Revised as of July 1, 1937

No.	Name	Promoted	Employed	Fireman
1.	Veatch, C. E.	3-15-02		9-26-99
2.	Twigger, E. B.	10- 1-02		6-14-00
3.	Davis, E. S.	9-19-05		12-23-00
4.	Crooks, J. S.	6-22-06		3- 6-06
5.	McCormack, F.	9-17-09		
6.	Gates, L. V.		12-30-09	
7.	Moomaw, J. W.	9- 5-10		
8.	Finn, J. W.		11-15-10	Re-employed
9.	Davis, C. C.		8-13-12	Re-employed
10.	McNurlen, F. C.	8-17-13		5- 5-15
11.	Willison, J. E.	9-28-13		7- 1-10
12.	O'Connell, J. M.	4-26-16		7-14-09
13.	Carr, F.	6-15-16		10- 2-12
14.	Harvey, L. J.	11-15-16		10-19-12
15.	Chandler, F. K.		5- 3-17	
16.	Gessler, J. R.	6-25-17		
17.	Connell, J. W.		6-28-17	
18.	Klinker, A. R.		10-10-17	
19.	Minnick, H. R.	12-19-17		8-11-13
20.	Walsh, D. M.	4-19-18		
21.	Jackson, D. W.		4-22-18	
22.	Park, G. C.		7-28-18	7-28-18
23.	Anderson, M. A.	8- 9-18		11-14-14
24.	Stump, A. J.		8-21-18	8-21-18
25.	Butler, T. J.	11-10-18		12-19-15
26.	Rainey, A. E.	8-17-19		2- 9-16
27.	Wilson, C. L.	10-25-19		3-20-16
28.	Sturman, H. A.	12- 2-19		3-30-16
29.	Tuttle, W. M.	12- 2-19		4-23-16
30.	Mallon, J.	2-15-20		9-16-16
31.	Nugent, W. R.		3-17-20	
32.	Wedekind, W. F.	9-29-20		8-24-16
33.	Smith, C. T.	9-27-21		5- 6-17
34.	Allen, J. A.	9-30-21		6-16-17
35.	Wood, W. A.	10- 3-23		8-25-17
36.	Davis, S. W.	10-13-23		10-12-17
37.	Parrett, G. H.	10-13-23		12- 4-17
38.	Crosthwaite, C. W.	10-14-23		12-15-17
39.	Mode, H. S.	10-14-23		1- 3-18
40.	Stephens, J. A.	9- 4-27		4-12-18
41.	Caldwell, W. W.	9- 4-27		6- 6-18
42.	Read, M.	9- 4-27		6-20-18
43.	Eddie, V. G.	9- 1-29		8-11-19
44.	Bushenville, M. J.	9- 1-29		8-15-19
45.	Blakeley, G.	9- 1-29		8-16-19
46.	Smith, L. J.	9- 1-29		8-22-19



THE FAVORITE SHOES
FOR RAILWAY MEN

WE FEATURE SPECIALLY
BUILT SHOES FOR RAILWAY
MEN. BERGMANN UNION
SHOES. MADE IN PORTLAND

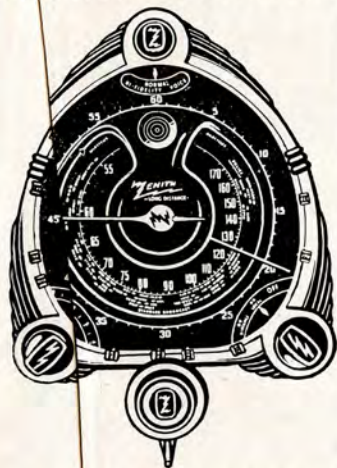
SHOES - HI-TOPS.
DRESS SHOES - WORK

RELIABLE
UNION MADE SHOES FOR MEN

N. W. Corner 4th and Washington Street

ZENITH

ALWAYS A YEAR AHEAD



Phone Us for a Demonstration

Authorized
Agents
for
WALTHAM
HAMILTON
and
ILLINOIS
WATCHES

Everything
Sold on
Very Easy
Payments

V I N E S

239 S. W. WASHINGTON PHONE ATWATER 6526

COMPLETE SELECTION
OF DIAMONDS, JEWELRY AND SILVERWARE

ABC
WASHERS
and
IRONERS

DUO THERM

OIL BURNING
CIRCULATING
HEATERS, COOK
STOVES AND
WATER HEATERS

LEONARD REFRIGERATORS



Lowest Operating Cost

The BROILER

Southern Barbecued Crab

Our latest taste sensation — You'll like it
Make Reservations Phone **BR. 0056**

THE PIT
417 S. W. OAK
925 S. W. TAYLOR
PORTLAND

THE PIT
863 E. 13TH
EUGENE

THE BROILER
1918 4TH AVENUE
SEATTLE

THE PIT
34 MASON STREET
SAN FRANCISCO

A bit of the old South brought to Portland

SWITCHMEN—Engine Foreman's Overtime Computed After 8 Hours—8-7.58

M'n.	0	5	10	15	20	25	30	35	40	45	50	55
8...	7.58	7.69	7.80	7.91	8.02	8.13	8.24	8.36	8.47	8.58	8.69	8.80
9...	8.91	9.03	9.14	9.25	9.36	9.47	9.58	9.70	9.81	9.92	10.03	10.14
10...	10.25	10.36	10.48	10.59	10.70	10.81	10.92	11.03	11.15	11.26	11.37	11.48
11...	11.59	11.70	11.82	11.93	12.04	12.15	12.26	12.37	12.48	12.60	12.71	12.82
12...	12.93	13.04	13.15	13.27	13.38	13.49	13.60	13.71	13.82	13.94	14.05	14.16
13...	14.27	14.38	14.49	14.60	14.72	14.83	14.94	15.05	15.16	15.27	15.39	15.50
14...	15.61	15.72	15.83	15.94	16.06	16.17	16.28	16.39	16.50	16.61	16.72	16.84
15...	16.95	17.06	17.17	17.28	17.39	17.51	17.62	17.73	17.84	17.95	18.06	18.17
16...	18.29											

SWITCHMEN—Helpers' Overtime Computed After 8 Hours—8-7.06

M'n.	0	5	10	15	20	25	30	35	40	45	50	55
8...	7.06	7.16	7.26	7.37	7.47	7.57	7.69	7.78	7.88	7.99	8.09	8.19
9...	8.30	8.40	8.50	8.61	8.71	8.81	8.92	9.02	9.12	9.23	9.33	9.43
10...	9.54	9.64	9.74	9.85	9.95	10.05	10.16	10.26	10.36	10.47	10.57	10.67
11...	10.78	10.88	10.98	11.09	11.19	11.29	11.40	11.50	11.60	11.71	11.81	11.91
12...	12.03	12.13	12.23	12.34	12.44	12.54	12.65	12.75	12.85	12.96	13.06	13.16
13...	13.27	13.37	13.47	13.58	13.68	13.78	13.89	13.99	14.09	14.20	14.30	14.40
14...	14.51	14.61	14.71	14.82	14.92	15.02	15.13	15.23	15.33	15.44	15.54	15.64
15...	15.75	15.85	15.95	16.06	16.16	16.26	16.37	16.47	16.57	16.68	16.78	16.88
16...	16.99											

POKANE, PORTLAND & SEATTLE RAILWAY COMPANY
VANCOUVER DIVISION
CONDUCTORS' SENIORITY LIST

No.	Name	Seniory	Date
1.	Grant, D. J.	Feb. 2,	1901
2.	Harland, J. E.	Sept. 8,	1902
3.	Surke, G. E.	Jan. 16,	1905
4.	Mass, E. J.	June 11,	1908
5.	Allen, F. F.	April 18,	1906
6.	Russell, T. L.	Nov. 23,	1906
7.	Man, Ray	Feb. 9,	1905
8.	Truett, J. O.	Sept. 7,	1907
9.	Mivan, D. J.	April 11,	1908
10.	Dson, Frank	April 29,	1909
11.	Connell, H. D.	Nov. 11,	1909
12.	Hearn, J. A.	March 23,	1910
13.	Grath, W. H.	Oct. 11,	1910
14.	Jnson, O. A.	Dec. 28,	1910
15.	Veaton, T. E.	March 17,	1911
16.	Hceil, S. R.	Nov. 6,	1913
17.	Kamer, W. G.	Dec. 19,	1916
18.	L. M. S.	May 17,	1917
19.	L. F. W.	May 18,	1917
20.	H. J. W.	May 20,	1917
21.	Joson, A. E.	Dec. 22,	1917
22.	Bag, W. D.	Dec. 28,	1917
23.	Vog, R. B.	June 17,	1918
24.	Dion, G. G.	Feb. 19,	1920
25.	Mcne, S. W.	June 15,	1920
26.	Ewig, E. E.	March 27,	1923
27.	McGire, E. S.	May 10,	1923
28.	Ros Wm.	May 11,	1923
29.	Aile, P. C.	May 15,	1923
30.	Muby, S. G.	May 17,	1923
31.	Madn, D. J.	May 19,	1923
32.	Cann, E. B.	Oct. 20,	1923
33.	Ranf, G. B.	Nov. 4,	1925
34.	Wheon, Wm.	Nov. 4,	1925
35.	Care, F. H.	Nov. 5,	1925
36.	Barr, T. F.	Feb. 2,	1926
37.	Crowy, R. E.	Feb. 9,	1926
38.	McGre, A. A.	Feb. 10,	1926
39.	Waldf, H. L.	June 3,	1927
40.	McNq, H. W.	June 4,	1927
41.	Sullivan, G. H.	June 8,	1927
42.	Dury, F. J.	June 20,	1929
43.	Robert, J. R.	Sept. 9,	1929
44.	Dube, E. J.	Sept. 11,	1929
45.	Riley, E. P.	Sept. 12,	1929
46.	Wolcot, C. M.	Sept. 13,	1929
47.	Barne, Roy	Sept. 14,	1929
48.	Smith, H. L.	Sept. 16,	1929
49.	Summs, H.	Aug. 10,	1935
50.	Rhue, J. B.	Aug. 11,	1935
51.	Croffu, C. F.	Aug. 12,	1935
52.	Lee, E. J.	Aug. 13,	1935
53.	Patterson, E. L.	Aug. 14,	1935
54.	Rahn, Carl	Aug. 15,	1935
55.	Rosendal, L. S.	Aug. 16,	1935
56.	Haggeman, F. D.	Aug. 17,	1935
57.	Cofford, A. T.	Nov. 23,	1926
58.	Oatfield, H. E.	Nov. 24,	1936
59.	Mills, W. H.	Nov. 25,	1936

SPOKANE, PORTLAND & SEATTLE RAILWAY COMPANY
VANCOUVER DIVISION
SENIORITY LIST—BRAKEMEN

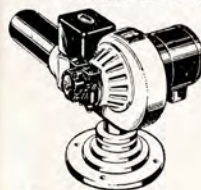
No.	Name	Seniory	Date
1.	McGrath, W. H.	May 30,	1909
2.	O'Hearn, J. A.	July 15,	1909
3.	Lee, M. S.	March 27,	1910
4.	Johnson, O. A.	Aug. 3,	1910
5.	Wheaton, T. R.	Dec. 23,	1910
6.	Lee, P. W.	Feb. 13,	1911
7.	Hall, J. W.	Feb. 25,	1912
8.	Purcell, S. R.	May 8,	1912
9.	Johnson, A. E.	Dec. 26,	1912
10.	Dickson, G. C.	Dec. 27,	1912
11.	Ewing, E. E.	May 14,	1913
12.	Burke, W. D.	Oct. 16,	1913
13.	McLane, S. W.	Oct. 18,	1913
14.	Cady, R. T.	Sept. 12,	1915
15.	McGuire, E. S.	Oct. 20,	1915

See
MONTAG
To Enjoy Abundant, Healthful
HEATING COMFORT
At Lowest Possible Cost



Let Montag factory engineers put an end to heating troubles in your home at once. No matter what fuel you desire to use . . . no matter how large or small your home, there is a modern Montag heating plant which will assure many years of complete satisfaction, when installed by our experienced heating specialists.

Make your own Individual term arrangements to have modern Montag heating by using our Individual Payment plan. Ask for complete details.



Automatic
OIL BURNERS



Automatic
AIR CONDITIONING PLANTS



Warm Air
FURNACES

We'll inspect your present heating plant without charge or obligation. Estimates, literature FREE. SEE US, or phone today.

MONTAG FACTORY SHOWROOMS

S. W. 6TH AT PINE

BROADWAY 5621

No.	Name	Seniority Date
16.	Rose, Wm.	Nov. 5, 1915
17.	Allen, R. C.	Oct. 10, 1916
18.	Kemmer, W. G.	Oct. 15, 1916
19.	Murphy, S. G.	May 12, 1917
20.	Mackin, L. J.	May 19, 1917
21.	Ramey, G. B.	June 8, 1917
22.	Wheaton, Wm.	June 12, 1917
23.	Carey, F. H.	June 26, 1917
24.	Crowley, R. E.	July 18, 1917
25.	McGuire, A. A.	July 27, 1917
26.	Cannon, E. B.	Aug. 9, 1917
27.	Votow, R. B.	Oct. 29, 1917
28.	Waldorf, H. D.	Jan. 3, 1918
29.	Reddig, W. L.	March 1, 1918
30.	Layman, C.	March 1, 1918
31.	Barry, T. F.	March 1, 1918
32.	Gammon, A.	March 1, 1918
33.	Larson, W. I.	March 1, 1918
34.	Ashe, O. W.	March 1, 1918
35.	Pearl, J. W.	March 1, 1918
36.	Burke, R. E.	March 1, 1918
37.	Patnee, L. F.	March 1, 1918
38.	Thomas, J. L.	March 1, 1918
39.	Duryee, F. J.	March 16, 1918
40.	Dube, G. J.	April 24, 1918
41.	Wolcott, C. M.	June 10, 1918
42.	Barney, Roy	June 30, 1918
43.	Summers, H.	Aug. 3, 1918
44.	Haley, J. E.	Sept. 1, 1918
45.	Rhue, J. B.	Sept. 1, 1918
46.	Guernsey, C. A.	Sept. 1, 1918
47.	Gooley, C. W.	Sept. 3, 1918
48.	Bailey, Fred	April 21, 1919
49.	Lee, P. J.	Aug. 20, 1919
50.	McNeel, H. W.	Aug. 25, 1919
51.	Patterson, L. L.	Dec. 12, 1919
52.	Sullivan, G. H.	Jan. 1, 1920
53.	Roberson, J. N.	Jan. 2, 1920
54.	Rahn, Carl	Jan. 22, 1920
55.	Gee, C. O.	June 10, 1920
56.	Rosendaul, S.	Aug. 3, 1922
57.	Nihart, H. D.	Sept. 24, 1922
58.	Christean, E.	Dec. 4, 1922
59.	Heffernan, F. D.	March 6, 1923
60.	Gulliford, R. V.	April 21, 1923
61.	Mills, W. H.	June 26, 1923
62.	Croak, Geo.	Aug. 15, 1924
63.	Riley, E. P.	Oct. 9, 1924
64.	Hoyt, G. L.	July 23, 1925
65.	Krauspe, W. R.	Aug. 16, 1925
66.	Burr, A. A.	Oct. 30, 1925
67.	Smith, H. L.	Oct. 4, 1925
68.	Moore, W. P.	June 12, 1926
69.	Engstrom, C. M.	June 14, 1926
70.	Hayes, W. R.	June 15, 1926
71.	Burton, J. C.	June 28, 1926
72.	Crawford, E. J.	June 29, 1926
73.	Crawford, A. T.	Aug. 2, 1926
74.	Nelson, E. D.	Aug. 9, 1926
75.	Nelson, C. I.	Aug. 10, 1926
76.	Hudson, W. T.	Sept. 10, 1926
77.	Barnard, Ed.	Sept. 30, 1926
78.	Waldhelm, H.	Oct. 5, 1926
79.	Krauspe, C. M.	July 1, 1927
80.	Walgren, K. J.	July 4, 1927
81.	Gillis, H. D.	April 13, 1928
82.	Overland, C.	May 3, 1928
83.	Frial, P. N.	June 5, 1928
84.	Croffut, C. F.	June 15, 1928
85.	Buchanan, H. R.	June 16, 1928
86.	Miller, A. L.	July 21, 1928
87.	Wilson, C.	Aug. 16, 1928
88.	Peters, C. R.	Oct. 6, 1928
89.	Lewis, S. A.	April 11, 1929
90.	Webb, J. M.	April 17, 1929
91.	Pierce, C. L.	April 20, 1929
92.	Patnee, A. C.	April 25, 1929
93.	O'Brien, D. S.	April 27, 1929
94.	Smith, H. E.	May 3, 1929
95.	Selph, G. E.	May 12, 1929
96.	Fox, F. G.	May 29, 1929
97.	Pequignot, D. N.	May 31, 1929
98.	McKay, J. T.	June 19, 1929

No.	Name	Seniority Date
99.	McCulloch, P. J.	July 24, 1929
100.	Johnson, Ed.	Feb. 25, 1930
101.	Cannon, W. L.	March 24, 1930
102.	Coleman, W. G.	March 27, 1930
103.	Robinson, F. W.	March 28, 1930
104.	McNulty, P. L.	Sept. 8, 1930
105.	Hutchinson, B. R.	July 21, 1934
106.	Manfred, Mike	March 22, 1935
107.	Henderson, J. K.	March 23, 1935
108.	Strang, W. L.	April 16, 1935
109.	DeMers, H. L.	May 1, 1935
110.	Berry, G. B.	May 8, 1935
111.	Sample, C. J.	Aug. 15, 1935
112.	Harrigan, Fred	Aug. 21, 1935
113.	Terhune, Chris.	Aug. 23, 1935
114.	Woodall, H.	Sept. 1, 1935
115.	Lane, D. F.	Sept. 12, 1935
116.	Bender, G. E.	Sept. 15, 1935
117.	Frey, E.	Sept. 25, 1935
118.	Johnson, H. M.	Sept. 26, 1935
119.	Pitman, R. I.	Oct. 16, 1935
120.	Bowers, C. W.	Oct. 21, 1935
121.	Wilson, A. P.	Oct. 24, 1935
122.	Stout, E. G.	Oct. 27, 1935
123.	Johnson, R. B.	Dec. 8, 1935
124.	Fairburn, W. H.	Dec. 16, 1935
125.	Tallman, R. F.	March 12, 1936
126.	Abbot, M. J.	April 3, 1936
127.	Babcock, H. G.	April 14, 1936
128.	Oatfield, H. E.	June 1, 1936
129.	Schwatka, J. L.	June 17, 1936
130.	Plummer, W. L.	June 18, 1936
131.	Wilson, M. E.	June 24, 1936
132.	Hitchcock, E. P.	July 1, 1936
133.	Wilkey, E. D.	July 4, 1936
134.	Dawson, Earl	July 26, 1936
135.	Ellis, L. A.	Aug. 2, 1936
136.	Malloy, John	Aug. 5, 1936
137.	Lantry, L. B.	Aug. 17, 1936
138.	Wolfe, L. C.	Aug. 31, 1936
139.	Delaney, T. M.	Sept. 1, 1936
140.	Nelson, K. A.	Sept. 5, 1936
141.	Rankin, E. F.	Sept. 6, 1936
142.	Castens, L. C.	Sept. 9, 1936
143.	Egan, F. H.	Sept. 13, 1936
144.	Garner, G. E.	Sept. 21, 1936
145.	Williams, A. L.	Sept. 28, 1936
146.	Higgins, C. O.	Sept. 30, 1936
147.	Lewis, W. R.	Oct. 2, 1936
148.	Prosser, O. C.	Oct. 5, 1936
149.	Gammon, A. M.	Oct. 7, 1936
150.	Hammers, J. B.	Oct. 8, 1936
151.	Allen, C. S.	Oct. 10, 1936
152.	Gill, G. H.	Oct. 14, 1936
153.	Broderick, Robt.	Oct. 16, 1936
154.	Sullivan, E. O.	Oct. 17, 1936
155.	Whitmore, H. O.	Oct. 18, 1936
156.	Gallagher, W. J.	Oct. 19, 1936
157.	Arnold, W. H.	Oct. 19, 1936
158.	Schantz, J. J.	Oct. 21, 1936
159.	Syberg, G. L.	Oct. 22, 1936
160.	Wassenar, H. J.	Oct. 26, 1936
161.	Dennis, A. W.	Oct. 30, 1936
162.	Hahblen, J. G.	Nov. 5, 1936
163.	Bratton, J. M.	Nov. 9, 1936
164.	Krueger, A. C.	Nov. 10, 1936
165.	Miller, W. A.	Nov. 10, 1936
166.	George, R. K.	Nov. 11, 1936
167.	English, W. J.	Nov. 12, 1936
168.	Cannon, J. S.	Nov. 13, 1936
169.	Gray, Jas.	Nov. 14, 1936
170.	McNeel, H. F.	Nov. 17, 1936
171.	Mitchell, W. J.	Nov. 20, 1936

**SPOKANE, PORTLAND & SEATTLE RAILWAY COMPANY
SYSTEM LINES
SENIORITY LIST—FIREMEN
ASTORIA DIVISION, DECEMBER 1, 1936**

No.	Name	Seniority Date
1.	Amundson, Arthur J.	3-13-13
2.	Thompson, Joseph R.	11-20-17
3.	Shook, Thomas H.	1-28-18
4.	Hamlin, Frank L.	4-10-18
5.	Sinfield, Elvin K.	7-18-18
6.	Phillips, Gordon E.	8-28-22



RAILROAD UNIFORMS

UNION MADE

Tailored in the NORTHWEST are always the BEST, and especially so, if they bear the NUDELMAN BROS. label!

We use Wanskuck GREAT NORTHERN SERGE exclusively! It's the best fabric made and you should not accept a substitute!

Let us "tailor" your next uniform—you'll like the difference!

16 oz. Uniform.....\$37.50

18 oz. Uniform..... 40.00

NUDELMAN BROTHERS

PORTLAND - SEATTLE

Special Policies for Railroad Employees

Provident Life and Accident

Insurance Company of

Chattanooga, Tenn.

H. C. Pownall Insurance Agency

GENERAL INSURANCE

LOYALTY BLDG., 630 S. W. Park ATwater 6456

SPOKANE, PORTLAND & SEATTLE RAILWAY COMPANY PORTLAND DIVISION SENIORITY LIST OF BRAKEMEN

No.	Name	Passenger Date
1.	Crosthwaite, B. S.	Oct. 28, 1915
2.	Moore, E. B.	April 1, 1932
3.	Yokum, R. L.	July 20, 1936
4.	Bigler, L. C.	Aug. 17, 1936
5.	French, G. A.	Dec. 15, 1936
6.	Schvotka, J. L.	May 17, 1937
7.	Norby, N. G.	May 26, 1937
8.	Rufner, F. C.	June 4, 1937
9.	Abbott, M. J.	Sept. 4, 1937
10.	Frink, R. B.	Sept. 22, 1937
11.	Young, K. W.	Oct. 7, 1937

SPOKANE, PORTLAND & SEATTLE RAILWAY COMPANY SENIORITY LIST OF YARDMEN PORTLAND YARD

No.	Name	Seniority Date
1.	Madden, C. W.	Sept. 28, 1908
2.	Schrader, E. M.	Oct. 2, 1909
3.	Russ, D. L.	Oct. 21, 1917
4.	Zearfoss, M.	April 2, 1918
5.	Daly, G. G.	Aug. 1, 1919
6.	Sevier, B. V.	April 5, 1920
7.	Klapperich, J.	April 15, 1920
8.	Blaise, H. P.	April 19, 1920
9.	Morrison, J. L.	April 27, 1920
10.	Frye, H. P.	April 27, 1920
11.	Fraser, E. A.	May 2, 1920
12.	Smith, H. A.	May 5, 1920
13.	Smith, A. J.	July 6, 1920
14.	Robertson, W. P.	July 8, 1920
15.	Peterson, C. S.	Aug. 2, 1920
16.	J. W. Glendening	Aug., 1922
17.	Haskell, R. G.	April 14, 1923
18.	Thomson, Clyde	Oct. 6, 1923
19.	Coonfield, W. W.	Oct. 16, 1923
20.	McCally, C. G.	Nov. 6, 1923
21.	Kirkham, A. H.	May 3, 1925
22.	Olson, C. A.	June 22, 1925
23.	Zeller, M. J.	Dec. 28, 1926
24.	Jackson, W. A.	May 21, 1926
25.	Ballard, H. T.	June 3, 1927
26.	Grant, H. E.	July 20, 1928
27.	Darst, R. M.	July 31, 1928
28.	Van Osdel, L.	Sept. 5, 1928
29.	Solomen, W. D.	Sept. 11, 1928
30.	Klapperich, B. L.	June 27, 1929
31.	Hogan, J. J.	Sept. 10, 1929
32.	Vimpany, S. L.	Aug. 13, 1934
33.	Murray, H. E.	Aug. 14, 1934
34.	Connelly, V. W.	Aug. 14, 1934
35.	Ritz, George	Aug. 16, 1934
36.	Solem, Roy	Sept. 17, 1935
37.	Balsbaugh, R. J.	Sept. 22, 1935
38.	Coleman, J. J.	Sept. 25, 1935
39.	Murphy, W. J.	Oct. 1, 1935
40.	Solomon, C. D.	July 13, 1936
41.	George, C. E.	Sept. 1, 1936
42.	Foran, H. R.	Sept. 23, 1936
43.	Salisbury, Earl	Oct. 5, 1936
44.	Page, Albert	Oct. 13, 1936
45.	Buelher, L. F.	April 14, 1937
46.	Jones, H. C.	May 19, 1937
47.	Earl Kennedy	June 20, 1937
48.	Lane, J. C.	Sept. 8, 1937
49.	Dunlap, J. B.	Sept. 8, 1937
50.	Lawrey, Fred	Sept. 29, 1937
51.	Levins, J. C.	Oct. 4, 1937
52.	Cody, J. F.	Oct. 24, 1937
53.	Morrison, J. L., Jr.	Oct. 24, 1937
54.	Roberts, G.	Oct. 30, 1937

SPOKANE, PORTLAND & SEATTLE RAILWAY COMPANY SYSTEM LINES SENIORITY LIST—ENGINEERS ASTORIA DIVISION, DECEMBER 1, 1936

No.	Name	Seniority Date
1.	Walch, Charles F.	5-22-03
2.	Fake, Joseph J.	4- 1-07
3.	Helgeson, William G.	8- 1-07
4.	Hoberg, Fritz A.	6- 9-09
5.	Cash, Robert B.	6- 3-11

6.	Ystad, Oswald L.	6- 6-11
7.	Reifel, Henry C.	6-29-11
8.	Krager, Thorwald	8-10-14
9.	Patterson, Harry C.	8-11-14
10.	Anderson, Nernard N.	2-12-16
11.	Stoops, Edward F.	3- 6-17
12.	Overholt, William F.	4-30-18
13.	Fanning, Thomas E.	4-30-18
14.	Callahan, Bart J.	6-29-18
15.	Swenson, Milton O.	6-11-30
16.	Smith, Henry E.	6-25-30
17.	Gates, Preston L.	6-25-30
18.	Martindale, Walter C.	7-22-34

**SWITCHMEN—VANCOUVER, WASH. YARD
S. P. & S. SENIORITY LIST**

No.	Name	Seniority Date
1.	Biggs, George	Foreman 5-15-10
2.	Rankin, R. W.	Foreman 6- 3-10
3.	Rosendaal, E. W.	Foreman 8-24-12
4.	Broyles, L. L.	Foreman 10-27-16
5.	Peyton, R. B.	Foreman 5-14-17
6.	Fox, A. E.	Foreman 11- 6-17
7.	Kelley, J. E.	Foreman 12-12-17
8.	Van Horn, J. P.	Foreman 1-11-18
9.	Bergerson, H. E.	Foreman 1-11-18
10.	Johnson, L. G.	Foreman 1-20-20
11.	Sanders, S. H.	Foreman 10-18-22
12.	Goheen, W. C.	Switchman 1-25-23
13.	Nixon, T. G.	Foreman 9-18-24
14.	Shanks, L. A.	Foreman 9-18-24
15.	Scroggins, Lon	Switchman 8-20-25
16.	Grolo, Joe	Switchman 8-21-25
17.	Young, J. F.	Switchman 6- 3-26
18.	Chainey, A. E.	Switchman 8-16-26
19.	Hundley, R. F.	Switchman 8-17-26
20.	Ryan, A. J.	Switchman 9-29-26
21.	Bell, Geo.	Switchman 8- 2-27
22.	Burley, J. J.	Switchman 8-22-27
23.	Colleary, R. J.	Switchman 4-27-37
24.	Dixon, Jack	Switchman 6-23-37
25.	Cochrane, F. W.	Switchman 8-11-37
26.	McLendon, R. C.	10-10-37
27.	Adams, G. D.	10-12-37
28.	Smith, Chas.	10-13-37

**OREGON ELECTRIC RAILWAY COMPANY
SPOKANE, PORTLAND & SEATTLE RAILWAY COMPANY
VANCOUVER DIVISION**

FIREMEN'S SENIORITY LIST, July 1, 1937

No.	Name	Seniority Date
1.	Bland, J. F.	3- 2-10
2.	Davis, C. B.	10- 2-18
3.	Showman, C.	6-11-20
4.	Smith, C. A.	6-15-20
5.	Felter, M. L.	7- 1-20
6.	Wilson, E.	7-10-20
7.	Bolts, H. W.	7-22-20
8.	Bangs, H. R.	11- 8-20
9.	Zulfer, G. H.	6- 2-23
10.	Allen, C. W.	6- 3-23
11.	Fields, Ed.	7- 8-23
12.	Elliot, N. C.	7-22-23
13.	Mulligan, J.	9-14-23
14.	Freeman, C. T.	9-15-23
15.	Farrah, R. G.	9-17-23
16.	Evans, G. E.	9-18-23
17.	Barton, E. H.	9-19-23
18.	Lyons, M. F.	10- 8-23
19.	Sarsfield, J. H.	10-17-23
20.	Coughlin, O. J.	10-18-23
21.	Wayman, Clair	10-18-23
22.	Collison, R. A.	10-18-24
23.	Huff, G. G.	8-20-25
24.	Butz, W. A.	7-26-26
25.	Yost, F. A.	7-28-26
26.	Evans, C. L.	7-29-26
27.	Lamb, R. D.	7-29-26
28.	Christopherson, H. O.	7-29-26
29.	Koch, J. P.	8-17-26
30.	Boyse, K. L.	9-19-26
31.	Baker, G. L.	8-29-27
32.	Nelson, Wm. L.	8-30-27
		9-14-27

33.	Miller, D. A.	6-23-28
34.	Johnson, T. A.	6-23-28
35.	Radliff, B. A.	6-24-28
36.	Malmberg, S. E.	7-26-28
37.	Boyse, C. S.	7-27-28
38.	Coughlin, C. J.	8-11-28
39.	Smith, H. F.	9-28-28
40.	Wetzel, H. F.	10- 6-28
41.	Mowry, N. E.	10-12-28
42.	Rhuman, M. H.	10-14-28
43.	Thompson, D. L.	6- 7-29
44.	Cox, J. E.	6-10-29
45.	Davis, E. C.	6-13-29
46.	Snedeger, A. R.	6-10-29
47.	Ellertson, H. K.	8-17-29
48.	Warford, E. V.	8-30-29
49.	Annabel, C. E.	9- 1-29
50.	Fitzgerald, L. J.	9-12-29
51.	Lyon, L. A.	10-26-29
52.	Sinfield, H. K.	9-14-36
53.	Ruthrauff, C. E.	9-14-36
54.	Behrens, I. L.	9-14-36
55.	Bacon, R. A.	10- 2-36
56.	Baldwin, G. A.	10- 2-36
57.	Fitzgerald, J. D.	10- 3-36
58.	Livingston, D. T.	10- 3-36
59.	Bain, G. M.	10- 3-36
60.	Abney, G. E.	10- 4-36
61.	Snider, R. W.	10- 7-36
62.	Snider, A. B.	10-10-36
63.	Ritter, P. J.	10-14-36
64.	Thomas, W. S.	10-21-36
65.	French, D. N.	10-23-36
66.	Anderson, A. C.	10-23-36
67.	Heath, C. W.	11- 2-36
68.	Condon, F. W.	12-18-36
69.	Close, L. H.	12-19-36
70.	Coyle, F. M.	12-23-36
71.	Cochran, O. E.	12-24-36
72.	Rainey, W. C.	12-24-36
73.	Bonnie, J. L.	12-26-36
74.	Coffield, D. G.	12-30-36
75.	Harper, J. M.	12-30-36
76.	Rhue, W. G.	1-30-37
77.	Baker, H. M.	2- 3-37
78.	Baylous, H. J.	2- 4-37
79.	Young, C. F.	2- 4-37
80.	Wilson, A. A.	6-28-39
81.	Reed, E. H.	6-29-37
82.	Campion, M. F.	6-29-37
83.	Tkachenko, Geo.	6-29-37
84.	Courter, E. G.	7-20-37
85.	Ritter, J. F.	7-21-37
86.	Frink, R. A.	8-19-37
87.	Jordan, M. W.	8-20-37
88.	Gould, G. G.	8-20-37
89.	Williams, F. L.	8-20-37
90.	Neiman, O. J.	8-22-37

**P. A. P. RY. AND G. C. & W. R. RY.
UNITED RAILWAYS
SENIORITY LIST OF CONDUCTORS**

No.	Name	O. E. Ry. Date
1.	Bretz, W. H.	Jan. 1, 1908
2.	Haley, C. L.	June 1, 1908
3.	Johnson, G. F.	Sept. 28, 1909
4.	Ellington, E. J.	Oct. 1, 1909
5.	Buckley, J. A.	June 30, 1910
6.	Conradt, H. M.	Aug. 5, 1910
7.	Scruggs, A. E.	Sept. 10, 1910
8.	Page, Roy	April 7, 1911
9.	Woods, J. J.	Sept. 1, 1911
10.	Maxwell, W. C.	Oct. 21, 1911
11.	Browne, A. B.	April 4, 1912
12.	Jewett, L. E.	May 26, 1912
13.	Kunkle, C. M.	May 26, 1912
14.	Straub, J. H.	Aug. 24, 1912
15.	Sloat, E. E.	May 16, 1913
16.	Reidy, P. F.	Sept. 1, 1913
17.	Green, L. M.	Oct. 18, 1913
18.	Matthews, M. C.	Aug. 2, 1919
19.	Younger, N.	Nov. 22, 1922
20.	Scruggs, R. F.	Nov. 26, 1922
21.	Vance, W. W.	April 9, 1923
22.	Brough, J. E.	April 9, 1923

West Hills Memorial Park

A MODERN CEMETERY

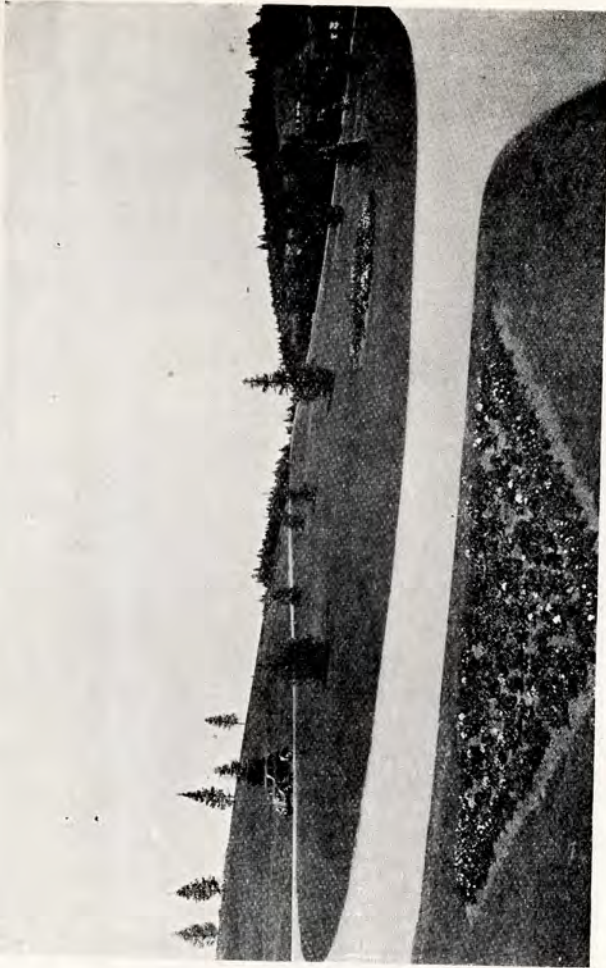
Non-Sectarian, perpetually endowed, and thoroughly modern, it will fill a need long realized. Lots are now being sold on easy terms and at very reasonable prices.

WEST HILLS MEMORIAL PARK is located on Canyon Road, via Jefferson Street, four miles from City Center. The new offices are now located at the Park.

For further information call ATwater 7810, or write West Hills Memorial Park, Portland, Oregon.

Picture at left shows parts of La Cresta and Forest Lawn Sections of West Hills Memorial Park as seen from the Tualala View Section. . . observe the effective arrangement of flower beds and shrubbery to blend with the topography of each area.

**DRIVE OUT AND SEE THIS
BEAUTIFUL PARK**



23.	Pratt, E. J.	April 9, 1923
24.	Conoguc, J. A.	April 9, 1923
25.	Barry, G. W.	Aug. 1, 1935
26.	Fair, E. B.	Aug. 1, 1935
27.	Moover, D. F.	Aug. 1, 1935
28.	Nubbe, A. E.	May 31, 1937
29.	Wisdom, W. G.	May 31, 1937
30.	McGinoms, H. A.	May 31, 1937
31.	Cassidy, B. H.	Sept. 1, 1937

OREGON ELECTRIC RAILWAY COMPANY P. A. P. RY. AND G. C. & W. R. RY. UNITED RAILWAYS SENIORITY LIST OF BRAKEMEN

No.	Name	O. E.—U Rys.	Date
1.	Kyle, E. A.	June 11, 1910	
2.	Owens, G. G.	June 19, 1910	
3.	Wood, J. K.	April 7, 1911	
4.	Meyer, E. L.	April 15, 1911	
5.	Younger, P. L.	Nov. 10, 1911	
6.	Dees, F. J.	Nov. 28, 1915	
7.	Bjerk, L. B.	June 8, 1920	
8.	Shull, J. W.	Oct. 20, 1920	
9.	Maxwell, L. A.	Nov. 22, 1922	
10.	Imhoff, Wm.	Dec. 6, 1922	
11.	Brandtner, B. A.	May 17, 1928	
12.	Smock, C. M.	Aug. 6, 1929	
13.	MacDonald, R. A.	Sept. 27, 1935	
14.	Miller, A. C.	July 17, 1936	
15.	Carsh, F. W.	July 24, 1936	
16.	Darcy, Martin	July 24, 1936	
17.	Thayer, H. C.	July 28, 1936	
18.	Berglund, A.	Aug. 12, 1936	
19.	Moody, E. F.	Sept. 11, 1936	
20.	McIntosh, M. M.	Sept. 15, 1936	
21.	Dunham, W. H.	Sept. 18, 1936	
22.	Englund, George	Sept. 25, 1936	
23.	Donaway, A. C.	Oct. 8, 1936	
24.	Wilson, J. F.	Oct. 9, 1936	
25.	Cade, U. E.	May 15, 1937	
26.	Flagel, Mike	May 19, 1937	
27.	Rutter, Thos.	May 20, 1937	
28.	Gunderson, C. O.	May 25, 1937	
29.	Johnson, J. L.	May 26, 1937	
30.	Sivanson, G. K.	May 31, 1937	
31.	Vandezanden, A. J.	June 7, 1937	
32.	McPhail, E. E.	June 10, 1937	
33.	Swartz, A. J.	July 7, 1937	
34.	Sullivan, D. C.	July 19, 1937	
35.	McKee, R. T.	July 25, 1937	
36.	Scott, I. G.	July 26, 1937	
37.	Gilfillon, J. D.	July 27, 1937	
38.	Parkhill, R. N.	July 31, 1937	
39.	Miller, V. W.	Aug. 8, 1937	
40.	Morris, R. B.	Aug. 9, 1937	
41.	George, D. C.	Aug. 10, 1937	
42.	Hanlon, Dan	Aug. 12, 1937	
43.	O'Brien, S. E.	Aug. 16, 1937	
44.	Miller, C. E.	Aug. 25, 1937	
45.	Carlson, J. J.	Sept. 9, 1937	
46.	Neutzling, R. J.	Sept. 19, 1937	
47.	Clyde, Fred	Sept. 24, 1937	
48.	Nauncheff, M.	Sept. 29, 1937	

OREGON ELECTRIC RAILWAY—PORTLAND, ASTORIA & PACIFIC UNITED RAILWAYS—GALES CREEK & WILSON RIVER SENIORITY LIST—ENGINEERS—DECEMBER 1, 1936

No.	Name	Ore. Elec. United Rys. P. A. & P. G. C. & W. R. Ry.		Date
		Date	Date	
1.	Tucker, T. W.	1-1-08	9-10-10	4-9-23
2.	DeBorst, H.	1-20-08	9-10-10	4-9-23
3.	Adams, C.	3-4-08	9-10-10	4-9-23
4.	Barker, E. J.	3-3-08	9-10-10	4-9-23
5.	Everitt, W. A.	6-30-10	9-10-10	4-9-23
6.	Harrington, F.	9-10-10	4-1-07	4-9-23
7.	Stevens, F. J.	9-10-10	5-8-09	4-9-23
8.	Schoenberg, E.	1-30-11	3-17-11	4-9-23
9.	Holmes, C. L.	2-17-11	3-17-11	4-9-23
10.	Heath, D. R.	5-28-11	5-28-11	4-9-23
11.	Moss, R. F.	3-22-11	3-22-11	4-9-23
12.	Young, A. R.	2-18-12	3-17-12	4-9-23
13.	Webb, F. C.	3-17-12	6-7-20	4-9-23
14.	Gottschalk, G. W.	6-7-20	8-22-21	4-9-23
15.	Rathbun, P. W.	8-22-21	8-22-21	4-9-23
16.	Teeter, F. E.	5-26-22	5-26-22	4-9-23

Do You Need Money?

If you have financial trouble

Come and See Us

We Make Salary and Chattel Loans

Evergreen Finance Company

5TH AND MAIN STREETS
VANCOUVER, WASHINGTON
PHONE 1450

Portland's

Most Complete

Seed and Pet Store



PORTLAND SEED & PET STORE

204 S. W. Yamhill

ATwater 3871

17. Brownrigg, H. T.....	4- 9-23	4- 9-23	9-19-22
18. Beresford, H. E.....	4- 9-23	4- 9-23	10-18-22
19. Jenkins, D.....	4- 9-23	4- 9-23	10-27-22
20. Henderson, W. M.....	4- 9-23	4- 9-23	11-21-22
21. Frank, E. G.....	4- 9-23	4- 9-23	1-22-23
22. Bennett, E. E.....	5-30-23	5-30-23	5-30-23
23. Crowley, J. J.....	5-31-23	5-31-23	5-31-23
24. Abbott, W. O.....	12-11-23	12-11-23	12-11-23
25. LaDue, L. J.....	8-29-25	8-29-25	8-29-25
26. Schwinoof, A.....	6- 2-26	6- 2-26	6- 2-26
27. Bothman, F. W.....	6- 3-26	6- 3-26	6- 3-26
28. Fisher, W. P.....	7-12-26	7-12-26	7-12-26

OREGON ELECTRIC RAILWAY COMPANY PORTLAND-ASTORIA UNITED RAILWAYS

TROLLEY TENDER & FIREMAN SENIORITY LIST

No.	Name	Seniority Date
1. Wright, E. E.....	April 5, 1909	
2. Hendrix, S. J.....	Sept. 19, 1921	
3. Altig, E.....	Oct. 29, 1921	
4. Selter, M. R.....	April 9, 1923	
5. Ingle, W. E.....	April 9, 1923	
6. Hill, W. H.....	April 9, 1923	
7. English, H. C.....	April 9, 1923	
8. Alderson, W. J.....	April 21, 1923	
9. Olson, F. M.....	Nov. 28, 1923	
10. Bliven, C. D.....	Jan. 14, 1924	
11. Blyth, W. W.....	Feb. 9, 1924	
12. Cleek, N.....	Oct. 9, 1924	
13. Bishop, E. R.....	Oct. 16, 1925	
14. Heath, G. N.....	Nov. 30, 1925	
15. Key, H.....	July 7, 1926	
16. Anderson, W. J.....	Sept. 28, 1926	
17. Knox, H. O.....	Aug. 6, 1929	
18. Bain, A. D.....	Aug. 7, 1929	
19. Strauss, F. S.....	Aug. 3, 1937	
20. Brohobent, S. J.....	Aug. 11, 1937	
21. May, J. R.....	Aug. 24, 1937	

THE NORTHERN PACIFIC TERMINAL COMPANY

SENIORITY LIST OF ENGINEEMEN

September 13, 1937

Office of Master Mechanic, Sept. 13, 1937

No.	Name	Seniority Date
1. Byrne, Wilfred M.....	Nov. 1, 1901	
2. Zanders, Theodore H.....	Aug. 8, 1906	
3. Stien, James E.....	July 1, 1909	
4. Olean, Fred N.....	March 4, 1912	
5. Benham, Frank E.....	Sept. 3, 1913	
6. Simcox, William A.....	Aug. 1, 1914	
7. Hollenbach, Elmer.....	Aug. 2, 1914	
8. Tucker, Albert P.....	May 5, 1917	
9. Johnson, Frank O.....	July 11, 1917	
10. Johnson, Herbert E.....	July 17, 1917	
11. Hughbank, Dale.....	Sept. 6, 1917	
12. Sanders, Jesse.....	July 8, 1918	
13. Schlick, Frank J.....	Sept. 6, 1919	
14. Pierson, Elmo C.....	May 10, 1920	
15. Horney, Tim H.....	June 28, 1920	
16. Balzimer, Otto O.....	June 29, 1920	
17. Pounestone, Fred A.....	Aug. 16, 1920	
18. Wright, Frank E.....	Aug. 23, 1921	
19. Feuerstein, Harry J.....	Sept. 3, 1921	
20. Owen, Ward E.....	Aug. 16, 1925	
21. Miller, William H.....	Aug. 16, 1925	
22. Zerbach, Lester E.....	Dec. 25, 1925	
23. Hetherington, James W.....	Dec. 25, 1925	
24. Harris, Thomas B.....	May 19, 1929	
25. Miller, Wm. Wallace.....	May 19, 1929	
26. Barnes, Melvin O.....	July 7, 1929	
27. Foster, Lee L.....	Sept. 1, 1929	
28. Fry, Roy M.....	Dec. 25, 1933	
29. Ferguson, Ben W.....	Dec. 31, 1933	
30. Wakefield, Harry E.....	July 4, 1934	
31. Hunt, William B.....	Dec. 24, 1935	
32. Arbuckle, Harry G.....	Dec. 31, 1935	
33. Tucker, Arthur H.....	Aug. 16, 1936	
34. Johnson, Ralph O.....	Oct. 24, 1936	
35. Webb, Harry E.....	Dec. 25, 1936	
36. Eley, Ray C.....	Jan. 18, 1937	
37. Kuehnel, Frank A.....	Jan. 18, 1937	
38. Hansen, James W.....	Jan. 18, 1937	

39.	Schnell, Louis.....	Jan. 18, 1937
40.	Carr, Thomas E.....	June 30, 1937
41.	Brown, Rufus O.....	July 18, 1937
42.	Evans, Roy A.....	Aug. 16, 1937
43.	Hanks, Earl E.....	Nov. 7, 1937

THE NORTHERN PACIFIC TERMINAL COMPANY
YARDMEN'S SENIORITY

November 3, 1937

No.	Name	Seniority Date
1.	Gollings, Fred S.....	April 26, 1907
2.	Rannie, James A.....	Aug. 1, 1907
3.	Humble, John A.....	Nov. 1, 1907
4.	Borg, Verdi.....	July 1, 1909
5.	Furlong, Thomas E.....	March 21, 1910
6.	Worden, Ben F.....	Oct. 14, 1912
7.	Beach, James T.....	June 23, 1913
8.	Earp, Thomas J.....	Jan. 8, 1917
9.	Burke, Albert W.....	April 26, 1917
10.	Sherwood, Marion C.....	Feb. 14, 1918
11.	Kummerow, Charles H.....	Oct. 1, 1918
12.	Love, John M.....	Jan. 27, 1920
13.	Farr, William.....	April 17, 1920
14.	Chase, Arthur L.....	April 19, 1920
15.	White, Sidney A.....	April 19, 1920
16.	Crook, Lawrence.....	April 23, 1920
17.	Reiner, Frank.....	May 21, 1920
18.	Coleman, Leincious.....	May 25, 1920
19.	Walsh, Frank E.....	June 8, 1920
20.	Clancy, Charles M.....	July 5, 1920
21.	Rothman, William.....	July 18, 1920
22.	Allen, Thomas J., Sr.....	July 29, 1920
23.	Reece, Ercill W.....	Aug. 10, 1920
24.	Halbrook, Charles E.....	Aug. 20, 1920
25.	Long, Frank W.....	Sept. 15, 1920
26.	Jack, Albert J.....	Sept. 15, 1920
27.	Chance, Martin.....	Sept. 23, 1920
28.	Kertcher, Walter.....	Sept. 28, 1920
29.	CaVaness, Walter.....	Oct. 2, 1920
30.	Estes, Elwood B.....	Sept. 6, 1921
31.	Foss, Charles R.....	Sept. 6, 1921
32.	Proctor, Robert W.....	Aug. 31, 1922
33.	Lally, Martin M.....	Sept. 20, 1922
34.	Bell, Joseph B.....	Dec. 20, 1922
35.	Trepanier, Louis N.....	Aug. 16, 1923
36.	Kirkpatrick, James A.....	Aug. 24, 1923
37.	Kalibak, Peter P.....	Sept. 17, 1923
38.	Rinker, Frank N.....	Aug. 6, 1924
39.	Barkhurst, Ralph C.....	Aug. 7, 1924
40.	Lightbody, Arthur W.....	July 2, 1925
41.	Cudaback, Clossen J.....	July 28, 1925
42.	Cuortney, George M.....	July 30, 1925
43.	Bryant, Howard.....	Aug. 7, 1925
44.	Burnside, James A.....	Aug. 11, 1925
45.	Hague, George A.....	Sept. 8, 1925
46.	Kennedy, William A.....	Sept. 25, 1925
47.	Evans, Thomas W.....	Aug. 7, 1926
48.	Burgoon, Isadore.....	Dec. 21, 1926
49.	Lord, Fred D.....	June 17, 1927
50.	Lord, William F.....	July 6, 1927
51.	Jones, Jack H.....	Aug. 4, 1927
52.	Reiner, Nick.....	May 21, 1928
53.	Bitz, Walter J.....	May 29, 1928
54.	Gallagher, Robert E.....	June 29, 1928
55.	Harrington, Harry A.....	Aug. 22, 1928
56.	Hearn, Thomas J.....	Sept. 12, 1928
57.	Halbrook, Wesley B.....	Oct. 19, 1928
58.	Perrin, Joseph S., Jr.....	June 13, 1929
59.	Redfield, Eugene B.....	June 14, 1929
60.	Robinson, Brainard J.....	July 1, 1929
61.	Sandy, George W.....	July 23, 1929
62.	Graue, Owen.....	Sept. 10, 1935
63.	Lewis, Roy S.....	Sept. 11, 1935
64.	Cody, John F.....	Sept. 12, 1935
65.	Allen, Raymond C.....	Sept. 16, 1935
66.	Sackett, Leander D.....	Sept. 16, 1935
67.	Jones, Wilber C.....	Sept. 17, 1935
68.	Mecham, Hugh.....	Sept. 17, 1935
69.	Angell, Charles L.....	Oct. 2, 1935
70.	Warren, Guy E.....	Nov. 4, 1935
71.	Soder, Oscar W.....	June 30, 1936
72.	Kirkpatrick, Milton A.....	July 4, 1936
73.	Farr, Raymond C.....	July 4, 1936



LINEHAM MOTORS
WILLYS Sales and Service

Third and Washington Streets
Vancouver, Washington

Portland Phone Vancouver Phone
ATwater 4432 167

DUKE'S MODERN PIT

PHONE 8084

Barbecued Foods That Are
AMAZINGLY DELICIOUS

The One and Only Real Barbecue in Town
If you've ever had a better Barbecue than
this one—it's on us

104 East 6th St., Vancouver, Washington
Mr. and Mrs. F. G. "Duke" Murray

Office Phone 841 Res. Phone 43F21

Wahl Plumbing & Heating

ESTIMATES FURNISHED

400 Washington Street
F. L. WAHL Vancouver, Washington

**STANLEY'S RADIO &
ELECTRIC SHOP**

RADIOS, REFRIGERATORS, WASHERS
IRONERS, APPLIANCES, ETC.

TELEPHONE 231

1909 MAIN STREET, VANCOUVER, WASHINGTON

PATRONIZE AN EX R. R. ENGINEER, U. P.

74. Hildebrand, Henry.....	July 6, 1936
75. Love, Earl H.....	July 7, 1936
76. Allen, Thomas J., Jr.....	July 8, 1936
77. Gallagher, Lou.....	July 16, 1936
78. Baker, Elmer.....	July 27, 1936
79. Faulkner, Mack J.....	July 27, 1936
80. Moore, Roy J.....	Sept. 11, 1936
81. Keller, John.....	Sept. 12, 1936
82. Cunningham, Ernest E.....	Sept. 15, 1936
83. Helmer, Carl G.....	Sept. 16, 1936
84. McKeage, Mervin J.....	Sept. 17, 1936
85. Cross, Verm M.....	Sept. 21, 1936
86. Wray, LaRue M.....	Oct. 1, 1936
87. McDermott, Glen C.....	Oct. 3, 1936
88. Pettit, Joseph L.....	Jan. 7, 1937
89. Eagan, Oliver R.....	Jan. 29, 1937
90. Leap, John F., Jr.....	Jan. 30, 1937
91. Wilkey, Earl D.....	Jan. 31, 1937
92. Bartunek, Glen E.....	March 3, 1937
93. Kirchgraber, Paul J.....	May 2, 1937
94. Bruhn, George.....	May 8, 1937
95. Roberts, Jimmey D.....	May 27, 1937
96. Diorio, Carl J.....	May 27, 1937
97. Heath, Warren.....	May 27, 1937
98. Kanzler, Herman J.....	May 28, 1937
99. Levak, Frank.....	May 28, 1937
100. Farnham, Roscoe L.....	May 28, 1937
101. Dills, Frank E.....	July 2, 1937
102. Nagle, Edward T.....	July 4, 1937
103. Mills, Fredrick M.....	July 26, 1937
104. Hanks, Alfred U.....	Aug. 18, 1937
105. Briggs, Frank A.....	Sept. 9, 1937
106. Hansen, H. E.....	Sept. 25, 1937
107. Stanley, Samuel.....	Oct. 6, 1937
108. Dishman, Prentice.....	Oct. 12, 1937
109. Swanson, Rueben E.....	Oct. 20, 1937
110. Avery, Dewey E.....	Oct. 21, 1937

FIREMEN

1. Barnes, Melvin O.....	Jan. 16, 1920
2. Foster, Lee L.....	April 30, 1920
3. Fry, Roy M.....	May 7, 1920
4. Ferguson, Ben W.....	June 7, 1920
5. Wakefield, Harry E.....	July 8, 1920
6. Hunt, William B.....	July 16, 1920
7. Arbuckle, Harry G.....	July 21, 1920
8. Tucker, Arthur H.....	July 20, 1921
9. Johnson, Ralph O.....	Sept. 12, 1922
10. Webb, Harry E.....	Sept. 13, 1922
11. Eley, Ray C.....	Sept. 16, 1922
12. Kuehnel, Frank A.....	Oct. 15, 1923
13. Hansen, James W.....	Aug. 18, 1926
14. Schnell, Louis.....	Sept. 9, 1927
15. Carr, Thomas E.....	July 25, 1928
16. Brown, Rufus O.....	July 25, 1928
17. Evans, Roy A.....	Aug. 25, 1928
18. Hanks, Earl E.....	March 6, 1929
19. Parker, Harry L.....	July 21, 1929
20. Gannon, Clifford B.....	July 21, 1929
21. Corbett, Aloysius J.....	Aug. 7, 1929
22. Workman, Waldo P.....	Aug. 23, 1929
23. Johnson, Earnest L.....	Oct. 1, 1929
24. Shunway, Rae B.....	Oct. 2, 1929
25. Wilcox, Horiatio N.....	Oct. 23, 1935
26. Hughbank, Joe E.....	Oct. 31, 1935
27. McCarl, Angus L.....	Aug. 3, 1936
28. Davis, Roy.....	Aug. 3, 1936
29. Zerbach, Norman E.....	Aug. 6, 1936
30. Miller, Edward D.....	Sept. 9, 1936
31. Pantle, Alvin.....	Sept. 13, 1936
32. Watson, Homer C.....	Sept. 22, 1936
33. Montgomery, Fred.....	Sept. 23, 1936
34. Sinner, Walter C.....	Sept. 25, 1936
35. Walker, Earl F., Jr.....	Sept. 29, 1936
36. Walker, William H.....	Oct. 1, 1936
37. Holman, Orlo J.....	March 24, 1937
38. Gersch, Joseph L.....	June 25, 1937
39. Carr, James H.....	June 26, 1937
40. Lilley, John M.....	July 1, 1937
41. Cochran, Joseph F.....	July 15, 1937
42. Hearn, John P.....	July 16, 1937
43. Petersen, Wynn E.....	July 20, 1937
44. Harrison, John A.....	July 31, 1937
45. Carey, John P.....	Aug. 5, 1937

46. Lockwood, Harold C.....	Aug. 8, 1937
47. Fisher, Hayden S., Jr.....	Aug. 17, 1937
48. Ashe, Fitzhugh L.....	Aug. 18, 1937
49. Rayborn, Jack C.....	Aug. 29, 1937
50. Griffith, William E.....	Oct. 15, 1937

AUTO LOANS

REFINANCING - all forms of INSURANCE
A FRIENDLY, COURTEOUS, CONFIDENTIAL SERVICE
BY THE OLDEST AUTOMOBILE FINANCE CO.
IN SOUTHWEST WASHINGTON

Silsby Finance Co., Inc.

804 WASHINGTON ST. PHONE 85
VANCOUVER, WASHINGTON
OPEN EVENINGS BY APPOINTMENT

D'ARCY'S

Castle Florists

"Flowers for all Occasions"

Phone 1409 Opposite Castle Theatre

Patronize an Ex. U. P. Railroadman

VANCOUVER, WASHINGTON

Hamilton's Mortuary

302 W. Eleventh Street

VANCOUVER, WASHINGTON

MRS. E. A. HAMILTON

PHONE 1157

MALLORY HATS,

ARROW SHIRTS

PHOENIX HOSE

FASHIONCRAFT TIES

Lowey & Co.
MEN'S WEAR

414 S. W.
WASHINGTON ST.
BET.
4TH & 5TH

ALL UNION CLERKS

(CEC) WRIGHT

(CHUCK) AMEND

Hawthorne Service Garage

1312 S. E. HAWTHORNE BLVD.

FENDER AND BODY WORK R. R. EMPLOYEES BUSINESS
OVERHAULING AND REPAIRING APPRECIATED
STORAGE—DAY OR NIGHT PENNSYLVANIA TIRES
MOBILE—GAS AND OIL WILLARD BATTERIES
LUBRICATION, ACCESSORIES EAST 2004

FUEL

Wood, Coal, Briquets,
Pres-to-Logs

The Latest is COL-PAC made from high grade
Coal wrapped in paper, is clean and has no odor

SUNNYSIDE FUEL CO.

1435 S. E. 36th Ave. EAst 7996

S. & J. MEAT CO.

Wholesale "Quality Meats"

MANUFACTURERS OF

GOLD SEAL Smoked Meats, Sausage
Luncheon Loaves and Pig Pork Links

524 S. W. First Ave. ATwater 7481

Bagdad Service Station

LUBRICATION, BATTERY SERVICE
PENNSYLVANIA TIRES, UNION GASOLINE,
OILS AND GREASES

PALMER MOORE, MGR.
3575 S. E. Hawthorne Blvd. Tel. EAst 7996

Joe Weiner's

Portland's Leading Clothier
FOURTH and MORRISON

*This is the Right Time
To Dress Up!*

Fashion Park Clothes
Northbrooke Clothes
Stetson Hats
Florsheim Shoes
Arrow Shirts

Complete Clothes Service

**FOR WORK, SPORT
and DRESS**

OREGON WOOLEN STORE

8th and Main
KLAMATH FALLS, OREGON

NORTHERN PACIFIC TERMINAL COMPANY
CLERKS SENIORITY ROSTER

No.	Name	Date Entered Service
1.	Dunn, E. L.	May 25, 1907
2.	Anderson, J. O.	March 23, 1910
3.	Knoche, Geo.	April 21, 1910
4.	Subra, G. N.	Sept. 9, 1910
5.	Olson, Olie F.	Sept. 14, 1911
6.	Goble, E. C.	April 20, 1912
7.	Runciman, Alexander	April 26, 1912
8.	Forbes, W. A.	Sept. 11, 1912
9.	Legault, Leota	Sept. 25, 1912
10.	Campbell, Frank	March 1, 1913
11.	Esser, T. E.	April 1, 1914
12.	Westphal, F. C.	June 15, 1915
13.	Spengler, Eugene M.	March 5, 1916
14.	Kent, H. T.	March 7, 1917
15.	Lochner, J. F.	June 5, 1917
16.	Whittemore, L. R.	Oct. 8, 1917
17.	Abercrombie, Adelaide	Jan. 2, 1918
18.	Miller, A. J.	Feb. 3, 1918
19.	Walton, W. B.	Feb. 12, 1918
20.	Smock, Margaret	March 28, 1918
21.	Hudson, Elizabeth	June 15, 1918
22.	Mattson, Matt	July 27, 1918
23.	Siedow, Winifred	Aug. 15, 1918
24.	Timmer, A. A.	Aug. 20, 1918
25.	Nagle, H. H.	Sept. 4, 1918
26.	Hilands, A. H.	Sept. 5, 1918
27.	Howe, I. L.	Sept. 27, 1918
28.	Allen, Q. C.	Oct. 1, 1918
29.	Fox, L. C.	Oct. 14, 1918
30.	Kenney, Jos. A.	Nov. 30, 1918
31.	Anderson, H. B.	Dec. 1, 1918
32.	Greeley, Thomas	Dec. 9, 1918
33.	Preston, T. S.	Feb. 28, 1918
34.	Neihart, B. E.	March 29, 1919
35.	Adams, W. H.	April 16, 1919
36.	O'Day, Marie E.	May 23, 1919
37.	Grimm, W. G.	June 3, 1919
38.	Plymate, Brice	June 6, 1919
39.	Johnson, Leo	June 9, 1919
40.	Jones, Cecil C.	June 11, 1919
41.	Arnot, K. H.	June 23, 1919
42.	Ralston, P. R.	July 9, 1919
43.	Daily, E. W.	Aug. 1, 1919
44.	Hayes, Fred W.	Sept. 3, 1919
45.	Rigg, O. A.	Sept. 16, 1919
46.	Geres, J. J.	Sept. 27, 1919
47.	Stewart, N. E.	Sept. 28, 1919
48.	Bean, J. R.	Oct. 1, 1919
49.	Betzer, Leroy A.	Oct. 11, 1919
50.	Mueller, Carl	Oct. 24, 1919
51.	Fisher, Hayden S.	Dec. 17, 1919
52.	Cerny, Carl W.	Dec. 29, 1919
53.	Demorest, H. F.	March 14, 1920
54.	Adams, O. N.	March 19, 1920
55.	DeRosier, A. J.	May 5, 1920
56.	Testerman, Wm.	May 26, 1920
57.	McKittrick, S. A.	June 19, 1920
58.	Parker, Lee M.	July 1, 1920
59.	McCourt, Mary	July 4, 1920
60.	LaFortune, J. A.	July 5, 1920
61.	Nelson, Geo.	July 24, 1920
62.	Redmond, Edw.	Aug. 1, 1920
63.	Clarke, Allen R.	Nov. 4, 1920
64.	Drake, Clarence A.	July 24, 1921
65.	Anderson, A. S.	Sept. 12, 1921
66.	McDonald, Hugh F.	June 7, 1922
67.	Sabisch, Richard A.	June 21, 1922
68.	Weaver, Henry C.	June 30, 1922
69.	Hodge, Abram J.	July 3, 1922
70.	Morrill, Clarence G.	July 11, 1922
71.	Clow, Edwin L.	Aug. 5, 1922
72.	Moore, Harry R.	Sept. 9, 1922
73.	Zertanna, R. E.	Sept. 13, 1922
74.	York, C. R.	Sept. 24, 1922
75.	Propphit, James B.	Oct. 11, 1922
76.	Bass, W. H.	Oct. 12, 1922
77.	Jacobs, S. S.	Oct. 12, 1922
78.	Dolan, W. L.	Oct. 18, 1922
79.	Wheeler, W. J.	Oct. 20, 1922
80.	Barnes, B. C.	Dec. 9, 1922
81.	Wheeler, F. L.	July 4, 1923
82.	Brooks, H. E.	Sept. 5, 1923
83.	Stribling, Adolph	Sept. 27, 1923

No.	Name	Date Entered Service
84.	Harold, Walter	Oct. 11, 1923
85.	Powell, Arthur	Feb. 19, 1924
86.	O'Shea, Peter J.	Feb. 25, 1924
87.	Stafford, H. B.	March 22, 1924
88.	Blackburn, Chas. H.	April 3, 1924
89.	Tourville, M.	July 15, 1924
90.	Arents, A. E.	July 25, 1924
91.	Nell, L. H.	Sept. 8, 1924
92.	Mannion, A. P.	Dec. 9, 1924
93.	Means, James L.	Dec. 12, 1924
94.	Pendergrass, O. L.	Aug. 9, 1925
95.	Farley, A. A.	Sept. 1, 1925
96.	DeFehr, Myrtle S.	arch 8, 1926
97.	Lorimer, Geo.	June 10, 1926
98.	Renquist, Ernest	June 14, 1926
99.	Daugherty, C. E.	July 19, 1926
100.	Lottridge, H. W.	May 16, 1927
101.	Spellman, Mae E.	Feb. 12, 1928
102.	Darnall, Charles M.	Aug. 18, 1928
103.	Nelson, Harold W.	Jan. 2, 1929
104.	Furbee, Russell H.	Jan. 26, 1929
105.	Wellhauser, Frank H.	April 3, 1929
106.	Perry, Charles	Aug. 13, 1929
107.	Murray, Hilbert G.	Aug. 22, 1929
108.	Mellinger, C. P.	July 11, 1934
109.	George, Janet M.	Jan. 7, 1935
110.	Morrill, Clyde L.	Aug. 31, 1935
111.	Taylor, Wm. C.	Sept. 13, 1935
112.	Couse, A. E.	Sept. 14, 1935
113.	Kalk, Chas.	Oct. 5, 1935
114.	Fisher, T. W.	Oct. 14, 1935
115.	Lockwood, Carol T.	March 13, 1936
116.	White, Lloyd M.	March 13, 1936
117.	Olson, Harold B.	March 13, 1936
118.	Webb, Ross J.	March 13, 1936
119.	Stirling, Alan	March 14, 1936
120.	Tillson, Ralph C.	March 14, 1936
121.	Neff, Edward L.	March 14, 1936
122.	Dundon, Robert	March 14, 1936
123.	Smith, Frank M.	April 1, 1936
124.	Lewis, Vernon E.	April 3, 1936
125.	Slingerland, Geo. T.	April 8, 1936
126.	Allison, Chas. D.	April 29, 1936
127.	Haley, Hayden A.	May 17, 1936
128.	Farmer, James H.	May 20, 1936
129.	Cowley, Clifford T.	June 1, 1936
130.	Bainton, Wm. J.	June 1, 1936
131.	Byford, Edward H.	June 2, 1936
132.	Avelio, Frank	June 5, 1936
133.	Lewis, Robt. J., Jr.	June 5, 1936
134.	Ceglie, Joe	June 16, 1936
135.	Wilkie, Louis V.	June 20, 1936
136.	Craw, Robert C.	July 1, 1936
137.	Hamblet, W. J.	July 14, 1936
138.	McPhail, Allen R.	July 18, 1936
139.	McLennan, A. E.	Aug. 6, 1936
140.	Spottswood, K. H.	Aug. 19, 1936
141.	Martin, Blair F.	Aug. 21, 1936
142.	Greer, Frank H.	Sept. 3, 1936
143.	Westlake, Cobden W.	Sept. 3, 1936
144.	Robinson, Glenna B.	Sept. 3, 1936
145.	Rowell, Robert	Sept. 7, 1936
146.	Brecken, Wm. A.	Sept. 8, 1936
147.	Harpert, Ray M.	Sept. 10, 1936
148.	Costello, James J.	Sept. 10, 1936
149.	Wilson, Ray F.	Sept. 17, 1936
150.	Sabisch, Kurt H.	Sept. 17, 1936
151.	Swanson, Alvah F.	Sept. 21, 1936
152.	Skipton, Elto nE.	Sept. 21, 1936
153.	Platt, Donald L.	Oct. 9, 1936
154.	Delaney, Halsey R.	Oct. 23, 1936
155.	Kelly, Edward C.	Jan. 20, 1937
156.	Siekinger, M. F.	Feb. 1, 1937
157.	Arehart, Mark W.	Feb. 3, 1937
158.	Brooks, Harry E., Jr.	April 30, 1937
159.	Halstead, C. E.	May 16, 1937
160.	Stoutt, Theo. H.	June 3, 1937
161.	Lynch, Patrick	June 3, 1937
162.	Lofquist, Karl	June 9, 1937
163.	Truby, Eugene, Jr.	June 12, 1937
164.	Brantner, John	June 16, 1937
165.	Sandreck, P. F.	June 17, 1937
166.	Rollins, J. B.	June 18, 1937
167.	Bradshaw, Fred W.	June 19, 1937
168.	Hawkins, Chas. E.	July 6, 1937



**HART SCHAFFNER
& MARK CLOTHES**

DOBBS-STETSON-MALLORY HATS

ARROW SHIRTS

INTERWOVEN SOCKS

NUNN-BUSH SHOES

90-DAY CHARGE TERMS

SAM'L ROSENBLATT CO.

WASHINGTON AT BROADWAY, PORTLAND, ORE.

Jack's Super Service Station

PARKING RATES

MOHAWK GASOLINE, TIRES, TUBES
BATTERIES, OILS AND LUBRICATION

R. R. MEN'S PATRONAGE APPRECIATED

N. W. 5TH AVE. & GLISAN ST.
JACK CRAWFORD, PROP.

CARRUTHERS STORES, Inc.

FOOD STORES FOR YOUR CONVENIENCE

FRESH VEGETABLES GROCERIES & MEATS

No. 1 1338 S. W. JEFFERSON ST. BE. 9010

No. 4 839 S. W. 14TH AVE. BE. 6421

No. 5 3701 HAWTHORNE BLVD. EAST 6110

No. 6 1990 S. E. LADD AVE. EAST 0711

FREE DELIVERY SERVICE IS OUR MOTTO

"The House of Friendly Service"

DEALERS FOR

NASH — LAFAYETTE — WILLYS

Also Used Cars

Complete Automotive Service

Body and Fender Work Our Specialty

GAS, OILS, TIRES, ACCESSORIES

GOOD AT AUTO SERVICE

1823 N. Killingsworth MU. 2109 Portland, Ore.

UNION SHOP

DON'T SUFFER FROM BLURRED AND
PAINFUL VISION

FREE EYE EXAMINATION

Dr. Earl T. Snyder

OPTOMETRIST

Optical Dept. With Sears Roebuck & Co.

Broken Lenses and Frames Duplicated EAsT 8171

LOW PRICES ON GLASSES

STATION SERVICE SENIORITY ROSTER

JANUARY 1, 1938

PORTLAND DIVISION

No.	Name	Seniority Date
1.	Hollis, M. M.	May, 1898
2.	Barger, G. A.	Sept. 15, 1900
3.	Carper, A. A.	March 12, 1906
4.	Dooley, J. F.	Sept. 10, 1906
5.	Koupal, I. J.	April 5, 1907
6.	Davis, R. P.	Nov. 1, 1908
7.	Jackson, H. C.	Dec. 7, 1908
8.	Copenhaver, M. D.	March, 1909
9.	Luther, K. E.	Aug. 5, 1909
10.	Smith, E. H.	Sept. 1, 1909
11.	Sanders, M. L.	Sept. 15, 1909
12.	Blackburn, R. M.	Nov. 8, 1909
13.	Coleman, H. E.	April 2, 1910
14.	Stretch, C. F.	April 4, 1910
15.	France, M. J.	June 7, 1910
16.	Huntley, W. A.	April 22, 1912
17.	Burch, E. E.	May 10, 1912
18.	Large, M. L.	Sept. 25, 1912
19.	McBride, W. E.	April 1, 1913
20.	Nelson, O. H.	July 9, 1913
21.	Holmes, R. H.	Sept. 15, 1913
22.	Caldwell, F. H.	Sept. 27, 1913
23.	McClure, O.	Nov. 1, 1913
24.	Piatt, D. V.	Feb. 1, 1914
25.	Holt, L. H.	April 20, 1915
26.	Fegley, R. H.	April 26, 1915
27.	Girdner, A. T.	March 14, 1916
28.	Lutz, F. O.	April 7, 1916
29.	Heyser, H. W.	May 1, 1916
30.	Filley, R. L.	May 10, 1916
31.	Wright, J. W.	July 17, 1916
32.	Kelley, O. S.	Aug. 21, 1916
33.	Crafton, L. J.	Sept. 1, 1916
34.	Ireland, W. H. G.	Jan. 10, 1917
35.	Arehart, G. I.	Jan. 26, 1917
36.	Lucas, G. M.	Feb. 13, 1917
37.	Morely, G. F.	March 31, 1917
38.	Bradley, T. C.	April 12, 1917
39.	Olson, O. M.	April 18, 1917
40.	Baldwin, F. D.	June 17, 1917
41.	Mullin, A. L.	July 10, 1917
42.	Snider, H. E.	July 13, 1917
43.	Sorenson, A. T.	July 23, 1917
44.	Thom, E. E.	Aug. 7, 1917
45.	Bentley, S. W.	Aug. 12, 1917
46.	Mannel, L. J.	Aug. 16, 1917
47.	Price, P. C.	Aug. 24, 1917
48.	Baker, C. V.	Oct. 30, 1917
49.	Senter, L. B. L.	Oct. 30, 1917
50.	McClure, C. B.	Dec. 7, 1917
51.	Bellows, H. F.	Dec. 21, 1917
52.	Hill, J. F.	Jan. 7, 1918
53.	Alley, F. M.	Jan. 15, 1918
54.	McNeil, E. D.	Feb. 25, 1918
55.	Blake, W. G.	June 20, 1918
56.	Humphrey, J. P.	June 28, 1918
57.	Muchheit, E. F.	June 28, 1918
58.	McCabe, C. R.	July 1, 1918
59.	Armes, E. W.	July 2, 1918
60.	Cogill, M. G.	July 3, 1918
61.	Howard, J. L.	July 22, 1918
62.	Kester, F. K.	July 23, 1918
63.	Farrow, H. U.	July 28, 1918
64.	Richardson, J. S.	July 29, 1918
65.	Klemm, R.	July 29, 1918
66.	Roberts, R. R.	Aug. 1, 1918
67.	Fowler, C. H.	Aug. 8, 1918
68.	Wimer, G. C.	Aug. 11, 1918
69.	Fry, F. D.	Aug. 14, 1918
70.	Minor, E. O.	Aug. 30, 1918
71.	Gay, S. A.	Sept. 1, 1918
72.	Jensen, R. F.	Sept. 16, 1918
73.	Scharbach, E. P.	Sept. 25, 1918
74.	Custer, W. B.	Oct. 12, 1918
75.	Messinger, C. R.	Nov. 25, 1918
76.	Mishler, A. P.	Dec. 10, 1918
77.	Hartsook, L. P.	Dec. 12, 1918

**PAY LATER
FIX YOUR CAR NOW**



Expert auto repairing.

Our finance plan permits you to pay as you ride. No interest if paid within 60 days; 6% interest after 60 days. Investigate now.

Brakes Tested Free with 4-Wheel Brake Tester

We Specialize in Rebuilding Wrecks

Body and Fender Work

R. R. Employees Business Appreciated

C. J. FORD
Auto Service
E. 6th & Madison LA. 1994

INSIST ON

Hirsch-Weis
OUTDOOR CLOTHING

for WORK or SPORT

Ton-Tested Overalls and Work Shirts

Campbell Dress Shirts

HIRSCH-WEIS Stag Coats and Mackinaws

HIRSCH-WEIS Water-Repellents

White Stag Ski Togs and Sport Jackets

UNION MADE IN OREGON

Ask Your Dealer

No.	Name	Seniority Date
78.	Bolander, J.	Jan. 1, 1919
79.	Velten, G. R.	March 5, 1919
80.	McMurdo, C.	Sept. 1, 1919
81.	Jennings, J. H.	Sept. 9, 1919
82.	Ellenburg, G. W.	Sept. 20, 1919
83.	Widener, W. P.	Otc. 3, 1919
84.	Mitchell, J. E.	Oct. 16, 1919
85.	McKinney, L. M.	Nov. 1, 1919
86.	Clemens, G. R.	Nov. 11, 1919
87.	Randle, E. O.	Dec. 4, 1919
88.	Dole, E. E.	March 11, 1920
89.	Humphreys, R. A.	March 13, 1920
90.	Woodward, J. L.	April 16, 1920
91.	Lundeen, H. A.	June 18, 1920
92.	Frazer, R. L.	July 12, 1920
93.	LeFors, H. C.	Aug. 31, 1920
94.	Kelly, R. B.	Sept. 16, 1920
95.	Dickey, C. D.	Sept. 18, 1920
96.	Bennett, W. D.	Sept. 21, 1920
97.	Maguren, C. A.	April 7, 1921
98.	Davenport, H. M.	Jan. 16, 1922
99.	Habenau, W. V.	April 22, 1922
100.	Hull, V. L.	June 20, 1922
101.	Jessup, J. O.	July 5, 1922
102.	Olson, O. H.	July 26, 1922
103.	McGlasson, W. E.	Aug. 10, 1922
104.	Painter, F. A.	Aug. 21, 1922
105.	Lucas, A. C.	Sept. 9, 1922
106.	True, B. L.	March 3, 1923
107.	isher, C. A.	April 2, 1923
108.	Hagg, F. O.	Sept. 12, 1923
109.	Ash, G. E.	Sept. 19, 1923
110.	Hewitt, J. B.	Aug. 14, 1924
111.	Hogan, E. T.	March 7, 1926
112.	Fisher, D. G.	June 27, 1927
113.	Caviness, A. C.	April 11, 1934
114.	Pruett, J. R.	June 25, 1934
115.	Rasmussen, N. R.	July 11, 1934
116.	Day, J. F.	July 26, 1934
117.	Nugent, V. J.	Sept. 7, 1934
118.	Schrader, W. J.	Oct. 20, 1934
119.	Edholm, C. M.	May 17, 1935
120.	Van Duyn, J. H.	June 28, 1935
121.	East, F.	July 8, 1935
122.	Migloretto, A. J.	July 15, 1935
123.	Alley, T. E.	July 20, 1935
124.	Johnstone, W. R.	Aug. 1, 1935
125.	Brandon, D.	Aug. 1, 1935
126.	Garber, J. C.	Aug. 9, 1935
127.	Carper, R. B.	Aug. 12, 1935
128.	Merritt, R. L.	Sept. 2, 1935
129.	Buck, H. D.	Sept. 5, 1935
130.	Rabenau, H. S.	Sept. 6, 1935
131.	Robin, H. U.	Sept. 10, 1935
132.	Howard, J. R.	Jan. 29, 1936
133.	Morasch, C.	Feb. 1, 1936
134.	McCoy, G. H.	Feb. 17, 1936
135.	Reason, L. H.	March 2, 1936
136.	Rogers, H. S., Jr.	March 4, 1936
137.	Walker, C. H.	April 7, 1936
138.	Humphreys, C. A.	April 10, 1936
139.	Holgate, L. L.	April 16, 1936
140.	Honig, D. A.	April 16, 1936
141.	Mullin, C. W.	May 12, 1936
142.	Meyers, F. L.	May 18, 1936
143.	Harvey, T. W.	June 6, 1936
144.	Prochnow, R. M.	June 12, 1936
145.	Schneider, F. A.	July 1, 1936
146.	Berry, H. T.	July 7, 1936
147.	Hoffman, W. S.	July 11, 1936
148.	Monohan, L. C.	July 27, 1936
149.	Cole, S. A.	July 28, 1936
150.	Wade, D. S.	Aug. 1, 1936
151.	Thompson, W. F.	Aug. 2, 1936
152.	Johnson, W. A.	Aug. 3, 1936
153.	Riley, F. C.	Aug. 3, 1936
154.	Welton, R. J., Jr.	Aug. 5, 1936
155.	Hunt, R. H.	Aug. 10, 1936
156.	Lister, L.	Aug. 10, 1936
157.	White, C. M.	Aug. 17, 1936
158.	Cooper, E. G.	Aug. 21, 1936
159.	Bikman, S. J.	Aug. 25, 1936
		Aug. 28, 1936

Piggly Wiggly

Home Owned Stores

*"There's One In Your
Neighborhood"*

*Portland's 100% Union
Department Store*

ROBERTS BROS.

S. W. 3rd Ave. and Morrison St.

Featuring Leading Lines of
Men's Clothing, Hats, Underwear

Furnishings, Shoes

Also Women's Ready-to-Wear—Yardage
Goods—Domestic and Dress Accessories

Homefurnishings and Major Electric
Appliances

No.	Name	Seniority Date
160.	Tenant, R. W.	Sept. 4, 1936
161.	Baker, N. V.	Sept. 5, 1936
162.	Whitaker, F. B.	Sept. 11, 1936
163.	Klug, H. W.	Sept. 18, 1936
164.	Jones, W. S.	Sept. 19, 1936
165.	Beals, R. M.	Sept. 22, 1936
166.	King, N. W.	Sept. 22, 1936
167.	Durbin, S.	Sept. 26, 1936
168.	Schneider, A. V.	Oct. 1, 1936
169.	Fletcher, C. E.	Oct. 3, 1936
170.	Pearson, R. B.	Oct. 6, 1936
171.	Hutchinson, A. L.	Oct. 6, 1936
172.	LaStrapes, E. B.	Oct. 17, 1936
173.	Hegeberg, R. G.	Oct. 23, 1936
174.	Scott, E. C.	Dec. 12, 1936
175.	Kirschner, L. F.	Dec. 16, 1936
176.	Neilsen, W. A.	Dec. 17, 1936
177.	Trentin, E. E.	Dec. 23, 1936
178.	Glad, F. A.	Jan. 6, 1937
179.	Stone, D. B.	Jan. 11, 1937
180.	Brown, R. L.	Jan. 18, 1937
181.	Dunn, I. M.	Jan. 25, 1937
182.	Cotter, A. R.	Jan. 30, 1937
183.	Powell, rt. O.	Feb. 24, 1937
184.	Erickson, J. W.	March 23, 1937
185.	Eisenman, W. C.	April 26, 1937
186.	Sanford, G. A.	May 4, 1937
187.	Chiotti, A. S.	May 10, 1937
188.	Jackson, W. B.	May 13, 1937
189.	Moe, W. G.	May 18, 1937
190.	Aydelott, C. L.	May 22, 1937
191.	Bowser, D. N.	May 28, 1937
192.	Lemoine, W. R.	May 29, 1937
193.	Crandall, H. M.	June 2, 1937
194.	Meyer, P. J.	June 3, 1937
195.	Houston, R. C.	June 7, 1937
196.	Inglis, S. P.	June 9, 1937
197.	Muller, E. A.	June 10, 1937
198.	Foster, J. A.	June 15, 1937
199.	McElroy, E. C.	June 17, 1937
200.	Oberson, L. J.	June 22, 1937
201.	Yokum, C. L.	July 3, 1937
202.	Frisbie, J. K.	July 12, 1937
203.	Toomey, W. F.	July 16, 1937
204.	Main, J. M.	July 17, 1937
205.	Balcolm, R. J.	July 21, 1937
206.	Weichlein, D. T.	July 21, 1937
207.	Shepherd, R.	July 30, 1937
208.	Sherwin, G. R.	Aug. 3, 1937
209.	Muller, L. R.	Aug. 13, 1937
210.	Bartlet, R. B.	Aug. 14, 1937
211.	Sorenson, A. M.	Aug. 31, 1937
212.	Stark, D. U. T.	Aug. 31, 1937
213.	Fisher, L. W.	Sept. 8, 1937
214.	Nasman, E. W.	Sept. 17, 1937
215.	Walker, J.	Sept. 18, 1937
216.	Goldbeck, A. P.	Sept. 18, 1937
217.	Montgomery, R. A.	Sept. 20, 1937
218.	Nicholson, J. P.	Sept. 22, 1937
219.	McGarvey, H.	Sept. 29, 1937
220.	Stevens, W. C.	Oct. 17, 1937

FRANK NAU Prescription Pharmacy

"WE NEVER CLOSE"

BEACON 7211

519 S. W. 6TH AVENUE PORTLAND, ORE.

WHAT Is the Cost of Low Priced GLASSES?

Your eyes and your entire nervous system pay for bargain glasses.

Correctly prescribed glasses after a complete and careful examination may cost you slightly more, but the saving of vision and nervous energy will be great.

Dr. James B. Richardson, Opt. D.
MONTGOMERY WARD & CO. BUILDING

For Appointment Phone
BEacon 3121, Extension 361

Buy Oregon Products

Oregon Textile Mills

Suits, Overcoats, Zipper Jackets
and Uniforms Made to Order

Specializing in Hand Tailored Uniforms
for the Railroad Men

They are UNION Made

BRoadway 3359 Portland 4th at Couch

SOUTHERN PACIFIC CLERKS' SENIORITY ROSTER

JANUARY 1, 1938

PORTLAND DIVISION

No.	Name	Seniority Date
1.	Sayers, S. S.	Aug. 1, 1906
2.	Green, D. L.	Jan. 24, 1907
3.	Ellicott, R.	May 4, 1910
4.	Hutt, G. R.	July 1, 1910
5.	Lauer, F.	March 1, 1911
6.	Morse, G.	March 28, 1912
7.	Berke, L. J.	June 3, 1912
8.	Hart, F. E.	June 18, 1912
9.	Sanford, G. E.	Aug. 28, 1912
10.	Armbruster, E. J.	Sept. 12, 1912
11.	Catlow, C. E.	Jan. 1, 1913
12.	Campbell, I. W.	April 1, 1913
13.	Barr, J. R.	April 21, 1913
14.	Fishburn, P. H.	May 3, 1913
15.	Olson, F.	July 7, 1913
16.	Arronson, A.	June 8, 1915
17.	Fischer, P.	Feb. 23, 1916
18.	Costa, N.	Feb. 29, 1916
19.	Kenney, J. P.	May 23, 1916
20.	Madigan, M. L.	June 19, 1916
21.	Klineman, W. F.	Oct. 17, 1916
22.	Karg, E.	Feb. 19, 1917
23.	Scheider, P.	April 20, 1917
24.	McGrath, P.	Oct. 4, 1917
25.	Edwards, M. V.	Nov. 22, 1917
26.	Fitch, A. M.	Jan. 10, 1918
27.	Svenson, H. J.	Aug. 15, 1918
28.	Isom, H. B.	Oct. 15, 1918
29.	Latta, J. C.	Feb. 26, 1919
30.	Sprague, D. W.	April 23, 1919
31.	Beattie, W.	May 23, 1919
32.	Swinney, J. W.	June 2, 1919
33.	Eddy, R.	July 14, 1919
34.	Allen, W. L.	Aug. 11, 1919
35.	Cherrington, E. H.	Aug. 25, 1919

HAWKINSON

Tread Your Tires

Put Lively New Tire Mileage into your
Good Smooth Tires

Ask for Hawkinson Tread — Not a Retread —
Not a Re-Cap

Silent All Rib Tread for Hard Surface Driving
All Road Tread for Rough Going

Hawkinson Tread Service

505 N. E. Grand Ave. Phone EAsT 2472

Portland, Ore.

SPEEDWAY LUBRICATORS

Oils, Greases, Tires and Accessories

RAILROAD MEN TRADE HERE

JAMES CAPUTO, Manager

1131 S. E. Clay at 12th Phone EAsT 4636

TUCKER COFFEE CO.

Wholesale

COFFEE, TEA, SPICES, EXTRACTS

ATwater 5913

1115 S. W. 4th Ave. Portland, Oregon

Phone ATwater 3639

KELLY'S

Olympian Co.

521 Washington Street

CIGARS, DRINKS, CANDIES

Restaurant in Connection

Portland, — Oregon

BEFORE YOU BUY BE SURE YOU TRY

Hudson Terraplane

NO. 1 CAR OF THE LOW PRICE FIELD

Hudson 6's and 8's

NO. 1 CAR OF THE MEDIUM PRICE FIELD

Cohen-Anderson Motor Co.

HUDSON TERRAPLANE DISTRIBUTORS

S. W. 14TH AND ALDER ST. TEL. BEACON 6221

AUTOMOTIVE MERCHANTS SINCE 1905

36. Carper, C. L.	Sept. 17, 1919
37. Hahnfeld, F. W.	Sept. 23, 1919
38. Blair, J. W.	April 18, 1920
39. Baker, E. L.	June 7, 1920
40. Gross, R. D.	June 28, 1920
41. Nelson, E. V.	May 12, 1922
42. Hammett, L. C.	July 13, 1922
43. Stady, L.	Oct. 9, 1922
44. Stady, F. W.	Oct. 14, 1922
45. Haysany, L. E.	May 7, 1923
46. Gould, R. N.	July 19, 1926
47. Johansen, V. E.	June 17, 1933
48. Lindow, A.	July 21, 1933
49. Schroll, J. P.	March 2, 1934
50. Klinder, W. E.	March 2, 1934
51. Henry, M.	March 3, 1934
52. Jaeckel, C. O.	March 5, 1934
53. Cross, F. P.	March 19, 1934
54. Robertson, E. A.	April 15, 1934
55. Dorney, A. J.	May 17, 1934
56. Bruhn, O.	May 17, 1934
57. Banz, W. E.	May 17, 1934
58. Meyer, J.	May 17, 1934
59. Bach, G. L.	May 21, 1934
60. Evanson, C. C.	May 29, 1934
61. Cahrke, W. H.	June 4, 1934
62. Cocker, A. T.	June 20, 1934
63. Walton, G. W.	June 22, 1934
64. Decius, F.	June 29, 1934
65. Woodard, F. A.	June 30, 1934
66. Brand, L.	June 30, 1934
67. Phillips, S. C.	July 19, 1934
68. O'Neil, E. F.	July 19, 1934
69. Popma, Wm.	July 26, 1934
70. Grant, Wm. A.	Aug. 16, 1934
71. Luckett, D. M.	June 10, 1935
72. Nichols, H.	July 16, 1935
73. Livesay, V. W.	July 16, 1935
74. Miller, B. A.	July 18, 1935
75. Shields, E.	Aug. 23, 1935
76. Nichols, W. J.	Aug. 28, 1935
77. Bentley, F. W.	Aug. 29, 1935
78. Martinson, W. G.	Sept. 3, 1935
79. Chambers, A. E.	Sept. 3, 1935
80. Hess, L. V.	Sept. 3, 1935
81. McVey, G. J.	Sept. 3, 1935
82. Gaunt, C. W.	Sept. 3, 1935
83. Griffin, L. E.	Sept. 3, 1935
84. Burke, W. D.	Sept. 10, 1935
85. Baldwin, W. H.	Oct. 8, 1935
86. Shelley, T. T.	Jan. 27, 1936
87. Schroll, Jess.	Jan. 29, 1936
88. Costa, Joe.	Feb. 3, 1936
89. Jones, D. T.	Feb. 4, 1936
90. Burton, Jack	April 20, 1936
91. Kageler, E. E.	April 23, 1936
92. Ussing, Edw.	April 23, 1936
93. Kallgren, V. E.	May 19, 1936
94. Isom, Irvin H.	May 19, 1936
95. Parrott, Dorothy	May 12, 1936
96. Johnson, A. E.	June 5, 1936
97. Desbrisay, D. C.	July 18, 1936
98. Weber, J. R.	July 20, 1936
99. Serrano, Mike.	July 31, 1936
100. King, L. G.	Aug. 10, 1936
101. Donnell, W. F.	Sept. 1, 1936
102. Ballard, C. E.	Sept. 1, 1936
103. Brennan, D. J.	Sept. 1, 1936
104. Barnes, J. F.	Sept. 1, 1936
105. Purkerson, E. L.	Sept. 4, 1936
106. Sexton, W. L.	Sept. 4, 1936
107. Ritz, E. J.	Sept. 8, 1936
108. Short, W. J.	Sept. 19, 1936
109. Schierman, Alex.	Sept. 22, 1936
110. Stuelnagel, B. P.	Sept. 22, 1936
111. McRae, J. A.	Sept. 23, 1936
112. Glover, R. W.	Sept. 23, 1936
113. Kenney, A. R.	Sept. 24, 1936
114. Barber, A. J.	Sept. 24, 1936
115. Clement, A. B.	Sept. 24, 1936
116. Drake, J. A.	Sept. 25, 1936
117. Stein, O. R.	Sept. 25, 1936
118. Rich, R. L.	Sept. 28, 1936
119. Carsner, E. A.	Oct. 3, 1936



Sanitone Cleaning

Makes Clothes Wear Longer,
Look Better, Fit Better

Try it. If you don't agree it's the finest cleaning
you've ever seen, we'll gladly cancel the charges

JUST
PHONE

L.A. 1114

OUR DRIVER
WILL CALL

RAWLINSON'S
Aladdin
CLEANERS-DYERS-HATTERS

Remember this about
FAHEY - BROCKMAN CLOTHING:-

1. SUPERIOR FABRICS
2. UP-TO-THE-MINUTE STYLING
3. FINER TAILORING
4. LONGER WEAR

"Ask the man who wears 'em"

At a genuine saving of at least \$10

\$20 \$25 \$30

Fahey-Brockman

SIXTH & WASHINGTON
PORTLAND

THIRD & PINE
SEATTLE

Logan Oldsmobile Co.

1005 S. E. Grand Ave. West 9th & Burnside

Portland's EXCLUSIVE OLDSMOBILE DEALER

Oldsmobile The 1938 Style Leader

Portland's Outstanding Used Car

Bargain Center

Your Home deserves a Good Roof

RAILROAD MEN

Protect Your Home With El Rey Slate Surfaced
Shingles—Applied Under Authorization.

Pay as you are paid—call us and save
Salesman's Commission

Wood Shingles—Gutter Work
Personal Service On All Work

CALL BEACON 4313

Three Thousand Satisfied Home Owners in 18
years of Roofing Service in Portland

Walker & Roach

700 S. W. Front

If no answer call
SELLWOOD 1569

120.	Helming, G. E.	Oct. 5, 1936
121.	Tyner, R. E.	Oct. 5, 1936
122.	Johnson, G. J.	Oct. 5, 1936
123.	Ierulli, F. J.	Oct. 6, 1936
124.	Ierulli, M. F.	Aug. 12, 1937
125.	Wheeler, W. R.	Aug. 12, 1937
126.	Pengra, F. E.	Aug. 16, 1937
127.	Jenkins, M. R.	Aug. 19, 1937
128.	McParland, A. F.	Sept. 10, 1937
129.	Torson, T. B.	Sept. 13, 1937
130.	Clark, J. B.	Sept. 13, 1937
131.	Connell, W. R.	Sept. 13, 1937
132.	Heath, L. R.	Sept. 23, 1937

JULY 1, 1937

PORTLAND DIVISION

No.	Name	Passenger Date	Freight Date
1.	Roth, A. C.	4- 9-00	
2.	Hunter, F. H.	5-11-02	
3.	Singleton, G. R.	4-15-03	
4.	Daugherty, G. D.	11- 5-06	6- 1-26
5.	Wright, E. L.	12- 2-06	
6.	Overton, J. T.	1-17-07	6- 1-26
7.	Stinson, D. E.	4-11-07	
8.	Griffis, W. E.	4-11-07	
9.	Scruggs, N. P.	5-14-07	
10.	Young, M.	5-21-07	
11.	Ashby, J.	9-29-07	
12.	Francis, E. R.	9-19-08	
13.	Lafayette, J. L.	12-30-08	
14.	Feikert, F. E.	1-12-09	
15.	Wilhelm, W. E.	3- 1-09	6- 1-26
16.	Francis, C. H.	3-21-09	
17.	Graham, J. W.	6-21-09	6- 1-26
18.	Rix, G. J.	10- 7-09	
19.	Garvin, J. H.	4- 6-10	
20.	Woolsey, E. P.	4-22-10	
21.	Akin, C. F.	6- 8-10	6- 1-26
22.	Sheldon, E.	8-10-10	
23.	Wilbanks, E.	4-11-11	6- 1-26
24.	Hiett, C. E.	3-30-12	
25.	Hogg, J.	5- 2-12	6- 1-26
26.	Stephenson, D. T.	5- 3-12	6- 1-26
27.	Barker, Ed.	5- 3-12	
28.	Pickthall, T. W.	5- 3-12	
29.	Otterson, A. O.	6-30-12	
30.	Cole, A. R.	3- 7-13	6- 1-23
31.	Dole, C. C.	4- 4-13	
32.	Smith, C. E.	5-23-13	6- 1-26
33.	O'Connor, Geo.	7- 4-13	6- 1-26
34.	Woodin, R. L.	1-20-14	
35.	Patton, H. D.	4-10-14	6- 1-26
36.	Douglas, J. E.	6-13-14	6- 1-26
37.	Allen, M. S.	5-11-16	6- 1-26
38.	Smith, C. R.	7- 1-16	
39.	Simon, I. D.	12- 6-16	6- 1-26
40.	Sellwood, W. H.	3- 2-16	
41.	Wood, H. C.	3-27-17	6- 1-26
42.	Chamberlain, R. R.	9- 7-17	6- 1-26
43.	Perry, V. H.	10-14-17	
44.	Daudel, G. H.	10-16-17	6- 1-26
45.	Hogan, J. H.	12-14-37	6- 1-26
46.	Goulet, W. H.	8- 7-18	6- 1-26
47.	Bacon, W. C.	1-15-20	6- 1-26
48.	Heimbucher, R.	2-20-20	6- 1-26
49.	Howell, E. M.	3- 5-20	6- 1-26
50.	Burhans, N.	8-14-20	
51.	Shoush, G. R.	12- 1-21	6- 1-26
52.	Johnson, W. C.	8- 4-22	6- 1-26
53.	King, J. T.	5-24-23	

Dodge Brothers Motor Cars

PLYMOUTH MOTOR CARS

Dodge Trucks and Commercial Cars

W. W. SHIPLEY CO.

TWO STORES

WEST SIDE

W. BURNSIDE AT 16TH

BR. 6515

EAST SIDE

N. E. GRAND AVE.
AT E. COUCH

EAST 0103

TIRES

TUBES

BATTERIES

RADIOS

THE GOODRICH SAFETY SILVERTOWN

WITH

THE LIFE - SAVER GOLDEN PLY

**GOODRICH SILVERTOWN
STORES**

R. W. GRIFFIN, Mgr.

Union and S. E. Stark St.

Phone EAst 4148

Dr. Reed
FASHION SHOES

FOR

MEN AND WOMEN

I H L E ' S

FOOT COMFORT CLINIC

736 S. W. Morrison nr. Park BR. 3056

SUITS

OVERCOATS

SHOES-BOOTS

HATS

SHIRTS

UNDERWEAR

RAIN CLOTHING

BREECHES

AT GREAT SAVINGS

ARMY RETAIL STORES

534 S. W. SECOND AVE., PORTLAND, ORE.

513 MAIN ST., NEAR 6TH, VANCOUVER, WASH.

WOOL O' THE WEST

VIRGIN WOOL

BLANKETS and ROBES

Made in the West from Western Wools
for the Western trade

Portland Woolen Mills, Inc.

Baltimore & Bradford Portland, Ore.

Local Watch Inspector Union Pacific, S.P. & S.R.R.
N. P. T. Co.

DILLEN ROGERS

ESTABLISHED 1910

JEWELER & OPTICIAN

Killingsworth and Albina Avenue Portland, Ore.

MURdock 6242

Clothes

MADE TO YOUR
MEASURE AND ORDER

The ultimate in fine fitting clothes, comfort and satisfaction is secured through having your clothes individually tailored by Nash. It costs no more to enjoy the best. Let me explain the Nash personal clothing service at your convenience without obligation on your part. Authentic new styles . . . over 400 fine new fabrics.

THE A. NASH CO. CUSTOM TAILORED CLOTHES
S. J. HALPIN
Member O. R. T.

204 Stevens Bldg. Telephone AT 7655
PORTLAND, OREGON

L. E. GRILL, MECHANIC ERNIE DRAKE

DEPENDABLE AUTO SERVICE

1944 N. LOMBARD, COR. DENVER

General Petroleum Products, Gas, Oils
Reboring, Ignition, General Repairing
Auto Tops and Upholstering

R. R. EMPLOYEES PATRONAGE APPRECIATED
MURDOCK 4098 PORTLAND, ORE.

J. J. KADDERLY CO.

HARDWARE
CUTLERY
TOOLS

REPUTABLE GOODS FOR PAST SIXTY YEARS
AT REASONABLE PRICES

FIRST AND ALDER ST. PORTLAND, ORE.

Bus. Phone EAsT 3032 Res. Phone TAbor 0759

PATRONIZE AN EX B. A. R. E. MAN

Billing's Body Works

Specializing in

COMPLETE BODY AND FENDER WORK

WILTON M. BILLINGS

1303 S. E. 6th Ave. Res. 1747 S. E. 52nd Ave.

AL'S UNION SERVICE

GAS, OILS, GREASES AND
ACCESSORIES
76 GASOLINE
TRITON MOTOR OIL

2614 MAIN ST., VANCOUVER, WASHINGTON

MOORE'S DRESS SHOP

LEADERS IN

Women's Apparel, Dresses, Suits, Coats,
Lingerie, Millinery, Hosiery, Bags

"Fashion's Favorites"

1017 MAIN
VANCOUVER, WN.

TILLAMOOK BLDG.
TILLAMOOK, ORE.

Miller's Associated Station

Factory Specified Lubrication
Firestone Tires, Batteries,
Recharging & Accessories

LOMBARD & OSWEGO, PORTLAND, ORE. UN. 3951

Phone AT 1639

AT 1639

BARON'S SHOE STORE

Shoes and Hosiery for the Entire Family
W. L. Douglas and Bergmann's Union Made Shoes
for Men and Young Men

Health Support Shoes for Ladies and
Growing Girls

Buck-Hect Aropedic Work Shoe
Sizes 5 to 14—AA to EEE

609 S. W. Fourth Ave., Bet. Morrison and Alder
PORTLAND, OREGON

City Dairy

Phones ATwater 0245 - 0246

2101 S. W. 2nd Ave. Portland, Oregon

JACK & VAN, Inc.

DIAMOND TIRES, TUBES, AUTO
ACCESSORIES AND BATTERIES

TERMS TO SUIT—PAY A LITTLE EACH WEEK

1300 S. W. MORRISON STREET

COR. 13TH

TEL. BEACON 1191

Tom Tracey's CIGAR STORE

Public Service Building

A Gentleman's Smoke Shop

Special Inducements to Railroadmen and Families

Griffin's Cafeteria

214 S. W. BROADWAY

QUALITY FOOD

100% UNION

Women Cooks

Reasonable Prices

PHONE UNIVERSITY 0853

J. R. CHAUNCEY

WATCHMAKER AND JEWELER

R. R. EMPLOYEES PATRONAGE APPRECIATED

8651 N. JERSEY ST. PORTLAND, ORE.

HILL'S GROCERIES

STAPLE & FANCY GROCERIES, FRESH MEATS
VEGETABLES, CIGARS, CIGARETTES, TOBACCOS

RAILWAY EMPLOYEES PATRONAGE APPRECIATED

4112 S. E. 26th Ave. Tel. SELLwood 1187

HILDUR HEGSTROM

SIGNE KELLY

HOYT CAFE

HOTEL HOYT

HOME COOKING

TRY OUR SPECIAL LUNCH

Railway Employees Patronage Appreciated

525 N. W. 6th Avenue Portland, Oregon

BRAKES and LIGHTS Adjusted
Motors Tuned - Up

Rain Swipes Repaired

SHELDON'S

EA. 7444 S. E. 12TH & CLAY ST.

FOUNTAIN PENS

All standard makes and
all facilities for repairs

The J. K. Gill Co.

S. W. Fifth Avenue at Stark

WHERE TO PARK

Drive in

FOOT OF MORRISON

FOOT OF ALDER

FOOT OF OAK STREET

FOOT OF ASH STREET

RAILROAD MEN'S PATRONAGE APPRECIATED

ATWATER 3985

R. J. BELLAND, MGR.

ZEERO ICE

SOLD BY

Portland Ice & Cold Storage Co.

AND

Ice Delivery Company

BR. 3505

BR. 2611

DeYoung and Vermeul

DIESEL OIL DISTRIBUTING CO.

Broadway Independent Service Station

Richfield Gasoline, Oil, Tires, Tubes, Batteries

Cor. N. E. 1st and Broadway Portland, Ore.

Phone GARfield 0504

Brooks Service Station

GASOLINE, OILS, GREASES

Corner Interstate Avenue and Shaver Street

Phone GARfield 6714

Portland, Oregon

Bowen Signal Service Station

WASHING-POLISHING-SIMONIZING

S. E. Union and Hawthorne Phone EAst 2087

"Nige" Bowen

We are Independent

C. J. VIAENE

SIGNAL PRODUCTS AND SERVICE

26TH & POWELL BOULEVARD

SE. 0286

PORTLAND, OREGON

YOUR NEIGHBORHOOD

Signal Service Station

Complete Maintenance of Your Car

Courteous and Experienced Service

39th and East Stark

J. CHAPPELL, Prop.

COHN BROS FURNITURE

Anything you need in the line of Furniture,
Rugs, Ranges, Radios, etc.

EASY TERMS

East 12th & Hawthorne

LA. 1166

Open Evenings



CONGR Twin Globe LANTERN

R. R.-Standard for 20 Years

No. 11, with Rigid Rattan Bale, is a Real Switchmen's Lantern. The No. 7 has adjustable Rubber Grip bale that can be made rigid, finished in rustless White Metal. **\$2.25**

CLUB (Three for.....) **\$5.10**

PRICES (Six for.....) **9.90**

Either in bright nickel..... **\$2.95**

with battery and globes, add 75c each.

Money with order. We pay postage.

CONGR LANTERN CO.

432 S. E. 6th Ave.

Portland, Ore.

LUBLINER'S Inc.

ANYTHING IN FLOWERS

at Popular Prices

616 S. W. Morrison St. BEacon 0753

Portland Hotel Building

WALLY'S LUNCH

SANDWICHES, LUNCHES

POPULAR BEVERAGES IN BOTTLES AND ON TAP

CHOICE WINES

OPP. MONTGOMERY WARD'S

27TH & VAUGHN ST.

PORTLAND, ORE.

"IT'S WISE TO CHOOSE A SIX"



FRANK CHEVROLET CO.

Tel. WA. 8444 5131 N. E. Union Ave.

Portland, Oregon

PHONE MURDOCK 1254

M. E. "MIKE" BRADFORD SERVICE STATION

2684 N. W. VAUGHN ST.

DOYLE RIDDLE, MGR.

MURDOCK 1058

Interstate Garage

SHELL and GASCO GASOLINE
and SHELL OIL

Body and Fender Work and Auto Painting

5212 N. E. UNION AVE. AT SUMNER ST.

MURDOCK 1058 PORTLAND, ORE.

GRIFFITH RUBBER MILLS

N. W. 22ND & NICOLAI STREETS

"Twenty-Six Years of Service"

SEE US!

General Electric Appliances Gasoline, Oil
Lubrication

Kelly Tires - Griffith Retreads

Rulo Automatic Injector

REMOVES CARBON, INCREASES POWER
SAVES GASOLINE

RULO SERVICE CO.

AT

ROTOWAY STATION

N. E. UNION & BURNSIDE

PHONE LA. 1163

CHAPMAN BROS.

**Gasoline, Oils, Greasing
Washing, Tires, Batteries**

WE CALL FOR AND DELIVER

"HAVE YOUR CAR SERVED BY EXPERTS"

Phone East 4066

EAST 12TH AND BURNSIDE

Vana's Quality Auto Painting Co.

Joseph Vana

Phone East 2815

E. Davis at 14th Ave.

Portland, Oregon

Auto, Truck and Trailer Repairing and Welding
Battery Charging, Ignition Experts

**WOOLLEY & MOHLAND
GARAGE**

100% UNION

Patronize an Old R. R. Man

Frank H. Woolley

Walter G. Mohland

8824 N. Jersey

UNiversity 3963



MEN

Have Your Next Suit
CUSTOM TAILORED

FROM THE LARGEST
STOCK OF IMPORTED &
DOMESTIC WOOLONS ON
THE PACIFIC COAST

Suits from \$50

John Noce

PORTLAND'S
LEADING TAILOR
EST. 1907
813 S. W. WASH., NR. 9TH

HERCULES POWDER COMPANY, Inc.

Paper Makers Chemical Division

P. O. Box 3939

BRoadway 3535

Portland, Ore.

Dorsey Motor & Brake Co.

Brake Relining and Adjusting
MOTOR REPAIRS

Body and Fender Rebuilding
Car Painting

Lubrication and Radio Sales and Service
601 S. E. Clay Phone East 5767

GENERAL INSURANCE

Fire-Casualty-Surety Bonds

HARVEY WELLS

Insurance Agency

412 Failing Building, Portland, Ore. AT. 7305

Insure In Sure Insurance

**Window Shades
and
Venetian Blinds**
Made to Order

Cleaning and Repairing

**ACME
WINDOW SHADE CO.**
211 STOCK EXCHANGE BUILDING
BEACON 4983
PORTLAND, OREGON

VENETIAN BLINDS

NEW WINDOW SHADES, REPAIRING,
CLEANING, RELIABLE GUARANTEED WORK

SE. 1032 ALFRED C. JENSEN, PROP.

Moreland Shade & Venetian Blind Shop
6656 S. E. MILWAUKIE

Daves Stadium Service

Oil and Gas

A COMPLETE SERVICE - COURTEOUS, PROMPT

ATWATER 8091

946 S. W. 18TH AVE. PORTLAND

**LOOK TO
"EASTERN"**

FOR APPAREL FOR THE ENTIRE FAMILY
including - -

Mens Famous "Bradbury" Suits
Topcoats, Trousers "Nunn—
"Bush" and "Packard" Shoes,
Nationally known Furnishings
"Mallory" and "Lee" Hats

Womens Suits, Coats, Dresses,
Millinery, Shoes, Furnishings

Boys and Girls Clothing, Shoes
Furnishings and Hats

We call particular attention to our
fine assortments of

Blankets, Comforters, Sheets,
Spreads and Linens

BUY ON OUR LIBERAL CREDIT PLAN
NO INTEREST OR CARRYING CHARGES

AS LONG AS SEVEN MONTHS TO PAY

EASTERN OUTFITTING CO.

10th at Washington Street

MORELAND FUNERAL HOME

Raymond C. Callings

Horace C. McGinnis

FUNERAL DIRECTORS

6637 S. E. Milwaukie Ave., Phone SE. 0071

"A Service of Sincerity"

Registered Nurse in attendance

Portland's Largest Hardware and Sporting
Goods Store

The Home of Quality Merchandise

**Honeyman
Hardware Co.**

Since 1865

Park and Glisan Streets